

McCall's

M8553



Designed and printed in USA

Average

MISSES' DRESS WITH SLEEVE AND LENGTH VARIATIONS

Suggested Fabrics: Cotton Blends, Denim, Linen, Twill. **Interfacing:** Lightweight Fusible.

Notions: A,B,C: One 16" (41cm) exposed metal zipper (cut to fit). **Also for C:** Two 3/8" (1.5cm) buttons.

Sizes	6	8	10	12	14	16	18	20	22	24
European	32	34	36	38	40	42	44	46	48	50

BODY MEASUREMENTS: Select pattern size based on body measurements

Bust	30½	31½	32½	34	36	38	40	42	44	46	Ins.
Waist	23	24	25	26½	28	30	32	34	37	39	"
Hip-9" below waist	32½	33½	34 6	38	40	42	44	46	48	"	
Back-neck to waist	15½	15¾	16	16¼	16½	16¾	17	17¼	17½	17¾	"

Dress A	45**	3½	3¼	3¼	3¼	3¼	3½	3½	3¾	3¾	Yds.
60**	2½	2½	2½	2½	2½	2½	2½	2½	2½	2½	"

Interfacing A,B	20"	¾	¾	¾	1	1	1	1	1½	1½	Yds.
Dress B	45**	4½	4½	4¾	4¾	4¾	5	5	5½	5½	Yds.
60**	3½	3½	3½	3½	3½	3½	3¾	3¾	3¾	3¾	"

Dress C	45**	4½	4¾	4¾	5	5	5	5½	5½	5½	Yds.
60**	3½	3½	3½	3½	3½	3½	3¾	3¾	3¾	3¾	"

Interfacing	20**	¾	¾	¾	¾	¾	1	1	1	1	"
-------------	------	---	---	---	---	---	---	---	---	---	---

FINISHED GARMENT MEASUREMENTS (Includes Design and Wearing Ease)

A,B,C Bust	36	37	38	39½	41½	43½	45½	47½	49½	51½	Ins.
Width, lower edge											

Dress A	76½	77½	78½	80	82	84	86	88	90	92	Ins.
Dress B,C	90¾	91¾	92¾	94¼	96¼	98¼	100¼	102¼	104¼	106¼	"

Finished back length from base of neck

Dress A	36½	36¾	37	37¼	37½	37¾	38	38¼	38½	38¾	Ins.
Dress B,C	51½	51¾	52	52¼	52½	52¾	53	53¼	53½	53¾	"

*with nap **without nap

Moins Facile

ROBE AVEC VARIATIONS DE MANCHES ET LONGUEURS POUR JEUNES FEMMES

Tissus Conseillés: Cotonnades, Denim, Toile de lin, Twill. **Entoilage:** Thermocollant léger.

Mercurie: A,B,C: 1 fermeture à glissière en métal exposée de 41cm (coupée pour ajuster). **Aussi pour C:** 2 boutons de 1.5cm.

Tailles	6	8	10	12	14	16	18	20	22	24
Françaises	34	36	38	40	42	44	46	48	50	52
Européen	32	34	36	38	40	42	44	46	48	50

MESURES DU CORPS: Choisissez la taille du patron basée sur les mesures du corps

Poitrine	78	80	83	87	92	97	102	107	112	117	cm
Taille	58	61	64	67	71	76	81	87	94	99	"

Handches (23cm au-dessous de la taille)

	83	85	88	92	97	102	107	112	117	122	cm
Dos du cou à la taille	39.5	40	40.5	41.5	42	42.5	43	44	44.5	45	"

Robe A	115cm*	2.9	3.0	3.0	3.0	3.1	3.1	3.4	3.4	3.5	m
150cm*	2.1	2.2	2.2	2.2	2.2	2.2	2.2	2.4	2.4	2.4	"

Entoilage A,B	51cm	0.8	0.8	0.8	0.9	0.9	0.9	0.9	0.9	1.0	m
Robe B	115cm*	4.1	4.2	4.3	4.5	4.5	4.6	4.6	4.7	4.7	m
150cm*	2.9	2.9	2.9	2.9	2.9	3.0	3.0	3.3	3.3	3.3	"

Robe C	115cm*	4.2	4.5	4.5	4.5	4.6	4.6	4.8	4.9	4.9	m
150cm*	3.2	3.2	3.2	3.3	3.3	3.3	3.3	3.3	3.4	3.4	"

Entoilage	51cm	0.8	0.8	0.8	0.8	0.8	0.8	0.8	0.9	0.9	"
-----------	------	-----	-----	-----	-----	-----	-----	-----	-----	-----	---

MESURES DES VÊTEMENTS FINI (Motif et aisance de port compris)

A,B,C Poitrine	91	94	97	100	105	110	116	121	126	131	cm
Largeur à l'ourlet											

Robe A	194	197	199	203	208	213	218	224	229	234	cm
Robe B,C	231	233	236	239	244	250	255	260	265	270	"

Longueur finie – dos, votre nuque à l'ourlet

Robe A	93	93	94	95	95	96	97	97	98	98	cm
Robe B,C	131	131	132	133	133	134	135	135	136	137	"

*avec sens **sans sens



A



B



C

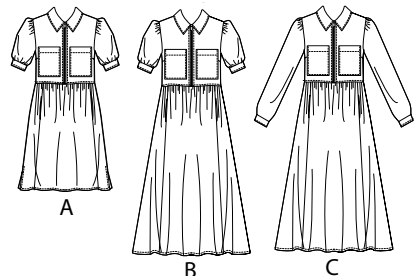
M8553

Page 1 of 4

McCall's®

English

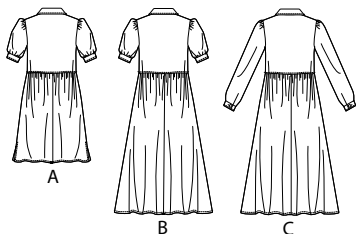
1-800-782-0323



A

B

C

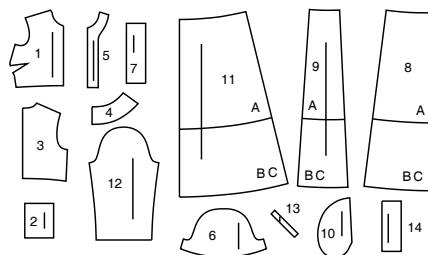


A

B

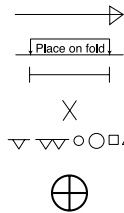
C

14 PATTERN PIECES



- 1 Bodice Front-A,B,C
- 2 Upper Pocket-A,B,C
- 3 Bodice Back-A,B,C
- 4 Collar-A,B,C
- 5 Front Facing-A,B,C
- 6 Sleeve-A,B
- 7 Sleeve Band-A,B
- 8 Skirt Front-A,B,C
- 9 Skirt Side Front-A,B,C
- 10 Lower Pocket-A,B,C
- 11 Skirt Back-A,B,C
- 12 Sleeve-C
- 13 Continuous Lap-C
- 14 Cuff-C

PATTERN MARKINGS



GRAINLINE: Place on straight grain of fabric, parallel to selvage or fold.

FOLDLINE: Place line on fold of fabric.

BUTTONHOLE MARKING: Indicates exact length and placement of buttonholes.

BUTTON MARKING: Indicates button placement.

NOTCHES AND SYMBOLS: For matching seams and construction details.

Indicates the Bustline, Waistline, Hip and/or Biceps. Measurements refer to circumference of Finished Garment (Body Measurement + Wearing Ease + Design Ease). Adjust pattern if necessary. The measurement excludes pleats, tucks, darts and seam allowances.

SEAM ALLOWANCE: 5/8" (1.5cm) included unless otherwise indicated, but not printed on tissue.

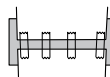
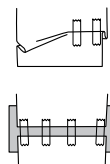
ADJUST IF NECESSARY

Lengthen or Shorten at adjustment lines (==) or where indicated on pattern. If substantial length is added, you may need to purchase additional fabric.

TO SHORTEN: Crease along adjustment line. Make a fold half the amount needed. Tape in place.

TO LENGTHEN: Slash between adjustment lines. Spread amount as needed, keeping edges parallel. Tape over paper.

When Alteration lines are not on tissue, lengthen or shorten at lower edge.



CUTTING LAYOUTS

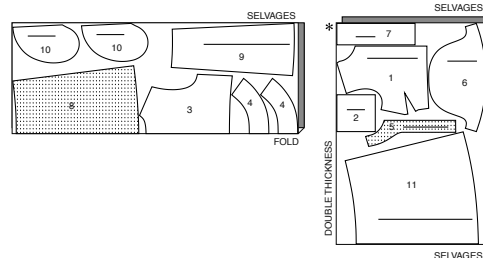
DRESS A

USE PIECES 1 2 3 4 5 6 7 8 9 10 11

45" (115CM)

WITH NAP

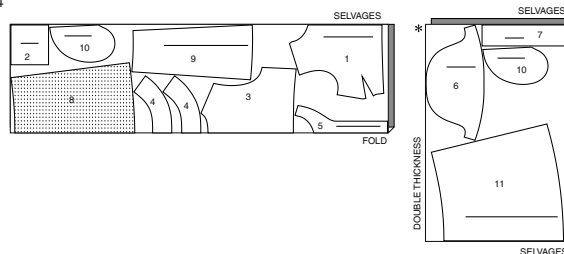
SIZES 6-8-10-12-14-16-18



45" (115CM)

WITH NAP

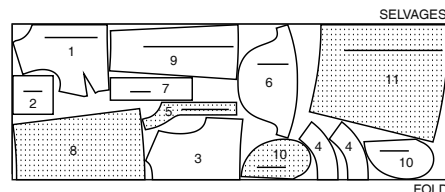
SIZES 20-22-24



60" (150CM)

WITH NAP

SIZES 6-8-10-12-14-16-18



CUTTING AND MARKING

SHRINK FABRIC if not labeled pre-shrunk. Press.

CIRCLE LAYOUT for View, Size, Fabric Width.

Use **WITH NAP** layout for fabrics with one-way designs, nap, pile or surface shading. Because most knits have surface shading, a with nap layout is used.

For **DOUBLE THICKNESS (WITH FOLD)** - fold fabric with right sides together.

*** DOUBLE THICKNESS (WITHOUT FOLD)** - For fabrics with nap, fold fabric crosswise, right sides together. Mark as shown. Cut along crosswise fold of fabric (A). Turn upper layer 180° so arrows go in same direction and place over lower layer, right sides together (B).

For **SINGLE THICKNESS** - place fabric right side up. (For Fur Pile fabrics, place pile side down.)

★ Cut other pieces first, allowing enough fabric to cut this piece. Open fabric. For "Cut 1" pieces, cut piece once on single layer of fabric with piece face up on right side of fabric.

Pattern may have cutting lines for several sizes. Select the proper cutting line or pattern pieces for your size.

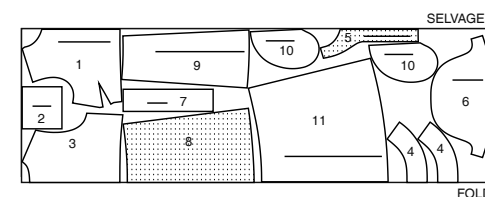
Before **CUTTING** place all pieces on fabric according to layout. Pin. (Layouts show approximate position of pattern pieces; position may vary according to your pattern size.) Cut **ACCURATELY**, cutting notches outward.

Before removing pattern, **TRANSFER MARKINGS** and lines of construction to Wrong Side of fabric, using the Pin and Chalk Pencil method or Tracing Paper and Dressmaker Wheel. Markings needed on right side of fabric should be thread traced.

NOTE: Broken-line boxes (a! b! c!) in layouts represent pieces cut by measurements provided.

RIGHT SIDE OF PATTERN	WRONG SIDE OF PATTERN	RIGHT SIDE OF FABRIC	WRONG SIDE OF FABRIC
-----------------------	-----------------------	----------------------	----------------------

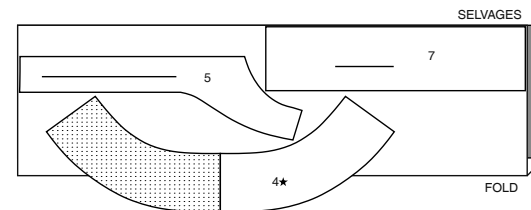
60" (150CM)
WITH NAP
SIZES 20-22-24



INTERFACING A,B

USE PIECES 4 5 7

20" (51CM)
WITHOUT NAP
ALL SIZES



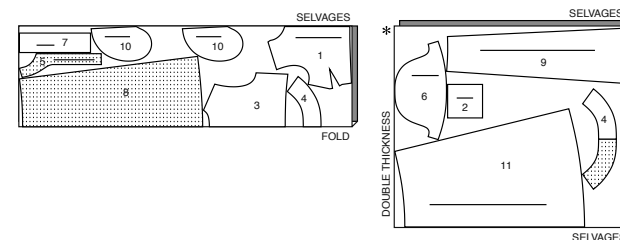
DRESS B

USE PIECES 1 2 3 4 5 6 7 8 9 10 11

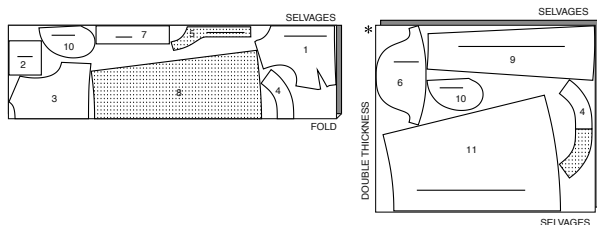
45" (115CM)

WITH NAP

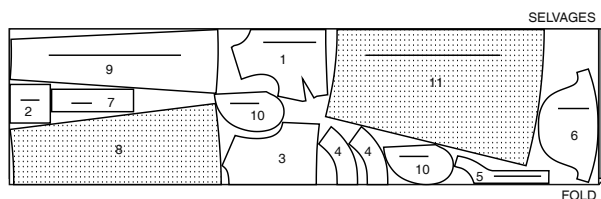
SIZES 6-8-10-12-14-16-18



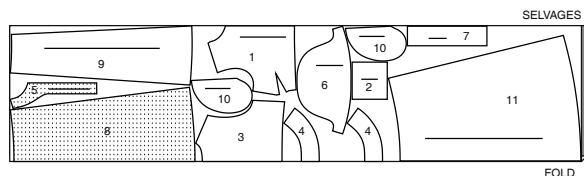
45" (115CM)
WITH NAP
SIZES 20-22-24



60" (150CM)
WITH NAP
SIZES 6-8-10-12-14-16-18

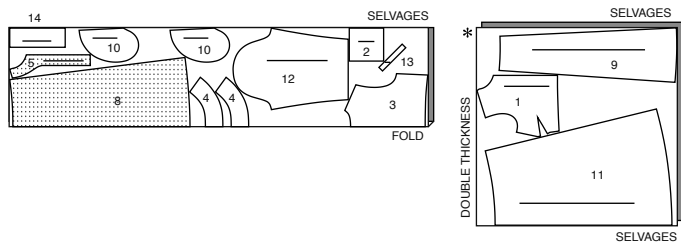


60" (150CM)
WITH NAP
SIZES 20-22-24

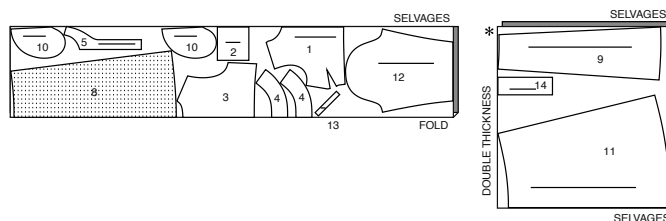
**DRESS C**

USE PIECES 1 2 3 4 5 8 9 10 11 12 13 14

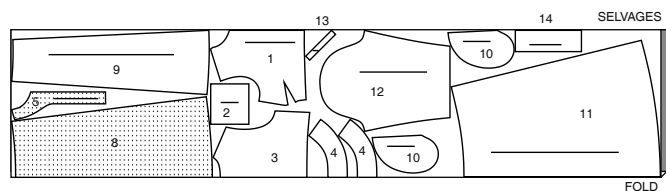
45" (115CM)
WITH NAP
SIZES 6-8-10-12-14-16-18



45" (115CM)
WITH NAP
SIZES 20-22-24

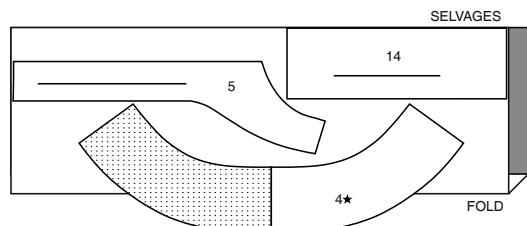
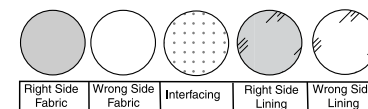


60" (150CM)
WITH NAP
ALL SIZES

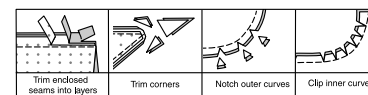
**INTERFACING C**

USE PIECES 4 5 14

20" (51CM)
WITHOUT NAP
ALL SIZES

**SEWING INFORMATION****FABRIC KEY****SEAM ALLOWANCES**

Use 5/8" (1.5cm) seam allowances unless otherwise indicated.

**PIN AND FIT**

Pin or baste seams, **RIGHT SIDE TOGETHER**, matching notches.
Fit garment before stitching major seams.

PRESS

Press seam allowances flat; then open unless otherwise stated. Clip where necessary so they lie flat.

GLOSSARY

Sewing methods in **BOLD TYPE** have Sewing Tutorial Video available. Scan QR CODE to watch videos:

CONTINUOUS LAP – See **Armholes/Sleeves**: "how to sew a sewing a continuous lap" video.

GATHER – See **Gathering**: "sewing two row gathers" video.

EDGE STITCH – See **Machine Stitches**: "how to sew an edgestitch" video.

NARROW HEM – See **Hems**: "sewing narrow hems" video.

SET IN SLEEVE – See **Armholes/Sleeves**: "sewing a set in sleeve" video.

STAYSTITCH – See **Machine Stitches**: "how to do stay stitching" video.

TOPSTITCH – See **Machine Stitches**: "how to topstitch" video.

TRIM SEAM – See **Seams**: "how to trim, clip and layer seams" video.

SEWING TUTORIALS

Build your skills viewing short, easy-to-follow videos at
[simplicity.com/sewingtutorials](https://www.simplicity.com/sewingtutorials)

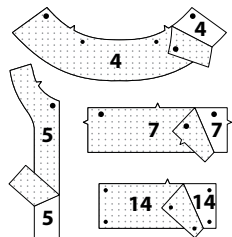
PATTERN PIECES WILL BE IDENTIFIED BY NUMBERS THE FIRST TIME THEY ARE USED.

STITCH 5/8" (1.5CM) SEAMS WITH RIGHT SIDES TOGETHER UNLESS OTHERWISE STATED.

DRESS A, B, C

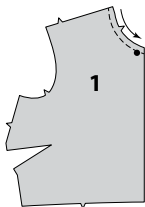
INTERFACING

1. Pin interfacing to WRONG side of COLLAR (4), FRONT FACING (5), and for View A, B SLEEVE BAND (7), or for View C CUFF (14). Fuse in place following manufacturer's directions.

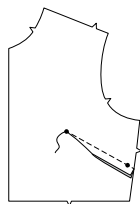


BODICE

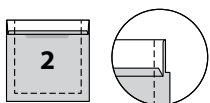
2. To STAYSTITCH neck edge of BODICE FRONT (1), stitch 1/2" (1.3cm) from cut edge in direction of arrows. This stitching stays in permanently to prevent stretching on curved edges. (Shown only in the first illustration.)



3. To stitch dart seam on bodice front, with RIGHT sides together, bring broken lines together carefully matching small dots. On INSIDE, place pins at RIGHT angles to the broken lines. Stitch the dart seam from outer edge to the point. Press the dart seam flat along the stitching to "blend" the stitches, then press dart down.



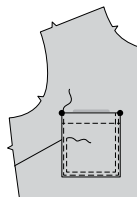
4. Press under 1/4" (6mm) on upper edge of UPPER POCKET (2). Turn upper edge to OUTSIDE along fold line, forming facing. Stitch along seam line on raw edges. Trim seam allowance in the facing area to 1/4" (6mm).



5. Turn corners RIGHT side out, turning facing to the WRONG side; press, pressing under raw edges along stitching. Stitch facing close to inner edge.



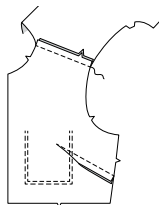
6. On OUTSIDE, pin pocket to front, matching large dots. EDGESTITCH close to side and lower edges and TOPSTITCH 1/4" (6mm) away from first stitching.



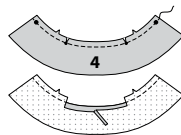
7. To STAYSTITCH neck edge of BODICE BACK (3), stitch 1/2" (1.3cm) from cut edge in direction of arrows. This stitching stays in permanently to prevent stretching on curved edges. (Shown only in the first illustration.)



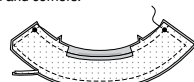
8. Stitch front to back at shoulder edges.



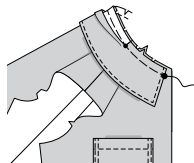
9. Machine-stitch 5/8" (1.5cm) from notched edge of interfaced COLLAR (4). Clip notched edge of collar to stitching at small dots. Press under 5/8" (1.5cm) on raw edge between clips. Trim to 1/4" (6mm).



10. With RIGHT sides together, stitch facing to collar, leaving notched edge open. TRIM seam and corners.

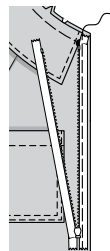


11. Turn collar; press. TOPSTITCH 1/4" (6mm) away from finished edge. Clip neck edge of bodice to staystitching. On OUTSIDE, pin collar (facing side) to neck edge, matching centers, large dots, and notches, placing inner small dot at shoulder seam. Baste both collar and facing sections to front neck edge as far as the small dot. Baste only the collar facing section to remaining neck edge between small dots.

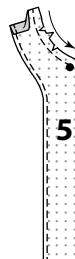


NOTE: You may need to adjust the length of your Metal Zipper. Always shorten metal zippers from the top. Measure RIGHT front opening edge from 7/8" (2.2cm) above lower raw edge to 7/8" (2.2cm) below upper edge. Mark the desired length on the zipper tape, measuring from the lower edge of the bottom stop. Cut off extra zipper 7/8" (2.2cm) above mark, making sure that the zipper pull is well below where you are going to cut. Do not discard the pieces. Using pliers, remove the teeth above your shortening mark, pry the top-stops open, and remove them from the discarded pieces of zipper. Reinstall top stops by crimping them in place immediately above the last remaining tooth.

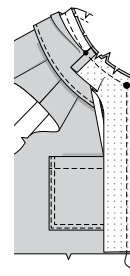
12. Pin closed zipper face down on RIGHT bodice front with center of zipper a generous 1/8" (6mm) from seamline, placing top stop 1/8" (6mm) below large dot, as shown. Baste close to seamline within the seam allowance, using an adjustable zipper foot.



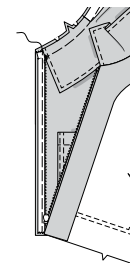
13. Machine-stitch 1/2" (1.3cm) from neck edge of FRONT FACING (5) in direction of arrows. To finish long unnotched edge, stitch 1/4" (6mm) from edge, turn under along stitching and stitch; OR finish edge with a zigzag or overlock stitch. Clip neck edge of facing to stitching. Press under 5/8" (1.5cm) on shoulder edge.



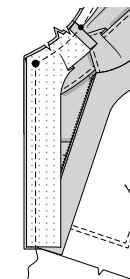
14. With RIGHT sides together, pin facing to front and neck edge (over zipper). Baste close to seamline within the seam allowance, using an adjustable zipper foot. Stitch front and neck edge along the seamline, being careful not to catch in free edge of collar. TRIM SEAM.



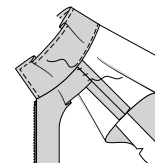
15. Turn facing to INSIDE; press. Pressing out the zipper. On OUTSIDE of LEFT bodice front, pin closed zipper face down with center of zipper a generous 1/8" (6mm) from seamline, placing top stop 1/8" (6mm) below large dot, as shown. Baste close to seamline within the seam allowance, using an adjustable zipper foot.



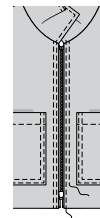
16. With RIGHT sides together and raw edges even, pin remaining front facing to LEFT front and neck edge (over zipper). Baste close to seamline within the seam allowance, using an adjustable zipper foot. Stitch front and neck edge along the seamline, being careful not to catch in free edge of collar. TRIM SEAM.



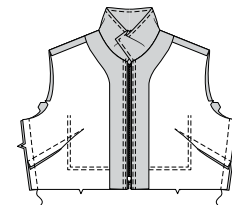
17. Turn facing to INSIDE, turning back neck seam toward collar; press. Stitch pressed edge of collar over neck seam. To keep the facing in place, tack facing to shoulder seam allowances by hand or with a small piece of fusible web.



18. On OUTSIDE, EDGESTITCH bodice close to front edges, and TOPSTITCH 1/4" (6mm) away from first stitching.

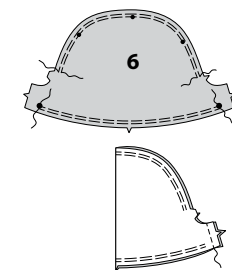


19. Stitch front to back at side edges.

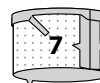


SLEEVE A, B

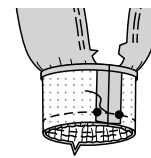
20. To GATHER top of SLEEVE (6) between notches and lower edge of sleeve between the large dots, stitch along seam line and 1/4" (6mm) INSIDE seam line, using a long machine-stitch. Stitch underarm seam.



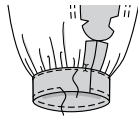
21. Stitch notched ends of SLEEVE BAND (7) together. Press under 5/8" (1.5cm) on unnotched edge; trim to 1/4" (6mm).



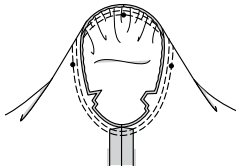
22. With RIGHT sides together, pin sleeve band to lower edge of sleeve, matching seams and large dots. Pull up gathering stitches to fit. Baste. Stitch seam. TRIM SEAM. Press seam toward band.



23. On **INSIDE**, pin pressed edge of band over seam, placing pins on **OUTSIDE**. On **OUTSIDE**, stitch band close to seam, catching in pressed edge of band on **INSIDE**. Press. **TOPSTITCH** 1/4" (6mm) from lower pressed edge.

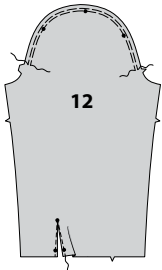


24. To **SET IN SLEEVE**, turn sleeve **RIGHT** side out. Hold bodice **WRONG** side out with armhole toward you. With **RIGHT** sides together, pin sleeve to armhole edge with center small dot at shoulder seam, matching underarm seams, notches and remaining small dots. Pull up gathering stitches to fit. To distribute fullness evenly, slide fabric along bobbin threads until gathers are distributed evenly. Baste. Stitch. Stitch again 1/8" (3mm) from first stitching. Trim seam below notches close to stitching. Press only the seam allowance, shrinking out fullness.

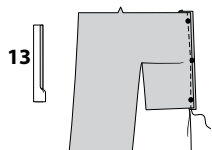


SLEEVE C

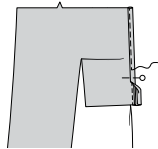
25. To **GATHER** top of **SLEEVE** (12) between notches, stitch along seam line and 1/4" (6mm) **INSIDE** seam line, using a long machine-stitch. To make slash opening at lower edge of sleeve, stitch along stitching lines. Pivot and take one small stitch across the point. Slash between stitching, being careful not to slash through the stitch at the point.



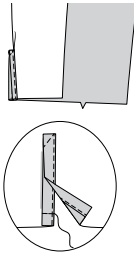
26. Press under 1/4" (6mm) on unmarked edge of **CONTINUOUS LAP** (13). Spread slashed edges of sleeve apart so that they form a straight line. Pin **RIGHT** side of continuous lap to **WRONG** side of slashed edges, matching stitching lines and small dots. Sleeve seam allowance will be 1/4" (6mm) at the ends and taper close to nothing at the center dot. Stitch along stitching line, being careful not to pucker sleeve at center dot. Press seam toward lap.



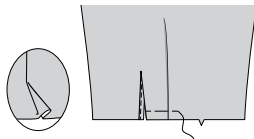
27. Pin pressed edge of lap to **OUTSIDE** slightly over stitching. Stitch close to pressed edge.



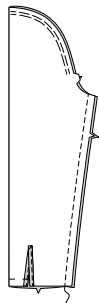
28. Turn front edge of lap to **INSIDE**; baste in place across lower edge. To keep lap in place, stitch diagonally across upper edge of lap as shown.



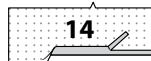
29. To make a soft pleat, on **OUTSIDE**, fold along solid lines. Bring fold to broken line; pin. Baste across raw edge.



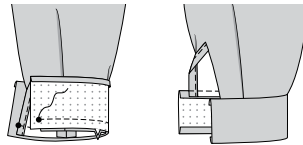
30. Stitch underarm edges of sleeve together.



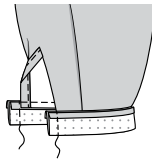
31. Press under 5/8" (1.5cm) on unnotched edge of **CUFF** (14); trim to 1/4" (6mm).



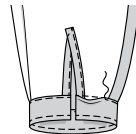
32. With **RIGHT** sides together, pin sleeve to cuff, placing opening edges at small dots. Stitch. **TRIM SEAM**. Press seam toward cuff, pressing cuff out.



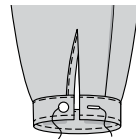
33. Fold cuff along foldline with **RIGHT** sides together. Stitch ends. **TRIM SEAM**.



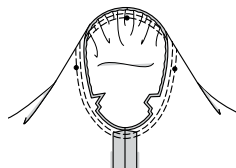
34. Turn cuff; press. On **INSIDE**, pin pressed edge of cuff over seam. **EDGE STITCH** in place. Press. **TOPSTITCH** 1/4" (6mm) from lower pressed edge.



35. Make buttonhole on cuff at marking. Sew button to cuff at small dot.

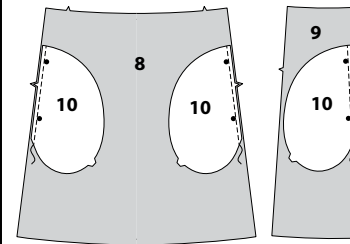


36. To **SET IN SLEEVE**, turn sleeve **RIGHT** side out. Hold bodice **WRONG** side out with armhole toward you. With **RIGHT** sides together, pin sleeve to armhole edge with center small dot at shoulder seam, matching underarm seams, notches and remaining small dots. Pull up gathering stitches to fit. To distribute fullness evenly, slide fabric along bobbin threads until gathers are distributed evenly. Baste. Stitch. Stitch again 1/8" (3mm) from first stitching. Trim seam below notches close to stitching. Press only the seam allowance, shrinking out fullness.

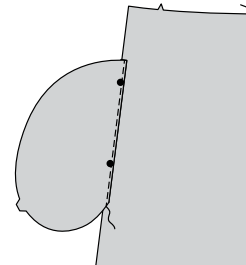


SKIRT

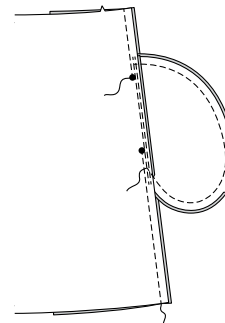
37. With **RIGHT** sides together, pin **LOWER POCKET** (10) to **SKIRT FRONT** (8), matching large dots, having raw edges even. Stitch in a 3/8" (1cm) seam. Apply lower pocket to **SKIRT SIDE FRONT** (9) in the same manner.



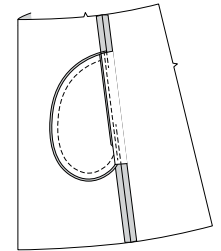
38. **UNDERSTITCH** the front pocket. Press seam toward pocket, pressing pocket out.



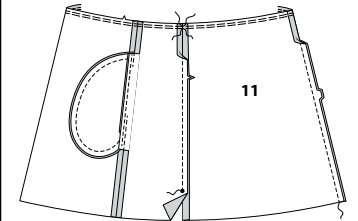
39. Pin skirt front to skirt side front at side front seams, matching large dots. In one continuous stitching, stitch side seams and pockets, squaring stitching at large dots.



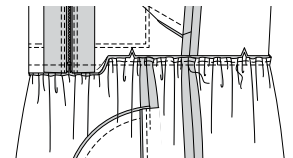
40. Clip skirt side front seam allowance at ends of pocket. Press seam open above and below clips. Press pocket toward front.



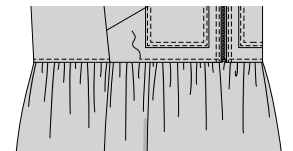
41. Stitch center back edges of **SKIRT BACK** (11) sections together. Stitch front to back at side edges, (stitching from upper edge to large dot, and back-stitching at dot to reinforce for View A). To **GATHER** upper edge of skirt, stitch along seam line and 1/4" (6mm) **INSIDE** seam line, using a long machine-stitch, breaking stitching at seams.



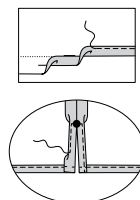
42. With **RIGHT** sides together and raw edges even, pin lower edge of bodice to upper edge of skirt, matching centers, seams, and notches, pulling up gathering stitches to fit. Baste. Stitch. Press seam toward bodice.



43. On **OUTSIDE**, **TOPSTITCH** bodice 1/4" (6mm) from seam.



44. Press under 5/8" (1.5cm) hem allowance on skirt. To form a **NARROW HEM**, tuck under raw edge to meet crease. Press. Stitch hem in place. For **View A-NARROW HEM** slit edges in the same manner, squaring stitching at opening end.





Congrats!

You've completed your sewing adventure

SHARE YOUR LOOK



Post your pattern and tag us
[@simplicity_creative_group](#) and [#simplicitypatterns](#)
for a chance to be featured on our social media.

Look for more PDF patterns at [simplicity.com](https://www.simplicity.com)

Have a question or need help with your sewing project call us at
1-800-782-0323

McCall's
by **design**_{group}

McCall's ©2024 a division of IG Design Group Americas Inc. • Atlanta, GA 30342 USA www.thedesigngroup.com • All Rights Reserved. www.mccall.com • Made in the U.S.A. Fabriqué aux États-Unis.

To be used for individual private home use only and not for commercial or manufacturing purposes. • A usage privé seulement et non à des fins commerciales ou de production en série. • Para uso privado solamente, no se puede utilizar con propósitos de comercialización o de producción en serie.