

McCall's

M8552



Designed and
printed in USA

Average													
MISSES' DRESS WITH SLEEVE VARIATIONS													
Suggested Fabrics: Boucle, Crepe, Linen Blends, Medium weight Denim, Tweed. Lining: Lining Fabric. Interfacing: Lightweight Fusible.													
Notions: A,B,C: One 22" (56cm) invisible zipper, two hooks and eyes, ¾" (2cm) buttons: Three for A, Five for B,C.													
Sizes	8	10	12	14	16	18	20	22	24	26			
European	34	36	38	40	42	44	46	48	50	52			
BODY MEASUREMENTS: Select pattern size based on body measurements													
Bust	31½	32½	34	36	38	40	42	44	46	48	Ins.		
Waist	24	25	26½	28	30	32	34	37	39	41	"		
Hip-9" below waist	33½	34½	36	38	40	42	44	46	48	50	"		
Back-neck to waist	15¾	16	16¼	16½	16¾	17	17¼	17½	17¾	18	"		
Dress A	45**	2	2	2½	2¼	2¼	2¼	2½	2½	2½	Yds.		
	60**	1½	1½	1½	1½	1¾	1¾	1¾	1¾	2	"		
Lining	45***	1¾	1¾	2	2½	2¼	2¼	2¼	2½	2½	"		
Interfacing -	20" - ¾ yd.												
Dress B	45**	2½	2½	2½	2½	3	3	3	3½	3½	Yds.		
	60**	1¾	1¾	1¾	1¾	1¾	2½	2½	2½	2½	"		
Lining B,C	45***	1¾	2½	2¼	2½	2½	2½	2½	2½	2½	Yds.		
Interfacing B,C	20"	1	1	1	1	1	1	1½	1½	1½	"		
Dress C	45**	2½	2¼	2½	2½	2¾	2¾	2¾	2¾	3	Yds.		
	60**	1¾	1¾	1¾	1¾	1¾	1¾	1¾	2½	2½	"		
Contrast (Collar, Cuff)	45, 60**	¾	¾	¾	¾	¾	¾	¾	¾	¾	Yd.		
FINISHED GARMENT MEASUREMENTS (Includes Design and Wearing Ease)													
A,B,C Bust	35	36	37½	39½	41½	43½	45½	47½	49½	51½	Ins.		
A,B,C Waist	29	30	31½	33½	35½	37½	39½	41½	43½	45½	"		
A,B,C Hip	39	40	41½	43½	45½	47½	49½	51½	53½	55½	"		
Width, lower edge													
Dress A,B,C	41	42	43½	45½	47½	49½	51½	53½	55½	57½	Ins.		
Finished back length from base of neck													
Dress A,B,C	31¾	32	32¼	32½	32¾	33	33¼	33½	33¾	34	Ins.		
*with nap **without nap													

Moins Facile

ROBE AVEC VARIATIONS DE MANCHE POUR JEUNES FEMMES

Tissus Conseillés: Bouclé, Crêpe, Lin mélangés, Denim de poids moyen, Tweed. **Doublure:** Tissu à doublure.
Entoilage: Thermocollant léger.

Mercurie: A,B,C: 1 fermeture à glissière invisible de 56cm, 2 agrafes, boutons de 2cm: 3 pour A, 5 pour B,C.
2 agrafes.

Tailles	8	10	12	14	16	18	20	22	24	26	
Françaises	36	38	40	42	44	46	48	50	52	54	
Européen	34	36	38	40	42	44	46	48	50	52	

MESURES DU CORPS: Choisissez la taille du patron basée sur les mesures du corps

Poitrine	80	83	87	92	97	102	107	112	117	122	cm
Taille	61	64	67	71	76	81	87	94	99	104	"

Hanches (23cm au-dessous de la taille)

	85	88	92	97	102	107	112	117	122	127	cm
Dos du cou à la taille	40	40.5	41.5	42	42.5	43	44	44.5	45	46	"

Robe A	115cm*	1.8	1.8	1.9	1.9	2.1	2.1	2.1	2.3	2.4	2.4	m
	150cm*	1.4	1.4	1.4	1.4	1.6	1.6	1.6	1.7	1.7	1.8	"
Doublure	115cm**	1.6	1.7	1.8	1.9	2.1	2.1	2.1	2.1	2.2	2.2	"
Entoilage -	51cm - 0.8m											

Robe B	115cm*	2.2	2.2	2.2	2.3	2.3	2.7	2.7	2.7	2.9	2.9	m
	150cm*	1.7	1.7	1.7	1.7	1.7	1.9	1.9	1.9	2.1	2.2	"
Doublure B,C	115cm**	1.7	1.9	2.1	2.2	2.3	2.4	2.4	2.4	2.4	2.4	m
Entoilage B,C	51cm	0.9	0.9	0.9	0.9	0.9	0.9	1.0	1.0	1.0	1.0	"
Robe C	115cm*	1.9	1.9	2.3	2.3	2.5	2.6	2.6	2.6	2.6	2.6	m
	150cm*	1.6	1.6	1.6	1.6	1.7	1.7	1.7	1.7	1.9	2.2	"

Contraste (Col, Poignet)

	115, 150cm*	0.3	0.3	0.6	0.6	0.6	0.6	0.6	0.6	0.6	0.6	m
--	-------------	-----	-----	-----	-----	-----	-----	-----	-----	-----	-----	---

MESURES DES VÊTEMENTS FINI (Motif et aisance de port compris)

A,B,C Poitrine	86	91	95	100	105	110	116	121	126	131	cm
A,B,C Taille	74	76	80	85	90	95	100	105	110	116	"
A,B,C Hanches	99	102	105	110	116	121	126	131	136	141	"
Largeur à l'ourlet											
Robe A,B,C	104	107	110	116	121	126	131	136	141	146	cm
Longueur finie – dos, votre nuque à l'ourlet											
Robe A,B,C	81	81	82	83	83	84	84	85	86	86	cm

*avec sens **sans sens



A



B



C

M8552

Page 1 of 4

McCall's®

English

1-800-782-0323



A

B

C

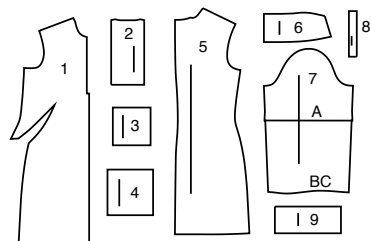


A

B

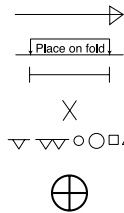
C

9 PATTERN PIECES



- 1 Front-A,B,C
- 2 Placket-A,B,C
- 3 Upper Pocket-A,B,C
- 4 Lower Pocket-A,B,C
- 5 Back-A,B,C
- 6 Collar-A,B,C
- 7 Sleeve-A,B,C
- 8 Continuous Lap-B,C
- 9 Cuff-B,C

PATTERN MARKINGS



GRAINLINE: Place on straight grain of fabric, parallel to selvage or fold.

FOLDLINE: Place line on fold of fabric.

BUTTONHOLE MARKING: Indicates exact length and placement of buttonholes.

BUTTON MARKING: Indicates button placement.

NOTCHES AND SYMBOLS: For matching seams and construction details.

Indicates the Bustline, Waistline, Hip and/or Biceps. Measurements refer to circumference of Finished Garment (Body Measurement + Wearing Ease + Design Ease). Adjust pattern if necessary. The measurement excludes pleats, tucks, darts and seam allowances.

SEAM ALLOWANCE: 5/8" (1.5cm) included unless otherwise indicated, but not printed on tissue.

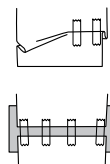
ADJUST IF NECESSARY

Lengthen or Shorten at adjustment lines (==) or where indicated on pattern. If substantial length is added, you may need to purchase additional fabric.

TO SHORTEN: Crease along adjustment line. Make a fold half the amount needed. Tape in place.

TO LENGTHEN: Slash between adjustment lines. Spread amount as needed, keeping edges parallel. Tape over paper.

When Alteration lines are not on tissue, lengthen or shorten at lower edge.



CUTTING AND MARKING

SHRINK FABRIC if not labeled pre-shrunk. Press.

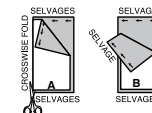
CIRCLE LAYOUT for View, Size, Fabric Width.

Use **WITH NAP** layout for fabrics with one-way designs, nap, pile or surface shading. Because most knits have surface shading, a with nap layout is used.

For **DOUBLE THICKNESS (WITH FOLD)** - fold fabric with right sides together.

*** DOUBLE THICKNESS (WITHOUT FOLD)** - For fabrics with nap, fold fabric crosswise, right sides together. Mark as shown. Cut along crosswise fold of fabric (A). Turn upper layer 180° so arrows go in same direction and place over lower layer, right sides together (B).

For **SINGLE THICKNESS** - place fabric right side up. (For Fur Pile fabrics, place pile side down.)



★ Cut other pieces first, allowing enough fabric to cut this piece. Open fabric. For "Cut 1" pieces, cut piece once on single layer of fabric with piece face up on right side of fabric.

Pattern may have cutting lines for several sizes. Select the proper cutting line or pattern pieces for your size.

Before **CUTTING** place all pieces on fabric according to layout. Pin. (**Layouts show approximate position of pattern pieces; position may vary according to your pattern size.**) Cut **ACCURATELY**, cutting notches outward.

Before removing pattern, **TRANSFER MARKINGS** and lines of construction to Wrong Side of fabric, using the Pin and Chalk Pencil method or Tracing Paper and Dressmaker Wheel. Markings needed on right side of fabric should be thread traced.

NOTE: Broken-line boxes (a! b! c!) in layouts represent pieces cut by measurements provided.

CUTTING LAYOUTS

RIGHT SIDE OF PATTERN	WRONG SIDE OF PATTERN	RIGHT SIDE OF FABRIC	WRONG SIDE OF FABRIC
-----------------------	-----------------------	----------------------	----------------------

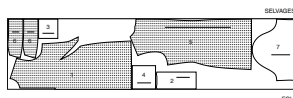
DRESS A

USE PIECES: 1 2 3 4 5 6 7

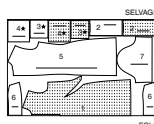
45" (115CM)
WITH NAP
SIZES 8 10 12
14 16 18 20



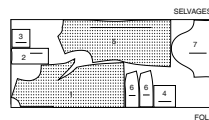
45" (115CM)
WITH NAP
SIZES 22 24 26



60" (150CM)
WITH NAP
SIZES 8 10 12 14



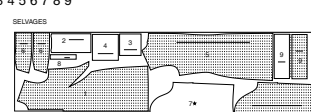
60" (150CM)
WITH NAP
SIZES 16 18 20 22 24 26



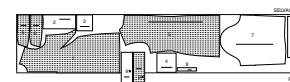
DRESS B

USE PIECES: 1 2 3 4 5 6 7 8 9

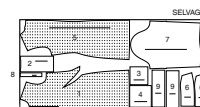
45" (115CM)
WITH NAP
SIZES 8 10 12
14 16



45" (115CM)
WITH NAP
SIZES 18 20 22 24 26



60" (150CM)
WITH NAP
SIZES 8 10 12 14 16



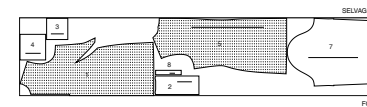
60" (150CM)
WITH NAP
SIZES 18 20 22 24 26



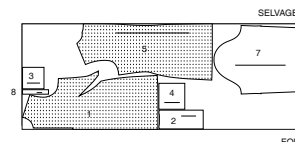
DRESS C

USE PIECES: 1 2 3 4 5 7 8

45" (115CM)
WITH NAP
ALL SIZES



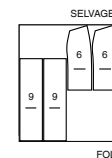
60" (150CM)
WITH NAP
ALL SIZES



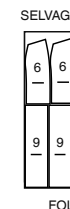
CONTRAST C (COLLAR, CUFFS)

USE PIECES: 6 9

45" (115CM)
WITH NAP
ALL SIZES



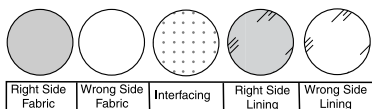
60" (150CM)
WITH NAP
ALL SIZES



© 2025 McCall's® an IG Design Group Americas, Inc. brand.
All Rights Reserved. Printed in U.S.A.

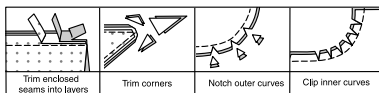
SEWING INFORMATION

FABRIC KEY



SEAM ALLOWANCES

Use 5/8" (1.5cm) seam allowances unless otherwise indicated.



PIN AND FIT

Pin or baste seams, RIGHT SIDE TOGETHER, matching notches. Fit garment before stitching major seams.

PRESS

Press seam allowances flat; then open unless otherwise stated. Clip where necessary so they lie flat.

GLOSSARY

Sewing methods in **BOLD TYPE** have Sewing Tutorial Video available. Scan **QR CODE** to watch videos:

CONTINUOUS LAP – see **Armholes/Sleeves**: “how to sew a sewing a continuous lap” video

DOUBLE POINTED DART – see **Darts**: “sewing double pointed dart” video

EASE/GATHER – see **Gathering**: “sewing two row gathers” video

EDGE STITCH – see **Machine Stitches**: “how to sew an edgestitch” video

FINISH – see **Seams**: “how to finish seam allowances” video

FLAT DART – see **Darts**: “sewing flat dart” video

INVISIBLE ZIPPER – see **Zippers**: “sewing an invisible zipper” video

REINFORCE – see **Machine Stitches**: “how to reinforce seams” video

SET IN SLEEVE – see **Armholes/Sleeves**: “sewing a set in sleeve” video

SLIPSTITCH – see **Hand Stitching**: “how to slip stitch” video

STAYSTITCH – see **Machine Stitches**: “how to do stay stitching” video

STITCH IN THE DITCH – see **Machine Stitches**: “how to stitch in the ditch” video

TACK – see **Hand Stitching**: “how to tack” video

TRIM SEAM – see **Seams**: “how to trim, clip and layer seams” video

UNDERSTITCH – see **Machine Stitches**: “how to understitch” video

SEWING TUTORIALS



Build your skills viewing short, easy-to-follow videos at simplicity.com/sewingtutorials

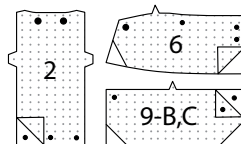
PATTERN PIECES WILL BE IDENTIFIED BY NUMBERS THE FIRST TIME THEY ARE USED.

STITCH 5/8" (1.5CM) SEAMS WITH RIGHT SIDES TOGETHER UNLESS OTHERWISE STATED.

DRESS A, B, C

INTERFACING

1. Pin INTERFACING to wrong side of each matching FABRIC section. Fuse, following manufacturer's instructions. Trim corners of interfacing, as shown.



FRONT AND BACK

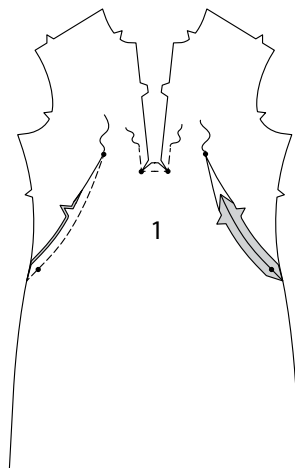
2. To stitch **DART SEAMS** in FRONT (1), with RIGHT sides together, bring broken lines together carefully matching small dots. On INSIDE, place pins at RIGHT angles to the broken lines. Stitch the dart seam from outer edge to the point.

TIP- To prevent a “bubble” at the point, make the last few stitches right on the fold and leave the thread ends long enough to tie a knot. DO NOT back-stitch at the point.

Press the dart seam flat along the stitching to “blend” the stitches, then press dart down.

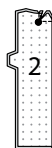
REINFORCE front along seamline by stitching along stitching lines, pivoting at small dots, as shown.

Clip diagonally to stitching at small dots, being careful not to clip through stitching.



3. With RIGHT sides together, fold PLACKET (2) sections in half along foldline.

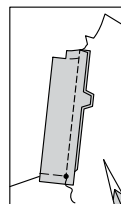
Stitch across top edge of placket, pivoting at large dot, continuing across seam allowance, as shown. Trim seam and corner, clip to large dot.



4. Turn placket RIGHT side out. Press. Baste raw edges together.

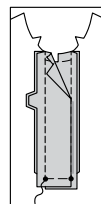


5. Working on RIGHT front and keeping the LEFT front out of the way, with RIGHT sides together, pin placket to front opening edge, matching notches and small dots, keeping lower clipped edge out of the way. Stitch placket above lower small dot; back-stitch at small dot to reinforce seam. Trim seam. Press seam toward dress, pressing placket out.



6. Apply remaining placket to LEFT front in same manner as RIGHT.

On INSIDE, lap LEFT front over RIGHT, matching centers and small dots. Baste between small dots.



7. Pin the lower edges of placket to clipped edge of front, matching centers and small dots.

Turn the front down so that the RIGHT sides are together and away from the lower edge of placket. Stitch across lower edge of placket and clipped edges between small dots; back-stitch at dots to reinforce seam.



8. Construct two sets of pockets as follows:

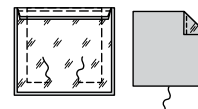
With RIGHT sides together, pin UPPER POCKET (3) OR LOWER POCKET (4) fabric and lining sections together, having raw edges even. Stitch upper edge.

UNDERSTITCH upper edge of pocket lining.

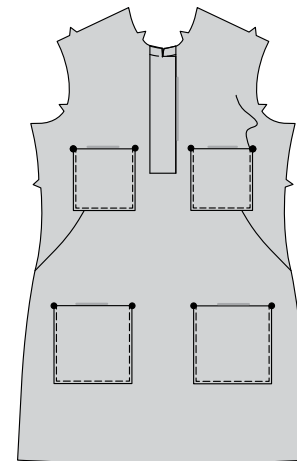


9. With RIGHT sides together, stitch outer edge of pocket, leaving an opening at lower edge, large enough for turning. **TRIM SEAM** and corners.

Turn pocket RIGHT side out through opening. Press, pressing under seam allowance on opening edges. **SLIPSTITCH** opening closed.

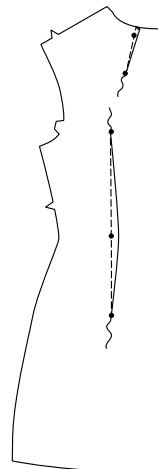


10. On OUTSIDE, pin pockets to front, matching large dots. **EDGE STITCH** pockets in place.



11. Stitch **DARTS** in BACK (5) at shoulder edges. Stitch **DOUBLE POINTED DARTS** at waistline.

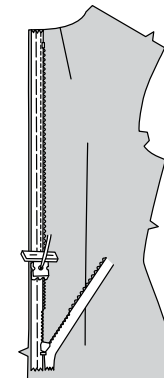
TIP: See **Darts**: “sewing flat dart” and “sewing double pointed dart” videos for more assistance.



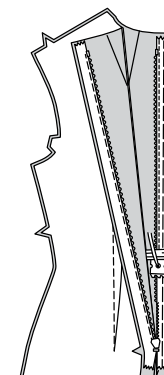
ZIPPER

NOTE: Stitch invisible zipper using an adjustable zipper foot. For more assistance inserting zipper, see **Zippers**: “sewing an invisible zipper” video.

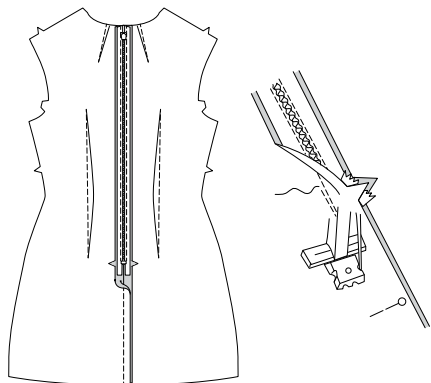
12. Open the zipper and press the tape using a cool iron. On OUTSIDE, pin RIGHT side of the zipper face down on the RIGHT side of the zipper opening. Have the coil along the seam line, the tape within the seam allowance and the top stop 3/4" (2cm) below upper edge, as shown. Hand-baste along center of the tape. Position zipper foot at the top of the zipper with RIGHT groove of the foot over coil. Stitch along tape to the notch. Back-stitch to reinforce.



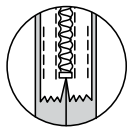
13. Pin the remaining half of the zipper to the LEFT side of the zipper opening in same manner. Make sure the upper and lower edges of the garment are even. Hand-baste along the center of the tape. Position zipper foot at the top of the zipper with LEFT groove over the coil. Stitch along tape to the notch. Back-stitch to reinforce.



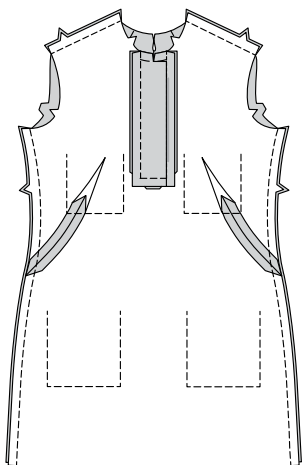
14. Close zipper and check that it is invisible from the OUTSIDE. Pull the free ends of the zipper tape away from the seam allowance. Pin remaining center back seam together below zipper. Position zipper foot all the way to the LEFT so the needle goes down through the outer notch of the foot. Start stitching seam 1/4" (6mm) above lowest stitch and slightly to the LEFT. Stitch seam for about 3" (7.5cm). Stitch remainder of seam using your regular presser foot.



15. If you prefer, open out each seam allowance at end of zipper and stitch tape to seam allowance.



16. With RIGHT sides together, stitch front to back at shoulder seams and sides.



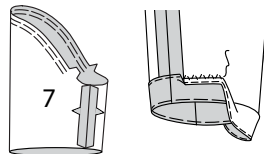
SLEEVES

VIEW A

17. EASESTITCH upper edge of SLEEVE (7) between notches.

With RIGHT sides together, stitch sleeve seam.

Turn up 1-1/2" (3.8cm) sleeve hem. Baste close to fold. FINISH raw edge. Sew hem in place by hand. Press.

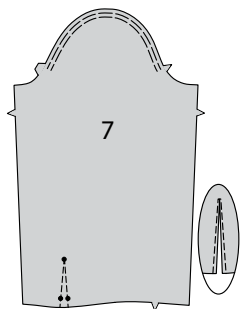


VIEW B, C

18. EASESTITCH upper edge of SLEEVE (7) between notches.

REINFORCE lower edge of sleeve along stitching line. Slash between stitching to upper end.

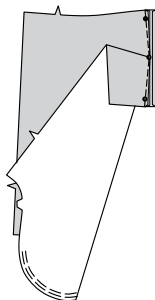
NOTE: See **Armholes/Sleeves: "how to sew a sewing a continuous lap"** video for more assistance.



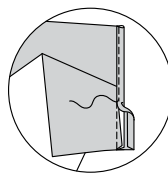
19. Turn in 1/4" (6mm) seam allowance on long unmarked edge of CONTINUOUS LAP (8). Press.



20. Pin right side of continuous lap to WRONG side of sleeve, matching small dots and stitching lines. Stitch.

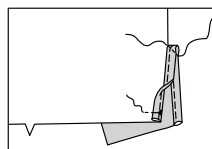


21. Press seam toward continuous lap. Turn pressed edge of continuous lap to OUTSIDE over seam. Stitch. Press.



22. On INSIDE, bring folded edges of continuous lap together. Stitch diagonally across upper end.

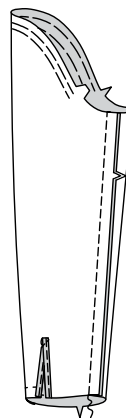
Turn front edge of continuous lap to INSIDE, as shown. Baste across lower edge.



23. To make pleat in sleeve, on OUTSIDE, crease along solid line. Bring crease to broken line. Baste across lower edge. Press.



24. Stitch underarm seam of sleeve sections.



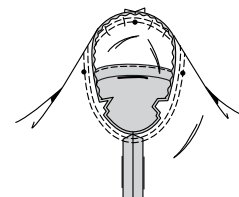
CONTINUE AS FOLLOWS FOR ALL VIEWS

25. Turn sleeve RIGHT side out.

Hold garment WRONG side out with armhole toward you. With RIGHT sides together, pin sleeve to armhole edge with center small dot at shoulder seam, matching underarm seams, notches and remaining small dot. Pull up ease stitches to fit.

To distribute fullness evenly, slide fabric along bobbin threads until there are no puckers or tucks on the seam line. Baste. Stitch. Stitch again 1/8" (3mm) from first stitching. Trim seam below notches close to stitching. Press only the seam allowance, shrinking out fullness.

TIP: See **Armholes/Sleeves: "sewing a set in sleeve"** video for more assistance.



LINING

NOTE: Trim all lining pieces 1" (2.5cm) shorter than fabric sections. Do not trim sleeve lining for **View B, C**.

26. To stitch **DART SEAMS** in front LINING, with RIGHT sides together, bring broken lines together carefully matching small dots. On INSIDE, place pins at RIGHT angles to the broken lines. Stitch the dart seam from outer edge to the point.

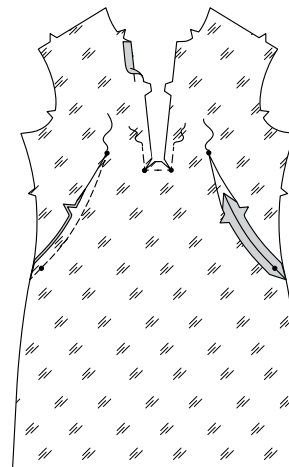
TIP- To prevent a "bubble" at the point, make the last few stitches right on the fold and leave the thread ends long enough to tie a knot. DO NOT back-stitch at the point.

Press the dart seam flat along the stitching to "blend" the stitches, then press dart down.

REINFORCE front along seamline by stitching along stitching lines, pivoting at small dots, as shown.

Clip diagonally to stitching at small dots, being careful not to clip through stitching.

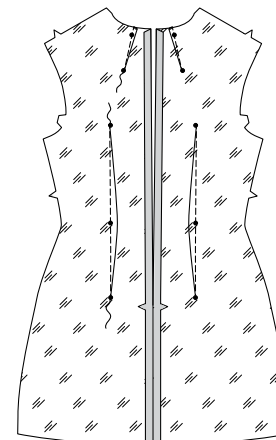
Press under seam allowance on front opening edges.



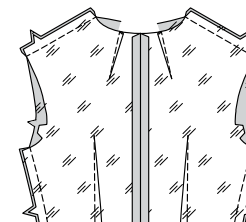
27. Stitch **DARTS** in back LINING sections at shoulder edges. Stitch **DOUBLE POINTED DARTS** at waistline.

TIP: See **Darts: "sewing flat dart"** and **"sewing double pointed dart"** videos for more assistance.

With RIGHT sides together, stitch center back seam of back sections, from lower edge ending at notch. Press seam open.



28. With RIGHT sides together, stitch front to back at shoulders and sides.



29. EASESTITCH upper edge of sleeve LINING between notches.

VIEW A- With RIGHT sides together, stitch underarm seam of sleeve lining sections.

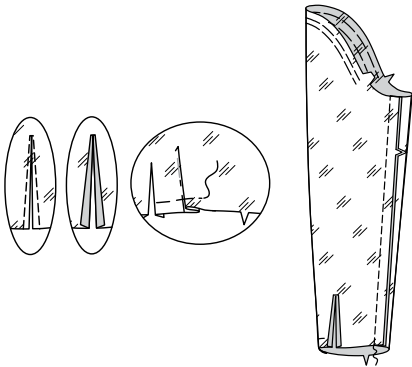


30. VIEW B, C- REINFORCE lower edge of sleeve lining along stitching line. Slash between stitching to upper end. Turn in seam allowance on slashed edges.

Make pleat in sleeve lining in same manner as for sleeve.

Stitch sleeve seam.

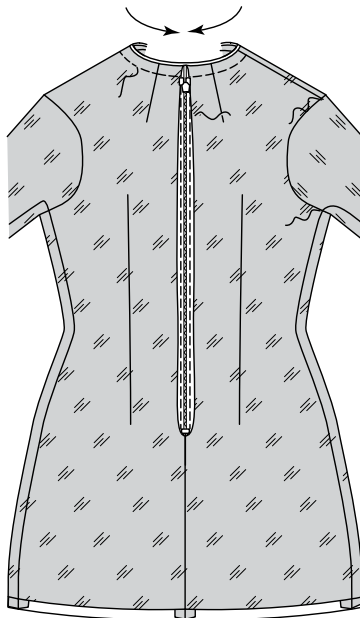
All VIEWS : Insert sleeves into dress lining in same manner as sleeve. See step 25.



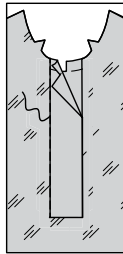
31. With **WRONG** sides together, pin lining to dress having upper raw edges even. Slip sleeve lining into place. Baste neck edges together. **STAYSTITCH** as basted in direction of arrows.

SLIPSTITCH lining to zipper tape, clearing zipper teeth.

TACK sleeves at shoulders and underarms.



32. SLIPSTITCH front opening edges of lining over placket seam.



COLLAR

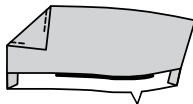
33. Construct two sets of collar sections as follows:

Press under 1/2" (1.3cm) on one notched edge of **COLLAR (6)** facing section.

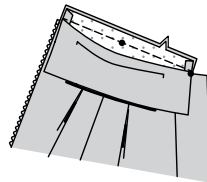
With **RIGHT** sides together, pin interfaced collar to collar facing, having raw edges even. Stitch, leaving notched edge open. **TRIM SEAM** and corners.



34. Turn collar **RIGHT** side out. Press. **UNDERSTITCH** collar as far as possible.



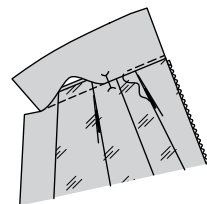
35. On **OUTSIDE**, pin collar to neck edge matching large dots, placing small dots at shoulder seams. Stitch, keeping pressed edge of collar free.



36. On **INSIDE**, pin pressed edge of collar facing over seam, placing pins on **OUTSIDE**.

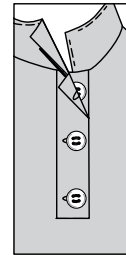
On **OUTSIDE**, **STITCH IN THE DITCH** or "groove" of seam, catching in pressed edge on **INSIDE**.

TIP: Use an adjustable zipper foot when stitching close to zipper stop.

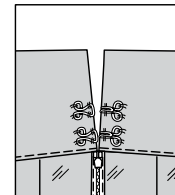


FINISHING

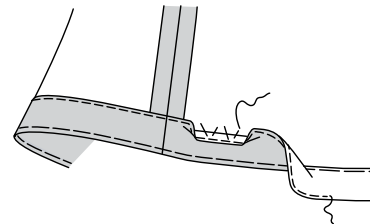
37. Make buttonholes in **RIGHT** front placket at markings. Lap **RIGHT** placket over **LEFT** matching centers. Sew buttons under buttonholes.



38. Sew hook and eyes to back edges of collar at markings.

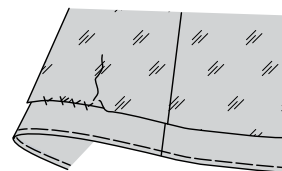


39. Turn up hem on lower edge of garment. Baste close to fold. **FINISH** raw edge. Sew hem in place by hand, easing in fullness if necessary.



40. Turn in 5/8" (1.5cm) on lower edge of lining; place folded edge 5/8" (1.5cm) below raw edge of hem. **SLIPSTITCH** in place.

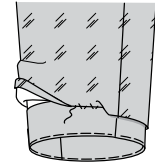
NOTE: A pleat will form at lower edge for wearing ease.



41. VIEW A-

Turn in 5/8" (1.5cm) on lower edge of sleeve lining; place folded edge 5/8" (1.5cm) below raw edge of hem. **SLIPSTITCH** in place.

NOTE: A pleat will form at lower edge for wearing ease.



42. VIEW B, C-

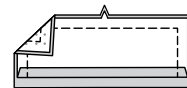
Pin lower edges of sleeve edges together. **SLIPSTITCH** slashed edges of sleeve lining to continuous lap, as shown. **EASESTITCH** lower edge of sleeve through all thicknesses, between opening edges.



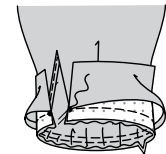
43. Turn in 1/2" (1.3cm) on unnotched edge of one uninterfaced **CUFF (9)** section. Press.



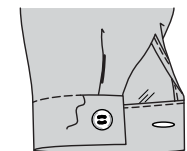
44. With **RIGHT** sides together, pin cuff and interfaced cuff together, having raw edges even. Stitch leaving upper edge open. **TRIM SEAM** and corners.



45. Pin cuff to sleeve, placing small dots at sleeve opening edges. Adjust ease; baste. Stitch, keeping pressed edge free. **TRIM SEAM.** Press seam toward cuff.



46. Turn cuff **RIGHT** side out. Press. Pin pressed edge of cuff over seam, placing pins on **OUTSIDE**. On **OUTSIDE**, **STITCH IN THE DITCH** or "groove" of seam, catching in pressed edge on **INSIDE**. Make buttonholes in cuff at markings. Sew buttons to cuff at markings.





Congrats!

You've completed your sewing adventure

SHARE YOUR LOOK



Post your pattern and tag us
[@simplicity_creative_group](#) and [#simplicitypatterns](#)
for a chance to be featured on our social media.

Look for more PDF patterns at [simplicity.com](https://www.simplicity.com)

Have a question or need help with your sewing project call us at
1-800-782-0323

McCall's
by **design**_{group}

McCall's ©2024 a division of IG Design Group Americas Inc. • Atlanta, GA 30342 USA www.thedesigngroup.com • All Rights Reserved. www.mccall.com • Made in the U.S.A. Fabriqué aux États-Unis.
To be used for individual private home use only and not for commercial or manufacturing purposes. • A usage privé seulement et non à des fins commerciales ou de production en série. • Para uso privado solamente, no se puede utilizar con propósitos de comercialización o de producción en serie.