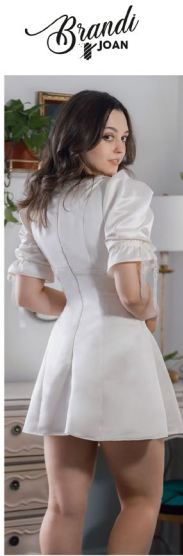


McCall's

M8550



Brandi
by JOAN



Scan QR code for a Sew-Along video tutorial.
Scannez le code QR pour un didacticiel vidéo de couture.



Designed and printed in USA

Average

MISSES' DRESS

Suggested Fabrics: Cotton Blends, Crepes, Eyelet, Satin. **Lining:** Lining Fabrics. **Interfacing:** Lightweight Fusible.

Notions: One 22" (56cm) invisible zipper, 3 $\frac{3}{8}$ yds. (3.3m) of $\frac{3}{4}$ " (2cm) flexible lace trim, 1 yd. (1.0m) of $\frac{3}{8}$ " (1cm) elastic, one pkg. of $\frac{1}{2}$ " (1.3cm) single fold bias tape.

Sizes	6	8	10	12	14	16	18	20	22	24
European	32	34	36	38	40	42	44	46	48	50

BODY MEASUREMENTS: Select pattern size based on body measurements

Bust	30½	31½	32½	34	36	38	40	42	44	46	Ins.
Waist	23	24	25	26½	28	30	32	34	37	39	"
Hip-9" below waist	32½	33½	34½	36	38	40	42	44	46	48	"
Back-neck to waist	15½	15¾	16	16¼	16½	16¾	17	17¼	17½	17¾	"

Dress	45**	2¼	2¼	2¼	2¼	2¾	2¾	2¾	2½	2¾	2¾	Yds.
	60**	1¾	1¾	1¾	1¾	1¾	1¾	2	2	2	2	"
Lining	45***	1½	1½	1½	1¾	1¾	1¾	1¾	1¾	1¾	2	Yds.
Interfacing	20" - ½ yd.											

FINISHED GARMENT MEASUREMENTS (Includes Design and Wearing Ease)

Bust	34	35	36	37½	39½	41½	43½	45½	47½	49½	Ins.	
Waist	25½	26½	27½	29	31	33	35	37	39	41	"	
Width, lower edge												
Dress	60	61	62	63½	65½	67½	69½	71½	73½	75½	Ins.	
Finished back length from base of neck												
Dress	30	31	32	33½	35½	37½	39½	41½	43½	45½	Ins.	

*with nap **without nap

Moins Facile

ROBE POUR JEUNES FEMMES

Tissu Conseillé: Cottonnades, Crêpes, Broderie anglaise, Satin. **Doubleure:** Tissus à doubleure. **Entoilage:** Thermocollant léger.

Mercerie: 1 fermeture à glissière invisible de 56cm, 3.3m de garniture de dentelle souple de 2cm, 1.0m d'élastique de 1cm, 1 paquet de ruban de biais simple de 1.3cm.

Tailles	6	8	10	12	14	16	18	20	22	24
Françaises	34	36	38	40	42	44	46	48	50	52
Européen	32	34	36	38	40	42	44	46	48	50

MESURES DU CORPS: Choisissez la taille du patron basée sur les mesures du corps

Poitrine	78	80	83	87	92	97	102	107	112	117	cm	
Taille	58	61	64	67	71	76	81	87	94	99	"	
Hanches (23cm au-dessous de la taille)												
	83	85	88	92	97	102	107	112	117	122	cm	

Dos du cou à la taille 39.5 40 40.5 41.5 42 42.5 43 44 44.5 45 "

Robe	115cm*	2.1	2.1	2.1	2.1	2.2	2.2	2.2	2.2	2.5	2.5	m
	150cm*	1.7	1.7	1.7	1.7	1.7	1.7	1.7	1.8	1.8	1.8	"

Doubleure	115cm**	1.5	1.5	1.5	1.5	1.6	1.6	1.7	1.7	1.7	1.8	m
Entoilage	51cm - 0.4m											

MESURES DES VÊTEMENTS FINI (Motif et aisance de port compris)

Poitrine	86	89	91	95	100	105	110	116	121	126	cm
Taille	65	67	70	74	79	84	89	94	99	104	"

Largeur à l'ourlet

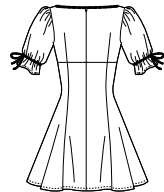
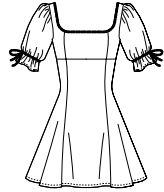
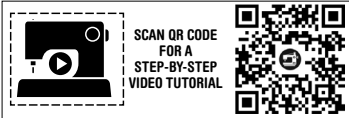
Robe	152	155	157	161	166	171	177	182	187	192	cm
-------------	-----	-----	-----	-----	-----	-----	-----	-----	-----	-----	----

Longueur finie -- dos, votre nuque à l'ourlet

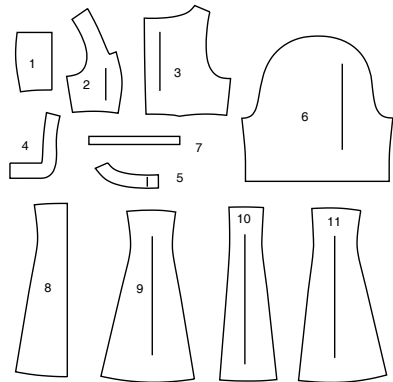
Robe	76	79	81	85	90	95	100	105	110	116	cm
-------------	----	----	----	----	----	----	-----	-----	-----	-----	----

*avec sens **sans sens



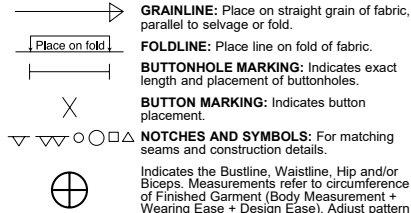


11 PATTERN PIECES



- 1 BODICE FRONT
- 2 BODICESIDE FRONT
- 3 BODICE BACK
- 4 FRONT INTERFACING
- 5 BACK INTERFACING
- 6 SLEEVE
- 7 GUIDE FOR ELASTIC
- 8 SKIRT FRONT
- 9 SKIRT SIDE FRONT
- 10 SKIRT BACK
- 11 SKIRT SIDE BACK

PATTERN MARKINGS



GRAINLINE: Place on straight grain of fabric, parallel to selvage or fold.
FOLDLINE: Place line on fold of fabric.
BUTTONHOLE MARKING: Indicates exact length and placement of buttonholes.
BUTTON MARKING: Indicates button placement.
NOTCHES AND SYMBOLS: For matching seams and construction details.
 Indicates the Bustline, Waistline, Hip and/or Biceps. Measurements refer to circumference of Finished Garment (Body Measurement + Wearing Ease + Design Ease). Adjust pattern if necessary. The measurement excludes pleats, tucks, darts and seam allowances.
SEAM ALLOWANCE: 5/8" (1.5cm) included unless otherwise indicated, but not printed on tissue.

ADJUST IF NECESSARY

Lengthen or Shorten at adjustment lines (==) or where indicated on pattern. If substantial length is added, you may need to purchase additional fabric.
TO SHORTEN: Crease along adjustment line. Make a fold half the amount needed. Tape in place.
TO LENGTHEN: Slash between adjustment lines. Spread amount as needed, keeping edges parallel. Tape over paper.
 When Alteration lines are not on tissue, lengthen or shorten at lower edge.

CUTTING AND MARKING

SHRINK FABRIC if not labeled pre-shrunk. Press.
CIRCLE LAYOUT for View, Size, Fabric Width.
 Use **WITH NAP** layout for fabrics with one-way designs, nap, pile or surface shading. Because most knits have surface shading, a with nap layout is used.
 For **DOUBLE THICKNESS (WITH FOLD)** - fold fabric with right sides together.
*** DOUBLE THICKNESS (WITHOUT FOLD)** - For fabrics with nap, fold fabric crosswise, right sides together. Mark as shown. Cut along crosswise fold of fabric (A). Turn upper layer 180° so arrows go in same direction and place over lower layer, right sides together (B).
 For **SINGLE THICKNESS** - place fabric right side up. (For Fur Pile fabrics, place pile side down.)

★ Cut other pieces first, allowing enough fabric to cut this piece. Open fabric. For "Cut 1" pieces, cut piece once on single layer of fabric with piece face up on right side of fabric.
 Pattern may have cutting lines for several sizes. Select the proper cutting line or pattern pieces for your size.
 Before **CUTTING** place all pieces on fabric according to layout. Pin. (Layouts show approximate position of pattern pieces; position may vary according to your pattern size.) Cut **ACCURATELY**, cutting notches outward.
 Before removing pattern, **TRANSFER MARKINGS** and lines of construction to Wrong Side of fabric, using the Pin and Chalk Pencil method or Tracing Paper and Dressmaker Wheel. Markings needed on right side of fabric should be thread traced.
NOTE: Broken-line boxes (a! b! c!) in layouts represent pieces cut by measurements provided.

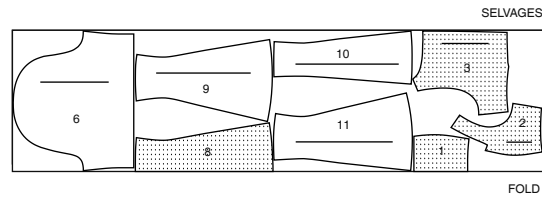
CUTTING LAYOUTS

RIGHT SIDE OF PATTERN	WRONG SIDE OF PATTERN	RIGHT SIDE OF FABRIC	WRONG SIDE OF FABRIC
-----------------------	-----------------------	----------------------	----------------------

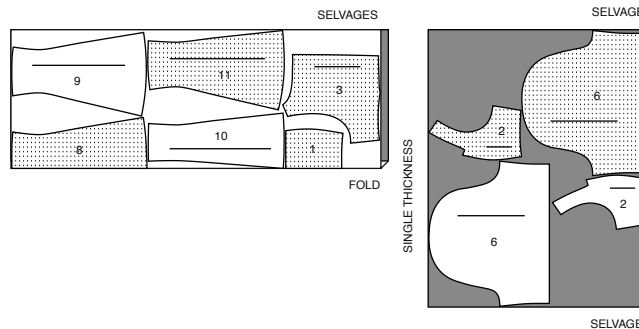
DRESS

PIECES 1 2 3 6 8 9 10 11
 PIECE 7 IS CUT OF ELASTIC

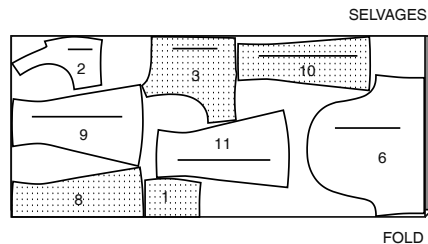
45" (115CM)
 WITH NAP
 SIZES 6 8 10 12 14 16 18 20



45" (115CM)
 WITH NAP
 SIZES 22 24



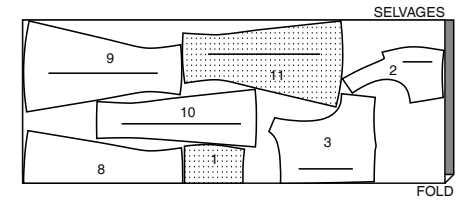
60" (150CM)
 WITH NAP
 ALL SIZES



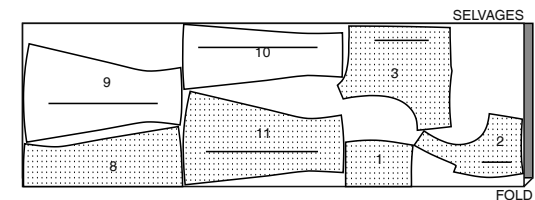
LINING

PIECES 1 2 3 8 9 10 11

45" (115CM)
 WITHOUT NAP
 SIZES 6 8 10 12 14 16



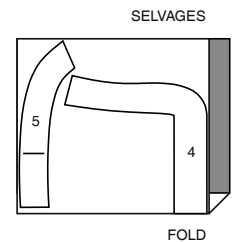
45" (115CM)
 WITHOUT NAP
 SIZES 18 20 22 24



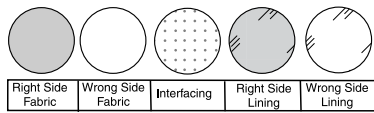
INTERFACING

PIECES 4 5

20" (51CM)
 ALL SIZES

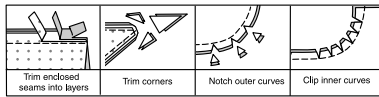


SEWING INFORMATION
FABRIC KEY



SEAM ALLOWANCES

Use 5/8" (1.5cm) seam allowances unless otherwise indicated.



PIN AND FIT

Pin or baste seams, **RIGHT SIDE TOGETHER**, matching notches. Fit garment before stitching major seams.

PRESS

Press seam allowances flat; then open unless otherwise stated. Clip where necessary so they lie flat.

GLOSSARY

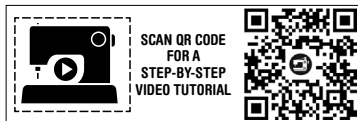
Sewing terms appearing in **BOLD TYPE** in Sewing Instructions are explained below.

GATHER - Stitch along seamline and again 1/4" (6mm) away in seam allowance, using long machine stitches. Pull thread ends when adjusting to fit.

NARROW HEM - Turn in hem; press, easing in fullness if necessary. Open out hem. Turn in again so raw edge is along crease; press. Turn in along crease; stitch.

SLIPSTITCH - Slide needle through a folded edge, then pick up a thread of underneath fabric.

UNDERSTITCH - Open out facing or underside of garment; stitch to seam allowance close to seam.



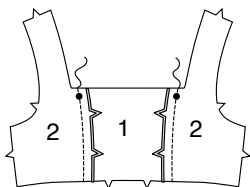
PATTERN PIECES WILL BE IDENTIFIED BY NUMBERS THE FIRST TIME THEY ARE USED.

STITCH SEAMS WITH RIGHT SIDES TOGETHER UNLESS OTHERWISE STATED.

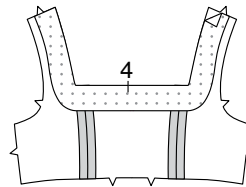
DRESS

BODICE

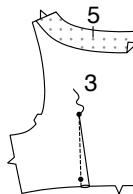
1. Stitch **BODICE SIDE FRONT** (2) sections to side edges of **BODICE FRONT** (1), **RIGHT** sides together, matching notches and large dots.



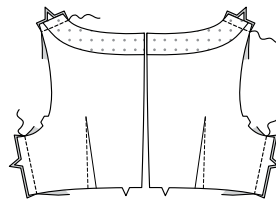
2. Fuse **FRONT INTERFACING** (4) to **WRONG** side of bodice front matching center fronts, having shoulder and neck raw edges even.



3. Fuse **BACK INTERFACING** (5) to **WRONG** side of **BODICE BACK** (3), having back, neck and shoulder raw edges even. Stitch dart in bodice back. Press dart toward center.

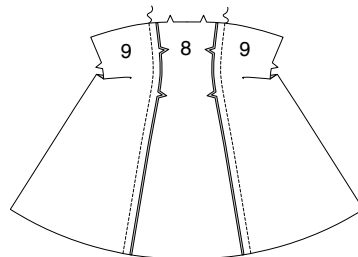


4. Stitch bodice front to bodice back at shoulders and sides.

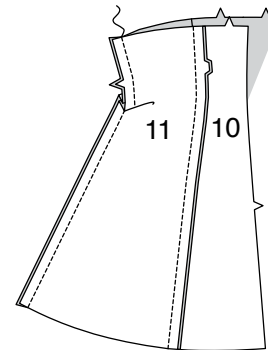


SKIRT

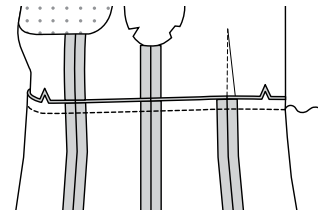
5. Stitch **SKIRT SIDE FRONT** (9) to side edges of **SKIRT FRONT** (8), **RIGHT** sides together, matching notches.



6. Stitch **SKIRT SIDE BACK** (11) to **SKIRT BACK** (10), **RIGHT** sides together, matching double notches. Stitch skirt back to skirt front at sides.



7. Pin upper edge of skirt to lower edge of bodice, **RIGHT** sides together, matching centers, seams, and notches. Stitch. Press seam toward bodice.

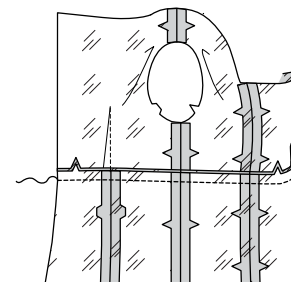


LINING

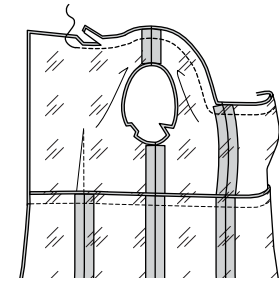
NOTE: Trim 1" (2.5cm) from lower edges of each skirt **LINING** section.

8. Prepare and stitch bodice **LINING** together in same manner as bodice.

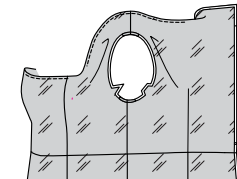
Stitch seams in skirt **LINING** in same manner as skirt. Pin lower edge of bodice lining to upper edge of skirt lining matching centers, seams, and notches. Stitch. Press seam toward bodice lining.



9. With **RIGHT** sides together, pin lining to neck edge of dress, matching centers, and seams. Stitch upper edge, ending stitching 3" (7.5cm) from back opening edges. Trim seams. Do not trim unstitched seam allowance.



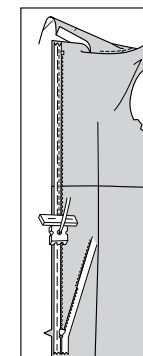
10. **UNDERSTITCH** lining, ending 3-1/2" (9cm) from back opening edges. Turn lining to inside. Press.



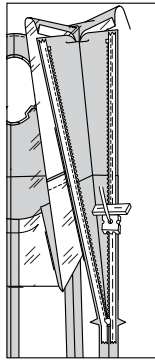
ZIPPER

NOTE: Stitch the invisible zipper using an invisible zipper foot. If the zipper is longer than the zipper opening, adjust after the zipper is inserted.

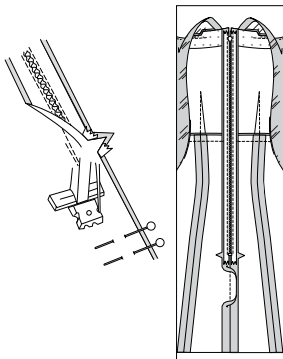
11. Open the zipper and press the tape using a cool iron. Open out lining. Keep the free upper edges of back lining out of the way. On **OUTSIDE**, pin **RIGHT** side of the zipper face down on the **RIGHT** side of the zipper opening. Have the coil along the seam line, the tape within the seam allowance and the top stop 3/4" (2cm) below upper edge, as shown. Hand-baste along center of the tape. Position zipper foot at the top of the zipper with **RIGHT** groove of the foot over coil. Stitch along tape to the notch. Back-stitch to reinforce.



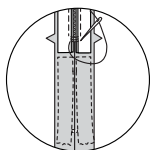
12. Pin the remaining half of the zipper to the LEFT side of the zipper opening in same manner. Make sure the upper and lower edges of the garment are even. Hand-baste along the center of the tape. Position zipper foot at the top of the zipper with LEFT groove over the coil. Stitch along tape to the notch. Back-stitch to reinforce.



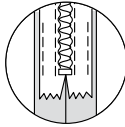
13. Close zipper and check that it is invisible from the OUTSIDE. Pull the free ends of the zipper tape away from the seam allowance. Pin remaining center back seam together below zipper. Position zipper foot all the way to the LEFT so the needle goes down through the outer notch of the foot. Start stitching seam 1/4"(6mm) above lowest stitch and slightly to the LEFT. Stitch seam for about 3"(7.5cm). Stitch remainder of seam using your regular presser foot.



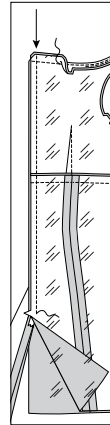
14. If the zipper is longer than the opening, using a strong thread, hand-sew a few small stitches across ends of coils at end of opening. Trim away lower end of zipper tape to within 5/8"(1.5cm) of hand-stitches.



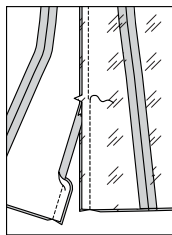
15. If you prefer, open out each seam allowance at end of zipper and stitch tape to seam allowance.



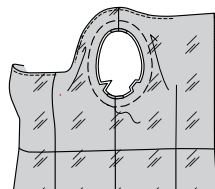
16. Open out back opening edges of dress, rolling the zipper teeth away from the opening edge. Turn back lining to OUTSIDE. With RIGHT sides together, pin back and remainder of back neck edges of dress and lining together. Stitch remaining back neck connection to previous stitching. Trim neck seam. Stitch along back opening edge 1/2"(1.3cm) from raw edges, keeping zipper teeth free and ending at notch. Trim corner. Do not trim center back edges.



17. Keeping skirt free, stitch remainder of lining center back seam below zipper.

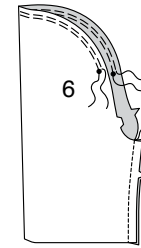


18. Turn lining to inside. Press. Baste armhole edges together.

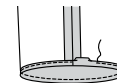


SLEEVES

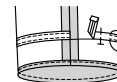
19. GATHER upper edge of SLEEVE (6) between outer small dots. Stitch sleeve seam.



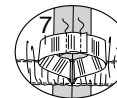
20. Make 5/8"(1.5cm) NARROW HEM on lower edge of sleeve.



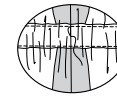
21. To form casing for elastic, on inside, pin bias tape to sleeve, placing one lower edge of tape along placement line, as shown, turning in 1/2"(1.3cm) on ends. Stitch close to both long edges.



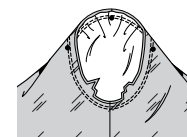
22. Cut two pieces of elastic, using GUIDE FOR ELASTIC (7). Insert elastic through opening in casing. Lap ends; hold with safety pin. Try on; adjust if necessary. Stitch ends of elastic securely.



23. SLIPSTITCH opening.

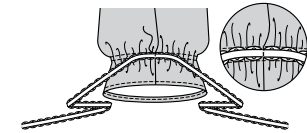


24. With right sides together, pin sleeve into armhole with center small dot at shoulder seam, matching underarm seams, notches and remaining small dots. Adjust gathers; baste. Stitch. Stitch again 1/4"(6mm) away in seam allowance. Trim close to stitching. To finish seam, zigzag or serge seam allowances together, if desired.

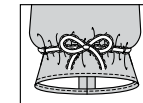
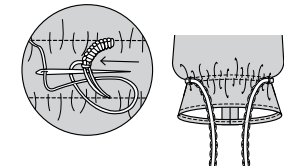


FINISHING

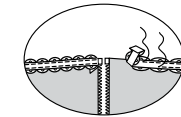
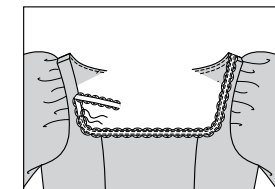
25. For each sleeve, cut a piece of flexible trim 40"(102cm) long. Fold trim in half and mark center. Pin center of trim to sleeve seam, over casing stitching. Stitch through trim along seamline.



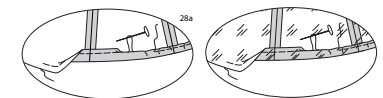
26. Measure out 4"(10cm) from each side of sleeve seam and mark. Make a thread carrier across casing at markings. Bring ends of trim around sleeve and through carriers and tie in a bow.



27. Pin remainder of flexible trim to dress, having upper edge of trim along neck edge, turning in ends 1/2"(1.3cm) at back opening edges. Stitch close to both long edges of trim.



28. Stitch 1/4"(6mm) from lower edge of dress, using long machine stitches, as shown. Turn up a 5/8"(1.5cm) hem at lower edge of dress, turning under 1/4"(6mm) on raw edge. Pull thread to ease in fullness. Stitch. Hem lower edge of lining in same manner.





Congrats!

You've completed your sewing adventure

**SHARE
YOUR** LOOK



Post your pattern and tag us
[@simplicity_creative_group](#) and [#simplicitypatterns](#)
for a chance to be featured on our social media.

Look for more PDF patterns at [simplicity.com](#)

Have a question or need help with your sewing project call us at
1-800-782-0323

McCall's
by **design**_{group}

McCall's ©2024 a division of IG Design Group Americas Inc. • Atlanta, GA 30342 USA [www.thedesigngroup.com](#) • All Rights Reserved. [www.mccall.com](#) • Made in the U.S.A. Fabriqué aux États-Unis.

To be used for individual private home use only and not for commercial or manufacturing purposes. • A usage privé seulement et non à des fins commerciales ou de production en série. • Para uso privado solamente, no se puede utilizar con propósitos de comercialización o de producción en serie.