

# McCall's COSTUMES

M8549



Designed and printed in USA

Shop all the pattern brands you love @

**Simplicity.com**

Average  
Moins Facile



A



B



C



D

## CHILDREN'S AND MISSES' PRINCESS COSTUME

**Suggested Fabrics:** Brocade, Chintz, Cotton Blends, Faille, Jacquard, Satin, Silk Dupioni, Taffeta, Velvet. **B Contrast 3 (Sleeve Ruffles) and C,D Contrast 3 (Lower Sleeves) also in Sheer fabrics such as Lace, Organza, Voile. Lining:** Lining Fabric.

**Notions:** A, B, C, D: One 14" (36cm) zipper for Children, 20" (51cm) zipper for Misses, hook and eye. **Also for A:** 3/4" (1cm) ribbon: 7 1/2 yds. (1.8m) for Children, 2 1/2 yds. (2.0m) for Misses, ten ribbon rosettes, flat scalloped lace trim: 3 1/2 yds. (3.3m) of 4" (10cm) wide for Children, 4 1/2 yds. (4.1m) of 7" (18cm) wide for Misses. **Also for B:** 1 1/2" (4cm) ruffled or pre-pleated trim: 2 1/2 yds. (1.9m) for Children, 2 1/2 yds. (2.4m) for Misses. **Also for C, D:** 3/4" (6mm) elastic 3/4 yd. (0.6m) for Children, 3/4 yd. (0.8m) for Misses. **Also for C:** 3/4" (1cm) ribbon: 1 1/2 yds. (1.8m) for Children, 2 1/2 yds. (2.0m) for Misses, 3/8" (1.5cm) gimp braid: 5 1/2 yds. (5.1m) for Children, 6 1/2 yds. (6.3m) for Misses. **Also for D:** 2 1/2" (6cm) flat lace: 12 yds. (11.0m) for Children, 15 yds. (13.8m) for Misses.

Sizes	CHILDREN'S						MISSES'			
	3	4	5	6	7	8	S (8-10)	M (12-14)	L (16-18)	XL (20-22)
<b>A, B, C, D Contrast 1 (Bodice Front, Skirt Front)</b>										
45"*	7/8	1	1	1	1 1/4	1 1/2	1 3/4	1 3/4	1 3/4	1 3/4
45"*	4	4 1/4	4 1/4	4 1/4	4 1/4	5	6 1/4	6 1/4	7	7 1/4
<b>Costume A</b>	45"*	3 1/4	3 3/8	3 3/8	3 3/8	4 1/4	4 1/4	5 1/4	6	6 1/4
<b>A, C, D Contrast 2 (Skirt Side Front)</b>										
45"*	7/8	7/8	1	1	1	1 1/4	1 1/4	1 1/4	1 1/4	1 1/4
<b>Costume B</b>	45"*	3 1/4	3 3/8	3 3/8	3 3/8	3 3/8	4 1/4	5 1/4	5 1/4	6
<b>B Contrast 2 (Skirt Side Front, Bow, Knot)</b>										
45"*	7/8	7/8	1	1	1	1 1/4	1 1/4	1 1/2	1 1/2	1 1/2
<b>B Contrast 3 (Sleeve Ruffle, Upper Sleeve Ruffle)</b>										
45"*	3/8	5/8	3/4	3/4	3/4	3/4	1 1/4	1 1/4	1 3/4	1 3/4
<b>Costume C, D</b>	45"*	3 1/4	3 3/8	3 3/8	3 3/8	3 3/8	4 1/4	5 1/4	5 1/4	6 1/4
<b>C, D Contrast 3 (Lower Sleeve)</b>										
45"*	3/8	3/8	3/8	3/8	3/8	3/8	1	1	1 1/4	1 1/4

**NOTE:** Please refer to the sewing instructions for **FINISHED GARMENT MEASUREMENTS.**

## DÉGISEMENT DE PRINCESSE POUR ENFANTS ET JEUNES FEMMES

**Tissus Conseillés:** Brocart, Chintz, Cottonnades, Faille, Jacquard, Sole Dupioni, Taffetas, Velours extensible. **B Contrast 3 (Volants de manche) et C, D Contrast 3 (Volants Inférieur) aussi en Tissue transparent tels que Dentelle, Organza, Voile. Doublure:** Tissue à doublure.

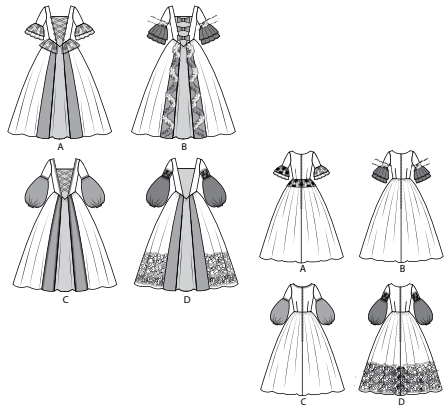
**Merci:** A, B, C, D: 1 fermeture à glissière de 36cm pour Enfants, fermeture à glissière de 51cm pour Jeunes Femmes, 1 agrafe. **Aussi pour A:** Ruban de 1cm: 1.8m pour Enfants, 2.0m pour Jeunes Femmes, 10 rosaces en ruban, festonné dentelle plate: 3.3m de 10cm de large pour enfants, 4.1m de 18cm de large pour Jeunes Femmes. **Aussi pour B:** Gamiture volant ou pré-plissé de 4cm: 1.9m pour Enfants, 2.4m pour Jeunes Femmes. **Aussi pour C, D:** Elastique de 6mm: 0.6m pour Enfants, 0.8m pour Jeunes Femmes. **Aussi pour C:** Ruban de 1cm: 1.8m pour Enfants, 2.0m pour Jeunes Femmes, gamiture de tresse gimp de 1.5cm: 5.1m pour Enfants, 6.3m pour Jeunes Femmes. **Aussi pour D:** Dentelle plate de 6cm: 11.0m pour Enfants, 13.8m pour Jeunes Femmes.

Tailles	ENFANTS						JEUNES FEMMES			
	3	4	5	6	7	8	P	M	G	TG
<b>A, B, C, D Contrast 1 (Corsage devant, Jupe devant)</b>										
115cm*	0.8	0.8	0.9	0.9	0.9	1.0	1.3	1.3	1.3	1.3
<b>A, B, C, D Doublure</b>	115cm*	3.7	3.8	4.0	4.1	4.3	4.6	6.2	6.3	6.4
<b>Dégisement A</b>	115cm*	3.0	3.1	3.3	3.5	3.8	4.0	5.4	5.5	5.8
<b>A, C, D Contrast 2 (Jupe côté devant)</b>										
115cm*	0.8	0.8	0.8	0.8	0.9	0.9	1.3	1.3	1.3	1.3
<b>Dégisement B</b>	115cm*	3.0	3.1	3.2	3.4	3.5	3.7	5.1	5.3	5.4
<b>B Contrast 2 (Jupe côté devant, noeud)</b>										
115cm*	0.8	0.8	0.8	0.9	0.9	0.9	1.4	1.4	1.4	1.4
<b>B Contrast 3 (Volant de la manche, Volant supérieur de la manche)</b>										
115cm*	0.6	0.6	0.6	0.7	0.7	0.7	1.5	1.5	1.6	1.6
<b>Dégisement C, D</b>	115cm*	3.0	3.1	3.2	3.4	3.5	3.7	5.1	5.3	5.4
<b>C, D Contrast 3 (Manche inférieure)</b>										
115cm*	0.6	0.7	0.7	0.7	0.7	0.7	0.9	0.9	0.9	1.0

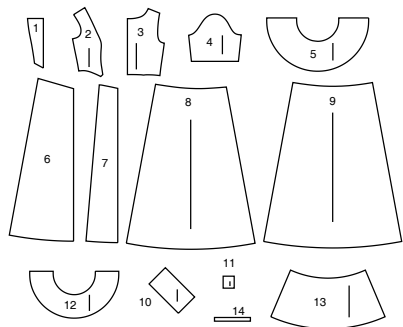
**NOTE:** S'il vous plaît, reportez-vous aux instructions de couture pour les **MESURES DU VÊTEMENT FINI.**

\*with nap \*\*without nap

\*avec sens \*\*sans sens



14 PATTERN PIECES



- 1 BODICE FRONT - A,B,C,D
- 2 BODICE SIDE FRONT - A,B,C,D
- 3 BODICE BACK - A,B,C,D
- 4 UPPER SLEEVE - A,B,C,D
- 5 SLEEVE RUFFLE - A,B
- 6 SKIRT FRONT - A,B,C,D
- 7 SKIRT FRONT BAND - A,B,C,D
- 8 SKIRT SIDE FRONT - A,B,C,D
- 9 SKIRT BACK - A,B,C,D
- 10 BOW - B
- 11 KNOT - B
- 12 UPPER SLEEVE - B
- 13 LOWER SLEEVE - C,D
- 14 ELASTIC GUIDE FOR SLEEVE - C,D

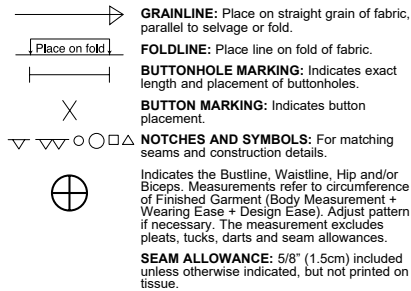
Sizes	CHILDREN'S							MISSES'			
	3	4	5	6	7	8	5	M	L	XL	
	(8-10)(12-14)(16-18)(20-22)										

**FINISHED GARMENT MEASUREMENTS (Includes Design and Wearing Ease)**

Measure	24½	25½	26½	27½	28½	29½	35½	39	43	47	Ins.
A,B,C,D Bust	22	23	24	25	26	27	27	30½	34½	38½	"
A,B,C,D Waist	34	35½	37½	39	41½	43½	58	58½	59	59½	Ins.

Finished back length from base of neck

PATTERN MARKINGS



ADJUST IF NECESSARY

Lengthen or Shorten at adjustment lines (==) or where indicated on pattern. If substantial length is added, you may need to purchase additional fabric.

**TO SHORTEN:** Crease along adjustment line. Make a fold half the amount needed. Tape in place.

**TO LENGTHEN:** Slash between adjustment lines. Spread amount as needed, keeping edges parallel. Tape over paper.

When Alteration lines are not on tissue, lengthen or shorten at lower edge.

CUTTING AND MARKING

**SHRINK FABRIC** if not labeled pre-shrunk. Press.

**CIRCLE LAYOUT** for View, Size, Fabric Width.

Use **WITH NAP** layout for fabrics with one-way designs, nap, pile or surface shading. Because most knits have surface shading, a with nap layout is used.

For **DOUBLE THICKNESS (WITH FOLD)** - fold fabric with right sides together.

**\* DOUBLE THICKNESS (WITHOUT FOLD)** - For fabrics with nap, fold fabric crosswise, right sides together. Mark as shown. Cut along crosswise fold of fabric (A). Turn upper layer 180° so arrows go in same direction and place over lower layer, right sides together (B).

For **SINGLE THICKNESS** - place fabric right side up. (For Fur Pile fabrics, place pile side down.)

★ Cut other pieces first, allowing enough fabric to cut this piece. Open fabric. For "Cut 1" pieces, cut piece once on single layer of fabric with piece face up on right side of fabric.

Pattern may have cutting lines for several sizes. Select the proper cutting line or pattern pieces for your size.

Before **CUTTING** place all pieces on fabric according to layout. Pin. (Layouts show approximate position of pattern pieces; position may vary according to your pattern size.) Cut **ACCURATELY**, cutting notches outward.

Before removing pattern, **TRANSFER MARKINGS** and lines of construction to Wrong Side of fabric, using the Pin and Chalk Pencil method or Tracing Paper and Dressmaker Wheel. Markings needed on right side of fabric should be thread traced.

**NOTE:** Broken-line boxes (a|b|c) in layouts represent pieces cut by measurements provided.

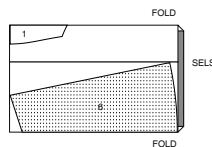
CUTTING LAYOUTS

RIGHT SIDE OF PATTERN	WRONG SIDE OF PATTERN	RIGHT SIDE OF FABRIC	WRONG SIDE OF FABRIC
-----------------------	-----------------------	----------------------	----------------------

CHILDREN'S

A,B,C,D CONTRAST  
USE PIECES 1 6

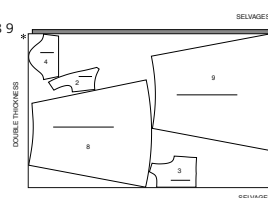
45" (115CM)  
WITH NAP  
ALL SIZES



COSTUME B

USE PIECES 2 3 4 8 9

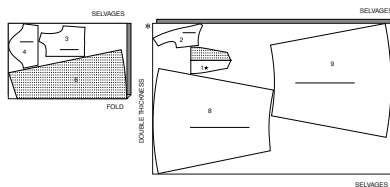
45" (115CM)  
WITH NAP  
ALL SIZES



A,B,C,D LINING

USE PIECES 1 2 3 4 6 8 9  
CUT ONE OF PIECE 1

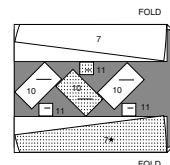
45" (115CM)  
WITHOUT NAP  
ALL SIZES



B CONTRAST 2 (SKIRT FRONT BAND, BOW, KNOT)

USE PIECES 7 10 11

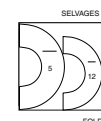
45" (115CM)  
WITH NAP  
ALL SIZES



B CONTRAST 3 (SLEEVE RUFFLE, UPPER SLEEVE RUFFLE)

USE PIECES 5 12

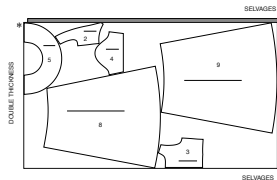
45" (115CM)  
WITH NAP  
ALL SIZES



COSTUME A

USE PIECES 2 3 4 5 8 9

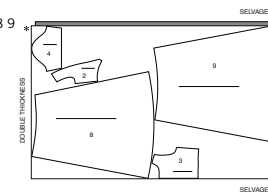
45" (115CM)  
WITH NAP  
ALL SIZES



COSTUME C,D

USE PIECES 2 3 4 8 9

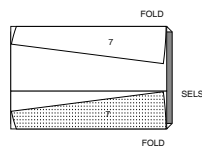
45" (115CM)  
WITH NAP  
ALL SIZES



A,C,D CONTRAST 2 (SKIRT FRONT BAND)

USE PIECE 7

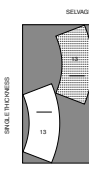
45" (115CM)  
WITH NAP  
ALL SIZES



C,D CONTRAST 3 (LOWER SLEEVE)

USE PIECE 13

45" (115CM)  
WITH NAP  
ALL SIZES

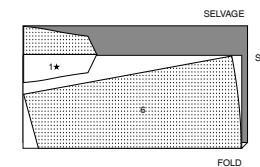


MISSES'

A,B,C,D CONTRAST 1

USE PIECES 1 6

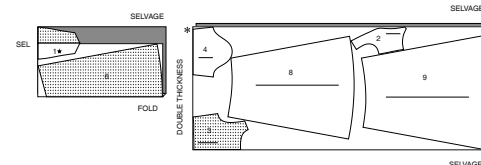
45" (115CM)  
WITH NAP  
ALL SIZES



A,B,C,D LINING

USE PIECES 1 2 3 4 6 8 9

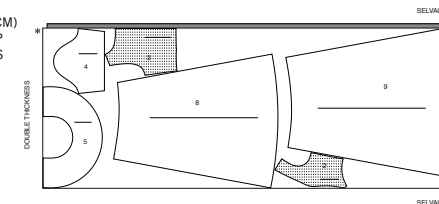
45" (115CM)  
WITHOUT NAP  
ALL SIZES



COSTUME A

USE PIECES 2 3 4 5 8 9

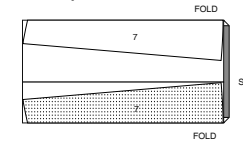
45" (115CM)  
WITH NAP  
ALL SIZES



A,C,D CONTRAST 2 (SKIRT FRONT BAND)

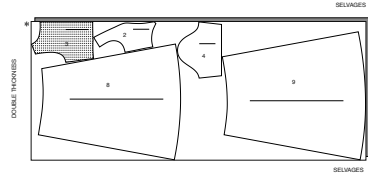
USE PIECE 7

45" (115CM)  
WITH NAP  
ALL SIZES



**COSTUME B**  
USE PIECES 2 3 4 8 9

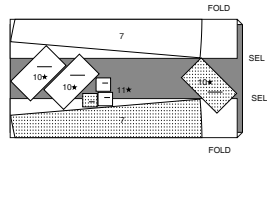
45" (115CM)  
WITH NAP  
ALL SIZES



**B CONTRAST 2 (SKIRT FRONT BAND, BOW, KNOT)**

USE PIECES 7 10 11

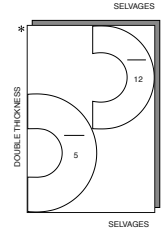
45" (115CM)  
WITH NAP  
ALL SIZES



**B CONTRAST 3 (SLEEVE RUFFLE, UPPER SLEEVE RUFFLE)**

USE PIECES 5 12

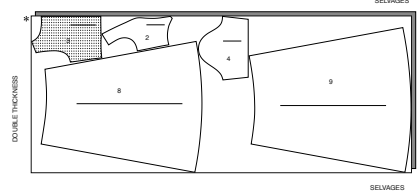
45" (115CM)  
WITH NAP  
ALL SIZES



**COSTUME C,D**

USE PIECES 2 3 4 8 9  
PIECE 14 IS CUT OF ELASTIC

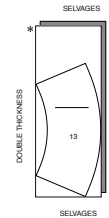
45" (115CM)  
WITH NAP  
ALL SIZES



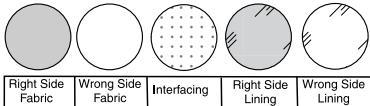
**C,D CONTRAST 3 (LOWER SLEEVE)**

USE PIECE 13

45" (115CM)  
WITH NAP  
ALL SIZES

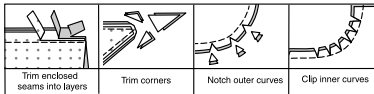


**SEWING INFORMATION**  
FABRIC KEY



**SEAM ALLOWANCES**

Use 1/4" (6mm) seam allowances unless otherwise indicated.



**PIN AND FIT**

Pin or baste seams, **RIGHT SIDE TOGETHER**, matching notches. Fit garment before stitching major seams.

**PRESS**

Press seam allowances flat; then open unless otherwise stated. Clip where necessary so they lie flat.

**GLOSSARY**

Sewing methods in **BOLD TYPE** have Sewing Tutorial Video available. Scan QR CODE to watch videos:

**FLAT DART** – See **Darts**: “sewing flat dart” video.

**SET IN SLEEVE** – See **Armholes/Sleeves**: “sewing a set in sleeve” video.

**SLIPSTITCH** – See **Hand Stitching**: “how to slip stitch” video.

**STAYSTITCH** – See **Machine Stitches**: “how to stay stitching” video.

**TRIM SEAM** – See **Seams**: “how to trim, clip and layer seams” video.

**UNDERSTITCH** – See **Machine Stitches**: “how to understitch” video.

**GLOSSARY OF SEWING METHODS**

Sewing methods shown in **ITALICS** are defined below:

**EASE/GATHER** – Loosen needle tension slightly. With **RIGHT** side up, stitch 5/8" (1.5cm) from cut edge using a long stitch. Stitch again 1/4" (6mm) from the first stitching within the seam allowance.

SEWING TUTORIALS



Build your skills: viewing short, easy-to-follow videos at [simplicity.com/sewingtutorials](http://simplicity.com/sewingtutorials)

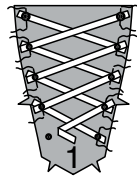
**PATTERN PIECES WILL BE IDENTIFIED BY NUMBERS THE FIRST TIME THEY ARE USED.**

**STITCH 5/8" (1.5CM) SEAMS WITH RIGHT SIDES TOGETHER UNLESS OTHERWISE STATED.**

**PRINCESS COSTUME A, B, C, D**

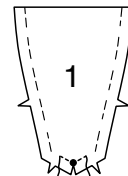
**NOTE:** Trim 1/2" (1.3cm) from lower edge of **SKIRT FRONT (6)**, **SKIRT SIDE FRONT (8)**, and **SKIRT BACK (9)** lining sections before stitching seams.

**1. FOR VIEW A, C** – Cut lengths of 3/8" (1cm) ribbon to diagonally crisscross **BODICE FRONT (1)** over the upper large dots and remaining small dots, as shown. Baste in place along seamline.

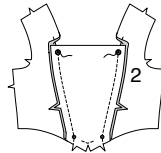


**CONTINUE AS FOLLOWS FOR ALL VIEWS**

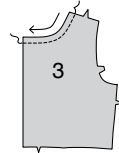
**2.** To reinforce upper edge of **BODICE FRONT (1)** at center large dot, stitch along seam line for about 1" (2.5cm) each side of large dot, stitching through dot, as shown. Clip to stitching at dot.



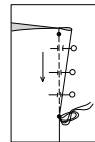
**3.** With **RIGHT** sides together and raw edges even, pin bodice front to **BODICE SIDE FRONT (2)** at side front edges, matching small dots, large dots, and notches. Stitch from lower edge to large dot, back-stitching at dot to reinforce the seam. **TRIM SEAM**; clip curves. Press seams away from center.



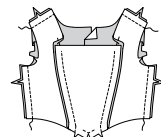
**4.** To **STAYSTITCH** neck edge of **BODICE BACK (3)**, stitch 1/2" (1.3cm) from cut edge in direction of arrows. This stitching stays in permanently to prevent stretching on curved edges. (Shown only in the first illustration.)



**5.** To make **FLAT DART**, with **RIGHT** sides together, fold the fabric through the center of the dart, bringing broken lines and small dots together. On **INSIDE**, place pins at **RIGHT** angles to the broken lines. Stitch the dart from wide end to point. Press the dart flat along the stitching to “blend” the stitches, then press dart toward center.

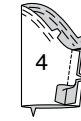


**6.** Stitch bodice front to bodice back at side and shoulder edges.

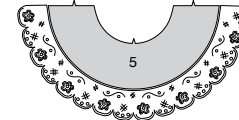


**SLEEVE A, B**

**7. EASE** upper edge of **UPPER SLEEVE (4)** between the notches. Stitch underarm edges together.



**8. FOR VIEW A** – Cut a piece of flat scalloped lace trim the length of lower edge of **SLEEVE RUFFLE (5)**.



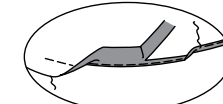
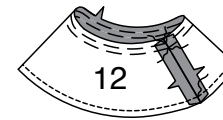
**9.** Stitch ends stitching again 1/4" (6mm) away in seam allowance of lace with **RIGHT** sides together in a 5/8" (1.5cm) seam. Trim seam. Gather upper edge by stitching 1/4" (6mm) and 1/2" (1.3cm) from straight edge using a long machine stitch.



**10.** On **OUTSIDE**, pin straight edge of lace to lower edge of sleeve, having edges even, matching seams, and pulling up gathering stitches to fit. Distribute gathers evenly. Baste.



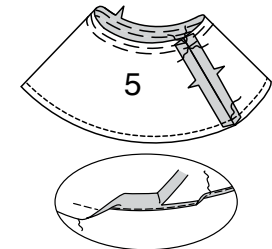
**11. FOR VIEW B** – Stitch ends of **UPPER SLEEVE RUFFLE (12)**. **GATHER** upper edge. Machine stitch 1/4" (6mm) from lower edge. Press up hem along stitching. Stitch close to pressed edge. Trim close to stitching. Press under another 1/8" (3mm) and stitch in place.



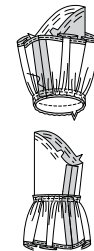
**12.** On **OUTSIDE**, pin upper sleeve ruffle lower edge of sleeve, having edges even, matching seams and notches. Pull up gathering stitches to fit. Distribute gathers evenly. Baste.



**13. FOR VIEW A, B** – Stitch ends of **SLEEVE RUFFLE (5)**. **GATHER** upper edge. Machine stitch 1/4" (6mm) from lower edge. Press up hem along stitching. Stitch close to pressed edge. Trim close to stitching. Press under another 1/8" (3mm) and stitch in place.

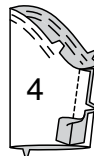


**14.** On **OUTSIDE**, pin sleeve ruffle lower edge of sleeve, having edges even, matching seams, and pulling up gathering stitches to fit. Distribute gathers evenly. Baste; stitch. Press seam toward sleeve, pressing ruffles out.

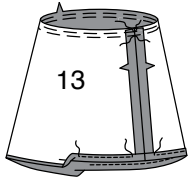


**SLEEVE C, D**

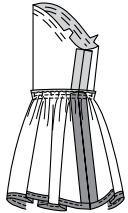
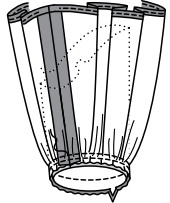
**15. EASE** upper edge of **UPPER SLEEVE (4)** between the notches. Stitch underarm edges together.



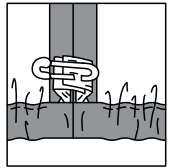
16. Stitch underarm edges of LOWER SLEEVE (13). **GATHER** upper edge. To make casing for elastic, press up 5/8" (1.5cm) on lower edge, and turn under raw edge 1/4" (6mm). Press. Stitch close to inner pressed edge, leaving an opening to insert elastic.



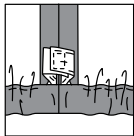
17. With **RIGHT** sides together and raw edges even, pin lower sleeve to sleeve, matching seams and notches, pulling up gathering stitches to fit. Distribute gathers evenly. Baste; stitch. Press seam toward upper sleeve, pressing out lower sleeve.



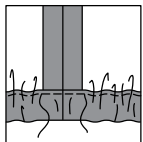
18. Cut a piece of elastic the length of the ELASTIC GUIDE FOR SLEEVE (14). Insert elastic through opening in lower sleeve casing. Overlap ends and hold with a safety pin. Try on garment and adjust to fit.



19. Stitch ends of elastic together, securely.

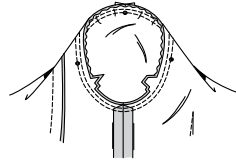


20. Stitch opening closed. Distribute fullness evenly.



CONTINUE AS FOLLOWS FOR ALL VIEWS

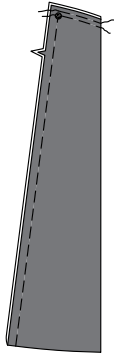
21. To **SET IN SLEEVE**, turn sleeve **RIGHT** side out. Hold bodice **WRONG** side out with armhole toward you. With **RIGHT** sides together, pin upper sleeve to armhole edge with center small dot at shoulder seam, matching underarm seams, notches and remaining small dots. Pull up ease stitches to fit. To distribute fullness evenly, slide fabric along bobbin threads until there are no puckers or tucks on the seam line. Baste. Stitch. Stitch again 1/8" (3mm) from first stitching. Trim seam below notches close to stitching. Press only the seam allowance, shrinking out fullness.



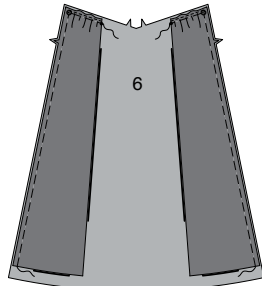
22. Fold **SKIRT FRONT BAND** (7) in half, lengthwise, with **RIGHT** sides together. Stitch 5/8" (1.5cm) from lower edge. **TRIM SEAM.**



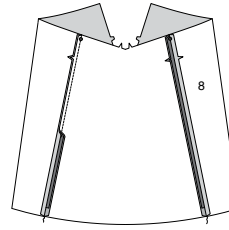
23. Turn skirt front band bringing raw edges together; baste. Press. **GATHER** upper edge from fold to large dot.



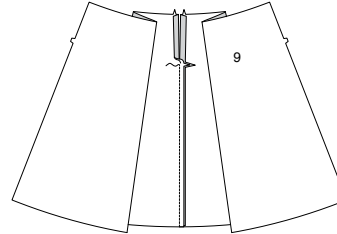
24. On **OUTSIDE**, pin band to **SKIRT FRONT** (6), matching large dots and notches, placing pressed edge of front band at small dot on skirt front, pulling up gathers to fit. Baste upper and notched edges.



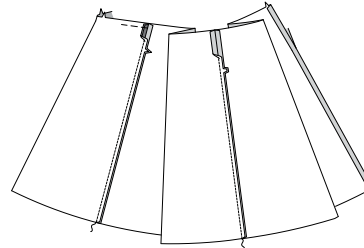
25. With **RIGHT** sides together and raw edges even, pin **SKIRT SIDE FRONT** (8) to skirt front along side front edges, matching large dots and notches. Stitch.



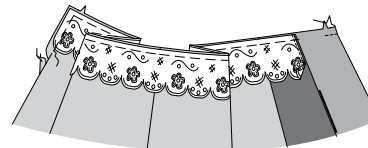
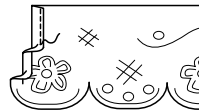
26. Stitch center back edges of **SKIRT BACK** (9) from lower edge to notch, back-stitching at notch to reinforce the seam. Press seams open, pressing under 5/8" (1.5cm) on opening edges.



27. With **RIGHT** sides together and raw edges even, pin skirt side front to skirt back at side edges, matching notches. Stitch.

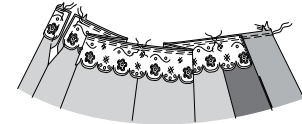


28. **FOR VIEW A** - Cut two pieces of flat scalloped lace trim the length of the skirt seamline from back edge to pressed edge of skirt front band, plus 1/2" (1.3cm). Press under 1/2" (1.3cm) on one end of each piece. To form a narrow hem, turn under raw edge to meet crease; press. Stitch close to inner pressed edge. On **OUTSIDE**, pin straight edge of lace to upper edge of skirt with upper and back edges even and finished front edge ending on skirt front band fold. Baste.

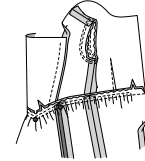


CONTINUE AS FOLLOWS FOR ALL VIEWS

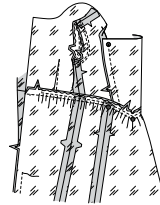
29. **GATHER** upper edge of skirt between the back notches, breaking stitches at seams.



30. Open out back opening edges. With **RIGHT** sides together and raw edges even, pin skirt to bodice, matching seams, large dots, and notches, pulling up gathering stitches to fit. Baste; stitch. Press seam toward bodice.



31. Stitch dress lining sections together in the same manner as bodice, stitching center back edges from lower edge to within 2-1/2" (6.3cm) of notch.



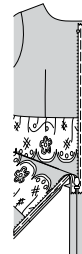
ZIPPER

**NOTE:** Stitch zipper and back edges using an adjustable zipper foot.

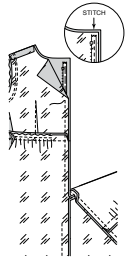
32. Open out back opening edges of dress, and with **RIGHT** sides together, turn down the **LEFT** half of the garment at the notch. Open the zipper. On **OUTSIDE**, pin **RIGHT** side of the zipper face down on the **RIGHT** side of the zipper opening. Have the outer edge of the teeth alongside the crease, the tape within the seam allowance, and the top stop 3/4" (2cm) below upper edge, as shown. Machine-baste along length of tape a scant 1/4" (6mm) from straight edge of zipper tape.



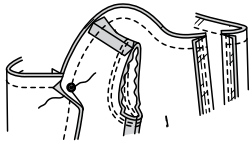
33. With **RIGHT** sides together, turn down the **RIGHT** half of the garment at notch. Machine-baste the remaining half of the zipper to the **LEFT** side of the zipper opening in same manner.



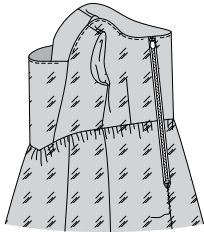
34. Open out back opening edges of garment. With RIGHT sides together, pin lining to back edges of garment, having raw edges even. Stitch lining 3/8" (1cm) from back edges.



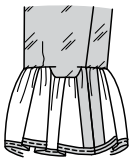
35. Pin upper edges of lining and garment together, turning back edges along center, matching centers front, shoulder seams, and notches, as shown. Stitch upper edge between centers back, breaking stitching at the large dots. **TRIM SEAM.**



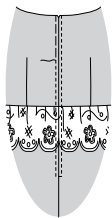
36. **UNDERSTITCH** the lining as far as possible. Turn lining to INSIDE; press. **SLIPSTITCH** remaining back opening in lining closed.



37. Press under 5/8" (1.5cm) on lower edge of sleeve lining. **SLIPSTITCH** in place along seam.

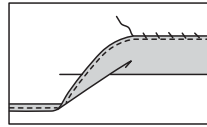


38. On OUTSIDE, bring pressed, back edges together. Hand-baste in place. Stitch 1/4" (6mm) each side of center and 1/4" (6mm) beyond opening. If you prefer, pull up skirt. Tack skirt to skirt lining at waist seam allowance at side front and side seams.

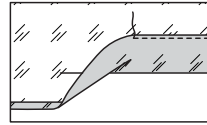


**FINISHING**

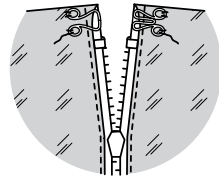
39. To finish raw edge of skirt hem, stitch under 1/4" (6mm), zigzag stitch, OR overlock. Press up hem allowance. **SLIPSTITCH** hem in place.



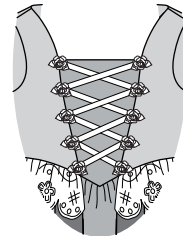
40. Press up 1-1/4" (3.2cm) on lower edge of lining. Turn under raw edge 1/4" (6mm); press. Stitch close to inner pressed edge.



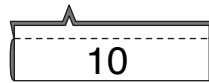
41. On INSIDE, sew hook and eye fastener to neck edge at back.



42. **FOR VIEW A** – Sew ribbon rosettes to bodice front at small dots.



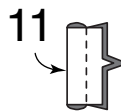
43. **FOR VIEW B** – Fold BOW (10) in half, lengthwise, with RIGHT sides together. Stitch notched edge. **TRIM SEAM.**



44. Turn bow RIGHT side out, bringing seam to center on UNDERSIDE; press. Bring ends to UNDERSIDE, having ends extend 5/8" (1cm) beyond center. Stitch along center line. Trim ends to 1/4" (6mm).



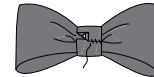
45. Fold KNOT (11) in half, lengthwise, with RIGHT sides together. Stitch notched edges.



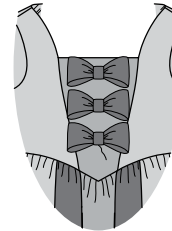
46. Turn knot RIGHT side out, bringing seam to center on UNDERSIDE; press.



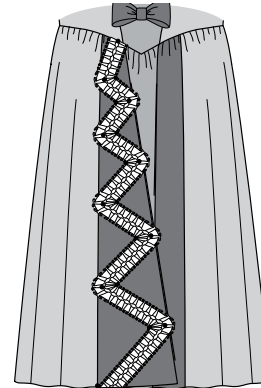
47. Crush bow at center and place knot around center of bow, turning under and lapping one end on UNDERSIDE. **SLIPSTITCH** ends securely catching in UNDERSIDE of bow.



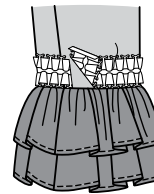
48. On OUTSIDE, sew center of bow to bodice front at small dots, invisibly.



49. Turn under 3/8" (1cm) on one end of pre-pleated trim. Pin end to upper front edge of skirt front band at the small dot. Continue pinning trim to band cascading to lower edge, zigzagging at remaining small dots. Cut trim 3/8" (1cm) at lower edge of band, turn under end, and pin. Hand-sew trim in place. **NOTE:** If the pattern has been altered, respace small dots before placing trim.

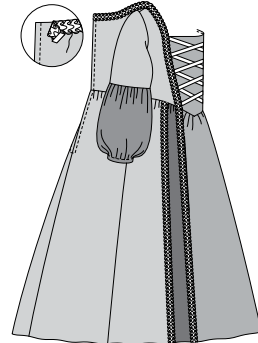


50. Cut a piece of pre-pleated trim the length of the seamline on sleeve, plus 3/4" (2cm). Pin lower edge of trim to sleeve along seamline, turning under and lapping at underarm seam. Hand-sew trim in place, invisibly.



51. **FOR VIEW C** – Turn under 3/8" (1cm) on one end of gimp braid. Pin end to center back with upper edge of braid even with finished neck edge. Pin braid along neck edge, inner edge of bodice side front, and along pressed edge of front band, turning under braid at lower edge. Hand-sew trim in place.

Pin and sew braid to remaining side of garment in the same manner. Turn under 3/8" (1cm) on one end of gimp braid. Pin end and inner edge of braid to skirt side front seam beginning at waist seam, turning under braid at lower edge. Hand-sew trim in place. Pin and sew braid to remaining side of garment in the same manner.



52. Cut a piece of gimp braid the length of the seamline on sleeve, plus 3/4" (2cm). Pin lower edge of trim to sleeve along seamline, turning under and lapping at underarm seam. Hand-sew trim in place.



53. **FOR VIEW D** – Turn under 3/8" (1cm) on one end of 2-1/2" (6.3cm) flat lace. Pin end to side front seam 1-1/4" (3.2cm) above hemline. Continue pinning lace along skirt back sections, turning under lace 3/8" (1cm) at remaining side front seam. Machine-stitch trim in place close to long edges. **SLIPSTITCH** inner edge. Pin and sew two additional pieces of lace to skirt in the same manner, with lower edge of lace 1" (2.5cm) above upper edge of previous one.



54. Cut a piece of 2-1/2" (6.3cm) flat lace the length of the seamline on sleeve, plus 3/4" (2cm). Pin lower edge of trim to sleeve along seamline, turning under and lapping at underarm seam. Stitch close to long edges of lace, or hand-sew trim in place. **SLIPSTITCH** ends together.





# Congrats!

You've completed your sewing adventure

---

**SHARE  
YOUR** LOOK



Post your pattern and tag us  
[@simplicity\\_creative\\_group](#) and [#simplicitypatterns](#)  
for a chance to be featured on our social media.

Look for more PDF patterns at [simplicity.com](https://www.simplicity.com)

Have a question or need help with your sewing project call us at  
1-800-782-0323

**McCall's**  
by **design**<sub>group</sub>

McCall's ©2024 a division of IG Design Group Americas Inc. • Atlanta, GA 30342 USA [www.thedesigngroup.com](http://www.thedesigngroup.com) • All Rights Reserved. [www.mccall.com](http://www.mccall.com) • Made in the U.S.A. Fabriqué aux États-Unis.

To be used for individual private home use only and not for commercial or manufacturing purposes. • A usage privé seulement et non à des fins commerciales ou de production en série. • Para uso privado solamente, no se puede utilizar con propósitos de comercialización o de producción en serie.