

McCall's

M8547



Designed and
printed in USA

Shop all the pattern brands you love @

Simplicity.com



A



B



C

Average
Moins Facile

BUTTON JOINTED BEAR WITH CLOTHES

Suggested Fabrics: A: Fleece/Fleece Types. **Nose Appliqué:** Felt. **B:** Cotton/Cotton Blends. **B also in:** Denim, Lightweight Twill.

Notions: A: Polyfil, pair of ½" (1.3cm) shank buttons or safety lock eyes, four ¾" (2cm) buttons, strong button thread, 7" (18cm) doll needle. **B,C:** 2" (5cm) length of ¾" (2cm) hook and loop tape. **Also for C:** 1¼ yds. (1.1m) of medium rick rack, ¾ yd. (0.8m) of ½" - ¾" (1.3cm - 2cm) eyelet trim, 1½ yds. (1.4m) of 1½" (4cm) ribbon.

Bear A

60" - ½ yd.

Nose Appliqué - 2" x 2" remnant

Overalls B

45" - ¾ yd.

Contrasting Bodice Lining, Pocket, and Cuffs - 15" x 17" remnant

Pinafore C

45" - ¾ yd.

OURS AVEC DES ARTICULATIONS EN BOUTON AVEC VÊTEMENTS

Tissus Conseillés: A: Molleton/Types molleton. **Appliqué de nez:** Feutre. **B:** Coton/Cotonnades. **B aussi en:** Denim, Twill léger.

Mercurie: Rembourrage en polyester, paire de boutons de tige ou yeux avec rondelles de sûreté de 1.3cm, 4 boutons de 2cm, fil de bouton solide, aiguille de poupée de 18cm. **B,C:** 5cm de longueur de ruban auto-grippant de 2cm. **Aussi pour C:** 1.1m de croquet moyen, 0.8m de garniture de broderie anglaise de 1.3cm - 2cm, 1.4m de ruban de 4cm.

Ours A

150cm* - 0.5m

Appliqué de nez: Morceau de feutre de 5cm x 5cm

Salopette B

115cm* - 0.3m

Doublure du corsage, Poche et Poignets contrastés - Morceau de tissu de 38cm x 43cm

Tablier C

115cm* - 0.3m

*with nap **without nap

*avec sens **sans sens

M8547

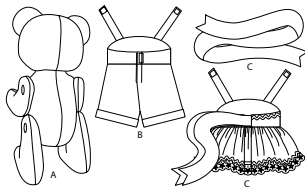
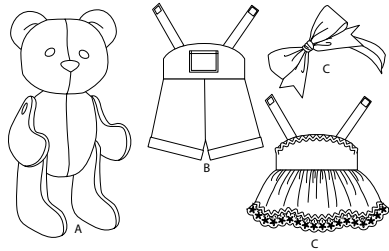
Page 1 of 4

McCall's®

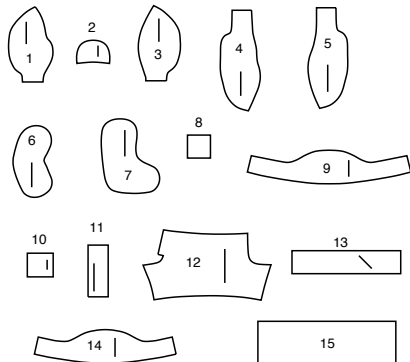
English



1-800-782-0323

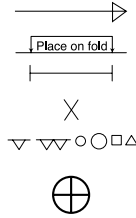


15 PATTERN PIECES



- 1 HEAD FRONT - A
2 EAR - A
3 HEAD BACK - A
4 BODY FRONT - A
5 BODY BACK - A
6 ARM - A
7 LEG - A
8 NOSE APPLIQUE - A
9 BODICE - B
10 POCKET - B
11 STRAP - B,C
12 PANTS - B,C
13 CUFF - B
14 BODICE - C
15 SKIRT - C

PATTERN MARKINGS



GRAINLINE: Place on straight grain of fabric, parallel to selvage or fold.

FOLDLINE: Place line on fold of fabric.

BUTTONHOLE MARKING: Indicates exact length and placement of buttonholes.

BUTTON MARKING: Indicates button placement.

NOTCHES AND SYMBOLS: For matching seams and construction details.

Indicates the Bustline, Waistline, Hip and/or Biceps. Measurements refer to circumference of Finished Garment (Body Measurement + Wearing Ease + Design Ease). Adjust pattern if necessary. The measurement excludes pleats, tucks, darts and seam allowances.

SEAM ALLOWANCE: 5/8" (1.5cm) included unless otherwise indicated, but not printed on tissue.

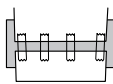
ADJUST IF NECESSARY

Lengthen or Shorten at adjustment lines (==) or where indicated on pattern. If substantial length is added, you may need to purchase additional fabric.

TO SHORTEN: Crease along adjustment line. Make a fold half the amount needed. Tape in place.



TO LENGTHEN: Slash between adjustment lines. Spread amount as needed, keeping edges parallel. Tape over paper.



When Alteration lines are not on tissue, lengthen or shorten at lower edge.

CUTTING AND MARKING

★ Cut other pieces first, allowing enough fabric to cut this piece. Open fabric. For "Cut 1" pieces, cut piece once on single layer of fabric with piece face up on right side of fabric.

Pattern may have cutting lines for several sizes. Select the proper cutting line or pattern pieces for your size.

Before **CUTTING** place all pieces on fabric according to layout. Pin. (Layouts show approximate position of pattern pieces; position may vary according to your pattern size.) Cut **ACCURATELY**, cutting notches outward.

Before removing pattern, **TRANSFER MARKINGS** and lines of construction to Wrong Side of fabric, using the Pin and Chalk Pencil method or Tracing Paper and Dressmaker Wheel. Markings needed on right side of fabric should be thread traced.

NOTE: Broken-line boxes (at bt cl) in layouts represent pieces cut by measurements provided.

SHRINK FABRIC if not labeled pre-shrunk. Press.

CIRCLE LAYOUT for View, Size, Fabric Width.

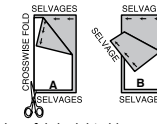
Use **WITH NAP** layout for fabrics with one-way designs, nap, pile or surface shading. Because most knits have surface shading, a with nap layout is used.

For **DOUBLE THICKNESS (WITH FOLD)** - fold fabric with right sides together.

* **DOUBLE THICKNESS (WITHOUT FOLD)** - For

fabrics with nap, fold fabric crosswise, right sides together. Mark as shown. Cut along crosswise fold of fabric (A). Turn upper layer 180° so arrows go in same direction and place over lower layer, right sides together (B).

For **SINGLE THICKNESS** - place fabric right side up. (For Fur Pile fabrics, place pile side down.)



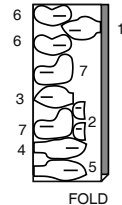
CUTTING LAYOUTS

BEAR A

USE PIECES: 1 2 3 4 5 6 7

60" (15 CM)
WITH NAP

SELVAGES



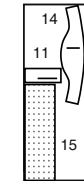
FOLD

PINAFORE C

USE PIECES: 11 14 15

45" (115 CM)
WITH NAP

SELVAGES



FOLD

GLOSSARY

Sewing methods in **BOLD TYPE** have Sewing Tutorial Video available. Scan **QR CODE** to watch videos:

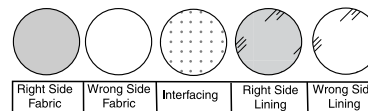
EDGESTITCH - See **how to edgestitch** video.

FINISH - Stitch 1/4" (6mm) from raw edge and finish with one of the following: (1) Pink OR (2) Overcast OR (3) Turn in along stitching and stitch close to fold OR (4) Overlock.

OPTIONAL FOR HEMS: Apply Seam Binding.

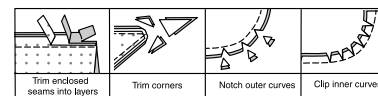
GATHER - See **sewing two row gathers** video.

SLIPSTITCH - Slide needle through a folded edge, then pick up a thread of underneath fabric.

SEWING INFORMATION
FABRIC KEY

SEAM ALLOWANCES

Use 1/4" (6mm) seam allowances unless otherwise indicated.



PIN AND FIT

Pin or baste seams, **RIGHT SIDE TOGETHER**, matching notches. Fit garment before stitching major seams.

PRESS

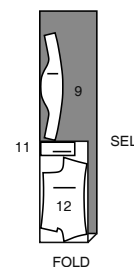
Press seam allowances flat; then open unless otherwise stated. Clip where necessary so they lie flat.

OVERALLS B

USE PIECES: 9 11 12

45" (115 CM)
WITH NAP

SELVAGE

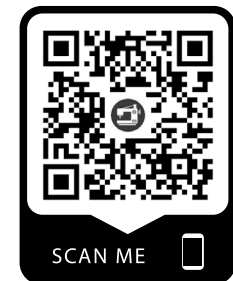


FOLD

CONTRAST B (BODICE,
POCKET, AND CUFF)

CUT ONE EACH OF PIECES 9 AND 10 AND TWO OF
PIECE 13 FROM REMNANT

SEWING TUTORIALS

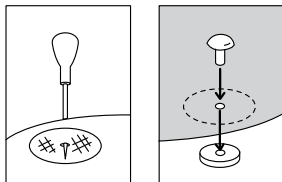


Build your skills viewing short, easy-to-follow videos at
simplicity.com/sewingtutorials

GENERAL DIRECTIONS FOR SAFETY EYES

A. SAFETY EYES - Before stitching seams, reinforce eyes or nose area so that the plastic eyes and nose don't pull through the fabric, cut 1" (2.5cm) circles from remnants of fusible interfacing. Fuse circles to **WRONG** side of head underneath small dots for eyes or nose, following manufacturer's directions.

To attach each eye or nose, using a sharp pointed object or an awl, poke a hole at small dots. Insert the eye or nose shank through the opening from **OUTSIDE** and on **INSIDE** secure in place with washer making sure it is on securely.



GENERAL DIRECTIONS FOR STUFFING

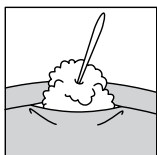
B. STUFF - Pull fiberfill apart and fluff it before you use it. Break apart the lumps and thick spots. This will help to create a smoother looking project.

Use pieces about the size of a tennis ball. Pack into place using the end of a long handled wooden spoon or chop-stick.

Use small pieces and pack into place using the end of a crochet hook or chop-stick.

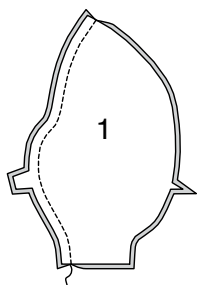
Pack firmly in place each time stuffing is added. Use both hands to mold and shape, being careful not to over stuff or make lopsided.

NOTE: All seams are 1/4" (6mm) unless otherwise indicated.



BEAR A

1. With **RIGHT** sides together, stitch **HEAD FRONT** (1) sections together along center front seam.

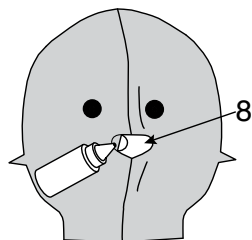


2. Apply **SAFETY EYES** to head front. See **GENERAL DIRECTIONS FOR SAFETY EYES**.

NOTE: Shank buttons can also be used, if you prefer.

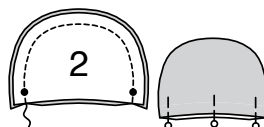
Glue **NOSE APPLIQUE** (8) to head front, centering edges along placement lines.

NOTE: EDGESTITCH nose applique in place, if you prefer.

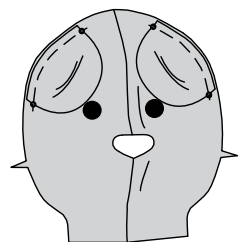


3. With **RIGHT** sides together, stitch **EAR** (2) sections together, having raw edges even, matching small dots.

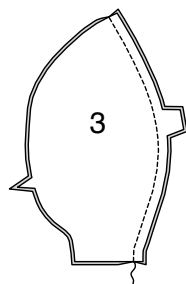
Turn ear **RIGHT** side out. Press. Pin raw edges together.



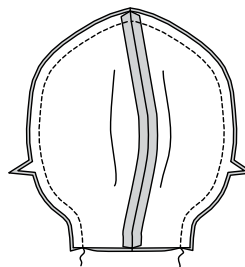
4. On **OUTSIDE**, pin ear to each side of head, matching small dots. Baste.



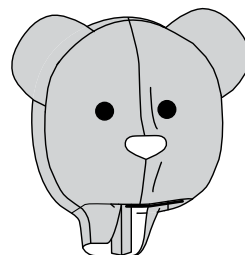
5. With **RIGHT** sides together, stitch **HEAD BACK** (2) sections together along center back seam.



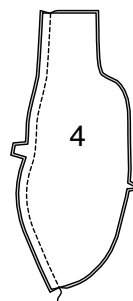
6. With **RIGHT** sides together, pin head front to head back matching centers and having raw edges even. Stitch outer edge, leaving lower edge open.



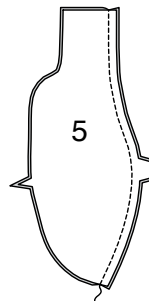
7. Turn head **RIGHT** side out. Press. Press under lower edge of head along foldline. **STUFF** head, leaving space to insert neck. See **GENERAL DIRECTIONS FOR STUFFING**.



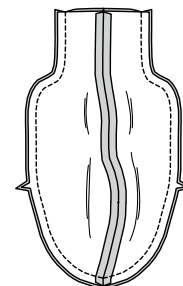
8. With **RIGHT** sides together, stitch **BODY FRONT** (4) sections together along center front seam.



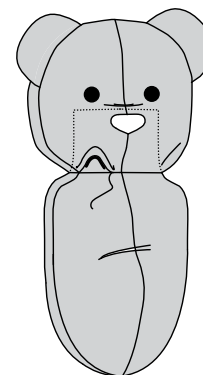
9. Stitch **BODY BACK** (5) sections together along center back seam.



10. With **RIGHT** sides together, pin body front to body back matching centers and having raw edges even. Stitch outer edge, leaving neck edge open.



11. Turn body **RIGHT** side out. Press. **STUFF** body. On **OUTSIDE**, pin pressed edge of head to neck edge, placing pressed edge along placement lines. Invisibly **SLIPSTITCH** head in place.



12. Construct two arms as follows:

With **RIGHT** sides together, pin **ARM** (6) sections together, having raw edges even. Stitch, leaving an opening large enough for turning.

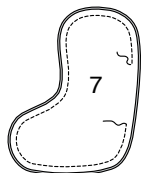


13. Turn arm **RIGHT** side out, press. **STUFF. SLIPSTITCH** opening closed.

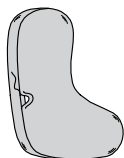


14. Construct two legs as follows:

With RIGHT sides together, pin LEG (7) sections together, having raw edges even. Stitch, leaving an opening large enough for turning.



15. Turn leg RIGHT side out, press. **STUFF. SLIPSTITCH** opening closed.

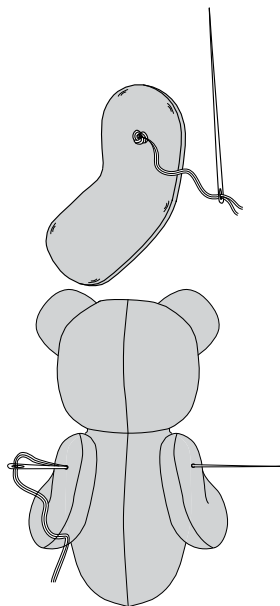
**16. Attach arms and legs as follows:**

Using strong thread, secure the thread with a knot on the INSIDE of one of the arms/legs at small dot.

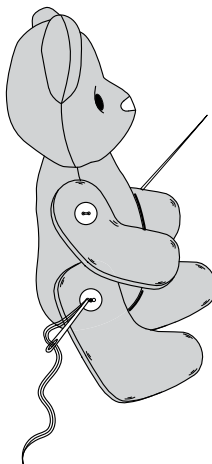
Pin arms to body matching small dots, using the doll needle to line up arms/legs.

Bring needle through arm on one side and out arm on the other side.

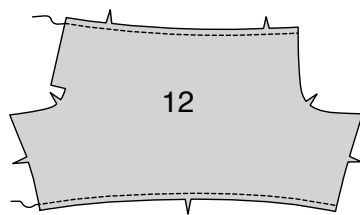
Sew back and forth a few times, finishing off with a knot on the INSIDE of the arm/leg, so that it is hidden between the arm/leg and body.



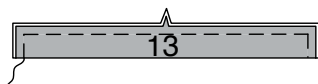
17. To attach buttons, pin buttons to arms, centering over small dots. Using strong thread that matches the button color, hand-sew through the body and arms/legs in same manner as above step, going through holes of both buttons on each side. Knot end of thread, so that it is hidden between the arm/leg and body.

**OVERALLS B**

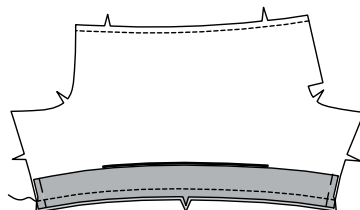
1. Machine-stitch 1/8" (3mm) from upper and lower edge of PANTS (12) sections.



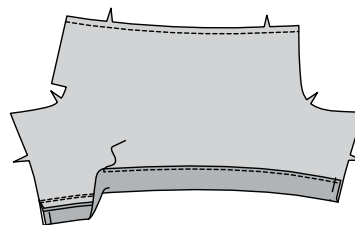
2. Fold CUFF (13) along foldline, with WRONG sides together. Baste raw edges together.



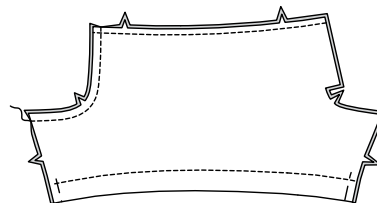
3. On INSIDE, pin cuff to lower edge of pants, matching notches, having raw edges even. Clip to machine-stitching if necessary. Baste. Stitch. Trim seam.



4. Turn cuff to OUTSIDE along seam, press. **EDGESTITCH** pressed edge of cuff in place. Baste raw edges in place.

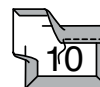


5. Stitch pants sections together at center front seam.



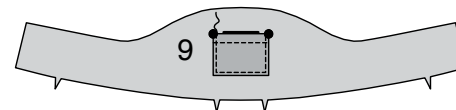
6. Press under side and lower edges of POCKET (10).

Fold upper edge of pocket to INSIDE, along foldline, pressing under 1/4" (6mm) on raw edge. Stitch along inner pressed edge.

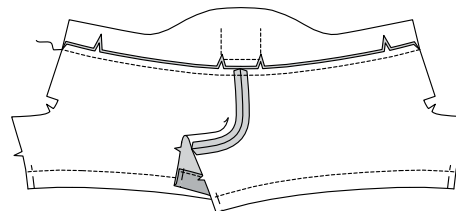


7. On OUTSIDE, pin pocket to BODICE (9) fabric section, matching large dots, placing pressed edges along placement lines. **EDGESTITCH** side and lower edges of pocket in place.

OPTIONAL: TOPSTITCH pocket if you prefer.



8. With RIGHT sides together, pin bodice to upper edge of pants having back edges even, matching notches. Stitch. Press seam up, pressing bodice out.

**9. Construct two straps as follows:**

Fold STRAP (11) in half lengthwise, matching small dots. Stitch outer edge leaving end with small and large dots open.

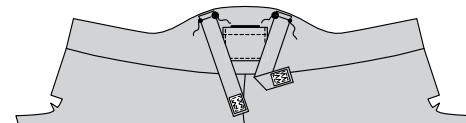
Turn strap RIGHT side out. Press. Baste raw edges together.

Cut a piece of hook and loop tape measuring 1/2" (1.3cm) long. Pin tape to finished edge of strap centering along upper ends, as shown. **EDGESTITCH** tape in place.



10. On OUTSIDE, pin straps to upper edge of bodice, matching small and large dots, having strap with hook (rough) half of tape facing down, and strap with loop (soft) half of tape facing up, as shown. Baste.

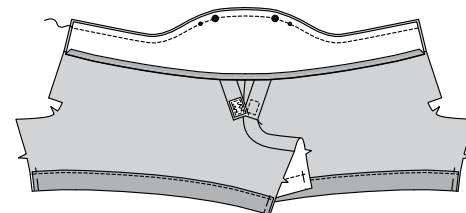
TIP: pin free ends of straps out of the way, when stitching remaining seams.



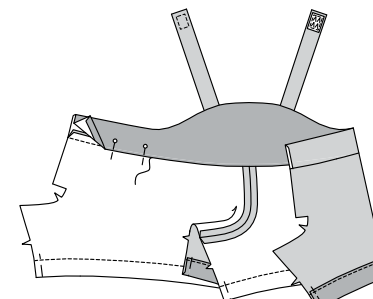
11. Press under 1/4" (6mm) on lower edge of bodice contrast section, easing in fullness if necessary.



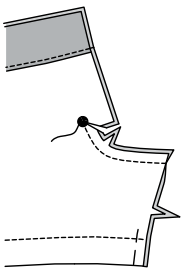
12. With RIGHT sides together, pin contrast bodice to bodice, matching small and large dots, having raw edges even. Stitch upper edge. Trim seam.



13. Turn bodice facing to INSIDE. Press. Pin pressed edge of facing over seam. **SLIPSTITCH** in place.



14. With RIGHT sides together, stitch center back seam of pants, ending at large dot. Clip to large dot, being careful not to clip through stitching.

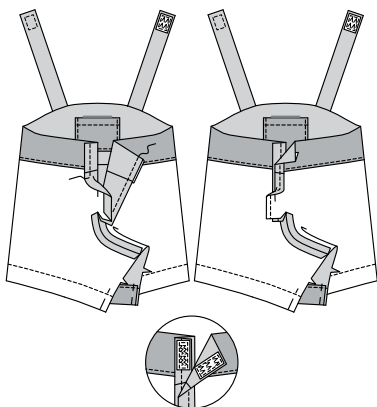


15. Press under 1/4" (6mm) on RIGHT back opening edges of overalls.

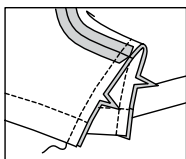
Press RIGHT back opening edge to INSIDE, along fold line. Press. Stitch RIGHT back opening edge 1/4" (6mm) from pressed edge, as shown.

FINISH LEFT back opening edge. Press under 1/2" (1.3cm) on LEFT back opening edge.

Cut a piece of hook and loop tape measuring 1/2" (1.3cm) long. On INSIDE, pin hook (rough) half of tape to upper edge of back bodice, as shown. On OUTSIDE, pin loop (soft) half of tape to RIGHT back opening edge, as shown. **EDGE STITCH** tape in place.



16. With RIGHT sides together, stitch front to back at inner leg seams.



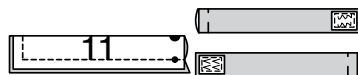
PINAFORE C

1. Construct two straps as follows:

Fold STRAP (11) in half lengthwise, matching small dots. Stitch outer edge leaving end with small and large dots open.

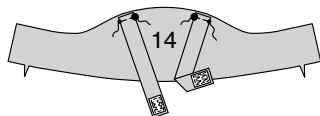
Turn strap RIGHT side out. Press. Baste raw edges together.

Cut a piece of hook and loop tape measuring 1/2" (1.3cm) long. Pin tape to finished edge of strap centering along upper ends, as shown. **EDGE STITCH** tape in place.



2. On OUTSIDE, pin straps to upper edge of BODICE (14), matching small and large dots, having strap with hook (rough) half of tape facing down, and strap with loop (soft) half of tape facing up, as shown. Baste.

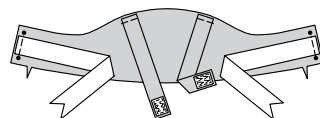
TIP: pin free ends of straps out of the way, when stitching remaining seams.



3. Cut two pieces of ribbon measuring 11" (28cm) long. Cut ends of ribbon to form two points, as shown.

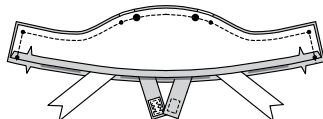
On OUTSIDE, pin straight end of ribbon to side edges of bodice, centering between small dots. Baste.

TIP: Pin free ends of ribbon out of the way, when stitching remaining seams.



4. Press under 1/4" (6mm) on lower edge of bodice facing.

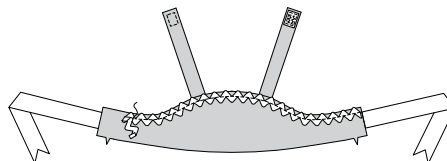
With RIGHT sides together, pin bodice sections together, matching small and large dots, having raw edges even. Stitch upper and side edges, leaving lower edge open. Trim seam.



5. Turn bodice RIGHT side out. Press.

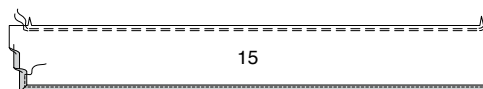
Cut a piece of rick-rac trim the width of bodice plus 1/2" (1.3cm).

On OUTSIDE, pin trim to upper edge of bodice, turning under 1/4" (6mm) on ends. Stitch along center of trim.

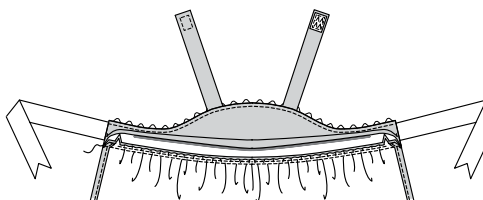


6. Press up 1/2" (1.3cm) hem on lower and back edges of SKIRT (15). Press under 1/4" (6mm) on raw edge. Stitch close to inner pressed edge.

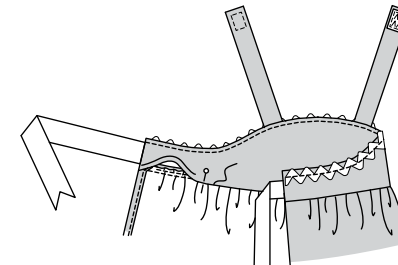
GATHER upper edge of skirt between notches.



7. With RIGHT sides together, pin skirt to lower edge of bodice, matching centers and small dots. Adjust gathering stitches to fit. Baste. Stitch. Stitch again in seam allowance. Press seam up.

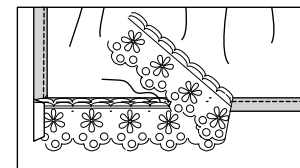


8. Pin pressed edge of bodice over seam, **SLIPSTITCH** in place.



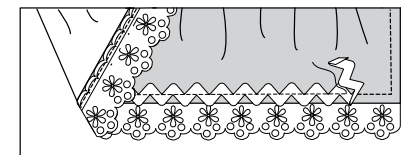
9. Cut a piece of eyelet trim the length of lower edge of skirt plus 1/2" (1.3cm).

On INSIDE, pin eyelet trim to lower edge of skirt, just covering hem, as shown. Turn under ends of trim. Baste trim in place.



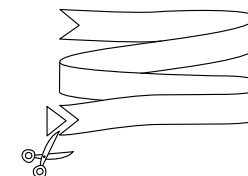
10. Cut a piece of ric-rac trim the length of lower edge of skirt plus 1/2" (1.3cm).

On OUTSIDE, pin trim to lower edge of skirt, having lower edge of trim, slightly extended beyond finished edge of skirt. Turn under ends of trim. Stitch along center of trim, catching in eyelet trim on INSIDE.



HEADBAND C

1. Cut a piece of ribbon 30" (76cm) long. Cut ends of ribbon to form two points, as shown. Wrap ribbon around head of bear and tie into a bow.





Congrats!

You've completed your sewing adventure

SHARE YOUR LOOK



Post your pattern and tag us
[@simplicity_creative_group](#) and [#simplicitypatterns](#)
for a chance to be featured on our social media.

Look for more PDF patterns at [simplicity.com](https://www.simplicity.com)

Have a question or need help with your sewing project call us at
1-800-782-0323

McCall's
by **design**_{group}

McCall's ©2024 a division of IG Design Group Americas Inc. • Atlanta, GA 30342 USA www.thedesigngroup.com • All Rights Reserved. www.mccall.com • Made in the U.S.A. Fabriqué aux États-Unis.

To be used for individual private home use only and not for commercial or manufacturing purposes. • A usage privé seulement et non à des fins commerciales ou de production en série. • Para uso privado solamente, no se puede utilizar con propósitos de comercialización o de producción en serie.