

**McCall's**

M8542



VINTAGE 70's

Designed and printed in USA

Average

**MISSES' JACKET, SKIRT AND PANTS**

**Suggested Fabrics:** Challis, Cotton Blends, Cotton Broadcloth, Lightweight Corduroy, Lightweight Synthetic Gabardine, Lightweight Wool, Velveteen, Wool Jersey, Wool-Like Blends. **Interfacing:** Lightweight Fusible.

**Notions: All Views:** Seam binding (opt.), single or fold-over stretch lace (opt.). **Jacket:** Two ½" (1.3cm) buttons. **Skirts or Pants:** 7" (18cm) zipper, two hooks and eyes.

Sizes	6	8	10	12	14	16
European	32	34	36	38	40	42

**BODY MEASUREMENTS: Select pattern size based on body measurements**

	30½	31½	32½	34	36	38	Ins.
<b>Bust</b>	23	24	25	26½	28	30	"
<b>Waist</b>	32½	33½	34½	36	38	40	"
<b>Hip-9" below waist</b>	15½	15¾	16	16¼	16½	16¾	"

**View A, B or D Jacket**

45**	2¾	2¾	2¾	2¾	2¾	2¾	Yds.
60**	1¾	1¾	2	2	2	2	"

**Interfacing** 20" - 1 yd.

**View A, B, C Skirt, D Pants - Interfacing**

20" - 1 yd.

<b>View A Skirt</b>	45**	5%	5%	5%	5%	5%	5%	Yds.
60**	3¾	3¾	3¾	3¾	3¾	3¾	3¾	"

<b>View B Skirt</b>	45**	2%	2%	2%	2%	2%	2%	Yds.
60**	1¾	1¾	1¾	1¾	2	2	2	"

<b>View C Skirt</b>	45**	2%	2%	2%	2%	2%	2%	Yds.
60**	1¾	1¾	1¾	1¾	1¾	1¾	1¾	"

<b>View D Pants</b>	45**	3¾	4	4	4	4	4¾	Yds.
60**	2¾	2¾	3	3¾	3¾	3¾	3¾	"

**NOTE:** Please refer to the sewing instructions for **FINISHED GARMENT MEASUREMENTS**.

\*with nap \*\*without nap

Moins Facile

**VESTE, JUPE ET PANTALON POUR JEUNES FEMMES**

**Tissus Conseillés:** Challis, Cottonnades, Broadcloth de coton, Velours côtelé léger, Gabardine synthétique léger, Laine léger, Velours de coton, Jersey de Laine, Mélanges semblables à de la laine. **Entoilage:** Thermocollant léger.

**Mercerie: Toutes les modèles:** Extra-fort (facultatif), dentelle extensible simple ou à replier (facultatif). **Veste:** 2 boutons de 1.3cm. **Jupes ou pantalon:** fermeture à glissière de 18cm, 2 agrafes.

Tailles	6	8	10	12	14	16
Françaises	34	36	38	40	42	44
Européen	32	34	36	38	40	42

**MESURES DU CORPS: Choisissez la taille du patron basée sur les mesures du corps**

	78	80	83	87	92	97	cm
<b>Poitrine</b>	58	61	64	67	71	76	"
<b>Taille</b>	83	85	88	92	97	102	cm
<b>Hanches (23cm au-dessous de la taille)</b>	39.5	40	40.5	41.5	42	42.5	"

**Dos du cou à la taille**

115cm*	2.5	2.5	2.5	2.5	2.5	2.5	m
150cm*	1.7	1.7	1.8	1.8	1.8	1.8	"

**Modèle A, B ou D Veste**

51cm	-0.9m
------	-------

**Entoilage**

**Modèle A, B, C Jupe D Pantalon - Entoilage**

115cm*	4.7	4.7	4.7	4.7	4.7	4.7	m
150cm*	3.5	3.5	3.5	3.5	3.5	3.5	"

<b>Modèle A Jupe</b>	115cm*	2.4	2.4	2.4	2.4	2.4	2.4	m
150cm*	1.6	1.7	1.7	1.7	1.8	1.8	1.8	"

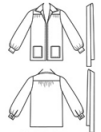
<b>Modèle B Jupe</b>	115cm*	2.2	2.2	2.2	2.2	2.2	2.2	m
150cm*	1.5	1.5	1.5	1.6	1.6	1.6	1.6	"

<b>Modèle C Jupe</b>	115cm*	3.5	3.5	3.7	3.7	3.7	3.8	m
150cm*	2.5	2.6	2.7	2.7	2.9	3.0	"	

<b>Modèle D Pantalon</b>	115cm*	2.5 <th>2.6 <th>2.7 <th>2.7 <th>2.9 <th>3.0</th> <th>m</th> </th></th></th></th>	2.6 <th>2.7 <th>2.7 <th>2.9 <th>3.0</th> <th>m</th> </th></th></th>	2.7 <th>2.7 <th>2.9 <th>3.0</th> <th>m</th> </th></th>	2.7 <th>2.9 <th>3.0</th> <th>m</th> </th>	2.9 <th>3.0</th> <th>m</th>	3.0	m
150cm*	2.5	2.6	2.7	2.7	2.9	3.0	"	

**NOTE:** S'il vous plaît, reportez-vous au instructions de couture pour les **MESURES DU VÊTEMENTS FINI**.

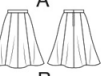
\*avec sens \*\*sans sens



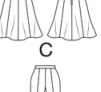
A, B, D



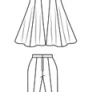
A



B



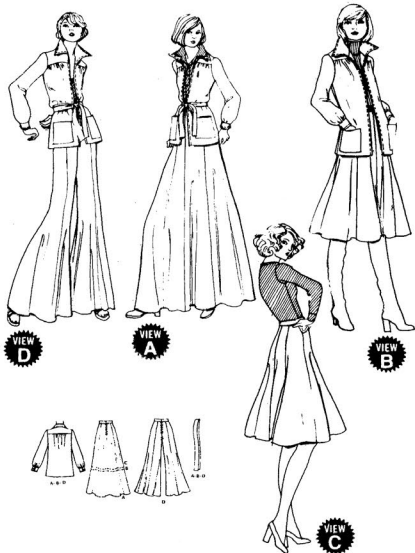
C



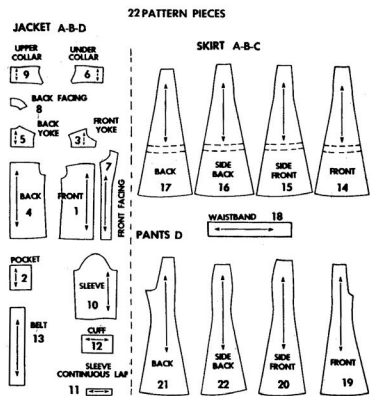
D

4595

CAREFREE PATTERNS FROM **McCALL'S**



**SELECT PATTERN PIECES FOR VIEW YOU HAVE CHOSEN**



VIEW A OR B - USE PIECES 1 thru 18  
 VIEW C - USE PIECES 14 thru 18  
 VIEW D - USE PIECES 1 thru 13, 18 thru 22

**HOW TO USE A McCALL'S CAREFREE PATTERN**

**STUDY THE PATTERN**

Select pieces for VIEW you have chosen.

Check identification markings - Number, Size, Name and View - on each piece.

Understand the pattern markings.

Grainline: Place line on straight grain of fabric, an even distance from selvage.

Place on fold: Fold Line: Place on fold of fabric.

Cutting Line: For cutting.

Seam Line: For sewing.

Seam Allowance: Distance between cutting and seam lines is usually 5/8" (1.5cm).

Notches and Circles: For matching pattern pieces.

**ADJUST IF NECESSARY**

A pattern is made to fit specific body measurements, with extra ease for comfort and style.

Compare your body measurements to those listed on pattern envelope. Adjust pieces before placing them on fabric. Back waist and finished garment lengths can be adjusted using McCall's Easy-Rule Guide.\*

To Shorten: Crease pattern on Easy-Rule Guide. Fold pleat necessary amount. Tape in place.

To Lengthen: Cut pattern on dotted lines of Easy-Rule Guide. Spread necessary amount. Tape over paper.

**NOTE THE MEASUREMENTS**

Abbreviations "mm" and "cm" are metric equivalent for inches. They are provided for the convenience of those using the metric system of measurement.

1/8" (3mm)    1/2" (1.3cm)    1" (2.5cm)  
 1/4" (6mm)    5/8" (1.5cm)    1 1/4" (3.1cm)  
 3/8" (1cm)    3/4" (2cm)    2" (5cm)

**LAYOUT FOR CUTTING**

Shrink fabric not labeled pre-shrunk. Press.

Circle layout for View, Size, Fabric Width.

- Use With Nap layout for fabrics with one-way designs, nap, pile or surface shading.
- Use Without Nap layout for other fabrics.

Arrange fabric for cutting as shown on layout:

- Double Thickness - fold fabric with Right Sides Together.
- Single Thickness - place fabric Right Side Up.

Before cutting, place all pieces on fabric according to layout. Overlap margins. Pin.

**CUTTING AND MARKING**

Cut accurately through fabric and pattern on cutting line. Cut notches outward.

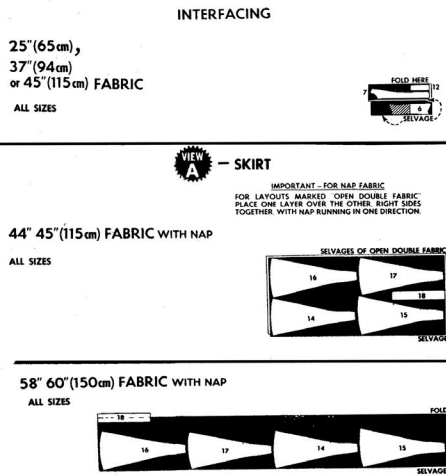
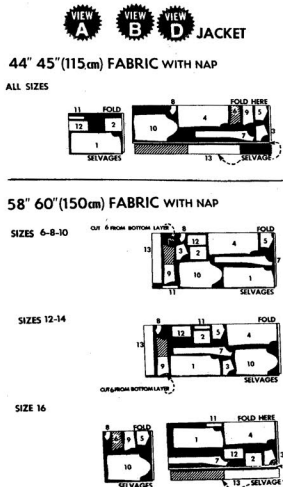
Before removing pattern, transfer markings to Wrong Side of fabric. One way which may be used quickly and safely on the widest range of fabrics is the Pin and Chalk Pencil method.\*

Questions about sewing? Write Meg Carter, The McCall Pattern Company, 230 Park Avenue, New York, New York 10017.

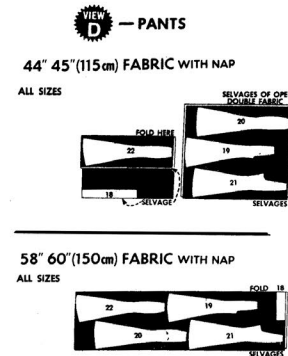
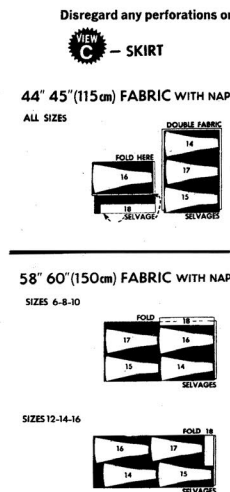
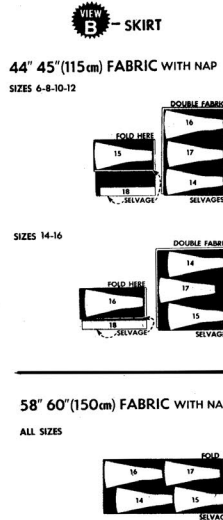
\*See McCall's Sewing Book for other adjustments and marking information.

- Black area denotes fabric.
- ▨ Pattern pieces to be placed with printed side down.
- Pattern pieces to be placed with printed side up.
- Pattern pieces to be placed with printed side up.
- Pattern pieces to be cut a second time.

Metric measurements are given in parenthesis.



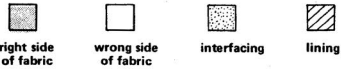
**CUTTING LAYOUTS**



Disregard any perforations on pattern pieces.

**SEWING DIRECTIONS**

READ directions for View you are making before beginning to sew. STUDY the drawings carefully.



SEW exactly on seam lines indicated on pattern. To make a seam:

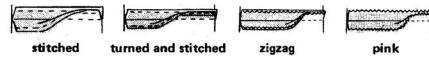
PIN two pieces of fabric, Right Sides Together matching notches and seam lines. BASTE, if desired, by hand or machine.

FIT garment before stitching major seams.

STITCH in direction of arrows. Use 5/8" (1.5cm) seam allowance unless otherwise indicated.

PRESS seams open unless otherwise noted.

FINISH raw edges of seams, facings and hems to prevent raveling:



**SEWING TERMS**

GRADE: Cut seam allowances to graduated widths and interfacing close to stitching.

UNDERSTITCHING: Row of machine stitching thru facing and seam allowances close to seam line. Prevents facing from rolling to outside.

INVISIBLE STITCH: Used for hemming. Turn hem back. Pick up a thread of garment; then pick up a thread of hem diagonally above.

NOTE: If FUSIBLE interfacing is used, follow manufacturer's directions.

**JACKET** VIEW A VIEW B VIEW D

**1. FRONT**

**POCKETS**

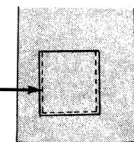
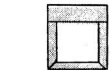
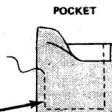
Finish upper edge of pocket: see SEWING DIRECTIONS.

Turn down upper edge of pocket to OUTSIDE on hemline.

Starting at hem fold, stitch around raw edges on seam line. Cut upper corners diagonally.

Turn hem to INSIDE, turning under seam allowance below hem along line of stitching, folding corners. Press.

Pin pocket to position on each front, RIGHT SIDES UP. Stitch close to sides and lower edge.



**1. CONTINUED**

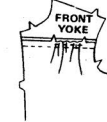
**GATHERS**

To gather front, machine-baste along lines indicated on pattern.



**ATTACH FRONT YOKE**

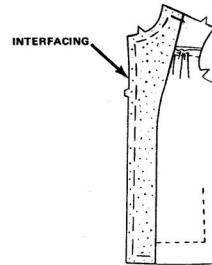
Pin fronts to front yokes, RIGHT SIDES TOGETHER, matching notches. Draw up and adjust gathers in fronts to fit. Baste. Stitch. Press seam allowances toward yokes.



**INTERFACING**

Cut off neck and shoulder notches on interfacing.

Hand-baste interfacing to WRONG SIDE of fronts.



**2. BACK**

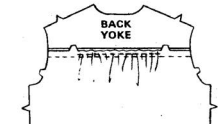
**GATHERS**

To gather back, machine-baste along lines indicated on pattern.



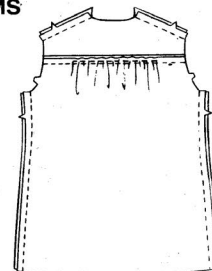
**ATTACH BACK YOKE**

Pin back to back yoke, RIGHT SIDES TOGETHER, matching notches and center backs. Draw up and adjust gathers in back to fit. Baste. Stitch. Press seam allowances toward yoke.



**3. SHOULDER AND SIDE SEAMS**

Stitch back to fronts at shoulders and sides.



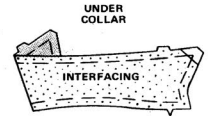
Cut interfacing close to stitching at shoulders.



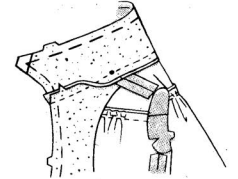
**4. COLLAR AND FACING**

**UNDER COLLAR**

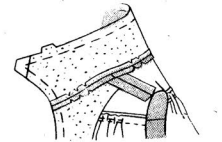
Pin interfacing to WRONG SIDE of under collar. Cut corners of interfacing diagonally to 1/4" (6mm) IN-SIDE the seam line as illustrated. Hand-baste.



Stitch under collar to neck edge of jacket, RIGHT SIDES TOGETHER, matching notches and having LARGE collar circles at shoulder seams.



Cut seam allowances to 3/8" (1cm) from stitching. Cut interfacing close to stitching. Clip curves.

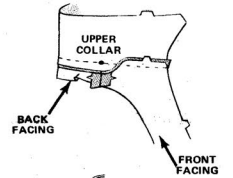


**UPPER COLLAR AND FACING**

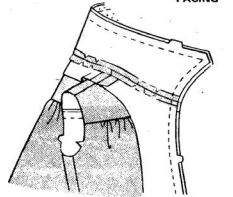
Stitch back facing to front facings at shoulders.

Finish long UN-NOTCHED edge of facing: see SEWING DIRECTIONS.

Stitch upper collar to neck edge of facing, RIGHT SIDES TOGETHER, matching notches and having LARGE collar circles at shoulder seams.



Cut seam allowances to 3/8" (1cm) from stitching. Clip curves.



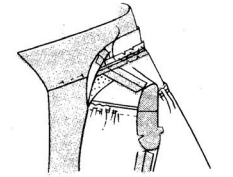
Pin front facings and upper collar to fronts and under collar, RIGHT SIDES TOGETHER, matching notches and neck seams. Stitch.

GRADE seam allowances, Cut corners diagonally. Clip curves.

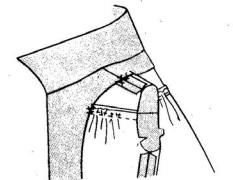
Turn collar and facing RIGHT SIDE OUT. Press.

If necessary, cut interfacing even with inner edge of facing.

On OUTSIDE of upper collar, pin neck seams together. Lift facing and sew neck seam allowances together.



Catch-stitch facing to seams.



CONTINUED ON PART 2

### 5. SLEEVES

#### SLEEVE PREPARATION

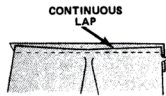
To ease sleeve cap, stitch on seam line with a regular stitch from underarm to notch and machine-basting between notches.



To reinforce sleeve opening, machine-stitch on dotted seam line, taking one stitch across top of opening. Slash on solid line.



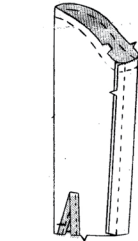
With RIGHT SIDE of continuous lap to WRONG SIDE of sleeve, stitch one edge of continuous lap to edges of opening, taking up a 1/4" (6mm) seam allowance on lap, and seam allowance on sleeve as indicated on pattern, stitching over reinforcement stitching.



Turn under 1/4" (6mm) on free edge of lap and stitch over seam on OUT-SIDE.

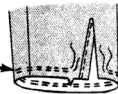


Turn front section of lap to INSIDE and press. Baste to sleeve at lower edge.

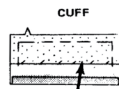


Stitch sleeve seam.

To gather lower edge of sleeve, machine-baste along lines indicated on pattern.



Turn under 5/8" (1.5cm) on long UN-NOTCHED edge of cuff. Press.

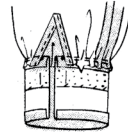


Baste interfacing to NOTCHED edge of cuff on WRONG SIDE. Sew loosely at fold line.

INTERFACING

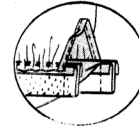
### 5. CONTINUED

Pin cuff to lower edge of sleeve, RIGHT SIDES TOGETHER, matching notches and having circles at opening. Draw up and adjust gathers to fit. Baste. Stitch.



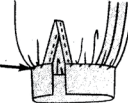
GRADE seam allowances. Press seam allowances toward cuff.

Fold cuff on fold line, RIGHT SIDES TOGETHER. Stitch ends.

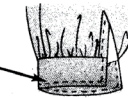


GRADE seam allowances. Cut corners diagonally.

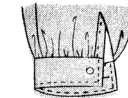
Turn cuff RIGHT SIDE OUT. Hem free edge over seam. Press.



Top-stitch 1/4" (6mm) from outer edges of cuff as illustrated.



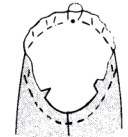
Make worked buttonhole in cuff.



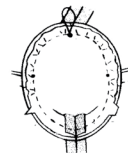
Sew button to position on cuff.

### SETTING SLEEVE INTO ARMHOLE

Gently pull up bobbin thread at LARGE circle to ease in fullness between notches.



Pin sleeve into armhole, RIGHT SIDES TOGETHER. Match underarm seams, SMALL circles and LARGE sleeve circle to shoulder seam.

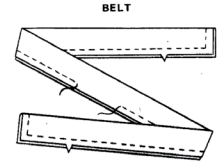


Baste adjusting ease evenly. Stitch. Turn seam allowances toward sleeve.

### 6. FINISHING

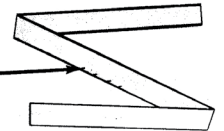
#### BELT

Fold belt on fold line, RIGHT SIDES TOGETHER. Stitch seam edges, taking up a 1/2" (1.3cm) seam allowance and leaving an opening for turning.



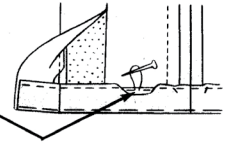
GRADE seam allowances. Cut corners diagonally.

Turn belt RIGHT SIDE OUT. Turn in and slipstitch opening edges together. Press.



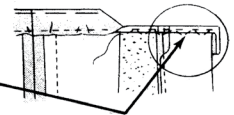
#### HEM

Turn up lower edge of jacket on hemline, opening out front facings. Hand-baste along fold.



Machine-baste 1/4" (6mm) from raw edge. Pull up bobbin thread to ease in fullness. Press.

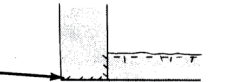
Finish raw edge of hem: see SEWING DIRECTIONS.



Sew with INVISIBLE STITCH: see SEWING TERMS.

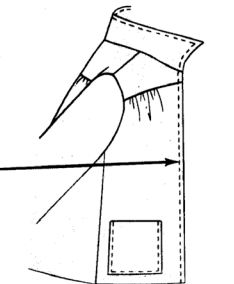
OR, finish with seam binding, single or foldover stretch lace.

Turn front facings to INSIDE again. Sew inner edge of front facings to hem and lower edges together.



#### TOP-STITCHING

Top-stitch 1/4" (6mm) from front and collar edges as illustrated.

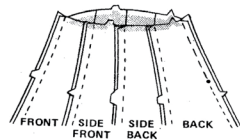


# TANGO SKIRT



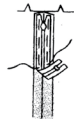
## 1. SEAMS

Stitch center front seam.  
 Stitch side fronts to front.  
 Stitch side backs to side fronts.  
 Stitch backs to side backs.  
 Clip seam allowances as necessary to press seams open.  
 Stitch center back seam from lower edge to circle. Machine-baste opening edges together above circle.

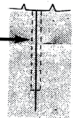


## 2. ZIPPER

Press open basted seam above circle.  
 On **INSIDE**, center zipper face down over seam with pull-tab 1" (2.5cm) down from upper edge. Hand-baste.



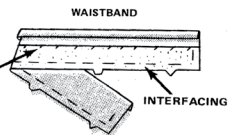
On **OUTSIDE**, stitch 1/4" (6mm) from seam with a zipper foot. Remove basting.



## 3. WAISTBAND

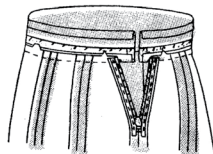
Turn under 5/8" (1.5cm) on long **UN-NOTCHED** edge of waistband. Press.

Baste interfacing to **NOTCHED** edge of waistband on **WRONG SIDE**. Sew loosely at fold line.



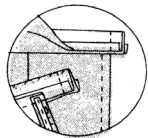
Pin waistband to skirt, **RIGHT SIDES TOGETHER**, matching notches, center fronts and circles to back opening edges. Stitch.

**GRADE** seam allowances: see **SEWING TERMS**. Press seam allowances toward waistband.



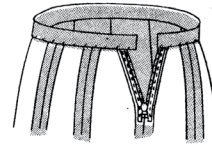
Fold waistband on fold line, **RIGHT SIDES TOGETHER**. Stitch ends.

**GRADE** seam allowances. Cut corners diagonally.

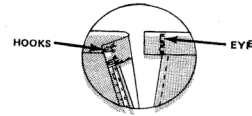


## 3. CONTINUED

Turn waistband **RIGHT SIDE OUT**. Hem free edge over seam. Press.



Sew two hooks and eyes to waistband as illustrated.



## 4. HEM

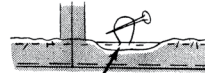
Allow skirt to hang before marking hemline.

Try on skirt. Mark hemline.

Turn up hem along marking. Hand-baste along fold.

Trim hem to an even width.

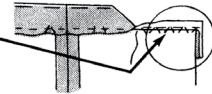
Machine-baste 1/4" (6mm) from raw edge. Pull up bobbin thread to ease in fullness. Press.



Finish raw edge: see **SEWING DIRECTIONS**.

Sew with **INVISIBLE STITCH**: see **SEWING TERMS**.

OR, finish with seam binding, single or foldover stretch lace.

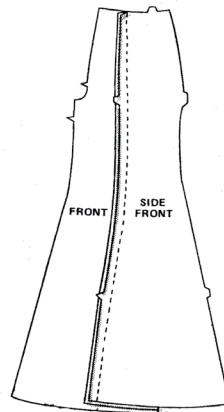


# PANTS



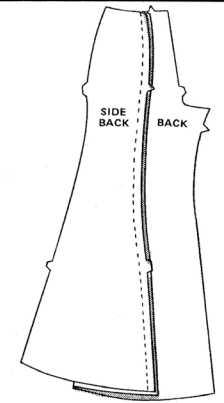
## 1. SEAMS

Stitch side fronts to fronts.



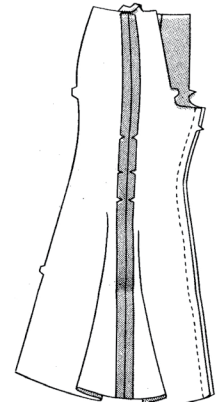
## 1. CONTINUED

Stitch side backs to backs.



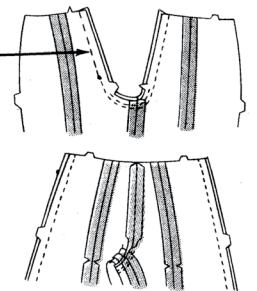
Stitch backs to fronts at inside leg edges.

Clip seam allowances as necessary to press seams open.



Stitch center seam to circle, matching inside leg seams. Machine-baste opening edges together above circle.

To reinforce curve, stitch again just inside previous stitching between the notches. Cut seam allowances between notches to 3/8" (1cm) from stitching.



Stitch front to back at sides. Clip seam allowances as necessary to press seams open.

## 2. ZIPPER

## 3. WAISTBAND

## 4. HEMS

Same as described for SKIRT A, B or C — 2. ZIPPER, 2. WAISTBAND, 4. HEM.



# Congrats!

You've completed your sewing adventure

---

**SHARE  
YOUR** LOOK



Post your pattern and tag us  
[@simplicity\\_creative\\_group](#) and [#simplicitypatterns](#)  
for a chance to be featured on our social media.

Look for more PDF patterns at [simplicity.com](https://www.simplicity.com)

Have a question or need help with your sewing project call us at  
1-800-782-0323

**McCall's**  
by **design**<sub>group</sub>

McCall's ©2024 a division of IG Design Group Americas Inc. • Atlanta, GA 30342 USA [www.thedesigngroup.com](http://www.thedesigngroup.com) • All Rights Reserved. [www.mccall.com](http://www.mccall.com) • Made in the U.S.A. Fabriqué aux États-Unis.

To be used for individual private home use only and not for commercial or manufacturing purposes. • A usage privé seulement et non à des fins commerciales ou de production en série. • Para uso privado solamente, no se puede utilizar con propósitos de comercialización o de producción en serie.