

McCall's

M8541



Designed and printed in USA

Average

MISSES' JACKETS

Suggested Fabrics: Cotton, Cotton Blends, Flannel, Lightweight Corduroy, Linen, Velveteen, Wool Blends. Not suitable for diagonals, checks, stripes or plaids. **Lining:** Lining Fabric. **Interfacing:** Lightweight Fusible.

Notions: **Jacket A or B:** Five 3/8" (1.5cm) buttons, seam binding or stretch lace (opt.). **Also for Jacket B:** 2 3/4 yds. (2.5m) of 3/8" (1.5cm) braid. **Jacket C or D:** Three 3" (8cm) frog closures.

Sizes	6	8	10	12	14	16
European	32	34	36	38	40	42

BODY MEASUREMENTS: Select pattern size based on body measurements

Bust	30 1/2	31 1/2	32 1/2	34	36	38	Ins.
Waist	23	24	25	26 1/2	28	30	"
Hip-9" below waist	32 1/2	33 1/2	34 1/2	36	38	40	"
Back-neck to waist	15 1/2	15 3/4	16	16 1/4	16 1/2	16 3/4	"

View A Jacket	45**	2 1/2	2 3/8	2 3/8	2 3/8	2 3/8	2 3/4	Yds.
	60**	1 5/8	1 3/4	1 3/4	1 3/4	1 3/4	1 3/4	"

View A,B Lining	45***	2	2	2	2	2 1/8	2 1/8	Yds.
Interfacing		20" - 7/8 yd.						

View B Jacket	45**	2 1/4	2 1/4	2 1/4	2 1/4	2 3/8	2 3/8	Yds.
	60**	1 5/8	1 5/8	1 5/8	1 5/8	1 5/8	1 3/4	"

View C Jacket	45**	2	2	2 1/8	2 1/8	2 1/8	2 1/4	Yds.
	60**	1 1/2	1 1/2	1 1/2	1 1/2	1 1/2	1 1/2	"

Interfacing	20"	3/4	3/4	3/4	3/4	3/4	7/8	"
--------------------	-----	-----	-----	-----	-----	-----	-----	---

View C,D Lining	45***	1 3/4	1 3/4	1 3/4	1 7/8	1 7/8	1 7/8	Yds.
View D Jacket	45**	2	2	2	2	2 1/8	2 1/8	Yds.
	60**	1 5/8	1 5/8	1 3/4	1 3/4	1 3/4	1 3/4	"

Interfacing	20"	3/4	3/4	7/8	7/8	7/8	1	"
--------------------	-----	-----	-----	-----	-----	-----	---	---

NOTE: Please refer to the sewing instructions for **FINISHED GARMENT MEASUREMENTS**.

*with nap **without nap

Moins Facile

VESTES POUR JEUNES FEMMES

Tissus Conseillés: Coton, Cottonnades, Flanelle, Velours côtelé léger, Toile de lin, Velours de coton, Lainages. Ne pas convenable pour les tissus en diagonale, à carreaux, à rayures, ou pour tissus écossais. **Double:** Tissu à doubler. **Entoilage:** Thermocollant léger.

Mercurie: **Veste A ou B:** 5 boutons de 1.5cm, ruban d'extra-fort ou dentelle extensible (facultatif). **Aussi pour Veste B:** 2.5m de soutache de 1.5cm. **Veste C ou D:** 3 fermetures à brandebourgs de 8cm.

Tailles	6	8	10	12	14	16
Françaises	34	36	38	40	42	44
Européen	32	34	36	38	40	42

MESURES DU CORPS: Choisissez la taille du patron basée sur les mesures du corps

Poitrine	78	80	83	87	92	97	cm
Taille	58	61	64	67	71	76	"

Hanches (23cm au-dessous de la taille)	83	85	88	92	97	102	cm
Dos du cou à la taille	39.5	40	40.5	41.5	42	42.5	"

Modèle A Veste	115cm*	2.1	2.2	2.2	2.2	2.2	2.5	m
	150cm*	1.5	1.6	1.6	1.6	1.6	1.6	"

Modèle A,B Doubleure	115cm**	1.8	1.8	1.8	1.8	1.8	1.9	m
Entoilage		51cm - 0.8m						

Modèle B Veste	115cm*	1.8	1.8	1.8	1.8	1.8	1.9	m
	150cm*	1.5	1.5	1.5	1.5	1.5	1.6	"

Modèle C Veste	115cm*	1.8	1.8	1.9	1.9	1.9	2.1	m
	150cm*	1.4	1.4	1.4	1.4	1.4	1.4	"

Entoilage	51cm	0.7	0.7	0.7	0.7	0.7	0.8	"
------------------	------	-----	-----	-----	-----	-----	-----	---

Modèle C,D Doubleure	115cm**	0.7	0.7	0.7	0.8	0.8	0.9	m
Modèle D Veste	115cm*	1.8	1.8	1.8	1.8	1.9	1.9	m
	150cm*	1.5	1.5	1.5	1.6	1.6	1.6	"

Entoilage	51cm	1.5	1.6	1.6	1.6	1.6	1.7	"
------------------	------	-----	-----	-----	-----	-----	-----	---

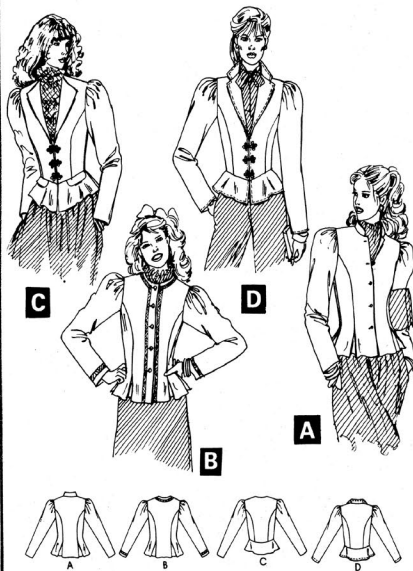
NOTE: S'il vous plaît, reportez-vous aux instructions de couture pour les **MESURES DU VÊTEMENTS FINI**.

*avec sens **sans sens



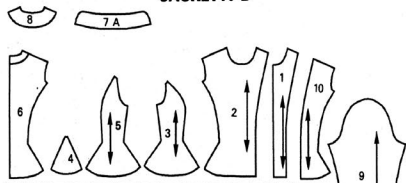
7828

McCALL'S

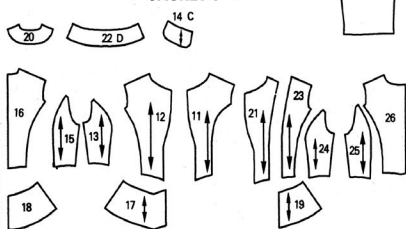


PATTERN PIECES

JACKET A-B



JACKET C-D



- 1. FRONT INTERFACING
- 2. FRONT
- 3. SIDE FRONT
- 4. INSET
- 5. SIDE BACK
- 6. BACK
- 7. COLLAR
- 8. BACK FACING
- 9. SLEEVE
- 10. FRONT LINING
- 11. FRONT INTERFACING
- 12. FRONT
- 13. SIDE FRONT
- 14. FLAP
- 15. SIDE BACK
- 16. BACK
- 17. PEPLUM FRONT
- 18. PEPLUM BACK
- 19. FRONT LINING
- 20. BACK FACING
- 21. FRONT FACING
- 22. COLLAR
- 23. FRONT LINING
- 24. SIDE FRONT LINING
- 25. SIDE BACK LINING
- 26. BACK LINING

PATTERN MARKINGS

- GRAINLINE: Place on straight grain of fabric, an even distance from selvage.
- FOLD LINE: Place on fold of fabric.
- CUTTING LINE: For cutting.
- SEAM LINE: For stitching.
- SEAM ALLOWANCE: Distance between cutting and seam lines, usually 5/8" (1.5cm).
- NOTCHES AND CIRCLES: For matching pattern pieces.

ADJUST IF NECESSARY

A pattern is made to fit body measurements, with extra ease for comfort and style. Adjust pieces before placing on fabric. Adjust back waist and finished garment lengths using



TO SHORTEN: Crease on Easy-Rule Guide. Fold necessary amount. Tape in place.

TO LENGTHEN: Cut on dotted lines of Easy-Rule Guide. Spread necessary amount. Tape over paper.

See McCall's How To Fit book for other adjustments.

CUTTING AND MARKING

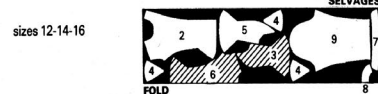
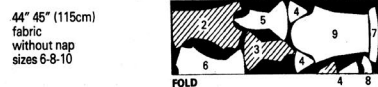
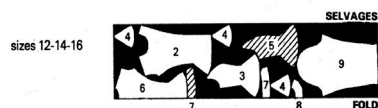
- SHRINK FABRIC not labeled pre-shrunk. Press.
- CIRCLE LAYOUT for View, Size, Fabric Width.
- Use with NAP layout for fabrics with one-way designs, nap, pile or surface shading.
- For DOUBLE THICKNESS - fold fabric with Right Sides Together.
- For SINGLE THICKNESS - place fabric Right Side Up.
- Before CUTTING place all pieces on fabric according to layout. Overlap margins. Pin. Cut ACCURATELY through fabric and pattern on cutting line. Cut notches outward.
- BEFORE REMOVING PATTERN, transfer markings to Wrong Side of fabric. Two ways which may be used quickly are the Pin and Chalk Pencil method or Tracing Paper and Dressmaker Wheel.

CUTTING LAYOUTS

- Black area denotes fabric.
- Pattern pieces to be placed with printed side up.
- Pattern pieces to be placed with printed side down.

A-B JACKET

VIEW A - use pieces 2 thru 9
VIEW B - use pieces 2 thru 6, 8, 9



VIEW B
54" (140cm) fabric with nap sizes 6-8-10

JACKET A or B - continued



Lining
use pieces 3, 5, 6, 9, 10

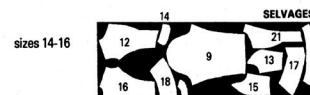


Interfacing
VIEW A - use pieces 1, 7
VIEW B - use pieces 1, 8



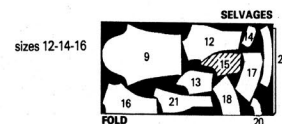
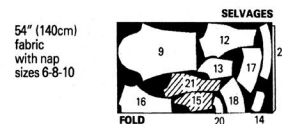
C-D JACKET

VIEW C - use pieces 9, 12 thru 18; 20, 21
VIEW D - use pieces 9, 12, 13; 15 thru 18; 20, 21, 22

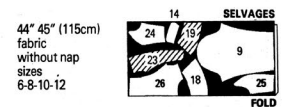


54" (140cm) fabric with nap or without nap sizes 6-8-10-12

JACKET C or D - continued



Lining
VIEW C - use pieces 9, 14, 18, 19; 23 thru 26
VIEW D - use pieces 9, 18, 19; 23 thru 26



Interfacing
VIEW C - use pieces 11, 20
VIEW D - use pieces 11, 20, 22



7828 - PAGE 1

SEWING DIRECTIONS

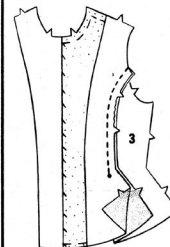
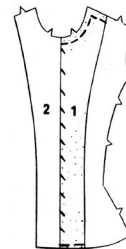
NOTE: If FUSIBLE interfacing is used, follow manufacturer's directions.

LINED JACKET A, or B

1. FRONTS

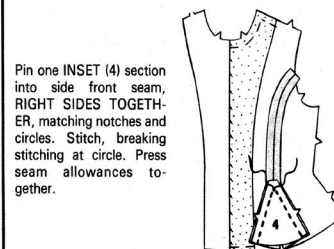
Pin FRONT INTERFACING (1) to WRONG SIDE of FRONT (2), matching notches and having straight edge of interfacing along facing line.

Sew to facing line. Baste interfacing to neck, shoulder and lower edges.

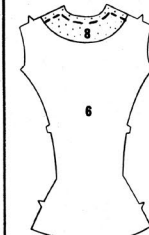


Pin SIDE FRONT (3) to front, RIGHT SIDES TOGETHER, matching notches and circles. Stitch from upper edge to circle, easing front to fit between notches.

Press seam allowances open.



Pin one INSET (4) section into side front seam, RIGHT SIDES TOGETHER, matching notches and circles. Stitch, breaking stitching at circle. Press seam allowances together.



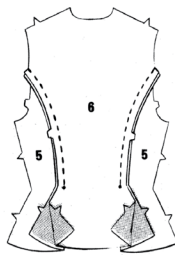
For View B, baste BACK INTERFACING (8) to WRONG SIDE of BACK (6).

FABRIC KEY 	STITCH AND PRESS Pin or baste seams together matching notches. Fit garment before stitching major seams. Stitch in directions of arrows. Use 5/8" (1.5cm) seam allowance unless otherwise indicated.	Press seams open unless otherwise stated. Clip if necessary to press seams flat.	SEAM AND RAW EDGE FINISHES 	SEWING TERMS Turn facing to INSIDE, folding fronts on facing line. Press. Turn up hem, opening out front facings and pressing open seam allowances in hem section. Hand-baste close to fold. Press. Machine-baste 1/4" (6mm) from raw edge. Pull up bobbin thread to ease in fullness. Finish raw edge with zigzag stitching, seam binding or stretch lace. Sew hem in place. Press. Turn facings to INSIDE again. Press. Slipstitch to hem. Clip seam allowances at top of hem. Press. Fold hem RIGHT SIDES TOGETHER on each inset seam. Stitch 1/4" (6mm) from seam thru all thicknesses.	GRADE Cut seam allowances to graduated widths and interfacing close to stitching.	INVISIBLE STITCH Used for hemming. Turn hem back. Pick up a thread of garment; then pick up a thread of hem diagonally above.

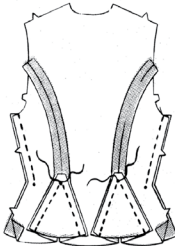
7828 - PAGE 2

2. BACK AND SEAMS

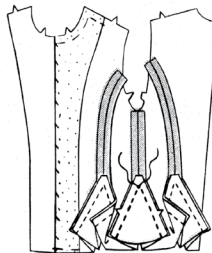
Stitch SIDE BACK (5) to BACK (6) at side back seams, from upper edge to circle.



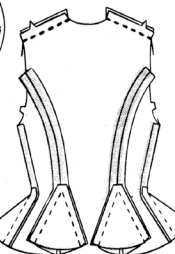
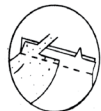
Pin and stitch two more inset sections into side back seams same as previously described.



Stitch back to fronts at sides, from upper edge to circle.



Pin and stitch the remaining inset sections into side seams same as previously described.



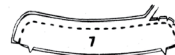
Stitch back to fronts at shoulders, easing back to fit. Cut interfacing close to stitching.

3. COLLAR - VIEW A

Baste interfacing to WRONG SIDE of COLLAR (7).



Stitch COLLAR FACING (7) to collar along UN-NOTCHED edges.

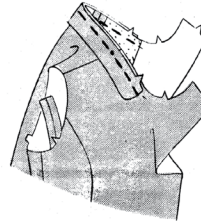


GRADE seam allowances: see SEWING TERMS. Clip curves.



Turn RIGHT SIDE OUT. Press.

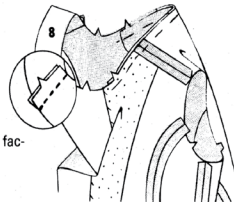
Pin collar to neck edge, RIGHT SIDES TOGETHER matching notches, collar circles to shoulder seams and having front edges at center front. Baste.



4. FACING AND HEM

FACING

NOTE: VIEW A will be shown.



Stitch BACK FACING (8) to front facing extensions at shoulders.

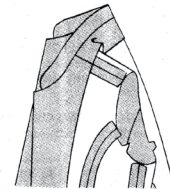
Fold fronts on facing lines, RIGHT SIDES TOGETHER. Pin facing to neck edge (over collar for View A), matching notches and seams. Stitch neck edge.



Cut corners diagonally. GRADE seam allowances. Clip curves.

HEM

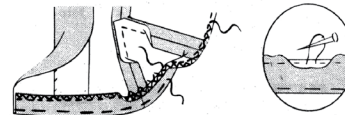
Turn up hem, opening out front facings and pressing open seam allowances in hem section. Hand-baste close to fold. Press.



Machine-baste 1/4" (6mm) from raw edge. Pull up bobbin thread to ease in fullness.

Finish raw edge with zigzag stitching, seam binding or stretch lace.

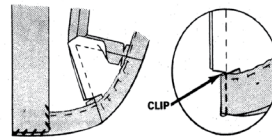
Sew hem in place. Press.



Turn facings to INSIDE again. Press. Slipstitch to hem.

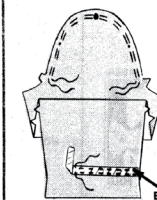
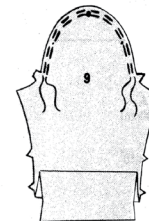
Clip seam allowances at top of hem. Press.

Fold hem RIGHT SIDES TOGETHER on each inset seam. Stitch 1/4" (6mm) from seam thru all thicknesses.



5. SLEEVES

To gather cap of SLEEVE (9) machine-baste 5/8" and 1/2" (1.5cm and 1.3cm) from raw edge between notches.



FOR VIEW B, pin braid above line indicated. Sew in place by hand or machine close to long edges. (Braid will not be shown in the following sketches).



Stitch sleeve seam, easing sleeve to fit between notches. (For View B, be sure to match edges of braid).

Turn up sleeve hem. Hand-baste close to fold. Press.

Sew hem in place. Press.

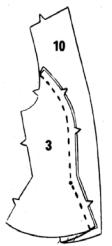
Pin sleeve into armhole, RIGHT SIDES TOGETHER, matching notches, small circles and LARGE circle to shoulder seam. Pull up bobbin threads to gather above small circles. Adjust evenly. Baste, easing sleeve to fit below small circles. Stitch.

Stitch again 1/4" (6mm) from first stitching. Cut seam allowances close to second stitching below notches.

Turn seam allowances toward sleeve, OR for a different fashion look, turn seam allowances toward garment; then on OUTSIDE stitch close to seam.

6. LINING

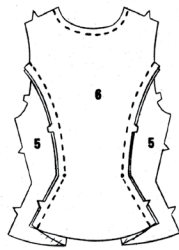
Pin SIDE FRONT LINING (3) to FRONT LINING (10) RIGHT SIDES TOGETHER, matching notches and circles. Stitch, easing front to fit between notches.



7828 - PAGE 3

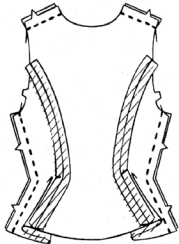
Stitch SIDE BACK LINING (5) to BACK LINING (6) at side back seams.

Stay-stitch neck edge of back lining 1/2" (1.3cm) from raw edge.

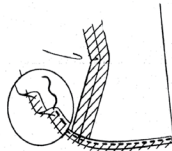


Stitch back lining to front linings at sides.

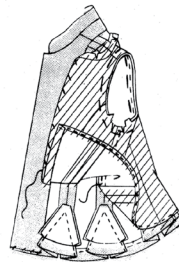
Stitch shoulder seams, easing back to fit.



Finish lower edge of lining with a narrow hem by pressing under 5/8" (1.5cm) on edge. Turn under edge so that raw edge will lay on crease and press. Stitch in place.

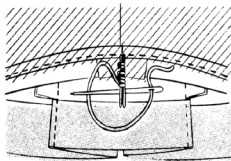


Arrange lining over jacket, WRONG SIDES TOGETHER, matching seams. Pin side seam allowances together. On INSIDE, sew these seam allowances together ending just above inset.



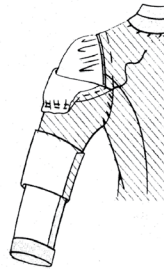
Baste lining to jacket at armholes, clipping underarms of lining as necessary.

Turn under 5/8" (1.5cm) on front and neck edges of lining, clipping to stay-stitching. Pin lining over facing. Slipstitch in place.



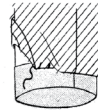
Tack lining seams to center of each inset.

Gather cap of SLEEVE LINING (9) and stitch sleeve seam same as for sleeve.



Slip lining over sleeve, WRONG SIDES TOGETHER.

Turn in upper edge of sleeve lining 5/8" (1.5cm) from raw edge and hem to armhole adjusting gather to fit.



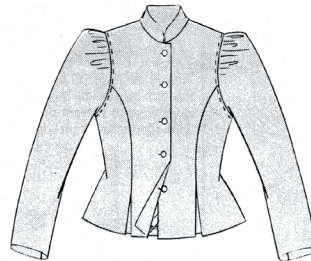
Turn under 5/8" (1.5cm) on lower edge of lining and slipstitch 5/8" (1.5cm) over raw edge of sleeve hem. The extra length in lining forms a fold at lower edge to prevent drawing. Press fold down.

7. FINISHING

BUTTONHOLES AND BUTTONS

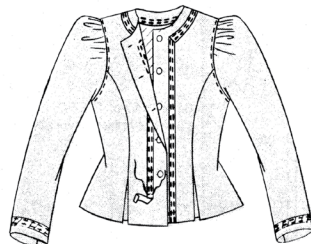
Make buttonholes in RIGHT front.

Lap RIGHT front over LEFT matching centers. Mark and sew buttons under buttonholes.



BRAID - VIEW B

Pin one long edge of braid along line indicated, turning under ends and folding in fullness at corners. Sew in place by hand or machine.



LINED JACKET C or D

1. FRONTS

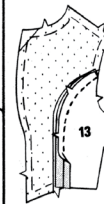
INTERFACING

Pin FRONT INTERFACING (11) to WRONG SIDE of FRONT (12). Cut corner of interfacing diagonally to 1/4" (6mm) INSIDE seam line as illustrated. Baste.



SIDE FRONT SEAM

To ease side front edge of front, machine-baste along seam line between notches.



Pin front to SIDE FRONT (13), RIGHT SIDES TOGETHER, matching notches. Adjust ease to fit. Baste. Stitch.

Press seam allowances open, clipping curve if necessary.

FLAP - VIEW C

With RIGHT SIDES TOGETHER, pin one FLAP LINING (14) to one FLAP (14). Stitch along UN-NOTCHED edge.



Cut seam allowances to 3/8" (1cm).

Turn RIGHT SIDE OUT. Press. Baste raw edges together.



Repeat for second flap.

Pin each flap to front, RIGHT SIDES TOGETHER, matching notches. Baste.

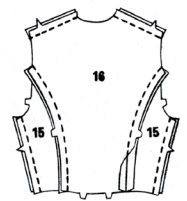


2. BACK AND SEAMS

For View C, baste BACK INTERFACING (20) to WRONG SIDE of BACK (16).

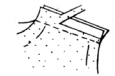


Stitch SIDE BACKS (15) to BACK (16) at side back seams.



Stitch back to front at shoulders, easing back to fit. Cut interfacing close to stitching.

Stitch side seams.

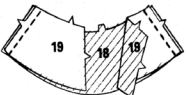


3. PEPLUM

Stitch PEPLUM FRONT (17) to PEPLUM BACK (18) at sides.

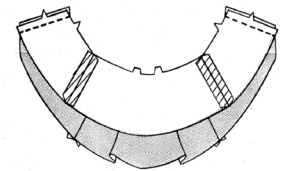


Stitch PEPLUM FRONT LINING (19) to PEPLUM BACK LINING (18) at sides.



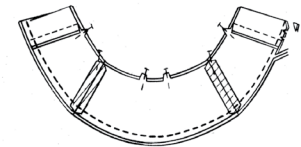
Stitch peplum lining to peplum along front edges.

Press seam allowances toward lining.



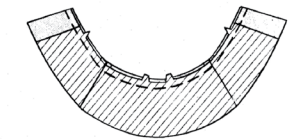
Fold peplum front at center front RIGHT SIDES TOGETHER. Pin lining to peplum, matching seams. Stitch along UN-NOTCHED edge.

Cut corners diagonally. GRADE seam allowances. Clip curve.



Turn RIGHT SIDE OUT. Press, folding peplum front at center front.

Baste raw edges together, matching notches and seams.

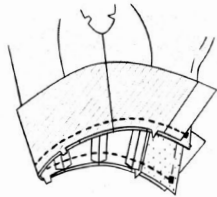


CONTINUED ON OTHER SIDE

7828 - PAGE 4

Pin peplum to jacket, **RIGHT SIDES TOGETHER**, matching notches, seams and having front edges of peplum at squares. Stitch.

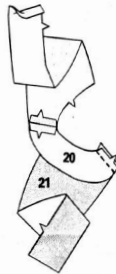
Press seam allowances upward.



4. FACING - VIEW C

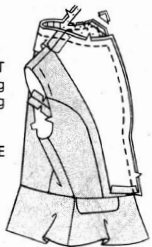
Stitch **BACK FACING (20)** to **FRONT FACINGS (21)** at shoulders.

Press seam allowances open. Press under 5/8" (1.5cm) on lower edge of front facings.



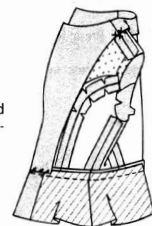
Pin facing to jacket, **RIGHT SIDES TOGETHER**, matching notches and seams. Stitch along front and neck edges.

Cut corners diagonally. **GRADE** seam allowances. Clip curves.



Turn facing to **INSIDE**. press.

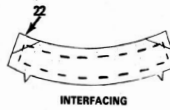
Catch-stitch facing to seams and slipstitch lower edges of front facings over seam.



5. COLLAR AND FACING - VIEW D

To reinforce upper edge of front, machine-stitch along seam line each side of circle as illustrated.

Pin interfacing to **WRONG SIDE** of one **COLLAR (22)** section. (This is the under collar). Cut corners of interfacing diagonally to 1/4" (6mm) **INSIDE** seam line, as illustrated. Baste.

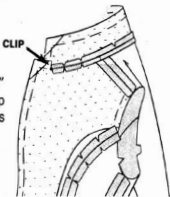


Pin under collar to neck edge, **RIGHT SIDES TOGETHER**, matching notches, small circles and **LARGE** collar circles to shoulder seams. Stitch between small circles.

Cut interfacing close to stitching.



Cut seam allowances to 3/8" (1cm) from stitching. Clip curves and to **SMALL** circles on fronts.

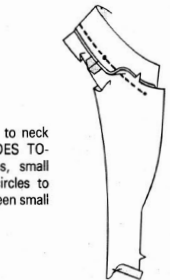
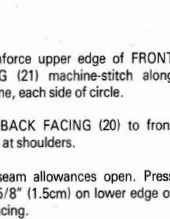


To reinforce upper edge of **FRONT FACING (21)** machine-stitch along seam line, each side of circle.

Stitch **BACK FACING (20)** to front facings at shoulders.

Press seam allowances open. Press under 5/8" (1.5cm) on lower edge of front facing.

Pin remaining **COLLAR (22)** to neck edge of facing, **RIGHT SIDES TOGETHER**, matching notches, small circles and **LARGE** collar circles to shoulder seams. Stitch between small circles.



Cut seam allowances to 3/8" (1cm) from stitching. Clip curves and to **SMALL** circles on facing.

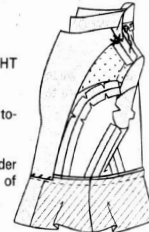
Pin collar and facing to under collar and jacket, **RIGHT SIDES TOGETHER**, matching notches and small circles. Stitch, breaking stitching at **SMALL** circles.

Cut corners diagonally. **GRADE** seam allowances. Clip curves.

Turn collar and facing **RIGHT SIDE OUT**.

Sew neck seam allowances together.

Catch-stitch facing to shoulder seams. Slipstitch lower edge of front facings to seam.



6. SLEEVES

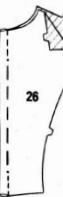
Same as described for **JACKET A** or **B** - 6. **SLEEVES**; omitting instructions for braid trimming.

7. LINING

To ease side front edge of **FRONT LINING (23)**, machine-baste along seam line between notches.

Pin front lining to **SIDE FRONT LINING (24)** **RIGHT SIDES TOGETHER**, matching notches. Adjust ease to fit. Baste. Stitch.

To make pleat in **BACK LINING (26)**, fold in half **RIGHT SIDES TOGETHER**. Baste along pleat line. Stitch along dotted lines to circles. Press pleat to one side.



Stitch **SIDE BACK LINING (25)** to back lining.

Stay-stitch neck edge of back lining 1/2" (1.3cm) from raw edge.

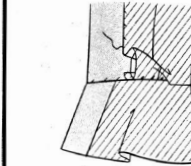
Stitch back lining to front lining at shoulders, easing back to fit. Stitch side seams.

Arrange lining over jacket, **WRONG SIDES TOGETHER**, matching seams. Pin side seam allowances together. On **INSIDE**, sew these seam allowances together to within 1" (2.5cm) of lower edge.

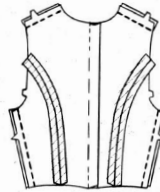
Baste lining to jacket at armholes, clipping underarms of lining as necessary.

Turn under 5/8" (1.5cm) on front and neck edges of lining, clipping to stay-stitching. Slipstitch in place to within 3" (7.5cm) of seam.

Turn under 5/8" (1.5cm) on lower edge of lining and slipstitch over seam. The extra length in lining forms a fold at lower edge to prevent drawing. Press fold downward and finish slipstitching front edges of lining to facing.



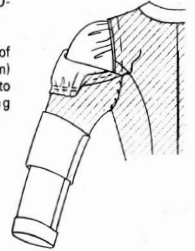
Gather cap of **SLEEVE LINING (9)** and stitch sleeve seam as for sleeve.



Slip lining over sleeve, **WRONG SIDES TOGETHER**.

Turn in upper edge of sleeve lining 5/8" (1.5cm) from raw edge and hem to armhole, adjusting gathers to fit.

Turn under 5/8" (1.5cm) on lower edge of lining and slipstitch 5/8" (1.5cm) from raw edge of sleeve hem. The extra length in lining forms a fold at lower edge to prevent drawing. Press fold down.

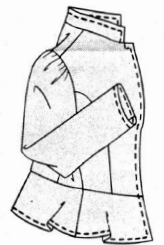


8. FINISHING

FOR VIEW D

FOR VIEW D

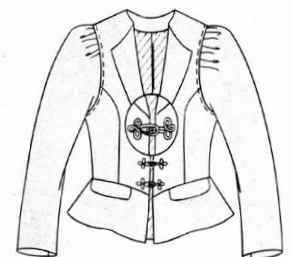
Top-stitch 1/4" (6mm) from front, collar, lower edge of jacket and lower edge of sleeve.



FOR VIEW C or D

FOR VIEW C or D

To sew frogs to front bring front edges together. Center frogs over front at positions indicated with button part on **LEFT** front. Sew in place.





Congrats!

You've completed your sewing adventure

**SHARE
YOUR** LOOK



Post your pattern and tag us
[@simplicity_creative_group](#) and [#simplicitypatterns](#)
for a chance to be featured on our social media.

Look for more PDF patterns at [simplicity.com](https://www.simplicity.com)

Have a question or need help with your sewing project call us at
1-800-782-0323

McCall's
by **design**_{group}

McCall's ©2024 a division of IG Design Group Americas Inc. • Atlanta, GA 30342 USA www.thedesigngroup.com • All Rights Reserved. www.mccall.com • Made in the U.S.A. Fabriqué aux États-Unis.
To be used for individual private home use only and not for commercial or manufacturing purposes. • A usage privé seulement et non à des fins commerciales ou de production en série. • Para uso privado solamente, no se puede utilizar con propósitos de comercialización o de producción en serie.