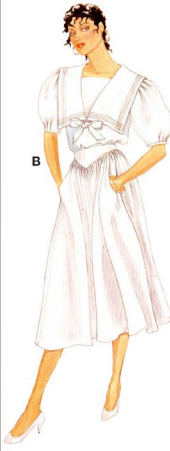


McCall's

M8540



VINTAGE
80's

LAURA ASHLEY
SINCE 1953



Average

MISSES' TOP AND SKIRT

Suggested Fabrics: Challis, Cotton, Cotton Blends, Damask, Lightweight Wool Crepe, Seersucker, Silk Broadcloth. **Contrast Collar and Sleeve Bands** in Solid Color Fabrics only. **All Views:** Not suitable for diagonals. **Interfacing:** Lightweight Fusible.

Notions: Top A or B: Three snaps. **Skirt:** 7" (18cm) zipper, one ½" (1.3cm) button, optional seam binding or stretch lace.

Sizes	6	8	10	12	14	16	18	20	22	24
European	32	34	36	38	40	42	44	46	48	50

BODY MEASUREMENTS: Select pattern size based on body measurements

Bust	30½	31½	32½	34	36	38	40	42	44	46	Ins.
Waist	23	24	25	26½	28	30	32	34	37	39	"
Hip-9" below waist	32½	33½	34½	36	38	40	42	44	46	48	"
Back-neck to waist	15½	15¾	16	16¼	16½	16¾	17	17¼	17½	17¾	"

View A Top - Cut of Striped Fabric

45"*	2¾	2¾	2¾	2½	2½	2¾	2¾	2¾	2¾	2¾	2¾	Yds.
60"*	1¾	1¾	1¾	1¾	1¾	1¾	2½	2½	2¾	2¾	2¾	"

View A Top - Cut of Other Fabric

45"*	2½	2½	2½	2½	2½	2¾	2¾	2¾	2¾	2¾	2¾	Yds.
60"*	1¾	1¾	1¾	1¾	1¾	1¾	1¾	1¾	2	2	2	"

Contrast Collar and Sleeve Bands

45"*	¾	¾	1	1¼	1¼	1¼	1¾	1¾	1¾	1½	Yds.
60"*	¾	¾	¾	¾	1	1	1	1	1	1	"

View B Top

45"*	3¾	3¾	3¾	3½	3½	3¾	3¾	3¾	3¾	3¾	Yds.
60"*	2¼	2¼	2¼	2¼	2¼	2¾	2¾	2¾	2¾	2¾	"

Skirt 60"* - 3¼ yds.

Interfacing	20"	¾	¾	1	1	1	1½	1½	1¼	1¼	1¾	Yds.
--------------------	-----	---	---	---	---	---	----	----	----	----	----	------

NOTE: Please refer to the sewing instructions for **FINISHED GARMENT MEASUREMENTS**.

*with nap **without nap

Moins Facile

HAUT ET JUPE POUR JEUNES FEMMES

Tissus Conseillés: Challis, Coton, Cottonnades, Damas, Crêpe de laine de poids léger, Seersucker, Broadcloth de soie. **Col et bandes de manche contrastants** en tissus de couleur unie uniquement. **Toutes les modèles:** Ne conviennent pas pour diagonales. **Entoilage:** Thermocollant léger.

Mercerie: Haut A ou B: 3 boutons-pressions. **Jupe:** Fermeture à glissière de 18cm, 1 bouton de 1.3cm, ruban d'extra-fort et dentelle extensible facultatif.

Tailles	6	8	10	12	14	16	18	20	22	24
Françaises	34	36	38	40	42	44	46	48	50	52
Européen	32	34	36	38	40	42	44	46	48	50

MESURES DU CORPS: Choisissez la taille du patron basée sur les mesures du corps

Poitrine	78	80	83	87	92	97	102	107	112	117	cm
Taille	58	61	64	67	71	76	81	87	94	99	"
Hanches (23cm au-dessous de la taille)	83	85	88	92	97	102	107	112	117	122	cm
Dos du cou à la taille	39.5	40	40.5	41.5	42	42.5	43	44	44.5	45	"

Modèle A Haut - coupe de tissu à rayures

115cm*	2.2	2.2	2.2	2.3	2.3	2.4	2.4	2.5	2.5	2.6	m
150cm*	1.5	1.5	1.5	1.5	1.6	1.6	2.3	2.3	2.4	2.4	"

Modèle A Haut - coupe d'un autre tissu

115cm*	2.3	2.3	2.4	2.4	2.4	2.5	2.5	2.5	2.5	2.5	m
150cm*	1.6	1.6	1.6	1.6	1.7	1.7	1.7	1.7	1.7	1.8	"

Col et Bandes de manches contrastants

115cm*	0.8	0.8	0.9	1.0	1.0	1.1	1.1	1.3	1.3	1.3	m
150cm*	0.8	0.8	0.8	0.8	0.9	0.9	0.9	0.9	0.9	0.9	"

Modèle B Haut

115cm*	3.0	3.1	3.1	3.2	3.2	3.2	3.3	3.4	3.4	3.4	m
150cm*	2.1	2.1	2.1	2.1	2.1	2.2	2.4	2.4	2.5	2.5	"

Jupe 150cm* - 3.0m

Entoilage	51cm	0.8	0.8	0.9	0.9	0.9	1.0	1.0	1.1	1.1	1.3	m
------------------	------	-----	-----	-----	-----	-----	-----	-----	-----	-----	-----	---

NOTE: S'il vous plaît, reportez-vous au instructions de couture pour les **MESURES DU VÊTEMENTS FINI**.

*avec sens **sans sens



A



B

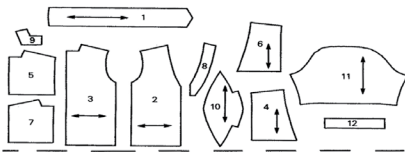


8925 McCALL'S



PATTERN PIECES

TOP A-B



SKIRT



- 1. TIE
- 2. TOP FRONT
- 3. TOP BACK
- 4. UPPER COLLAR
- 5. UPPER COLLAR
- 6. UNDER COLLAR
- 7. UNDER COLLAR
- 8. FRONT NECK FACING
- 9. BACK NECK FACING
- 10. SLEEVE
- 11. SLEEVE
- 12. SLEEVE BACK AND SIDE
- 13. SKIRT BACK AND SIDE
- 14. POCKET
- 15. SKIRT FRONT
- 16. SKIRT WAISTBAND

PATTERN MARKINGS

GRAINLINE: Place on straight grain of fabric, an even distance from selvage.
FOLD LINE: Place on fold of fabric.
CUTTING LINE: For cutting.
SEAM LINE: For stitching.
SEAM ALLOWANCE: Distance between cutting and seam lines, usually 5/8" (1.5cm).
NOTCHES AND CIRCLES: For matching pattern pieces.

ADJUST IF NECESSARY

A pattern is made to fit body measurements, with extra ease for comfort and style.
Adjust pieces before placing on fabric. Adjust back waist and finished garment lengths using **McCALL'S**
TO SHORTEN: Crease on Easy-Rule Guide. Fold necessary amount. Tape in place.
TO LENGTHEN: Cut on dotted lines of Easy-Rule Guide. Spread necessary amount. Tape over paper.
See McCALL'S How To Fit book for other adjustments.

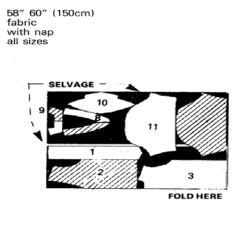
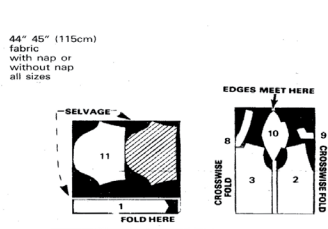
CUTTING AND MARKING

SHRINK FABRIC not labeled pre-shrunk. Press.
CIRCLE LAYOUT for View, Size, Fabric Width.
Use with **NAP** layout for fabrics with one-way designs, nap, pile or surface shading.
For **DOUBLE THICKNESS** - fold fabric with Right Sides Together.
For **SINGLE THICKNESS** - place fabric Right Side Up.
Before **CUTTING** place all pieces on fabric according to layout. Overlap margins. Pin.
Cut **ACCURATELY** through fabric and pattern on cutting line. Cut notches outward.
BEFORE REMOVING PATTERN, transfer markings to Wrong Side of fabric. Two ways which may be used quickly are the Pin and Chalk Pencil method or Tracing Paper and Dressmaker Wheel.

CUTTING LAYOUTS

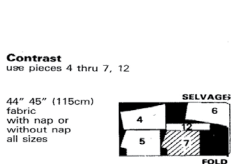
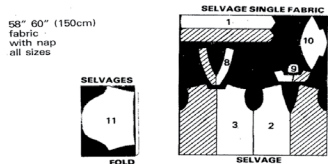
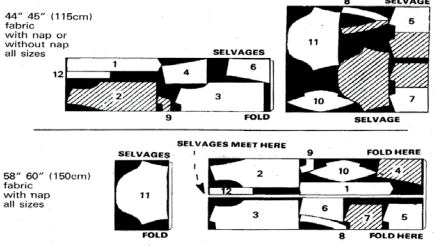
A TOP (STRIPE FABRIC)

use pieces 1, 2, 3, 8 thru 11



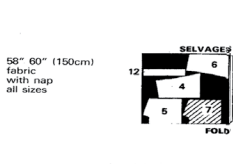
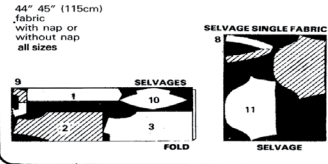
B TOP

use pieces 1 thru 12



A TOP (OTHER FABRIC)

use pieces 1, 2, 3, 8 thru 11



Use this handy reference chart as a guide when selecting your interfacing. Always test for compatibility by fusing or sewing a piece of interfacing to your fabric before applying it to your garment.

INTERFACING GUIDE

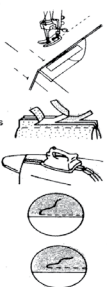
	Fabrics	Interfacing (F) = Fusible (NF) = Non-Fusible
Separates and Dresses (sheer shaping)	voile, chiffon, barieste, tulle, lawn, tulle, organza, crepe de chine, charmeuse	<ul style="list-style-type: none"> • Sheer Blenders #907 (F) • Easy Knit (F) • Easy Shaper (F) • Featherweight #910 All-Bias (NF) • Sheerweave #906 (F)
(soft shaping)	challis, jersey, single knit, tricot, crepe,	<ul style="list-style-type: none"> • Add Shape Featherite (NF) • Easy Knit (F) • Easy Shaper (F) • Featherweight #910 All-Bias (NF) • Soft Shape #880 All-Bias (F)
(crisp shaping)	shirtings, gingham, poplin, chambray, seersucker, cotton, broadcloth, oxford cloth, pique, cotton blends, crepe, lightweight denim	<ul style="list-style-type: none"> • Featherweight #911 All-Bias (F) • Sheerweave #906 (F) • Sheerweave #907 (NF) • Sheerweave #908 (NF) • Sheerweave #909 (NF) • Sheerweave #910 All-Bias (NF) • Sheerweave #911 All-Bias (NF) • Sheerweave #912 All-Bias (NF) • Sheerweave #913 All-Bias (NF) • Sheerweave #914 All-Bias (NF) • Sheerweave #915 All-Bias (NF) • Sheerweave #916 All-Bias (NF) • Sheerweave #917 All-Bias (NF) • Sheerweave #918 All-Bias (NF) • Sheerweave #919 All-Bias (NF) • Sheerweave #920 All-Bias (NF) • Sheerweave #921 All-Bias (NF) • Sheerweave #922 All-Bias (NF) • Sheerweave #923 All-Bias (NF) • Sheerweave #924 All-Bias (NF) • Sheerweave #925 All-Bias (NF) • Sheerweave #926 All-Bias (NF) • Sheerweave #927 All-Bias (NF) • Sheerweave #928 All-Bias (NF) • Sheerweave #929 All-Bias (NF) • Sheerweave #930 All-Bias (NF) • Sheerweave #931 All-Bias (NF) • Sheerweave #932 All-Bias (NF) • Sheerweave #933 All-Bias (NF) • Sheerweave #934 All-Bias (NF) • Sheerweave #935 All-Bias (NF) • Sheerweave #936 All-Bias (NF) • Sheerweave #937 All-Bias (NF) • Sheerweave #938 All-Bias (NF) • Sheerweave #939 All-Bias (NF) • Sheerweave #940 All-Bias (NF) • Sheerweave #941 All-Bias (NF) • Sheerweave #942 All-Bias (NF) • Sheerweave #943 All-Bias (NF) • Sheerweave #944 All-Bias (NF) • Sheerweave #945 All-Bias (NF) • Sheerweave #946 All-Bias (NF) • Sheerweave #947 All-Bias (NF) • Sheerweave #948 All-Bias (NF) • Sheerweave #949 All-Bias (NF) • Sheerweave #950 All-Bias (NF) • Sheerweave #951 All-Bias (NF) • Sheerweave #952 All-Bias (NF) • Sheerweave #953 All-Bias (NF) • Sheerweave #954 All-Bias (NF) • Sheerweave #955 All-Bias (NF) • Sheerweave #956 All-Bias (NF) • Sheerweave #957 All-Bias (NF) • Sheerweave #958 All-Bias (NF) • Sheerweave #959 All-Bias (NF) • Sheerweave #960 All-Bias (NF) • Sheerweave #961 All-Bias (NF) • Sheerweave #962 All-Bias (NF) • Sheerweave #963 All-Bias (NF) • Sheerweave #964 All-Bias (NF) • Sheerweave #965 All-Bias (NF) • Sheerweave #966 All-Bias (NF) • Sheerweave #967 All-Bias (NF) • Sheerweave #968 All-Bias (NF) • Sheerweave #969 All-Bias (NF) • Sheerweave #970 All-Bias (NF) • Sheerweave #971 All-Bias (NF) • Sheerweave #972 All-Bias (NF) • Sheerweave #973 All-Bias (NF) • Sheerweave #974 All-Bias (NF) • Sheerweave #975 All-Bias (NF) • Sheerweave #976 All-Bias (NF) • Sheerweave #977 All-Bias (NF) • Sheerweave #978 All-Bias (NF) • Sheerweave #979 All-Bias (NF) • Sheerweave #980 All-Bias (NF) • Sheerweave #981 All-Bias (NF) • Sheerweave #982 All-Bias (NF) • Sheerweave #983 All-Bias (NF) • Sheerweave #984 All-Bias (NF) • Sheerweave #985 All-Bias (NF) • Sheerweave #986 All-Bias (NF) • Sheerweave #987 All-Bias (NF) • Sheerweave #988 All-Bias (NF) • Sheerweave #989 All-Bias (NF) • Sheerweave #990 All-Bias (NF) • Sheerweave #991 All-Bias (NF) • Sheerweave #992 All-Bias (NF) • Sheerweave #993 All-Bias (NF) • Sheerweave #994 All-Bias (NF) • Sheerweave #995 All-Bias (NF) • Sheerweave #996 All-Bias (NF) • Sheerweave #997 All-Bias (NF) • Sheerweave #998 All-Bias (NF) • Sheerweave #999 All-Bias (NF) • Sheerweave #1000 All-Bias (NF)
Coats, Dresses, Jackets and Suits (soft shaping)	wool, linen, denim, poplin, chambray, seersucker, cotton, broadcloth, oxford cloth, pique, cotton blends, crepe, lightweight denim	<ul style="list-style-type: none"> • Easy Shaper Suitweight (F) • Soft Shape #880 All-Bias (F) • Suit Shape (F) • Tailor's Touch (F) • Basted-in, mono-fiber, synthetic leather and suede • Hair Canvas #77 (NF) • Midweight #890 All-Bias (NF) • Midweight #931TD (F) • Pel-Aire Suitweight #881 (F)
(crisp shaping)		<ul style="list-style-type: none"> • Easy Knit (F) • Easy Shaper Lightweight (F) • Featherweight #911 All-Bias (NF) • Inverton Bias Featherweight (NF) • Soft Shape #880 All-Bias (F) • Stretch-Ease (F)
Knits Only	double knits, cotton or blended knits, single knits, lightweight sweater knits, jersey, lightweight velour, sweatshirt fleece	<ul style="list-style-type: none"> • Easy-Knit (F) • Easy Shaper Lightweight (F) • Featherweight #911 All-Bias (NF) • Inverton Bias Featherweight (NF) • Soft Shape #880 All-Bias (F) • Stretch-Ease (F) • Pelton • Stacy

• Sheer Blenders, Soft-Shape, Pel-Aire and Stretch-Ease are registered trademarks of the Pelton Corporation.
• These products are registered trademarks of Stacy Fabric Corporation.

For **FUSIBLE** interfacing, follow manufacturer's directions.

SEWING INFORMATION

PIN AND FIT
Pin or baste seams, **RIGHT SIDES TOGETHER**, matching notches. Fit garment before stitching major seams.
STITCH
Use 5/8" (1.5cm) seam allowance unless otherwise specified. Use guide line marking on throat plate of machine for accurate seam allowance.
If your machine does not have this marking, make your own with adhesive tape placed 5/8" (1.5cm) from needle hole.
GRADE
Cut seam allowances to graduated widths and interfacing close to stitching.
PRESS
Press seams open unless otherwise stated. Clip if necessary to press seams flat.
EDGE-STITCHING
On **OUTSIDE**, stitch close to seams or finished edge.
TOP-STITCHING
On **OUTSIDE**, stitch 1/4" to 3/8" (6mm to 1cm) away from seam or finished edge, using presser foot as a guide.



FABRIC KEY

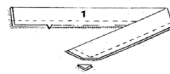


SEWING DIRECTIONS

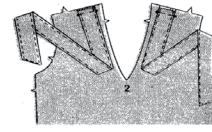
TOP - A or B

1. TIES

Fold tie (1) in half lengthwise, **RIGHT SIDES TOGETHER**. Stitch raw edges together, leaving end nearest notch free.
Cut corners diagonally.



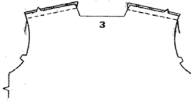
Turn **RIGHT SIDE OUT**. Press.
Edge-stitch along finished edges.



On **OUTSIDE**, baste ties to shoulder edges of **TOP FRONT** (2) between circles, having seamed edge of ties toward sides.

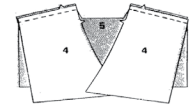
2. SHOULDER SEAMS

Stitch **TOP BACK** (3) to top front at shoulders.



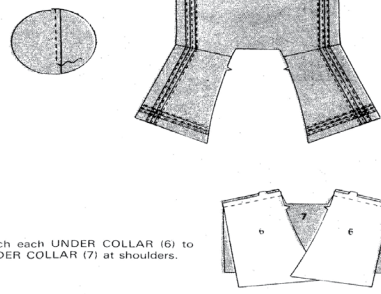
3. COLLAR AND NECK FACING

Stitch each **UPPER COLLAR** (4) to **UPPER-COLLAR** (5) at shoulders.



To make pin tucks on lower edges of upper collar, on **OUTSIDE** fold on solid lines. Press. Stitch 1/16" (1.5mm) from folds. Press downward.

Make pin tucks on shoulder edges of upper collar in same manner. Press toward sides.



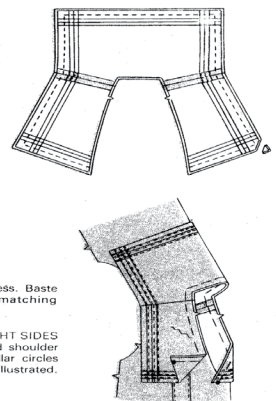
Stitch each **UNDER COLLAR** (6) to **UNDER COLLAR** (7) at shoulders.

Pin upper collar to under collar. **RIGHT SIDES TOGETHER**, matching shoulder seams and having outer edges even. Stitch along outer edges.

Cut corners diagonally. **GRADE** seam allowances: see **SEWING INFORMATION**.

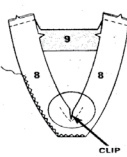
Turn **RIGHT SIDE** out. Press. Baste neck edges together, matching notches.

Pin collar to neck edge. **RIGHT SIDES UP**, matching notches and shoulder seams, having **LARGE** collar circles meet at center front, as illustrated. Baste.



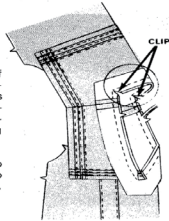
8925 - PAGE 2

To reinforce inward corner of FRONT NECK FACING (8), machine-stitch 5/8" (1.5cm) from raw edge each side of corner. Clip at stitching at corner.



Stitch BACK NECK FACING (9) to front neck facing at shoulders.

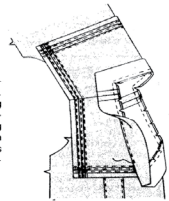
Finish UN-NOTCHED edge of facing with zigzag stitching, pinking or turning under 1/4" (6mm) and edge-stitching.



Pin facing to neck edge of TOP, RIGHT SIDES TOGETHER, matching notches, centers and seams. Bring points of collar thru clip on facing, as illustrated. Stitch, keeping points of collar free.

GRADE seam allowances. Clip inward corners on back and to stitching on front. Clip curves.

Press facing and seam allowances away from neck edge. UNDERSTITCH by stitching thru facing and seam allowances close to seam, starting and stopping 1" (2.5cm) from inward corners. (This prevents facing from rolling to OUTSIDE.)

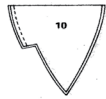


Turn facing to INSIDE. Press. Catch-stitch facing to seams.



4. DICKEY

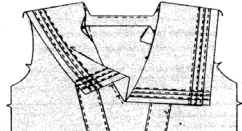
Fold DICKEY (10) on fold line, RIGHT SIDES TOGETHER. Stitch long edges of extension together, taking up a 1/4" (6mm) seam allowance.



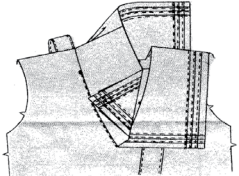
Turn RIGHT SIDE OUT, folding along fold line. Press. Baste raw edges together.



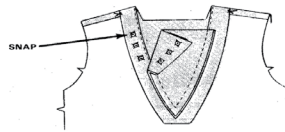
Slip dickey under front edges, RIGHT SIDES UP, matching centers, circles on LEFT side, having upper edge of dickey at squares and front edges along seam line and solid line. Lift up collar and pin front to dickey.



On OUTSIDE, stitch front close to neck seam between square on RIGHT side and circle on LEFT side, thru all thicknesses.



Sew ball half of snaps to dickey at positions indicated. Sew remaining half of snap fasteners to front neck facing at positions indicated.



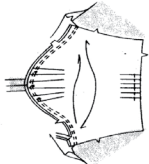
5. SLEEVES AND UNDERARM SEAMS

To make pleats in cap and lower edge of SLEEVE (11), on OUTSIDE bring dotted lines to solid lines in direction of arrows. Baste across upper and lower edges of sleeve.

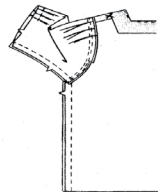


With RIGHT SIDES TOGETHER, pin sleeve to armhole edge, matching notches, small circles and LARGE circle to shoulder seam.

Baste, easing in sleeve below small circles. Stitch. Stitch again 1/4" (6mm) from first stitching. Cut seam allowances close to second stitching below notches. Turn seam allowances toward front and back.



Stitch underarm seams of TOP and sleeves, matching armhole seams and notches.

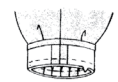


Stitch seam in SLEEVEBAND (12).



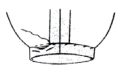
Press under 5/8" (1.5cm) on UN-NOTCHED edge of sleeveband.

Pin sleeveband to lower edge of sleeve, RIGHT SIDES TOGETHER, matching notches and seams. Stitch.



GRADE seam allowances. Press seam allowances toward sleeveband.

Hem pressed edge of sleeveband over seam. Press.



6. HEM

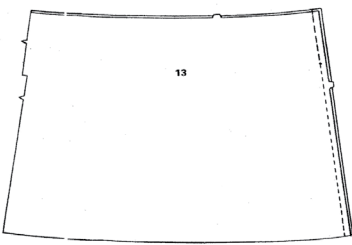
Finish lower edge of TOP with a 5/8" (1.5cm) narrow hem.



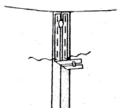
SKIRT

1. CENTER BACK SEAM AND ZIPPER

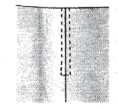
Stitch center back seam in SKIRT BACK AND SIDES (13) from lower edge to circle. Machine-baste opening edges together above circle. Press open.



On INSIDE, center closed zipper face down over basted seam with pull-tab 7/8" (2.2cm) from upper edge. Hand-baste, thru all thicknesses - fabric and tape.

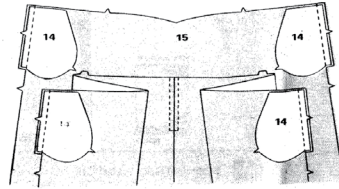


On OUTSIDE, stitch 1/4" (6mm) from seam with a zipper foot. Remove basting.



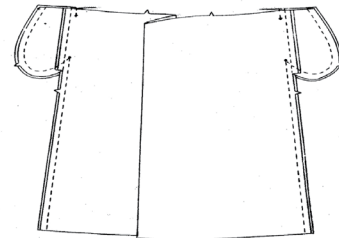
2. POCKETS AND SIDE FRONT SEAMS

With RIGHT SIDES TOGETHER, stitch POCKETS (14) to skirt back and sides and SKIRT FRONT (15) extensions. Press seam allowances toward pockets.



Pin front to back at side fronts, matching notches and circles. Pin pocket edges together.

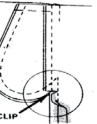
Stitch from lower edge to lower circle; then continue around pockets to upper edge. Stitch along dotted line from upper edge to upper circle.



Clip back seam allowances below pockets.

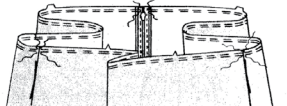
Press side front seams open. Turn pockets toward front and press lightly along solid line.

Baste pockets to front at upper edge.

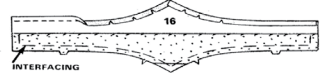


3. WAISTBAND

To gather upper edge of skirt, machine-baste 5/8" and 1/2" (1.5cm and 1.3cm) from upper edge, breaking basting at seams.

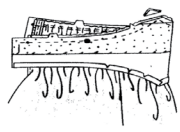


Stitch along long UN-NOTCHED edge of WAISTBAND (16) 5/8" (1.5cm) from raw edge. Press under along line of stitching, clipping curve to stitching as necessary.



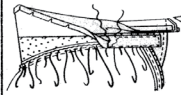
Pin interfacing to WRONG SIDE of NOTCHED edge of waistband. Cut center front corner of interfacing diagonally to 1/4" (6mm) INSIDE seam line, as illustrated. Baste. Sew to fold line.

Pin waistband to skirt, RIGHT SIDES TOGETHER, matching notches, centers, squares and circles to opening edges. Pull up bobbin threads and adjust gathers to fit. Baste. Stitch.



Cut corners diagonally. GRADE seam allowances: see SEWING INFORMATION. Press seam allowances toward waistband.

Fold waistband on fold line, RIGHT SIDES TOGETHER. Stitch ends.



Cut corners diagonally. GRADE seam allowances.

Turn RIGHT SIDE OUT. Hem pressed edge of waistband over seam. Press.

Edge-stitch along all edges of waistband.

Make buttonhole in waistband at marking.

Sew button to position on waistband.

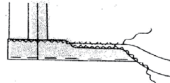


4. HEM

Mark hemline. Turn up hem along marking. Hand-baste close to fold. Press. Trim hem to an even width.

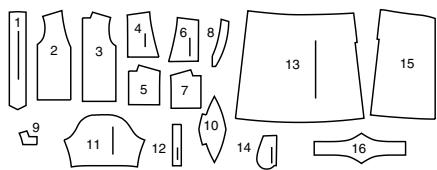
Finish raw edge with zigzag stitching, stitching 1/8" (3mm) from raw edge, or using seam binding or stretch lace.

Sew hem in place. Press.



SUPPLEMENTAL CUTTING LAYOUTS

16 PATTERN PIECES



- 1 Tie
- 2 Top Front
- 3 Top Back
- 4 Upper Collar
- 5 Upper Collar
- 6 Undercollar
- 7 Undercollar
- 8 Front Neck Facing
- 9 Back Neck Facing
- 10 Dickey
- 11 Sleeve
- 12 Sleeve Band
- 13 Skirt Back and Side
- 14 Pocket
- 15 Skirt Front
- 16 Skirt Waistband

Sizes	6	8	10	12	14	16	18	20	22	24
European	32	34	36	38	40	42	44	46	48	50

FINISHED GARMENT MEASUREMENTS (Includes Design and Wearing Ease)

View A,B Bust	37½	38½	39½	41	43	45	47	49	51	53	Ins.
View A,B Waist	37½	38½	39½	41	43	45	47	49	51	53	"
Width, lower edge											
View A,B Top	37½	38½	39½	41	43	45	47	49	51	53	Ins.
Finished back length from base of neck											
View A,B Top	25½	25¼	26	26¼	26¾	27	27¼	27½	27¾	28	Ins.
Finished back length from waist											
Skirt	32	32	32	32	32	32	32	32	32	32	Ins.

PATTERN MARKINGS

GRAINLINE: Place on straight grain of fabric, parallel to selvage or fold.

FOLDLINE: Place line on fold of fabric.

BUTTONHOLE MARKING: Indicates exact length and placement of buttonholes.

BUTTON MARKING: Indicates button placement.

NOTCHES AND SYMBOLS: For matching seams and construction details.

Indicates the Bustline, Waistline, Hip and/or Biceps. Measurements refer to circumference of Finished Garment (Body Measurement + Wearing Ease + Design Ease). Adjust pattern if necessary. The measurement excludes pleats, tucks, darts and seam allowances.

SEAM ALLOWANCE: 5/8" (1.5cm) included unless otherwise indicated, but not printed on tissue.

ADJUST IF NECESSARY

Lengthen or Shorten at adjustment lines (==) or where indicated on pattern. If substantial length is added, you may need to purchase additional fabric.

TO SHORTEN: Crease along adjustment line. Make a fold half the amount needed. Tape in place.

TO LENGTHEN: Slash between adjustment lines. Spread amount as needed, keeping edges parallel. Tape over paper.

When Alteration lines are not on tissue, lengthen or shorten at lower edge.

CUTTING AND MARKING

SHRINK FABRIC if not labeled pre-shrunk. Press.

CIRCLE LAYOUT for View, Size, Fabric Width.

Use **WITH NAP** layout for fabrics with one-way designs, nap, pile or surface shading. Because most knits have surface shading, a with nap layout is used.

For **DOUBLE THICKNESS (WITH FOLD)** - fold fabric with right sides together.

*** DOUBLE THICKNESS (WITHOUT FOLD)** - For fabrics with nap, fold fabric crosswise, right sides together. Mark as shown. Cut along crosswise fold of fabric (A). Turn upper layer 180° so arrows go in same direction and place over lower layer, right sides together (B).

For **SINGLE THICKNESS** - place fabric right side up. (For Fur Pile fabrics, place pile side down.)

★ Cut other pieces first, allowing enough fabric to cut this piece. Open fabric. For "Cut 1" pieces, cut piece once on single layer of fabric with piece face up on right side of fabric.

Pattern may have cutting lines for several sizes. Select the proper cutting line or pattern pieces for your size.

Before **CUTTING** place all pieces on fabric according to layout. Pin. (Layouts show approximate position of pattern pieces; position may vary according to your pattern size.) Cut **ACCURATELY**, cutting notches outward.

Before removing pattern, **TRANSFER MARKINGS** and lines of construction to Wrong Side of fabric, using the Pin and Chalk Pencil method or Tracing Paper and Dressmaker Wheel. Markings needed on right side of fabric should be thread traced.

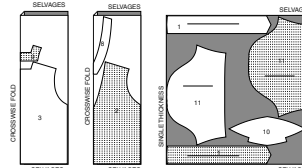
NOTE: Broken-line boxes (a! b! c!) in layouts represent pieces cut by measurements provided.

CUTTING LAYOUTS

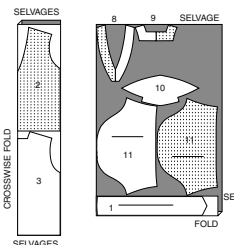
RIGHT SIDE OF PATTERN	WRONG SIDE OF PATTERN	RIGHT SIDE OF FABRIC	WRONG SIDE OF FABRIC

VIEW A TOP - CUT OF STRIPED FABRIC
USE PIECES: 1 2 3 8 9 10 11

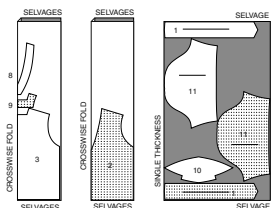
45" (115 CM)
WITH NAP
ALL SIZES



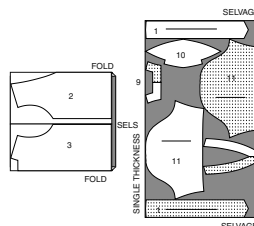
60" (150 CM)
WITH NAP
SIZES 6 8 10 12 14 16



60" (150 CM)
WITH NAP
SIZES 18 20 22 24

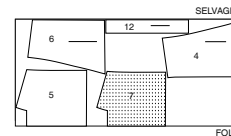


60" (150 CM)
WITH NAP
ALL SIZES

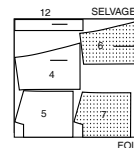


CONTRAST COLLAR AND SLEEVE BANDS
USE PIECES: 4 5 6 7 12

45" (115 CM)
WITH NAP
ALL SIZES

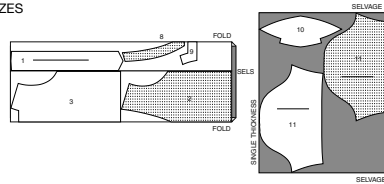


60" (150 CM)
WITH NAP
ALL SIZES



VIEW A TOP - CUT OF OTHER FABRIC
USE PIECES: 1 2 3 8 9 10 11

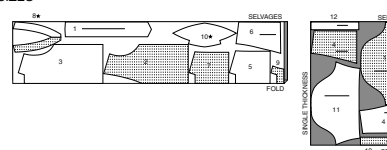
45" (115 CM) WITH NAP
ALL SIZES



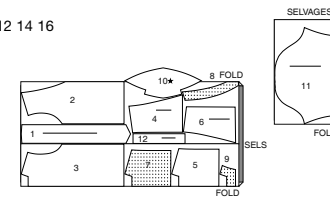
VIEW B TOP

USE PIECES: 1 2 3 4 5 6 7 8 9 10 11 12

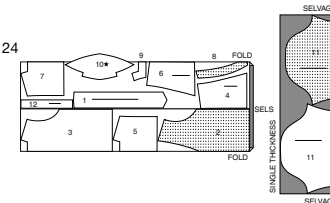
45" (115 CM)
WITH NAP
ALL SIZES



60" (150 CM)
WITH NAP
SIZES 6 8 10 12 14 16



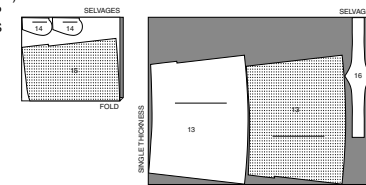
60" (150 CM)
WITH NAP
SIZES 18 20 22 24



SKIRT

USE PIECES: 13 14 15 16

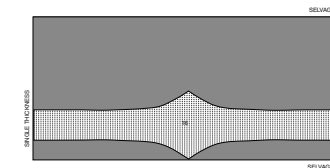
60" (150 CM)
WITH NAP
ALL SIZES



INTERFACING

USE PIECE: 16

20" (51 CM)
WITHOUT NAP
ALL SIZES





Congrats!

You've completed your sewing adventure

**SHARE
YOUR** LOOK



Post your pattern and tag us
[@simplicity_creative_group](#) and [#simplicitypatterns](#)
for a chance to be featured on our social media.

Look for more PDF patterns at [simplicity.com](#)

Have a question or need help with your sewing project call us at
1-800-782-0323

McCall's
by **design**_{group}

McCall's ©2024 a division of IG Design Group Americas Inc. • Atlanta, GA 30342 USA [www.thedesigngroup.com](#) • All Rights Reserved. [www.mccall.com](#) • Made in the U.S.A. Fabriqué aux États-Unis.
To be used for individual private home use only and not for commercial or manufacturing purposes. • A usage privé seulement et non à des fins commerciales ou de production en série. • Para uso privado solamente, no se puede utilizar con propósitos de comercialización o de producción en serie.