

McCall's

M8539



VINTAGE
80's

LAURA ASHLEY
SINCE 1953



Designed and
printed in USA

Average

MISSSES' DRESS

Suggested Fabrics: Challis, Chambray, Cotton Blends, Crepe de Chine, Gingham, Soft Cottons. Not suitable for diagonals. **Lining:** Batiste, Lining Fabric.

Notions: One 14" (36cm) zipper.

Sizes	6	8	10	12	14	16	18	20	22	24
European	32	34	36	38	40	42	44	46	48	50

BODY MEASUREMENTS: Select pattern size based on body measurements

Bust	30½	31½	32½	34	36	38	40	42	44	46	Ins.
Waist	23	24	25	26½	28	30	32	34	37	39	"
Hip-9" below waist	32½	33½	34½	36	38	40	42	44	46	48	"
Back-neck to waist	15½	15¾	16	16¼	16½	16¾	17	17¼	17½	17¾	"

View A, B Lining

45"***	¾	¾	¾	7/8	7/8	1	1	1	1	1	Yds.
--------	---	---	---	-----	-----	---	---	---	---	---	------

View A Dress

45"*	7½	7½	7½	7½	7½	7½	7½	7½	7½	7½	Yds.
60"*	5¼	5¼	5¼	5¼	5¼	5¼	5¼	5½	5½	5½	"

View B Dress

45"*	5/8	5/8	5/8	5/8	5/8	5/8	5/8	6	6½	6½	Yds.
60"*	4¼	4¼	4¼	4¼	4¼	4¼	4¼	4¾	4¾	5	"

Contrast (Collar) - 45, 60" - 1½ yds.

FINISHED GARMENT MEASUREMENTS (Includes Design and Wearing Ease)

View A, B Bust 35 36 37 38½ 40½ 42½ 44½ 46½ 48½ 50½ Ins.

Finished back length from base of neck

View A, B Dress 47 47¼ 47½ 47¾ 48 48¼ 48½ 48¾ 49 49¼ Ins.

Moins Facile

ROBE POUR JEUNES FEMMES

Tissus Conseillés: Challis, Chambray, Cotonnades, Crêpe de chine, Vichy, Cotons souples. Ne conviennent pas pour diagonales. **Doublure:** Batiste, Tissue à doublure.

Mercerie: 1 fermeture à glissière de 36cm.

Tailles	6	8	10	12	14	16	18	20	22	24
Françaises	34	36	38	40	42	44	46	48	50	52
Européen	32	34	36	38	40	42	44	46	48	50

MESURES DU CORPS: Choisissez la taille du patron basée sur les mesures du corps

Poitrine	78	80	83	87	92	97	102	107	112	117	cm
Taille	58	61	64	67	71	76	81	87	94	99	"

Hanches (23cm au-dessous de la taille)

	83	85	88	92	97	102	107	112	117	122	cm
Dos du cou à la taille	39.5	40	40.5	41.5	42	42.5	43	44	44.5	45	"

Modèle A, B Doublure

115cm**	0.7	0.7	0.7	0.8	0.8	0.8	0.9	0.9	0.9	0.9	m
---------	-----	-----	-----	-----	-----	-----	-----	-----	-----	-----	---

Modèle A Robe

115cm*	6.9	6.9	6.9	6.9	6.9	7.0	7.0	7.0	7.0	7.2	m
150cm*	4.8	4.8	4.8	4.8	4.8	4.8	4.8	5.0	5.1	5.4	"

Modèle B Robe

115cm*	5.3	5.4	5.4	5.4	5.4	5.4	5.4	5.5	5.5	5.6	m
150cm*	3.8	3.9	3.9	3.9	3.9	3.9	3.9	4.0	4.2	4.6	"

Contraste (Col) - 115, 150cm* - 1.4m

MESURES DES VÊTEMENTS FINI (Motif et aisance de port compris)

Modèle A, B Poitrine 89 91 94 98 103 108 113 118 123 128 cm

Longueur finie – dos, votre nuque à l'ourlet

Modèle A, B Robe 119 120 A 121 122 123 123 124 124 125 cm



A



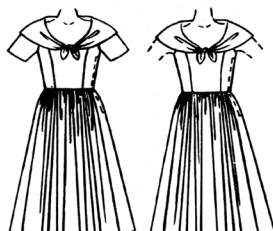
B

*with nap **without nap

*avec sens **sans sens

4322 McCALL'S®

FRONT



A B

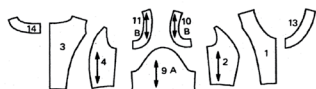
BACK



A B

PATTERN PIECES

DRESS A-B



DRESS A-B

1. BODICE FRONT
2. BODICE SIDE FRONT
3. BODICE BACK
4. BODICE SIDE BACK
5. SKIRT FRONT
6. SKIRT SIDE FRONT
7. SKIRT BACK
8. SKIRT SIDE BACK
9. SLEEVE A
10. ARMHOLE FACING FRONT B
11. ARMHOLE FACING BACK B
12. COLLAR
13. FRONT NECK FACING
14. BACK NECK FACING

PATTERN MARKINGS

GRAINLINE: Place on straight grain of fabric, an even distance from selvage or fold.

FOLD LINE: Place on fold of fabric.

CUTTING LINE: For cutting.

SEAM LINE: For stitching.

SEAM ALLOWANCE: Distance between cutting and seam lines, usually 5/8" (1.5cm). On multi-sized patterns seam allowance is included, but not printed on tissue.

NOTCHES AND CIRCLES: For matching pattern pieces.

FINISHED GARMENT MEASUREMENT SYMBOL: The finished garment measurements at bust and/or hip are printed on your Front pattern pieces. The measurement includes Body Measurement + Wearing Ease + Design Ease. The measurement excludes pleats, tucks, darts and seam allowances. Measurements are also printed on the back of the pattern envelope when space is available.

ADJUST IF NECESSARY

A pattern is made to fit body measurements, with extra ease for comfort and style. Adjust pieces before placing on fabric. Adjust back waist, sleeve and finished garment lengths using McCALL'S Easy-Rule Guide.

TO SHORTEN: Crease on Easy-Rule Guide. Fold necessary amount. Tape in place.



TO LENGTHEN: Cut on dotted lines of Easy-Rule Guide. Spread necessary amount. Tape over paper.



When Easy-Rule Guide is not on tissue, lengthen or shorten at lower edge.

CUTTING AND MARKING

SHRINK FABRIC not labeled pre-shrunk. Press. CIRCLE LAYOUT for View, Size, Fabric Width.

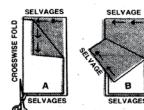
Use WITH NAP layout for fabrics with one-way designs, nap, pile or surface shading. Because most knits have surface shading, a with nap layout is used.

For DOUBLE THICKNESS (WITH FOLD) - fold fabric with Right Sides Together.

* DOUBLE THICKNESS (WITHOUT FOLD) - For fabrics with nap, fold fabric crosswise, RIGHT SIDES TOGETHER. Mark as shown. Cut along crosswise fold of fabric (A). Turn upper layer 180° so arrows go in same direction and place over lower layer, RIGHT SIDES TOGETHER (B).

For SINGLE THICKNESS - place fabric Right Side Up. Before CUTTING place all pieces on fabric according to layout. Overlap margins. Pin. Cut ACCURATELY through fabric and pattern on cutting line. Cut notches outward.

BEFORE REMOVING PATTERN, transfer markings to Wrong Side of fabric. Two ways which may be used quickly are the Pin and Chalk Pencil method or Tracing Paper and Dressmaker Wheel.



CUTTING LAYOUTS

Black area denotes fabric.

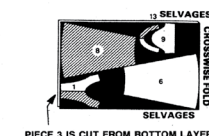
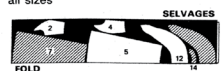
NOTE: Pattern pieces may interlock more closely for smaller sizes.

* The finished garment measurements at bust and/or hip printed on your pattern tissue = Body Measurement + Wearing Ease + Design Ease.

IMPORTANT: Layouts illustrated are suitable for corresponding Miss or Miss Petite sizes.

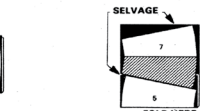
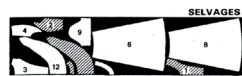
A DRESS
use pieces 1 thru 9; 12, 13, 14

44" 45" (115cm)
fabric
without nap
all sizes



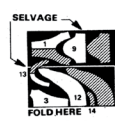
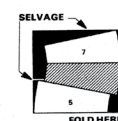
PIECE 3 IS CUT FROM BOTTOM LAYER

58" 60" (150cm)
fabric
without nap
sizes 6-8-10-12



FOLD HERE

sizes 14-16



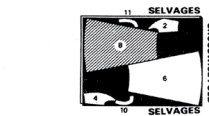
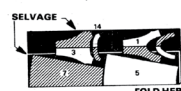
FOLD HERE

Bodice Lining
use pieces 1 thru 4

44" 45" (115cm)
fabric
without nap
all sizes

B DRESS
use pieces 1 thru 8; 10, 11, 13, 14

44" 45" (115cm)
fabric
without nap
sizes 6-8-10-12



FOLD HERE

SEWING INFORMATION

PIN AND FIT

Pin or baste seams, RIGHT SIDES TOGETHER, matching notches. Fit garment before stitching major seams.

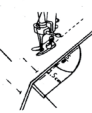
WITH A CONVENTIONAL MACHINE

STITCH using a 5/8" (1.5cm) seam allowance unless otherwise specified. Use guide line marking on throat plate of machine for accurate seam allowance. PRESS seams open unless otherwise stated. Clip if necessary to press seams flat.

WITH AN OVERLOCK (SERGER) MACHINE

SERGE cutting away the excess seam allowances (5/8" [1.5cm] unless otherwise specified). Press seams to one side. OVEREDGE to finish a raw edge, without cutting away fabric.

For FUSIBLE interfacing, follow manufacturer's directions.

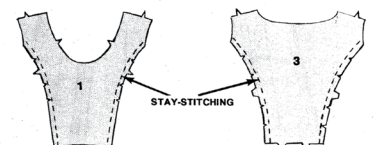


FABRIC KEY

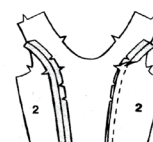
SEWING DIRECTIONS
DRESS

1. BODICE

Stay-stitch BODICE FRONT (1) and BODICE BACK (3) at sides by machine-stitching 1/2" (1.3cm) from raw edge. Clip to stitching.



Stitch each BODICE SIDE FRONT (2) to bodice front at side front edges.



Stitch each BODICE SIDE BACK (4) to bodice back at side back edges.

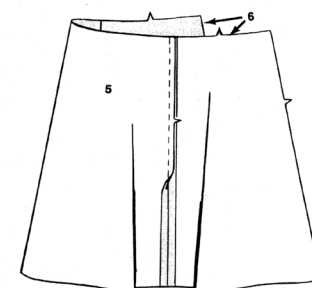


Stitch bodice back to bodice front at shoulders.
Stitch back to front at RIGHT side seam.

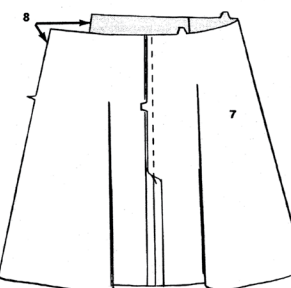
Stitch back to front at LEFT side seam, from upper edge to circle.

2. SKIRT

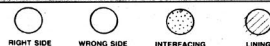
Stitch each SKIRT SIDE FRONT (6) to SKIRT FRONT (5) at side front edges.



Stitch each SKIRT SIDE BACK (8) to SKIRT BACK (7) at side back edges.



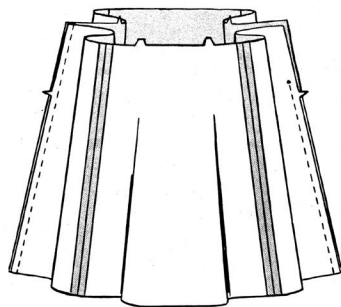
FABRIC KEY



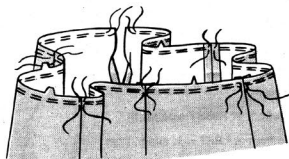
4322 - PAGE 2

Stitch back to front at RIGHT side seam.

Stitch back to front at LEFT side seam from lower edge to circle.



To gather upper edge of skirt, machine-baste 5/8" and 1/2" (1.5cm and 1.3cm) from raw edge, breaking basting at seams.



Pin skirt to bodice, RIGHT SIDES TOGETHER, matching notches, centers, seams and opening edges. Pull up bobbin threads and adjust gathers to fit. Hand-baste. Stitch.

Press seam allowances toward bodice.



3. ZIPPER

Press under 5/8" (1.5cm) on front edge of opening.

Press under 1/2" (1.3cm) on back edge of opening.

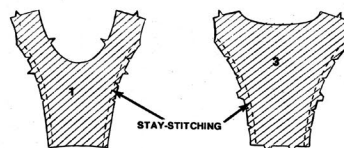


With RIGHT SIDES UP, pin back edge of opening over closed zipper, having edge close to zipper teeth and bottom-stop at circle. Hand-baste thru all thicknesses - fabric and tape. Stitch close to edge with a zipper foot.

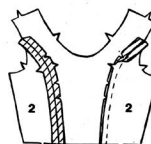


4. LINING

Stay-stitch side edges of BODICE FRONT (LINING) (1) and BODICE BACK (LINING) (3).



Stitch each SIDE FRONT (LINING) (2) to bodice front lining at side front edges.



Stitch each SIDE BACK (LINING) (4) to bodice back lining at side back edges.



Stitch back to front at shoulders.

Stitch back to front at LEFT side seam.

Stitch back to front at RIGHT side seam, from upper edge to circle.

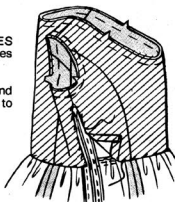
Press under 5/8" (1.5cm) on lower edge of lining.

Press under 5/8" (1.5cm) on back edge of side opening below circle.



Pin lining to bodice, WRONG SIDES TOGETHER. Baste neck and armhole edges together.

Hand-sew back and lower edge over seam and turn under front edge of lining and hand-sew to zipper tape.



5. SLEEVES - VIEW A

To ease cap of SLEEVE (9), machine-baste 5/8" and 1/2" (1.5cm and 1.3cm) from raw edge between notches.



Stitch sleeve seam.



Turn up a 1-1/4" (3.2cm) hem on lower edge of sleeve. Hand-baste close to fold. Press.

Open out hem and finish raw edge with a zigzag stitch or turn under 1/4" (6mm) and edge-stitch with a conventional machine or overedge using an overlock machine.

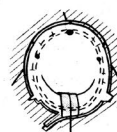
Replace hem and sew in place. Press.



With RIGHT SIDES TOGETHER, pin sleeve into armhole, matching notches, underarm seams, small circles and LARGE circle to shoulder seam. Pull up bobbin threads to ease in fullness. Hand-baste, adjusting ease evenly. Stitch.

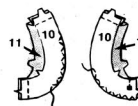
Stitch again 1/4" (6mm) from first stitching. Cut seam allowances close to second stitching below notches.

Turn seam allowances toward sleeve.



6. ARMHOLE FACINGS - VIEW B

Stitch (RIGHT) ARMHOLE FACING FRONT (10) to (RIGHT) ARMHOLE FACING BACK (11) at shoulders and side.

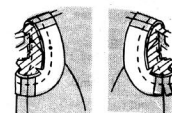


Stitch (LEFT) ARMHOLE FACING FRONT (10) to (LEFT) ARMHOLE FACING BACK (11) at shoulder and to square at side.

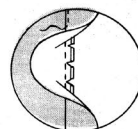
Finish curved UN-NOTCHED edge of facing with a zigzag stitch or turn under 1/4" (6mm) and edge-stitch with a conventional machine or overedge using an overlock machine (serger).

Pin facing to armhole, RIGHT SIDES TOGETHER, matching notches and seams. Stitch.

GRADE seam allowances. Clip curves.



Press seam allowances toward facing. UNDERSTITCH by stitching thru facing and seam allowances close to seam. (This prevents facing from rolling to outside.)



Turn facing to INSIDE. Press.

Catch-stitch facing to seams.



For LEFT facing, press under edges below square and hand-sew to lining.

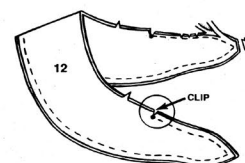


7. COLLAR

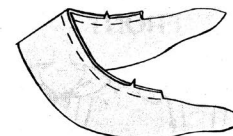
View A is shown.

Pin COLLAR FACING (12) to COLLAR (12), RIGHT SIDES TOGETHER. Stitch along UN-NOTCHED edges between small circles. Clip to circles.

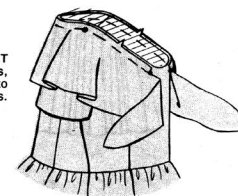
Cut corners diagonally. GRADE seam allowances by cutting to graduated widths. Clip curves.



Turn RIGHT SIDE OUT. Press. Baste raw edges together.

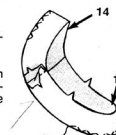


Pin collar to neck edge, RIGHT SIDES UP, matching notches, center backs, LARGE circles to shoulder seams and small circles. Baste.



Stitch FRONT NECK FACING (13) to BACK NECK FACING (14) at shoulders.

Finish UN-NOTCHED edge of facing with a zigzag stitch or turn under 1/4" (6mm) and edge-stitch with a conventional machine or overedge using an overlock machine (serger).

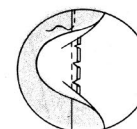


Pin facing to neck edge (over collar), RIGHT SIDES TOGETHER, matching notches, centers and seams. Stitch.

GRADE seam allowances by cutting to graduated widths and interfacing close to stitching. Clip curves.

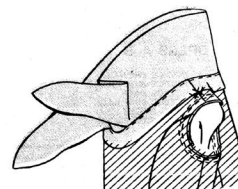


Press seam allowances toward facing. UNDERSTITCH by stitching thru facing and seam allowances close to seam. (This prevents facing from rolling to outside.)



Turn facing to INSIDE. Press.

Catch-stitch facing to seams.



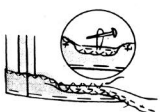
8. HEM

Mark hemline. Turn up hem along marking. Hand-baste close to fold. Press. Cut hem to an even width.

Open out hem. Machine-baste 1/4" (6mm) from raw edge. Replace hem and pull up bobbin thread to ease in fullness.

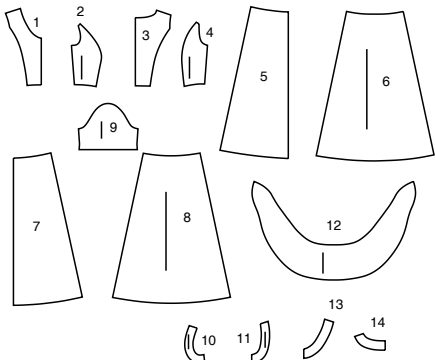
Open out hem again. Finish raw edge with a zigzag stitch or turn under 1/4" (6mm) and edge-stitch with a conventional machine or overedge using an overlock machine.

Replace hem and sew in place.



SUPPLEMENTAL CUTTING LAYOUTS

14 PATTERN PIECES



- 1 BODICE FRONT
- 2 BODICE SIDE FRONT
- 3 BODICE BACK
- 4 BODICE SIDE BACK
- 5 SKIRT FRONT
- 6 SKIRT SIDE FRONT
- 7 SKIRT BACK
- 8 SKIRT SIDE BACK
- 9 SLEEVE - A
- 10 ARMHOLE FACING FRONT - B
- 11 ARMHOLE FACING BACK - B
- 12 COLLAR
- 13 FRONT NECK FACING
- 14 BACK NECK FACING

PATTERN MARKINGS

GRAINLINE: Place on straight grain of fabric, parallel to selvage or fold.

FOLDLINE: Place line on fold of fabric.

BUTTONHOLE MARKING: Indicates exact length and placement of buttonholes.

BUTTON MARKING: Indicates button placement.

NOTCHES AND SYMBOLS: For matching seams and construction details.

Indicates the Bustline, Waistline, Hip and/or Biceps. Measurements refer to circumference of Finished Garment (Body Measurement + Wearing Ease + Design Ease). Adjust pattern if necessary. The measurement excludes pleats, tucks, darts and seam allowances.

SEAM ALLOWANCE: 5/8" (1.5cm) included unless otherwise indicated, but not printed on tissue.

ADJUST IF NECESSARY

Lengthen or Shorten at adjustment lines (==) or where indicated on pattern. If substantial length is added, you may need to purchase additional fabric.

TO SHORTEN: Crease along adjustment line. Make a fold half the amount needed. Tape in place.

TO LENGTHEN: Slash between adjustment lines. Spread amount as needed, keeping edges parallel. Tape over paper.

When Alteration lines are not on tissue, lengthen or shorten at lower edge.

CUTTING AND MARKING

★ Cut other pieces first, allowing enough fabric to cut this piece. Open fabric. For "Cut 1" pieces, cut piece once on single layer of fabric with piece face up on right side of fabric.

Pattern may have cutting lines for several sizes. Select the proper cutting line or pattern pieces for your size.

Before **CUTTING** place all pieces on fabric according to layout. Pin. (**Layouts show approximate position of pattern pieces; position may vary according to your pattern size.**) Cut **ACCURATELY**, cutting notches outward.

Before removing pattern, **TRANSFER MARKINGS** and lines of construction to Wrong Side of fabric, using the Pin and Chalk Pencil method or Tracing Paper and Dressmaker Wheel. Markings needed on right side of fabric should be thread traced.

NOTE: Broken-line boxes (at bl cl) in layouts represent pieces cut by measurements provided.

SHRINK FABRIC if not labeled pre-shrunk. Press.

CIRCLE LAYOUT for View, Size, Fabric Width.

Use **WITH NAP** layout for fabrics with one-way designs, nap, pile or surface shading. Because most knits have surface shading, a with nap layout is used.

For **DOUBLE THICKNESS (WITH FOLD)** - fold fabric with right sides together.

* **DOUBLE THICKNESS (WITHOUT FOLD)** - For fabrics with nap, fold fabric crosswise, right sides together. Mark as shown. Cut along crosswise fold of fabric (A). Turn upper layer 180° so arrows go in same direction and place over lower layer, right sides together (B).

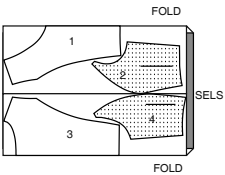
For **SINGLE THICKNESS** - place fabric right side up. (For Fur Pile fabrics, place pile side down.)

CUTTING LAYOUTS

VIEW A,B LINING

USE PIECES: 1 2 3 4

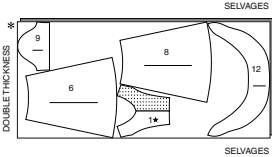
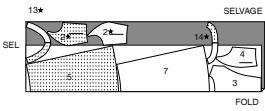
45" (115 CM)
WITH NAP
ALL SIZES



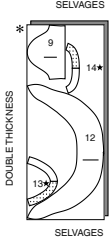
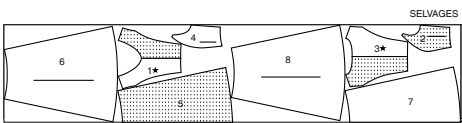
VIEW A DRESS

USE PIECES: 1 2 3 4 5 6 7 8 9 12 13 14

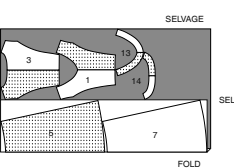
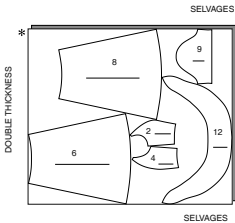
45" (115 CM) WITH NAP
ALL SIZES
CUT ONE OF PIECE 1



60" (150CM) WITH NAP
SIZES 6 8 10 12 14 16 18
CUT ONE OF PIECES 1 3 13 14



60" (150CM)
WITH NAP
SIZES 20 22 24

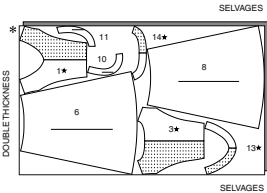
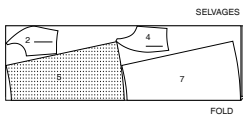


VIEW B DRESS

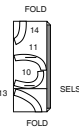
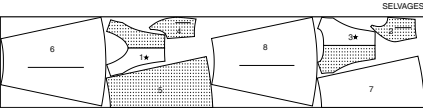
USE PIECES: 1 2 3 4 5 6 7 8 10 11 13 14

45" (115CM) WITH NAP
ALL SIZES

CUT ONE OF PIECES 1 3
13 14

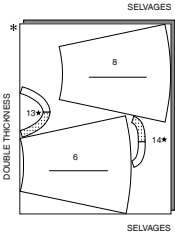
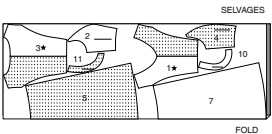


60" (150CM)
WITH NAP
SIZES 6 8 10 12 14 16 18
CUT ONE OF PIECES 1 3



60" (150CM)
WITH NAP
SIZES 20 22 24

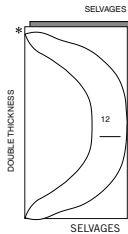
CUT ONE OF PIECES 1 3
13 14



CONTRAST (COLLAR)

USE PIECE: 12

45" TO 60" (115CM TO 150CM)
WITH NAP
ALL SIZES





Congrats!

You've completed your sewing adventure

SHARE YOUR LOOK



Post your pattern and tag us
[@simplicity_creative_group](#) and [#simplicitypatterns](#)
for a chance to be featured on our social media.

Look for more PDF patterns at [simplicity.com](https://www.simplicity.com)

Have a question or need help with your sewing project call us at
1-800-782-0323

McCall's
by **design**_{group}

McCall's ©2024 a division of IG Design Group Americas Inc. • Atlanta, GA 30342 USA www.thedesigngroup.com • All Rights Reserved. www.mccall.com • Made in the U.S.A. Fabriqué aux États-Unis.

To be used for individual private home use only and not for commercial or manufacturing purposes. • A usage privé seulement et non à des fins commerciales ou de production en série. • Para uso privado solamente, no se puede utilizar con propósitos de comercialización o de producción en serie.