

# McCall's

M8536



Designed and printed in USA

Average

### MEN'S SHORTS AND PANTS

**Suggested Fabrics:** Cotton Blends, Denim, Twill. **Interfacing:** Lightweight Fusible.

**Notions: A,B,C:** One 7" (18cm) zipper, one 3/4" (2cm) button.

Sizes	34	36	38	40	42	44	46	48	50	52
-------	----	----	----	----	----	----	----	----	----	----

#### BODY MEASUREMENTS: Select pattern size based on body measurements

<b>Chest</b>	34	36	38	40	42	44	46	48	50	52	Ins.
<b>Waist</b>	28	30	32	34	36	39	42	44	46	48	"
<b>Hip</b>	35	37	39	41	43	45	47	49	51	53	"

**Interfacing A,B,C 20"** 5/8 3/4 3/4 3/4 3/4 3/4 7/8 7/8 7/8 7/8 Yd.

**Shorts A** 45"\* 2 3/4 2 3/4 2 7/8 2 7/8 2 7/8 2 7/8 3 3 3 3/8 3 3/8 Yds.

60"\* 2 2 1/2 2 1/2 2 1/2 2 1/4 2 1/4 2 1/2 2 1/2 2 1/2 "

**Pants B** 45"\* 3 3 3/8 3 3/8 3 3/8 3 3/8 3 3/8 3 3/8 3 3/8 3 3/8 3 3/8 Yds.

60"\* 2 3/4 2 3/4 2 3/4 2 3/4 2 3/4 2 3/4 2 3/4 2 3/4 2 3/4 2 3/4 "

**Pants C** 45"\* 3 3/8 3 3/8 3 3/8 3 3/8 3 3/4 3 3/4 3 3/4 3 3/8 3 3/8 3 1/2 Yds.

60"\* 2 1/2 2 1/2 2 5/8 2 5/8 2 5/8 2 5/8 2 5/8 2 5/8 2 5/8 2 5/8 "

#### FINISHED GARMENT MEASUREMENTS (Includes Design and Wearing Ease)

**A,B,C Waist** 31 33 35 37 39 41 43 45 47 49 51 Ins.

**A,B,C Hip** 38 40 42 44 46 48 50 52 54 56 "

#### Width, each leg

**Shorts A** 28 29 30 31 32 33 34 35 36 37 37 Ins.

**Pants B,C** 31 32 33 34 35 36 37 38 39 40 "

#### Finished side length from waist

**Shorts A** 29 3/4 30 30 3/4 30 3/2 30 3/4 31 31 1/4 31 1/2 31 3/4 32 Ins.

**Pants B,C** 42 3/4 43 43 1/4 43 1/2 43 3/4 44 44 1/4 44 1/2 44 3/4 45 "

\*with nap \*\*without nap

Moins Facile

### SHORT ET PANTALONS POUR HOMMES

**Tissus Conseillés:** Cotonnades, Denim, Twill. **Entoilage:** Thermocollant léger.

**Mercerie: A,B,C:** 1 fermeture à glissière de 18cm, 1 bouton de 2cm.

Tailles	34	36	38	40	42	44	46	48	50	52
---------	----	----	----	----	----	----	----	----	----	----

#### MESURES DU CORPS: Choisissez la taille du patron basée sur les mesures du corps

**Poitrine** 87 92 97 102 107 112 117 122 127 132 cm

**Taille** 71 76 82 87 92 99 107 112 117 122 "

#### Hanches (23cm au-dessous de la taille)

89 94 99 104 109 115 119 124 128 135 cm

**Entoilage A,B,C 51cm** 0.6 0.6 0.7 0.7 0.7 0.7 0.8 0.8 0.8 0.8 m

**Short A** 115cm\* 2.5 2.5 2.5 2.6 2.6 2.6 2.7 2.7 2.9 2.9 m

150cm\* 1.8 1.9 1.9 1.9 1.9 2.1 2.1 2.2 2.3 2.3 "

**Pantalon B** 115cm\* 2.7 2.7 2.9 2.9 2.9 2.9 3.2 3.3 3.3 3.3 m

150cm\* 2.4 2.4 2.4 2.4 2.4 2.4 2.4 2.4 2.5 2.5 "

**Pantalon C** 115cm\* 2.9 2.9 2.9 2.9 2.9 3.0 3.0 3.0 3.1 3.2 m

150cm\* 2.3 2.3 2.3 2.3 2.4 2.4 2.4 2.4 2.4 2.4 "

#### MESURES DES VÊTEMENTS FINI (Motif et aisance de port compris)

**A,B,C Taille** 79 84 89 94 99 104 109 114 119 124 cm

**A,B,C Hanches** 97 102 107 112 117 122 127 132 137 142 "

#### Largeur, chaque jambe

**Short A** 71 74 76 79 81 84 86 89 91 94 cm

**Pantalon B,C** 79 81 84 86 89 91 94 97 99 102 "

#### Longueur finie – côté, taille à l'ourlet

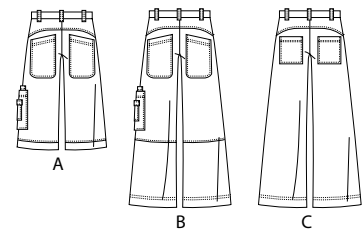
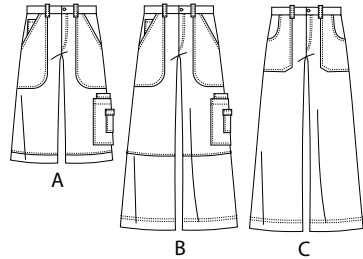
**Short A** 76 76 77 77 78 79 79 80 81 81 cm

**Pantalon B,C** 109 109 110 110 111 112 112 113 114 114 "

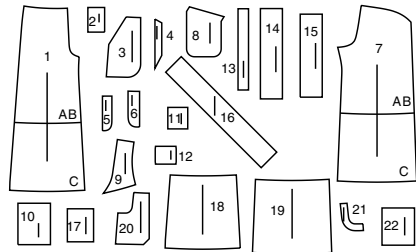
\*avec sens \*\*sans sens



C

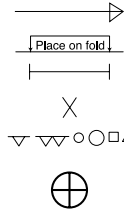


22 PATTERN PIECES



- 1 Front-A,B,C
- 2 Right Side Pocket-A,B
- 3 Pocket-A,B
- 4 Pocket Facing-A,B
- 5 Right Fly-A,B,C
- 6 Left Fly Facing-A,B,C
- 7 Back-A,B,C
- 8 Back Pocket-A,B
- 9 Yoke Back-A,B,C
- 10 Left Side Pocket-A,B
- 11 Lower Pocket-A,B
- 12 Lower Flap-A,B
- 13 Carrier-A,B,C
- 14 Right Waistband-A,B,C
- 15 Left Waistband-A,B,C
- 16 Leg Band-A
- 17 Middle Pocket-B
- 18 Lower Front-B
- 19 Lower Back-B
- 20 Pocket-C
- 21 Pocket Facing-C
- 22 Back Pocket-C

PATTERN MARKINGS



**GRAINLINE:** Place on straight grain of fabric, parallel to selvage or fold.  
**FOLDLINE:** Place line on fold of fabric.  
**BUTTONHOLE MARKING:** Indicates exact length and placement of buttonholes.  
**BUTTON MARKING:** Indicates button placement.  
**NOTCHES AND SYMBOLS:** For matching seams and construction details.  
 Indicates the Bustline, Waistline, Hip and/or Biceps. Measurements refer to circumference of Finished Garment (Body Measurement + Wearing Ease + Design Ease). Adjust pattern if necessary. The measurement excludes pleats, tucks, darts and seam allowances.  
**SEAM ALLOWANCE:** 5/8" (1.5cm) included unless otherwise indicated, but not printed on tissue.

ADJUST IF NECESSARY

Lengthen or Shorten at adjustment lines (==) or where indicated on pattern. If substantial length is added, you may need to purchase additional fabric.  
**TO SHORTEN:** Crease along adjustment line. Make a fold half the amount needed. Tape in place.  
**TO LENGTHEN:** Slash between adjustment lines. Spread amount as needed, keeping edges parallel. Tape over paper.  
 When Alteration lines are not on tissue, lengthen or shorten at lower edge.

CUTTING AND MARKING

**SHRINK FABRIC** if not labeled pre-shrunk. Press.

**CIRCLE LAYOUT** for View, Size, Fabric Width.

Use **WITH NAP** layout for fabrics with one-way designs, nap, pile or surface shading. Because most knits have surface shading, a with nap layout is used.

For **DOUBLE THICKNESS (WITH FOLD)** - fold fabric with right sides together.

**\* DOUBLE THICKNESS (WITHOUT FOLD)** - For fabrics with nap, fold fabric crosswise, right sides together. Mark as shown. Cut along crosswise fold of fabric (A). Turn upper layer 180° so arrows go in same direction and place over lower layer, right sides together (B).

For **SINGLE THICKNESS** - place fabric right side up. (For Fur Pile fabrics, place pile side down.)

★ Cut other pieces first, allowing enough fabric to cut this piece. Open fabric. For "Cut 1" pieces, cut piece once on single layer of fabric with piece face up on right side of fabric.

Pattern may have cutting lines for several sizes. Select the proper cutting line or pattern pieces for your size.

Before **CUTTING** place all pieces on fabric according to layout. **Pin.** (Layouts show approximate position of pattern pieces; position may vary according to your pattern size.) Cut **ACCURATELY**, cutting notches outward.

Before removing pattern, **TRANSFER MARKINGS** and lines of construction to Wrong Side of fabric, using the Pin and Chalk Pencil method or Tracing Paper and Dressmaker Wheel. Markings needed on right side of fabric should be thread traced.

**NOTE:** Broken-line boxes (a| b| c|) in layouts represent pieces cut by measurements provided.

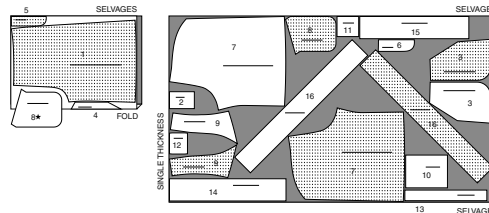
CUTTING LAYOUTS

RIGHT SIDE OF PATTERN	WRONG SIDE OF PATTERN	RIGHT SIDE OF FABRIC	WRONG SIDE OF FABRIC
-----------------------	-----------------------	----------------------	----------------------

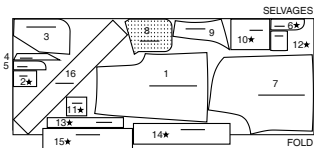
SHORTS A

USE PIECES: 1 2 3 4 5 6 7 8 9 10 11 12 13 14 15 16

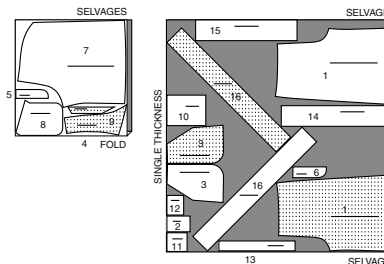
45" (115 CM)  
WITH NAP  
ALL SIZES



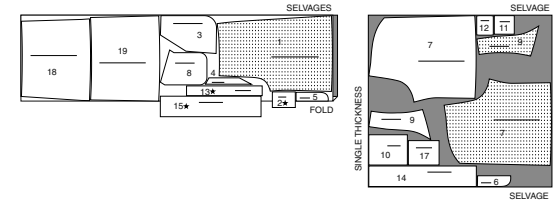
60" (150 CM)  
WITH NAP  
SIZES 34 36 38 40 42 44 46



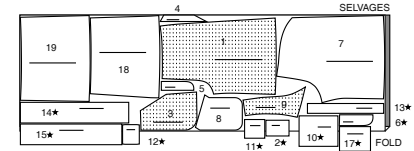
60" (150 CM)  
WITH NAP  
SIZES 48 50 52



45" (115 CM)  
WITH NAP  
SIZES 46 48 50 52



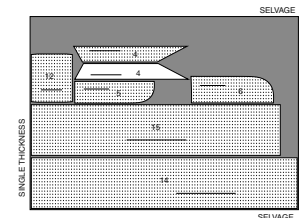
60" (150 CM)  
WITH NAP  
ALL SIZES



INTERFACING A,B

USE PIECES: 4 5 6 12 14 15

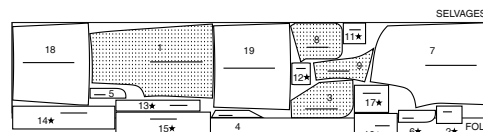
20" (51 CM)  
WITHOUT NAP  
ALL SIZES



PANTS B

USE PIECES: 1 2 3 4 5 6 7 8 9 10 11 12 13 14 15 17 18 19

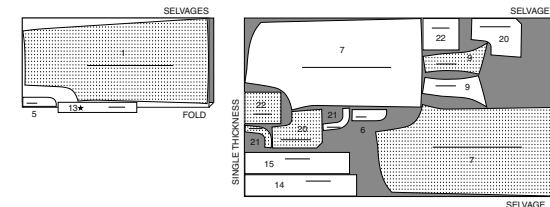
45" (115 CM)  
WITH NAP  
SIZES 34 36 38  
40 42 44



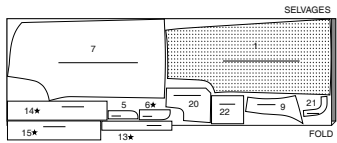
PANTS C

USE PIECES: 1 5 6 7 9 13 14 15 20 21 22

45" (115 CM)  
WITH NAP  
ALL SIZES



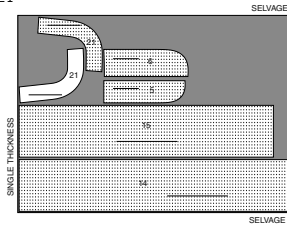
60" (150 CM)  
WITH NAP  
ALL SIZES



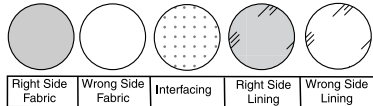
### INTERFACING C

USE PIECES: 5 6 14 15 21

20" (51 CM)  
WITHOUT NAP  
ALL SIZES

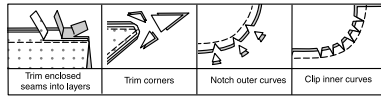


### SEWING INFORMATION FABRIC KEY



### SEAM ALLOWANCES

Use 5/8" (1.5cm) seam allowances unless otherwise indicated.



### PIN AND FIT

Pin or baste seams, **RIGHT SIDE TOGETHER**, matching notches. Fit garment before stitching major seams.

### PRESS

Press seam allowances flat; then open unless otherwise stated. Clip where necessary so they lie flat.

### GLOSSARY

Sewing methods in **BOLD TYPE** have Sewing Tutorial Video available. Scan **QR CODE** to watch videos:

**EDGESTITCH** - See [how to edgestitch](#) video.

**FINISH** - See [Seams: how to finish seam allowances](#) video.

**FLAT FELLED SEAM** - See [how to sew a flat felled seam](#) video.

**NARROW HEM** - See [sewing narrow hems](#) video.

**SLIPSTITCH** - See [how to slipstitch](#) video.

**STAYSTITCH** - See [how to do stay-stitching](#) video.

**TOPSTITCH** - See [how to topstitch](#) video.

**UNDERSTITCH** - see [how to understitch](#) video

SEWING TUTORIALS



Build your skills viewing short, easy-to-follow videos at [simplicity.com/sewingtutorials](http://simplicity.com/sewingtutorials)

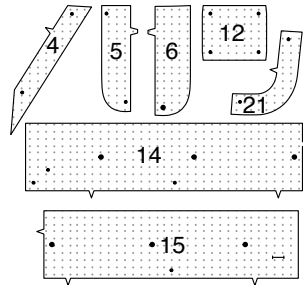
### PANTS A, B, C

**OPTIONAL SEAM FINISHING:** Seam allowances may be finished with a **FLAT FELLED SEAM** or after stitching seams, press seam allowances toward back or to one side and **EDGESTITCH** and **TOPSTITCH**.

**NOTE:** Under each sub-heading, the first View will be illustrated, unless otherwise indicated.

### INTERFACING

1. Trim corners of **INTERFACING**, as shown. Fuse interfacing to wrong side of each matching **FABRIC** section, following manufacturer's instructions.



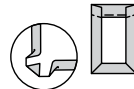
### FRONT

### VIEWS A, B:

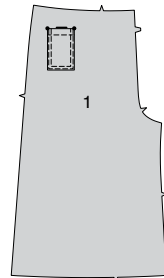
2. Make 1" (2.5cm) **NARROW HEM** at upper edge of **RIGHT SIDE POCKET (2)**.



3. Turn in seam allowances on sides and lower edge, diagonally folding corners. Press.



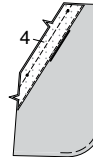
4. Pin pocket to right **FRONT (1)** section, matching large dots. **EDGESTITCH** and **TOPSTITCH** side and lower edges.



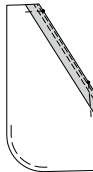
5. Stitch curved edges of **POCKET (3)** 3/8" (1cm) from raw edge, using long machine stitches, as shown.



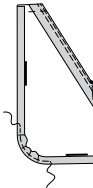
6. **FINISH** long unnotched edge of **POCKET FACING (4)**. With right sides together, pin pocket facing to upper side edge of pocket, matching small dots. Stitch. Trim.



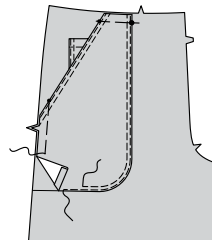
7. Turn facing to inside. Press. **EDGESTITCH** and **TOPSTITCH** finished edge. Baste upper and side edges.



8. Turn in seam allowances on front and lower edges; pull threads to ease in fullness on curves. Press.

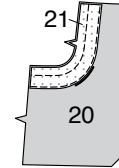


9. Pin pocket to front, matching symbols, placing pressed edges along pocket line. **EDGESTITCH** and **TOPSTITCH** pressed edges. Baste upper and side edges.

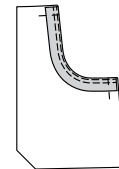


### VIEW C:

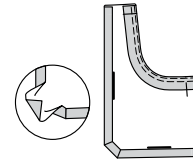
10. **FINISH** long unnotched edge of **POCKET FACING (21)**. With right sides together, pin pocket facing to upper side edge of **POCKET (20)**, matching small dots. Stitch. Trim.



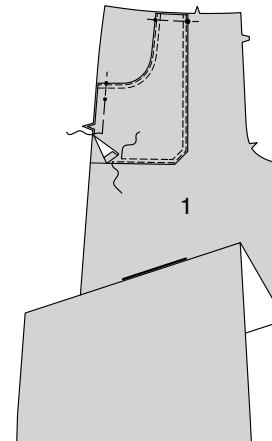
11. Turn facing to inside. Press. **EDGESTITCH** and **TOPSTITCH** finished edge. Baste upper and side edges.



12. Turn in seam allowances on front and lower edges, diagonally folding corners. Press.



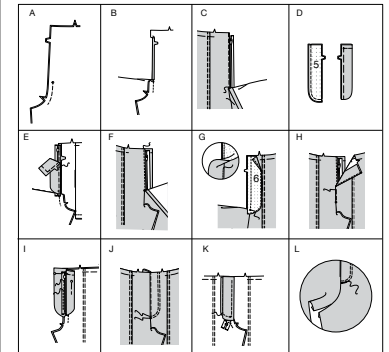
13. Pin pocket to front, matching symbols, placing pressed edges along pocket line. **EDGESTITCH** and **TOPSTITCH** pressed edges. Baste upper and side edges.



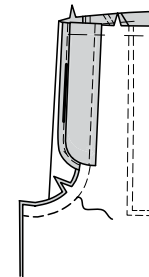
### ALL VIEWS:

#### 14. Construct fly front as follows:

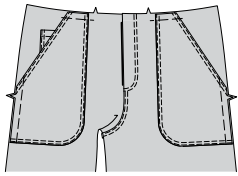
- A-**Stitch front sections together at center front between large dot and notch.
- B-**Turn in right front opening edge along foldline; press.
- C-**Place closed zipper (face up) under right front opening edge, having pressed edge close to zipper teeth and zipper stop at small dot. Using a zipper foot, baste close to pressed edge.
- D-**With right sides together, stitch **RIGHT FLY (5)** sections together in a 3/8" (1cm) seam along outer, unnotched edge, as shown. Trim. Turn. Press. Baste raw edges.
- E-**On inside, pin right fly to right front opening edge (over zipper), matching notches and small dots, having raw edges even. Baste along previous basting for zipper.
- F-**On outside, using a zipper foot, stitch close to pressed edge of front through all layers.
- G-****FINISH** outer edge of left **FLY FACING (6)**. Pin fly facing to left front opening edge, matching notches, and large dots. Stitch, ending at large dot. Trim. **UNDERSTITCH** fly facing. Turn facing to inside.
- H-**Lap left front over right, matching centers. Baste close to edge through all thicknesses.
- I-**Pin right fly out of the way. Open out fly facing. Pin remaining zipper tape to fly facing, keeping left front free. Using a zipper foot, stitch in place close to zipper teeth and along center of zipper tape.
- J-**Turn facing down. On outside, stitch left front along stitching line, keeping right fly free. Stitch again 1/4" (6mm) away inside previous stitching, as shown.
- K-**Turn right fly back in place. On inside, hand tack fly and facing together at lower edge, as shown. Trim away excess zipper tape even with lower edge of fly, if needed.
- L-**If desired, on outside, machine-stitch a bar tack across lower end of fly through all thicknesses.



15. Stitch remainder of crotch seam, connecting with previous stitching. Press seam allowances toward left front.



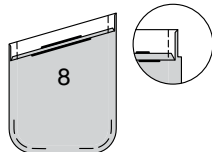
**16. EDGESTITCH and TOPSTITCH** left front seam below stitching.



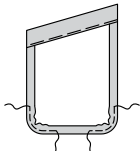
**BACK AND POCKETS**

**VIEWS A, B:**

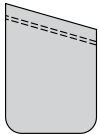
**17.** Stitch curved edges of **BACK POCKET (8)** 3/8" (1cm) from raw edge, using long machine stitches, as shown. Turn in 1/4" (6mm) on upper edge of each pocket. Press. Turn upper edge to outside along foldline; stitch ends. Trim.



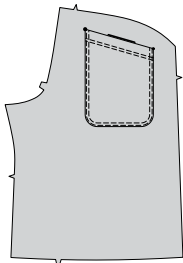
**18.** Turn upper edge of pocket to inside, turning in seam allowances on remaining edges; pull threads to ease in fullness on curves. Press. Baste close to inner pressed edge.



**19. TOPSTITCH** along basting. **OPTIONAL: TOPSTITCH** again 1/4" (6mm) above previous stitching.

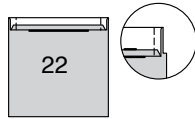


**20.** Pin pocket to **BACK (7)**, matching symbols. **EDGESTITCH and TOPSTITCH** side and lower edges, reinforcing upper ends.

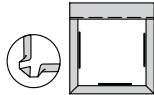


**VIEW C:**

**21.** Turn in 1/4" (6mm) on upper edge of each **BACK POCKET (22)**. Press. Turn upper edge to outside along foldline. Stitch ends. Trim.



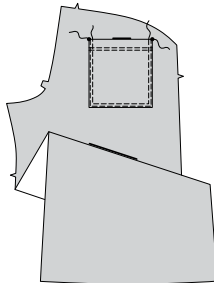
**22.** Turn upper edge of pocket to inside, turning in remaining seam allowances, diagonally folding corners. Press. Baste close to inner pressed edge.



**23. TOPSTITCH** along basting. **TOPSTITCH** again 1/4" (6mm) above previous stitching.

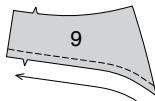


**24.** Pin pocket to back, matching symbols. **EDGESTITCH and TOPSTITCH** side and lower edges, reinforcing upper ends.

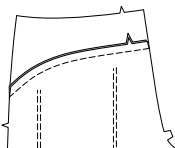


**ALL VIEWS:**

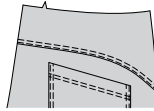
**25. STAYSTITCH** lower edge of **YOKE BACK (9)** in direction of arrow.



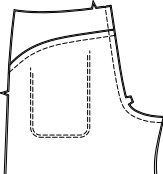
**26.** Pin yoke back to upper edge of back, clipping yoke back where necessary. Baste. Stitch. Press seam allowances toward yoke back.



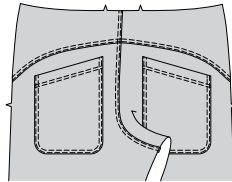
**27. EDGESTITCH and TOPSTITCH** yoke back seam.



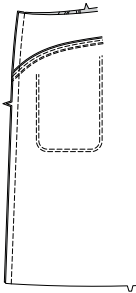
**28.** Stitch back sections together at center back. Press seam allowances toward left back.



**29. EDGESTITCH and TOPSTITCH** left back seam.

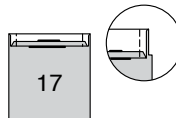


**30.** Stitch back to front at sides.

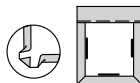


**VIEW B:**

**31.** Turn in 1/4" (6mm) on upper edge of **MIDDLE POCKET (17)**. Press. Turn upper edge to outside along foldline. Stitch ends. Trim.



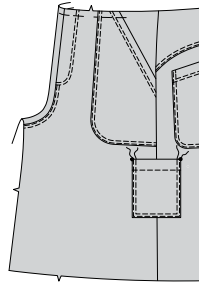
**32.** Turn upper edge of pocket to inside, turning in remaining seam allowances, diagonally folding corners. Press. Baste close to inner pressed edge.



**33. TOPSTITCH** along basting.

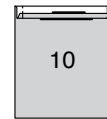


**34.** Pin pocket to left front and back, matching symbols. **EDGESTITCH and TOPSTITCH** side and lower edges, reinforcing upper ends.

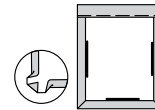


**VIEWS A, B:**

**35.** Turn in 1/4" (6mm) on upper edge of **LEFT SIDE POCKET (10)**. Press. Turn upper edge to outside along foldline. Stitch ends. Trim.



**36.** Turn upper edge of pocket to inside, turning in remaining seam allowances, diagonally folding corners. Press. Baste close to inner pressed edge.



**37. TOPSTITCH** along basting.



**38.** Turn in 1/4" (6mm) on upper edge of **LOWER POCKET (11)**. Press. Turn upper edge to outside along foldline. Stitch ends. Trim.



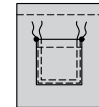
**39.** Turn upper edge of pocket to inside, turning in remaining seam allowances, diagonally folding corners. Press. Baste close to inner pressed edge.



**40. TOPSTITCH** along basting.



**41.** Pin lower pocket to left side pocket, matching symbols. **EDGESTITCH and TOPSTITCH** side and lower edges, reinforcing upper ends.



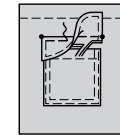
**42.** With **RIGHT** sides together, fold **LOWER FLAP (12)** along foldline, stitch ends. Trim.



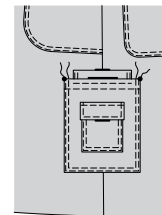
**43.** Turn. Press. Baste raw edges together. **TOPSTITCH** finished edges.



**44.** Pin lower flap to left side pocket, matching symbols, placing seamline along flap line. Stitch along seamline. Trim flap seam allowance to a scant 1/4" (6mm), being careful not to cut pocket. Turn flap down. Press. **TOPSTITCH** upper edge of flap.

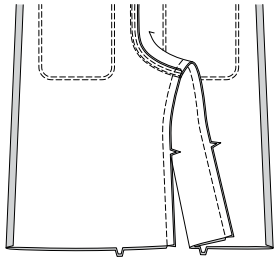


**45.** Pin left side pocket to left front and back, matching symbols. **EDGESTITCH and TOPSTITCH** side and lower edges, reinforcing upper ends.



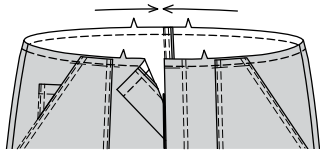
**ALL VIEWS:**

**46.** With right sides together, pin front to back at inner leg edges. Stitch in one continuous seam.

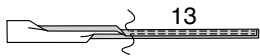


**CARRIERS, WAISTBAND AND FINISHING**

**47. STAYSTITCH** upper edge of garment in direction of arrows.



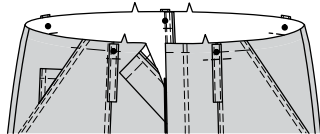
**48.** Turn in 1/4"(6mm) on long edges of CARRIERS (13); press. With WRONG sides together, fold carriers in half lengthwise, having edges even; press. **EDGESTITCH**, as shown.



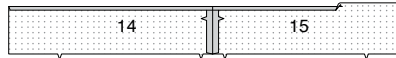
**49.** Cut carriers into five sections, each 3 7/8"(9.8cm) long. **NOTE:** Extra length has been allowed.



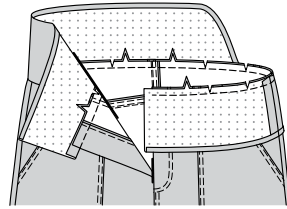
**50.** Pin carriers to upper edge of pants, centering one end over large dots, having raw edges even. Baste along waist seamline. Stitch carriers in place 1/2"(1.3cm) below seamline.



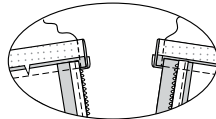
**51.** Stitch RIGHT WAISTBAND (14) to LEFT WAISTBAND (15) at center back. Turn in seam allowance on long unnotched edge of waistband. Press. Trim pressed seam allowance to 3/8"(1cm).



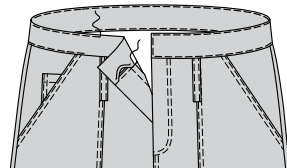
**52.** With right sides together, pin waistband to garment, matching centers, placing small dots at side seams, clipping garment where necessary. Baste. Stitch. Trim. Press seam allowances toward waistband.



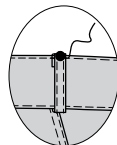
**53.** With right sides together, fold waistband along foldline. Stitch ends. Trim.



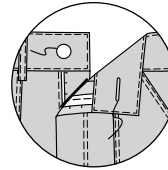
**54.** Turn waistband to inside. Press. **SLIPSTITCH** pressed edge over seam. **EDGESTITCH** all edges of waistband.



**55.** Turn in 1/4"(6mm) on remaining ends of carriers. Press. Turn up carriers over waistband, centering pressed end over large dots, having upper edges even. Baste. Stitch close to pressed edges, through all thicknesses.

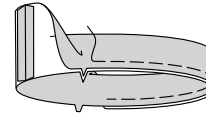


**56.** Make buttonhole in waistband at marking. Sew button to waistband at small dot.

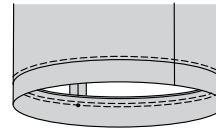


**VIEW A:**

**57.** Stitch ends of LEG BAND (16). With WRONG sides together, fold leg band in half lengthwise. Press. Baste raw edges.

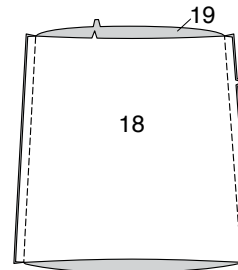


**58.** Pin leg band to lower edge of shorts, placing small dot at side seam, matching remaining seams. Stitch. Press seam up. **TOPSTITCH** upper seam, as shown.



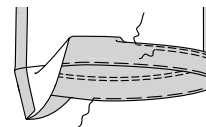
**VIEW B:**

**59.** Stitch LOWER FRONT (18) and LOWER BACK (19) together at side and inner leg seams, as shown.

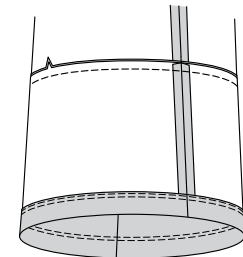


**60.** Turn up 2"(5cm) lower front and back hem. Baste close to fold. Turn in 1/4"(6mm) on raw edge. Baste hem in place close to upper edge. Press.

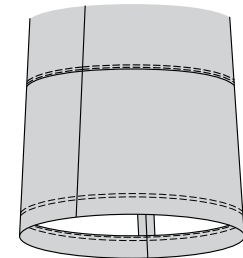
**TOPSTITCH** hem along upper basting. **TOPSTITCH** again 1/4"(6mm) below previous stitching.



**61.** Pin lower front and back to pants, matching seams. Stitch. Press seam up.

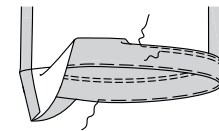


**62. EDGESTITCH** and **TOPSTITCH** upper seam, as shown.



**VIEW C:**

**63.** Turn up 2"(5cm) hem at lower edge of pants. Baste close to fold. Turn in 1/4"(6mm) on raw edge. Baste hem in place close to upper edge. Press. **TOPSTITCH** hem along upper basting. **TOPSTITCH** again 1/4"(6mm) below previous stitching.





# Congrats!

You've completed your sewing adventure

---

**SHARE  
YOUR** LOOK



Post your pattern and tag us  
[@simplicity\\_creative\\_group](#) and [#simplicitypatterns](#)  
for a chance to be featured on our social media.

Look for more PDF patterns at [simplicity.com](#)

Have a question or need help with your sewing project call us at  
1-800-782-0323

**McCall's**  
by **design**<sub>group</sub>

McCall's ©2024 a division of IG Design Group Americas Inc. • Atlanta, GA 30342 USA [www.thedesigngroup.com](#) • All Rights Reserved. [www.mccall.com](#) • Made in the U.S.A. Fabriqué aux États-Unis.

To be used for individual private home use only and not for commercial or manufacturing purposes. • A usage privé seulement et non à des fins commerciales ou de production en série. • Para uso privado solamente, no se puede utilizar con propósitos de comercialización o de producción en serie.