

McCall's

M8535



Designed and printed in USA



Scan QR code for a Sew-Along video tutorial.
Scannez le code QR pour un didacticiel vidéo de couture.

Average

MISSSES' AND WOMEN'S NIGHTGOWN IN TWO LENGTHS AND ROBE

Suggested Fabrics: Challis, Charmeuse, Crepe de Chine, Georgette. **Interfacing:** Lightweight Fusible.

Notions: **A, B:** 3" - 4" (8cm - 10cm) double-edge scalloped lace trim: **A:** 2½ yds. (2.1m) for sizes 10-18, 2½ yds. (2.5m) for sizes 20-28, **B:** 1½ yds. (1.40m) for sizes 10-18, 1½ yds. (1.9m) for sizes 20-28. **Also for B:** 7" (18cm) length of 7" (18cm) double-edge scalloped lace trim. **C:** 7" (18cm) double-edge scalloped lace trim 2½ yds. (2.1m) for sizes 10-18, 2½ yds. (2.3m) for sizes 20-28, ½ yd. (0.5m) of ¼" (6mm) seam binding or twill tape, eight ¼" (6mm) snaps.

Sizes	10	12	14	16	18	20W	22W	24W	26W	28W
European	36	38	40	42	44	46	48	50	52	54

BODY MEASUREMENTS: Select pattern size based on body measurement

Bust	32½	34	36	38	40	42	44	46	48	50	Ins.
Waist	25	26½	28	30	32	35	37	39	41½	44	"
Hip-9" below waist	34½	36	38	40	42	44	46	48	50	52	"
Back-neck to waist	16	16¼	16½	16¾	17	17¼	17½	17¾	17¾	17¾	"

Nightgown A 60" 1½ 1½ 1½ 1¼ 1¼ 1¼ 1½ 1½ 1½ 1½ 1½ Yds.

Interfacing A, B 20" ¾ ¾ ¾ ¾ ¾ ¾ ¾ ¾ ¾ ¾ ¾ Yd.

Nightgown B 60" 2½ 2½ 2½ 2½ 2¼ 2¼ 3 3 3½ 3½ 3½ Yds.

Robe C 60" 5½ 5½ 5½ 5½ 6 6½ 6½ 6½ 6¾ 6¾ 6¾ Yds.

Contrast (Belt) 45, 60" 1½ 1½ 1½ 1½ 1½ 1¼ 1¼ 1¼ 1¼ 1¼ 1¼ "

Interfacing 20" 1¾ 1¾ 1¾ 1¾ 1¾ 2 2 2 2 2 2 "

FINISHED GARMENT MEASUREMENTS (Includes Design and Wearing Ease)

A, B Bust	36	37½	39½	41½	43½	44	46	48	50	52	Ins.
C Bust	36½	38	40	42	44	44½	46½	48½	50½	52½	"
A, B Waist	32½	34	36	38	40	40½	42½	44½	46½	48½	"
C Waist	27	28½	30½	32½	34½	35½	37½	39½	41½	43½	"
A, B Hip	39	40½	42½	44½	46½	47½	49½	51½	53½	55½	"
Width, lower edge											
Nightgown A	42	43½	45½	47½	49½	52½	54½	56½	58½	60½	Ins.
Finished back length from base of neck											
Nightgown A	31	31¼	31½	31¾	32	33½	33¾	34	34¼	34½	Ins.
Nightgown B	48	48¼	48½	48¾	49	47¾	48	48¼	48½	48¾	"
Robe C	57	57¼	57½	57¾	58	59¼	59½	59¾	60	60¼	"

*withnap **without nap

Moins Facile

CHEMISE DE NUIT EN DEUX LONGUEURS ET ROBE DE CHAMBRE POUR JEUNES FEMMES ET FEMMES

Tissus Conseillés: Challis, Charmeuse, Crêpe de chine, Crêpe georgette. **Entoilage:** Thermocollant léger.

Mercerie: **A, B:** Galon de dentelle festonnée à double bord de 8cm - 10cm: **A:** 2.1m pour tailles 10 - 18, 2.5m pour tailles 20W - 28W, **B:** 1.4m pour tailles 10 - 18, 1.9m pour tailles 20W - 28W. **Aussi pour B:** 18cm de longueur de dentelle festonnée à double bord de 18cm. **C:** Galon de dentelle festonnée à double bord de 18cm: 2.1m pour tailles 10 - 18, 2.3m pour tailles 20W - 28W, 0.5m de ruban d'extra-fort ou de talonnette de coton de 6mm, 8 boutons-pressions de 6mm.

Tailles	10	12	14	16	18	20W	22W	24W	26W	28W
Françaises	38	40	42	44	46	48	50	52	54	56
Européen	36	38	40	42	44	46	48	50	52	54

MESURES DU CORPS: Choisissez la taille du patron basée sur les mesures du corps

Poitrine	83	87	92	97	102	107	112	117	122	127	cm
Taille	64	67	71	76	81	89	94	99	105	112	"

Hanches (23cm au-dessous de la taille)

	88	92	97	102	107	112	117	122	127	132	cm
--	----	----	----	-----	-----	-----	-----	-----	-----	-----	----

Dos du cou à la taille 40.5 41.5 42 42.5 43 44 44 44.5 45 45 "

Chemise de nuit A 150cm* 1.0 1.0 1.0 1.0 1.1 1.3 1.4 1.4 1.4 1.5 m

Entoilage A, B 51cm 0.6 0.6 0.7 0.7 0.7 0.7 0.7 0.7 0.8 0.8 m

Chemise de nuit B 150cm* 2.3 2.3 2.4 2.4 2.5 2.6 2.6 2.7 2.9 3.0 m

Robe de chambre C 150cm* 5.1 5.3 5.3 5.4 5.5 5.9 6.1 6.1 6.1 6.2 m

Contraste (Ceinture) 115, 150cm* 1.0 1.0 1.0 1.0 1.0 1.0 1.1 1.1 1.1 1.1 "

Entoilage 51cm 1.6 1.6 1.6 1.6 1.7 1.7 1.7 1.8 1.8 1.8 "

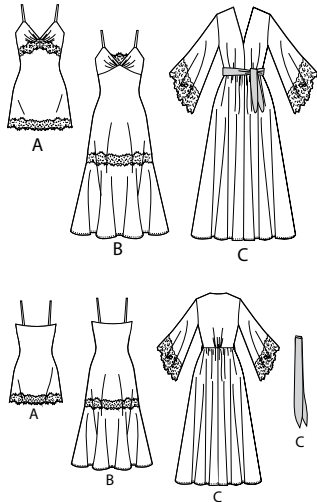
MESURES DES VÊTEMENTS FINI (Motif et aisance de port compris)

A, B Poitrine	91	95	100	105	110	112	117	122	127	132	cm
C Poitrine	93	97	102	107	112	113	118	123	128	133	"
A, B Taille	83	86	91	97	102	103	108	113	118	123	"
C Taille	69	72	77	83	88	90	95	100	105	110	"
A, B Hanches	99	103	108	113	118	121	126	131	136	141	"
Largeur à l'ourlet											
Chemise de Nuit A	107	110	116	121	126	133	138	144	149	154	cm
Longueur finie - dos, votre nuque à l'ourlet											
Chemise de Nuit A	79	79	80	81	81	85	86	86	87	88	cm
Chemise de Nuit B	122	123	123	124	124	121	122	123	123	124	"
Robe de chambre C	145	145	146	147	147	150	151	152	152	153	"

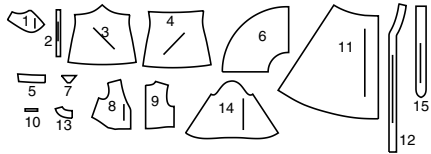
*avec sens **sans sens



C



15 PATTERN PIECES



- 1 Bodice Front-A,B
- 2 Shoulder Strap-A,B
- 3 Front-A,B
- 4 Back-A,B
- 5 Back Facing-A,B
- 6 Flounce-B
- 7 Inset-B
- 8 Bodice Front-C
- 9 Bodice Back-C
- 10 Stay- C
- 11 Skirt Front and Back-C
- 12 Front Facing-C
- 13 Back Facing-C
- 14 Sleeve-C
- 15 Tie Belt-C

PATTERN MARKINGS

GRAINLINE: Place on straight grain of fabric, parallel to selvage or fold.

FOLDLINE: Place line on fold of fabric.

BUTTONHOLE MARKING: Indicates exact length and placement of buttonholes.

BUTTON MARKING: Indicates button placement.

NOTCHES AND SYMBOLS: For matching seams and construction details.

Indicates the Bustline, Waistline, Hip and/or Biceps. Measurements refer to circumference of Finished Garment (Body Measurement + Wearing Ease + Design Ease). Adjust pattern if necessary. The measurement excludes pleats, tucks, darts and seam allowances.

SEAM ALLOWANCE: 5/8" (1.5cm) included unless otherwise indicated, but not printed on tissue.

ADJUST IF NECESSARY

Lengthen or Shorten at adjustment lines (==) or where indicated on pattern. If substantial length is added, you may need to purchase additional fabric.

TO SHORTEN: Crease along adjustment line. Make a fold half the amount needed. Tape in place.

TO LENGTHEN: Slash between adjustment lines. Spread amount as needed, keeping edges parallel. Tape over paper.

When Alteration lines are not on tissue, lengthen or shorten at lower edge.

CUTTING AND MARKING

SHRINK FABRIC if not labeled pre-shrunk. Press.

CIRCLE LAYOUT for View, Size, Fabric Width.

Use **WITH NAP** layout for fabrics with one-way designs, nap, pile or surface shading. Because most knits have surface shading, a with nap layout is used.

For **DOUBLE THICKNESS (WITH FOLD)** - fold fabric with right sides together.

*** DOUBLE THICKNESS (WITHOUT FOLD)** - For fabrics with nap, fold fabric crosswise, right sides together. Mark as shown. Cut along crosswise fold of fabric (A). Turn upper layer 180° so arrows go in same direction and place over lower layer, right sides together (B).

For **SINGLE THICKNESS** - place fabric right side up. (For Fur Pile fabrics, place pile side down.)

★ Cut other pieces first, allowing enough fabric to cut this piece. Open fabric. For "Cut 1" pieces, cut piece once on single layer of fabric with piece face up on right side of fabric.

Pattern may have cutting lines for several sizes. Select the proper cutting line or pattern pieces for your size.

Before **CUTTING** place all pieces on fabric according to layout. Pin. (Layouts show approximate position of pattern pieces; position may vary according to your pattern size.) Cut **ACCURATELY**, cutting notches outward.

Before removing pattern, **TRANSFER MARKINGS** and lines of construction to Wrong Side of fabric, using the Pin and Chalk Pencil method or Tracing Paper and Dressmaker Wheel. Markings needed on right side of fabric should be thread traced.

NOTE: Broken-line boxes (a! b! c!) in layouts represent pieces cut by measurements provided.

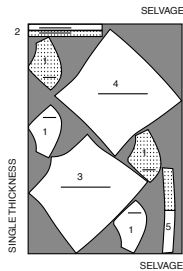
CUTTING LAYOUTS

RIGHT SIDE OF PATTERN	WRONG SIDE OF PATTERN	RIGHT SIDE OF FABRIC	WRONG SIDE OF FABRIC
-----------------------	-----------------------	----------------------	----------------------

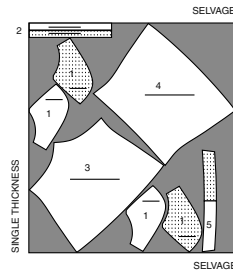
NIGHTGOWN A

USE PIECES: 1 2 3 4 5

60" (150 CM) WITH NAP
SIZES 10 12 14 16 18



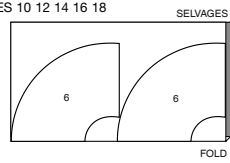
60" (150 CM) WITH NAP
SIZES 20W 22W 24W 26W 28W



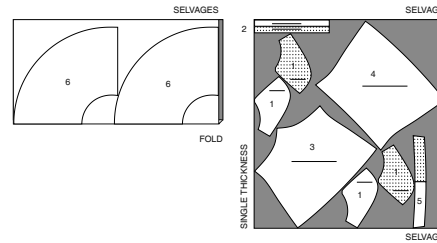
NIGHTGOWN B

USE PIECES: 1 2 3 4 5 6

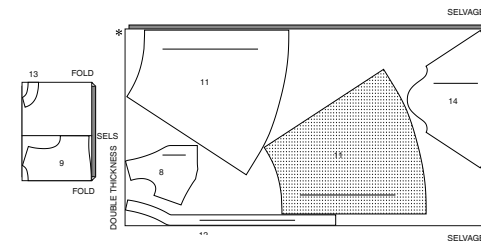
60" (150 CM) WITH NAP
SIZES 10 12 14 16 18



60" (150 CM) WITH NAP
SIZES 20W 22W 24W 26W 28W



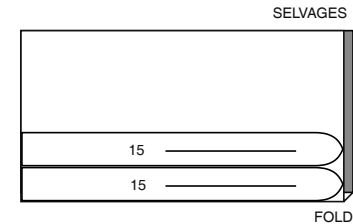
60" (150 CM) WITH NAP
SIZES 20W 22W 24W 26W 28W



CONTRAST C

USE PIECE 15

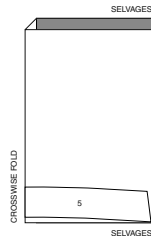
45", 60" (115CM, 150 CM) WITH NAP
ALL SIZES



INTERFACING A,B

USE PIECE 5

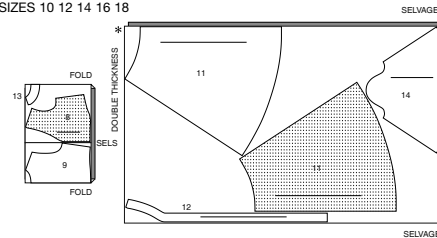
20" (51 CM) ALL SIZES



ROBE C

USE PIECES 8 9 11 12 13 14

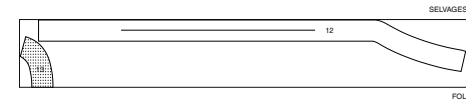
60" (150 CM) WITH NAP
SIZES 10 12 14 16 18



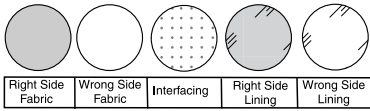
INTERFACING C

USE PIECE 12 13

20" (51 CM) ALL SIZES

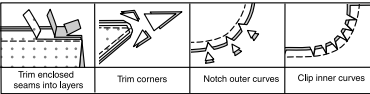


SEWING INFORMATION
FABRIC KEY



SEAM ALLOWANCES

Use 1/4" (6mm) seam allowances unless otherwise indicated.



PIN AND FIT

Pin or baste seams, **RIGHT SIDE TOGETHER**, matching notches. Fit garment before stitching major seams.

PRESS

Press seam allowances flat; then open unless otherwise stated. Clip where necessary so they lie flat.

GLOSSARY

Sewing methods in **BOLD TYPE** have Sewing Tutorial Video available. Scan **QR CODE** to watch videos:

EASE/GATHER – See **Gathering**: “sewing two row gathers” video.

NARROW HEM – See **Hems**: “sewing narrow hems” video.

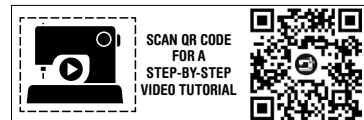
SET IN SLEEVE – See **Armholes/Sleeves**: “sewing a set in sleeve” video.

SLIPSTITCH – See **Hand Stitching**: “how to slip stitch” video.

STITCH IN THE DITCH – See **Machine Stitches**: “how to stitch in the ditch” video.

TRIM SEAM – See **Seams**: “how to trim, clip and layer seams” video.

UNDERSTITCH – see **Machine Stitches**: “how to understitch” video.



PATTERN PIECES WILL BE IDENTIFIED BY NUMBERS THE FIRST TIME THEY ARE USED.

STITCH 5/8" (1.5CM) SEAMS WITH RIGHT SIDES TOGETHER UNLESS OTHERWISE STATED.

NIGHTGOWN A, B

CUTTING LACE TRIM

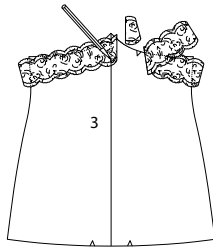
NOTE: For the lace sections, study the pattern pieces.

How do you want the scalloped edge(s) to look at the center front, when finished?

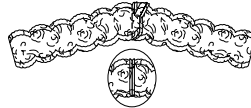
These questions can only be answered by you, as much depends on the length of the scallop on the lace you chose and varies with the size of the garment you make.

- FOR VIEW A** – To make upper front lace trim, place 3"- 4" (8cm-10cm) wide lace trim over **FRONT (3)** pattern piece, having inner points of scallop 1/2" (1.3cm) below upper edge of pattern and placed on center front marking. Extend lace beyond side edges of pattern piece, and at least 5/8" (1.5cm) beyond centerline, as shown.

Transfer center front marking to lace pieces.



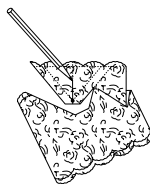
- Stitch lace sections together at center front. Stitch again over previous stitching. Trim seam to 1/8" (3mm). Press seam open. (Side edges of lace will be trimmed after the lace is applied.)



- FOR VIEW B** – Place 7" (18cm) wide lace trim over **INSET (7)** pattern piece, having inner points of scallop even with the upper edge of pattern and centered, as shown.

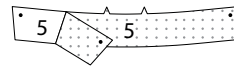


- Cut along remaining edges of pattern. Transfer markings.



INTERFACING

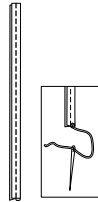
- Pin interfacing to **WRONG** side of **BACK FACING (5)**. Fuse in place following manufacturer's directions.



SHOULDER STRAP

- Fold **SHOULDER STRAP (2)** in half, lengthwise, with **RIGHT** sides together. Stitch 3/8" (1cm) from long edges, stretching strap while stitching.

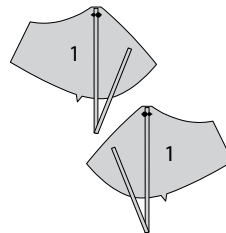
With a needle, attach a strong thread to one end of strap.



- Draw needle eye forward, through fold, turning strap **RIGHT** side out.

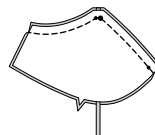


- On **OUTSIDE**, baste straps to **BODICE FRONT (1)**, matching small and large dots, having raw edges even.

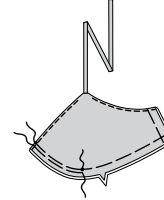


FOR VIEW A BODICE

- With **RIGHT** sides together and raw edges even, pin bodice front facing sections to bodice front sections. Stitch front, strap, and armhole edges. **TRIM SEAM.**

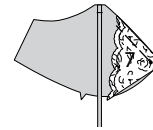


- With **RIGHT** sides together and raw edges even, pin remaining bodice front facing to bodice front (over inset). Stitch front, strap, and armhole edges. **TRIM SEAM.**

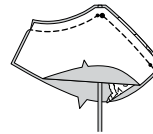


FOR VIEW B BODICE AND INSET

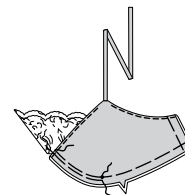
- With **RIGHT** sides together and raw edges even, pin **INSET (7)** to one bodice front section, matching small dots. Baste.



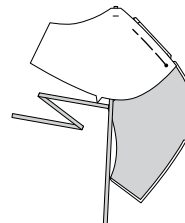
- With **RIGHT** sides together and raw edges even, pin bodice front facing to bodice front (over inset). Stitch front, strap, and armhole edges. **TRIM SEAM.**



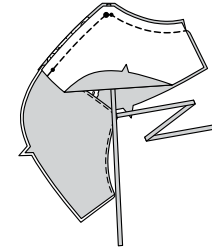
- UNDERSTITCH** neck and armhole edges as far as possible. Turn bodice; press, pressing out the inset.



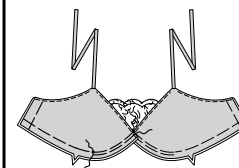
- With **RIGHT** sides together and raw edges even, pin remaining front edge of inset to remaining bodice front section, matching small dots. Baste.



- With **RIGHT** sides together and raw edges even, pin remaining bodice front facing to bodice front (over inset). Stitch front, strap, and armhole edges. **TRIM SEAM.**

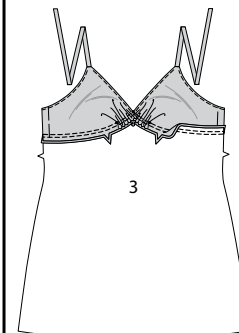


- UNDERSTITCH** neck and armhole edges as far as possible. Turn bodice; press, pressing out the inset. Baste raw edges together. **GATHER** lower edge of bodice between the front edge and the notch.

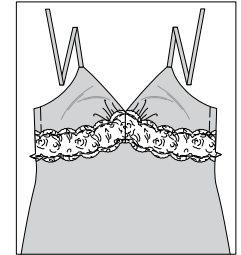


CONTINUE AS FOLLOWS FOR BOTH VIEWS

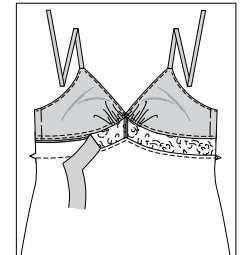
- With **RIGHT** sides together and raw edges even, pin bodice to **FRONT (3)**, matching centers, small dots, and notches, pulling up gathering stitches to fit. Stitch. Stitch again 1/8" (3mm) from first stitching within the seam allowance. Press seam toward front. **TRIM SEAM.** Finish seam with zig-zag or overlock stitch.



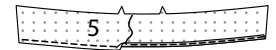
- FOR VIEW A** – On **OUTSIDE**, pin upper front lace trim to bodice front with inner points of scallop 1/8" (3mm) above seamline, matching centers and side edges. Stitch along seamline over previous stitching, and along lower edge of trim 1/8" (3mm) above inner points of scallop.



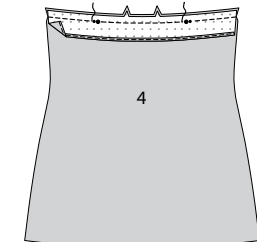
- On **INSIDE** of front, pull fabric layer away from upper front lace trim, and make a snip in fabric, being careful not to catch in lace trim. Cut fabric 1/4" (6mm) away from seamline, and lower trim stitching. Finish raw edge with zig-zag or overlock stitch.



- FOR ALL VIEWS** – Stitch 1/4" (6mm) from lower edge of **BACK FACING (5)**. Turn under lower edge along back stitching and stitch close to fold.

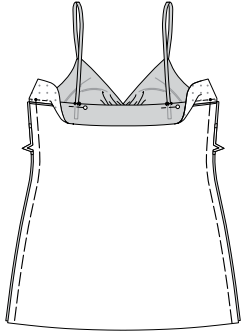


- On **OUTSIDE**, pin back facing to back, matching centers, and notches. Stitch upper edge, leaving openings, between the inner small and large dots. **TRIM SEAM.**

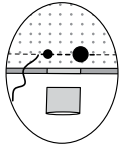


22. With RIGHT sides together and raw edges even, pin front to BACK at side edges, matching small dots and notches. Baste.

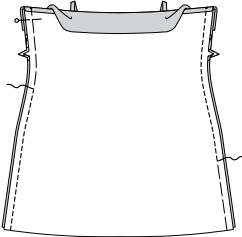
Turn facing to INSIDE; press. Try on nightgown. Thread back ends of straps through openings. Adjust to fit, comfortably; pin.



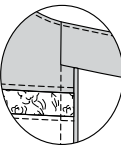
23. Open out the facing and stitch openings closed. UNDERSTITCH the facing.



24. On OUTSIDE, pin back facing to back at side edges (over front bodice). Stitch side edges through all thicknesses.

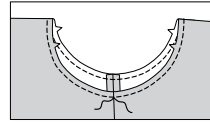
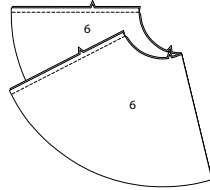


25. Turn facing to INSIDE; press, pressing seam toward back.

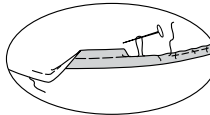


FLOUNCE B

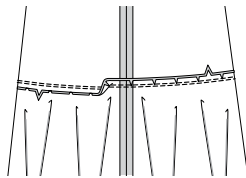
26. With RIGHT sides together and raw edges even, stitch two FLOUNCE (6) sections together at side edges. Machine-stitch upper edge of flounce 1/2" (1.3cm) from raw edge.



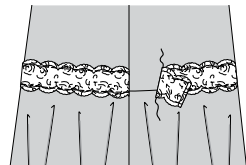
27. Machine-baste 1/4" (6mm) from lower edge of flounce. Turn up lower edge along hem allowance; press. Turn under raw edge to meet crease, pulling up stitching to ease in fullness; press. Stitch close to inner pressed edge.



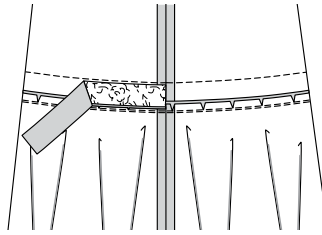
28. With RIGHT sides together and raw edges even, pin upper edge of flounce to lower edge of front and back, matching centers, seams, and notches, clipping to stitching as necessary. Stitch. Stitch again 1/8" (3mm) from first stitching within the seam allowance. Press seam toward front and back. TRIM SEAM. Finish seam with zig-zag or overlock stitch.



29. On OUTSIDE, pin 3" - 4" (8cm-10cm) wide lace trim to flounce with inner points of scallop on lower edge 1/8" (3mm) below seamline, turning under and lapping ends toward back at one side seam. Stitch along seamline over previous stitching, and along upper edge of trim 1/8" (3mm) below inner points of scallop. SLIPSTITCH ends of lace together, being careful not to catch in fabric.

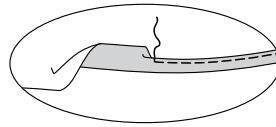


30. On INSIDE of front and back, pull fabric layer away from lace trim, and make a snip in fabric, being careful not to catch in lace. Cut fabric 1/4" (6mm) away from seamline, and upper trim stitching. Finish raw edge with zig-zag or overlock stitch.

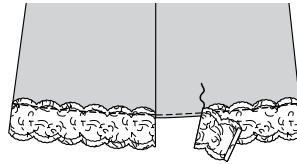


FINISHING

31. FOR VIEW A - NARROW HEM lower edge of nightgown.



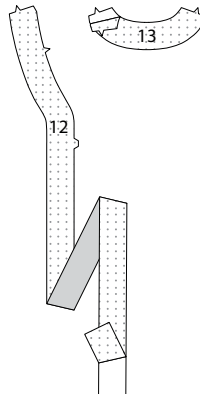
32. Cut a piece of 3" - 4" (8cm-10cm) wide lace trim, the length of the lower edge of gown, plus 1" (2.5cm). Pin upper edge of lace to lower edge of gown with inner points of scallop 1/8" (3mm) above hem stitching, turning under end and lapping at one side seam. Stitch in place over hem stitching. SLIPSTITCH ends of lace together.



ROBE AND SASH C

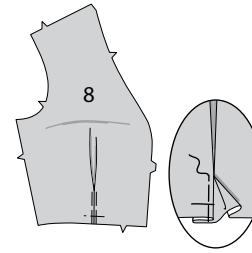
INTERFACING

1. Pin interfacing to WRONG side of FRONT FACING (12) and BACK FACING (13). Fuse in place following manufacturer's directions.

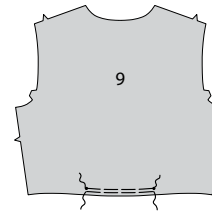


BODICE

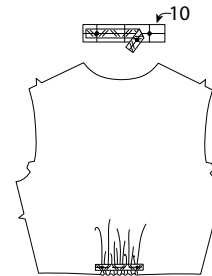
2. To make pleats on BODICE FRONT (8), on OUTSIDE, fold along solid lines. Bring folds to broken lines; pin. Baste across raw edge.



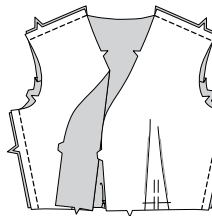
3. GATHER lower edge of BODICE BACK (9) between the small dots.



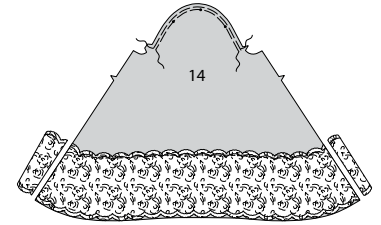
4. Cut a piece of twill tape or seam binding the length of STAY (10). Transfer markings. On INSIDE, pin stay to lower edge of bodice back, matching small dots, pulling up gathering stitches to fit. Distribute gathers evenly. Baste in place along seamline.



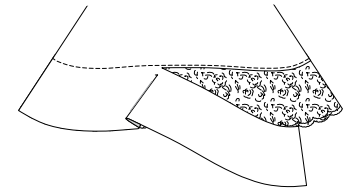
5. With RIGHT sides together and raw edges even, pin bodice front to bodice back at shoulder and side edges. Stitch.



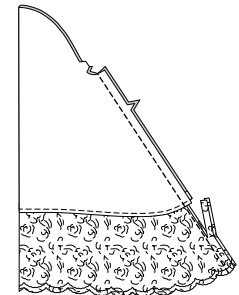
6. EASE upper edge of SLEEVE (14) between the notches. On OUTSIDE, pin 7" (18cm) wide lace trim to lower edge of sleeve having lower edges even. Stitch lace to sleeve 1/8" (3mm) below inner points of upper scalloped edge. Trim lace even with underarm edges of sleeve.



7. On INSIDE, keeping lace free, trim lower edge of sleeve 1/4" (6mm) from stitching and finish raw edge with a zig-zag or overlock stitch.

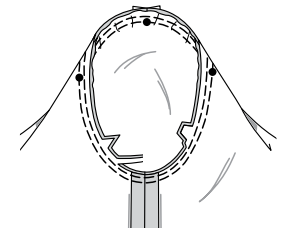


8. Stitch underarm edges together. Press seam open. Trim seam allowance of lace to 1/8" (3mm).



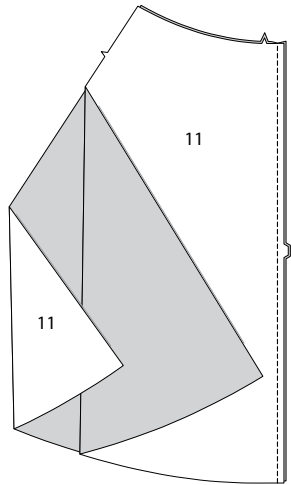
9. To SET IN SLEEVE, turn sleeve RIGHT side out. Hold bodice WRONG side out with armhole toward you. With RIGHT sides together, pin sleeve to armhole edge with center small dot at shoulder seam, matching underarm seams, notches and remaining small dots. Pull up ease stitches to fit.

To distribute fullness evenly, slide fabric along bobbin threads until there are no puckers or tucks on the seam line. Baste. Stitch. Stitch again 1/8" (3mm) from first stitching. Trim seam below notches close to stitching. Press only the seam allowance, shrinking out fullness.

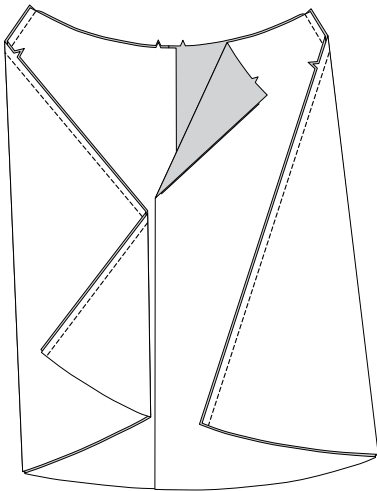


SKIRT

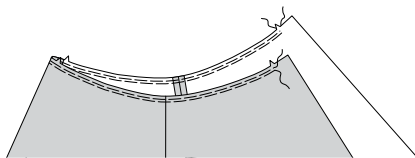
10. Stitch center back edges of SKIRT FRONT AND BACK (11).



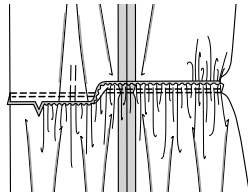
11. Stitch skirt front to skirt back at side edges.



12. GATHER upper edge of skirt between the notches.

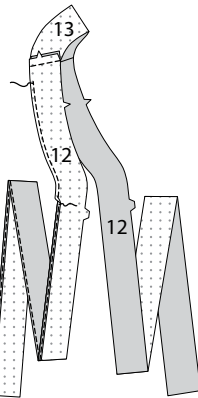


13. With RIGHT sides together and raw edges even, pin lower edge of bodice to upper edge of skirt, matching centers, seams, and notches, pulling up gathering stitches to fit. Baste. Stitch. **TRIM SEAM.** Press seam toward bodice.

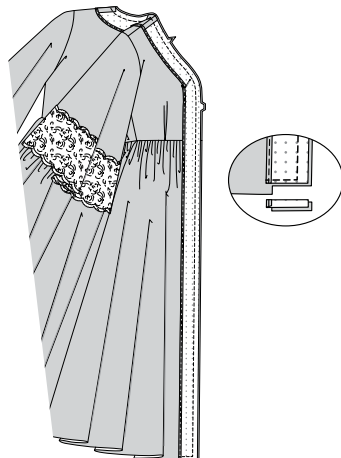


FACING

14. Stitch FRONT FACING (12) to BACK FACING (13) at shoulder edges. To finish inner edge, stitch 1/4" (6mm) from raw edge and finish by turning in along stitching and stitching close to fold.

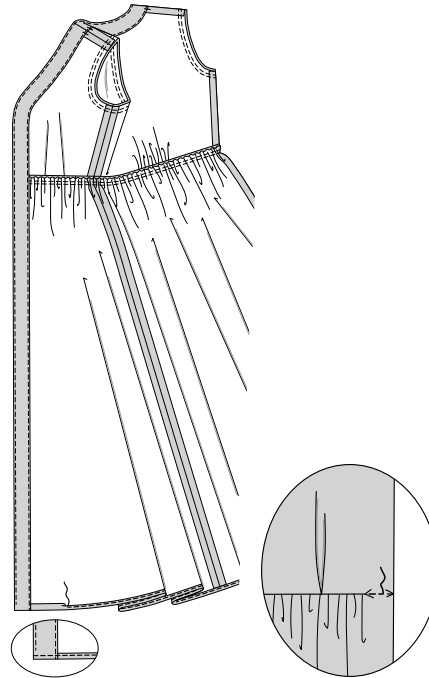


15. On OUTSIDE, pin facing to robe, matching centers and notches. Stitch front, neck, and lower edges. **TRIM SEAM.** Trim facing close to stitching. Trim robe to within 5/8" (1.5cm) of inner edge of facing.



16. **UNDERSTITCH** the facing. Turn facing to INSIDE; press, pressing up hem along marking. **NARROW HEM** robe between opening edges.

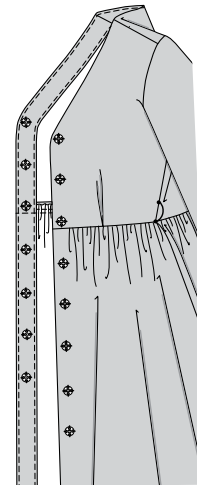
To keep facing in place, on INSIDE, tack facing to robe at shoulder seams. On OUTSIDE, **STITCH IN THE DITCH** of the waist seam across facing.



FINISHING

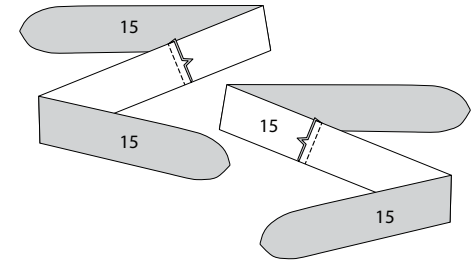
17. On OUTSIDE, sew socket sections of snaps to LEFT front at small dots. On INSIDE, sew knob sections to RIGHT front at small dots.

Make thread loops over side seams between the small dots.

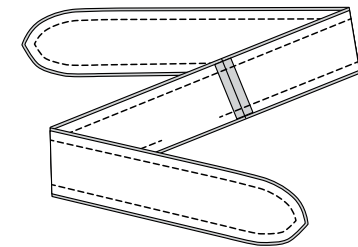


TIE BELT

18. Stitch center back edges of TIE BELT (15) and tie belt facing.

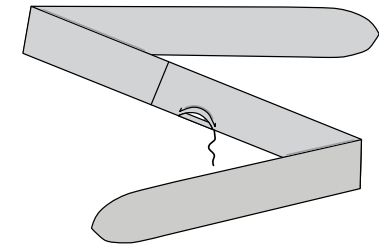


19. With RIGHT sides together and raw edges even, pin facing to belt. Stitch, leaving an opening in one long edge for turning. **TRIM SEAM.**



20. Turn belt; press. Slipstitch opening closed.

Wrap belt around waist, threading through loops, and tie when wearing.





Congrats!

You've completed your sewing adventure

**SHARE
YOUR** LOOK



Post your pattern and tag us
[@simplicity_creative_group](#) and [#simplicitypatterns](#)
for a chance to be featured on our social media.

Look for more PDF patterns at [simplicity.com](#)

Have a question or need help with your sewing project call us at
1-800-782-0323

McCall's
by **design**_{group}

McCall's ©2024 a division of IG Design Group Americas Inc. • Atlanta, GA 30342 USA [www.thedesigngroup.com](#) • All Rights Reserved. [www.mccall.com](#) • Made in the U.S.A. Fabriqué aux États-Unis.

To be used for individual private home use only and not for commercial or manufacturing purposes. • A usage privé seulement et non à des fins commerciales ou de production en série. • Para uso privado solamente, no se puede utilizar con propósitos de comercialización o de producción en serie.