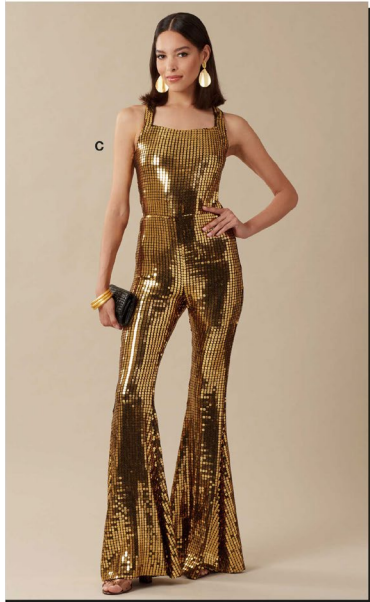


McCall's

M8534



Designed and printed in USA

Scan QR code for a Sew-Along video tutorial. Scannez le code QR pour un didacticiel vidéo de couture.



Average

MISSES' KNIT JUMPSUITS

Suggested Fabrics: Stretch Knits only such as Interlock, Jerseys, Novelty Knits, Sequin Knit. See Stretch Gauge. **Lining:** Tricot. **NOTE:** If sequin knit fabric will be used, it is recommended to use lining in the entire garment. Instructions are included.

Notions: A,B,C: One invisible zipper: 14" (36cm - adjust to fit) for **A**, 9" (23cm - adjust to fit) for **B,C**, ¼" (6mm) elastic: 3¾ yds. (3.6m) for **A**, 4¾ yds. (4.5m) for **B,C**. **Also for A:** Swimwear buckle closure with 1¼" (3cm) opening.

Sizes	6	8	10	12	14	16	18	20	22	24
European	32	34	36	38	40	42	44	46	48	50

BODY MEASUREMENTS: Select pattern size based on body measurements

Bust	30½	31½	32½	34	36	38	40	42	44	46	Ins.
Waist	23	24	25	26½	28	30	32	34	37	39	"
Hip-9" below waist	32½	33½	34½	36	38	40	42	44	46	48	"
Back-neck to waist	15½	15¾	16	16¼	16½	16¾	17	17¼	17½	17¾	"

Jumpsuit A	60"* - 2¾ yds.										
Lining	60"* - ¾ yd. (Bodice only), 2¾ yds. (Bodice and pants)										
Jumpsuit B	60"*	2½	2½	2½	2½	2½	2½	2½	2½	2½	Yds.
Contrast B (Bodice Front and Back)	60"*	¾	¾	¾	¾	¾	¾	¾	¾	¾	¾ Yd.

Lining B,C	60"* - ¾ yd. (Bodice only), 2¾ yds. (Bodice and pants)										
Jumpsuit C	60"*	2½	2½	2½	2½	2½	2½	2½	2½	2½	Yds.

FINISHED GARMENT MEASUREMENTS

A,B,C Bust	28	29	30	31½	33½	35½	37½	39½	41½	43½	Ins.
A,B,C Waist	25	26	27	28½	30½	32½	34½	36½	38½	40½	"
A,B,C Hip	29½	30½	31½	33	35	37	39	41	43	45	"
Width, each leg											
Jumpsuit A,B,C	38	39	40	41	42	43	44	45	46	47	Ins.
Finished back length from base of neck											
Jumpsuit A,B,C	56½	57	57½	58	58½	59	59½	60	60½	61	Ins.

*with nap **without nap

Moins Facile

COMBINAISONS EN TRICOT POUR JEUNES FEMMES

Tissus Conseillés: Tricot extensibles seulement tels que Interlock, Jerseys, Tricot fantaisie, Tricot à paillettes. Reportez-vous au taux d'élasticité. **Doubleure:** Tricot. **NOTE:** si tricot à paillettes est utilisé, il est recommandé d'utiliser du tissu de doubleure sur tout le vêtement. Les instructions sont incluses.

Mercurie: A,B,C: 1 fermeture à glissière invisible: 36cm (adaptez pour ajuster) pour **A**, 23cm (adaptez pour ajuster) pour **B,C**, élastique de 6mm: 3.6m pour **A**, 4.5m pour **B,C**. **Aussi pour A:** Fermeture à boucle pour maillot de bain avec ouverture de 3cm.

Tailles	6	8	10	12	14	16	18	20	22	24
Françaises	34	36	38	40	42	44	46	48	50	52
Européen	32	34	36	38	40	42	44	46	48	50

MESURES DU CORPS: Choisissez la taille du patron basée sur les mesures du corps

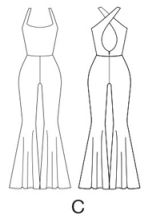
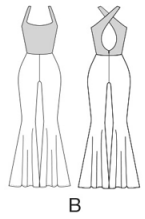
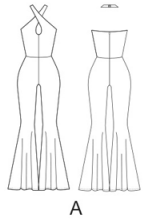
Poitrine	78	80	83	87	92	97	102	107	112	117	cm
Taille	58	61	64	67	71	76	81	87	94	99	"
Hanches (23cm au-dessous de la taille)	83	85	88	92	97	102	107	112	117	122	cm
Dos du cou à la taille	39.5	40	40.5	41.5	42	42.5	43	44	44.5	45	"

Combinaison A	150cm* - 2.4m										
Doubleure	150cm* - 0.8m (Corsage seulement), 2.4m (Corsage et pantalon)										
Combinaison B	150cm*	2.3	2.3	2.3	2.3	2.4	2.4	2.4	2.4	2.4	m
Contraste B (Corsage devant et dos)	150cm*	0.6	0.6	0.6	0.6	0.6	0.6	0.6	0.6	0.6	m
Doubleure B,C	150cm* - 0.6m (Corsage seulement), 2.5m (Corsage et pantalon)										
Combinaison C	150cm*	2.3	2.3	2.3	2.3	2.4	2.4	2.4	2.5	2.5	m

MESURES DES VÊTEMENTS FINI

A,B,C Poitrine	71	74	76	80	85	90	95	100	105	110	cm
A,B,C Taille	64	66	69	72	77	83	88	93	98	103	"
A,B,C Hanches	75	77	80	84	89	94	99	104	109	114	"
Largeur, chaque jambe											
Combinaison A,B,C	97	99	102	104	107	109	112	114	117	119	cm
Longueur finie - dos, votre nuque à l'ourlet											
Combinaison A,B,C	144	145	146	147	149	150	151	152	154	155	cm

*avec sens **sans sens



Use the 1 inch (2.54cm) box to ensure you are using rule at 100%

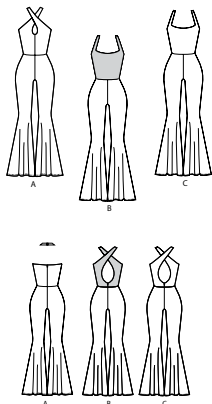
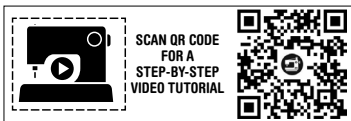
Utilisez la boîte de 2,54 cm pour vous assurer d'utiliser la règle à 100%.

Utilizar un cuadrado de 2,54 cm para asegurarse de estar usando la regla al 100%.

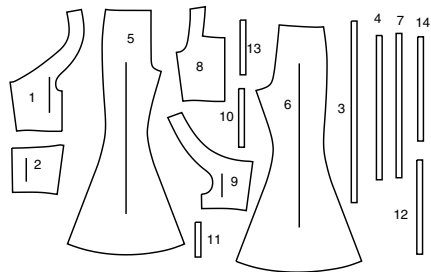
4" of crosswise folded fabric must STRETCH from here
10 cm de tricot plié sur le travers et sur le droit-fil doivent s'étirer de cette limite à celle là
10 cm de tejido de punto doblado (a lo largo y luego al través) deben estirarse desde acá

To Here 50%
jusqu'ici 50%
hasta acá 50%

When using the Pick-A-Knit® rule to measure your fabrics stretch capacity, rule must be viewed or printed at 100%.
Quand vous utilisez le taux d'élasticité pour mesurer la capacité d'élasticité des tissus, le taux doit être visible ou imprimé à 100%.
Al utilizar el calibre de elasticidad para medir la capacidad de elasticidad de las telas, el calibre debe estar visible o impreso al 100%.

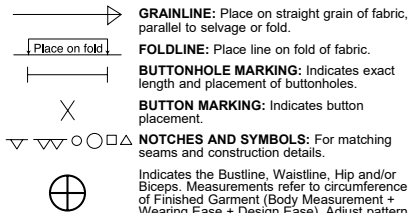


14 PATTERN PIECES



- 1 Bodice Front-A
- 2 Bodice Back-A
- 3 Elastic Guide for Front-A
- 4 Elastic Guide for Front and Back-A
- 5 Pants Front-A,B,C
- 6 Pants Back-A,B,C
- 7 Elastic Guide for Waist-A,B,C
- 8 Bodice Front-B,C
- 9 Bodice Back-B,C
- 10 Elastic Guide for Front-B,C
- 11 Elastic Guide for Neck-B,C
- 12 Elastic Guide for Neck-B,C
- 13 Elastic Guide for Front-B,C
- 14 Elastic Guide for Back-B,C

PATTERN MARKINGS



GRAINLINE: Place on straight grain of fabric, parallel to selvage or fold.
FOLDLINE: Place line on fold of fabric.
BUTTONHOLE MARKING: Indicates exact length and placement of buttonholes.
BUTTON MARKING: Indicates button placement.
NOTCHES AND SYMBOLS: For matching seams and construction details.
 Indicates the Bustline, Waistline, Hip and/or Biceps. Measurements refer to circumference of Finished Garment (Body Measurement + Wearing Ease + Design Ease). Adjust pattern if necessary. The measurement excludes pleats, tucks, darts and seam allowances.
SEAM ALLOWANCE: 5/8" (1.5cm) included unless otherwise indicated, but not printed on tissue.

ADJUST IF NECESSARY

Lengthen or Shorten at adjustment lines (==) or where indicated on pattern. If substantial length is added, you may need to purchase additional fabric.
TO SHORTEN: Crease along adjustment line. Make a fold half the amount needed. Tape in place.
TO LENGTHEN: Slash between adjustment lines. Spread amount as needed, keeping edges parallel. Tape over paper.
 When Alteration lines are not on tissue, lengthen or shorten at lower edge.

CUTTING AND MARKING

SHRINK FABRIC if not labeled pre-shrunk. Press.
CIRCLE LAYOUT for View, Size, Fabric Width.
 Use **WITH NAP** layout for fabrics with one-way designs, nap, pile or surface shading. Because most knits have surface shading, a with nap layout is used.
 For **DOUBLE THICKNESS (WITH FOLD)** - fold fabric with right sides together.
*** DOUBLE THICKNESS (WITHOUT FOLD)** - For fabrics with nap, fold fabric crosswise, right sides together. Mark as shown. Cut along crosswise fold of fabric (A). Turn upper layer 180° so arrows go in same direction and place over lower layer, right sides together (B).
 For **SINGLE THICKNESS** - place fabric right side up. (For Fur Pile fabrics, place pile side down.)

★ Cut other pieces first, allowing enough fabric to cut this piece. Open fabric. For "Cut 1" pieces, cut piece once on single layer of fabric with piece face up on right side of fabric.
 Pattern may have cutting lines for several sizes. Select the proper cutting line or pattern pieces for your size.
 Before **CUTTING** place all pieces on fabric according to layout. Pin. (Layouts show approximate position of pattern pieces; position may vary according to your pattern size.) Cut **ACCURATELY**, cutting notches outward.
 Before removing pattern, **TRANSFER MARKINGS** and lines of construction to Wrong Side of fabric, using the Pin and Chalk Pencil method or Tracing Paper and Dressmaker Wheel. Markings needed on right side of fabric should be thread traced.
NOTE: Broken-line boxes (a! b! c!) in layouts represent pieces cut by measurements provided.

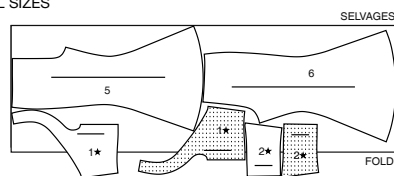
CUTTING LAYOUTS

RIGHT SIDE OF PATTERN	WRONG SIDE OF PATTERN	RIGHT SIDE OF FABRIC	WRONG SIDE OF FABRIC
-----------------------	-----------------------	----------------------	----------------------

JUMPSUIT A

USE PIECES: 1 2 5 6

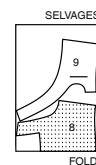
60" (150CM)
WITH NAP
ALL SIZES



CONTRAST

USE PIECES: 8 9

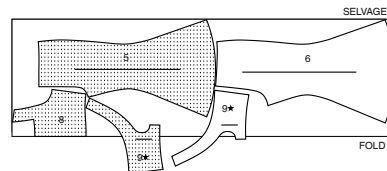
60" (150CM)
WITH NAP
ALL SIZES



JUMPSUIT C

USE PIECES: 5 6 8 9

60" (150CM) WITH NAP
ALL SIZES

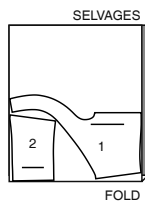


LINING A

USE PIECES: 1 2

NOTE: FOR SEQUIN FABRICS, FOLLOW JUMPSUIT A LAYOUT.

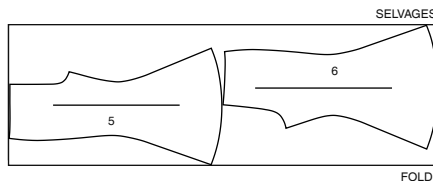
60" (150CM)
WITHOUT NAP
ALL SIZES



JUMPSUIT B

USE PIECES: 5 6

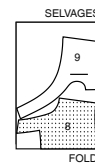
60" (150CM)
WITH NAP
ALL SIZES



LINING B,C (NON-SEQUINED FABRICS)

USE PIECES: 8 9

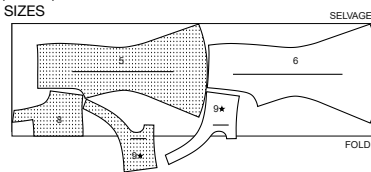
60" (150CM)
WITHOUT NAP
ALL SIZES



LINING B,C (SEQUINED FABRICS)

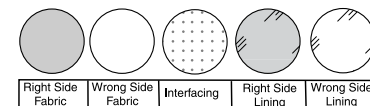
USE PIECES: 5 6 8 9

60" (150CM) WITHOUT NAP
ALL SIZES



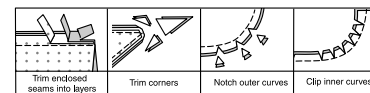
SEWING INFORMATION

FABRIC KEY



SEAM ALLOWANCES

Use 5/8" (1.5cm) seam allowances unless otherwise indicated.



PIN AND FIT

Pin or baste seams, **RIGHT SIDE TOGETHER**, matching notches. Fit garment before stitching major seams.

PRESS

Press seam allowances flat; then open unless otherwise stated. Clip where necessary so they lie flat.

GLOSSARY

Sewing methods in **BOLD TYPE** in Sewing Instructions are explained below:

NARROW HEM - Turn in hem; press, easing in fullness if necessary. Open out hem. Turn in again so raw edge is along crease; press. Turn in along crease; stitch.

UNDERSTITCH - Open out facing or underside of garment; stitch to seam allowance close to seam.

SLIPSTITCH - Slide needle through a folded edge, then pick up a thread of underneath fabric.



THE BEST SEWING TECHNIQUES... FOR KNITS

- Use a ball point or stretch needle.
- Narrow zig-zag stitch or a stretch stitch.
- To prevent shoulder seams from stretching, pin center of hem tape, clear elastic or twill tape along seam line on front shoulder edges, then stitch the shoulder seams.

THE BEST TECHNIQUES FOR WORKING WITH SEQUINS

- Sequined fabrics work best for garments that are simple in design, have few pattern pieces and minimum details.
- A lining must be used to prevent sequined fabric from irritating the skin.
- With this simple design, Simplicity makes it easy for you to achieve sequin success. We give you ... a lined garment ... Separate yardages and cutting layouts for sequined fabric and lining ... STEP-BY-STEP Sewing Directions with special cutting and sewing tips.
- PIN-FIT garment and make any adjustments before sewing.
- USE a long machine-stitch 8-10 stitches per inch ... polyester thread, a sharp No. 14 or 16 needle, changing it as soon as it becomes dull.
- TEST stitch on a scrap of fabric before you begin.
- TO STABILIZE sequins so they don't run off the fabric, stay-stitch each piece 1/4" (6mm) from all edges.
- To prevent sequins from getting caught in the feed dog, stitch with sequin side up.
- Remove loose sequins from seam allowance and use them for repairs later.
- FINGER PRESS or use a low heat setting on your iron and a press cloth. DON'T use steam! It will cause backing to curl and remove shine from sequins.
- REPLACE any missing or broken sequins along seams with a fine hand sewing needle.

PATTERN PIECES WILL BE IDENTIFIED BY NUMBERS THE FIRST TIME THEY ARE USED.

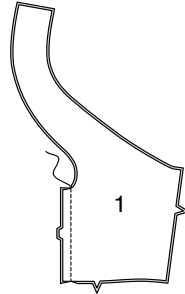
STITCH SEAMS WITH RIGHT SIDES TOGETHER UNLESS OTHERWISE STATED.

JUMPSUIT A, B, C

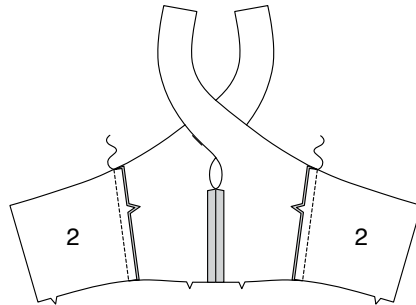
NOTE: Under each sub-heading, the first view will be shown unless otherwise indicated.

BODICE A

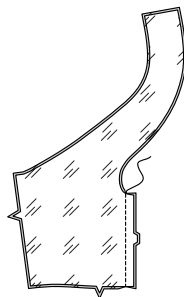
1. With RIGHT sides together, stitch center front seam of BODICE FRONT (1) sections.



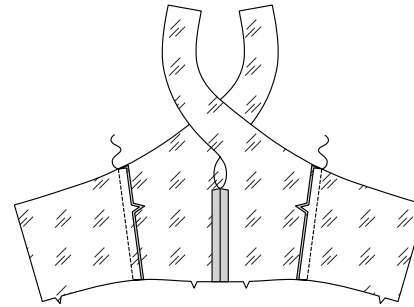
2. With RIGHT sides together, stitch BODICE BACK (2) to side edge of front, matching notches.



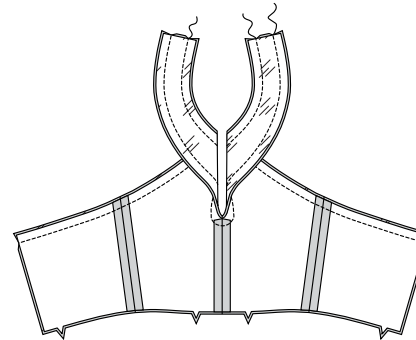
3. Stitch bodice front lining sections together at center front.



4. Stitch bodice back lining to bodice front lining at sides.

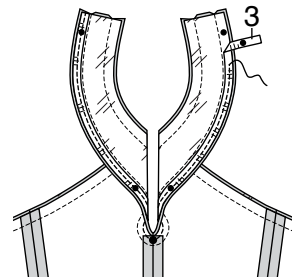


5. With RIGHT sides together, pin lining to bodice having raw edges even. Stitch underarm and front neck edges, keeping ends of straps free.



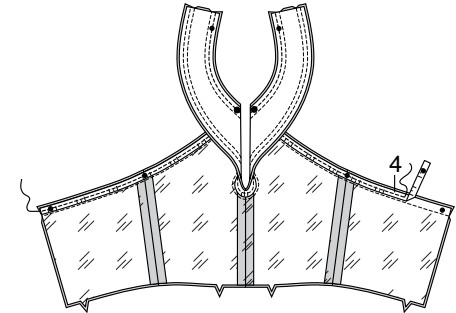
6. Cut a piece of elastic the length of ELASTIC GUIDE FOR FRONT (3). Transfer markings.

On lining side of seam, pin elastic to front neck edge, matching small and large dots, placing elastic within seam allowance close to stitching. Stitch along center of elastic, through all thicknesses, stretching elastic while stitching.



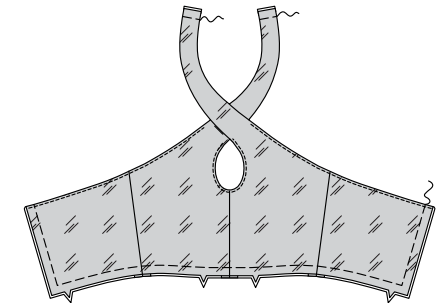
7. Cut two pieces of elastic the length of ELASTIC GUIDE FOR FRONT AND BACK (4). Transfer markings.

On lining side of seam, pin each elastic to front and back underarm edges, matching small and large dots, placing elastic within seam allowance close to stitching. Stitch along center of elastic, through all thicknesses, stretching elastic while stitching.



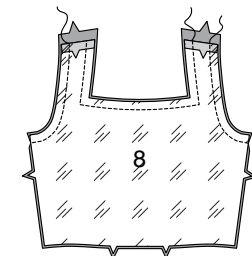
8. UNDERSTITCH lining as far as possible.

Turn lining to INSIDE. Press. Baste raw edges together.



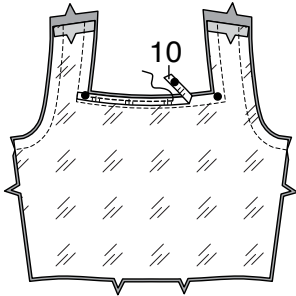
BODICE B, C

9. Press under seam allowance on shoulder edges of BODICE FRONT (8) LINING. With RIGHT sides together, pin lining to bodice front having raw edges even. Stitch neck and under arm seams, leaving side seams and shoulder edges open.



10. Cut a piece of elastic the length of ELASTIC GUIDE FOR FRONT (10). Transfer markings.

On lining side of seam, pin elastic to front neck edge, matching small and large dots, placing elastic within seam allowance close to stitching. Stitch along center of elastic, through all thicknesses, stretching elastic while stitching.

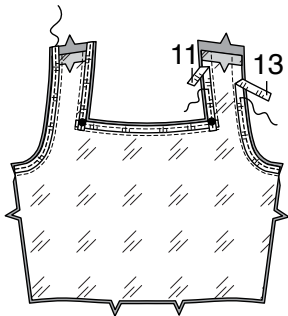


11. Cut two pieces of elastic the length of ELASTIC GUIDE FOR NECK (11). Transfer markings.

On lining side of seam, pin each elastic to side edge of neck, matching markings, placing elastic within seam allowance close to stitching. Stitch along center of elastic, through all thicknesses, stretching elastic while stitching.

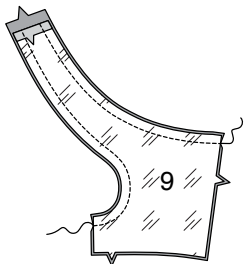
Cut two pieces of elastic the length of ELASTIC GUIDE FOR FRONT (13). Transfer markings.

On lining side of seam, pin each elastic to side shoulder and under arm edges, placing elastic within seam allowance close to stitching. Stitch along center of elastic, through all thicknesses, stretching elastic while stitching.



12. Press under seam allowance on shoulder edges of BODICE BACK (9) LINING.

With RIGHT sides together, pin lining to bodice back having raw edges even. Stitch back neck and under arm seams, leaving side seams, center back, and shoulder edges open.

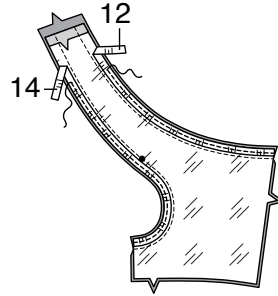


13. Cut two pieces of elastic the length of ELASTIC GUIDE FOR NECK (12). Transfer markings.

On lining side of seam, pin each elastic to back edge of neck, matching markings, placing elastic within seam allowance close to stitching. Stitch along center of elastic, through all thicknesses, stretching elastic while stitching.

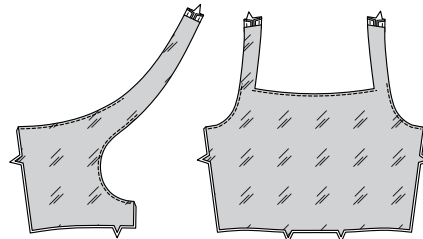
Cut two pieces of elastic the length of ELASTIC GUIDE FOR BACK (14). Transfer markings.

On lining side of seam, pin each elastic to side back shoulder and back edges, placing elastic within seam allowance close to stitching. Stitch along center of elastic, through all thicknesses, stretching elastic while stitching.

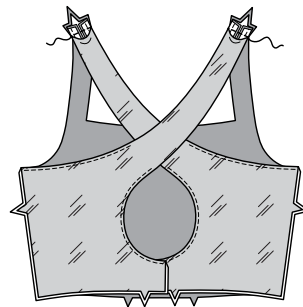


14. Turn bodice front and back sections RIGHT side out. Press.

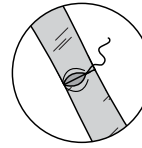
UNDERSTITCH bodice lining sections, as far as possible.



15. With RIGHT sides together, pin bodice back to bodice front at shoulder seams, crossing back sections as shown. Stitch, keeping pressed edges of lining free. Trim seam.

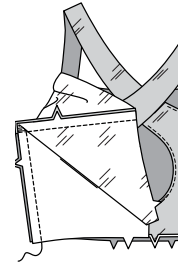


16. SLIPSTITCH shoulder edges of bodice together.



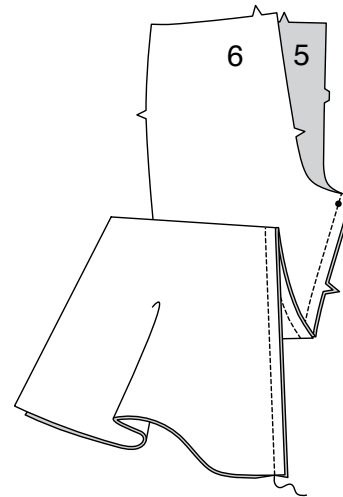
17. Open out lining. With RIGHT sides together and raw edges even, pin bodice and lining at sides, matching armhole seams and having raw edges even. Stitch side seams, in one continuous stitching.

Baste raw edges together.

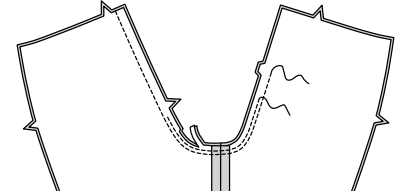


CONTINUE AS FOLLOWS FOR ALL VIEWS

18. Stitch PANTS BACK (6) and PANTS FRONT (5) together at inner leg, stretching back to fit front between upper edge and notch, matching small dots.



19. Stitch crotch seam, ending at back notch. Stitch again 1/4" (6mm) away in seam allowance along curve, as shown. Trim close to second stitching.

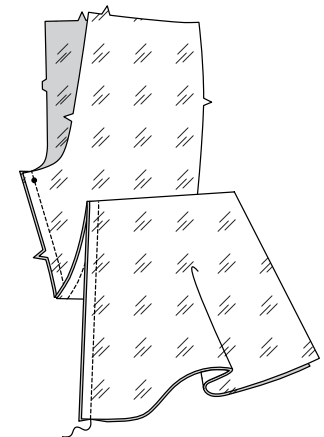


20. Stitch back and front together at sides.

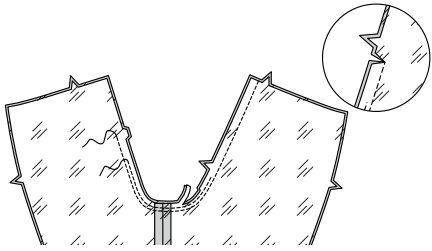


Optional Pants Lining for Sequin Fabrics.

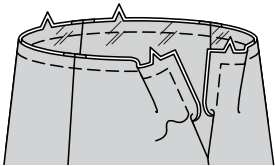
21. Stitch pants front and back LINING sections together at inner leg, stretching back to fit front between upper edge and notch, matching small dots.



22. Stitch crotch seam of pants lining, ending at back notch. Stitch again 1/4"(6mm) away in seam allowance along curve, as shown. Trim close to second stitching, clipping to stitching at notch at center back seam.

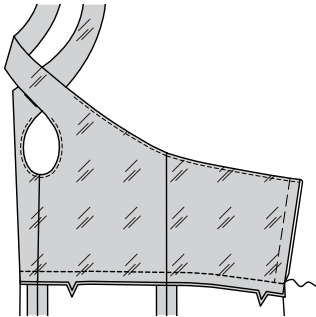


23. With WRONG sides together, pin lining to pants, having upper raw edges even. Baste upper and back edges.

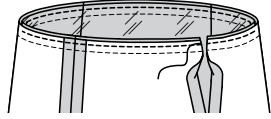


ALL VIEWS

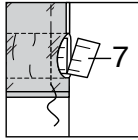
24. With RIGHT sides together, pin bodice to upper edge of pants, matching notches, having raw edges even at center back. Stitch along seam line.



25. To form casing for elastic, stitch waist seam allowances together 1/4"(6mm) from raw edge, leaving back edges open and keeping garment free.



26. Cut elastic the measurement of ELASTIC GUIDE FOR WAIST (7). Insert elastic through one opening in casing, matching back seam allowances, stitch across ends of elastic. Pull elastic out and trim close to stitching.

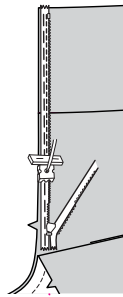


ZIPPER

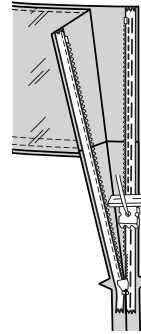
NOTE: Stitch the invisible zipper using an invisible zipper foot. Before you begin, be sure to line up your needle with the center of the invisible zipper foot or you may break your needle. When the coils are to the LEFT of the raw edge use the LEFT groove and when the coils are to the RIGHT of the raw edge use the RIGHT groove.

27. Open the zipper and press the tape flat on the WRONG side unrolling the coils. Do not press the coils. (Use a low iron setting.)

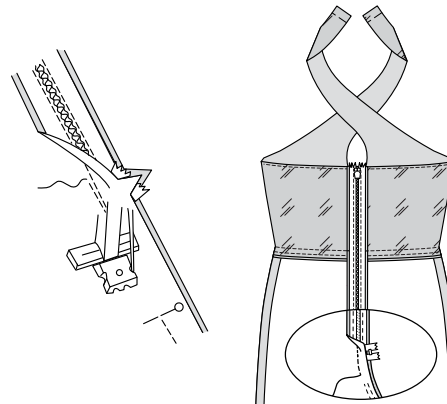
On OUTSIDE, pin RIGHT side of the zipper face down on the RIGHT side of the zipper opening. Have the coil along the seam line, the tape within the seam allowance and the top stop 1/8"(3mm) below upper edge of back opening, as shown. Hand-baste along center of the tape. Position zipper foot at the top of the zipper with RIGHT groove of the foot over coil. Stitch along tape to the notch. Back-stitch to reinforce.



28. Pin the remaining half of the zipper to the LEFT side of the zipper opening in same manner. Make sure the upper edges of the garment are even. Hand-baste along the center of the tape. Position zipper foot at the top of the zipper with LEFT groove over the coil. Stitch along tape to the notch. Back-stitch to reinforce.

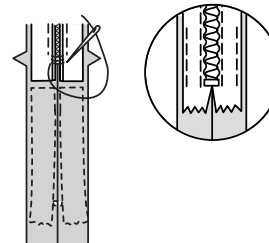


29. Close zipper and check that it is invisible from the OUTSIDE. Pull the free ends of the zipper tape away from the seam allowance. Pin remaining center back seam together below zipper. Position zipper foot all the way to the LEFT so the needle goes down through the outer notch of the foot. Start stitching seam 1/4"(6mm) above lowest stitch and slightly to the LEFT. Stitch remainder of seam connecting to previous stitching.

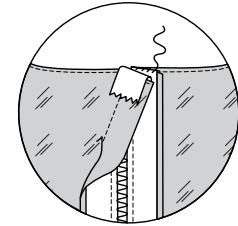


30. If the zipper is longer than the opening, using a strong thread, hand-sew a few small stitches across ends of coils at end of opening. Trim away lower end of zipper tape to within 5/8"(1.5cm) of hand-stitches.

If you prefer, open out each seam allowance at end of zipper and stitch tape to seam allowance.

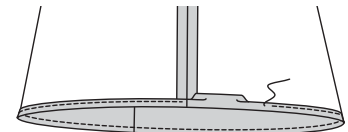


31. Turn upper ends of zipper tape over seam allowances. Hand-sew up upper edge of back.



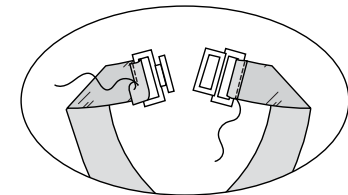
FINISHING

32. NARROW HEM lower edge of pants. For sequin fabrics, trim away 1/2"(1.3cm) from lower edge of lining. **NARROW HEM** lower edge of lining.



33. VIEW A- Thread back edges of bodice through ends of buckle. Press under ends along center back fold line. Press under 1/4"(6mm) on raw edge. Stitch close to inner pressed edge.

Cross ends of straps at front front while wearing.





Congrats!

You've completed your sewing adventure

**SHARE
YOUR** LOOK



Post your pattern and tag us
[@simplicity_creative_group](#) and [#simplicitypatterns](#)
for a chance to be featured on our social media.

Look for more PDF patterns at [simplicity.com](https://www.simplicity.com)

Have a question or need help with your sewing project call us at
1-800-782-0323

McCall's
by **design**_{group}

McCall's ©2024 a division of IG Design Group Americas Inc. • Atlanta, GA 30342 USA www.thedesigngroup.com • All Rights Reserved. www.mccall.com • Made in the U.S.A. Fabriqué aux États-Unis.
To be used for individual private home use only and not for commercial or manufacturing purposes. • A usage privé seulement et non à des fins commerciales ou de production en série. • Para uso privado solamente, no se puede utilizar con propósitos de comercialización o de producción en serie.