

McCall's

M8533



Designed and printed in USA

Average

MISSES' BOLEROS AND JACKET

Suggested Fabrics: Cotton Blends, Denim, Velveteen, Wool Blends. **Lining:** Lining Fabrics. **Interfacing:** Lightweight Fusible.

Notions: A,B,C: Pair of ½" (1.3cm) shoulder pads. **Also for C:** Three ½" (1.3cm) sew-on snaps.

Sizes	8	10	12	14	16	18	20	22	24	26
European	34	36	38	40	42	44	46	48	50	52

BODY MEASUREMENTS: Select pattern size based on body measurements

Bust	31½	32½	34	36	38	40	42	44	46	48	Ins.
Waist	24	25	26½	28	30	32	34	37	39	41	"
Hip-9" below waist	33½	34½	36	38	40	42	44	46	48	50	"
Back-neck to waist	15¾	16	16¼	16½	16¾	17	17¼	17½	17¾	18	"

Bolero A	45**	2¼	2¾	2¾	2¾	2¾	2¾	2¾	2¾	2¾	Yds.
60**	1¾	1¾	1¾	1¾	1¾	2	2	2	2	2½	"

Lining A,B	45***	1¼	1¼	1¼	1¾	1¾	1½	1½	1½	1½	Yds.
Interfacing	20"	3¾	3¾	3¾	3¾	4	4	4¾	4¾	4¾	"

Bolero B	45**	1¾	1¾	1¾	1¾	1¾	1¾	1¾	2	2	Yds.
60**	1¼	1¼	1¼	1¼	1¼	1¾	1¾	1¾	1¾	1¾	"

Contrast (Front, Middle Side Front, Back, Middle Side Back, Upper Collar 1, Upper Collar 3, Upper Sleeve)

45**	1	1¾	1¾	1¾	1¼	1¼	1¼	1¼	1¼	1¼	Yds.
60**	¾	¾	¾	¾	¾	1	1	1	1	1	"

Jacket C	45**	2¾	2¾	2¾	3	3	3¾	3¾	3¾	3¾	Yds.
60**	2	2½	2½	2½	2½	2½	2½	2½	2½	2½	"

Lining	45***	1½	1½	1½	1½	1¾	1¾	2	2	2½	"
Interfacing	20"	5¾	5¾	5¼	5¼	5¾	5¾	5½	5½	5½	"

NOTE: Please refer to the sewing instructions for **FINISHED GARMENT MEASUREMENTS**.

*with nap **without nap

Moins Facile

BOLÉROS ET VESTE POUR JEUNES FEMMES

Tissus Conseillés: Cotonnades, Denim, Velours de coton, Lainages. **Doubleure:** Tissus à doubleure. **Entoilage:** Thermocollant léger.

Mercerie: A,B,C: 1 paire d'épaulettes de 1.3cm. **Aussi pour C:** 3 boutons-pressions à coudre de 1.3cm.

Tailles	8	10	12	14	16	18	20	22	24	26
Françaises	36	38	40	42	44	46	48	50	52	54
Européen	34	36	38	40	42	44	46	48	50	52

MESURES DU CORPS: Choisissez la taille du patron basée sur les mesures du corps

Poitrine	80	83	87	92	97	102	107	112	117	122	cm
Taille	61	64	67	71	76	81	87	94	99	104	"
Hanches (23cm au-dessous de la taille)	85	88	92	97	102	107	112	117	122	127	cm

Dos du cou à la taille	40	40.5	41.5	42	42.5	43	44	44.5	45	46	"
Boléro A	115cm*	2.1	2.1	2.2	2.2	2.4	2.4	2.4	2.4	2.5	m
	150cm*	1.7	1.7	1.7	1.7	1.7	1.8	1.8	1.8	1.9	"

Doubleure A,B	115cm**	1.1	1.1	1.1	1.1	1.3	1.4	1.4	1.4	1.4	1.5	m
Entoilage	51cm	3.4	3.4	3.5	3.5	3.7	3.7	3.7	3.8	3.8	3.9	"

Bolero B	115cm*	1.6	1.6	1.6	1.6	1.6	1.7	1.7	1.7	1.8	1.8	m
	150cm*	1.1	1.1	1.1	1.1	1.1	1.1	1.5	1.5	1.5	1.5	"

Contraste (Devant, Milieu côté devant, Dos, Milieu côté dos, Col supérieur 1, Col supérieur 3, Manche supérieur)

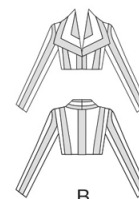
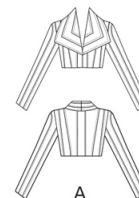
115cm*	0.9	0.9	0.9	1.0	1.1	1.1	1.1	1.1	1.1	1.1	1.1	m
150cm*	0.8	0.8	0.8	0.8	0.8	0.8	0.8	0.9	0.9	0.9	"	

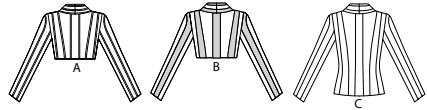
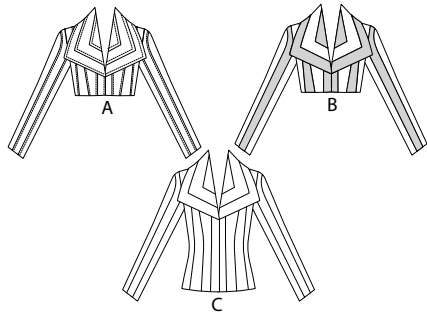
Veste C	115cm*	2.5	2.5	2.5	2.7	2.7	2.7	2.9	2.9	3.0	3.1	m
	150cm*	1.8	1.8	1.8	1.9	1.9	2.3	2.3	2.3	2.4	2.4	"

Doubleure	115cm**	1.4	1.4	1.4	1.4	1.5	1.7	1.8	1.8	1.8	1.9	"
Entoilage	51cm	4.7	4.7	4.8	4.8	4.8	4.9	4.9	5.0	5.0	5.1	"

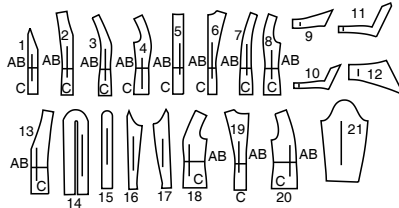
NOTE: S'il vous plaît, reportez-vous aux instructions de couture pour les **MESURES DU VÊTEMENTS FINI**.

*avec sens **sans sens





21 PATTERN PIECES



- 1 Front-A,B,C
- 2 Middle Front-A,B,C
- 3 Middle Side Front-A,B,C
- 4 Side Front-A,B,C
- 5 Back-A,B,C
- 6 Middle Back-A,B,C
- 7 Middle Side Back-A,B,C
- 8 Side Back-A,B,C
- 9 Upper Collar 1-A,B,C
- 10 Upper Collar 2-A,B,C
- 11 Upper Collar 3-A,B,C
- 12 Under Collar-A,B,C
- 13 Front Facing-A,B,C
- 14 Upper Sleeve-A,B,C
- 15 Middle Sleeve-A,B,C
- 16 Under Sleeve Front-A,B,C
- 17 Under Sleeve Back-A,B,C
- 18 Front Lining-A,B,C
- 19 Back Lining-A,B,C
- 20 Side Back Lining-A,B,C
- 21 Sleeve Lining-A,B,C

Sizes	8	10	12	14	16	18	20	22	24	26
European	34	36	38	40	42	44	46	48	50	52

FINISHED GARMENT MEASUREMENTS (Includes Design and Wearing Ease)

	35	36	37½	39½	41½	43½	45½	47½	49½	51½	Ins.
A,B,C Bust	35	36	37½	39½	41½	43½	45½	47½	49½	51½	Ins.
A,B,C Waist	28	29	30½	32½	34½	36½	38½	40½	42½	44½	"
Width, lower edge											
Bolero A,B	28½	29½	31	33	35	37	39	41	43	45	Ins.
Jacket C	36	37	38½	40½	42½	44½	46½	48½	50½	52½	"
Finished back length from base of neck											
Bolero A,B	13¾	14	14¼	14½	14¾	15	15¼	15½	15¾	16	Ins.
Jacket C	21¼	22	22¼	22½	22¾	23	23¼	23½	23¾	24	"

PATTERN MARKINGS

- GRAINLINE:** Place on straight grain of fabric, parallel to selvage or fold.
- FOLDLINE:** Place line on fold of fabric.
- BUTTONHOLE MARKING:** Indicates exact length and placement of buttonholes.
- BUTTON MARKING:** Indicates button placement.
- NOTCHES AND SYMBOLS:** For matching seams and construction details.
- Indicates the Bustline, Waistline, Hip and/or Biceps. Measurements refer to circumference of Finished Garment (Body Measurement + Wearing Ease + Design Ease). Adjust pattern if necessary. The measurement excludes pleats, tucks, darts and seam allowances.
- SEAM ALLOWANCE:** 5/8" (1.5cm) included unless otherwise indicated, but not printed on tissue.

ADJUST IF NECESSARY

- Lengthen or Shorten at adjustment lines (==) or where indicated on pattern. If substantial length is added, you may need to purchase additional fabric.
- TO SHORTEN:** Crease along adjustment line. Make a fold half the amount needed. Tape in place.
- TO LENGTHEN:** Slash between adjustment lines. Spread amount as needed, keeping edges parallel. Tape over paper.
- When Alteration lines are not on tissue, lengthen or shorten at lower edge.

CUTTING AND MARKING

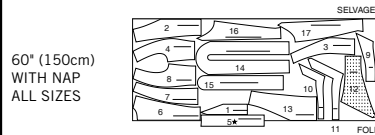
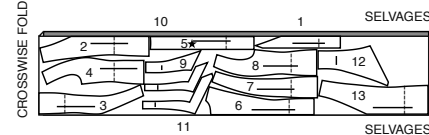
- SHRINK FABRIC** if not labeled pre-shrunk. Press.
- CIRCLE LAYOUT** for View, Size, Fabric Width. Use **WITH NAP** layout for fabrics with one-way designs, nap, pile or surface shading. Because most knits have surface shading, a with nap layout is used. For **DOUBLE THICKNESS (WITH FOLD)** - fold fabric with right sides together.
- * DOUBLE THICKNESS (WITHOUT FOLD)** - For fabrics with nap, fold fabric crosswise, right sides together. Mark as shown. Cut along crosswise fold of fabric (A). Turn upper layer 180° so arrows go in same direction and place over lower layer, right sides together (B).
- For **SINGLE THICKNESS** - place fabric right side up. (For Fur Pile fabrics, place pile side down.)
- ★ Cut other pieces first, allowing enough fabric to cut this piece. Open fabric. For "Cut 1" pieces, cut piece once on single layer of fabric with piece face up on right side of fabric.
- Pattern may have cutting lines for several sizes. Select the proper cutting line or pattern pieces for your size.
- Before **CUTTING** place all pieces on fabric according to layout. Pin. (Layouts show approximate position of pattern pieces; position may vary according to your pattern size.) Cut **ACCURATELY**, cutting notches out.
- Before removing pattern, **TRANSFER MARKINGS** and lines of construction to Wrong Side of fabric, using the Pin and Chalk Pencil method or Tracing Paper and Dressmaker Wheel. Markings needed on right side of fabric should be thread traced.
- NOTE:** Broken-line boxes (a|b|c) in layouts represent pieces cut by measurements provided.

CUTTING LAYOUTS

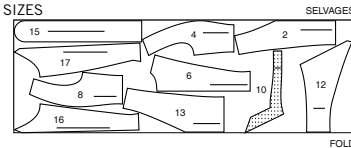
RIGHT SIDE OF PATTERN	WRONG SIDE OF PATTERN	RIGHT SIDE OF FABRIC	WRONG SIDE OF FABRIC
-----------------------	-----------------------	----------------------	----------------------

INTERFACING A,B,C

USE PIECES 1 2 3 4 5 6 7 8 9 10 11 12 13
NOTE: dashed line shown on pattern pieces in cutting layouts indicates cutting line for shorter length
 20" (51cm)
 ALL SIZES



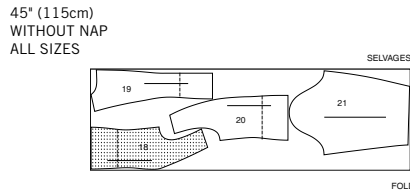
BOLERO B
 USE PIECES 2 4 6 8 10 12 13 15 16 17
 45" (115cm)
 WITH NAP
 ALL SIZES



JACKET C
 USE PIECES 1 2 3 4 5 6 7 8 9 10 11 12 13 14 15 16 17
 45" (115cm)
 WITH NAP
 SIZES 8 10 12

LINING A,B,C

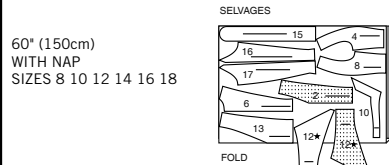
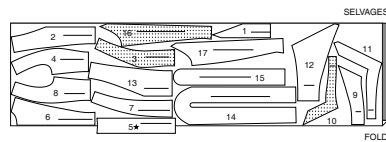
USE PIECES 18 19 20 21
NOTE: dashed line shown on pattern pieces in cutting layouts indicates cutting line for shorter length



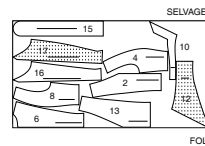
BOLERO A

USE PIECES 1 2 3 4 5 6 7 8 9 10 11 12 13 14 15 16 17

45" (115cm)
 WITH NAP
 SIZES 8 10 12 14



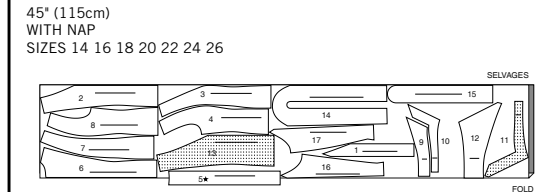
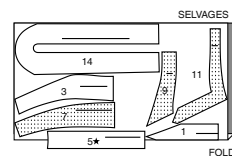
60" (150cm)
 WITH NAP
 SIZES 8 10 12 14 16 18



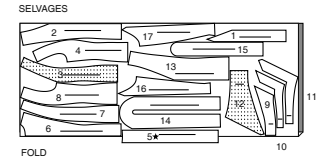
CONTRAST B

USE PIECES 1 3 5 7 9 11 14

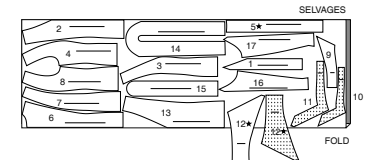
45" (115cm)
 WITH NAP
 ALL SIZES



60" (150cm)
 WITH NAP
 SIZES 8 10 12 14 16

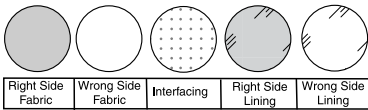


60" (150cm)
 WITH NAP
 SIZES 18 20 22 24 26



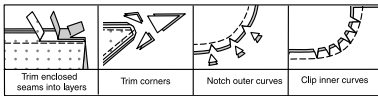
SEWING INFORMATION

FABRIC KEY



SEAM ALLOWANCES

Use 1/4" (6mm) seam allowances unless otherwise indicated.



PIN AND FIT

Pin or baste seams, **RIGHT SIDE TOGETHER**, matching notches. Fit garment before stitching major seams.

PRESS

Press seam allowances flat; then open unless otherwise stated. Clip where necessary so they lie flat.

GLOSSARY

Sewing methods in **BOLD TYPE** have Sewing Tutorial Video available. Scan QR CODE to watch videos:

SLEEVE - See Armholes/Sleeves: "sewing a set in sleeve" video.

DART - See Darts: "sewing double pointed dart" video.

DART - See Darts: "sewing flat dart" video.

EASE/GATHER - See Gathering: "sewing two row gathers" video.

REINFORCE - See Machine Stitches: "how to reinforce" video.

STAYSTITCH - See Machine Stitches: "how to do stay-stitching" video.

TOPSTITCH - See Machine Stitches: "how to topstitch" video.

UNDERSTITCH - See Machine Stitches: "how to understitch" video.

SLIPSTITCH - Slide needle through a folded edge, then pick up a thread of underneath fabric.

SEWING TUTORIALS



Build your skills viewing short, easy-to-follow videos at simplicity.com/sewingtutorials

PATTERN PIECES WILL BE IDENTIFIED BY NUMBERS THE FIRST TIME THEY ARE USED.

STITCH SEAMS WITH RIGHT SIDES TOGETHER UNLESS OTHERWISE STATED.

NOTE: Under each sub-heading, the first view will be illustrated, unless otherwise illustrated.

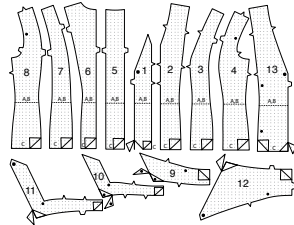
BOLERO A, B, JACKET C

NOTE FOR VIEW A: After each seam is stitched, press seam allowances as indicated in instructions and topstitch.

NOTE FOR VIEWS B, C: Disregard TopStitching instructions. After each seam is stitched, press seam allowances open, unless otherwise indicated.

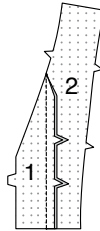
INTERFACING

1. Trim corners of **INTERFACING**, as shown. Fuse interfacing to wrong side of each matching **FABRIC** section, following manufacturer's instructions.

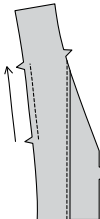


FRONT

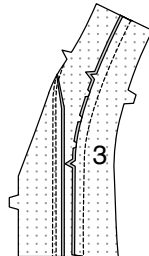
2. Pin **FRONT** (1) to **MIDDLE FRONT** (2), matching notches; stitch. Press seams toward middle front.



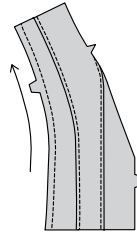
3. **TOPSTITCH** middle front 1/4"(6mm) from seam. **STAYSTITCH** side edge of middle front between notches, in direction of arrow.



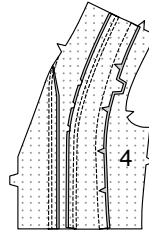
4. Pin **MIDDLE SIDE FRONT** (3) to middle front, matching notches. Stitch, clipping middle front where necessary. Press seams toward middle front.



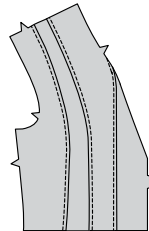
5. **TOPSTITCH** middle front 1/4"(6mm) from seam. **STAYSTITCH** side edge of middle front in direction of arrow.



6. Pin **SIDE FRONT** (4) to side edge of middle side front, clipping middle side front where necessary. Stitch. Press seam toward side front.

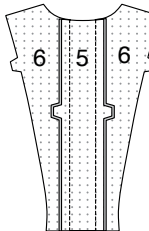


7. **TOPSTITCH** side front 1/4"(6mm) from seam.

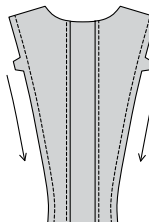


BACK

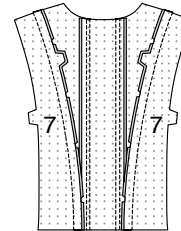
8. Pin **MIDDLE BACK** (6) to side edges of **BACK** (5), matching notches; stitch. Press seams toward middle back.



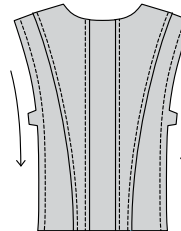
9. **TOPSTITCH** middle back 1/4"(6mm) from seam. **STAYSTITCH** side edge of middle back, in direction of arrows.



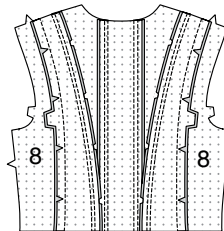
10. Pin **MIDDLE SIDE BACK** (7) to side edge of middle back, matching notches. Stitch, clipping middle side back where necessary. Press seams toward middle back.



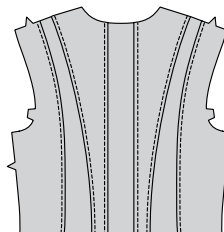
11. **TOPSTITCH** middle back 1/4"(6mm) from seam. **STAYSTITCH** side edge of middle side back in direction of arrows.



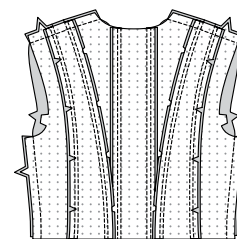
12. Pin **SIDE BACK** (8) to side edge of middle side back, clipping middle side back where necessary. Stitch. Press seam toward side back.



13. **TOPSTITCH** side back 1/4"(6mm) from seam.

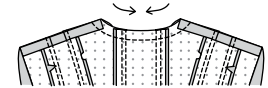


14. Stitch back to front at shoulders, matching seams. Stitch side seams.

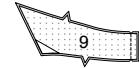


COLLAR

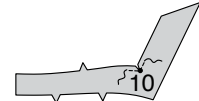
15. **STAYSTITCH** back neck edge of garment between shoulder seams, in direction of arrows.



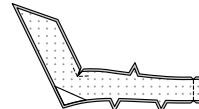
16. Stitch **UPPER COLLAR 1** (9) sections together at center back.



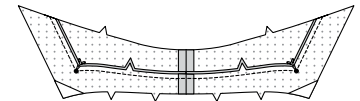
17. **REINFORCE** inward corner of each **UPPER COLLAR 2** (10) section, pivoting at dot. Clip to dot.



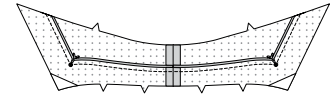
18. Stitch upper collar 2 sections together at center back.



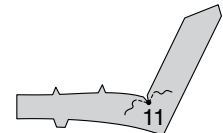
19. With **RIGHT** sides together, pin upper collar 2 to upper collar 1, matching centers and dots. Stitch in a 3/8" (1cm) seam, pivoting at dots.



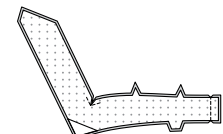
20. For View A: Press seam toward upper collar 1.



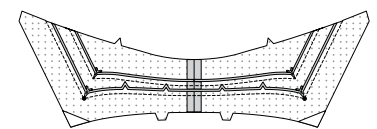
21. **REINFORCE** inward corner of each **UPPER COLLAR 3** (11) section, pivoting at dot. Clip to dot.



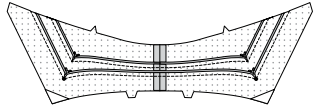
22. Stitch upper collar 3 sections together at center back.



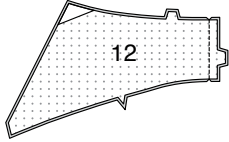
23. With **RIGHT** sides together, pin upper collar 3 to upper collar 2, matching centers and dots. Stitch in a 3/8" (1cm) seam, pivoting at dots.



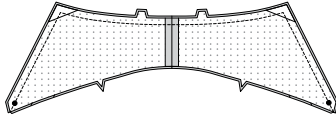
24. For View A: Press seam toward upper collar 2.



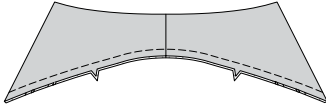
25. Stitch UNDER COLLAR (12) sections together at center back.



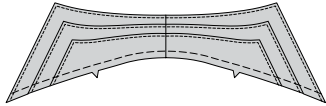
26. With RIGHT sides together, pin under collar to upper collar, matching centers and dots. Stitch, leaving single notched edge open; trim seam.



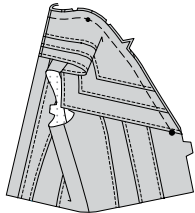
27. Turn RIGHT side out; press. Baste raw edges together.



28. For View A: TOPSTITCH lower edge of collar 1/4" (6mm) from seam. TOPSTITCH lower edge of upper collar 1 and 2, stitching through under collar.

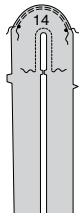


29. With RIGHT sides up, pin collar to neck and front edges, matching notches, center backs, large dots and small dots to shoulder seams, clipping garment neck edge where necessary. Baste.

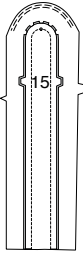


SLEEVE

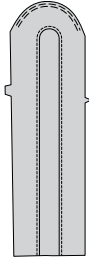
30. EASE cap of UPPER SLEEVE (14) between outer small dots. REINFORCE inner edge of sleeve between notches.



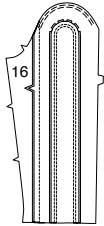
31. Pin MIDDLE SLEEVE (15) to upper sleeve, matching notches and large dots, clipping upper sleeve where necessary. Stitch; press seam toward upper sleeve.



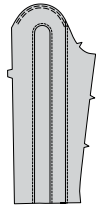
32. For View A: TOPSTITCH upper sleeve.



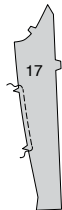
33. With RIGHT sides together, pin UNDER SLEEVE FRONT (16) to front edge of upper sleeve, matching notches. Stitch.



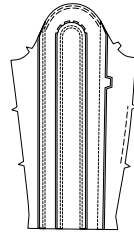
34. For View A: Press seam toward under sleeve front. TOPSTITCH under sleeve front.



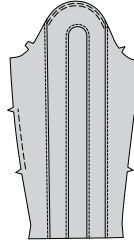
35. EASE side edge of UNDER SLEEVE BACK (17) between notches, as shown.



36. With RIGHT sides together, pin under sleeve back to back edge of upper sleeve, matching notches. Stitch.



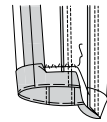
37. For View A: Press seam toward under sleeve back. TOPSTITCH under sleeve back.



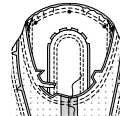
38. With RIGHT sides together, pin sleeve seam, matching notches. Adjust ease. Stitch.



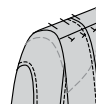
39. Turn up a 1-1/2" (3.8cm) hem on lower edge of sleeve. Baste close to fold. Hand-sew in place; press.



40. With RIGHT sides together, pin SLEEVE into armhole with center small dot at shoulder seam, matching underarm seams, notches and remaining small dots. Adjust ease; baste. Stitch. Stitch again 1/4" (6mm) away in seam allowance. Trim close to second stitching. Turn seam allowances toward sleeve.



41. Try on garment for shoulder pad placement. Pin pad to garment, extending outer edge about 5/8" (1.5cm) beyond armhole seam.



42. Sew pad to shoulder seam allowance. Tack ends to armhole seam.



FACING AND LINING

FRONT

43. STAYSTITCH side edge of FRONT FACING (13) between notches, in direction of arrow.



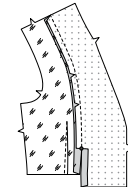
44. Stitch DART in FRONT LINING (18). Press dart toward front edge.



45. Pin front lining to front facing at side front edge, matching notches and small dots, clipping front facing where necessary. Stitch from upper edge to small dot.

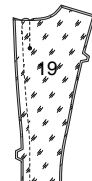


46. Press seams toward lining, pressing in remainder of lining seam allowance below dot.

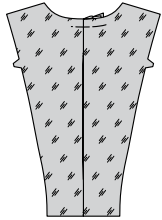


BACK

47. Pin BACK LINING (19) sections, RIGHT sides together. Stitch center back seam. Do not press seam open. To make pleat in back lining, baste center back pleat lines together, matching dots. Stitch along broken lines above dot.



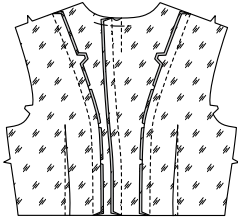
48. Press pleat toward right back. Baste across upper edge.



49. Stitch DART in SIDE BACK LINING (20). Press dart toward back edge.



50. Stitch side back lining to back lining, clipping back lining where necessary. Press seam toward back.

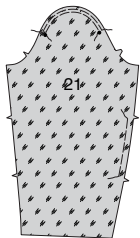


51. Stitch back lining to front lining and facing at shoulders, matching seams. Stitch side seams.



SLEEVE

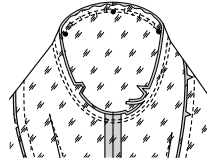
52. EASE cap of SLEEVE LINING (21) between outer small dots. EASE back edge of sleeve lining between notches, as shown.



53. With RIGHT sides together, pin sleeve lining seam, matching notches. Adjust ease. Stitch.

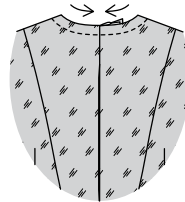


54. With RIGHT sides together, pin SLEEVE lining into armhole with center small dot at shoulder seam, matching underarm seams, notches and remaining small dots. Adjust ease; baste. Stitch. Stitch again 1/4"(6mm) away in seam allowance. Trim close to second stitching. Turn seam allowances toward sleeve lining.

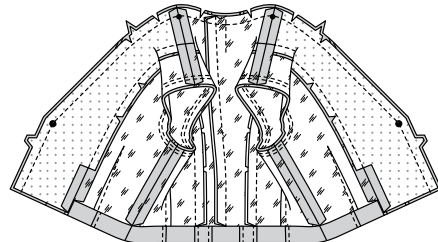


ATTACHING FACING AND LINING

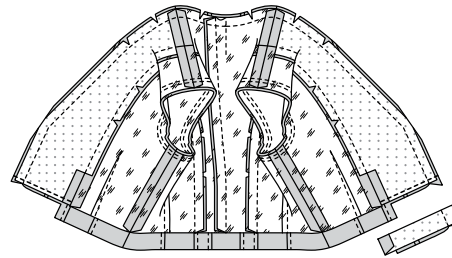
55. STAYSTITCH back neck edge of lining between shoulder seams, in direction of arrows.



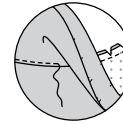
56. Pin facing/lining to garment, RIGHT sides together, matching notches, centers, large dots and seams, clipping neck edge as necessary. Stitch front and neck edges; trim seams.



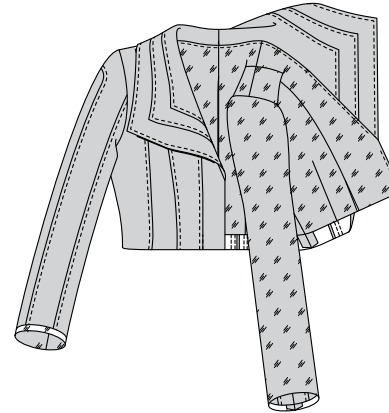
57. Stitch across facing 1-1/2"(3.8cm) above raw edge. Trim, as shown.



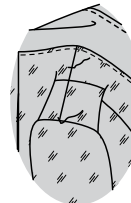
58. UNDERSTITCH facing/lining at front and neck edge as far as possible.



59. Turn facing/lining to inside; slip sleeve lining in place; press.



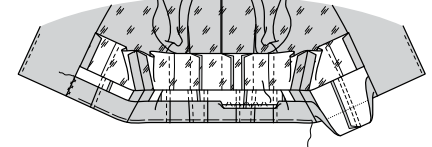
60. Tack sleeves at shoulders and underarms.



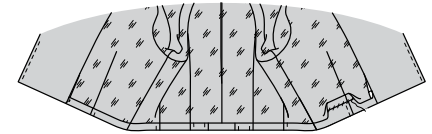
FINISHING

HEMS

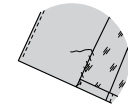
61. Turn up 1-1/2"(3.8cm) hem on lower edge of garment, keeping lining free. Baste close to fold. Sew hem in place, easing in fullness, if necessary; press. Catchstitch facing to hem.



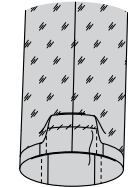
62. Turn in 5/8"(1.5cm) on lower edge of lining and place folded edge 5/8"(1.5cm) over raw edge of hem; SLIPSTITCH. Note: A pleat will form at lower edge for wearing ease.



63. SLIPSTITCH remainder of lining to front facing.

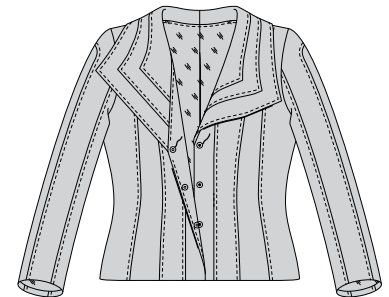


64. Turn in 5/8"(1.5cm) on lower edge of sleeve lining and place folded edge 5/8"(1.5cm) over raw edge of hem; SLIPSTITCH. NOTE: A pleat will form at lower edge for wearing ease.



SNAPS C

65. Sew ball section of snaps to facing side of right front at small dots. Lap right front over left, matching centers. Using ball section of snaps as a guide, make socket section markings on outside of left front. Sew socket section of snaps to left front at markings.





Congrats!

You've completed your sewing adventure

**SHARE
YOUR** LOOK



Post your pattern and tag us
[@simplicity_creative_group](#) and [#simplicitypatterns](#)
for a chance to be featured on our social media.

Look for more PDF patterns at [simplicity.com](https://www.simplicity.com)

Have a question or need help with your sewing project call us at
1-800-782-0323

McCall's
by **design**_{group}

McCall's ©2024 a division of IG Design Group Americas Inc. • Atlanta, GA 30342 USA www.thedesigngroup.com • All Rights Reserved. www.mccall.com • Made in the U.S.A. Fabriqué aux États-Unis.
To be used for individual private home use only and not for commercial or manufacturing purposes. • A usage privé seulement et non à des fins commerciales ou de production en série. • Para uso privado solamente, no se puede utilizar con propósitos de comercialización o de producción en serie.