

**McCall's**

M8532



Designed and printed in USA

Average

**MISSES' JACKETS AND VEST**

**Suggested Fabrics:** Cotton Blends, Denim, Nylon, Twill. **Lining B,C:** Lining Fabrics. **Interfacing:** Light-weight Fusible.

**Notions:** A,B,C: Medium weight zipper: 22" (56cm - adjust to fit) for A, 28" (71cm - adjust to fit) for B,C. **Also for A:** Six ½" (1.3cm) heavy duty snaps. **Also for B:** Fourteen ½" (1.3cm) heavy duty snaps, 2¼ yds. (2.1m) of ½" (1.3cm) drawstring cord. **Also for C:** Eight ½" (1.3cm) heavy duty snaps, one pkg. of ½" (1.3cm) single fold bias tape.

Sizes	XS (4-6)	S (8-10)	M (12-14)	L (16-18)	XL (20-22)	XXL (24-26)
European	30-32	34-36	38-40	42-44	46-48	50-52

**BODY MEASUREMENTS: Select pattern size based on body measurements**

Bust	29½-30½	31½-32½	34-36	38-40	42-44	46-48	Ins.
Waist	22-23	24-25	26½-28	30-32	34-37	39-41½	"
Hip-9" below waist	31½-32½	33½-34½	36-38	40-42	44-46	48-50	"
Back-neck to waist	15¼-15½	15¼-16	16¼-16½	16¼-17	17¼-17½	17¼-18	"

Jacket A	45**	2%	3	3½	3½	3%	3%	Yds.
	60**	2%	2¼	2%	2½	2½	2%	"

Jacket B	45**	3½	3%	3%	4%	4%	4%	Yds.
	60**	2%	3	3	3	3%	3%	"

**Interfacing** 20" - 1¼ yds.

**Lining B,C** 45\*\* - ¾ yd.

Vest C	45**	2	2	2¼	2¼	2%	2½	Yds.
	60**	1¾	1¾	1¾	1¾	1%	1%	"

**Interfacing** 20" - 1¾ yds.

**FINISHED GARMENT MEASUREMENTS (Includes Design and Wearing Ease)**

A,B,C Bust	41	43	46½	50½	54½	58½	Ins.
A,B,C Waist	41	43	46½	50½	54½	58½	"
Width, lower edge							
Jacket A, B, Vest C	41	43	46½	50½	54½	58½	Ins.
Finished back length from base of neck							
Jacket A	18½	19	19½	20	20½	21	Ins.
Jacket B, Vest C	25	25½	26	26½	27	27½	"

\*with nap \*\*without nap

Moins Facile

**VESTES ET GILET POUR JEUNES FEMMES**

**Tissus Conseillés:** Cotonnades, Denim, Nylon, Twill. **Doubleure B,C:** Tissus à doublure. **Entoilage:** Thermo-collant léger.

**Mercurerie:** A,B,C: Fermeture à glissière séparable de poids moyen: 56cm (adaptez pour ajuster) pour A, 71cm (adaptez pour ajuster) pour B,C. **Aussi pour A:** 6 boutons-pressions résistant. **Aussi pour B:** 14 boutons-pressions résistant, 2.1m de cordon de 1.3cm. **Aussi pour C:** 8 boutons-pressions résistant, 1 paquet de ruban de biais simple de 1.3cm.

Tailles	TP/XS	P/S	M/M	G/L	TG/XL	TTG/XXL
Françaises	32-34	36-38	40-42	44-46	48-50	52-54
Européen	30-32	34-36	38-40	42-44	46-48	50-52

**MESURES DU CORPS: Choisissez la taille du patron basée sur les mesures du corps**

Poitrine	75-77	80-83	87-92	97-102	107-112	117-122	cm
Taille	56-58	61-64	67-71	76-81	87-94	99-105	"

**Hanches (23cm au-dessous de la taille)**

	80-83	85-88	92-97	102-107	112-117	122-127	cm
--	-------	-------	-------	---------	---------	---------	----

Dos du cou à la taille	39-39.5	40-40.5	41.5-42	42.5-43	44-44.5	45-45.5	"
------------------------	---------	---------	---------	---------	---------	---------	---

Veste A	115cm*	2.6	2.7	2.9	3.2	3.3	3.4	m
	150cm*	1.9	2.1	2.2	2.3	2.3	2.4	"

Entoilage	51cm - 1.1m							
-----------	-------------	--	--	--	--	--	--	--

Veste B	115cm*	3.2	3.3	3.3	3.8	3.8	3.9	m
	150cm*	2.6	2.7	2.7	2.7	2.9	2.9	"

Entoilage	51cm - 1.6m							
-----------	-------------	--	--	--	--	--	--	--

Doubleure B,C	115cm*	0.3m						
---------------	--------	------	--	--	--	--	--	--

Gilet C	115cm*	1.8	1.8	2.1	2.1	2.2	2.3	m
	150cm*	1.6	1.6	1.6	1.6	1.7	1.7	"

Entoilage	51cm - 1.5m							
-----------	-------------	--	--	--	--	--	--	--

**MESURES DES VÊTEMENTS FINI (Motif et aisance de port compris)**

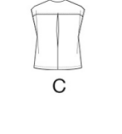
A,B,C Poitrine	104	109	118	128	138	149	cm
A,B,C Taille	104	109	118	128	138	149	"

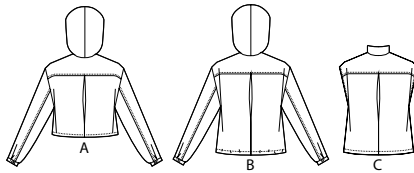
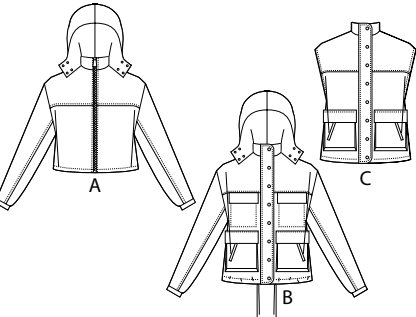
Largeur à l'ourlet							
	Veste A, B, Gilet C	104	109	118	128	138	149

Longueur finie - dos, votre nuque à l'ourlet							
	Veste A	47	48	50	51	52	53

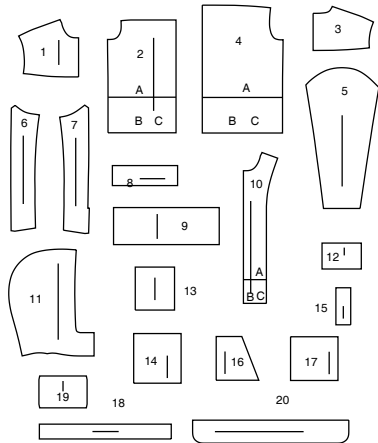
Veste B, Gilet C	64	65	66	67	69	51	"
------------------	----	----	----	----	----	----	---

\*avec sens \*\*sans sens

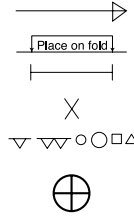




20 PATTERN PIECES



- 1 YOKE FRONT - A,B,C
- 2 FRONT - A,B,C
- 3 YOKE BACK - A,B,C
- 4 BACK - A,B,C
- 5 SLEEVE - A,B
- 6 SLEEVE FRONT - A,B
- 7 SLEEVE BACK - A,B
- 8 CUFF - A,B
- 9 COLLAR - A,B,C
- 10 FRONT FACING - A,B,C
- 11 HOOD - A,B
- 12 FLAP - B
- 13 POCKET - B
- 14 LOWER POCKET - B,C
- 15 WELT - B,C
- 16 POCKET LINING - B,C
- 17 POCKET - B,C
- 18 GUSSET - B,C
- 19 LOWER FLAP - B,C
- 20 TAB - B,C



PATTERN MARKINGS

**GRAINLINE:** Place on straight grain of fabric, parallel to selvage or fold.

**FOLDLINE:** Place line on fold of fabric.

**BUTTONHOLE MARKING:** Indicates exact length and placement of buttonholes.

**BUTTON MARKING:** Indicates button placement.

**NOTCHES AND SYMBOLS:** For matching seams and construction details.

Indicates the Bustline, Waistline, Hip and/or Biceps. Measurements refer to circumference of Finished Garment (Body Measurement + Wearing Ease + Design Ease). Adjust pattern if necessary. The measurement excludes pleats, tucks, darts and seam allowances.

**SEAM ALLOWANCE:** 5/8" (1.5cm) included unless otherwise indicated, but not printed on tissue.

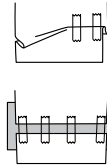
ADJUST IF NECESSARY

Lengthen or Shorten at adjustment lines (==) or where indicated on pattern. If substantial length is added, you may need to purchase additional fabric.

**TO SHORTEN:** Crease along adjustment line. Make a fold half the amount needed. Tape in place.

**TO LENGTHEN:** Slash between adjustment lines. Spread amount as needed, keeping edges parallel. Tape over paper.

When Alteration lines are not on tissue, lengthen or shorten at lower edge.



SHRINK FABRIC if not labeled pre-shrunk. Press.

CIRCLE LAYOUT for View, Size, Fabric Width.

Use **WITH NAP** layout for fabrics with one-way designs, nap, pile or surface shading. Because most knits have surface shading, a with nap layout is used.

For **DOUBLE THICKNESS (WITH FOLD)** - fold fabric with right sides together.

**\*DOUBLE THICKNESS (WITHOUT FOLD)** - For fabrics with nap, fold fabric crosswise, right sides together. Mark as shown. Cut along crosswise fold of fabric (A). Turn upper layer 180° so arrows go in same direction and place over lower layer, right sides together (B).

For **SINGLE THICKNESS** - place fabric right side up. (For Fur Pile fabrics, place pile side down.)

CUTTING AND MARKING

★ Cut other pieces first, allowing enough fabric to cut this piece. Open fabric. For "Cut 1" pieces, cut piece once on single layer of fabric with piece face up on right side of fabric.

Pattern may have cutting lines for several sizes. Select the proper cutting line or pattern pieces for your size.

Before **CUTTING** place all pieces on fabric according to layout. Pin. (Layouts show approximate position of pattern pieces; position may vary according to your pattern size.) Cut **ACCURATELY**, cutting notches outward.

Before removing pattern, **TRANSFER MARKINGS** and lines of construction to Wrong Side of fabric, using the Pin and Chalk Pencil method or Tracing Paper and Dressmaker Wheel. Markings needed on right side of fabric should be traced.

**NOTE:** Broken-line boxes (at b1 c1) in layouts represent pieces cut by measurements provided.

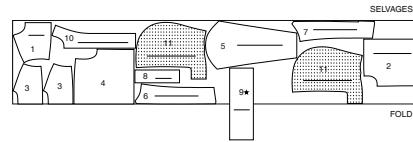
CUTTING LAYOUTS

RIGHT SIDE OF PATTERN	WRONG SIDE OF PATTERN	RIGHT SIDE OF FABRIC	WRONG SIDE OF FABRIC
-----------------------	-----------------------	----------------------	----------------------

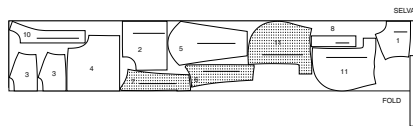
JACKET A

USE PIECES 1 2 3 4 5 6 7 8 9 10 11

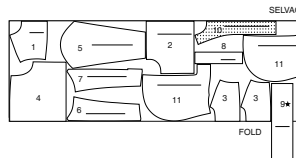
45" (115CM)  
WITH NAP  
SIZES XS S M



45" (115CM)  
WITH NAP  
SIZES L XL XXL



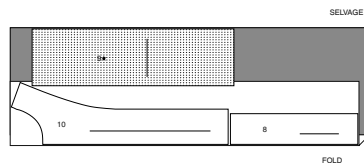
60" (150CM)  
WITH NAP  
ALL SIZES



INTERFACING A

USE PIECES 8 9 10

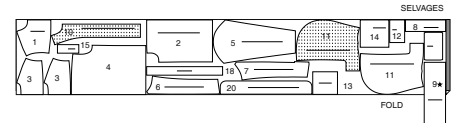
20" (51CM)  
ALL SIZES



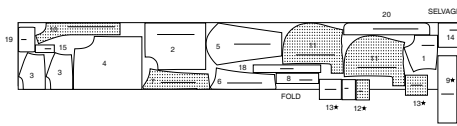
JACKET B

USE PIECES 1 2 3 4 5 6 7 8 9 10 11 12 13 14 15 18 19 20

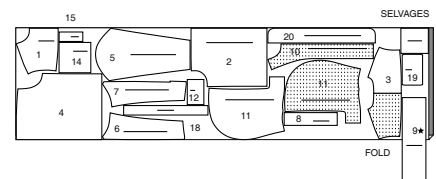
45" (115CM)  
WITH NAP  
SIZES XS S M



45" (115CM)  
WITH NAP  
SIZES L XL XXL



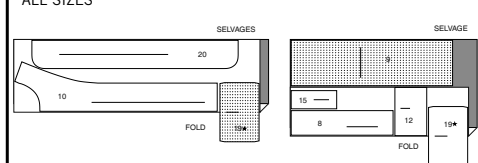
60" (150CM)  
WITH NAP  
ALL SIZES



INTERFACING B

USE PIECES 8 9 10 12 15 19 20

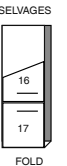
20" (51CM)  
ALL SIZES



LINING B,C

USE PIECES 16 17

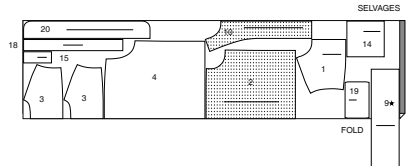
45" (115CM)  
WITHOUT NAP  
ALL SIZES



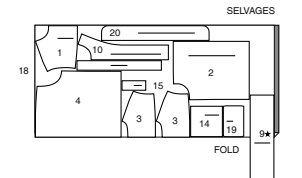
VEST C

USE PIECES 1 2 3 4 9 10 14 15 18 19 20

45" (115CM)  
WITH NAP  
ALL SIZES



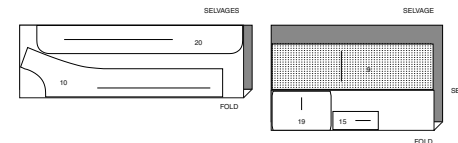
60" (150CM)  
WITH NAP  
ALL SIZES



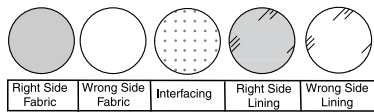
INTERFACING C

USE PIECES 9 10 15 19 20

20" (51CM)  
ALL SIZES

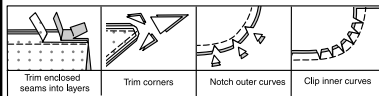


**SEWING INFORMATION**  
FABRIC KEY



**SEAM ALLOWANCES**

Use 1/4" (6mm) seam allowances unless otherwise indicated.



**PIN AND FIT**

Pin or baste seams, **RIGHT SIDE TOGETHER**, matching notches. Fit garment before stitching major seams.

**PRESS**

Press seam allowances flat; then open unless otherwise stated. Clip where necessary so they lie flat.

**GLOSSARY**

Sewing methods in **BOLD TYPE** have Sewing Tutorial Video available. Scan QR CODE to watch videos:

**DART** - See **sewing flat dart** video.

**NARROW HEM** - See **sewing narrow hems** video.

**EDGESTITCH** - See **how to edgestitch** video.

**REINFORCE** - See **how to reinforce** video.

**SLEEVE** - See **sewing a set in sleeve** video.

**SLIPSTITCH** - See **how-to sew: a Slip Stitch** video.

**STAYSTITCH** - See **how to do stay-stitching** video.

**STITCH IN THE DITCH** - See **how to stitch in the ditch** video.

**TOPSTITCH** - See **how to topstitch** video.

**UNDERSTITCH** - See **how to understitch** video.

**FINISH** - Stitch 1/4" (6mm) from raw edge and finish with one of the following: (1) Pink OR (2) Overcast OR (3) Turn in along stitching and stitch close to fold OR (4) Overlock.

**OPTIONAL FOR HEMS:** Apply Seam Binding.

SEWING TUTORIALS



Build your skills viewing short, easy-to-follow videos at [simplicity.com/sewingtutorials](http://simplicity.com/sewingtutorials)

**PATTERN PIECES WILL BE IDENTIFIED BY NUMBERS THE FIRST TIME THEY ARE USED.**

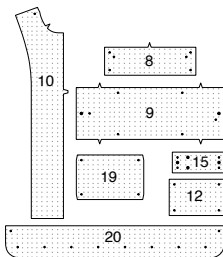
**STITCH SEAMS WITH RIGHT SIDES TOGETHER UNLESS OTHERWISE STATED.**

**JACKET A, B, VEST C**

**NOTE:** Under each sub-heading, View A will be shown unless otherwise indicated

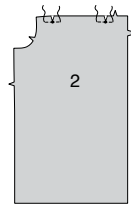
**INTERFACING**

1. Pin **INTERFACING** to wrong side of each matching **FABRIC** section. Fuse, following manufacturer's instructions.

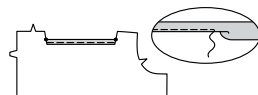


**UPPER POCKETS B**

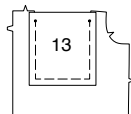
2. **REINFORCE FRONT (2)** sections at small dots, at upper edge. Clip to small dots being careful not to clip through stitching.



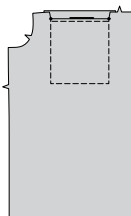
3. **NARROW HEM** front sections between clips.



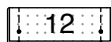
4. On **INSIDE**, pin **RIGHT** side of **POCKET (13)** to front matching small dots. Baste pocket in place along side, and lower seam allowances.



5. On **OUTSIDE**, **TOPSTITCH** pocket as basted, leaving upper edge free.



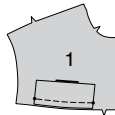
6. With **RIGHT** sides together, fold **FLAP (12)** sections in half lengthwise, along fold line. Stitch ends. Trim seam.



7. Turn flap **RIGHT** side out, press. Baste raw edges together.



8. On **OUTSIDE**, pin flaps to **YOKE FRONT (1)** sections, matching small dots, having raw edges even. Baste.

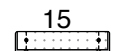


**LOWER POCKETS B, C**

9. **REINFORCE LOWER POCKET (14)** along corners of stitching lines, pivoting at small dots.



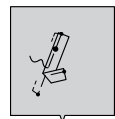
10. With **RIGHT** sides together, fold each **WELT (15)** section in half lengthwise, stitch ends.



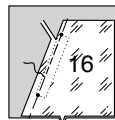
11. Turn welt **RIGHT** side out. Press. Baste raw edges together. Trim seam allowances on long edges to a scant 1/4" (6mm).



12. Pin welt to pocket, placing seamline along lower stitching line, matching symbols. Baste.



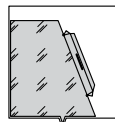
13. With **RIGHT** sides together, pin **POCKET LINING (16)** to pocket, over welt, placing seamline along stitching line. Baste. Stitch between small dots. Trim pocket seam allowance to a scant 1/4"(6mm), being careful not to cut pocket.



14. Slash along line between stitching, clipping diagonally to small dots.



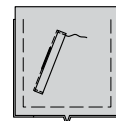
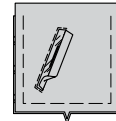
15. Turn pocket lining to **INSIDE**, pressing welt up. Press under remaining seam allowance along stitching line, between small dots.



16. On **INSIDE**, pin **RIGHT** side of **POCKET (17)** to **WRONG** side of lower pocket, (over pocket lining) having raw edges even, matching small dots and notches, Baste along outer edges.



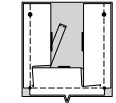
17. On **OUTSIDE**, **EDGESTITCH** pocket along pocket opening. Press welt up. **EDGESTITCH** ends of welt in place.



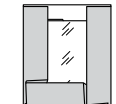
18. **REINFORCE** side edges of **GUSSET (18)** through inner small dots, as shown. Clip to small dots.



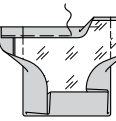
19. With **RIGHT** sides together, pin gusset to side edges of pocket, matching small and large dots. Baste. Stitch, pivoting at small dots, as shown.



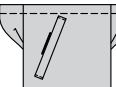
20. Turn gusset to **INSIDE**. Press.



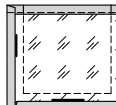
21. Turn in 1/4"(6mm) on upper edge of pocket. Press. Turn upper edge to **INSIDE** along foldline. Press. Baste close to inner pressed edge.



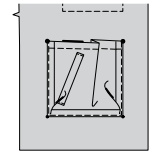
22. On **OUTSIDE**, **TOPSTITCH** along basting.



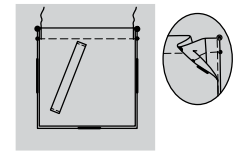
23. Turn in seam allowance on side and lower edges of gusset. Press.



24. Pin pocket to front, placing pressed edges along placement lines, matching large dots. **EDGESTITCH** side and lower edges.



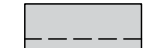
25. To make pleats in pocket upper edge, on **OUTSIDE**, bring ends with small and large dots together; baste. Press. Stitch close to edge between large and small dots, as shown.



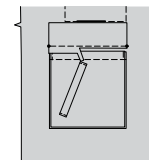
26. With **RIGHT** sides together, fold **LOWER FLAP (19)** in half lengthwise along foldline. Stitch ends.



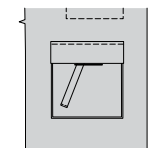
27. Turn flap **RIGHT** side out. Press. Baste raw edges together.



28. Pin flap to front, placing seamline along flap line, matching small dots. Baste. Stitch along seamline between small dots. Trim flap seam allowance to a scant 1/4" (6mm), being careful not to cut garment.

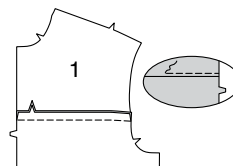


29. Turn flap down. Press. **TOPSTITCH** upper edge of flap, encasing trimmed edge.

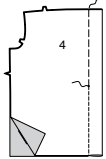


**FRONT AND BACK**

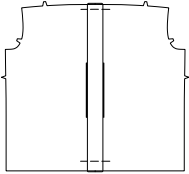
30. With **RIGHT** sides together, pin **YOKE FRONT (1)** to upper edge of **FRONT (2)** matching notches, having raw edges even. Stitch. Press seam up. On **OUTSIDE**, **TOPSTITCH** yoke front, catching in pressed seam on **INSIDE**.



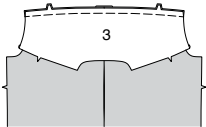
**31.** To form pleat in BACK (4), bring solid lines together at upper edge and bring broken lines together at lower edge, matching small dots. Stitch pleat from lower edge to small dot. Back-stitch at small dot to reinforce seam. Baste remaining seam, from small dot to upper edge, as shown.



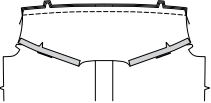
**32.** Press pleat flat, bringing seam to center. Baste across upper and lower edges.  
**NOTE:** Remove basting when garment is complete.



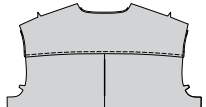
**33.** On OUTSIDE, pin RIGHT side of YOKE BACK (3) section, to upper edge of back, matching notches. Baste.



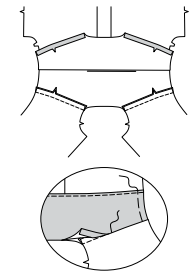
**34.** Press under 5/8" (1.5cm) seam allowance on shoulder edges of yoke back facing.  
On INSIDE, pin RIGHT side of facing to WRONG side of back, matching notches. Stitch through all thicknesses.



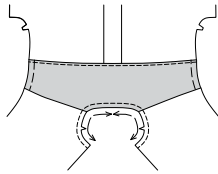
**35.** Press yoke sections up, encasing seam.  
On OUTSIDE, TOPSTITCH yoke seam, through all thicknesses.



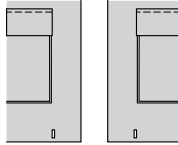
**36.** With RIGHT sides together, stitch front to back at shoulder seams.  
Press shoulder seam toward yoke back. SLIPSTITCH pressed edge of facing over seam. Baste raw edges together, as shown.



**37.** STAYSTITCH neck edge of garment in direction of arrows.

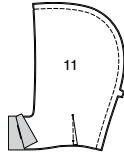


**38. VIEW B-** Make buttonholes at lower edge of front, at markings.

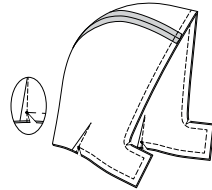


**HOOD A, B**

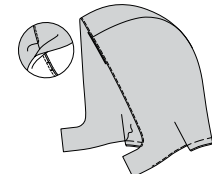
**39.** Make DARTS in HOOD (11) sections.  
With RIGHT sides together, stitch center back seam of hood sections.



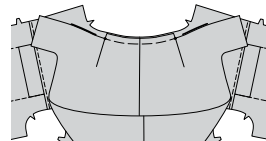
**40.** With RIGHT sides together, pin hood to hood facing having raw edges even. Stitch front and lower edge of hood, pivoting at small dot across seam allowance, as shown.  
Clip to small dots being careful not to clip through stitching.



**41. UNDERSTITCH** hood front as far as possible.  
Turn hood RIGHT side out. Press. Baste raw edges together.

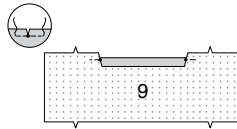


**42.** On OUTSIDE, pin hood to back neck edge matching small dots. Baste, keeping finished edge free.

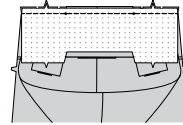


**COLLAR**

**43. REINFORCE** upper edge of COLLAR (9) at small dots. Clip to small dots, being careful not to clip through stitching. Press under 1/2" (1.3cm) between clips.

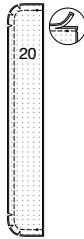


**44.** With RIGHT sides together and raw edges even, pin collar to neck edge, clipping to stay-stitching if necessary. Baste. Stitch. Press seam up, pressing collar out.

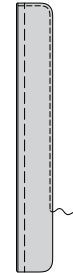


**TAB B, C**

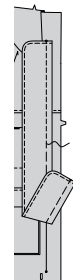
**45.** With RIGHT sides together, pin TAB (20) sections together, having raw edges even. Stitch front edge, leaving edge with small dots open. Trim seam.



**46.** Turn tab RIGHT side out. Press. Baste raw edges together.  
**TOPSTITCH** finished edges of tab.

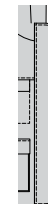


**47.** On OUTSIDE, pin tab to RIGHT front, placing seamline along placement line, matching small dots. Baste. Stitch. Trim seam close to stitching.



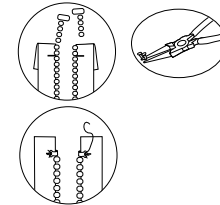
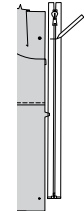
**48.** Press front edge of tab toward front, encasing seam. **TOPSTITCH** tab to secure.

**TIP:** Pin free end of tab out of the way when stitching remaining seams.



**ZIPPER**

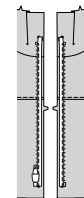
**49.** You may need to adjust the length of your Separating Zipper. Always shorten separating zippers from the top. Measure front opening edge from just below large dot on collar and to lower small dot on front edge. Mark the desired length on the zipper tape, measuring from the lower edge of the bottom stop. Cut off extra zipper 1" (2.5cm) above mark, making sure that the zipper pull is well below where you are going to cut. Do not discard the pieces. Remove zipper teeth above mark. Using pliers pry the top-stops open and remove them from the discarded pieces of zipper. Reinstall top stops by crimping them in place immediately above the last remaining tooth.  
Use an adjustable zipper foot when stitching zipper.



**50.** Separate zipper. On OUTSIDE, pin slider side of zipper, face down onto RIGHT front opening edge, with lower end of zipper at small dots, and having zipper tape 1/4" (6mm) from front raw edge. Turn under or trim away upper edge of zipper tape, even with large dot.

On OUTSIDE, pin remaining side of zipper, face down onto the LEFT front opening edge in same manner. Make sure that both sides of zipper are aligned. Baste. Using an adjustable zipper foot, stitch zipper in place 5/8" (1.5cm) from the front edge.

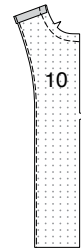
**TIP -** To avoid bumpy stitching around the tab and slider, stop stitching just before you get to the slider. Leaving the needle in the fabric, raise the presser foot and pull the slider down below the needle. Lower the presser foot and continue stitching.



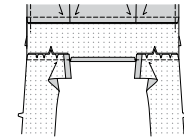
**FACINGS AND SIDE SEAMS**

**51.** Machine-Stitch 5/8" (1.5cm) from neck edge of FRONT FACING (10).

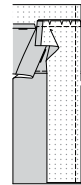
**FINISH** unmarked edge of facing. Press under shoulder seams, on facing sections.



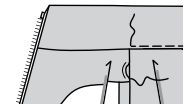
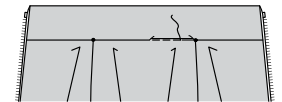
**52.** With RIGHT sides together, pin facings to each side collar, matching notches and small dots. Clip to machine-stitching if necessary. Baste. Stitch. Press seam toward collar.



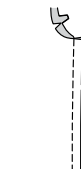
**53.** Fold collar to OUTSIDE, along fold line bringing facing down. Pin facing to front edge of jacket having raw edges even. Using a zipper foot, stitch front edge, as shown.



**54.** Turn facing, collar and hem to INSIDE. Press. Pin pressed edge of collar over neck seam. Placing pins on OUTSIDE, **STITCH IN THE DITCH** or "groove" of entire neck seam, catching in pressed edge on INSIDE, ending just before zipper.  
**SLIPSTITCH** pressed edge of facing over shoulder seams.

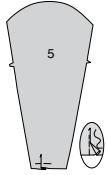


**55.** With RIGHT sides together, stitch front to back at side seams.

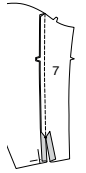


SLEEVE A, B

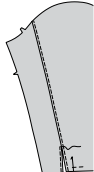
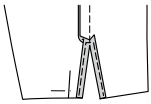
56. To make pleat in SLEEVE (5) sections, on OUTSIDE, bring solid lines to broken lines, press. Baste raw edges together.



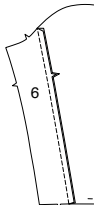
57. With RIGHT sides together, pin SLEEVE BACK (7) to sleeve matching notches and large dots. Stitch, ending at large dot. Press seam toward sleeve. Clip to stitching at large dot, being careful not to clip through stitching.



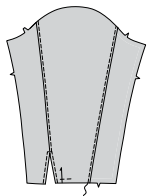
58. NARROW HEM opening edges below large dot, squaring stitching above opening. TOPSTITCH sleeve, catching in pressed seam on INSIDE, connecting with previous hem stitching.



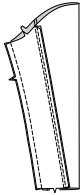
59. With RIGHT sides together, pin SLEEVE FRONT (6) to sleeve matching notches. Stitch. Press seam toward sleeve.



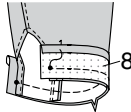
60. On OUTSIDE, TOPSTITCH sleeve, catching in pressed seam on INSIDE.



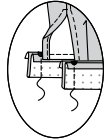
61. Stitch sleeve front to back at underarm seam.



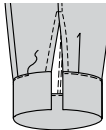
62. Press under seam allowance on unmarked edge of CUFF (8). With RIGHT sides together, pin cuff to lower edge of sleeve matching notches, and small dots at opening edges. Stitch.



63. Press seam toward cuff, pressing cuff out. Fold cuff along fold line, with RIGHT sides together. Stitch ends. Trim seams.



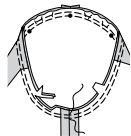
64. Turn cuff; press. On INSIDE, pin pressed edge of cuff over seam, placing pins on OUTSIDE. On OUTSIDE, EDGESTITCH cuff close to seam, catching in pressed edge of cuff on INSIDE.



OPTIONAL: EDGESTITCH remaining edges of cuff.

65. With right sides together, pin sleeve into armhole with center small dot at shoulder seam, matching underarm seams, notches and remaining small dots. Baste. Stitch. Stitch again 1/8" (3mm) away within seam allowance. Trim close to stitching.

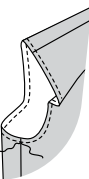
TIP: For more assistance, see [sewing a set in sleeve](#) video.



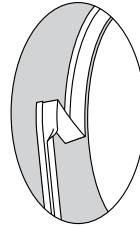
ARMHOLE C

NOTE: Trim away 1/4" (6mm) from armhole edges.

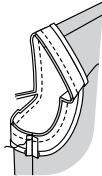
66. To prevent armhole edge from stretching, STAYSTITCH 1/4" (6mm) from raw edge.



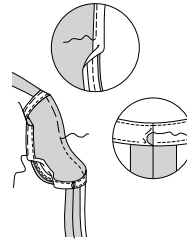
67. Open out one folded edge of bias tape; press out crease and preshape tape to match curve of armhole by pressing lightly.



68. Pin bias tape to armhole edge, having raw edges even, turning in ends to meet at side seam, as shown. Stitch in 3/8" (1cm) seam. Trim seam to a scant 1/4" (6mm).

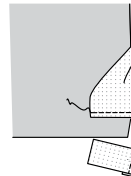


69. UNDERSTITCH bias tape. Turn bias tape to inside along seam. Press. Baste in place close to inner edge of tape. SLIPSTITCH ends. On outside, stitch as basted.

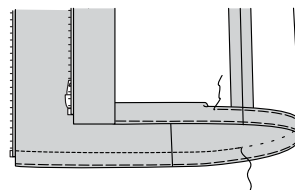


FINISHING

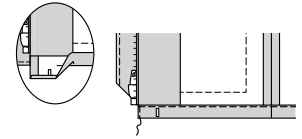
70. VIEW A- Turn lower edge of facing to outside along seam. Stitch across facing 1" (2.5 cm) above raw edge, being careful not to stitch over zipper. Trim, as shown.



71. Turn facing to inside, turning up hem. Baste close to fold. Trim hem to an even width. Turn in 1/4" (6mm) on raw edge. Baste hem in place close to upper edge, as shown. Press. Sew facings to hem. TOPSTITCH hem along upper basting, continuing to opening edges, ending at zipper seam.

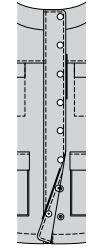


72. VIEW B, C- Press under remaining seam allowance on front edge below zipper. Press up hem on lower edge of garment, pressing under 1/4" (6mm) on raw edge. Stitch close to inner pressed edge, forming casing. EDGESTITCH front edge of casing.

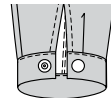


73. Apply knob half of snaps to LEFT front at markings, following manufacturer's directions. Apply socket half of snap to tab at markings.

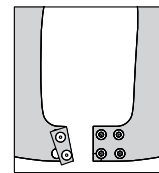
VIEWS A, B, C- EDGESTITCH zipper seam as far as possible, using an adjustable zipper foot.



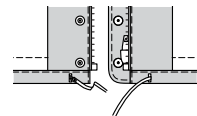
74. VIEW A, B- Apply knob half of snaps to cuff back at markings, following manufacturer's directions. Apply socket half of snap to cuff front at markings.



75. Apply knob half of snaps to LEFT hood front at markings, following manufacturer's directions. Apply socket half of snap to RIGHT hood front at markings.



76. DRAWSTRING HEM B- Attach a safety pin to one end of drawstring. Insert safety pin through one opening in casing, pulling out the other end. Trim as desired. Knot ends.





# Congrats!

You've completed your sewing adventure

---

**SHARE  
YOUR** LOOK



Post your pattern and tag us  
[@simplicity\\_creative\\_group](#) and [#simplicitypatterns](#)  
for a chance to be featured on our social media.

Look for more PDF patterns at [simplicity.com](https://www.simplicity.com)

Have a question or need help with your sewing project call us at  
1-800-782-0323

**McCall's**  
by **design**<sub>group</sub>

McCall's ©2024 a division of IG Design Group Americas Inc. • Atlanta, GA 30342 USA [www.thedesigngroup.com](http://www.thedesigngroup.com) • All Rights Reserved. [www.mccall.com](http://www.mccall.com) • Made in the U.S.A. Fabriqué aux États-Unis.

To be used for individual private home use only and not for commercial or manufacturing purposes. • A usage privé seulement et non à des fins commerciales ou de production en série. • Para uso privado solamente, no se puede utilizar con propósitos de comercialización o de producción en serie.