

McCall's

M8531



Designed and printed in USA

Average

MISSES' PANTS

Suggested Fabrics: Chino, Corduroy, Denim, Twill. **Interfacing:** Lightweight Fusible.

Notions: A,B,C: One 7" (18cm) zipper (cut to fit), six 5/8" (1.5cm) buttons.

Sizes	8	10	12	14	16	18	20	22	24	26
European	34	36	38	40	42	44	46	48	50	52

BODY MEASUREMENTS: Select pattern size based on body measurements

Bust	31½	32½	34	36	38	40	42	44	46	48	Ins.
Waist	24	25	26½	28	30	32	34	37	39	41	"
Hip-9" below waist	33½	34½	36	38	40	42	44	46	48	50	"
Back-neck to waist	15¾	16	16¼	16½	16¾	17	17¼	17½	17¾	18	"

Pants A	45**	2½	2½	2½	2½	2½	2¾	2¾	2½	2½	2½	Yds.
	60**	2½	2¼	2¾	2½	2½	2½	2½	2½	2½	2½	"
Interfacing	20"	5/8	5/8	5/8	5/8	5/8	¾	¾	¾	¾	¾	"
Pants B	45**	2½	2½	2½	2½	2½	2½	3	3	3	3	Yds.
	60**	2½	2½	2½	2½	2½	2½	2½	2½	2½	2½	"
Interfacing	20"	¾	¾	¾	7/8	7/8	7/8	7/8	1	1	1	"
Pants C	45**	2½	2¾	2¾	2¾	2¾	2¾	2½	2½	2½	2½	Yds.
	60**	2½	2¾	2½	2½	2½	2½	2½	2½	2½	2½	"
Interfacing	20"	¾	¾	¾	¾	¾	¾	¾	¾	¾	¾	"

FINISHED GARMENT MEASUREMENTS (Includes Design and Wearing Ease)

A,B,C Hip	35	36	37½	39½	41½	43½	45½	47½	49½	51½	Ins.
Width, each leg											
Pants A,B,C	29½	30	30½	31	31½	32	32½	33	33½	34	Ins.
Finished side length from waist											
Pants A,B,C (sit 2" below waist)	39¾	40	40¼	40½	40¾	41	41¼	41½	41¾	42	Ins.

*with nap **without nap

Moins Facile

PANTALONS POUR JEUNES FEMMES

Tissus Conseillés: Chino, Velours côtelé, Denim, Twill. **Entoilage:** Thermocollant léger.

Mercurie: A,B,C: 1 fermeture à glissière de 18cm (coupée pour ajuster), 6 boutons de 1.5cm.

Tailles	8	10	12	14	16	18	20	22	24	26
Françaises	36	38	40	42	44	46	48	50	52	54
Européen	34	36	38	40	42	44	46	48	50	52

MESURES DU CORPS: Choisissez la taille du patron basée sur les mesures du corps

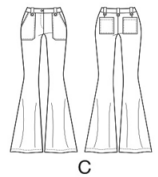
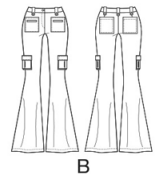
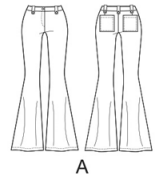
Poitrine	80	83	87	92	97	102	107	112	117	122	cm
Taille	61	64	67	71	76	81	87	94	99	104	"
Hanches (23cm au-dessous de la taille)											
	85	88	92	97	102	107	112	117	122	127	cm
Dos du cou à la taille	40	40.5	41.5	42	42.5	43	44	44.5	45	46	"

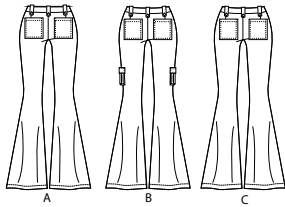
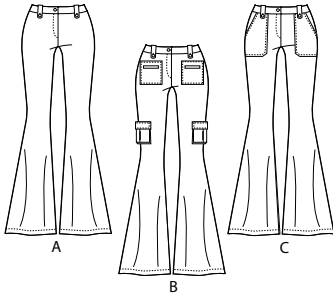
Pantalón A	115cm*	2.3	2.3	2.3	2.4	2.4	2.5	2.5	2.5	2.6	2.6	m
	150cm*	1.9	2.1	2.2	2.2	2.3	2.3	2.3	2.3	2.3	2.3	"
Entoilage	51cm	0.6	0.6	0.6	0.6	0.6	0.7	0.7	0.7	0.7	0.7	"
Pantalón B	115cm*	2.6	2.6	2.6	2.6	2.6	2.6	2.7	2.7	2.7	2.7	m
	150cm*	2.2	2.2	2.2	2.2	2.3	2.3	2.3	2.3	2.3	2.3	"
Entoilage	51cm	0.7	0.7	0.7	0.7	0.8	0.8	0.8	0.8	0.8	0.9	"
Pantalón C	115cm*	2.4	2.5	2.5	2.5	2.5	2.5	2.6	2.6	2.6	2.6	m
	150cm*	2.2	2.2	2.2	2.3	2.3	2.3	2.3	2.3	2.3	2.3	"
Entoilage	51cm	0.6m										"

MESURES DES VÊTEMENTS FINI (Motif et aisance de port compris)

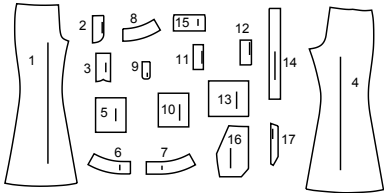
A,B,C Hanches	89	91	95	100	105	110	116	121	126	121	cm
Largeur, chaque jambe											
Pantalón A,B,C	75	76	77	79	80	81	83	84	85	86	cm
Longueur finie - côté, taille à l'ourlet											
Pantalón A,B,C (repose 2.5cm dessous de la taille)	101	102	102	103	104	104	105	105	106	107	cm

*avec sens **sans sens





17 PATTERN PIECES



- 1 Front-A,B,C
- 2 Right Fly Facing-A,B,C
- 3 Left Fly-A,B,C
- 4 Back-A,B,C
- 5 Back Pocket-A,B,C
- 6 Right Front Waistband-A,B,C
- 7 Left Front Waistband-A,B,C
- 8 Back Waistband-A,B,C
- 9 Tab-A,B,C
- 10 Upper Pocket-B
- 11 Welt-B
- 12 Upper Pocket Facing-B
- 13 Lower Pocket-B
- 14 Gusset-B
- 15 Flap-B
- 16 Front Pocket-C
- 17 Front Pocket Facing-C

PATTERN MARKINGS

- GRAINLINE:** Place on straight grain of fabric, parallel to selvage or fold.
- FOLDLINE:** Place line on fold of fabric.
- BUTTONHOLE MARKING:** Indicates exact length and placement of buttonholes.
- BUTTON MARKING:** Indicates button placement.
- NOTCHES AND SYMBOLS:** For matching seams and construction details.
- Indicates the Bustline, Waistline, Hip and/or Biceps.** Measurements refer to circumference of Finished Garment (Body Measurement + Wearing Ease + Design Ease). Adjust pattern if necessary. The measurement excludes pleats, tucks, darts and seam allowances.
- SEAM ALLOWANCE:** 5/8" (1.5cm) included unless otherwise indicated, but not printed on tissue.

ADJUST IF NECESSARY

- Lengthen or Shorten at adjustment lines (==) or where indicated on pattern. If substantial length is added, you may need to purchase additional fabric.
- TO SHORTEN:** Crease along adjustment line. Make a fold half the amount needed. Tape in place.
- TO LENGTHEN:** Slash between adjustment lines. Spread amount as needed, keeping edges parallel. Tape over paper.
- When Alteration lines are not on tissue, lengthen or shorten at lower edge.

CUTTING AND MARKING

- SHRINK FABRIC** if not labeled pre-shrunk. Press.
- CIRCLE LAYOUT** for View, Size, Fabric Width.
- Use **WITH NAP** layout for fabrics with one-way designs, nap, pile or surface shading. Because most knits have surface shading, a with nap layout is used.
- For **DOUBLE THICKNESS (WITH FOLD)** - fold fabric with right sides together.
- * DOUBLE THICKNESS (WITHOUT FOLD)** - For fabrics with nap, fold fabric crosswise, right sides together. Mark as shown. Cut along crosswise fold of fabric (A). Turn upper layer 180° so arrows go in same direction and place over lower layer, right sides together (B).
- For **SINGLE THICKNESS** - place fabric right side up. (For Fur Pile fabrics, place pile side down.)
- ★ Cut other pieces first, allowing enough fabric to cut this piece.** Open fabric. For "Cut 1" pieces, cut piece once on single layer of fabric with piece face up on right side of fabric.
- Pattern may have cutting lines for several sizes. Select the proper cutting line or pattern pieces for your size.
- Before **CUTTING** place all pieces on fabric according to layout. Pin. (Layouts show approximate position of pattern pieces; position may vary according to your pattern size.) Cut **ACCURATELY**, cutting notches outward.
- Before removing pattern, **TRANSFER MARKINGS** and lines of construction to Wrong Side of fabric, using the Pin and Chalk Pencil method or Tracing Paper and Dressmaker Wheel. Markings needed on right side of fabric should be thread traced.
- NOTE:** Broken-line boxes (a| b| c|) in layouts represent pieces cut by measurements provided.

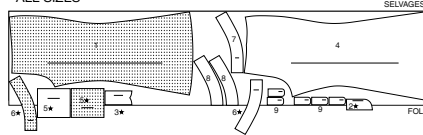
CUTTING LAYOUTS

RIGHT SIDE OF PATTERN	WRONG SIDE OF PATTERN	RIGHT SIDE OF FABRIC	WRONG SIDE OF FABRIC
-----------------------	-----------------------	----------------------	----------------------

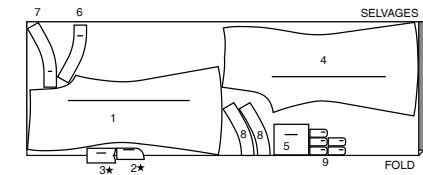
PANTS A

USE PIECES: 1 2 3 4 5 6 7 8 9

45" (115 CM)
WITH NAP
ALL SIZES



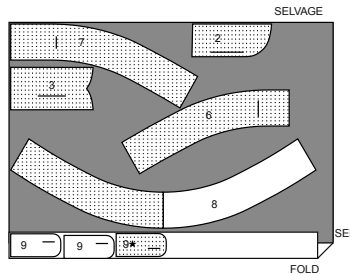
60" (150 CM)
WITH NAP
ALL SIZES



INTERFACING A

USE PIECES: 2 3 6 7 8 9

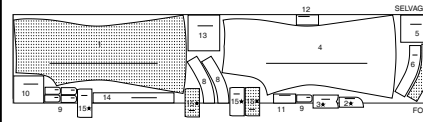
20" (51 CM)
WITHOUT NAP
ALL SIZES



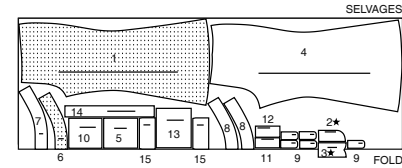
PANTS B

USE PIECES: 1 2 3 4 5 6 7 8 9 10 11 12 13 14 15

45" (115 CM)
WITH NAP
ALL SIZES



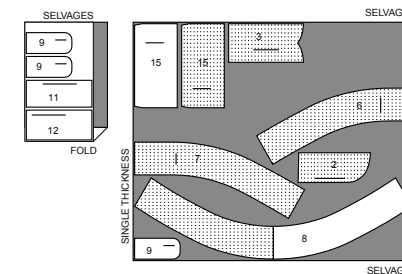
60" (150 CM)
WITH NAP
ALL SIZES



INTERFACING B

USE PIECES: 2 3 6 7 8 9 11 12 15

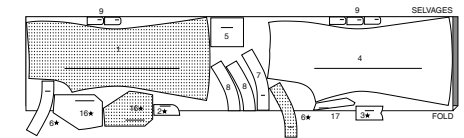
20" (51 CM)
WITHOUT NAP
ALL SIZES



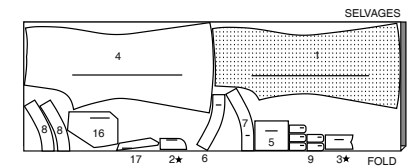
PANTS C

USE PIECES: 1 2 3 4 5 6 7 8 9 16 17

45" (115 CM)
WITH NAP
ALL SIZES



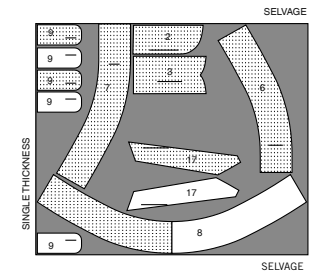
60" (150 CM)
WITH NAP
ALL SIZES



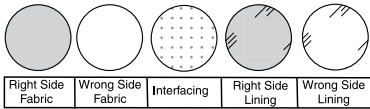
INTERFACING C

USE PIECES: 2 3 6 7 8 9 16

20" (51 CM)
WITHOUT NAP
ALL SIZES

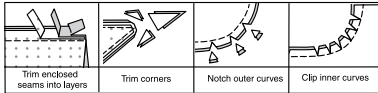


SEWING INFORMATION
FABRIC KEY



SEAM ALLOWANCES

Use 1/4" (6mm) seam allowances unless otherwise indicated.



PIN AND FIT

Pin or baste seams, **RIGHT SIDE TOGETHER**, matching notches. Fit garment before stitching major seams.

PRESS

Press seam allowances flat; then open unless otherwise stated. Clip where necessary so they lie flat.

GLOSSARY

VIDEO SEWING METHODS

Sewing methods shown in **BOLD TYPE** are defined below:

EDGE STITCH - See **Machine Stitches**: "how to edgestitch" video.

FINISH - See **Seams**: "how to finish seam allowances" video.

REINFORCE - See **Machine Stitches**: "how to reinforce" video.

STAYSTITCH - See **Machine Stitches**: "how to do stay-stitching" video.

STITCH IN THE DITCH - See **Machine Stitches**: "how to stitch in the ditch" video.

TOPSTITCH - See **Machine Stitches**: "how to topstitch" video.

TRIM - See **Seams**: "How to Sew: Trim, Clip, and Layer Seams" video.

UNDERSTITCH - See **Machine Stitches**: "how to understitch" video.

SEWING TUTORIALS



Build your skills viewing short, easy-to-follow videos at simplicity.com/sewingtutorials

PATTERN PIECES WILL BE IDENTIFIED BY NUMBERS THE FIRST TIME THEY ARE USED.

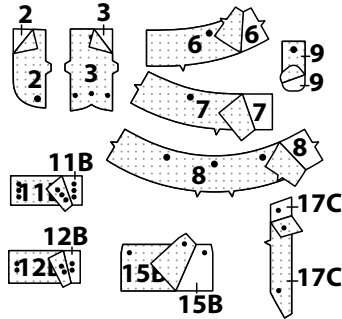
STITCH SEAMS WITH RIGHT SIDES TOGETHER UNLESS OTHERWISE STATED.

PANTS A, B, C

NOTE: The first view mentioned will be shown, unless otherwise mentioned.

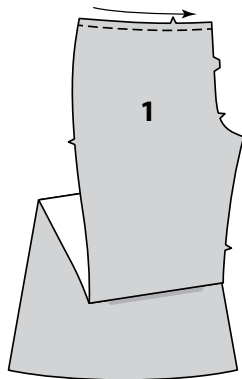
INTERFACING

1. Fuse interfacing to wrong side of each matching FABRIC section, following manufacturer's instructions.



FRONT

2. **STAYSTITCH** upper edge of FRONT (1), in direction of arrows.



Construct fly front as follows:

3. **A**-Stitch front sections, **RIGHT** sides together at center front between large dot and notch.

B-Turn in left front opening edge along foldline; press.

C-Place closed zipper (face up) under left front opening edge, having pressed edge close to zipper teeth and upper zipper stop 1/8"(3mm) below waist seamline. Using a zipper foot, baste close to pressed edge.

D-With **RIGHT** sides together, fold **LEFT FLY** (3) in half lengthwise having raw edges even. Stitch lower edge. **TRIM**. Turn. Press. Baste raw edges.

E-On **INSIDE**, pin left fly to left front opening edge (over zipper), matching notches and small dots, having raw edges even. Baste along previous basting for zipper.

F-On **OUTSIDE**, using a zipper foot, stitch close to pressed edge of front through all layers.

G-FINISH curved outer edge of **RIGHT FLY FACING** (2). Pin fly facing to right front opening edge, matching notches, and large dots. Stitch, ending at large dot. Trim. **UNDERSTITCH** fly facing. Turn facing to inside.

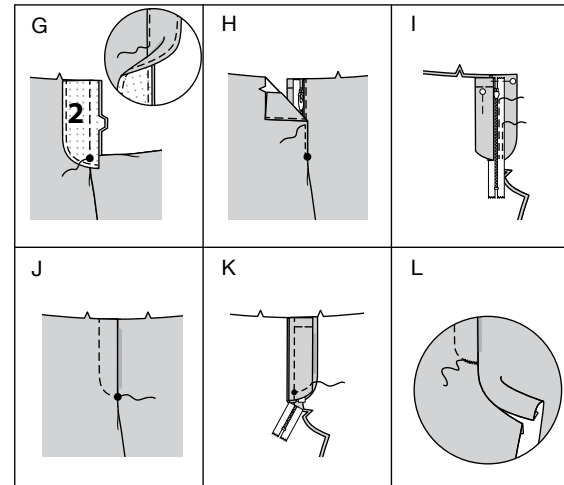
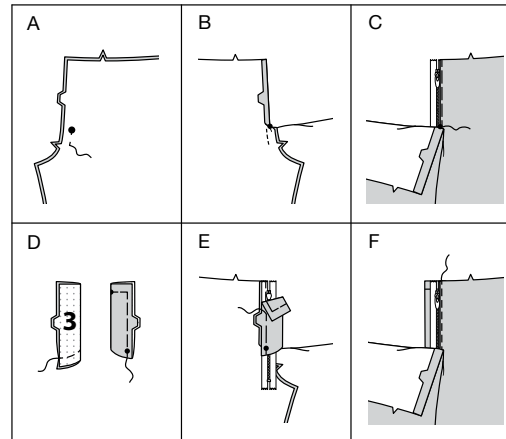
H-Lap right front over left, matching centers. Baste close to edge through all thicknesses.

I-Pin left fly out of the way. Open out fly facing. Pin remaining zipper tape to fly facing, keeping right front free. Using a zipper foot, stitch in place close to zipper teeth and along center of zipper tape.

J-Turn facing down. On **OUTSIDE**, stitch right front along stitching line, keeping left fly free.

K-Turn left fly back in place. On **INSIDE**, hand tack fly and facing together at lower edge, as shown. Trim away excess zipper tape even with lower edge of fly, if needed.

L-If desired, on **OUTSIDE**, machine-stitch a bar tack across lower end of fly through all thicknesses.

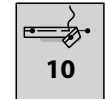


View B: Front Pocket

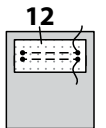
4. Fold **WELT** (11), **WRONG** sides together, along foldline, having raw edges even. Baste long edge. Trim basted seam allowances to 1/4"(6mm).



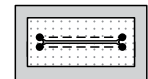
5. On **OUTSIDE**, pin welt to **UPPER POCKET** (10), placing seamline, along lower stitching line, with seam allowances above, matching small dots. Baste along stitching line between small dots.



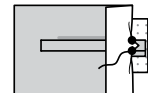
6. Pin **UPPER POCKET FACING** (12) to upper pocket, over welt, matching stitching lines. Stitch along upper and lower stitching lines between small dots.



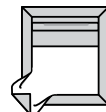
7. Slash upper pocket and facing between stitching and diagonally to corners.



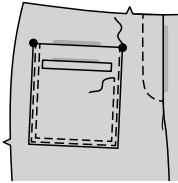
8. Turn facing to **INSIDE**, turning up welt. Bring triangular ends and ends of welt to **INSIDE**. Press. Fold back side edges of upper pocket and stitch triangular ends and ends of welt to facing.



9. Turn under 5/8"(1.5cm) seam allowances on outer edges of upper pocket, folding in fullness at corners. Press.

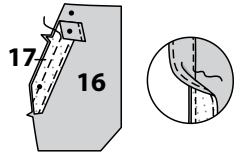


10. Pin upper pocket to front matching large dots. **EDGESTITCH** and **TOPSTITCH** outer edges of pocket.

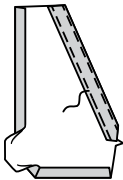


View C: Front Pocket

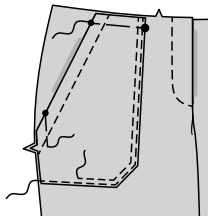
11. **FINISH** long unnotched edge of **FRONT POCKET FACING** (17). Pin facing to **FRONT POCKET** (16), **RIGHT** sides together, matching notches and small dots. Stitch. **TRIM**. **UNDERSTITCH** facing.



12. Turn facing to inside. Press. Baste side edges of facing. Turn in seam allowances on inner and lower edges of pocket. Press. **TOPSTITCH** angled edge of pocket along basting.

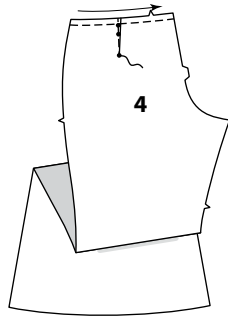


13. On **OUTSIDE**, pin front pocket to front along pocket line, matching large and small dots, having raw edges even. **EDGESTITCH** and **TOPSTITCH** inner and lower edges of pocket. Baste side and upper edges together.



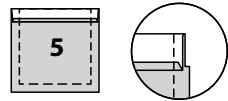
BACK AND REMAINING SEAMS

14. Stitch **DART** in **BACK** (4). Press dart towards center. **STAYSTITCH** upper edge of back, in direction of arrows.

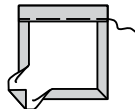


15. Press under 1/4" (6mm) on upper edge of **BACK POCKET** (5).

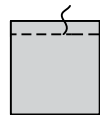
Turn upper edge of pocket to **OUTSIDE** along foldline, forming facing. Stitch ends and along seamline. Trim seam allowances in facing area as shown.



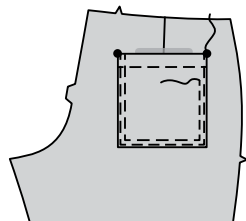
16. Turn facing to **INSIDE**, turning in remaining seam allowances along stitching, folding in corners diagonally. Press. Baste close to inner edge of facing.



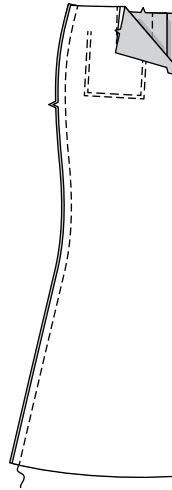
17. **TOPSTITCH** pocket along basting.



18. With **RIGHT** sides up, pin back pocket to back along pocket line, matching large dots. **EDGESTITCH** and **TOPSTITCH** sides and lower edges of pocket.



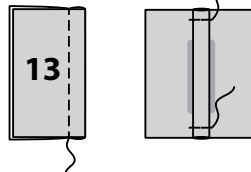
19. Stitch back to front at sides.



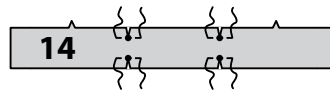
VIEW C POCKETS

20. To make pleat on **LOWER POCKET** (13), fold pocket in half lengthwise, **WRONG** sides together, matching stitching lines. Stitch along stitching lines.

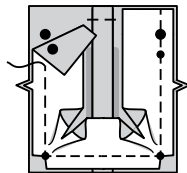
Press pleat flat. Baste upper and lower edges.



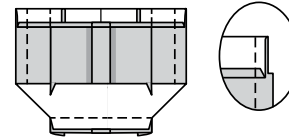
21. **REINFORCE** long edges of **GUSSET** (14) through inner small dots, as shown. Clip to small dots.



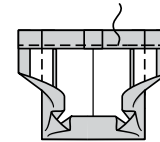
22. With **RIGHT** sides together, pin gusset to pocket at sides and lower edges, matching notches, and large and small dots. Stitch, pivoting at inner small dots at corners. Trim corners. Press seam toward pocket.



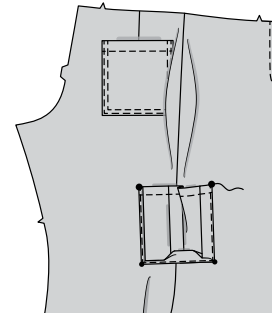
23. Press under 1/4" (6mm) on upper edge of pocket and gusset. Turn upper edge to **OUTSIDE** along foldline, forming facing. Stitch ends and along seamline. Trim facing seam allowance as shown.



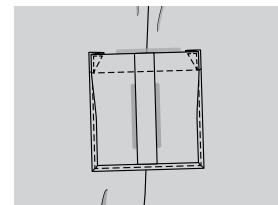
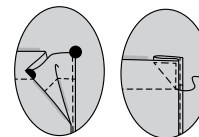
24. Turn facing to inside, turning in seam allowance on side and lower edges of gusset. Press. Baste inner edge of facing. **TOPSTITCH** along basting.



25. Pin pocket to front and back of pants over side seam, along pocket line, matching large dots on gusset to large dots on pants. **EDGESTITCH** side and lower edges of gusset.



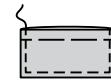
26. To pleat pocket, on **OUTSIDE**, bring large dots together, as shown. Press. Pin to hold in place. Stitch a triangle at upper edge of pockets through all layers.



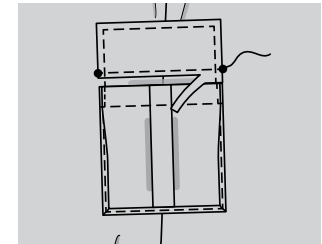
27. For each flap, pin one **FLAP** (15) section with interfacing to one without, **RIGHT** sides together. Stitch sides and lower edges, leaving upper edge open. **TRIM**.



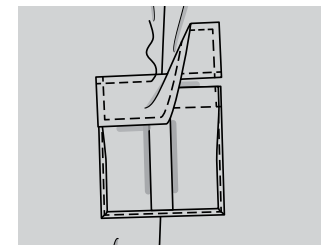
28. Turn right side out. Press. Baste raw edges together. **TOPSTITCH** finished edges.



29. Pin flaps to pants, matching small dots, placing seamline along flap line with seam allowance below the line. Stitch between small dots. Trim flap seam allowance to a scant 1/4" (6mm), being careful not to cut pants.

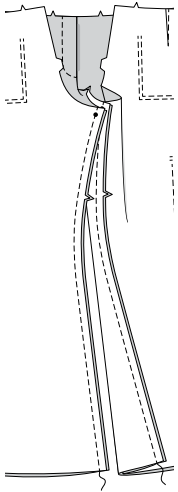


30. Turn flap down, press. **TOPSTITCH** upper edge of flap, encasing trimmed edges.

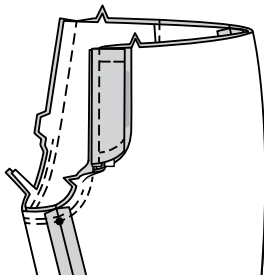


CONTINUE AS FOLLOWS FOR
VIEWS A, B, C

31. Pin back to front at inner leg seam, matching small dots. Stitch, stretching back to fit.

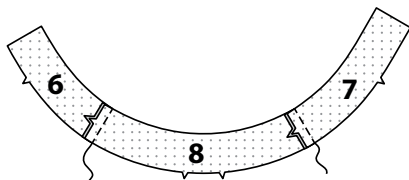


32. With RIGHT sides together, insert one leg INSIDE the other. Pin remainder of crotch seam, matching inner leg seams, notches, and small dots. Stitch to notch on front. Stitch again 1/4" (6mm) away in seam allowances between notches. Trim close to second stitching between notches.

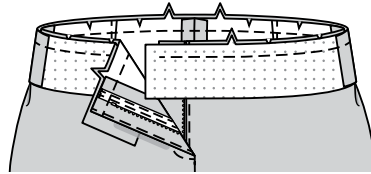


WAISTBAND

33. With RIGHT sides together, stitch interfaced RIGHT FRONT WAISTBAND (6) and LEFT FRONT WAISTBAND (7) to BACK WAISTBAND (8) at sides. Remaining waistband sections will be used as facings.



34. With RIGHT sides together, pin waistband to upper edge of pants matching notches, centers, and seams, having raw edges even. Baste, clipping to stay-stitching, as needed. Stitch. TRIM. Press seam toward band, pressing band out.
NOTE: Waistband extends 5/8" (1.5cm) beyond front opening edges.



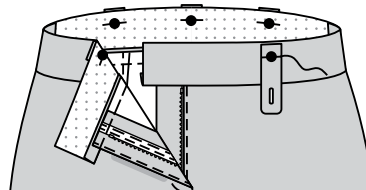
35. For each tab, pin a TAB (9) with interfacing to one without, matching large dots, having raw edges even. Stitch, leaving straight upper edge open. TRIM.



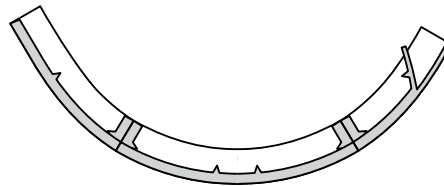
36. Turn RIGHT sides out. Press. Baste raw edges together. Make buttonhole at marking.



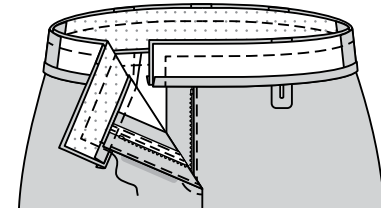
37. Pin tabs to upper edge of waistband matching large dots, having raw edges even. Baste.



38. Stitch side seams of waistband FACING sections. Press under 1/2" (1.3cm) on notched edge of facing. Trim to 1/4" (6mm).

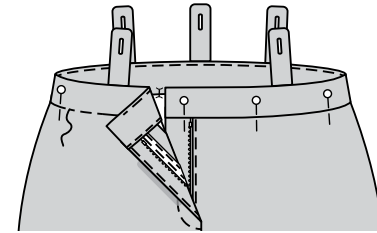


39. With RIGHT sides together, pin facing to waistband matching centers and seams. Stitch upper and front edges. TRIM.



40. UNDERSTITCH facing.

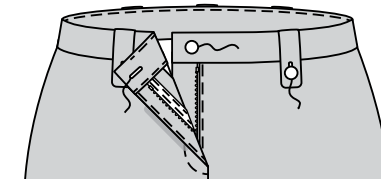
Turn facing to INSIDE. Press. On INSIDE, pin pressed edge of waistband facing over seam, placing pins on OUTSIDE. On OUTSIDE, STITCH IN THE DITCH of waistband seam, catching in pressed edge of facing on INSIDE, keeping tabs free.



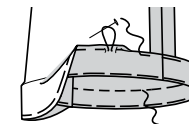
FINISHING

41. Make buttonhole in right front waistband at marking. Sew button to left front waistband at marking.

Sew buttons to front and back at markings. Button tabs to buttons.



42. Machine baste 1/4" (6mm) from lower edge of pants. Turn up 1" (2.5cm) hem on lower edge of pants. Press. Turn under 1/4" (6mm) on raw edge, pulling up ease to fit. Press. Baste close to inner pressed edge of hem. On Outside, stitch along upper basting.





Congrats!

You've completed your sewing adventure

**SHARE
YOUR** LOOK



Post your pattern and tag us
[@simplicity_creative_group](#) and [#simplicitypatterns](#)
for a chance to be featured on our social media.

Look for more PDF patterns at [simplicity.com](https://www.simplicity.com)

Have a question or need help with your sewing project call us at
1-800-782-0323

McCall's
by **design**_{group}

McCall's ©2024 a division of IG Design Group Americas Inc. • Atlanta, GA 30342 USA www.thedesigngroup.com • All Rights Reserved. www.mccall.com • Made in the U.S.A. Fabriqué aux États-Unis.
To be used for individual private home use only and not for commercial or manufacturing purposes. • A usage privé seulement et non à des fins commerciales ou de production en série. • Para uso privado solamente, no se puede utilizar con propósitos de comercialización o de producción en serie.