

McCall's

M8530

Designed and
printed in USAScan QR code for a Sew-Along video tutorial.
Scannez le code QR pour un didacticiel vidéo de couture.

Average

MISSES' TOPS

Suggested Fabrics: Challis, Charmeuse, Crepe de Chine, Georgette. **Interfacing:** Lightweight Fusible.**Notions:** **A,B,C:** One 12" (30cm) invisible zipper (adjust to fit). **Also for A,C:** 1½ yd. (1.3m) of 1¼" (3cm) scalloped lace trim. **Also for A:** ¾ yd. (0.7m) of 3" (8cm) double-edge scalloped lace trim, one pkg. of ½" (1.3cm) single fold bias tape. **Also for C:** 2¼ yds. (2.1m) of 3" (8cm) double-edge scalloped lace trim, 1 yd. (0.9m) of ¾" (1cm) satin ribbon.

Sizes	8	10	12	14	16	18	20	22	24	26
European	34	36	38	40	42	44	46	48	50	52

BODY MEASUREMENTS: Select pattern size based on body measurements

Bust	31½	32½	34	36	38	40	42	44	46	48	Ins.
Waist	24	25	26½	28	30	32	34	37	39	41	"
Hip-9" below waist	33½	34½	36	38	40	42	44	46	48	50	"
Back-neck to waist	15¾	16	16¼	16½	16¾	17	17¼	17½	17¾	18	"

Interfacing A,B,C

	20"	½	½	½	½	½	½	½	¾	¾	¾	Yd.
Top A	45"*	1½	1½	1½	1½	1½	1½	1½	1½	1½	1½	Yds.
	60"*	¾	¾	1	1	1	1	1½	1½	1½	1½	"
Top B	45"*	1¼	1¼	1¼	1½	1½	1½	1½	1½	1½	1½	Yds.
	60"*	1	1	1	1½	1½	1½	1½	1½	1½	1½	"
Top C	45"*	1¾	1¾	1¾	1¾	1¾	2	2	2½	2½	2½	Yds.
	60"*	1¾	1¾	1¾	1½	1½	1½	1½	1½	1½	1½	"

FINISHED GARMENT MEASUREMENTS (Includes Design and Wearing Ease)

A,B,C Bust	35½	36½	38	40	42	44	46	48	50	52	Ins.
A,B,C Waist	31	32	33½	35½	37½	39½	41½	43½	45½	47½	"
Width, lower edge											
Top A,B,C	35	36	37½	39½	41½	43½	45½	47½	49½	51½	Ins.
Finished back length from base of neck											
Top A,B,C	21¼	21½	21¾	22	22¼	22½	22¾	23	23¼	23½	Ins.

*with nap **without nap

Moins Facile

HAUTS POUR JEUNES FEMMES

Tissus Conseillés: Challis, Charmeuse, Crêpe de Chine, Crêpe georgette. **Entoilage:** Thermocollant léger.**Mercerie:** **A,B,C:** 1 fermeture à glissière invisible de 30cm (adaptez pour ajuster). **Aussi pour A,C:** 1.3m de garniture de dentelle à bord festonné de 3cm. **Aussi pour A:** 0.7m de garniture de dentelle festonnée à double bord de 8cm, 1 paquet de ruban de biais simple de 1.3cm. **Aussi pour C:** 2.1m de garniture de dentelle festonnée à double bord de 8cm, 0.9m de ruban de satin de 1cm.

Tailles	8	10	12	14	16	18	20	22	24	26
Françaises	36	38	40	42	44	46	48	50	52	54
Européen	34	36	38	40	42	44	46	48	50	52

MESURES DU CORPS: Choisissez la taille du patron basée sur les mesures du corps

Poitrine	80	83	87	92	97	102	107	112	117	122	cm
Taille	61	64	67	71	76	81	87	94	99	104	"
Hanches (23cm au-dessous de la taille)											
	85	88	92	97	102	107	112	117	122	127	cm
Dos du cou à la taille	40	40.5	41.5	42	42.5	43	44	44.5	45	46	"

Entoilage A,B,C

	51cm	0.5	0.5	0.5	0.5	0.5	0.5	0.5	0.5	0.5	0.6	m
Haut A	115cm*	1.0	1.0	1.0	1.0	1.1	1.3	1.3	1.3	1.4	1.4	m
	150cm*	0.8	0.8	0.8	0.9	0.9	0.9	0.9	1.0	1.0	1.0	"
Haut B	115cm*	1.0	1.1	1.1	1.3	1.3	1.4	1.4	1.5	1.5	1.5	m
	150cm*	0.9	0.9	0.9	1.0	1.0	1.0	1.1	1.1	1.1	1.1	"
Haut C	115cm*	1.6	1.6	1.6	1.7	1.7	1.8	1.8	1.9	1.9	2.1	m
	150cm*	1.3	1.3	1.3	1.4	1.4	1.4	1.5	1.5	1.5	1.5	"

MESURES DES VÊTEMENTS FINI (Motif et aisance de port compris)

A,B,C Poitrine	90	93	97	102	107	112	117	122	127	132	cm
A,B,C Taille	79	81	85	90	95	100	105	110	116	121	"
Largeur à l'ourlet											
Haut A,B,C	89	91	95	100	105	110	116	121	126	131	cm
Longueur finie – dos, votre nuque à l'ourlet											
Haut A,B,C	54	55	55	56	57	57	58	58	59	60	cm

*avec sens **sans sens



A



B



C

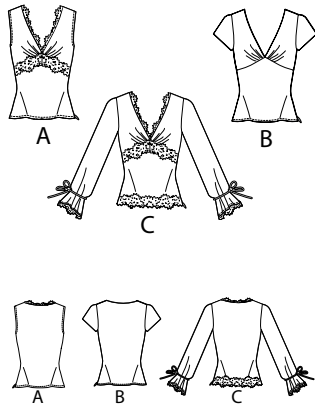
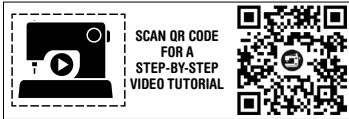
M8530

Page 1 of 4

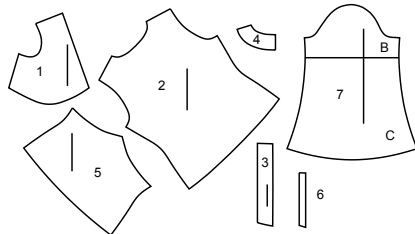
McCall's®

English

1-800-782-0323

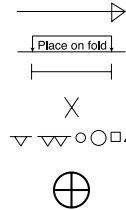


7 PATTERN PIECES



- 1 Bodice Front-A,B,C
2 Back-A,B,C
3 Front Facing-A,B,C
4 Back Facing-A,B,C
5 Front-A,B,C
6 Guide for Trim A,C
7 Sleeve-B,C

PATTERN MARKINGS



GRAINLINE: Place on straight grain of fabric, parallel to selvage or fold.

FOLDLINE: Place line on fold of fabric.

BUTTONHOLE MARKING: Indicates exact length and placement of buttonholes.

BUTTON MARKING: Indicates button placement.

NOTCHES AND SYMBOLS: For matching seams and construction details.

Indicates the Bustline, Waistline, Hip and/or Biceps. Measurements refer to circumference of Finished Garment (Body Measurement + Wearing Ease + Design Ease). Adjust pattern if necessary. The measurement excludes pleats, tucks, darts and seam allowances.

SEAM ALLOWANCE: 5/8" (1.5cm) included unless otherwise indicated, but not printed on tissue.

ADJUST IF NECESSARY

Lengthen or Shorten at adjustment lines (==) or where indicated on pattern. If substantial length is added, you may need to purchase additional fabric.

TO SHORTEN: Crease along adjustment line. Make a fold half the amount needed. Tape in place.

TO LENGTHEN: Slash between adjustment lines. Spread amount as needed, keeping edges parallel. Tape over paper.

When Alteration lines are not on tissue, lengthen or shorten at lower edge.

CUTTING AND MARKING

SHRINK FABRIC if not labeled pre-shrunk. Press.

CIRCLE LAYOUT for View, Size, Fabric Width.

Use **WITH NAP** layout for fabrics with one-way designs, nap, pile or surface shading. Because most knits have surface shading, a with nap layout is used.

For **DOUBLE THICKNESS (WITH FOLD)** - fold fabric with right sides together.

*** DOUBLE THICKNESS (WITHOUT FOLD)** - For fabrics with nap, fold fabric crosswise, right sides together. Mark as shown. Cut along crosswise fold of fabric (A). Turn upper layer 180° so arrows go in same direction and place over lower layer, right sides together (B).

For **SINGLE THICKNESS** - place fabric right side up. (For Fur Pile fabrics, place pile side down.)

★ Cut other pieces first, allowing enough fabric to cut this piece. Open fabric. For "Cut 1" pieces, cut piece once on single layer of fabric with piece face up on right side of fabric.

Pattern may have cutting lines for several sizes. Select the proper cutting line or pattern pieces for your size.

Before **CUTTING** place all pieces on fabric according to layout. Pin. (Layouts show approximate position of pattern pieces; position may vary according to your pattern size.) Cut **ACCURATELY**, cutting notches outward.

Before removing pattern, **TRANSFER MARKINGS** and lines of construction to Wrong Side of fabric, using the Pin and Chalk Pencil method or Tracing Paper and Dressmaker Wheel. Markings needed on right side of fabric should be thread traced.

NOTE: Broken-line boxes (a! b! c!) in layouts represent pieces cut by measurements provided.

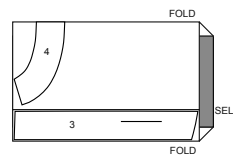
CUTTING LAYOUTS

RIGHT SIDE OF PATTERN	WRONG SIDE OF PATTERN	RIGHT SIDE OF FABRIC	WRONG SIDE OF FABRIC
-----------------------	-----------------------	----------------------	----------------------

INTERFACING A,B,C

USE PIECES: 3 4

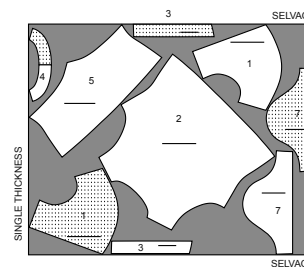
20" (51CM)
WITHOUT NAP
ALL SIZES



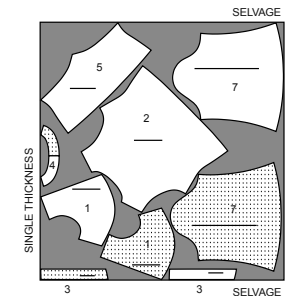
TOP B

USE PIECES: 1 2 3 4 5 7

45" (115CM)
WITH NAP
ALL SIZES



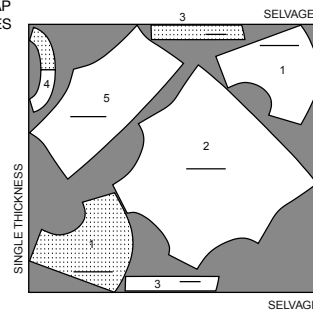
60" (150CM)
WITH NAP
ALL SIZES



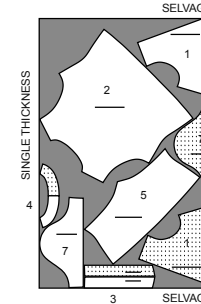
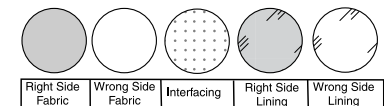
TOP A

USE PIECES: 1 2 3 4 5

45" (115CM)
WITH NAP
ALL SIZES

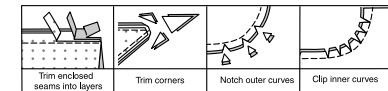


60" (150CM)
WITH NAP
ALL SIZES

SEWING INFORMATION
FABRIC KEY

SEAM ALLOWANCES

Use 5/8" (1.5cm) seam allowances unless otherwise indicated.



PIN AND FIT

Pin or baste seams, **RIGHT SIDE TOGETHER**, matching notches. Fit garment before stitching major seams.

PRESS

Press seam allowances flat; then open unless otherwise stated. Clip where necessary so they lie flat.

GLOSSARY

Sewing terms appearing in **BOLD TYPE** in Sewing Instructions are explained below.

EASE - Stitch along seamline, using long machine stitches. Pull thread ends when adjusting to fit.

NOTE: For sleeve caps, make a second row of long machine stitches 1/4" (6mm) away in seam allowance, for more control.

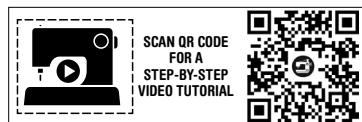
GATHER - Stitch along seamline and again 1/4" (6mm) away in seam allowance, using long machine stitches. Pull thread ends when adjusting to fit.

FINISH - Stitch 1/4" (6mm) from raw edge and finish with one of the following: (1) Pink OR (2) Overcast OR (3) Turn in along stitching and stitch close to fold OR (4) Overlock.

NARROW HEM - Turn in hem; press, easing in fullness if necessary. Open out hem. Turn in again so raw edge is along crease; press. Turn in along crease; stitch.

STAYSTITCH - Stitch 1/8" (3mm) from seamline in seam allowance (usually 1/2" (13mm) from raw edge).

UNDERSTITCH - Open out facing or underside of garment; stitch to seam allowance close to seam.



PATTERN PIECES WILL BE IDENTIFIED BY NUMBERS THE FIRST TIME THEY ARE USED.

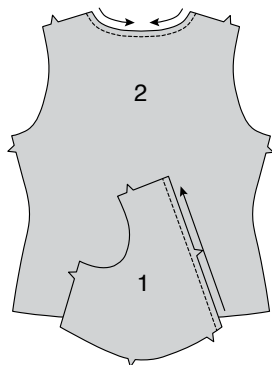
STITCH IN 5/8" (1.5CM) SEAMS WITH RIGHT SIDES TOGETHER UNLESS OTHERWISE STATED.

TOP A, B, C

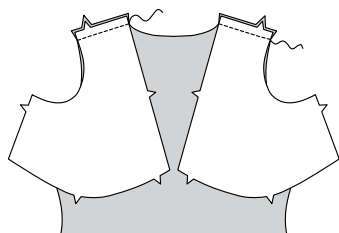
NOTE: The first view mentioned will be illustrated unless otherwise indicated.

FOR VIEW A - Trim away 1/4" (6mm) from armhole edges of bodice front and back before stitching seams.

1. STAYSTITCH neck edge of BODICE FRONT (1) and BODICE BACK (2) sections in direction of arrows. This stitching stays in permanently to prevent stretching on curved edges. (Shown only in the first illustration).



2. Stitch back to bodice fronts at shoulders.



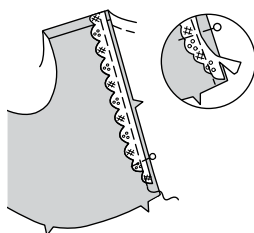
TRIM A, C

3. Place a pin on each side of neck 1-1/2" (3.8cm) from lower raw edge of front.

With RIGHT sides together, pin straight edge of scalloped lace to neck edge between pins, having straight edge of lace 1/4" (6mm) from raw edge, easing in fullness along curves.

At pins, gradually taper lace to nothing where seam lines cross, carefully shaping lace.

Baste lace in place close to seam line; trim edges even with front.



Tips for working with lace:

- When applying lace to curved edges, using your steam iron, pre-shape lace using your tissue patterns as a guide.
- Ease inserted lace along inner curve of neck so that it will lay flat when turned outward toward neck; test first.
- To achieve a seamless look when applying scalloped lace to hems, cut lace between motifs, arranging to have matching ends meet at one side seam.
- For another seamless option, pin lace over hem, overlapping ends at one side seam, matching motifs as best you can. Remove lace, keeping ends pinned. Using a small narrow stitch, zigzag along outer edge of overlapped lace, stitching through underlapped lace. Trim away fabric from underside and pin back on garment.
- To apply a scalloped edge over fabric, straight stitch in a straight line along inner corners of scallop OR zigzag along outer edge of scallop, using a small stitch. Trim away fabric from underside.

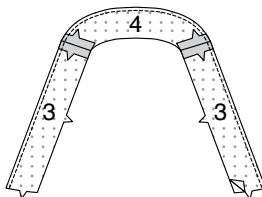
CONTINUE AS FOLLOWS FOR ALL VIEWS

4. Apply fusible interfacing to WRONG side of FRONT FACING (3) and BACK FACING (4) sections, following manufacturer's directions.

Stitch shoulder seams of facing sections.

FINISH unnotched edge.

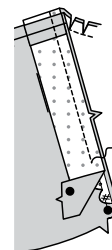
Your chosen finish will not be shown in the following illustrations.



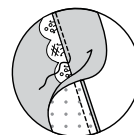
5. With RIGHT sides together and raw edges even, pin facing to neck edge (over lace for Views A, C), matching centers back, shoulder seams, and large dots.

Stitch neck edge.

Trim seam; clip curves.



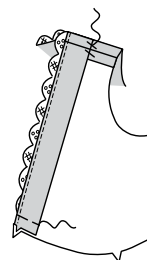
6. UNDERSTITCH by pressing facing and seam away from top, stitching through facing and seam allowances close to seam.



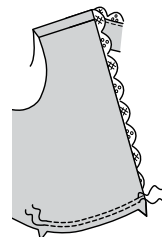
7. Turn facing to INSIDE, turning out trim for Views A, C. Press.

Baste facing to bodice at lower edge.

To keep facing from rolling to OUTSIDE, hand-tack it to seam allowances to secure in place.

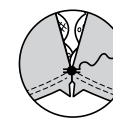


8. GATHER lower edge of bodice between notches along 5/8" (1.5cm) seam line and 1/4" (6mm) away within seam allowance.

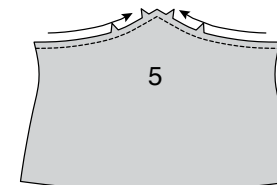


9. Bring ends of bodice together at center front, matching large dots.

Temporarily, hand-tack inner edges together at seam line.



10. STAYSTITCH upper edge of FRONT (5) in direction of arrows.



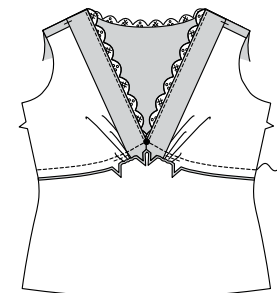
11. Pin front to bodice, matching notches and large dots at center front.

Pull up gathering stitches on bodice to fit; baste.

Stitch seam, pivoting with needle in fabric at large dot.

Press seam down, clipping front along curves if necessary.

Remove temporary tack.



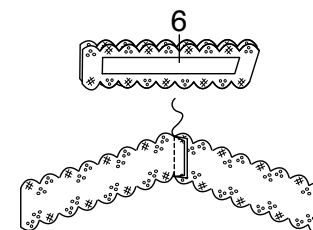
TRIM, A, C

12. Fold lace trim in half, matching scallops. Pin GUIDE FOR TRIM (6) on lace, positioning center front at inner corners of scallop as shown, or as desired.

Cut lace, allowing an extra 1" (2.5cm) on each end to allow for any changes in the bias fabric.

Stitch center front seam.

Trim seam.



13. On OUTSIDE, pin lace to front, matching centers front and placing inner corners on upper edge along seam, letting it conform to the bias fabric. Trim ends of lace even with side edges, if necessary.

Stitch through inner corners on upper and lower edge. Baste side edges.



NOTE: Stitch the invisible zipper using an invisible zipper foot. If the zipper is longer than the opening, it will be adjusted after it is inserted.

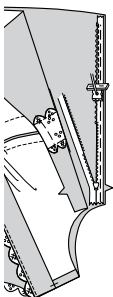
14. This zipper is sewn upside down in the LEFT side seam and opens from the bottom up. You will need to turn the top upside down.

Open zipper and press tape flat on WRONG side, unrolling coils. Do not press the coils. (Use a low iron setting.)

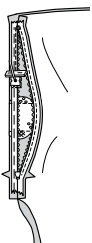
On OUTSIDE, pin LEFT side of zipper face down on BACK opening edge. Have the coil along the seam line, the tape within the seam allowance and the top stop 3/4" (2cm) from the lower edge of top, as shown.

Hand-baste along center of the tape, leaving zipper tape above top stop free.

Position zipper foot at top stop of zipper with LEFT groove of the foot over coil. Stitch along tape from top stop to notch, back-stitching to reinforce seam.



15. Pin remaining half of zipper to FRONT opening edge in same manner, making sure that the upper and lower edges of the top are even. Hand-baste along center of tape. Position zipper foot at top stop of zipper tape with RIGHT groove over coil. Stitch along tape from top stop to notch, back-stitching to reinforce seam.

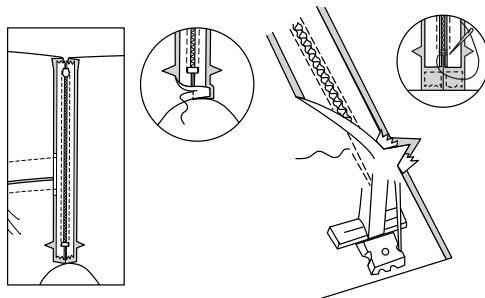


16. Close zipper and check that it is invisible from the OUTSIDE. With the top still in the upside-down position, pull the free ends of the zipper tape away from the seam allowance. Pin remaining LEFT side seam allowances together below zipper below top stop. Position zipper foot all the way to the LEFT so the needle goes down through the outer notch of the foot. Start stitching seam 1/4" (6mm) above lowest stitch and slightly to the LEFT. Stitch remainder of seam.

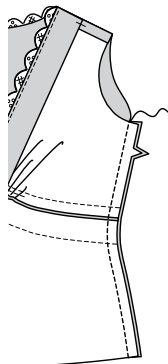
If the zipper is longer than the opening, using a strong thread, hand-sew a few small stitches across ends of coils at end of opening. Trim away lower end of zipper tape to within 5/8" (1.5cm) of hand-stitches.

TIP- Encase end of zipper near armhole with a piece of 1" (2.5cm) wide fabric remnant. Stitch close to all edges of cover.

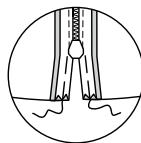
If you prefer, open out each seam allowance at end of zipper and stitch tape to seam allowance.



17. Stitch RIGHT side seam of top.



18. To hold free edges of zipper tape in place at lower edge of top, hand-baste tape in place, having inner edge in line with or just inside seam line, as shown.

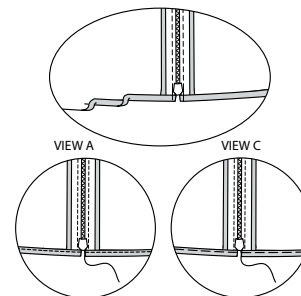


19. Press under 5/8" (1.5cm) hem allowance, over zipper tape.

To form **NARROW HEM**, press under raw edge to meet crease; press.

For View A- Stitch hem in place, clearing zipper teeth so that you can open and close zipper.

For View C- Baste hem in place, clearing zipper teeth so that you can open and close zipper.



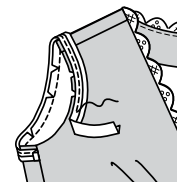
ARMHOLE A

20. Open out one edge of single fold bias tape.

With RIGHT sides together, pin tape to armhole edge having raw edges even, turning under and lapping one end at side seam.

Stitch in a 3/8" (1cm) seam.

Trim seam; clip curves.

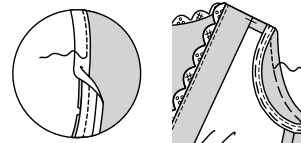


21. UNDERSTITCH tape.

Turn tape to INSIDE; press.

Baste close to inner edge of tape.

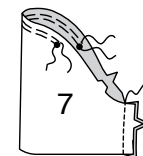
On OUTSIDE, top-stitch as basted.



CONTINUE AS FOLLOWS FOR VIEW B

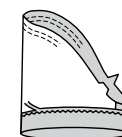
22. To **EASE** top of sleeve, using a long stitch, stitch along 5/8" (1.5cm) seam line between outer small dots and 1/4" (6mm) away within seam allowance.

Stitch underarm seam.



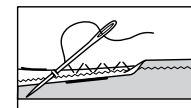
23. Press under 1-1/4" (3.2cm) hem on lower edge of sleeve.

To finish lower edge of sleeve, using a small zigzag stitch, stitch 1/4" (6mm) from raw edge. Trim close to stitching, being careful not cut through stitching. Alternately you can pink raw edge OR overlock raw edge, keeping the blade up if using a serger or pink raw edge.



24. To blind stitch hem, turn up hem allowance, turning down inner edge 1/4" (6mm) below edge of hem allowance. Fasten thread in hem edge. Make a small diagonal stitch by picking up one thread of top, then one thread of hem, as shown.

TIP- Use tiny zigzag stitches for finishing edge of charmeuse. Test on a remnant first; you do not want to see a ridge on the outside after the hem is sewn.

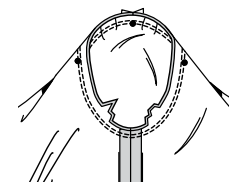


25. Turn sleeve RIGHT side out. Hold top WRONG side out with armhole toward you. With RIGHT sides together, pin sleeve to armhole edge with center small dot at shoulder seam, matching underarm seams, notches and remaining small dots. Pull up ease stitches to fit.

To distribute fullness evenly, slide fabric along bobbin threads until there are no puckers or tucks on the seam line. Baste. Stitch again 1/8" (3mm) from first stitching.

Trim seam below notches close to stitching.

Press only the seam allowance, shrinking out fullness.

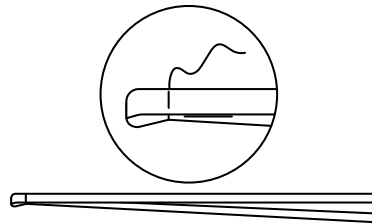


CONTINUE AS FOLLOWS FOR VIEW C

26. For each sleeve, cut one piece of ribbon, each at 31" (79cm) long.

Fold ribbon in half, having ends even.

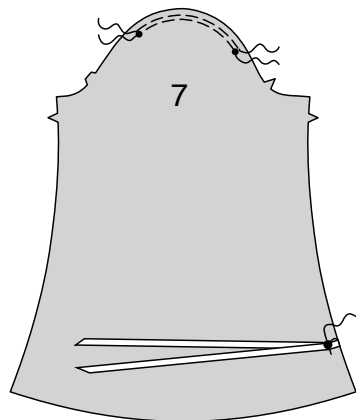
Baste a scant 5/8" (1.5cm) from fold edge.



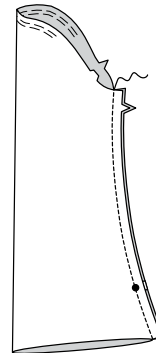
27. To **EASE** top of SLEEVE (6), using a long stitch, stitch along 5/8" (1.5cm) seam line between small dots and 1/4" (6mm) away within seam allowance.

Pin one ribbon to one side edge of sleeve at large dot, having fold edge even with raw edge. Stitch a scant 5/8" (1.5cm) from raw edges.

Cut ends at an angle.



28. Stitch underarm seam, matching large dots, being careful not to catch in free edges of ribbon.



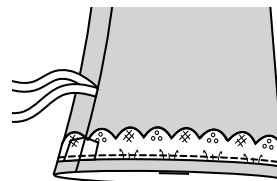
29. For each sleeve, cut one piece of lace the width of sleeve at lower raw edge, adding 1-1/4" (3.2cm) seam allowance.

Stitch ends in a 5/8" (1.5cm) seam.



30. On OUTSIDE, pin straight edge of lace 1/2" (1.5cm) above lower raw edge of sleeve, having scallops facing upward, matching seams.

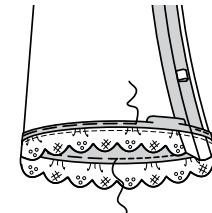
Stitch close to straight edge of lace.



31. Press trim away from sleeve, pressing up 5/8" (1.5cm) hem allowance on lower edge of sleeve.

Baste in a **NARROW HEM** on lower edge.

On OUTSIDE, stitch as basted; remove basting.

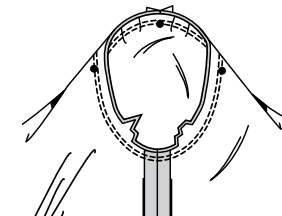


32. Turn sleeve RIGHT side out. Hold top WRONG side out with armhole toward you. With RIGHT sides together, pin sleeve to armhole edge with center small dot at shoulder seam, matching underarm seams, notches and remaining small dots. Pull up ease stitches to fit.

To distribute fullness evenly, slide fabric along bobbin threads until there are no puckers or tucks on the seam line. Baste. Stitch. Stitch again 1/8" (3mm) from first stitching.

Trim seam below notches close to stitching.

Press only the seam allowance, shrinking out fullness.

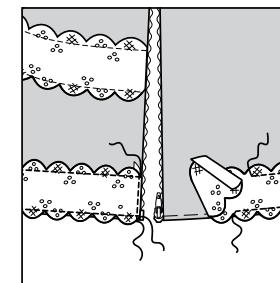


33. Open zipper.

Pin lace trim to lower edge of top, having lower inner corners slightly over basted hem, turning under ends at LEFT side seam.

Stitch through inner corners of trim, catching in hem on basted edge.

Remove basting. Machine or hand sew ends of lace in place.





Congrats!

You've completed your sewing adventure

SHARE YOUR LOOK



Post your pattern and tag us
[@simplicity_creative_group](#) and [#simplicitypatterns](#)
for a chance to be featured on our social media.

Look for more PDF patterns at [simplicity.com](https://www.simplicity.com)

Have a question or need help with your sewing project call us at
1-800-782-0323

McCall's
by **design**_{group}

McCall's ©2024 a division of IG Design Group Americas Inc. • Atlanta, GA 30342 USA www.thedesigngroup.com • All Rights Reserved. www.mccall.com • Made in the U.S.A. Fabriqué aux États-Unis.

To be used for individual private home use only and not for commercial or manufacturing purposes. • A usage privé seulement et non à des fins commerciales ou de production en série. • Para uso privado solamente, no se puede utilizar con propósitos de comercialización o de producción en serie.