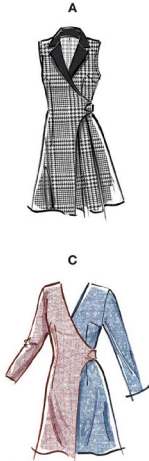


**McCall's**

M8528



Designed and printed in USA

Average

MISSES' BLAZER DRESSES												
<b>Suggested Fabrics:</b> Cotton Blends, Gabardine, Tweeds, Wool Blends. <b>Interfacing:</b> Lightweight Fusible.												
<b>Notions:</b> A, B, C: One 1½" (4cm) rectangle ring, one ½" (1.3cm) sew-on snap.												
<b>Sizes</b>	8	10	12	14	16	18	20	22	24	26		
<b>European</b>	34	36	38	40	42	44	46	48	50	52		
<b>BODY MEASUREMENTS: Select pattern size based on body measurements</b>												
<b>Bust</b>	31½	32½	34	36	38	40	42	44	46	48	Ins.	
<b>Waist</b>	24	25	26½	28	30	32	34	37	39	41	"	
<b>Hip-9" below waist</b>	33½	34½	36	38	40	42	44	46	48	50	"	
<b>Back-neck to waist</b>	15¾	16	16¼	16½	16¾	17	17¼	17½	17¾	18	"	
<b>A, B, C Interfacing</b> 20" - 1¾ yd.												
<b>Dress A</b>	45**	3¾	3¾	3¾	3½	3½	3½	3¾	4	4¾	4¾	Yds.
	60**	2¾	2½	2½	2¾	2¾	3	3	3¼	3¼	3¾	"
<b>Contrast (Collar, Lapel)</b>												
	45, 60** - ¾ yd.											
<b>Dress B</b>	45**	4¾	4¾	4¾	4¾	4¾	4¾	4¾	5	5½	Yds.	
	60**	3¾	3¾	3½	3¾	3¾	3¾	4	4	4¾	"	
<b>Dress C</b>	45**	1¾	1¾	1¾	1¾	1¾	1¾	2¼	2¼	2¼	Yds.	
	60**	1¾	1¾	1¾	1¾	1¾	1¾	1¾	1¾	1¾	"	
<b>Contrast (Left Bodice Front, Back, Left Front Facing, Back Facing, Sleeve, Skirt Left Front, Skirt Back)</b>												
	45**	1¾	1¾	1¾	1¾	1¾	1¾	1¾	2	2	Yds.	
	60**	1¾	1¾	1½	1½	1½	1½	1½	1½	1½	"	
<b>FINISHED GARMENT MEASUREMENTS (Includes Design and Wearing Ease)</b>												
<b>A, B, C Bust</b>	36	37	38½	40½	42½	44½	46½	48½	50½	52½	Ins.	
<b>A, B, C Waist</b>	28	29	30½	32½	34½	36½	38½	40½	42½	44½	"	
<b>C Hip</b>	41	42	43½	45½	47½	49½	51½	53½	55½	57½	"	
<b>Width, lower edge</b>												
<b>Dress C</b>	45	46	47½	49½	51½	53½	55½	57½	59½	61½	Ins.	
<b>Finished back length from base of neck</b>												
<b>Dress A, B, C</b>	34¾	35	35¼	35½	35¾	36	36¼	36½	36¾	37	Ins.	

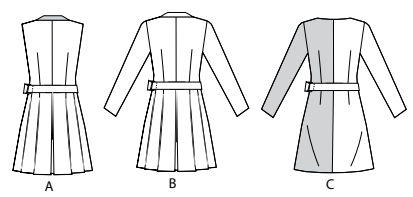
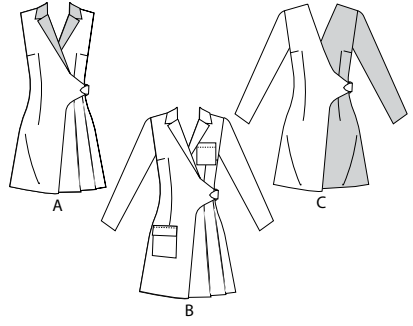
\*with nap \*\*without nap

Moins Facile

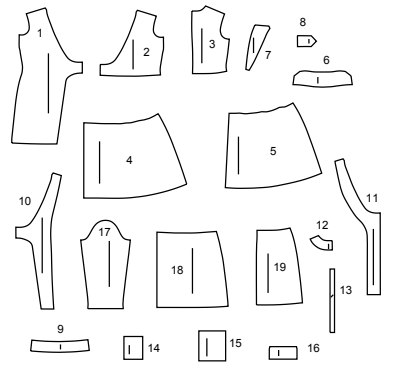
ROBES BLAZER POUR JEUNES FEMMES												
<b>Tissus Conseillés:</b> Cotonnades, Gabardine, Tweeds, Lainages. <b>Entoilage:</b> Thermocollant léger.												
<b>Merci:</b> A, B, C: 1 anneau rectangle de 4cm, 1 bouton-pression à coudre de 1.3cm.												
<b>Tailles</b>	8	10	12	14	16	18	20	22	24	26		
<b>Françaises</b>	36	38	40	42	44	46	48	50	52	54		
<b>Européen</b>	34	36	38	40	42	44	46	48	50	52		
<b>MESURES DU CORPS: Choisissez la taille du patron basée sur les mesures du corps</b>												
<b>Poitrine</b>	80	83	87	92	97	102	107	112	117	122	cm	
<b>Taille</b>	61	64	67	71	76	81	87	94	99	104	"	
<b>Hanches (23cm au-dessous de la taille)</b>												
	85	88	92	97	102	107	112	117	122	127	cm	
<b>Dos du cou à la taille</b>	40	40.5	41.5	42	42.5	43	44	44.5	45	46	"	
<b>A, B, C Entoilage</b> 51cm - 1.7m												
<b>Robe A</b>	115cm*	3.1	3.1	3.1	3.1	3.2	3.2	3.4	3.7	3.8	3.9	m
	150cm*	2.2	2.3	2.4	2.5	2.6	2.7	2.7	3.0	3.0	3.1	"
<b>Contraste (Col, le revers)</b>												
	115, 150cm* - 0.6m											
<b>Robe B</b>	115cm*	3.8	3.8	3.9	4.0	4.2	4.3	4.3	4.5	4.6	4.7	m
	150cm*	3.1	3.1	3.2	3.3	3.3	3.4	3.5	3.7	3.7	3.8	"
<b>Robe C</b>	115cm*	1.5	1.6	1.6	1.6	1.7	1.7	1.8	2.1	2.1	2.1	m
	150cm*	1.3	1.3	1.3	1.3	1.3	1.3	1.3	1.3	1.4	1.6	"
<b>Contrast (Devant gauche du corsage, Devant, Parementure du devant gauche, Parementures du dos, Manche, Jupe devant gauche, Jupe dos)</b>												
	115cm*	1.3	1.5	1.5	1.6	1.7	1.7	1.7	1.7	1.8	1.8	m
	150cm*	1.3	1.3	1.3	1.3	1.3	1.4	1.4	1.4	1.4	1.5	"
<b>MESURES DES VÊTEMENTS FINI (Motif et aisance de port compris)</b>												
<b>A, B, C Poitrine</b>	91	94	98	103	108	113	118	123	128	133	cm	
<b>A, B, C Taille</b>	71	74	77	83	88	93	98	103	108	113	"	
<b>C Hanches</b>	104	107	110	116	121	126	131	136	141	146	"	
<b>Largeur à l'ourlet</b>												
<b>Robe C</b>	114	117	121	126	131	136	141	146	151	156	cm	
<b>Longueur finie - dos, votre nuque à l'ourlet</b>												
<b>Robe A, B, C</b>	88	89	90	90	91	91	92	93	93	94	cm	

\*avec sens \*\*sans sens





**19 PATTERN PIECES**



- 1 RIGHT FRONT - A,B,C
- 2 LEFT BODICE FRONT - A,B,C
- 3 BACK - A,B,C
- 4 SKIRT LEFT FRONT - A,B
- 5 SKIRT BACK - A,B
- 6 COLLAR - A,B
- 7 LAPEL - A,B
- 8 TAB - A,B,C
- 9 BELT - A,B,C
- 10 RIGHT FRONT FACING - A,B,C
- 11 LEFT FRONT FACING - A,B,C
- 12 BACK FACING - A,B,C
- 13 ARMHOLE FACING - A
- 14 UPPER POCKET - B
- 15 LOWER POCKET - B
- 16 FLAP - B
- 17 SLEEVE - B,C
- 18 SKIRT LEFT FRONT - C
- 19 SKIRT BACK - C

**PATTERN MARKINGS**  
**GRAINLINE:** Place on straight grain of fabric, parallel to selvage or fold.  
**FOLDLINE:** Place line on fold of fabric.  
**BUTTONHOLE MARKING:** Indicates exact length and placement of buttonholes.  
**BUTTON MARKING:** Indicates button placement.  
**NOTCHES AND SYMBOLS:** For matching seams and construction details.  
 Indicates the Bustline, Waistline, Hip and/or Biceps. Measurements refer to circumference of Finished Garment (Body Measurement + Wearing Ease + Design Ease). Adjust pattern if necessary. The measurement excludes pleats, tucks, darts and seam allowances.  
**SEAM ALLOWANCE:** 5/8" (1.5cm) included unless otherwise indicated, but not printed on tissue.

**ADJUST IF NECESSARY**  
 Lengthen or Shorten at adjustment lines (==) or where indicated on pattern. If substantial length is added, you may need to purchase additional fabric.  
**TO SHORTEN:** Crease along adjustment line. Make a fold half the amount needed. Tape in place.  
**TO LENGTHEN:** Slash between adjustment lines. Spread amount as needed, keeping edges parallel. Tape over paper.  
 When Alteration lines are not on tissue, lengthen or shorten at lower edge.

**CUTTING AND MARKING**  
**SHRINK FABRIC** if not labeled pre-shrunk. Press.  
**CIRCLE LAYOUT** for View, Size, Fabric Width.  
 Use **WITH NAP** layout for fabrics with one-way designs, nap, pile or surface shading. Because most knits have surface shading, a with nap layout is used.  
 For **DOUBLE THICKNESS (WITH FOLD)** - fold fabric with right sides together.  
**\* DOUBLE THICKNESS (WITHOUT FOLD)** - For fabrics with nap, fold fabric crosswise, right sides together. Mark as shown. Cut along crosswise fold of fabric (A). Turn upper layer 180° so arrows go in same direction and place over lower layer, right sides together (B).  
 For **SINGLE THICKNESS** - place fabric right side up. (For Fur Pile fabrics, place pile side down.)

★ Cut other pieces first, allowing enough fabric to cut this piece. Open fabric. For "Cut 1" pieces, cut piece once on single layer of fabric with piece face up on right side of fabric.  
 Pattern may have cutting lines for several sizes. Select the proper cutting line or pattern piece for your size.  
 Before **CUTTING** place all pieces on fabric according to layout. Pin. (**Layouts show approximate position of pattern size; position may vary according to your pattern size.**) Cut **ACCURATELY**, cutting notches outward.  
 Before removing pattern, **TRANSFER MARKINGS** and lines of construction to Wrong Side of fabric, using the Pin and Chalk Pencil method or Tracing Paper and Dressmaker Wheel. Markings needed on right side of fabric should be thread traced.  
**NOTE:** Broken-line boxes (a| b| c|) in layouts represent pieces cut by measurements provided.

**CUTTING LAYOUTS**

RIGHT SIDE OF PATTERN	WRONG SIDE OF PATTERN	RIGHT SIDE OF FABRIC	WRONG SIDE OF FABRIC
-----------------------	-----------------------	----------------------	----------------------

**DRESS A**  
 USE PIECES: 1 2 3 4 5 8 9 10 11 12 13  
 45" (115CM) WITH NAP  
 SIZES 8 10 12 14 16 18  
 60" (150CM) WITH NAP  
 SIZES 20 22 24 26

**CONTRAST (COLLAR, LAPEL)**  
 USE PIECES: 6 7  
 45" (115CM) WITH NAP  
 ALL SIZES  
 60" (150CM) WITH NAP  
 ALL SIZES

45" (115CM) WITH NAP  
 SIZES 16 18 20 22 24 26  
 60" (150CM) WITH NAP  
 ALL SIZES

60" (150CM) WITH NAP  
 SIZES 8 10 12 14 16 18 20

**INTERFACING A**  
 USE PIECES: 6 7 8 9 10 11 12  
 20" (52CM) ALL SIZES

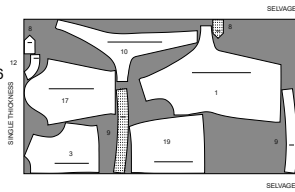
**INTERFACING B**  
 USE PIECES: 6 7 8 9 10 11 12 16  
 20" (52CM) ALL SIZES

60" (150CM) WITH NAP  
 SIZES 22 24 26

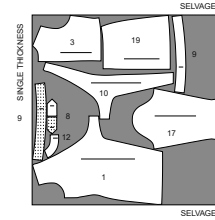
**DRESS B**  
 USE PIECES: 1 2 3 4 5 6 7 8 9 10 11 12 14 15 16 17  
 45" (115CM) WITH NAP  
 SIZES 8 10 12 14

**DRESS C**  
 USE PIECES: 1 3 8 9 10 12 17 19  
 45" (115CM) WITH NAP  
 SIZES 8 10 12 14

45" (115CM)  
WITH NAP  
SIZES 20 22 24 26

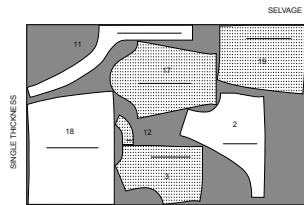


60" (150CM)  
WITH NAP  
ALL SIZES

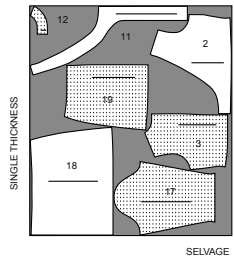


**CONTRAST (LEFT BODICE FRONT, BACK, LEFT FRONT FACING, BACK FACING, SLEEVE, SKIRT LEFT FRONT, SKIRT BACK)**  
USE PIECES: 2 3 11 12 17 18 19

45" (115CM)  
WITH NAP  
ALL SIZES

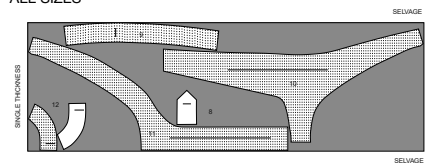


60" (150CM)  
WITH NAP  
ALL SIZES

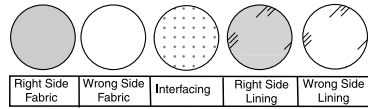


**INTERFACING C**  
USE PIECES: 8 9 10 11 12

20" (52CM)  
ALL SIZES

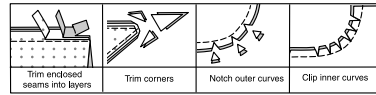


**SEWING INFORMATION**  
FABRIC KEY



**SEAM ALLOWANCES**

Use 5/8" (1.5cm) seam allowances unless otherwise indicated.



**PIN AND FIT**

Pin or baste seams, **RIGHT SIDE TOGETHER**, matching notches. Fit garment before stitching major seams.

**PRESS**

Press seam allowances flat; then open unless otherwise stated. Clip where necessary so they lie flat.

**GLOSSARY**

Sewing methods in **BOLD TYPE** have Sewing Tutorial Video available. Scan **QR CODE** to watch videos:

**DART** - See **sewing double pointed dart** video.

**DART** - See **sewing flat dart** video.

**EASE** - See **sewing two row gathers** video.

**EDGESTITCH** - See **how to edgestitch** video.

**FINISH** - Stitch 1/4" (6mm) from raw edge and finish with one of the following: (1) Pink OR (2) Overcast OR (3) Turn in along stitching and stitch close to fold OR (4) Overlock.

**NARROW HEM** - See **how to narrow hem** video.

**OPTIONAL FOR HEMS:** Apply Seam Binding.

**SLEEVE** - See **sewing a set in sleeve** video.

**STAYSTITCH** - See **how to do stay-stitching** video.

**TOPSTITCH** - See **how to topstitch** video.

**UNDERSTITCH** - See **how to understitch** video.

SEWING TUTORIALS



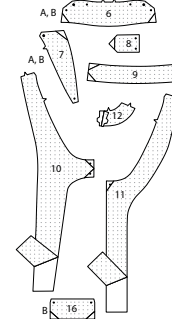
Build your skills viewing short, easy-to-follow videos at [simplicity.com/sewingtutorials](http://simplicity.com/sewingtutorials)

**DRESS A,B,C**

**NOTE:** Under each sub-heading, **View A** will be shown unless otherwise indicated.

**INTERFACING**

1. Trim corners of **INTERFACING** as shown. Pin **INTERFACING** to wrong side of each matching **FABRIC** section. Fuse, following manufacturer's instructions.



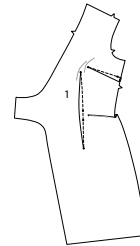
**FRONT AND BACK**

2. Stitch bust **DART** in **RIGHT FRONT** (1). See sewing flat dart video.

Press dart down.

Stitch remaining **DART** in front section. See sewing double pointed dart video.

Press darts toward center.

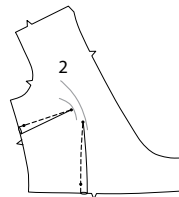


3. Stitch bust **DART** in **LEFT BODICE FRONT** (2). See sewing flat dart video.

Press dart down.

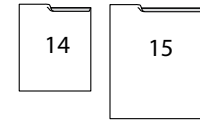
Stitch remaining **DART** in front section.

Press darts toward center.

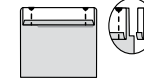


**4. VIEW B**

Turn in 1/4" (6mm) on upper edge of each **UPPER POCKET** (14) and **LOWER POCKET** (15). Press.



5. Turn upper edge to outside along foldline. Stitch ends. Trim.



6. Turn upper edge of pocket to inside, turning in remaining seam allowances and diagonally folding corners. Press.

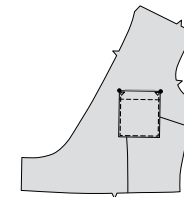
Baste close to inner pressed edge.



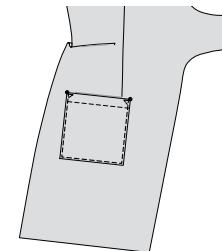
7. **TOPSTITCH** along basting.



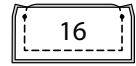
8. Pin upper pocket to **LEFT** bodice front, matching large dots. **EDGESTITCH** side and lower edges, reinforcing upper ends.



9. Pin lower pocket to lower **RIGHT** front matching large dots. **EDGESTITCH** side and lower edges, reinforcing upper ends.



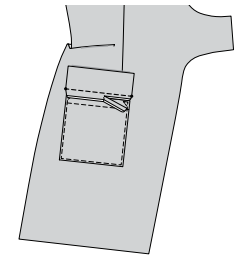
10. For flap, stitch **FLAP** (16) to flap facing section, leaving upper edge open. Trim.



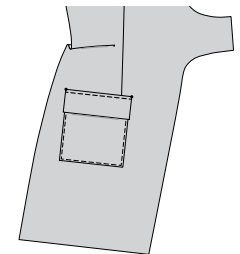
11. Turn right side out. Press. Baste raw edges together.



12. Pin flap to garment section, placing seamline along flap line. Baste. Stitch along seamline between small dots. Trim flap seam allowance to a scant 1/4" (6mm), being careful not to cut garment.



13. Turn flap down. Press. **TOPSTITCH** upper edge of flap, encasing trimmed edge.



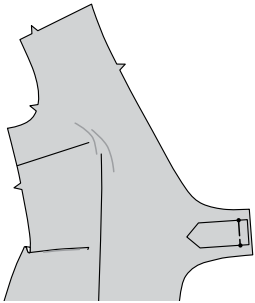
**ALL VIEWS**

14. With **RIGHT** sides together, pin uninterfaced **TAB** (8) to interfaced tab sections, having raw edges even. Stitch outer edge, leaving edge with small dots open. Trim seam and corners.

Turn tab **RIGHT** side out. Press. Baste raw edges together.



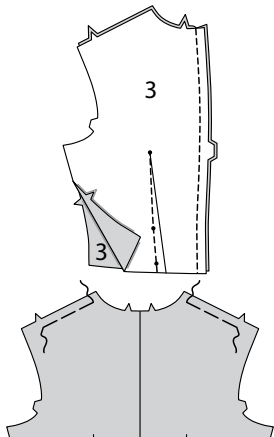
15. On OUTSIDE, pin tab to RIGHT front, matching small dots. Baste.



16. Stitch DARTS in BACK (3) sections. With RIGHT sides together, stitch center back seam of back sections, matching notches.

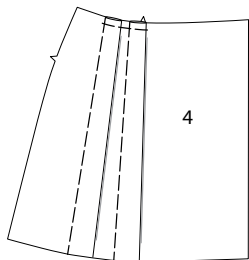
Press darts toward center.

EASESTITCH shoulders between notch and neck seamline.

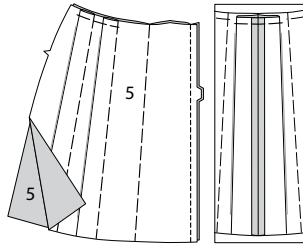


**SKIRT FRONT AND BACK**

17. **VIEW A, B-** To make pleats in SKIRT LEFT FRONT (4), bring solid and broken lines RIGHT sides together. Baste. Press pleats toward side. Baste across upper edge of pleats.

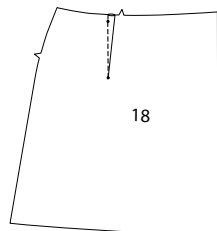


18. Stitch back edges of SKIRT BACK (5) sections. Make pleats in skirt back in same manner as for skirt left front. To make center pleat, bring together solid lines marked "center back"; baste. Bring back seam to basting, pressing center pleat flat, and remaining pleats toward side. Baste across upper edge of pleats.



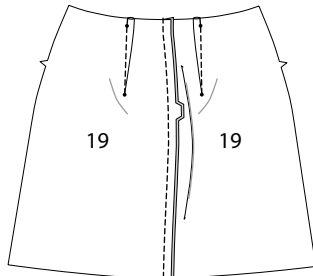
**VIEW C**

19. Stitch DARTS in SKIRT LEFT FRONT (18) sections.



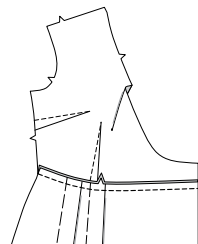
20. Make DARTS in SKIRT BACK (19) sections, in same manner as for skirt front.

With RIGHT sides together, stitch center back seam of skirt back sections, matching notches.

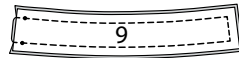


**ALL VIEWS**

21. With RIGHT sides together, pin skirt LEFT front, to lower edge of LEFT bodice front matching notches and small dots. Stitch. Press seam up.



22. With RIGHT sides together, pin uninterfaced BELT (9) to interfaced belt section, having raw edges even. Stitch outer edge, leaving edge with small dots open. Trim seam and corners.

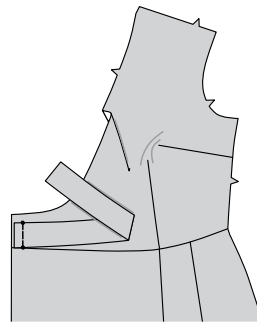


23. Turn belt RIGHT side out. Press. Baste raw edges together.

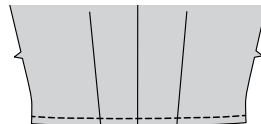
NOTE: The side with interfacing will be the INSIDE of the belt.



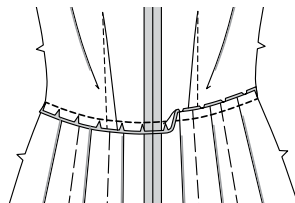
24. On OUTSIDE, with facing side up, pin belt to LEFT front, matching small dots. Baste.



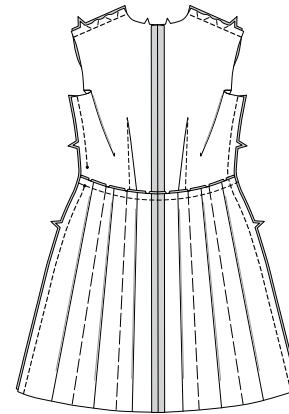
25. Machine-stitch 1/2" (1.3cm) from lower edge of bodice back.



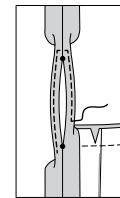
26. Pin skirt back, to lower edge of bodice back, matching notches and small dots. Baste. Stitch. Press seam up.



27. With RIGHT sides together, stitch front to back at shoulders, adjusting ease. Stitch sides, leaving an opening in RIGHT side seam between small dots. Back-stitch at small dots to reinforce seam.

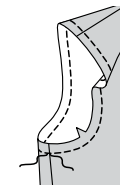


28. **OPTIONAL:** Make 5/8" (1.5cm) **NARROW HEM** between small dots, tapering to nothing above and below small dots. Pivot across seam allowance 1/4" (6mm) above and below small dots when stitching.



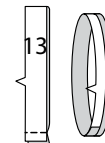
**ARMHOLE A**

29. Machine-stitch 1/2" (1.3cm) from armhole edges of garment.

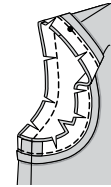


30. With RIGHT sides together, stitch ends of ARMHOLE FACING (13).

Press under 1/4" (6mm) on unmarked edge of facing.



31. With RIGHT sides together, pin facing to armhole edge, placing small dot at shoulder seam and matching underarm seams and front notch. Stitch. Trim seam; clip curves.



32. **UNDERSTITCH** armhole facing.

Turn facing to INSIDE; press. Baste close to inner edge of facing.

On OUTSIDE, **TOPSTITCH** as basted.



**SLEEVE B, C**

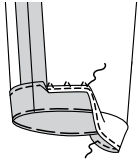
33. **EASE** upper edge of SLEEVE (17) between notches.



34. Stitch sleeve seam.



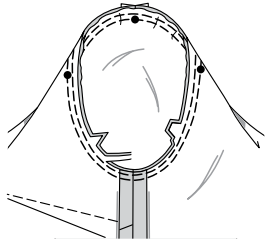
**35.** Turn up hem on lower edge of sleeve. Baste close to fold. **FINISH** raw edge. Sew hem in place, easing in fullness if necessary. Press.



**36.** Turn **SLEEVE** **RIGHT** side out.

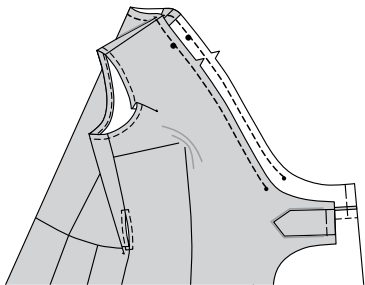
Hold garment **WRONG** side out with armhole toward you. With **RIGHT** sides together, pin sleeve to armhole edge with center small dot at shoulder seam, matching underarm seams, notches and remaining small dots. Pull up ease stitches to fit.

To distribute fullness evenly, slide fabric along bobbin threads until there are no puckers or tucks on the seam line. Baste. Stitch. Stitch again 1/8" (3mm) from first stitching. Trim seam below notches close to stitching. Press only the seam allowance, shrinking out fullness.



**COLLAR A, B**

**37. STAYSTITCH** neck edge of garment ending at small dots on front.



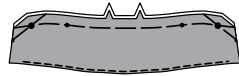
**VIEW A, B**

**38.** With **RIGHT** sides together, pin uninterfaced **COLLAR** (6) to interfaced collar section, having raw edges even. Stitch outer edge, leaving notched edge open. Trim seam and corners.

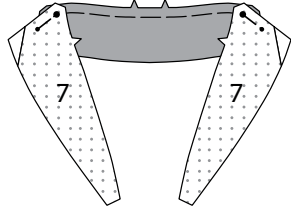


**39.** Turn collar **RIGHT** side out. Press. **UNDERSTITCH** collar, as far as possible.

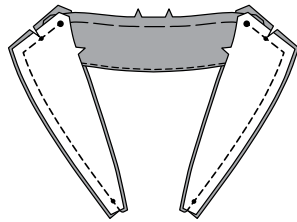
Baste raw edges together.



**40.** With under-stitching facing down, pin interfaced **LAPEL** (7) to each side of collar, having raw edges even, matching large and small dots. Baste.

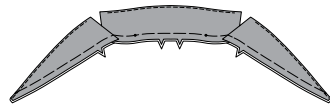


**41.** Pin remaining lapel facing sections to lapel (over collar), matching small and large dots, having raw edges even. Baste. Stitch upper and front edges of lapel. Trim seam. Clip collar seam allowance to small dot, as shown.

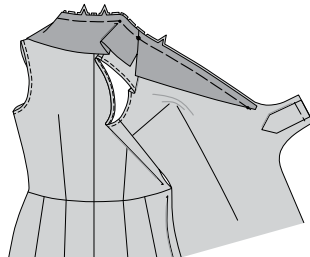


**42.** Turn lapel facing to **INSIDE**. Press. On same side as collar under-stitching, **UNDERSTITCH** lapel, as far as possible.

Baste raw edges together.



**43.** With under-stitching facing down, pin collar and lapel to **RIGHT** side of garment, matching notches, and small dots, placing inner small dot at shoulder seams. Clip to stay-stitching as necessary. Baste.



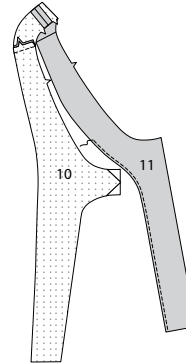
**FRONT AND BACK FACING**

**44.** With **RIGHT** sides together, stitch center back seam of **BACK FACING** (12) sections.

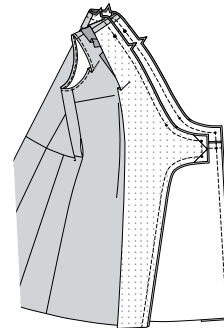


**45.** With **RIGHT** sides together, stitch **RIGHT FRONT FACING** (10) and **LEFT FRONT FACING** (11) to back facing at shoulders.

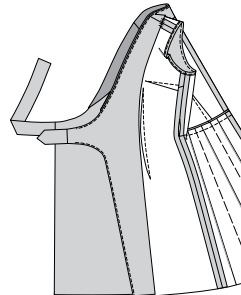
**FINISH** unmarked edge of facing.



**46.** On **OUTSIDE**, pin facing to front and back neck edge, (over collar and lapel for View A, B) matching small dots and notches. Baste. Stitch. Trim seam and corners. Clip curves.

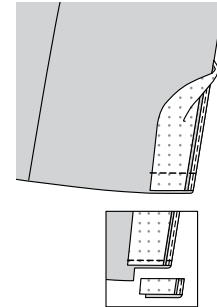


**47. UNDERSTITCH** facing as far as possible. Turn facing to **INSIDE**, press. Hand-tack facing at shoulder seams.



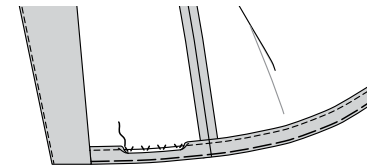
**FINISHING**

**48.** Turn lower edge of facing to outside along seam. Stitch across facing 1-1/4" (3.2cm) above raw edge. Trim, as shown.



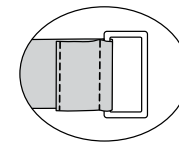
Release pleat basting for **Views A, B** before stitching hem.

**49.** Turn facing to inside, turning up hem. Baste close to fold. Trim hem to an even width. **FINISH** raw edge. Sew hem in place, easing in fullness if necessary. Press. Sew facings to hem.



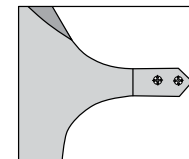
**50.** Feed end of belt through ring, folding belt along foldline, as shown.

**EDGESTITCH** end of belt in place.



**51.** On **OUTSIDE**, apply snap sections to tab, as shown.

On **INSIDE**, pull belt through opening in **RIGHT** side seam, bringing belt across the back. Pull end of tab through ring opening, and fasten snaps while wearing.





# Congrats!

You've completed your sewing adventure

---

**SHARE  
YOUR** LOOK



Post your pattern and tag us  
[@simplicity\\_creative\\_group](#) and [#simplicitypatterns](#)  
for a chance to be featured on our social media.

Look for more PDF patterns at [simplicity.com](https://www.simplicity.com)

Have a question or need help with your sewing project call us at  
1-800-782-0323

**McCall's**  
by **design**<sub>group</sub>

McCall's ©2024 a division of IG Design Group Americas Inc. • Atlanta, GA 30342 USA [www.thedesigngroup.com](http://www.thedesigngroup.com) • All Rights Reserved. [www.mccall.com](http://www.mccall.com) • Made in the U.S.A. Fabriqué aux États-Unis.  
To be used for individual private home use only and not for commercial or manufacturing purposes. • A usage privé seulement et non à des fins commerciales ou de production en série. • Para uso privado solamente, no se puede utilizar con propósitos de comercialización o de producción en serie.