

**McCall's**

M8527



Designed and printed in USA 

**MELISSA WATSON**  
FOR PALMER/PLETSCH

Average

**MISSES' PANTS**

**Suggested Fabrics:** Cotton Blends, Dupioni, Faille, Linen, Raw Silk, Taffeta. **Lining:** Lining Fabrics. **Interfacing:** Lightweight Fusible.

**Notions:** 2 yds. (1.9m) of ½" (1.3cm) elastic, one 7" (18cm) zipper (cut to fit), two hooks and bars.

Sizes	8	10	12	14	16	18	20	22	24	26
European	34	36	38	40	42	44	46	48	50	52

**BODY MEASUREMENTS: Select pattern size based on body measurements**

<b>Bust</b>	31½	32½	34	36	38	40	42	44	46	48	Ins.
<b>Waist</b>	24	25	26½	28	30	32	34	37	39	41	"
<b>Hip-9" below waist</b>	33½	34½	36	38	40	42	44	46	48	50	"
<b>Back-neck to waist</b>	15¾	16	16¼	16½	16¾	17	17¼	17½	17¾	18	"

**Pants**

45**	2¾	2¾	2¾	3	3¼	3¼	3¾	3¾	3¾	3¾	Yds.
60**	2	2	2	2½	2½	2½	2¾	2¾	2¾	2¾	"

**Lining**

45**	½	½	½	½	½	½	½	½	½	½	Yd.
------	---	---	---	---	---	---	---	---	---	---	-----

**Interfacing**

20"	½	½	½	½	½	½	½	½	¾	¾	Yd.
-----	---	---	---	---	---	---	---	---	---	---	-----

**FINISHED GARMENT MEASUREMENTS (Includes Design and Wearing Ease)**

<b>Hip</b>	37½	38½	40	42	44	46	48	50	52	54	Ins.
<b>Width, each leg</b>											
<b>Pants</b>	18½	19	19¾	20½	21¼	22	22¾	23½	24¼	25	Ins.
<b>Finished side length from waist</b>											
<b>Pants</b>	39¾	40	40¼	40¾	40¾	41	41¼	41½	41¾	42	Ins.

\*with nap \*\*without nap

Moins Facile

**PANTALON POUR JEUNES FEMMES**

**Tissu Conseillé:** Cotonnades, Dupioni, Faille, Toile de lin, Soie grège, Taffetas. **Doubleure:** Tissus à doubleure. **Entoilage:** Thermocollant léger.

**Mercerie:** 1.9m d'élastique de 1.3cm, 1 fermeture à glissière de 18cm (coupée pour ajuster), deux crochets pour pantalon.

Tailles	8	10	12	14	16	18	20	22	24	26
Françaises	36	38	40	42	44	46	48	50	52	54
Européen	34	36	38	40	42	44	46	48	50	52

**MESURES DU CORPS: Choisissez la taille du patron basée sur les mesures du corps**

<b>Poitrine</b>	80	83	87	92	97	102	107	112	117	122	cm
<b>Taille</b>	61	64	67	71	76	81	87	94	99	104	"
<b>Hanches (23cm au-dessous de la taille)</b>											
	85	88	92	97	102	107	112	117	122	127	cm

**Dos du cou à la taille**

	40	40.5	41.5	42	42.5	43	44	44.5	45	46	"
--	----	------	------	----	------	----	----	------	----	----	---

**Pantalon**

115cm*	2.5	2.5	2.6	2.7	3.0	3.0	3.0	3.1	3.1	3.1	m
150cm*	1.8	1.8	1.8	1.9	1.9	2.4	2.4	2.7	2.7	2.7	m

**Doubleure**

115cm**	0.5	0.5	0.5	0.5	0.5	0.5	0.5	0.5	0.5	0.5	m
---------	-----	-----	-----	-----	-----	-----	-----	-----	-----	-----	---

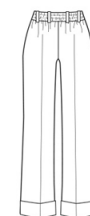
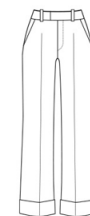
**Entoilage**

51cm	0.5	0.5	0.5	0.5	0.5	0.5	0.5	0.5	0.5	0.6	m
------	-----	-----	-----	-----	-----	-----	-----	-----	-----	-----	---

**MESURES DES VÊTEMENTS FINI (Motif et aisance de port compris)**

<b>Hanches</b>	95	98	102	107	112	117	122	127	132	137	cm
<b>Largeur, chaque jambe</b>											
<b>Pantalon</b>	47	48	50	52	54	56	58	60	62	64	cm
<b>Longueur finie – côté, taille à l'ourlet</b>											
<b>Pantalon</b>	101	102	102	103	104	104	105	105	106	107	cm

\*avec sens \*\*sans sens

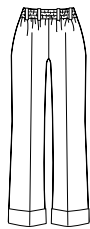


MELISSA WATSON  
FOR PALMER/PLETSCH

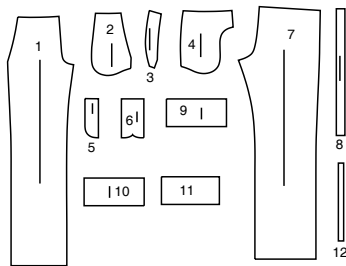
FRONT



BACK



12 PATTERN PIECES



- 1 Front
- 2 Pocket Lining
- 3 Pocket Facing
- 4 Side Front and Pocket
- 5 Left Fly Facing
- 6 Right Fly
- 7 Back
- 8 Carrier
- 9 Right Front Waistband
- 10 Left Front Waistband
- 11 Back Casing
- 12 Guide for Elastic

THE ELASTIC BACK PANT

Tissue Fitting Introduction And Style Tips

Because I want you to LOVE what you sew, I am including the Palmer/Pletsch tissue fitting method in all my designs. The method was developed by Pati Palmer and Marta Alto and you can find solutions to all your other fitting woes in the Fit For Real People books.



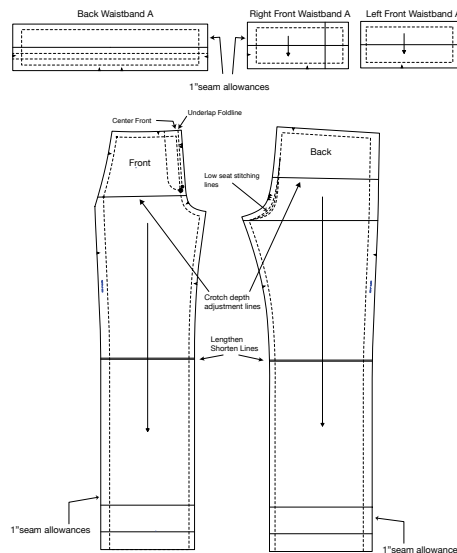
Follow these 4 easy steps:

- 1) Press tissue with a dry iron set at WOOL setting and trim and tape the pattern.
- 2) Try it on.
- 3) If it doesn't quite fit, make alterations using the handy alteration lines printed on the tissue.
- 4) After cutting, pin your fabric together and try on before you sew.

See more versions of this design and connect with me @melissawatsondesign on Instagram. The Palmer/Pletsch blog, blog.palmerpletsch.com, features extra sewing and styling tips for the Melissa Watson and Palmer/Pletsch patterns!

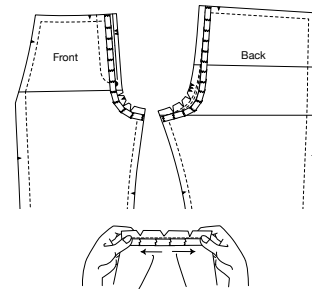
This pattern has adjustment instructions for

- 1) Waist and hip width
- 2) Crotch depth and length
- 3) Low seat stitching lines

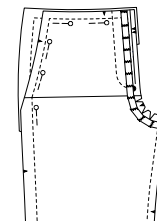


Prepare Your Tissue For Fitting And Try It On

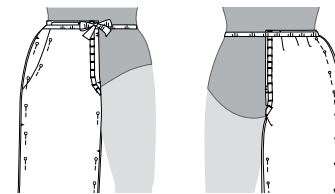
- A. Trim around the pant front, side front and pocket, and back.
- B. Press tissue with dry iron set at wool setting.
- C. Tape the FRONT and BACK crotch on the inside of the seam stitching line, as shown, to keep tissue from tearing. Make sure pattern is anchored to cutting board before taping. Use 1/2" (1.3cm) Scotch™ Magic™ Tape. Use short pieces around curve and lap tape ends. **(Tape the pant BACK next to LOWEST crotch stitching line.)**



- D. Clip curves to stitching line but NOT THROUGH the tape.
- E. Lap the side front and front, matching small dots, then pin together so you will have a complete front.



- F. Pin tissue pieces wrong sides together. Tie 1/2" (1.3cm) elastic around your waist and place the elastic approximately where you want THE BOTTOM of your waistband to sit; that will be the seam where the waistband meets the pant. Try on tissue, tuck the tissue under the elastic, lining up the seamline to the bottom of the elastic. Since there is extra fullness in the back for the elastic back casing, make sure to line up the side seams with your side.

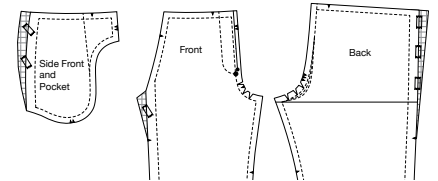


P.S. You may ask, where is my waist at? The top of the hip bone is normal, but some people want to wear pants higher or lower. YOU decide where YOU want to wear your pants.

Waist And Hip Width Adjustments

TOO TIGHT: If the pants center front won't meet yours, you may need more waist and/or hip width.

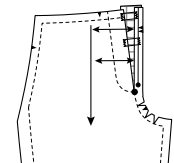
1. Un-pin the upper side seam. Tape tissue to sides. Cut tissue wide enough to allow for 1" (2.5cm) seam allowances. What you add to the front should be exactly the same as the back.



If you need width in the upper waist, only add in that area. If you need width from the waist down to the thigh area, add tissue from the waist down the hip/thigh. Be sure to make the same adjustment on pocket facing and pocket lining, if necessary.

2. Place side front on top of back to make sure you've added the same to both.
3. Pin front and back together evenly on an imaginary seamline, try them back on, and let the pins out until the center front and center back of the pants meet yours. This will take some trial and error.

**FIT BONUS:** Another way to get more waist room when you have a FULL TUMMY is to cut on center front line and straighten it to be parallel to grainline. Insert tissue.

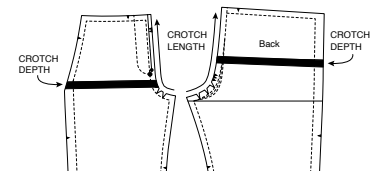


TOO LOOSE: You want the tissue to fit close to your body, because fabric will have more natural stretch than tissue.

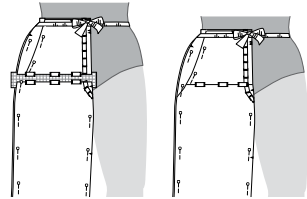
4. If you have a lot of extra room in the waist and the hip, pin side seams deeper until tissue skims your body.

Crotch Length And Depth Adjustments

TOO LONG OR SHORT IN CROTCH (DEPTH): The pattern crotch should be approximately 3/4" (2cm) from yours.

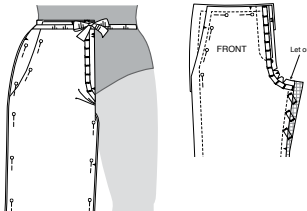


5. Cut and spread FRONT and BACK evenly to lengthen or tuck to shorten until crotch is comfortable.

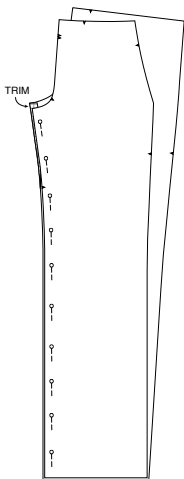


**SMILES IN CROTCH (TOO LITTLE LENGTH):** Once the crotch depth is good, meaning it is not too long or short, but you are seeing pulls from the inseam, called "Smiles"™, in the front or back, let out the inseam until they are gone. You will be adding to CROTCH LENGTH when you do so.

6. Un-pin the inseam and add tissue to the front or back crotch, wherever you need it, down into the thigh and try it back on. You will gradually let the pins out until the smiles are gone.

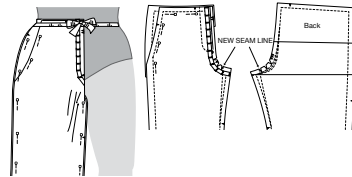


7. If you have added a lot to one inseam and not to the other, match legs at hemline and if uneven at top, trim the longer one to match the shorter.



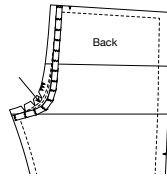
**FRONNS IN CROTCH (TOO MUCH LENGTH):**

8. If you have vertical drag lines/fullness in front and/or back, take in the inseam until the fullness is gone.



**Reshaping The Back Rise Curve-Low Seat Adjustment**

If you have a flatter seat but you are also long waisted, it may benefit you to use the medium or low back rise stitching line. This reshapes the curve to fit your curves better. You will have to check this once you have already done your other adjustments. You can clip to the lowest line and try it on. If it fits well, make that your stitching line. If not, you can tape it back up to the middle or the highest line.



**CONGRATS! YOU HAVE FITTED YOUR PANTS!**

Just a reminder, make sure you check that the length is right for you and that the leg width is to your preference. These are really style choices that you can make on your own!

Much love,  
Melissa

**FABRIC CUTTING LAYOUTS**

⊕ Indicates Bustline, Waistline, Hipline and/or Biceps. Measurements refer to circumference of Finished Garment (Body Measurement + Wearing Ease + Design Ease). Adjust Pattern if necessary.

Lines shown are CUTTING LINES, however, 5/8" (1.5cm) SEAM ALLOWANCES ARE INCLUDED, unless otherwise indicated. See SEWING INFORMATION for seam allowance.

Find layout(s) by Garment/View, Fabric Width and Size. Layouts show approximate position of pattern pieces; position may vary slightly according to your pattern size.

All layouts are for with or without nap unless specified. For fabrics with nap, pile, shading or one-way design, use WITH NAP layout.

RIGHT SIDE OF PATTERN	WRONG SIDE OF PATTERN	RIGHT SIDE OF FABRIC	WRONG SIDE OF FABRIC
-----------------------	-----------------------	----------------------	----------------------

S/T = SIZE(S)/TAILLE(S)  
 \* = WITH NAP/AVEC SENS  
 S/L = SELVAGE(S)/LISIÈRE(S)  
 AS/TT = ALL SIZE(S)/TOUTES TAILLE(S)  
 \*\* = WITHOUT NAP/SANS SENS  
 F/P = FOLD/PLIURE  
 CF/PT = CROSSWISE FOLD/PLIURE TRAME

Position fabric as indicated on layout. If layout shows...

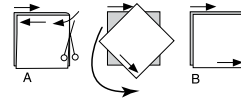
**GRAINLINE**—Place on straight grain of fabric, keeping line parallel to selvage or fold. ON "with nap" layout arrows should point in the same directions. (On Fur Pile fabrics, arrows point in direction of pile.)

**SINGLE THICKNESS**—Place fabric right side up. (For Fur Pile fabrics, place pile side down.)

**DOUBLE THICKNESS**

WITH FOLD—Fold fabric right sides together.

\* WITHOUT FOLD—With right sides together, fold fabric CROSSWISE. Cut fold from selvage to selvage (A). Keeping right sides together, turn upper layer completely around so nap runs in the same direction as lower layer.



**FOLD**—Place edge indicated exactly along fold of fabric. NEVER cut on this line.

When pattern piece is shown like this...

\* Cut other pieces first, allowing enough fabric to cut this piece (A). Fold fabric and cut piece on fold, as shown (B).

★ Cut piece only once. Cut other pieces first, allowing enough fabric to cut this piece. Open fabric; cut piece on single layer.

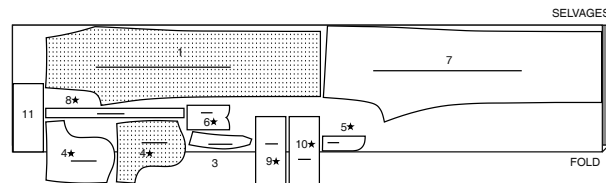
Cut out all pieces along cutting line indicated for desired size using long, even scissor strokes, cutting notches outward. Transfer all markings and lines of construction before removing pattern tissue. (Fur Pile fabrics, transfer markings to wrong side.)

**NOTE:** Broken-line boxes (a | b | c |) in layouts represent pieces cut by measurements provided.

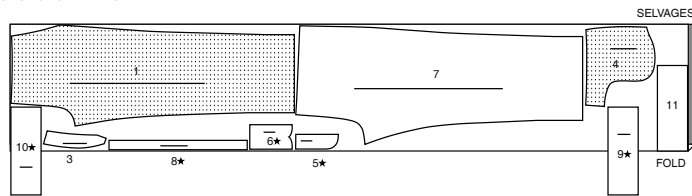
**PANTS**

use pieces: 1 3 4 5 6 7 8 9 10 11

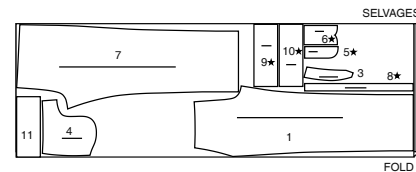
45" (115 cm)  
with nap  
sizes 8 10 12 14



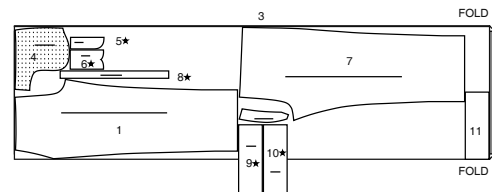
45" (115 cm)  
with nap  
sizes 16 18 20 22 24 26



60" (150 cm)  
with nap  
sizes 8 10 12 14 16 18 20



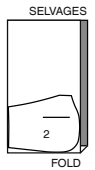
60" (150 cm)  
with nap  
sizes 22 24 26



**LINING**

use piece: 2

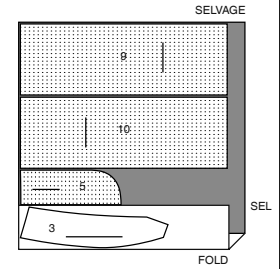
45" (115 cm)  
without nap  
all sizes



**INTERFACING**

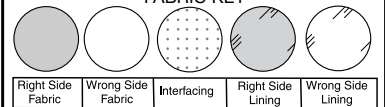
use pieces: 3 5 9 10

20" (51 cm)  
all sizes



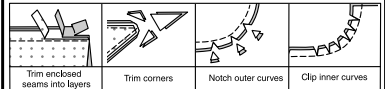
**SEWING INFORMATION**

**FABRIC KEY**



**SEAM ALLOWANCES**

Use 5/8" (1.5cm) seam allowances unless otherwise indicated.



**PIN AND FIT**

Pin or baste seams, RIGHT SIDE TOGETHER, matching notches. Fit garment before stitching major seams.

**PRESS**

Press seam allowances flat; then open unless otherwise stated. Clip where necessary so they lie flat.

**GLOSSARY**

Sewing terms appearing in **BOLD TYPE** in Sewing Instructions are explained below.

**EDGE STITCH** - Stitch close to finished edge or seam.

**FINISH** - Stitch 1/4" (6mm) from raw edge and finish with one of the following: (1) Pink OR (2) Overcast OR (3) Turn in along stitching and stitch close to fold OR (4) Overlock.

**OPTIONAL FOR HEMS:** Apply Seam Binding.

**UNDERSTITCH** - Open out facing or underside of garment; stitch to seam allowance close to seam.

**PATTERN PIECES WILL BE IDENTIFIED BY NUMBERS THE FIRST TIME THEY ARE USED.**

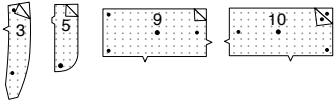
**STITCH SEAMS WITH RIGHT SIDES TOGETHER UNLESS OTHERWISE STATED.**

# SEWING DIRECTIONS

## PANTS

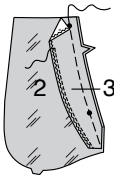
### Interfacing

1. Fuse INTERFACING to WRONG side of each matching FABRIC section following manufacturer's instructions.

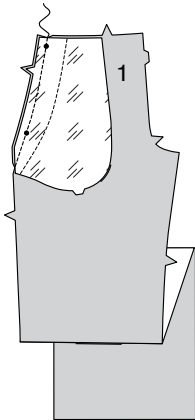


### Front And Back

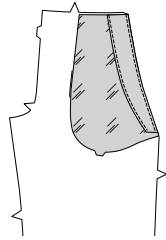
2. **FINISH** long unnotched edge of POCKET FACING (3). With RIGHT sides up, pin pocket facing to POCKET LINING (2), matching notches and small dots. Baste. Stitch close to finished edge of pocket facing.



3. Stitch pocket lining to upper side edge of FRONT (1), matching notches and small dots. Trim.



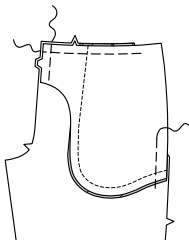
4. **UNDERSTITCH** pocket facing/lining. Turn pocket to inside. Press.



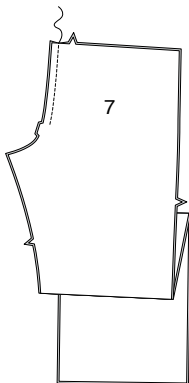
5. With RIGHT sides up, pin front to SIDE FRONT AND POCKET (4), matching notches, small dots. Lift up front and pin edges of pocket bag together, having seam line of pocket lining along stitching line on side front and pocket. Keeping the front free, stitch outer edges together, continuing stitching along stitching line.



6. Pin front edges of front and side front and pocket together. Baste along center front. Baste upper and side edges together.



7. Stitch center back seam in BACK (7) above triple notch.



### Fly Front Zipper

8. Construct fly front as follows:

A-Stitch front sections together at center front between large dot and notch.

B-Turn in right front opening edge along foldline; press.

C-Place closed zipper (face up) under right front opening edge, having pressed edge close to zipper teeth and top zipper stop 1/8"(3mm) below waist seamline. Using a zipper foot, baste close to pressed edge.

D-With WRONG sides together, fold RIGHT FLY (6) in half lengthwise, having raw edges even. Baste raw edges.

E-On INSIDE, pin right fly to right front opening edge (over zipper), matching notches and small dots, having raw edges even. Baste along previous basting for zipper.

F-On OUTSIDE, using a zipper foot, stitch close to pressed edge of front through all layers.

G- **FINISH** outer edge of LEFT FLY FACING (5). Pin fly facing to left front opening edge, matching notches, and large dots. Stitch, ending at large dot. Trim. **UNDERSTITCH** fly facing. Turn facing to inside. Press.

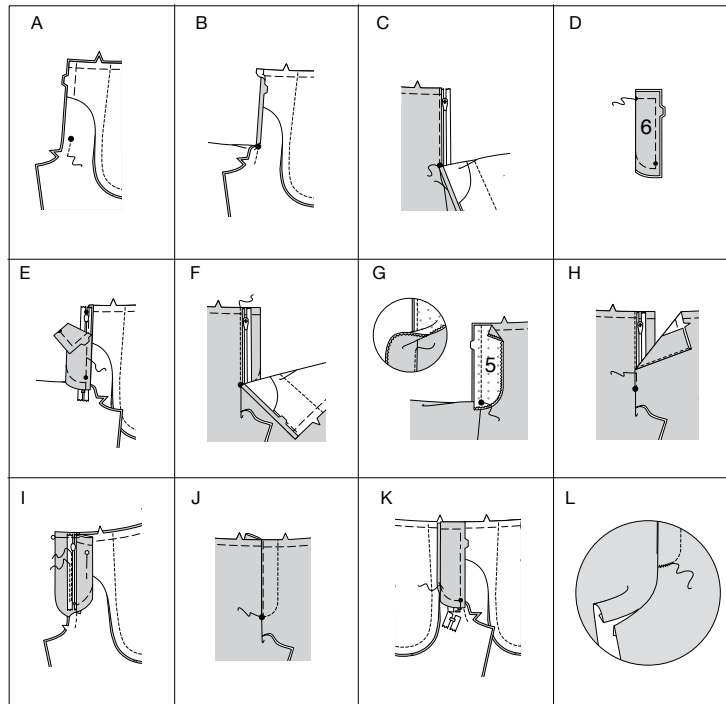
H-Lap left front over right, matching centers. Baste close to edge through all thicknesses.

I-Pin right fly out of the way. Open out fly facing. Pin remaining zipper tape to fly facing, keeping fronts free. Using a zipper foot, stitch in place close to zipper teeth and along center of zipper tape.

J-Turn facing down. On outside, stitch left front along stitching line, keeping right fly free.

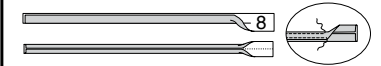
K-Turn right fly back in place. On inside, hand tack fly and facing together at lower edge, as shown. Trim away excess zipper tape even with lower edge of fly, if needed.

L-If desired, on outside, machine-stitch a bar tack across lower end of fly through all thicknesses.

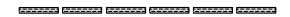


9. Fold CARRIER (8) in half, lengthwise with WRONG sides together. Press.

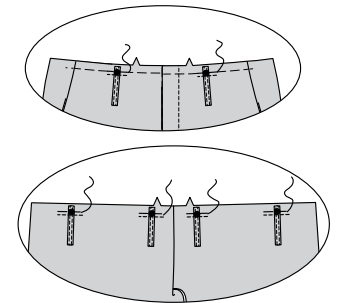
Open out long edges of carrier and turn them to WRONG side so that they meet at the crease. Press. Fold carrier in half lengthwise, bringing pressed edges together. Stitch close to both long edges.



10. Cut six carriers, each 4"(10cm) long.

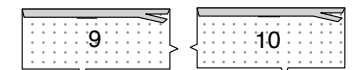


11. Pin one end of carrier to front and back, centering over large dots, having raw edges even. Baste. Stitch carriers to front and back 1/4"(6mm) below seamline.

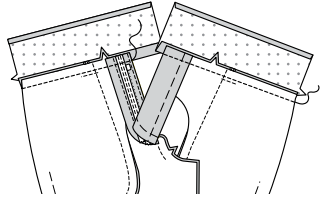


### Front Waistband And Back Casing

12. Turn under 5/8"(1.5cm) seam allowances on long unnotched edge of RIGHT FRONT WAISTBAND (9) and LEFT FRONT WAISTBAND (10). Press. Trim pressed edge to 3/8"(1cm).



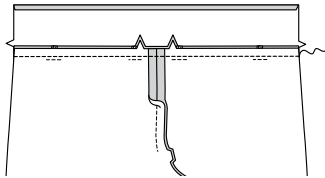
13. Pin right front waistband to right front and left front waistband to left front, RIGHT sides together, matching notches and center fronts. Stitch. Press seam toward waistband.



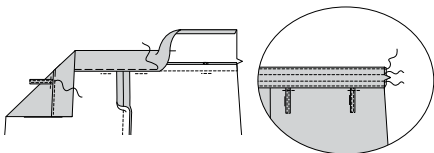
14. Turn under 5/8"(1.5cm) seam allowance on long unnotched edge of BACK CASING (11). Press. Trim pressed edge to 3/8"(1cm).



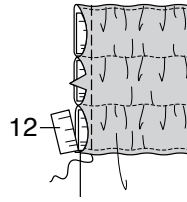
15. Pin casing to back, RIGHT sides together, matching notches and center backs. Stitch. Press seam toward casing.



16. Fold back casing along foldline, WRONG sides together, pinning pressed edge over seam. Baste close to pressed edge. On OUTSIDE, stitch along basting. EDGESTITCH upper edge of casing. To form channels for elastic, stitch casing along stitching lines.



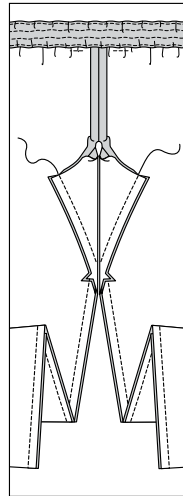
17. Cut three pieces of elastic using GUIDE FOR ELASTIC (12). Insert elastic into casing have ends even with side edges. Baste across ends. To reduce bulk, pull out ends of elastic and trim away excess.



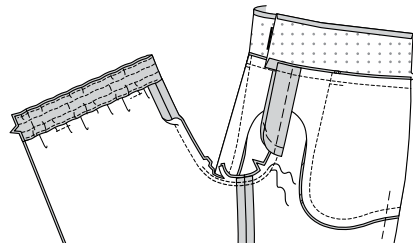
12

Remaining Seams

18. Pin back to front at inner leg seams matching notches. Stitch.

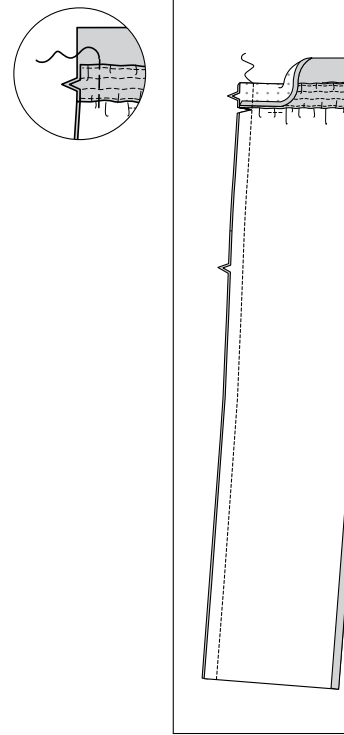


19. With RIGHT sides together, pin remaining crotch seam, matching notches and inner leg seams. Stitch between notches. Stitch again 1/4"(6mm) away in seam allowances. Trim close to second stitching.

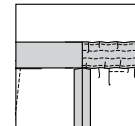


**FIT TIP:** Pin front and back at sides, WRONG sides together. Side seams have 1"(2.5cm) seam allowances to make adjustments. Try on pants to make sure waist is comfortable. Adjust elastic if necessary.

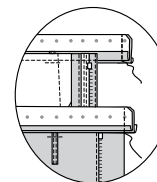
20. Pin back to front at sides, RIGHT sides together, having upper edge of back casing at foldline on front waistbands. Baste. Fold front waistbands along foldline, RIGHT sides together, over back casing. Stitch entire side seam. Clip seam allowances below casing. Trim seam allowances to 5/8"(1.5cm), if needed.



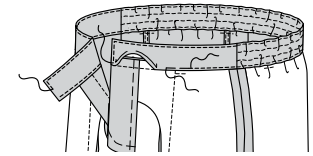
21. Turn waistbands to INSIDE, turning seam above clip toward front. Press seams open below clip.



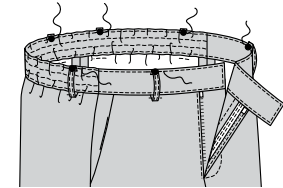
22. Fold front ends of waistband along foldline, RIGHT sides together, pin. Stitch ends. Trim corners.



23. Turn front waistband RIGHT side out. Press. Pin pressed edges of front waistbands over seam. Baste. EDGESTITCH upper, front, and lower edges of front waistbands, keeping carriers free.

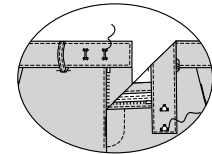


24. Turn under 1/4"(6mm) on remaining ends of carriers. Press. Pin ends to upper edge of front waistbands and back casing, centering over large dots. Stitch close to edge of carriers.

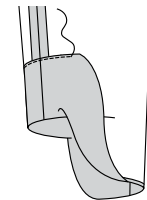


Finishing

25. Sew hook and bar closures to waistband, as shown.



26. Turn in 1/4"(6mm) on lower edge of pants. Press. Turn lower edge of pants to INSIDE along upper foldline for cuff. Press. Stitch hem in place close to inner pressed edge of hem.



27. To form cuff, turn lower edge of pants along lower foldline for hem to OUTSIDE. Press. To hold cuff in place, on OUTSIDE, spread leg seams with fingers until previous stitching is visible. Stitch on top of previous stitching 5/8"(1.5cm) down from top of cuff.





# Congrats!

You've completed your sewing adventure

---

**SHARE  
YOUR** LOOK



Post your pattern and tag us  
[@simplicity\\_creative\\_group](#) and [#simplicitypatterns](#)  
for a chance to be featured on our social media.

Look for more PDF patterns at [simplicity.com](https://www.simplicity.com)

Have a question or need help with your sewing project call us at  
1-800-782-0323

**McCall's**  
by **design**<sub>group</sub>

McCall's ©2024 a division of IG Design Group Americas Inc. • Atlanta, GA 30342 USA [www.thedesigngroup.com](http://www.thedesigngroup.com) • All Rights Reserved. [www.mccall.com](http://www.mccall.com) • Made in the U.S.A. Fabriqué aux États-Unis.  
To be used for individual private home use only and not for commercial or manufacturing purposes. • A usage privé seulement et non à des fins commerciales ou de production en série. • Para uso privado solamente, no se puede utilizar con propósitos de comercialización o de producción en serie.