

McCall's

M8524



LAURA ASHLEY
SINCE 1953



Scan QR code to download instructions for belt, bags and shoes.
Scannez le code QR pour télécharger les instructions pour la ceinture, le sac et les chaussures.

Designed and
printed in USA

Shop all the pattern brands you love @

Simplicity.com



18" (46CM) DOLL CLOTHES

Suggested Fabrics: Designed for light to medium weight woven and medium weight stretch fabrics. **Leggings A, C, Bolero B:** Jersey. **Dress A, Top B, C, Skirt C, Headband A, Lining (Jacket, Hats):** Cotton, Cotton Blends. **Pants B, Jacket C, Hat A, C:** Twill, Denim, Wool, Wool Blends. **Interfacing B, C:** Lightweight Fusible.

Notions: A: ¼ yd. (0.3m) of ½" (1.3cm) single fold bias tape, 1 yd. of ¼" (6mm) elastic, ¼ yd. of ¾" (1.5cm) hook and loop fastener tape. B: ¼ yd. (0.3m) of ½" (1.3cm) single fold bias tape, ¾ yd. (0.6m) of ¼" (6mm) elastic, ¼ yd. (0.3m) of ¾" (1.5cm) hook and loop fastener tape. C: One snap, ¼ yd. (0.3m) of ½" (1.3cm) single fold bias tape, ¾ yd. (0.7m) of ¼" (6mm) elastic, ¼ yd. (0.3m) of ¾" (1.5cm) hook and loop fastener tape.

Dress A (Yoke and Sleeves) - 21" x 7½" remnant

Contrast 1A (Dress, Headband) - 21" x 10" fabric remnant

Contrast 2A (Dress Upper Ruffle, Flower) - 45, 60*** - ¾ yd.

Contrast 3A (Dress Lower Ruffle) - 45, 60*** - ¾ yd.

Leggings A - 18" x 11" knit remnant

Bolero B - 45*** - ½ yd.

Top Yoke, Sleeves B - 20" x 8" fabric remnant

Contrast B (Top, Ruffle) - 45, 60*** - ¼ yd.

Pants B - 45, 60*** - ¾ yd.

Hat B - 45, 60*** - ¾ yd.

Interfacing B, C - 20" - ¾ yd.

Jacket C - 45, 60*** - ¾ yd.

Jacket Lining C - 19" x 9½" fabric remnant

Hat C - 45, 60*** - ¾ yd.

Top C - 20" x 14" fabric remnant

Skirt C - 22" x 18" fabric remnant

Leggings C - 18" x 9" knit remnant

Contrast Leggings Band C - 12" x 4" knit remnant

VÊTEMENTS POUR POUPEE DE 46CM

Tissus Conseillés: Créé pour des tissus tissés de poids léger à moyen et des tissus extensibles de poids moyen.

Collant A, C, Boléro B: Jersey. **Robe A, Haut B, C, Jupe C, Bandeau de tête A, Doublure (Veste, Chapeaux):** Cotton, Cottonnades. **Pantalón B, Veste C, Chapeau A, C:** Twill, Denim, Laine, Lainages. **Entoilage B, C:** Thermooliant léger.

Mercerie: A: 0.3m de ruban de biais simple de 1.3cm, 0.9m d'élastique de 6mm, 0.3m de ruban autoagrippant de 1.5cm. B: 0.3m de ruban de biais simple de 1.3cm, 0.6m d'élastique de 6mm, 0.3m de ruban autoagrippant de 1.5cm. C: 1 pression, 0.3m de ruban de biais simple de 1.3cm, 0.7m d'élastique de 6mm, 0.3m de ruban autoagrippant de 1.5cm.

Robe A (Empiècement et Manches) - Morceau de tissu de 53cm x 19.3cm

Contraste 1A (Robe, Bandeau de tête) - Morceau de tissu de 53cm x 25cm

Contraste 2A (Volant supérieur de la robe, Fleur) - 115, 150cm*** - 0.4m

Contraste 3A (Volant inférieur) - 115, 150cm*** - 0.3m

Collant A - Morceau de tricot de 46cm x 28cm

Boléro B - 115cm*** - 0.5m

Empiècement du Haut, Manches B - Morceau de tissu de 51cm x 20.5cm

Contraste B (Haut, Volant) - 115, 150cm*** - 0.3m

Pantalón B - 115, 150cm*** - 0.4m

Chapeau B - 115, 150cm*** - 0.4m.

Entoilage C - 51cm - 0.4m.

Veste C - 115, 150cm*** - 0.4m

Chapeau C - 115, 150cm*** - 0.3m

Haut C - Morceau de tissu de 51cm x 35cm

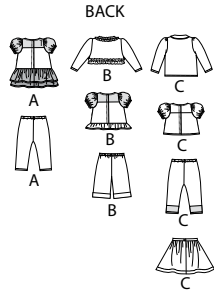
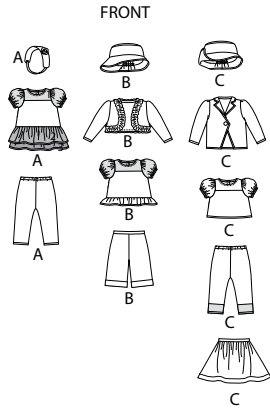
Jupe C - Morceau de tissu de 56cm x 46cm

Collant C - Morceau de tricot de 46cm x 23cm

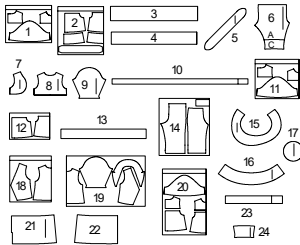
Bande de collant contrastée C - Morceau de tricot de 30cm x 10cm

*with nap **without nap ***with or without nap

*avec sens **sans sens ***avec ou sans sens

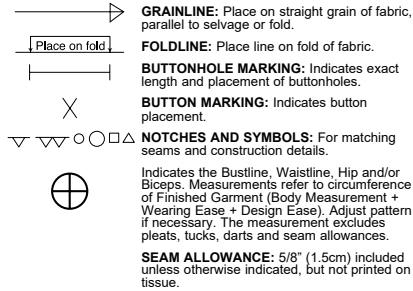


24 PATTERN PIECES

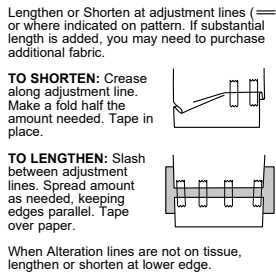


- 1 DRESS A
- 2 DRESS A
- 3 RUFFLE A
- 4 LOWER RUFFLE A
- 5 FLOWER A
- 6 FRONT AND BACK A C
- 7 FRONT B
- 8 BACK B
- 9 SLEEVE B
- 10 RUFFLE B
- 11 TOP B
- 12 TOP B
- 13 RUFFLE B
- 14 PANTS
- 15 BRIM B C
- 16 CROWN B C
- 17 TOP B C
- 18 JACKET C
- 19 JACKET C
- 20 TOP C
- 21 SKIRT BACK C
- 22 SKIRT FRONT C
- 23 WAISTBAND C
- 24 BAND C

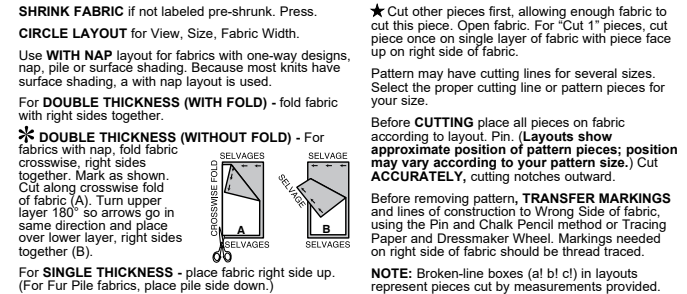
PATTERN MARKINGS



ADJUST IF NECESSARY



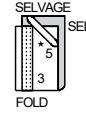
CUTTING AND MARKING



CUTTING LAYOUTS

CONTRAST 2 A
(Dress Upper Ruffle & Flower)

45", 60" (115, 150 cm)
without nap



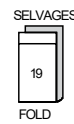
PANTS B

use piece: 14
45", 60" (115, 150 cm)
without nap



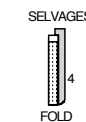
JACKET C

use piece: 19
45", 60" (115, 150 cm)
with or without nap



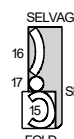
CONTRAST 3 A
(Dress Lower Ruffle)

45", 60" (115, 150 cm)
without nap



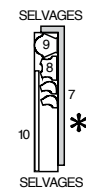
HAT B,C

use pieces: 15 16 17
45", 60" (115, 150 cm)
with or without nap



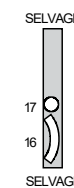
BOLERO B

45" (115 cm)
with or without nap



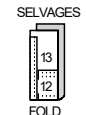
HAT LINING B,C

45" (115 cm)



CONTRAST B (Top & Ruffle)

45", 60" (115, 150 cm)
without nap

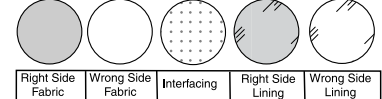


FUSIBLE INTERFACING B,C

18", 20" (46, 51cm)

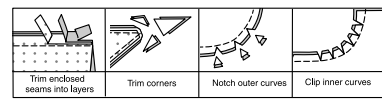


SEWING INFORMATION
FABRIC KEY



SEAM ALLOWANCES

Use 5/8" (1.5cm) seam allowances unless otherwise indicated.



PIN AND FIT

Pin or baste seams, RIGHT SIDE TOGETHER, matching notches. Fit garment before stitching major seams.

PRESS

Press seam allowances flat; then open unless otherwise stated. Clip where necessary so they lie flat.

GLOSSARY

Sewing methods in **BOLD TYPE** have Sewing Tutorial Video available. Scan QR CODE to watch videos:

- EDGESTITCH**--Stitch close to finished edge or seam.
- FINISH**--Stitch 1/4"(6mm) from raw edge.
- GATHER**--Working on the right side of the fabric, using long machine stitches. Stitch along seamline and again 1/8"(3mm) in seam allowance. Pull threads to adjust gathers.
- NARROW HEM**--Turn in seam allowance, turning under raw edge; press. Stitch close to pressed edge.
- SLIPSTITCH**--Slide needle through a folded edge, then pick up a thread of underneath fabric.
- STAYSTITCH**--Stitch along seamline, using small machine stitches.
- TOPSTITCH**--On outside, stitch 1/4"(6mm) from edge, seam or previous stitching.

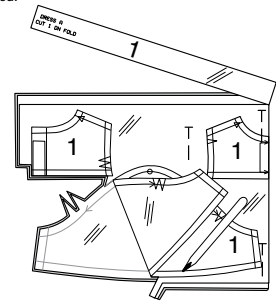
SCAN QR CODE FOR FREE ACCESSORIES INSTRUCTIONS



GENERAL INSTRUCTIONS

Pattern Tissue Preparation

Pin pattern tissues to corresponding fabric remnant.
Cut out sections from remnants. Transfer markings.
NOTE: For future use of boxed pattern tissues, transfer piece numbers and cutting information to individual pattern pieces, if desired.

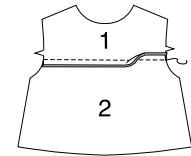


OUTFIT A

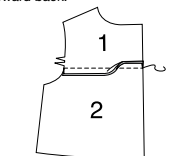
Dress and Headband

Prepare DRESS 1 and DRESS 2 following Pattern Tissue Preparation Instructions.

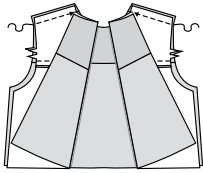
1. Stitch Yoke Front 1 to upper edge of Front 2. Press seam toward front.



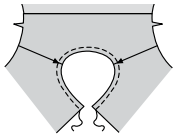
2. Stitch Yoke Back 1 to upper edge of each Back 2 section. Press seam toward back.



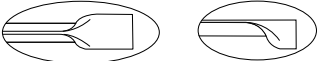
3. FINISH opening edge on each back section. Stitch front and back sections together at shoulders.



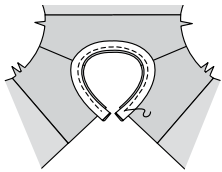
4. To prevent neck edge from stretching, stitch 1/4"(6mm) from raw edge.



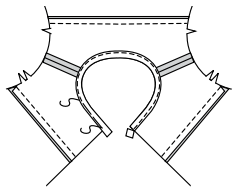
5. Cut one section from bias tape, 9"(23cm) long. Open out folded edges of bias tape; press. Fold bias tape in half lengthwise, having raw edges even; press.



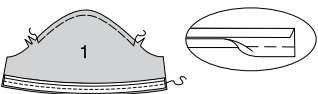
6. Pin bias tape to neck edge, having raw edges even; baste. Stitch. Trim.



7. Turn bias tape to inside along seam; press. Stitch close to inner edge. Trim ends even with back opening edges.



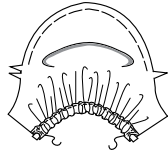
8. GATHER upper edge of each Sleeve 1 between notches, as shown. Open out one folded edge on remainder of bias tape; press. Pin bias tape to lower edge of sleeves, having raw edges even. Stitch.



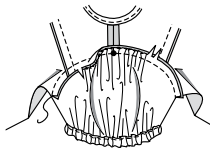
9. To form casing, turn bias tape to inside; press. Stitch close to inner edge.



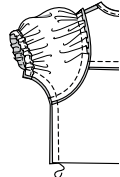
10. Cut two sections from elastic, each 5"(13cm) long. Insert elastic into each casing, having ends even with sides. Baste ends.



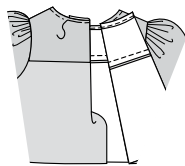
11. Pin sleeve to armhole edge, placing large dot at shoulder seam. Adjust gathers; baste. Stitch. Press seam toward front and back.



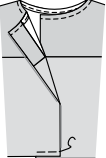
12. Pin front and back sections together at sides; pin sleeve edges together. Stitch in one continuous seam.



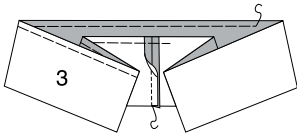
13. Turn left back opening edge to inside along center back; press. Baste in place.



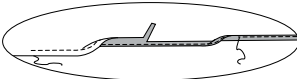
14. Lap left back over right back, matching center back. Baste lower edges together.



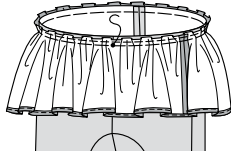
15. Stitch center back seam in RUFFLE 3. GATHER upper edge of ruffle, as shown.



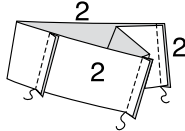
16. To make a very narrow hem on lower edge of ruffle, stitch 3/8"(1cm) from raw edge. Turn in and press edge alongside stitching, as shown. Trim very close to stitching. Turn in again along trimmed edge. Stitch in place.



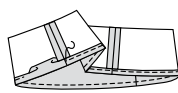
17. Pin ruffle to lower edge of dress, having right sides together, matching centers and small dots to side seams. Adjust gathers; baste.



18. Stitch Back Band 2 sections together at center back. Stitch Front Band 2 and back band together at sides.

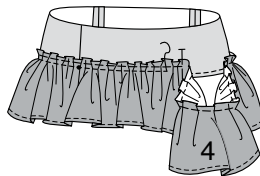


19. Make 1/2"(1.3cm) **NARROW HEM** on lower edge of band.

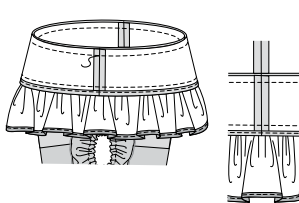


Prepare RUFFLE 4 in same manner as ruffle 3.

20. Pin wrong side of ruffle 4 to right side of band, having gathers 1/4"(6mm) above lower edge, matching centers and small dots to side seams. Adjust gathers; baste. Stitch along seamline.

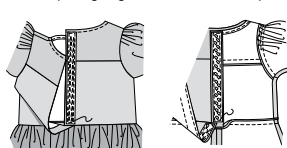


21. Pin band to lower edge of dress over ruffle 3, matching centers and side seams. Stitch. Press toward dress.

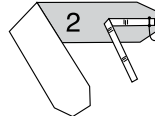


22. Cut one section from hook and loop tape, 5 1/2"(14cm) long. Trim width to 1/2"(1.3cm). On outside, pin soft section of hook and loop tape to right back opening edge, as shown. Stitch in place.

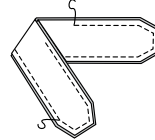
On inside, pin stiff section of hook and loop tape to left back opening edge, as shown. Stitch in place.



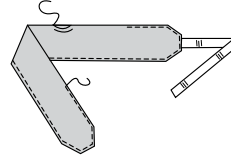
23. Cut one section from elastic, 4"(10cm) long. Pin elastic to one Headband 2 section, centering one end between small dots, as shown. Baste.



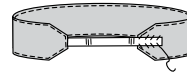
24. Stitch headband sections together, leaving an opening.



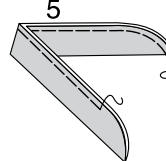
25. Turn right side out; press. Sew opening. **EDGE-STITCH** headband.



26. On inside, lap remaining end of elastic 1/2"(1.3cm) over opposite end of headband. Sew in place.



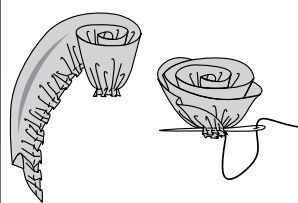
27. With wrong sides together, fold FLOWER 5 along foldline; press lightly. Baste raw edges together.



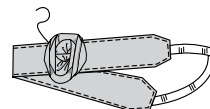
28. Hand gather 1/4"(6mm) from raw edge. Adjust gathers tightly; secure thread ends.



29. Starting at one end, roll flower toward you; sewing layers together as you roll.



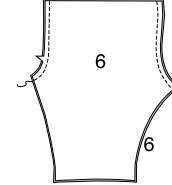
30. Arrange flower over headband, as desired. Tack in place.



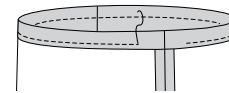
Leggings

Prepare **FRONT AND BACK 6** following Pattern Tissue Instructions.

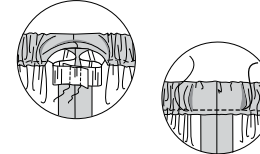
31. Stitch Front And Back 6 sections together at center front and center back.



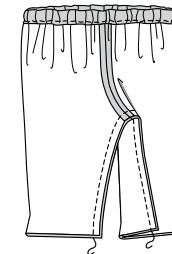
32. To form casing, turn upper edge to inside along foldline; press. Stitch 1/4"(6mm) from raw edge, leaving an opening.



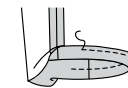
33. Cut one section from elastic, 11"(28cm) long. Insert elastic through opening in casing. Lap ends; stitch. Stitch opening, stretching elastic while stitching.



34. Stitch inner leg seam.



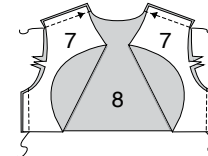
35. Turn up hem; press. Stitch 1/4"(1.3cm) from raw edge. Turn; press.



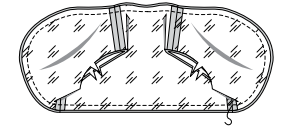
OUTFIT B

Bolero

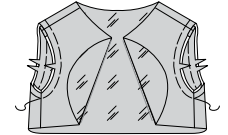
1. Stitch two **FRONT 7** sections to one **BACK 8** at shoulders and sides. For lining, stitch remaining back and front sections together in same manner.



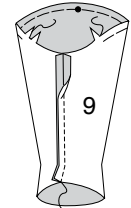
2. Pin lining to back and front sections, having right sides together. Stitch along neck, front opening and lower edge.



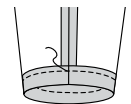
3. Turn right side out through one armhole; press. Baste raw edges together.



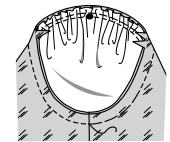
4. GATHER upper edge of each **SLEEVE 9** between notches, as shown. Stitch sleeve seam.



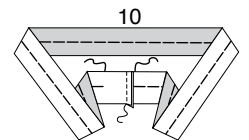
5. Turn up sleeve hem; press. Stitch close to inner edge.



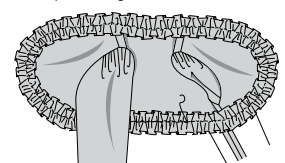
6. Pin sleeve into armhole, placing large dot at shoulder seam. Adjust gathers; baste. Stitch. Press seam toward sleeve.



7. Stitch center back seam in RUFFLE 10. To gather ruffle, stitch along gather line using long machine stitches.



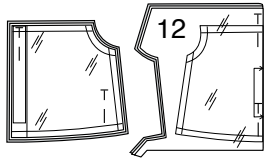
8. Pin ruffle to bolero, centering over stitching line, matching center back, as shown. Adjust gathers evenly; secure thread ends. Stitch ruffle in place along center.



Top

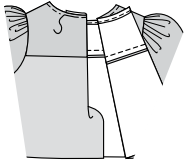
Prepare TOP 11 following Pattern Tissue Preparation Instructions.

9. Cut out sections from TOP 12.

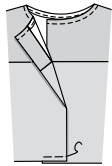


Prepare Top in same manner as Dress A, omitting ruffles, band and hook and loop tape.

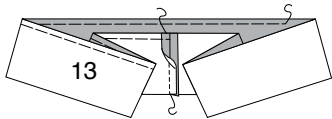
10. Turn left back opening edge on top to inside along center back; press. Baste in place.



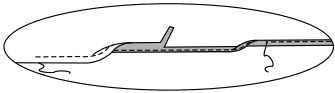
11. Lap left back over right back, matching center back. Baste lower edges together.



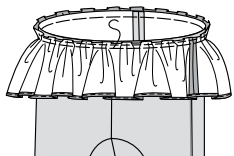
12. Stitch center back seam in RUFFLE 13. GATHER upper edge of ruffle, as shown.



13. To make a very narrow hem on lower edge of ruffle, stitch 3/8"(1cm) from raw edge. Turn in and press edge alongside stitching, as shown. Trim very close to stitching. Turn in again along trimmed edge. Stitch in place.



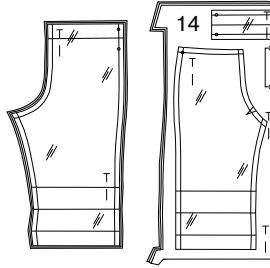
14. Pin ruffle to lower edge of top, having right sides together, matching centers and small dots to side seams. Adjust gathers; baste. Stitch. Press seam toward top.



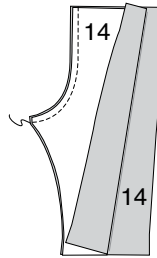
Apply hook and loop tape to back opening edges in same manner as Dress A.

Pants

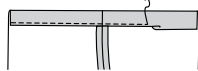
15. Cut out sections from PANTS 14.



16. Stitch Back 14 sections together at center back.



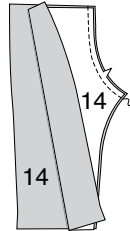
17. To form casing, turn upper edge of back to inside along foldline, turning in 1/4"(6mm) on raw edge; press. Stitch close to inner pressed edge.



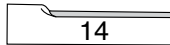
18. Cut one section from elastic, 5"(13cm) long. Insert elastic into casing, having ends even at sides; baste.



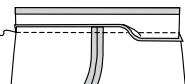
19. Stitch Front 14 sections together at center front.



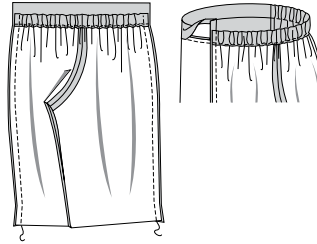
20. Turn in seam allowance on upper edge of Front Waistband 14; press.



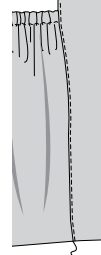
21. With right sides together, pin front waistband to front, having edges even. Stitch. Press seam toward waistband.



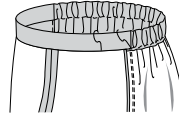
22. Pin front and back together at sides, having upper edge of back even with foldline on waistband. Stitch. Press seam toward front, turning in remaining seam allowance on sides of waistband.



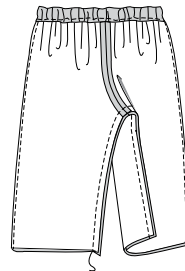
23. EDGESTITCH along side front seam.



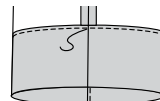
24. Turn waistband to inside along foldline; press. SLIPSTITCH pressed edge over seams. SLIPSTITCH waistband to side seam.



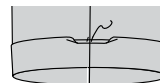
25. Stitch inner leg seam.



26. Turn lower edges to inside along middle foldline; press. Stitch close to inner edge.

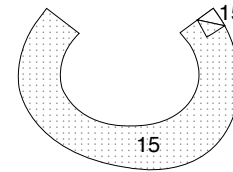


27. Turn; press. To create cuff, turn lower edge of pant to outside along remaining foldline; press. Tack in place at inner leg seam.

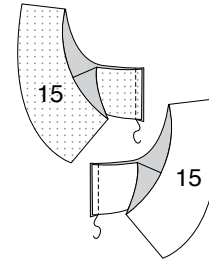


Hat

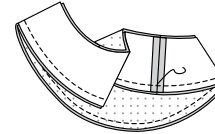
28. Fuse INTERFACING to wrong side of each matching FABRIC section, following manufacturer's instructions.



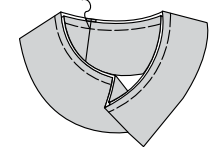
29. Stitch center back seam in each BRIM 15 section.



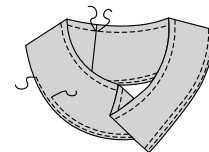
30. Pin brim sections together, matching centers. Stitch along outer edge.



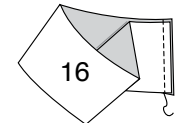
31. Turn right side out; press. Baste raw edges together.



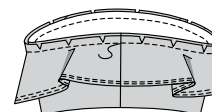
32. STAYSTITCH inner edge of brim. EDGESTITCH and TOPSTITCH outer edge of brim.



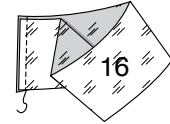
33. Stitch center back seam in CROWN 16.



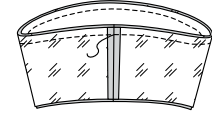
34. Pin brim to crown, matching centers and clipping brim where necessary; baste.



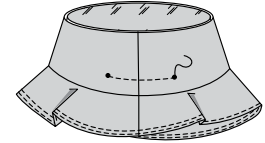
35. Stitch center back seam in crown LINING 16.



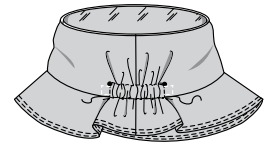
36. Pin crown lining to crown, having right sides together and matching centers. Stitch lower edges together.



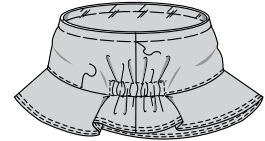
37. Turn right side out; press. To make casing, stitch along stitching line between small dots on crown.



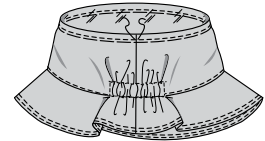
38. Cut one section from elastic, 2"(5cm) long. Insert elastic into casing, extending ends 1/4"(6mm) beyond small dots. Stitch across ends at small dots.



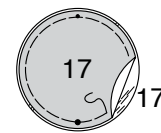
39. Baste upper edges of crown and lining together. EDGESTITCH crown along seam.



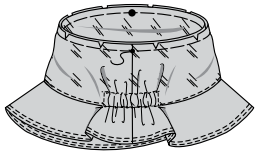
40. STAYSTITCH upper edge of crown.



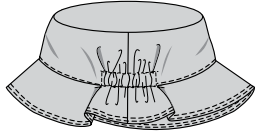
41. Pin TOP 17 to top LINING 17, having wrong sides together and matching symbols; baste.



42. Pin top to crown, matching symbols and clipping crown where necessary. Stitch.



43. Turn right side out; press.

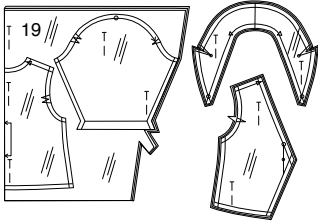


OUTFIT C

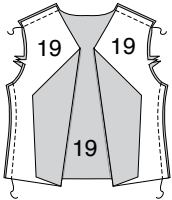
Jacket

Prepare JACKET 18 following Pattern Tissue Preparation Instructions.

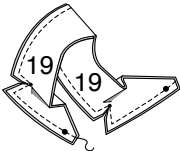
1. Cut out sections from JACKET 19.



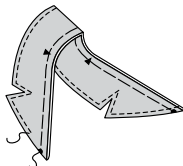
2. Stitch Front 19 sections to Back 19 at shoulders and sides.



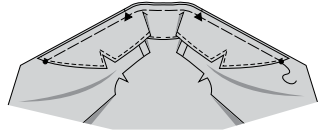
3. Stitch Collar 19 sections together along outer edge, pivoting at inner small dots, as shown. Slash to inner small dots.



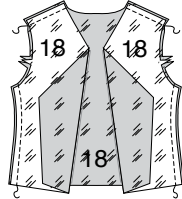
4. Turn right side out; press. Baste raw edges together. TOPSTITCH collar 1/4"(6mm), as shown.



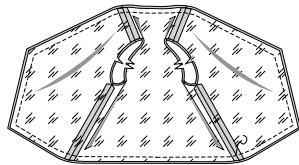
5. Pin collar to neck edge, matching symbols; baste.



6. Stitch Front Lining 18 sections to Back Lining 18 at shoulders and sides.



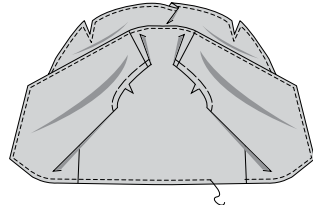
7. Pin lining to back and front sections, having right sides together. Stitch along neck, front opening and lower edge.



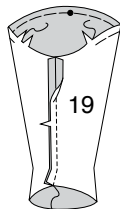
8. Turn right side out through one armhole; press. Baste raw edges together.



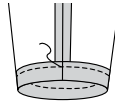
9. TOPSTITCH jacket 1/4"(6mm), as shown.



10. GATHER upper edge of each Sleeve 19 between notches, as shown. Stitch sleeve seam.



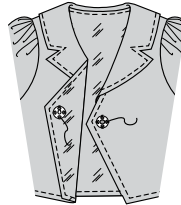
11. Turn up sleeve hem; press. Stitch close to inner edge.



12. Pin sleeve into armhole, placing large dot at shoulder seam. Adjust gathers; baste. Stitch. Press seam toward sleeve.



13. Sew snap at small dot on front opening edges.

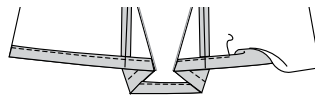


Top

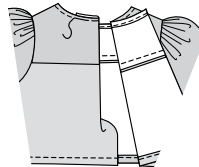
Prepare TOP 20 following Pattern Tissue Preparation Instructions.

Prepare Top in same manner as Dress A, omitting ruffles, band and hook and loop tape.

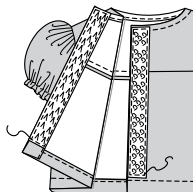
14. Make 1/2"(1.3cm) NARROW HEM on lower edge of top.



15. Turn left back opening edge on top to inside along center back; press. Baste in place.



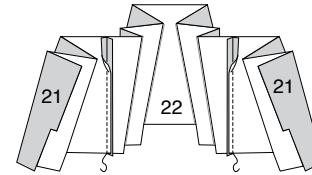
16. Cut one section from hook and loop tape, 5"(13cm) long. On outside, pin soft section of hook and loop tape to right back opening edge, as shown. Stitch in place. On inside, pin stiff section of hook and loop tape to left back opening edge, as shown. Stitch in place.



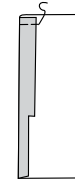
Skirt

Prepare SKIRT BACK 21, SKIRT FRONT 22 and WAISTBAND 23 following Pattern Tissue Preparation Instructions.

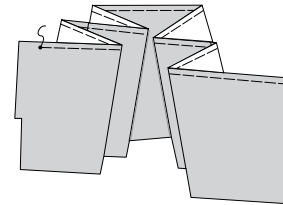
17. FINISH self facing on each Skirt Back 21 section. Stitch skirt back sections to side edges of Skirt Front 22.



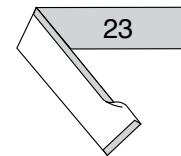
18. Turn left back facing to inside along center back; baste upper edge.



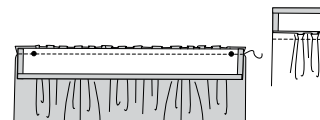
19. GATHER upper edge of skirt between small dots.



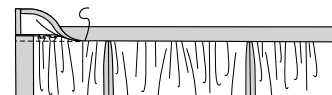
20. Turn in seam allowance on ends and upper edge of Waistband 23; press.



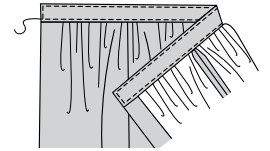
21. Pin waistband to skirt, matching centers and small dots. Adjust gathers; baste. Stitch. Press seam toward waistband.



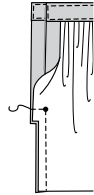
22. Turn waistband to inside along foldline; press. SLIPSTITCH ends and pressed edge over seam.



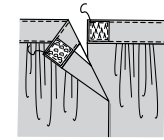
23. EDGESTITCH waistband, as shown.



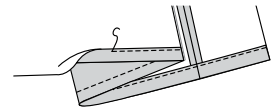
24. Open out left back facing. Stitch skirt back sections together at center back, pivoting across seam at small dot, as shown. Press seam toward left back.



25. Cut one section from hook and loop tape, 3/4"(2cm) long. On outside, pin soft section of hook and loop tape to right back opening edge of waistband, as shown. Stitch in place. On inside, pin stiff section of hook and loop tape to left back opening edge of waistband, as shown. Stitch in place.



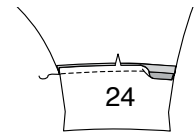
26. FINISH lower edge. Turn up hem; press. Stitch close to inner edge.



Leggings

Prepare FRONT AND BACK 6 and BAND 24 following Pattern Tissue Preparation Instructions.

27. Stitch Band 24 to lower edge of each Front And Back 6 section.



Prepare remainder of leggings in same manner as Leggings A.

Hat

Using Lining Remnant, prepare CROWN 16 and TOP 17 following Pattern Tissue Preparation Instructions.

Prepare BRIM 16, Crown 16 and Top 17 in same manner as Hat B.



Congrats!

You've completed your sewing adventure

**SHARE
YOUR** LOOK



Post your pattern and tag us
[@simplicity_creative_group](#) and [#simplicitypatterns](#)
for a chance to be featured on our social media.

Look for more PDF patterns at [simplicity.com](https://www.simplicity.com)

Have a question or need help with your sewing project call us at
1-800-782-0323

McCall's
by **design**_{group}

McCall's ©2024 a division of IG Design Group Americas Inc. • Atlanta, GA 30342 USA www.thedesigngroup.com • All Rights Reserved. www.mccall.com • Made in the U.S.A. Fabriqué aux États-Unis.
To be used for individual private home use only and not for commercial or manufacturing purposes. • A usage privé seulement et non à des fins commerciales ou de production en série. • Para uso privado solamente, no se puede utilizar con propósitos de comercialización o de producción en serie.