

McCall's®

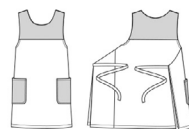
M8522



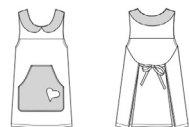
Designed and
printed in USA

Shop all the pattern brands you love @

Simplicity®.com



A



B



C



D

Easy
Facile

MISSES' COBBLER APRONS

Suggested Fabrics: A,B,C,D: Cotton/Cotton Blends. **Interfacing:** Fusible Knit.

Notions: A,B,C,D: One pkg. of ½" (1.3cm) single fold bias tape. **Also for C,D:** Two 1" - 1¼" (2.5cm - 3cm) buttons. **Also for D:** One pkg. of jumbo rick rack.

Sizes	XS (4-6)	S (8-10)	M (12-14)	L (16-18)	XL (20-22)	
-------	-------------	-------------	--------------	--------------	---------------	--

Apron A 45"*** 1¾ 1¾ 1¾ 1¾ 2½ Yds.

Contrast (Yoke Front and Back, Pockets)

45"*** 7/8 1 1 1 1 Yd.

Apron B 45"*** 2¼ 2¼ 2¾ 2½ 2½ Yds.

Contrast (Pockets, Collar)

45"*** 7/8 7/8 7/8 1 1 Yd.

Heart Appliqué - 5" x 6" remnant in each of fabric and paper-backed fusible web

Interfacing - 20" - ½ yd.

Apron C,D 45"*** 2½ 2½ 2¼ 2¼ 2¼ Yds.

Contrast (Pockets, Collar) - 45"*** - ¾ yd.

Interfacing - 20" - ¾ yd.

FINISHED GARMENT MEASUREMENTS (Includes Design and Wearing Ease)

Finished back length from base of neck

Apron A,B 33½ 34 34½ 35 35½ Ins.

Apron C,D 31½ 32 32½ 33 33½ "

TABLIERS STYLE CORDONNIER POUR JEUNES FEMMES

Tissus Conseillés: A,B,C,D: Coton/Cotonnades. **Entoilage:** Tricot thermocollant.

Mercerie: A,B,C,D: 1 paquet de ruban de biais simple de 1.3cm. **Aussi pour C,D:** 2 boutons de 2.5cm - 3cm.

Aussi pour D: 1 paquet de croquet géant.

Tailles TP P M G TG

Françaises 32-34 36-38 40-42 44-46 48-50

Européen 30-32 34-36 38-40 42-44 46-48

Tablier A 115cm* 1.6 1.6 1.6 1.6 2.3 m

Contraste (Empiècement devant et dos, Poches)

115cm* 0.8 0.9 0.9 0.9 0.9 m

Tablier B 115cm* 2.1 2.1 2.1 2.3 2.3 m

Contraste (Poches, Col)

115cm* 0.8 0.8 0.8 0.9 0.9 m

Appliqué de cœur - 13cm x 15cm morceau dans chacun de tissu et de voile thermocollant sur papier

Entoilage - 51cm - 0.5m

Tablier C,D 115cm* 1.9 1.9 1.9 2.1 2.1 m

Contraste (Poches, Col) - 115cm* - 0.7m

Entoilage - 51cm - 0.6m

MESURES DES VÊTEMENTS FINI (Motif et aisance de port compris)

Longueur finie - dos, votre nuque à l'ourlet

Tablier A,B 85 86 88 89 90 cm

Tablier C,D 80 81 83 84 85 "

*with nap **without nap

*avec sens **sans sens

M8522

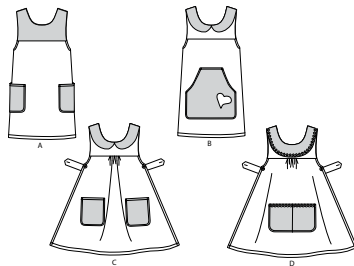
Page 1 of 4

McCall's®

English

1-800-782-0323

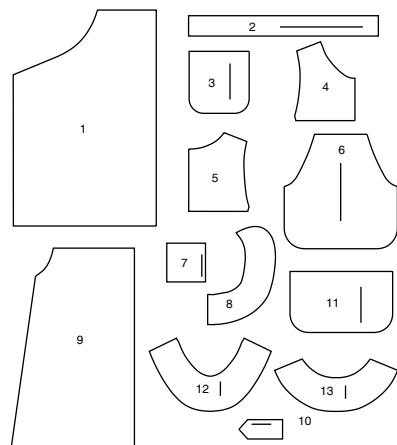
FRONT



BACK



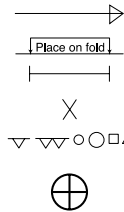
13 PATTERN PIECES



1 FRONT AND BACK - A,B
2 TIE END - A,B
3 POCKET - A,C
4 YOKE FRONT - A,B,C,D
5 YOKE BACK - A,B,C,D
6 POCKET - B
7 APPLIQUE - B

8 COLLAR - B,C
9 LOWER FRONT AND BACK - C,D
10 TAB - C,D
11 POCKET - D
12 COLLAR FRONT - D
13 COLLAR BACK - D

PATTERN MARKINGS



GRAINLINE: Place on straight grain of fabric, parallel to selvage or fold.

FOLDLINE: Place line on fold of fabric.

BUTTONHOLE MARKING: Indicates exact length and placement of buttonholes.

BUTTON MARKING: Indicates button placement.

NOTCHES AND SYMBOLS: For matching seams and construction details.

Indicates the Bustline, Waistline, Hip and/or Biceps. Measurements refer to circumference of Finished Garment (Body Measurement + Wearing Ease + Design Ease). Adjust pattern if necessary. The measurement excludes pleats, tucks, darts and seam allowances.

SEAM ALLOWANCE: 5/8" (1.5cm) included unless otherwise indicated, but not printed on tissue.

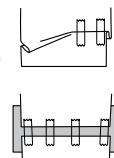
ADJUST IF NECESSARY

Lengthen or Shorten at adjustment lines (==) or where indicated on pattern. If substantial length is added, you may need to purchase additional fabric.

TO SHORTEN: Crease along adjustment line. Make a fold half the amount needed. Tape in place.

TO LENGTHEN: Slash between adjustment lines. Spread amount as needed, keeping edges parallel. Tape over paper.

When Alteration lines are not on tissue, lengthen or shorten at lower edge.



CUTTING AND MARKING

SHRINK FABRIC if not labeled pre-shrunk. Press.

CIRCLE LAYOUT for View, Size, Fabric Width.

Use **WITH NAP** layout for fabrics with one-way designs, nap, pile or surface shading. Because most knits have surface shading, a with nap layout is used.

For **DOUBLE THICKNESS (WITH FOLD)** - fold fabric with right sides together.

*** DOUBLE THICKNESS (WITHOUT FOLD)** - For fabrics with nap, fold fabric crosswise, right sides together. Mark as shown. Cut along crosswise fold of fabric (A). Turn upper layer 180° so arrows go in same direction and place over lower layer, right sides together (B).

For **SINGLE THICKNESS** - place fabric right side up. (For Fur Pile fabrics, place pile side down.)

★ Cut other pieces first, allowing enough fabric to cut this piece. Open fabric. For "Cut 1" pieces, cut piece once on single layer of fabric with piece face up on right side of fabric.

Pattern may have cutting lines for several sizes. Select the proper cutting line or pattern pieces for your size.

Before **CUTTING** place all pieces on fabric according to layout. Pin. (**Layouts show approximate position of pattern pieces; position may vary according to your pattern size.**) Cut **ACCURATELY**, cutting notches outward.

Before removing pattern, **TRANSFER MARKINGS** and lines of construction to Wrong Side of fabric, using the Pin and Chalk Pencil method or Tracing Paper and Dressmaker Wheel. Markings needed on right side of fabric should be thread traced.

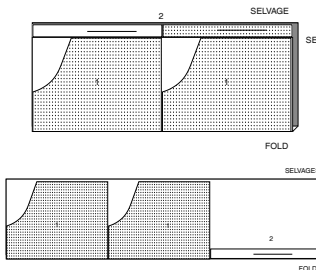
NOTE: Broken-line boxes (a! b! c!) in layouts represent pieces cut by measurements provided.

CUTTING LAYOUTS

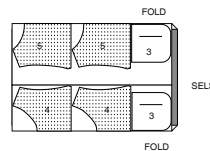
RIGHT SIDE OF PATTERN	WRONG SIDE OF PATTERN	RIGHT SIDE OF FABRIC	WRONG SIDE OF FABRIC
-----------------------	-----------------------	----------------------	----------------------

APRON A
PIECES 1,2

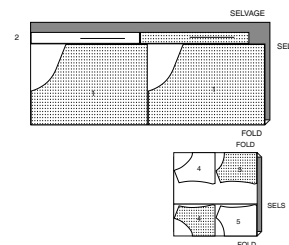
45" (115CM)
WITH NAP
SIZES XS S M L


CONTRAST A (YOKE FRONT AND BACK, POCKETS)
PIECES 3 4 5

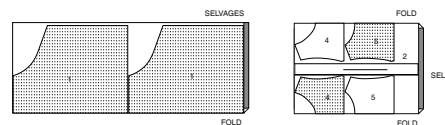
45" (115CM)
WITH NAP
ALL SIZES


APRON B
PIECES 1 2 4 5

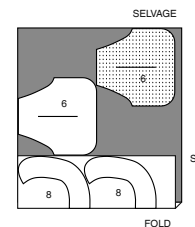
45" (115CM)
WITH NAP
SIZES XS S M



45" (115CM)
WITH NAP
SIZES L XL


CONTRAST B (POCKETS, COLLAR)
PIECES 6 8

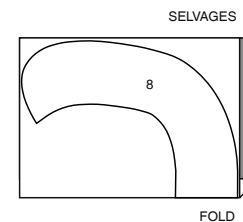
45" (115CM)
WITH NAP
ALL SIZES

**HEART APPLIQUE**

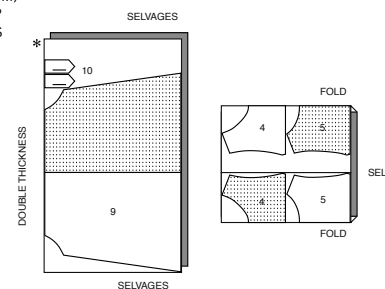
CUT ONE OF EACH PIECE 7 FROM FABRIC AND PAPER BACKED FUSIBLE WEB REMNANTS.

INTERFACING B
PIECE 8

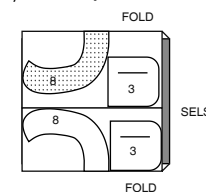
20" (51CM)
ALL SIZES


APRON C, D
USE PIECES 4 5 9 10

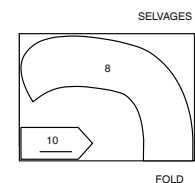
45" (115CM)
WITH NAP
ALL SIZES


CONTRAST C (POCKETS, COLLAR)
PIECES 3 8

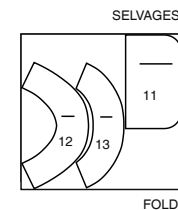
45" (115CM)
WITH NAP
ALL SIZES


INTERFACING C
PIECES 8 10

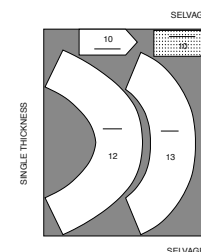
20" (51CM)
ALL SIZES


CONTRAST D (POCKETS, COLLAR)
PIECES 11 12 13

45" (115CM)
WITH NAP
ALL SIZES

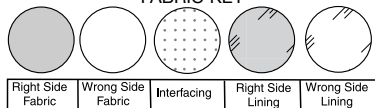

INTERFACING D
PIECES 10 12 13

20" (51CM)
ALL SIZES



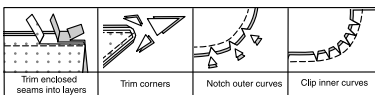
SEWING INFORMATION

FABRIC KEY



SEAM ALLOWANCES

Use 5/8" (1.5cm) seam allowances unless otherwise indicated.



PIN AND FIT

Pin or baste seams, **RIGHT SIDE TOGETHER**, matching notches. Fit garment before stitching major seams.

PRESS

Press seam allowances flat; then open unless otherwise stated. Clip where necessary so they lie flat.

GLOSSARY

Sewing methods in **BOLD TYPE** have Sewing Tutorial Video available. Scan QR CODE to watch videos:

EASE/GATHER - See sewing two row gathers video.

EDGESTITCH - See how to edgestitch video.

NARROW HEM - See sewing narrow hems video.

REINFORCE - See Machine Stitches: "how to reinforce" video.

SLIPSTITCH - See how to slipstitch video.

TOPSTITCH - See how to topstitch video.

UNDERSTITCH - See how to understitch video.

SEWING TUTORIALS



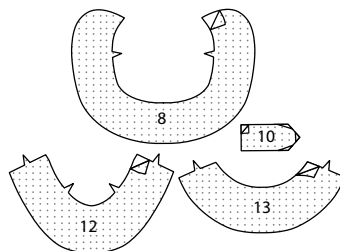
Build your skills viewing short, easy-to-follow videos at simplicity.com/sewingtutorials

APRON A, B, C, D

NOTE: Under each sub-heading, the first View will be illustrated, unless otherwise indicated

INTERFACING

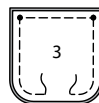
1. Trim corners of **INTERFACING**, as shown. Fuse interfacing to wrong side of each matching **FABRIC** section, following manufacturer's instructions.



FRONT AND BACK A, B

VIEW A:

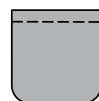
2. With **RIGHT** sides together, for each side, pin two **POCKET** (3) sections together, matching large dots, having raw edges even. Stitch outer edges, leaving an opening at lower edge for turning. Stitch. Trim.



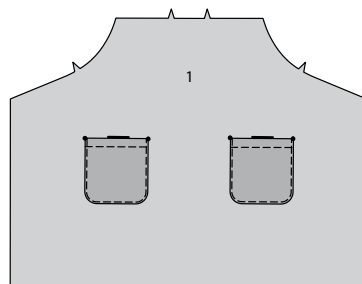
3. Turn. Press. **SLIPSTITCH** opening.



4. **TOPSTITCH** pocket 1"(2.5cm) from upper edge.



5. For front, pin pockets to one **FRONT AND BACK** (1) section, matching symbols. **EDGESTITCH** side and lower edges. **NOTE:** Remaining front and back section will be used as back.



VIEW B:

6. Apply paper backed fusible web to **WRONG** side of **APPLIQUE** (7), following manufacturer's directions. Pin pattern to **RIGHT** side of prepared fabric. Cut out applique.

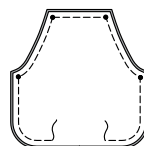


7. Remove paper backing from applique. Pin applique to one **POCKET** (6) section within marking. Fuse applique in place, following manufacturer's directions. **EDGESTITCH** applique.

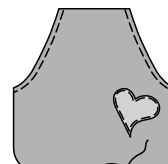
NOTE: Remaining pocket section will be used as lining.



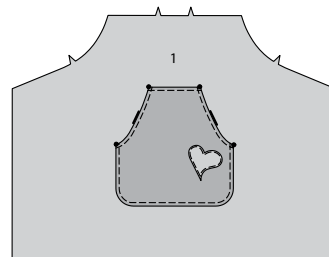
8. With **RIGHT** sides together, pin pocket **LINING** to pocket, matching large dots, having raw edges even. Stitch outer edges, leaving an opening at lower edge for turning. Stitch. Trim.



9. Turn. Press. **SLIPSTITCH** opening. **TOPSTITCH** upper side edges of pockets, as shown.



10. For front, pin pocket to one **FRONT AND BACK** (1) section, matching symbols. **TOPSTITCH** upper, side and lower edges, as shown. **NOTE:** Remaining front and back section will be used as back.

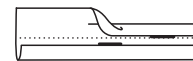


VIEWS A, B:

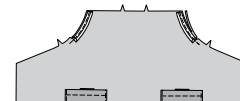
11. **REINFORCE** front through large dots. Clip to large dots.



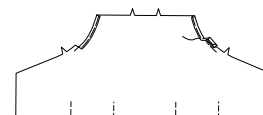
12. Open out one folded edge of bias tape; press out crease by pressing lightly.



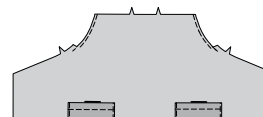
13. Pin bias tape to upper side edges of front, from upper edge to clip, placing crease along seamline, turning under end at clip, as shown. Stitch along crease. Trim front seam allowance even with bias tape.



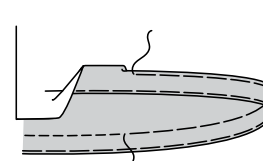
14. Turn bias tape to inside along seam. Press. Baste in place.



15. On outside, stitch along basting.



16. Turn up hem. Baste close to fold. Turn in 1/4"(6mm) on raw edge. Baste hem in place close to upper edge. Press. **TOPSTITCH** hem along upper basting.



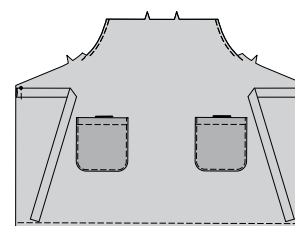
17. With **RIGHT** sides together, fold **TIE END** (2) in half lengthwise, having raw edges even. Stitch in a 1/4"(6mm) seam, leaving end with small dot open.



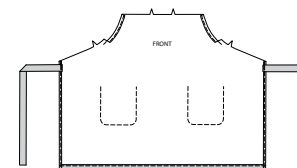
18. Turn. Press. Baste raw edges.



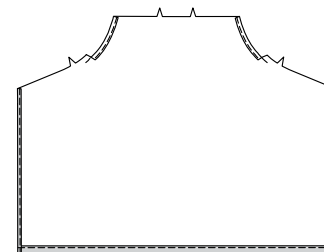
19. On **OUTSIDE**, pin tie ends to front, matching small dots, having raw edges even. Stitch.



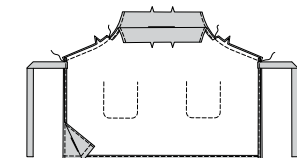
20. Make 3/4"(2cm) **NARROW HEM** at side edges of front.



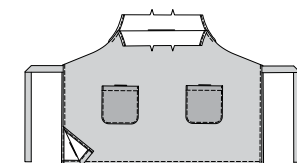
21. Repeat steps 11 through 16 for back. Make 3/4"(2cm) **NARROW HEM** at side edges of back.



22. With **RIGHT** sides together, pin front to back at upper side edges. Stitch, ending at clip.

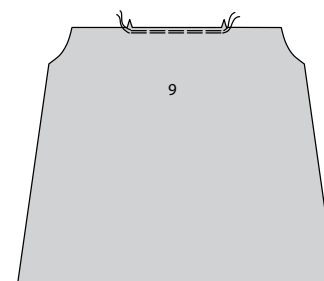


23. Turn **RIGHT** side out. Press.



FRONT AND BACK C, D

24. For front, **GATHER** upper edge of one **LOWER FRONT AND BACK** (9) section between notches. **NOTE:** Remaining front and back section will be used as back.



VIEW C:

25. With RIGHT sides together, for each side, pin two POCKET (3) sections together, matching large dots, having raw edges even. Stitch outer edges, leaving an opening at lower edge for turning. Stitch. Trim.



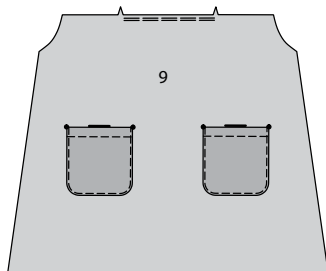
26. Turn. Press. **SLIPSTITCH** opening.



27. **TOPSTITCH** pocket 1"(2.5cm) from upper edge.



28. Pin pockets to front, matching symbols. **EDGE STITCH** side and lower edges.

**VIEW D:**

29. With RIGHT sides together, pin POCKET (11) sections together, matching large dots, having raw edges even. Stitch outer edges, leaving an opening at lower edge for turning. Stitch. Trim.



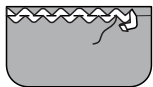
30. Turn. Press. **SLIPSTITCH** opening.



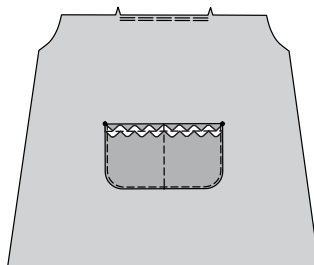
31. **TOPSTITCH** pocket 1"(2.5cm) from upper edge.



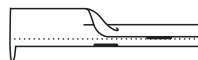
32. Pin trim to upper edge of pocket, turning under ends, centering along placement line. Stitch along center of trim.



33. Pin pocket to front, matching symbols. **EDGE STITCH** side and lower edges. Stitch along stitching line.

**VIEWS C, D:**

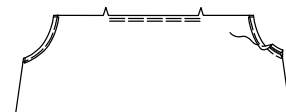
34. Open out one folded edge of bias tape; press out crease by pressing lightly.



35. Pin bias tape to upper side edges of front, placing crease along seamline, as shown. Stitch along crease. Trim front seam allowance even with bias tape.



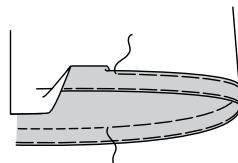
36. Turn bias tape to inside along seam. Press. Baste in place.



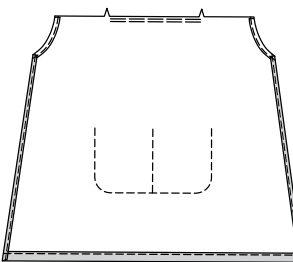
37. On outside, stitch along basting.



38. Turn up hem. Baste close to fold. Turn in 1/4"(6mm) on raw edge. Baste hem in place close to upper edge. Press. **TOPSTITCH** hem along upper basting.



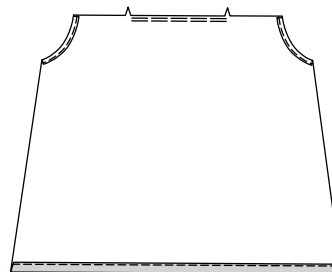
39. Make 3/4"(2cm) **NARROW HEM** at side edges of front.



40. Sew buttons to front at small dots.



41. **GATHER** upper edge of back.
Repeat steps 34 through 38 for back.



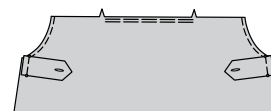
42. For each side, stitch one interfaced and one uninterfaced TAB (10) section together in 1/4"(6mm) seam, leaving straight end open, as shown. Trim.



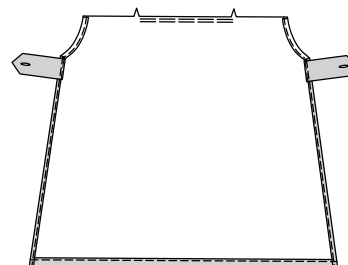
43. Turn. Press. Baste raw edges. Make buttonhole in tab at marking.



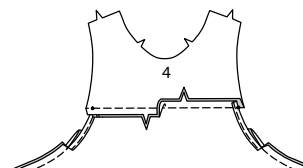
44. On OUTSIDE, pin tabs to back, matching small dots, having raw edges even. Stitch.



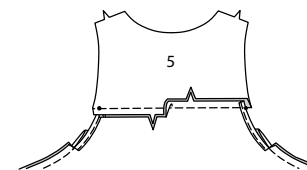
45. Make 3/4"(2cm) **NARROW HEM** at side edges of back.

**YOKE****VIEWS A, B:**

46. Pin one YOKE FRONT (4) section to upper edge of front, matching notches, and small dots. Stitch between small dots. Press seam toward yoke front. **NOTE:** Remaining yoke front section will be used as lining.

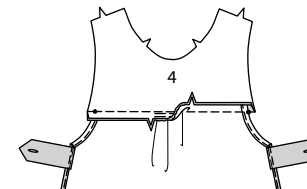


47. Pin one YOKE BACK (5) section to upper edge of back, matching notches and small dots. Stitch between small dots. Press seam toward yoke back. **NOTE:** Remaining yoke back section will be used as lining.

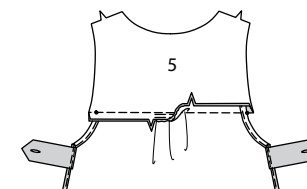
**VIEWS C, D:**

48. Pin one YOKE FRONT (4) section to upper edge of front, matching notches and small dots. Adjust gathers; baste. Stitch between small dots. Press seam toward yoke front.

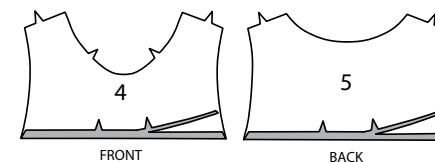
NOTE: Remaining yoke front section will be used as lining.



49. Pin one YOKE BACK (5) section to upper edge of back, matching notches and small dots. Adjust gathers; baste. Stitch between small dots. Press seam toward yoke back. **NOTE:** Remaining yoke back section will be used as lining.

**FINISHING****VIEW A:**

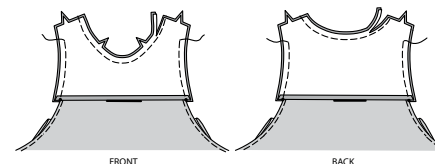
50. Turn in seam allowance on lower edge of yoke front LINING and yoke back LINING. Press. Trim pressed seam allowance to 3/8"(1cm).



FRONT

BACK

51. With RIGHT sides together, pin linings to front and back, matching centers, having raw edges even. Stitch neck and armhole edges, leaving armhole open from 3"(7.6cm) below upper edges, as shown. Trim. **UNDERSTITCH** neck edge of lining.

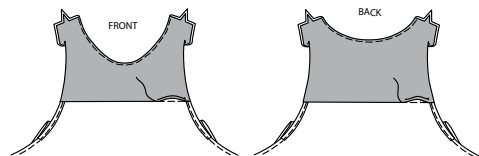


FRONT

BACK



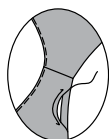
52. Turn. Press. **SLIPSTITCH** pressed edges over seams.



53. Open out lining at shoulders. Pin shoulder lining edges together; pin shoulder edges together. Stitch in one continuous seam.

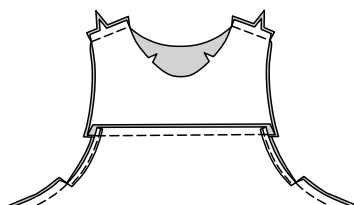


54. Turn down lining, turning in remainder of seam allowances on armhole edges, as shown. Press. **SLIPSTITCH** armhole edges.

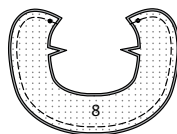


VIEWS B, C:

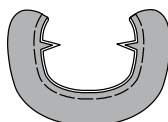
55. Stitch front to back at shoulders.



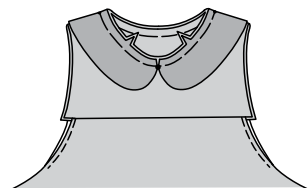
56. With **RIGHT** sides together, pin **COLLAR** (8) sections together, matching symbols. Stitch, leaving notched edge open. Trim.



57. Turn. Press. Baste raw edges.

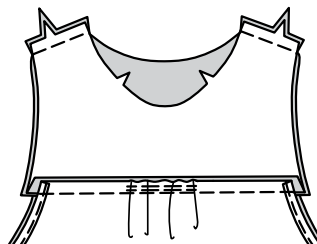


58. On **OUTSIDE**, pin collar to neck edge, matching centers and large dots, placing small dots at shoulder seams. Baste.

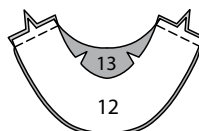


VIEW D:

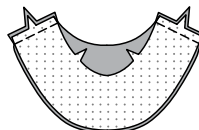
59. Stitch front to back at shoulders.



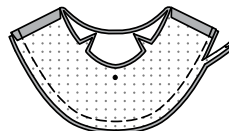
60. With **RIGHT** sides together, stitch uninterfaced **COLLAR FRONT** (12) to uninterfaced **COLLAR BACK** (13) at shoulder edges.



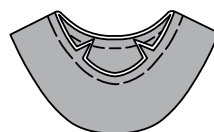
61. For facing, stitch interfaced collar front to interfaced collar back at shoulder edges.



62. With **RIGHT** sides together, pin collar to collar facing, matching symbols. Stitch, leaving notched edge open. Trim.



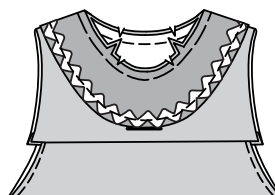
63. Turn. Press. Baste raw edges.



64. Pin trim to collar, turning under ends at one seam, centering along placement line. Stitch along center of trim. **SLIPSTITCH** ends.

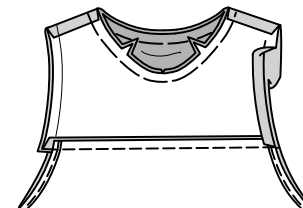


65. On **OUTSIDE**, pin collar to neck edge, matching centers and shoulder seams. Baste.

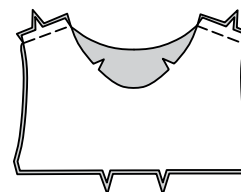


VIEWS B, C, D:

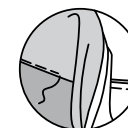
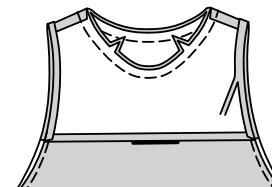
66. Turn in seam allowances on armhole edges of yoke. Press.



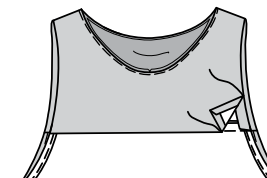
67. Stitch yoke front lining to yoke back lining at shoulders.



68. Turn in seam allowance on lower and armhole edges of yoke lining. Press. Trim pressed seam allowances to 3/8" (1cm). With **RIGHT** sides together, pin lining to front and back, matching centers, symbols, and notches. Stitch neck edge. **UNDERSTITCH** neck edge of lining as far as possible.



69. Turn. Press. **SLIPSTITCH** pressed edges over seams and armhole edges together.





Congrats!

You've completed your sewing adventure

SHARE YOUR LOOK



Post your pattern and tag us
[@simplicity_creative_group](#) and [#simplicitypatterns](#)
for a chance to be featured on our social media.

Look for more PDF patterns at [simplicity.com](#)

Have a question or need help with your sewing project call us at
1-800-782-0323

McCall's
by **design**_{group}

McCall's ©2024 a division of IG Design Group Americas Inc. • Atlanta, GA 30342 USA [www.thedesigngroup.com](#) • All Rights Reserved. [www.mccall.com](#) • Made in the U.S.A. Fabriqué aux États-Unis.

To be used for individual private home use only and not for commercial or manufacturing purposes. • A usage privé seulement et non à des fins commerciales ou de production en série. • Para uso privado solamente, no se puede utilizar con propósitos de comercialización o de producción en serie.