

McCall's

M8520



Designed and printed in USA

Easy

Facile

CHILDREN'S AND GIRLS' KNIT DRESSES

Suggested Fabrics: Stretch Knits only such as Cotton Knits, Interlock, Jerseys, Performance Knits. See Stretch Gauge. **Interfacing:** Fusible Knit.

Notions: A,B,C: ¼" (6mm) elastic: ¾ yd. (0.7m) for Children, 1 yd. (0.9m) for Girls, one pkg. of ½" (1.3cm) single fold bias tape.

Sizes	CHILDREN'S					GIRLS'			
	3	4	5	6	7	8	10	12	14

BODY MEASUREMENTS: Select pattern size based on body measurements

Chest	22	23	24	25	26	27	28½	30	32	Ins.
Waist	20½	21	21½	22	23	23½	24½	25½	26½	"
Hip	—	24	25	26	27	28	30	32	34	"
Back-neck to waist	9	9½	10	10½	11½	12	12¾	13½	14¼	"
Height	38	41	44	47	50	52	56	58½	61	"

Interfacing A,B,C

60**	½	½	½	½	½	¾	¾	¾	¾	Yd.
Dress A 60**	1½	1½	1¾	1¾	1¾	1¾	1¾	2	2½	Yds.
Dress B 60**	1¼	1¼	1½	1½	1½	1¾	1¾	2	2½	Yds.
Dress C 60**	1¾	1½	1¾	1¾	2	2	2½	2½	2½	Yds.

FINISHED GARMENT MEASUREMENTS (Includes Design and Wearing Ease)

A,B,C Chest	22¼	23¼	24¼	25¼	24	25	26½	28	30	Ins.
A,B,C Waist	21	22	23	24	21½	22½	24	25½	27½	"

Finished back length from base of neck

Dress A,B	21	22½	24½	26½	27¼	29	31	33	35	Ins.
Dress C	30	31½	33½	35½	40¾	42½	44½	46½	48½	"

*with nap **without nap

ROBES EN TRICOT POUR ENFANTS ET FILLETES

Tissus Conseillés: Tricot extensibles seulement tels que Tricot de coton, Interlock, Jerseys, Tricot performants. Reportez-vous au taux d'élasticité. **Entoilage:** Tricot thermocollant.

Merci: **A,B,C:** Élastique de 6mm: 0.7m pour enfants, 0.9m pour fillettes, 1 paquet de ruban de biais simple de 1.3cm.

Tailles	ENFANTS					FILLETES			
	3	4	5	6	7	8	10	12	14

MESURES DU CORPS: Choisissez la taille du patron basée sur les mesures du corps

Poitrine	56	58.5	61	63.5	66	68.5	72.5	76	81.5	cm
Taille	52	53.5	54.5	56	58.5	59.5	62	65	67.5	"
Hanches	—	61	63.5	66	68.5	71	76	81.5	86.5	"
Dos du cou à la taille	23	24	25.5	26.5	29	30.5	32.5	34.5	36	"
Hauteur	96.5	104	112	120	127	132	143	149	155	"

Entoilage A,B,C

150cm*	0.5	0.5	0.5	0.5	0.5	0.5	0.6	0.6	0.6	m
Robe A 150cm*	1.0	1.0	1.1	1.3	1.5	1.6	1.7	1.7	1.8	m
Robe B 150cm*	1.1	1.1	1.3	1.5	1.5	1.6	1.7	1.8	1.9	m
Robe C 150cm*	1.3	1.3	1.5	1.6	1.8	1.8	1.9	2.2	2.3	m

MESURES DES VÊTEMENTS FINI (Motif et aisance de port compris)

A,B,C Poitrine	57	59	62	64	61	64	67	71	76	cm
A,B,C Taille	53	56	58	61	55	57	61	65	70	"

Longueur finie – dos, votre nuque à l'ourlet

Robe A,B	53	57	62	67	69	74	79	84	89	cm
Robe C	76	80	85	90	104	108	113	118	123	"

*avec sens **sans sens



A



B



C



C

Use the 1 inch (2.54cm) box to ensure you are using rule at 100%

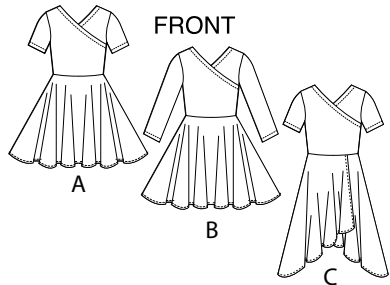
Utilisez la boîte de 2.54 cm pour vous assurer d'utiliser la règle à 100%.

Utilizar un cuadrado de 2.54 cm para asegurarse de estar usando la regla al 100%.

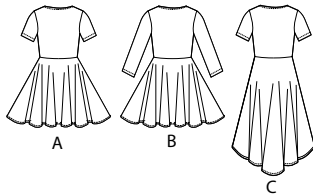
4" of crosswise folded fabric must **STRETCH** from here
10 cm de tricot plié sur le travers et sur le droit-fil doivent s'étirer de cette limite à celle là
10 cm de tejido de punto doblado (a lo largo y luego al través) deben estirarse desde acá

To Here 50%
jusqu'ici 50%
hasta acá 50%

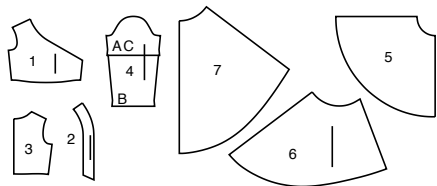
When using the Pick-A-Knit® rule to measure your fabrics stretch capacity, rule must be viewed or printed at 100%.
Quand vous utilisez le taux d'élasticité pour mesurer la capacité d'élasticité des tissus, le taux doit être visible ou imprimé à 100%.
Al utilizar el calibre de elasticidad para medir la capacidad de elasticidad de las telas, el calibre debe estar visible o impreso a 100%.



BACK



7 PATTERN PIECES



- 1 Bodice Front-A,B,C
- 2 Front Facing-A,B,C
- 3 Bodice Back-A,B,C
- 4 Sleeve-A,B,C
- 5 Skirt Front and Back-A,B
- 6 Skirt Front-C
- 7 Skirt Back-C

PATTERN MARKINGS

GRAINLINE: Place on straight grain of fabric, parallel to selvage or fold.

FOLDLINE: Place line on fold of fabric.

BUTTONHOLE MARKING: Indicates exact length and placement of buttonholes.

BUTTON MARKING: Indicates button placement.

NOTCHES AND SYMBOLS: For matching seams and construction details.

Indicates the Bustline, Waistline, Hip and/or Biceps. Measurements refer to circumference of Finished Garment (Body Measurement + Wearing Ease + Design Ease). Adjust pattern if necessary. The measurement excludes pleats, tucks, darts and seam allowances.

SEAM ALLOWANCE: 5/8" (1.5cm) included unless otherwise indicated, but not printed on tissue.

ADJUST IF NECESSARY

Lengthen or Shorten at adjustment lines (==) or where indicated on pattern. If substantial length is added, you may need to purchase additional fabric.

TO SHORTEN: Crease along adjustment line. Make a fold half the amount needed. Tape in place.

TO LENGTHEN: Slash between adjustment lines. Spread amount as needed, keeping edges parallel. Tape over paper.

When Alteration lines are not on tissue, lengthen or shorten at lower edge.

CUTTING AND MARKING

SHRINK FABRIC if not labeled pre-shrunk. Press.

CIRCLE LAYOUT for View, Size, Fabric Width.

Use **WITH NAP** layout for fabrics with one-way designs, nap, pile or surface shading. Because most knits have surface shading, a with nap layout is used.

For **DOUBLE THICKNESS (WITH FOLD)** - fold fabric with right sides together.

*** DOUBLE THICKNESS (WITHOUT FOLD)** - For fabrics with nap, fold fabric crosswise, right sides together. Mark as shown. Cut along crosswise fold of fabric (A). Turn upper layer 180° so arrows go in same direction and place over lower layer, right sides together (B).

For **SINGLE THICKNESS** - place fabric right side up. (For Fur Pile fabrics, place pile side down.)

★ Cut other pieces first, allowing enough fabric to cut this piece. Open fabric. For "Cut 1" pieces, cut piece once on single layer of fabric with piece face up on right side of fabric.

Pattern may have cutting lines for several sizes. Select the proper cutting line or pattern pieces for your size.

Before **CUTTING** place all pieces on fabric according to layout. Pin. (Layouts show approximate position of pattern pieces; position may vary according to your pattern size.) Cut **ACCURATELY**, cutting notches outward.

Before removing pattern, **TRANSFER MARKINGS** and lines of construction to Wrong Side of fabric, using the Pin and Chalk Pencil method or Tracing Paper and Dressmaker Wheel. Markings needed on right side of fabric should be thread traced.

NOTE: Broken-line boxes (a| b| c|) in layouts represent pieces cut by measurements provided.

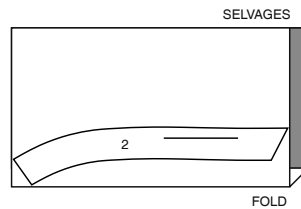
CUTTING LAYOUTS

RIGHT SIDE OF PATTERN	WRONG SIDE OF PATTERN	RIGHT SIDE OF FABRIC	WRONG SIDE OF FABRIC
-----------------------	-----------------------	----------------------	----------------------

INTERFACING A, B, C

USE PIECE: 2

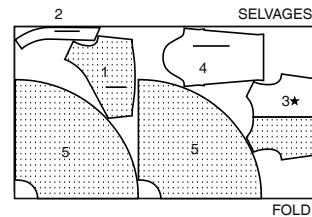
20" (51 CM)
WITHOUT NAP
ALL SIZES



DRESS B

USE PIECES: 1 2 3 4 5

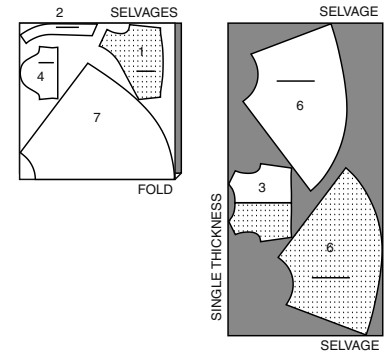
60" (150 CM)
WITH NAP
SIZES 3 4 5 6



DRESS C

USE PIECES: 1 2 3 4 6 7

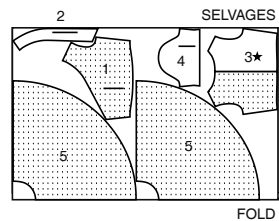
60" (150 CM)
WITH NAP
SIZES 3 4 5 6



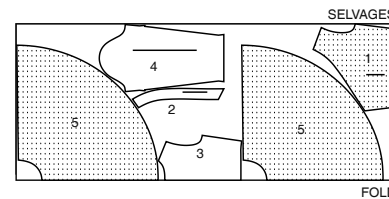
DRESS A

USE PIECES: 1 2 3 4 5

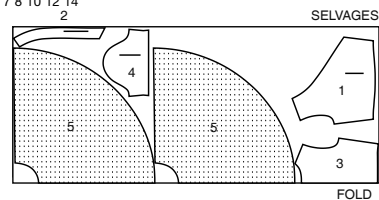
60" (150 CM)
WITH NAP
SIZES 3 4 5 6



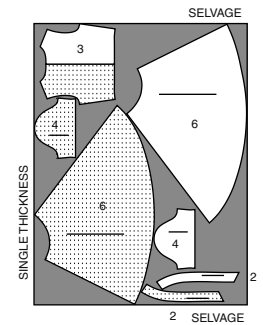
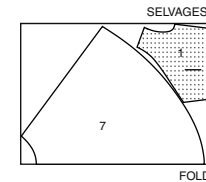
60" (150 CM)
WITH NAP
SIZES 7 8 10 12 14



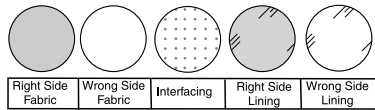
60" (150 CM)
WITH NAP
SIZES 7 8 10 12 14



60" (150 CM)
WITH NAP
SIZES 7 8 10 12 14

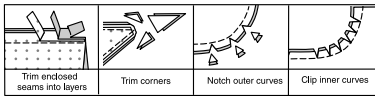


SEWING INFORMATION
FABRIC KEY



SEAM ALLOWANCES

Use 1/4" (6mm) seam allowances unless otherwise indicated.



PIN AND FIT

Pin or baste seams, **RIGHT SIDE TOGETHER**, matching notches. Fit garment before stitching major seams.

PRESS

Press seam allowances flat; then open unless otherwise stated. Clip where necessary so they lie flat.

GLOSSARY

Sewing methods in **BOLD TYPE** have Sewing Tutorial Video available. Scan **QR CODE** to watch videos:

EASE/GATHER - see **Gathering**: "sewing two row gathers" video.

FINISH - see **Seams**: "how to finish seam allowances" video.

NARROW HEM - see **Hems**: "sewing narrow hems" video.

SLEEVE - see **Armholes/Sleeves**: "sewing a set-in sleeve" video.

STAYSTITCH - see **Machine Stitches**: "how to do stay-stitching" video.

TOPSTITCH - see **Machine Stitches**: "how to topstitch" video.

UNDERSTITCH - see **Machine Stitches**: "how to understitch" video.

PATTERN PIECES WILL BE IDENTIFIED BY NUMBERS THE FIRST TIME THEY ARE USED.

STITCH SEAMS WITH RIGHT SIDES TOGETHER UNLESS OTHERWISE STATED.

SEWING TUTORIALS



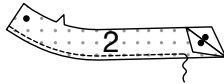
Build your skills viewing short, easy-to-follow videos at simplicity.com/sewingtutorials

DRESS A, B, C

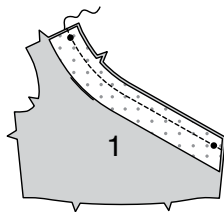
NOTE: The first view mentioned will be shown, unless otherwise indicated.

BODICE

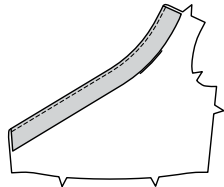
1. Fuse **INTERFACING** to **WRONG** side of **FRONT FACING** (2), following manufacturer's instructions. **FINISH** long unnotched edge.



2. With **RIGHT** sides together, stitch front facing to **BODICE FRONT** (1) matching notches and small dots. Trim. **UNDERSTITCH** facing.



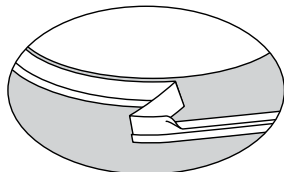
3. Turn facing to **INSIDE**. Press.



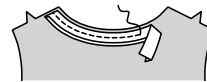
4. STAYSTITCH neck edge of **BODICE BACK** (3) 1/4" (6mm) from raw edge in direction of arrows.



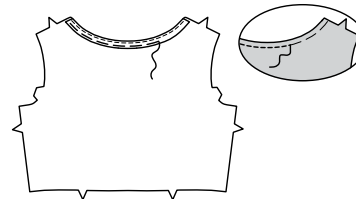
5. Open out one folded edge of bias tape; press out crease and pre-shape tape to match curve of back neck edge by pressing lightly.



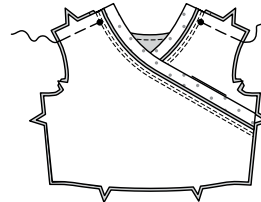
6. Pin bias tape to back neck edge, having raw edges even. Stitch in a 3/8" (1cm) seam. Trim seam allowance to a scant 1/4" (6mm). **UNDERSTITCH** tape.



7. Turn tape to inside. Press. Baste in place. On **OUTSIDE**, **TOPSTITCH** along basting.



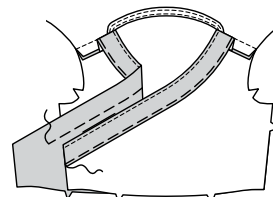
8. Open out front facings. Pin back to fronts at shoulder matching notches and small dots. Baste.



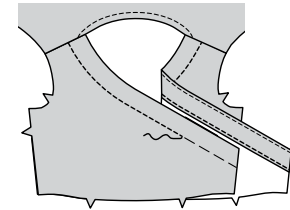
9. Pin **RIGHT** side of front facing to **WRONG** side of bodice back at shoulder. Stitch shoulder seams through all thicknesses.



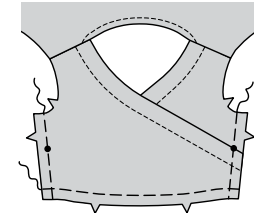
10. Turn facing to inside, turning shoulder seam toward front. Press. Baste facing close to raw edge.



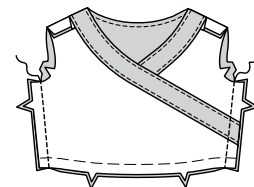
11. On **OUTSIDE**, stitch facing using basting as a guide.



12. With **RIGHT** sides facing up, lap **RIGHT** bodice front over **LEFT** bodice front, matching center fronts, notches, and small dots, having raw edges even. Baste sides and lower edges together.



13. Stitch bodice front to bodice back at sides.



SLEEVE

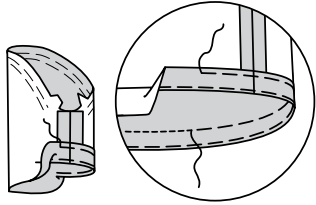
14. EASE/GATHER cap of **SLEEVE** (4) between notches.

Stitch under arm seam of sleeve.

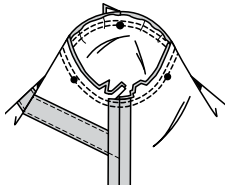


15. Turn up a 1"(2.5cm) hem on lower edge of sleeve. Baste close to fold. Trim hem to an even width. Baste in place 1/4"(6mm) from raw edge.

TOPSTITCH hem in place along upper basting, as shown.

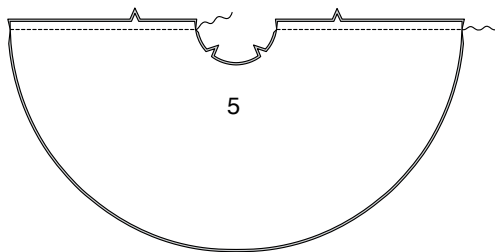


16. With right sides together, pin sleeve into armhole with center small dot at shoulder seam, matching underarm seams, notches and remaining small dots. Adjust ease, baste. Stitch. Stitch again 1/4"(6mm) away in seam allowance. Trim close to stitching.



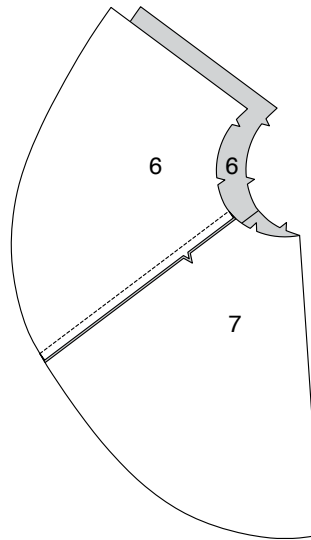
SKIRT

17. Views A, B: Stitch SKIRT FRONT AND BACK (5) together at sides.

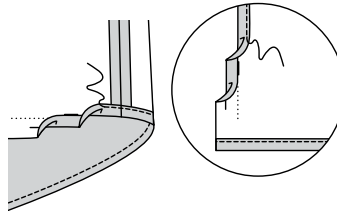


View C

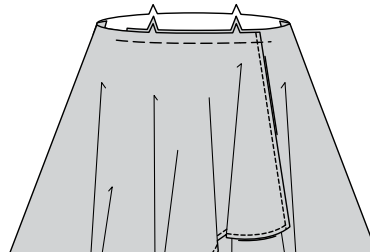
18. Stitch SKIRT FRONT (6) sections to SKIRT BACK (7) at sides.



19. Make a **NARROW HEM** on lower edge of skirt, easing in fullness, as needed. Make a **NARROW HEM** on opening edges of skirt.

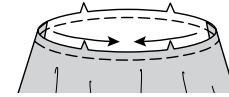


20. On **OUTSIDE**, lap RIGHT skirt front over LEFT skirt front matching notches and center fronts. Baste waist edges together.

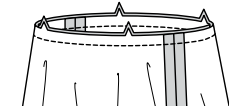


CONTINUE AS FOLLOWS FOR VIEWS A, B, C

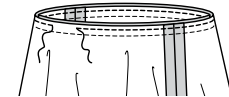
21. **STAYSTITCH** upper edge of skirt in direction of arrows.



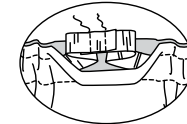
22. With **RIGHT** sides together, pin skirt to bodice matching notches, centers and side seams. Baste. Stitch.



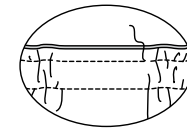
23. To form casing for elastic, stitch waist seam allowances together 1/4"(6mm) from raw edge, leaving an opening and keeping garment free.



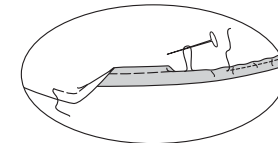
24. Cut 1/4"(6mm) wide elastic the measurement of waist plus 1"(25mm). Insert elastic through opening in casing. Lap ends; hold with safety pin. Try on and adjust if necessary. Stitch ends of elastic securely.



25. Stitch opening in casing, stretching elastic while stitching.



26. Views A, B: Make a **NARROW HEM** on lower edge of skirt, easing in fullness, as needed.





Congrats!

You've completed your sewing adventure

**SHARE
YOUR** LOOK



Post your pattern and tag us
[@simplicity_creative_group](#) and [#simplicitypatterns](#)
for a chance to be featured on our social media.

Look for more PDF patterns at [simplicity.com](https://www.simplicity.com)

Have a question or need help with your sewing project call us at
1-800-782-0323

McCall's
by **design**_{group}

McCall's ©2024 a division of IG Design Group Americas Inc. • Atlanta, GA 30342 USA www.thedesigngroup.com • All Rights Reserved. www.mccall.com • Made in the U.S.A. Fabriqué aux États-Unis.
To be used for individual private home use only and not for commercial or manufacturing purposes. • A usage privé seulement et non à des fins commerciales ou de production en série. • Para uso privado solamente, no se puede utilizar con propósitos de comercialización o de producción en serie.