

McCall's

M8514



Designed and printed in USA

Scan QR code for a Sew-Along video tutorial.
Scannez le code QR pour un didacticiel vidéo de couture.



Average

MISSES' AND WOMEN'S ROMPER AND JUMPSUITS

Suggested Fabrics: Cotton Blends, Denim, Linen, Twill. **Interfacing:** Lightweight Fusible.

Notions: A,B,C: One 20" (51cm) zipper (cut to fit) for Misses' and 22" (56cm) zipper for Women's, one pkg. of 1/2" (1.3cm) single fold bias tape.

Sizes	10	12	14	16	18	20W	22W	24W	26W	28W
European	36	38	40	42	44	46	48	50	52	54

BODY MEASUREMENTS: Select pattern size based on body measurements

Bust	32½	34	36	38	40	42	44	46	48	50	Ins.
Waist	25	26½	28	30	32	35	37	39	41½	44	"
Hip-9" below waist	34½	36	38	40	42	44	46	48	50	52	"
Back-neck to waist	16	16½	16½	16¾	17	17¼	17¾	17½	17¾	17¾	"

Interfacing A,B,C 20" - 1 yd.

Romper A	45"*	2½	2¼	2¼	2½	2½	2½	2¾	2¾	2¾	Yds.
	60"*	1¾	1¾	1¾	1¾	2	2	2½	2½	2¼	"
Jumpsuit B	45"*	3¾	3¾	4	4	4¼	4¼	4¾	4¾	4¾	Yds.
	60"*	3¾	3¾	3¾	3¾	3¾	3¾	3¾	3½	3¾	"
Jumpsuit C	45"*	1¾	1¾	1¾	1¾	2	2	2	2	2	Yds.
	60"*	1¾	1¾	1¾	1¾	1¾	1¾	1¾	1¾	1¾	"
Contrast 1 (Middle Front and Back)	45,60"*										
		1¾	1¾	1¾	1¾	1¾	1¾	1¾	1¾	1¾	Yds.
Contrast 2 (Side Front and Back)	45,60"*										
		1¾	1¾	1¾	1¾	1¾	1¾	1¾	1¾	1¾	Yds.

FINISHED GARMENT MEASUREMENTS (Includes Design and Wearing Ease): NOTE: Please refer to the sewing instructions for FINISHED GARMENT MEASUREMENTS.

*withnap **without nap

Moins Facile

BARBOTEUSE ET COMBINAISONS POUR JEUNES FEMMES ET FEMMES

Tissus Conseillés: Cotonnades, Denim, Toile de lin, Twill. **Entoilage:** Thermocollant léger.

Mercié: A,B,C: 1 fermeture à glissière de 51cm (coupée pour ajuster) pour jeunes femmes et fermeture à glissière de 56cm (coupée pour ajuster) pour femmes, 1 paquet de ruban de biais simple de 1.3cm.

Tailles	10	12	14	16	18	20W	22W	24W	26W	28W
Françaises	38	40	42	44	46	48	50	52	54	56
Européen	36	38	40	42	44	46	48	50	52	54

MESURES DU CORPS: Choisissez la taille du patron basée sur les mesures du corps

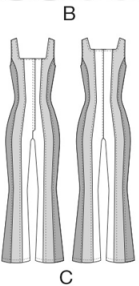
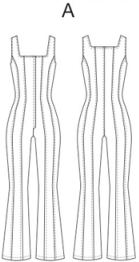
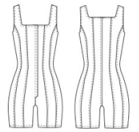
Poitrine	84	87	92	97	102	107	112	117	122	127	cm
Taille	64	67	71	76	81	89	94	99	105	112	"
Hanches (23cm au-dessous de la taille)											
	88	92	97	102	107	112	117	122	127	132	cm
Dos du cou à la taille	40.5	41.5	42	42.5	43	44	44	44.5	45	45	"

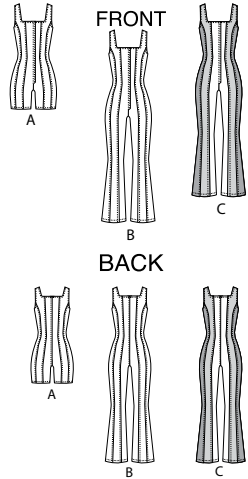
Entoilage A,B,C 51cm - 0.9m

Barboteuse A	115cm*	1.8	2.1	2.1	2.2	2.3	2.4	2.4	2.5	2.5	2.6	m
	150cm*	1.7	1.7	1.7	1.7	1.7	1.8	1.8	1.8	1.9	2.1	"
Combinaison B	115cm*	3.5	3.5	3.5	3.7	3.7	3.9	3.9	4.0	4.0	4.1	m
	150cm*	2.9	2.9	3.0	3.0	3.0	3.0	3.0	3.1	3.2	3.3	"
Combinaison C	115cm*	1.6	1.7	1.7	1.7	1.7	1.8	1.8	1.8	1.8	1.8	m
	150cm*	1.5	1.5	1.6	1.6	1.6	1.6	1.6	1.6	1.6	1.7	"
Contraste 1 (Milieu devant et dos)	115cm, 150cm*											
		1.6	1.7	1.7	1.7	1.7	1.7	1.7	1.7	1.7	1.7	m
Contraste 2 (Côté devant et dos)	115cm, 150cm*											
		1.5	1.5	1.5	1.5	1.5	1.5	1.5	1.5	1.5	1.5	m

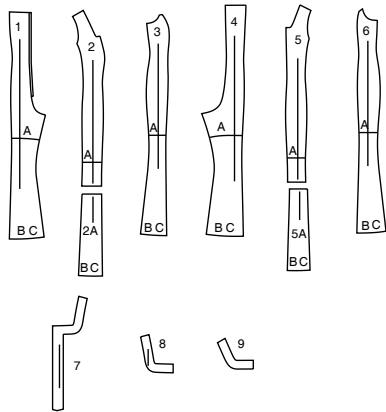
MESURES DES VÊTEMENTS FINI (Motif et aisance de port compris): NOTE: S'il vous plaît, reportez-vous aux instructions de couture pour les MESURES DES VÊTEMENTS FINI.

*avec sens **sans sens





9 PATTERN PIECES

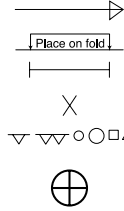


- 1 FRONT - A,B,C
- 2 MIDDLE FRONT - A,B,C
- 2A EXTENSION- B,C
- 3 SIDE FRONT - A,B,C
- 4 BACK - A,B,C
- 5 MIDDLE BACK - A,B,C
- 5A EXTENSION- B,C
- 6 SIDE BACK - A,B,C
- 7 RIGHT FRONT FACING - A,B,C
- 8 LEFT FRONT FACING - A,B,C
- 9 BACK FACING - A,B,C

Sizes	10	12	14	16	18	20W	22W	24W	26W	28W
European	36	38	40	42	44	46	48	50	52	54

FINISHED GARMENT MEASUREMENTS (Includes Design and Wearing Ease)										
A,B,C Bust	35	36 1/2	38 1/2	40 1/2	42 1/2	44 1/2	46 1/2	48 1/2	50 1/2	52 1/2
A,B,C Waist	27	28 1/2	30 1/2	32 1/2	34 1/2	37	39	41	43	45
A,B,C Hip	37	38 1/2	40 1/2	42 1/2	44 1/2	46 1/2	48 1/2	50 1/2	52 1/2	54 1/2
Width, each leg										
Romper A	19	20 1/2	21 1/2	23	24 1/2	25 1/2	26 1/2	27 1/2	29	30 1/2
Jumpsuit B,C	26	26 1/2	27	27 1/2	28	34	34 1/2	35	35 1/2	36
Finished back length from base of neck										
Romper A	33	33 1/2	34	34 1/2	35	35 1/2	36	36 1/2	37	37 1/2
Jumpsuit B,C	57	57 1/2	58	58 1/2	59	59 1/2	60	60 1/2	61	61 1/2

PATTERN MARKINGS



GRAINLINE: Place on straight grain of fabric, parallel to selvage or fold.
FOLDLINE: Place line on fold of fabric.
BUTTONHOLE MARKING: Indicates exact length and placement of buttonholes.
BUTTON MARKING: Indicates button placement.
NOTCHES AND SYMBOLS: For matching seams and construction details.
 Indicates the Bustline, Waistline, Hip and/or Biceps. Measurements refer to circumference of Finished Garment (Body Measurement + Wearing Ease + Design Ease). Adjust pattern if necessary. The measurement excludes pleats, tucks, darts and seam allowances.
SEAM ALLOWANCE: 5/8" (1.5cm) included unless otherwise indicated, but not printed on tissue.

ADJUST IF NECESSARY

Lengthen or Shorten at adjustment lines (==) or where indicated on pattern. If substantial length is added, you may need to purchase additional fabric.
TO SHORTEN: Crease along adjustment line. Make a fold half the amount needed. Tape in place.
TO LENGTHEN: Slash between adjustment lines. Spread amount as needed, keeping edges parallel. Tape over paper.
 When Alteration lines are not on tissue, lengthen or shorten at lower edge.

CUTTING AND MARKING

SHRINK FABRIC if not labeled pre-shrunk. Press.
CIRCLE LAYOUT for View, Size, Fabric Width.
 Use **WITH NAP** layout for fabrics with one-way designs, nap, pile or surface shading. Because most knits have surface shading, a with nap layout is used.
 For **DOUBLE THICKNESS (WITH FOLD)** - fold fabric with right sides together.
*** DOUBLE THICKNESS (WITHOUT FOLD)** - For fabrics with nap, fold fabric crosswise, right sides together. Mark as shown. Cut along crosswise fold of fabric (A). Turn upper layer 180° so arrows go in same direction and place over lower layer, right sides together (B).
 For **SINGLE THICKNESS** - place fabric right side up. (For Fur Pile fabrics, place pile side down.)

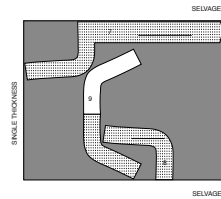
★ Cut other pieces first, allowing enough fabric to cut this piece. Open fabric. For "Cut 1" pieces, cut piece once on single layer of fabric with piece face up on right side of fabric.
 Pattern may have cutting lines for several sizes. Before **CUTTING** place all pieces on fabric according to layout. Pin. (Layouts show approximate position of pattern pieces; position may vary according to your pattern size.) Cut **ACCURATELY**, cutting notches outward.
 Before removing pattern, **TRANSFER MARKINGS** and lines of construction to Wrong Side of fabric, using the Pin and Chalk Pencil method or Tracing Paper and Dressmaker Wheel. Markings needed on right side of fabric should be thread traced.
NOTE: Broken-line boxes (a|b|c) in layouts represent pieces cut by measurements provided.

CUTTING LAYOUTS

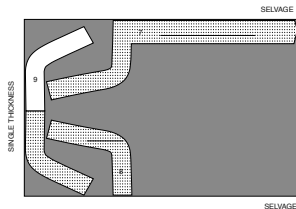
RIGHT SIDE OF PATTERN	WRONG SIDE OF PATTERN	RIGHT SIDE OF FABRIC	WRONG SIDE OF FABRIC
-----------------------	-----------------------	----------------------	----------------------

INTERFACING A,B,C
USE PIECES 7 8 9

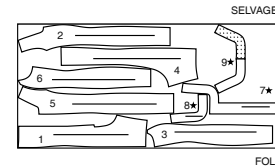
20" (51CM)
SIZES 10 12 14 16 18



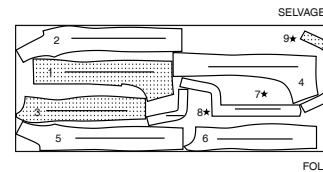
20" (51CM)
SIZES 20W 22W 24W 26W 28W



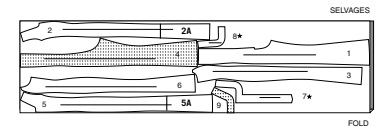
60" (150CM)
WITH NAP
SIZES 10 12 14 16 18



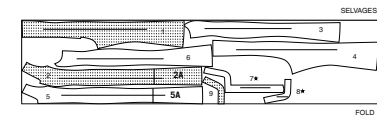
60" (150CM)
WITH NAP
SIZES 20W 22W 24W 26W 28W



60" (150CM)
WITH NAP
SIZES 10 12 14 16 18



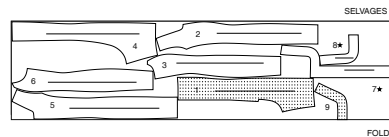
60" (150CM)
WITH NAP
SIZES 20W 22W 24W 26W 28W



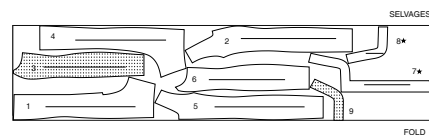
ROMPER A

USE PIECES 1 2 3 4 5 6 7 8 9

45" (115CM)
WITH NAP
SIZES 10 12 14 16 18



45" (115CM)
WITH NAP
SIZES 20W 22W 24W 26W 28W

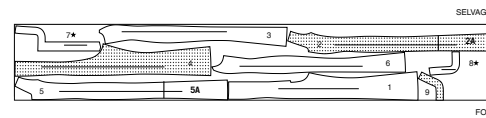


B,C NOTE: BEFORE CUTTING FABRIC JOIN PIECE IN PARENTHESIS TO CORRESPONDING PIECE FOLLOWING INSTRUCTIONS ON TISSUE PATTERN.

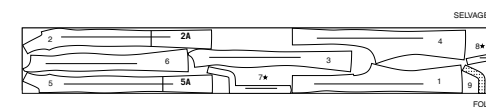
JUMPSUIT B

USE PIECES 1 2 (2A) 3 4 5 (5A) 6 7 8 9

45" (115CM)
WITH NAP
SIZES 10 12 14 16 18



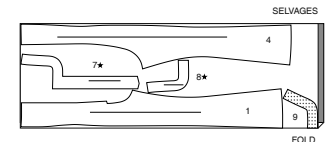
45" (115CM)
WITH NAP
SIZES 20W 22W 24W 26W 28W



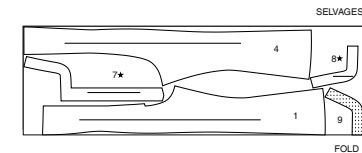
JUMPSUIT C

USE PIECES 1 4 7 8 9

45" (115CM)
WITH NAP
SIZES 10 12 14 16 18

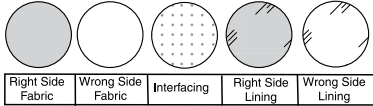


45" (115CM)
WITH NAP
SIZES 20W 22W 24W 26W 28W



SEWING INFORMATION

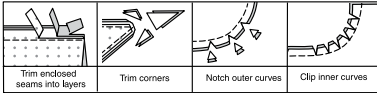
FABRIC KEY



Right Side Fabric Wrong Side Fabric Interfacing Right Side Lining Wrong Side Lining

SEAM ALLOWANCES

Use 5/8" (1.5cm) seam allowances unless otherwise indicated.



Trim enclosed seams into layers Trim corners Notch outer curves Clip inner curves

PIN AND FIT

Pin or baste seams, **RIGHT SIDE TOGETHER**, matching notches. Fit garment before stitching major seams.

PRESS

Press seam allowances flat; then open unless otherwise stated. Clip where necessary so they lie flat.

GLOSSARY

Sewing methods in **BOLD TYPE** have Sewing Tutorial Video available. Scan QR CODE to watch videos:

FINISH - Stitch 1/4" (6mm) from raw edge and finish with one of the following: (1) Pink OR (2) Overcast OR (3) Turn in along stitching and stitch close to fold OR (4) Overlock. **OPTIONAL FOR HEMS:** Apply Seam Binding.

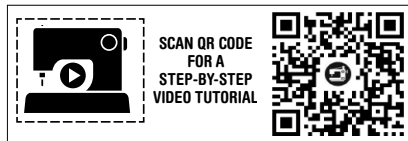
NARROW HEM - Turn in hem; press, easing in fullness if necessary. Open out hem. Turn in again so raw edge is along crease; press. Turn in along crease; stitch.

SLIPSTITCH - Slide needle through a folded edge, then pick up a thread of underneath fabric.

STAYSTITCH - Stitch 1/2" (1.3mm) from seamline in seam allowance (usually 1/2" (13mm) from raw edge).

TOPSTITCH - On outside, stitch 1/4" (6mm) from edge, seam or previous stitching, using presser foot as guide, or stitch where indicated in instructions.

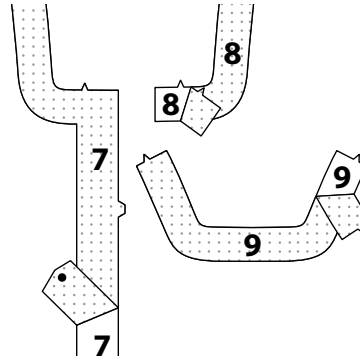
UNDERSTITCH - Open out facing or underside of garment; stitch to seam allowance close to seam.



ROMPER A, JUMPSUIT B, C

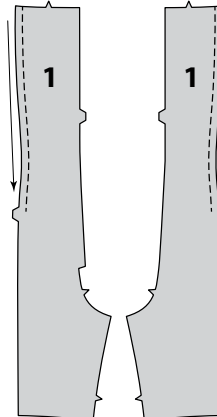
INTERFACING

1. Pin **INTERFACING** to wrong side of each matching **FABRIC** section. Fuse, following manufacturer's instructions.

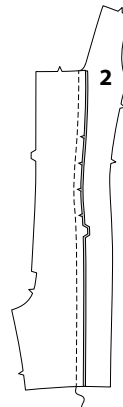


FRONT AND BACK

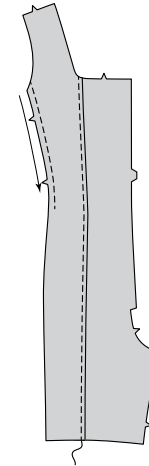
2. **STAYSTITCH** side edges of **FRONT** (1) sections, in direction of arrows.



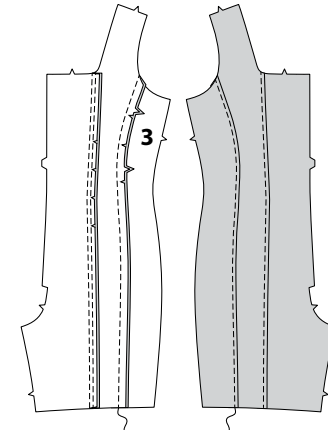
3. With **RIGHT** sides together, pin **MIDDLE FRONT** (2) to side edge of front sections, matching notches, clipping to stay-stitching if necessary. Stitch. Press seam toward side.



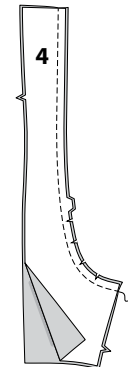
4. On **OUTSIDE**, **TOPSTITCH** middle front in direction of seam. **STAYSTITCH** side edges of middle front, in direction of arrows.



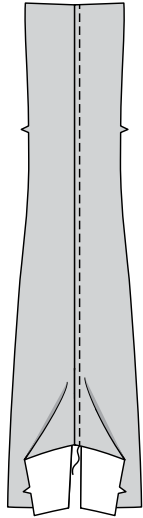
5. With **RIGHT** sides together, pin **SIDE FRONT** (3) sections to side edges of middle front, matching notches, clipping to stay-stitching if necessary. Stitch. Press seam toward side. On **OUTSIDE**, **TOPSTITCH** side front in direction of seam.



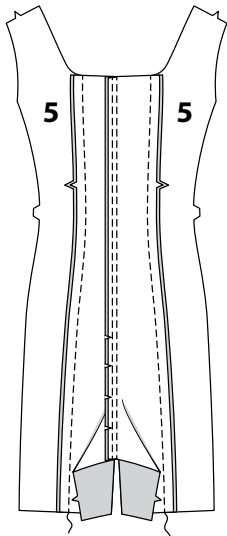
6. Stitch center back seam of **BACK** (4) sections. Clip seam along curve. Press seam toward **RIGHT** back.



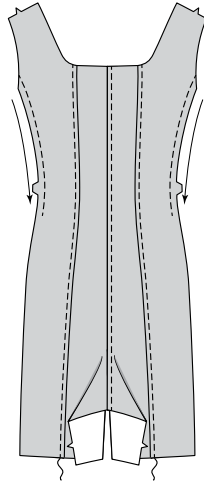
7. On OUTSIDE, TOPSTITCH RIGHT back in direction of seam.



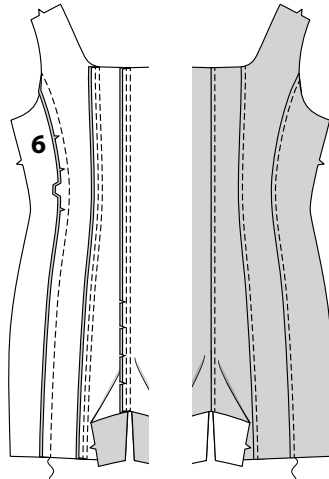
8. With RIGHT sides together, stitch MIDDLE BACK (5) sections to each side of back, matching notches. Press seams toward side.



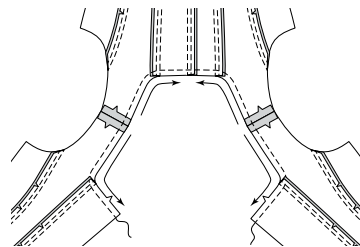
9. On OUTSIDE, TOPSTITCH middle back in direction of seam. STAYSTITCH side edges of middle back in direction of arrows.



10. With RIGHT sides together, pin SIDE BACK (6) sections to side edges of middle back, matching notches, clipping to stay-stitching if necessary. Stitch. Press seam toward side. On OUTSIDE, TOPSTITCH side back in direction of seam.

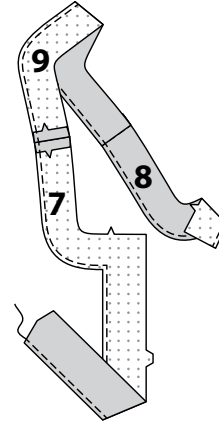


11. Stitch front to back at shoulder seams. STAYSTITCH neck edge of garment in direction of arrows.

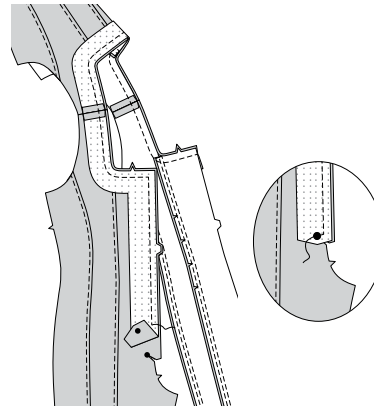


FRONT AND BACK FACING

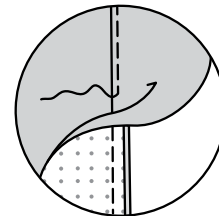
12. With RIGHT sides together, stitch RIGHT FRONT FACING (7) and LEFT FRONT FACING (8) to BACK FACING (9) at shoulder seams. FINISH inner edge of facing.



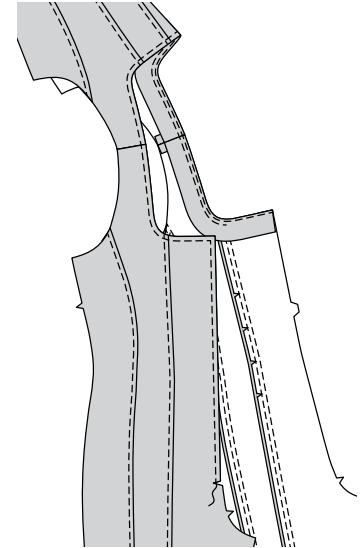
13. With RIGHT sides together, pin facing to front and upper edges of garment having raw edges even, matching notches and shoulder seams. Stitch, ending at large dot at center front. Trim seam and corners. Clip RIGHT front seam allowance to stitching at large dot.



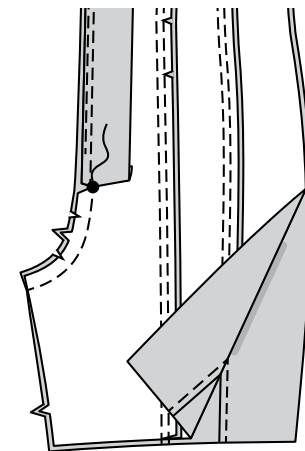
14. UNDERSTITCH facing, as far as possible.



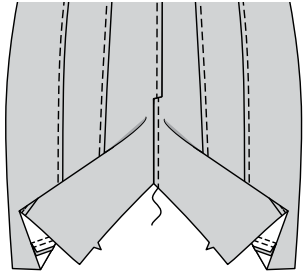
15. Turn facing to INSIDE, turning under 5/8" (7.5cm) on lower edge of right front facing. Press. Beginning 3" (7.5cm) from left front edge, TOPSTITCH neck and RIGHT front, as shown.



16. Pin front sections together along center front seam. Stitch center front seam, ending at large dot, keeping finished edge of overlap free. Back-stitch to reinforce. Clip seam allowance to stitching along curve. Press seam toward LEFT front.

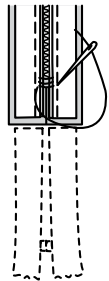


17. On OUTSIDE, TOPSTITCH center front in direction of seam.

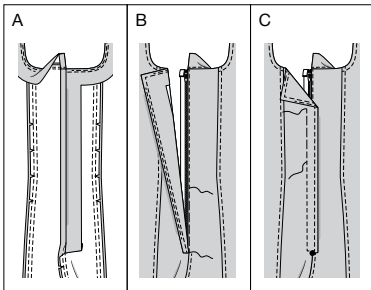


FRONT ZIPPER

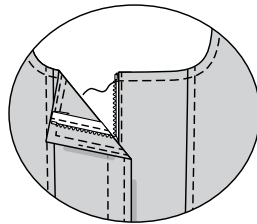
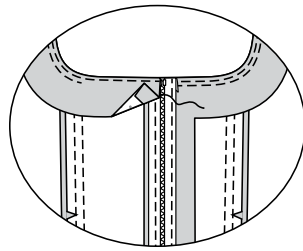
18. **NOTE:** It may be necessary to shorten zipper. To make new zipper stop, place zipper along opening edge with top stop 1/8" below finished edge. Mark placement of new zipper stop at lower large circle. Whipstitch across teeth at marking. Cut zipper 3/4"(2cm) below the new stop.



19. (A) Open out left front facing. Turn in 1/2"(13mm) on LEFT FRONT opening edge; press.
 (B) Place closed zipper (face up) under LEFT front edge, placing bottom stop at large dot and top stop 1/8"(3mm) below finished edge, having pressed edge close to teeth.
 Turn under OR trim upper edges of zipper tape even with finished edge if necessary.
 Using a zipper foot, stitch close to pressed edge, keeping LEFT front facing free.
 (C) Lap RIGHT front opening edge over LEFT, matching centers. Baste in place. Stitch, pivoting 1/4"(6mm) above large dot, connecting with previous top-stitching, as shown.

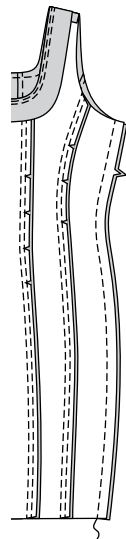


20. Turn LEFT front facing down, clearing zipper teeth. SLIPSTITCH facing to zipper tape. TOPSTITCH remainder of LEFT front connecting with previous stitching.

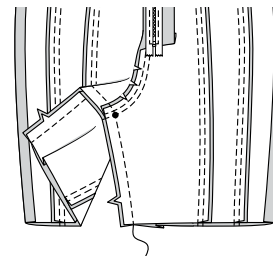


SEAMS AND ARMHOLE FINISHING

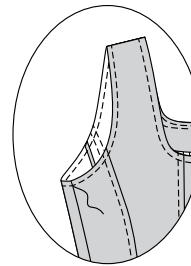
21. With RIGHT sides together, stitch front to back at side seams.



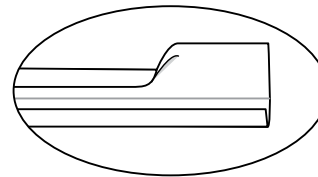
22. Pin front to back at inner leg seams. In one continuous stitching, stitch entire inner leg edges, matching small dots. Trim seam.



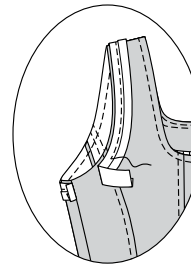
23. STAYSTITCH armhole edge.



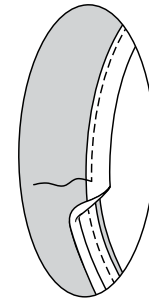
24. Open out one folded edge of bias tape; press out crease and preshape tape to match curve of armhole by pressing lightly.



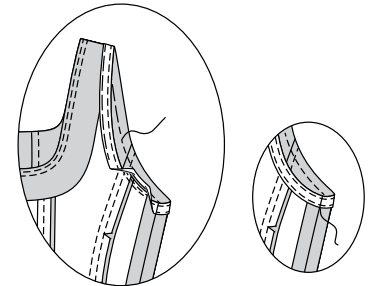
25. Pin bias tape to armhole edge, placing crease along seamline, turning in ends to meet at side seam, as shown. Stitch along crease, keeping facing free. Trim garment seam allowance even with bias tape.



26. UNDERSTITCH bias tape.

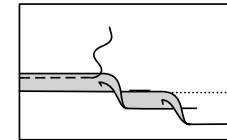


27. Turn bias tape to inside along seam. Press. Baste in place. SLIPSTITCH ends. On OUTSIDE, stitch close to basted edge.

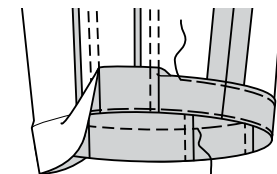


FINISHING

28. **VIEW A- NARROW HEM** lower edge of romper.



29. **VIEW B, C-** Turn up hem. Baste close to fold. Turn in 1/4"(6mm) on raw edge. Baste hem in place close to upper edge. Press. TOPSTITCH hem along upper basting.





Congrats!

You've completed your sewing adventure

**SHARE
YOUR** LOOK



Post your pattern and tag us
[@simplicity_creative_group](#) and [#simplicitypatterns](#)
for a chance to be featured on our social media.

Look for more PDF patterns at [simplicity.com](https://www.simplicity.com)

Have a question or need help with your sewing project call us at
1-800-782-0323

McCall's
by **design**_{group}

McCall's ©2024 a division of IG Design Group Americas Inc. • Atlanta, GA 30342 USA www.thedesigngroup.com • All Rights Reserved. www.mccall.com • Made in the U.S.A. Fabriqué aux États-Unis.

To be used for individual private home use only and not for commercial or manufacturing purposes. • A usage privé seulement et non à des fins commerciales ou de production en série. • Para uso privado solamente, no se puede utilizar con propósitos de comercialización o de producción en serie.