

McCall's

M8513



Designed and printed in USA

Average

WOMEN'S KNIT JUMPSUITS AND DRESS

Suggested Fabrics: Stretch Knits only such as Cotton Knits, Interlock, Jerseys. See Stretch Gauge.

Interfacing: Fusible Knit.

Notions: A,B,C: 1½ yds. (1.5m) of 1" (2.5cm) elastic, 1 yd. (0.9m) of ¾" (6mm) elastic.

Sizes	20W	22W	24W	26W	28W	30W	32W	34W	36W	38W	
European	46	48	50	52	54	56	58	60	62	64	

BODY MEASUREMENTS: Select pattern size based on body measurements

Bust	42	44	46	48	50	52	54	56	58	60	Ins.
Waist	35	37	39	41½	44	46½	49	51½	53	54½	"
Hip-9" below waist	44	46	48	50	52	54	56	58	60	62	"
Back-neck to waist	17¼	17¾	17½	17¾	17¾	17¾	18	18½	18¼	18¾	"

Interfacing A,B,C	20"	¾	¾	¾	¾	¾	1	1	1	1	Yd.
Jumpsuit A	60"	6¾	6¾	6¾	6¾	6¾	7	7	7¾	7¾	Yds.
Jumpsuit B	60"	2½	2½	2½	2½	2½	2½	2½	2¾	2¾	Yds.
Contrast 1 (Middle Front and Back)	60"	1¾	1¾	1¾	1¾	1¾	1¾	1¾	1¾	1¾	Yds.
Contrast 2 (Middle Side Front and Back)	60"	1¾	1¾	1¾	1¾	1¾	1¾	1¾	1¾	1¾	Yds.
Contrast 3 (Side Front and Back)	60"	1½	1½	1¾	1¾	1¾	1¾	1¾	1¾	1¾	Yds.
Dress C	60"	3¾	3¾	3¾	3¾	3¾	3¾	3¾	3¾	3¾	Yds.
Contrast (Middle Front and Back, Side Front and Back)	60"	3	3	3	3	3¾	3¾	3¾	3¾	3¾	Yds.

FINISHED GARMENT MEASUREMENTS (Includes Design and Wearing Ease)

A,B,C Bust	42	44	46	48	50	52	54	56	58	60	Ins.
A,B,C Waist	34	36	38	40	42	44	46	48	50	52	"
Width, each leg											
Jumpsuit A,B	91¾	93	94¼	95½	96¾	98	98¼	99½	100¾	103	Ins.
Finished back length from base of neck											
Jumpsuit A,B,C	58¼	58½	58¾	59	59¼	59½	59¾	60	60¼	60½	Ins.

*with nap **without nap

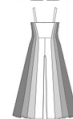
Moins Facile

COMBINAISONS ET ROBE EN TRICOT POUR FEMMES												
Tissus Conseillés: Tricot extensibles seulement tels que Tricot de coton, Interlock, Jerseys.												
Reportez-vous au taux d'élasticité. Entoilage: Tricot thermocollant.												
Mercerie: A,B,C: 1.5m d'élastique de 2.5cm, 0.9m d'élastique de 6mm.												
Tailles	20W	22W	24W	26W	28W	30W	32W	34W	36W	38W		
Françaises	48 <td>50<td>52<td>54<td>56<td>58<td>60<td>62<td>64<td>66</td><td colspan="2"></td></td></td></td></td></td></td></td></td>	50 <td>52<td>54<td>56<td>58<td>60<td>62<td>64<td>66</td><td colspan="2"></td></td></td></td></td></td></td></td>	52 <td>54<td>56<td>58<td>60<td>62<td>64<td>66</td><td colspan="2"></td></td></td></td></td></td></td>	54 <td>56<td>58<td>60<td>62<td>64<td>66</td><td colspan="2"></td></td></td></td></td></td>	56 <td>58<td>60<td>62<td>64<td>66</td><td colspan="2"></td></td></td></td></td>	58 <td>60<td>62<td>64<td>66</td><td colspan="2"></td></td></td></td>	60 <td>62<td>64<td>66</td><td colspan="2"></td></td></td>	62 <td>64<td>66</td><td colspan="2"></td></td>	64 <td>66</td> <td colspan="2"></td>	66		
Européen	46 <td>48<td>50<td>52<td>54<td>56<td>58<td>60<td>62<td>64</td><td colspan="2"></td></td></td></td></td></td></td></td></td>	48 <td>50<td>52<td>54<td>56<td>58<td>60<td>62<td>64</td><td colspan="2"></td></td></td></td></td></td></td></td>	50 <td>52<td>54<td>56<td>58<td>60<td>62<td>64</td><td colspan="2"></td></td></td></td></td></td></td>	52 <td>54<td>56<td>58<td>60<td>62<td>64</td><td colspan="2"></td></td></td></td></td></td>	54 <td>56<td>58<td>60<td>62<td>64</td><td colspan="2"></td></td></td></td></td>	56 <td>58<td>60<td>62<td>64</td><td colspan="2"></td></td></td></td>	58 <td>60<td>62<td>64</td><td colspan="2"></td></td></td>	60 <td>62<td>64</td><td colspan="2"></td></td>	62 <td>64</td> <td colspan="2"></td>	64		
MESURES DU CORPS: Choisissez la taille du patron basée sur les mesures du corps												
Poitrine	107	112	117	122	127	132	137	142	147	152	cm	
Taille	89	94	99	105	112	118	124	130	134	138	"	
Hanches (23cm au-dessous de la taille)	112	117	122	127	132	137	142	147	152	157	cm	
Dos du cou à la taille	44	44	44.5	45	45	45.5	46	46	46.5	47	"	
Entoilage A,B,C	51cm	0.7	0.8	0.8	0.8	0.8	0.8	0.9	0.9	0.9	0.9	m
Combinaison A	150cm*	6.2	6.2	6.3	6.3	6.3	6.4	6.4	6.4	6.5	6.5	m
Combinaison B	150cm*	2.3	2.3	2.3	2.3	2.3	2.3	2.4	2.4	2.5	2.5	m
Contrast 1 (Milieu devant et dos)	150cm*	1.5	1.5	1.5	1.5	1.5	1.5	1.5	1.5	1.5	1.6	m
Contrast 2 (Milieu côté devant et dos)	150cm*	1.4	1.5	1.5	1.5	1.5	1.5	1.5	1.5	1.5	1.5	m
Contrast 3 (Côté devant et dos)	150cm*	1.4	1.4	1.4	1.5	1.5	1.5	1.5	1.5	1.6	1.7	m
Robe C	150cm*	3.1	3.2	3.2	3.2	3.2	3.3	3.3	3.3	3.3	3.4	m
Contrast (Milieu devant et dos, Côté devant et dos)	150cm*	2.7	2.7	2.7	2.7	2.9	2.9	2.9	2.9	2.9	2.9	m
MESURES DES VÊTEMENTS FINI (Motif et aisance de port compris)												
A,B,C Poitrine	107	112	117	122	127	132	137	142	147	152	cm	
A,B,C Taille	86	91	97	102	107	112	117	122	127	132	"	
Largeur, chaque jambe												
Combinaison A,B	233	236	239	243	246	249	250	253	256	262	cm	
Longueur finie – dos, votre nuque à l'ourlet												
Combinaison A,B,C	148	149	149	150	150	151	152	152	153	154	cm	

*avec sens **sans sens



A



B



C

Use the 1 inch (2.54cm) box to ensure you are using rule at 100%

Utilisez la boîte de 2.54 cm pour vous assurer d'utiliser la règle à 100%.

Utilizar un cuadrado de 2.54 cm para asegurarse de estar usando la regla al 100%.

4" of crosswise folded fabric must STRETCH from here
10 cm de tricot plié sur le travers et sur le droit-fil doivent s'étirer de cette limite à celle là
10 cm de tejido de punto doblado (a lo largo y luego al través) deben estirarse desde acá

To Here 50%
jusqu'ici 50%
hasta acá 50%

When using the Pick-A-Knit® rule to measure your fabrics stretch capacity, rule must be viewed or printed at 100%.
Quand vous utilisez le taux d'élasticité pour mesurer la capacité d'élasticité des tissus, le taux doit être visible ou imprimé à 100%.
Al utilizar el calibre de elasticidad para medir la capacidad de elasticidad de las telas, el calibre debe estar visible o impreso al 100%.

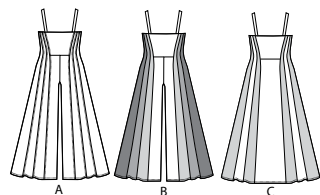
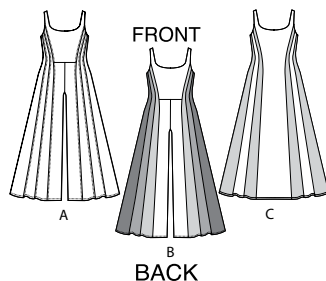
M8513

Page 1 of 4

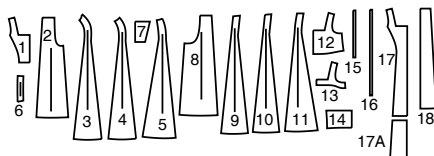
McCall's®

English

1-800-782-0323

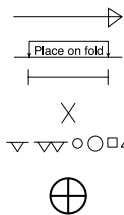


18 PATTERN PIECES



- 1 Upper Front-A,B
- 2 Lower Front-A,B
- 3 Middle Front-A,B,C
- 4 Middle Side Front-A,B,C
- 5 Side Front-A,B,C
- 6 Back Strap-A,B,C
- 7 Upper Back-A,B,C
- 8 Lower Back-A,B
- 9 Middle Back-A,B,C
- 10 Middle Side Back-A,B,C
- 11 Side Back-A,B,C
- 12 Front Facing-A,B,C
- 13 Front Interfacing-A,B,C
- 14 Back Facing-A,B,C
- 15 Elastic Guide for Back-A,B,C
- 16 Guide for Elastic-A,B,C
- 17(17A) Front-C
- 18 Lower Back-C

PATTERN MARKINGS



GRAINLINE: Place on straight grain of fabric, parallel to selvage or fold.

FOLDLINE: Place line on fold of fabric.

BUTTONHOLE MARKING: Indicates exact length and placement of buttonholes.

BUTTON MARKING: Indicates button placement.

NOTCHES AND SYMBOLS: For matching seams and construction details.

Indicates the Bustline, Waistline, Hip and/or Biceps. Measurements refer to circumference of Finished Garment (Body Measurement + Wearing Ease + Design Ease). Adjust pattern if necessary. The measurement excludes pleats, tucks, darts and seam allowances.

SEAM ALLOWANCE: 5/8" (1.5cm) included unless otherwise indicated, but not printed on tissue.

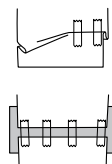
ADJUST IF NECESSARY

Lengthen or Shorten at adjustment lines (==) or where indicated on pattern. If substantial length is added, you may need to purchase additional fabric.

TO SHORTEN: Crease along adjustment line. Make a fold half the amount needed. Tape in place.

TO LENGTHEN: Slash between adjustment lines. Spread amount as needed, keeping edges parallel. Tape over paper.

When Alteration lines are not on tissue, lengthen or shorten at lower edge.



CUTTING AND MARKING

SHRINK FABRIC if not labeled pre-shrunk. Press.

CIRCLE LAYOUT for View, Size, Fabric Width.

Use **WITH NAP** layout for fabrics with one-way designs, nap, pile or surface shading. Because most knits have surface shading, a with nap layout is used.

For **DOUBLE THICKNESS (WITH FOLD)** - fold fabric with right sides together.

*** DOUBLE THICKNESS (WITHOUT FOLD)** - For fabrics with nap, fold fabric crosswise, right sides together. Mark as shown. Cut along crosswise fold of fabric (A). Turn upper layer 180° so arrows go in same direction and place over lower layer, right sides together (B).

For **SINGLE THICKNESS** - place fabric right side up. (For Fur Pile fabrics, place pile side down.)

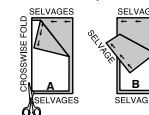
★ Cut other pieces first, allowing enough fabric to cut this piece. Open fabric. For "Cut 1" pieces, cut piece once on single layer of fabric with piece face up on right side of fabric.

Pattern may have cutting lines for several sizes. Select the proper cutting line or pattern pieces for your size.

Before **CUTTING** place all pieces on fabric according to layout. Pin. (Layouts show approximate position of pattern pieces; position may vary according to your pattern size.) Cut **ACCURATELY**, cutting notches outward.

Before removing pattern, **TRANSFER MARKINGS** and lines of construction to Wrong Side of fabric, using the Pin and Chalk Pencil method or Tracing Paper and Dressmaker Wheel. Markings needed on right side of fabric should be thread traced.

NOTE: Broken-line boxes (at b1 c1) in layouts represent pieces cut by measurements provided.

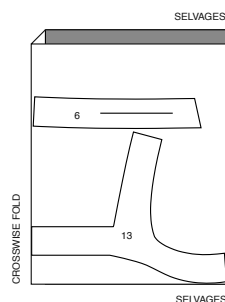


CUTTING LAYOUTS

RIGHT SIDE OF PATTERN	WRONG SIDE OF PATTERN	RIGHT SIDE OF FABRIC	WRONG SIDE OF FABRIC
-----------------------	-----------------------	----------------------	----------------------

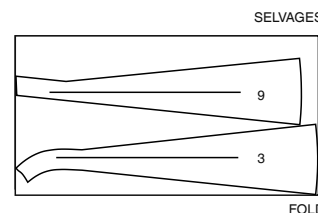
INTERFACING A,B,C

USE PIECES 6 13

20" (51CM)
ALL SIZES

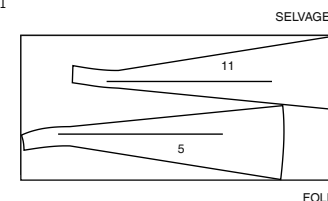
CONTRAST B 1

USE PIECES 3 9

60" (150CM)
WITH NAP
ALL SIZES

CONTRAST B 3

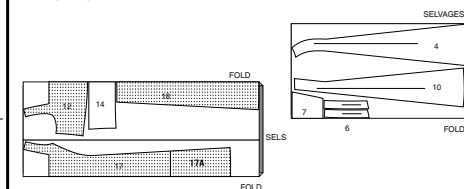
USE PIECES 5 11

60" (150CM)
WITH NAP
ALL SIZES

NOTE: BEFORE CUTTING FABRIC, JOIN PIECES IN PARENTHESIS TO CORRESPONDING PIECES FOLLOWING INSTRUCTIONS ON TISSUE PATTERN.

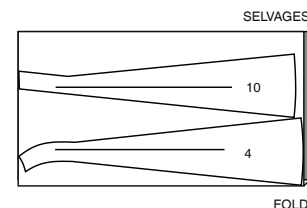
DRESS C

USE PIECES 4 6 7 10 12 14 17 (17A) 18

60" (150CM)
WITH NAP
ALL SIZES

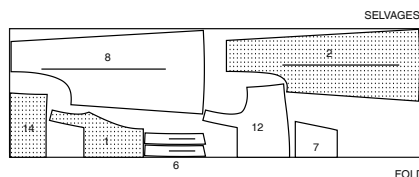
CONTRAST B 2

USE PIECES 4 10

60" (150CM)
WITH NAP
ALL SIZES

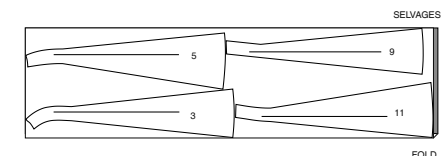
JUMPSUIT B

USE PIECES 1 2 6 7 8 12 14

60" (150CM)
WITH NAP
ALL SIZES

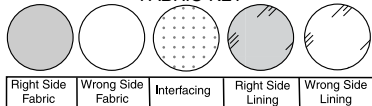
CONTRAST C

USE PIECES 3 5 9 11

60" (150CM)
WITH NAP
ALL SIZES

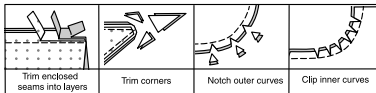
SEWING INFORMATION

FABRIC KEY



SEAM ALLOWANCES

Use 1/4" (6mm) seam allowances unless otherwise indicated.



PIN AND FIT

Pin or baste seams, **RIGHT SIDE TOGETHER**, matching notches. Fit garment before stitching major seams.

PRESS

Press seam allowances flat; then open unless otherwise stated. Clip where necessary so they lie flat.

GLOSSARY

Sewing methods in **BOLD TYPE** have Sewing Tutorial Video available. Scan QR CODE to watch videos:

EASESTITCH/GATHER - See **Gathering**: "sewing two row gathers" video.

NARROW HEM - See **Hems**: "sewing narrow hems" video.

REINFORCE - See **Machine Stitches**: "how to reinforce" video.

TOPSTITCH - See **Machine Stitches**: "how to topstitch" video.

TRIM - See **How to Sew**: Trim, Clip, and Layer Seams" video.

UNDERSTITCH - See **Machine Stitches**: "how to understitch" video.

SEWING TUTORIALS



Build your skills viewing short, easy-to-follow videos at simplicity.com/sewingtutorials

PATTERN PIECES WILL BE IDENTIFIED BY NUMBERS THE FIRST TIME THEY ARE USED.

STITCH 5/8" (1.5CM) SEAMS WITH RIGHT SIDES TOGETHER UNLESS OTHERWISE STATED.

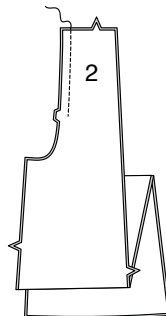
JUMPSUIT A, B OR DRESS C

NOTE: The first view mentioned will be illustrated unless otherwise indicated.

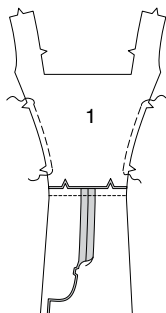
FRONT

VIEWS A, B:

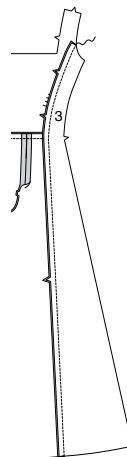
1. Pin LOWER FRONT (2) sections together at center front seam, matching double notches. Stitch seam above notches.



2. **EASESTITCH** side edges of UPPER FRONT (1) between notches. Stitch lower front to upper front at waist seam, matching centers. Press seam toward upper front.

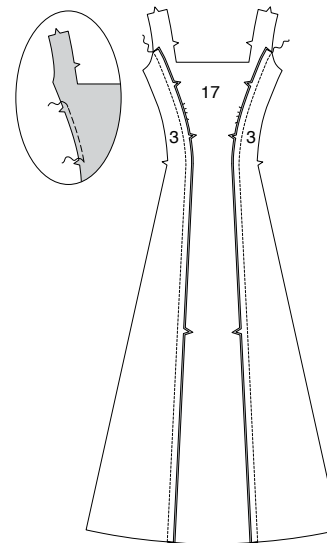


3. Pin MIDDLE FRONT (3) sections to front at sides, matching single notches. Adjust ease. Stitch. Press seam toward center front.



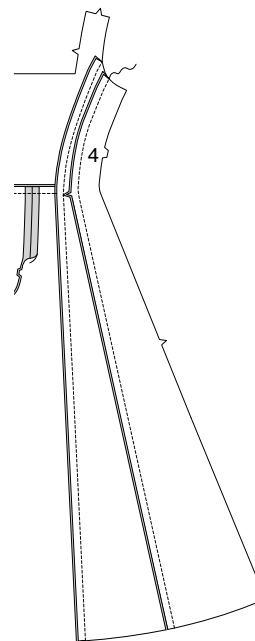
VIEW C:

4. **EASESTITCH** side edges of FRONT (17) between notches. Pin MIDDLE FRONT (3) sections to front at sides, matching single notches. Adjust ease to fit. Stitch. Press seam toward center front.

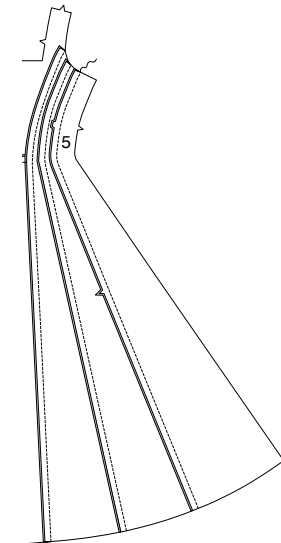


ALL VIEWS:

5. Pin MIDDLE SIDE FRONT (4) sections to middle fronts at sides, matching single notches. Stitch. Press seam toward center front.

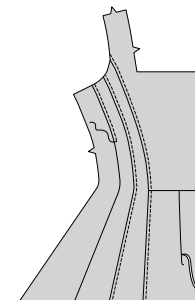


6. Pin SIDE FRONT (5) sections to middle side fronts at sides, matching double notches. Stitch. Press seam toward center front.



VIEW A:

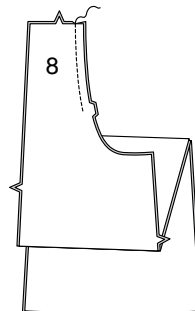
7. On outside, **TOPSTITCH** front, middle front, and middle side front 1/4" (6mm) from seams.



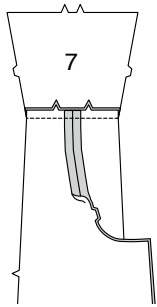
BACK

VIEWS A, B:

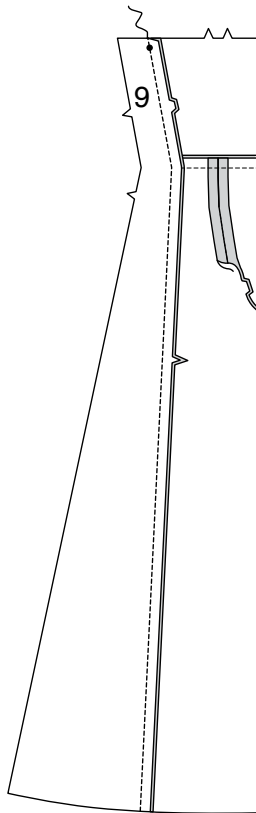
8. Pin LOWER BACK (8) sections together at center back seam, matching triple notches. Stitch seam above notches.



9. Stitch lower back to UPPER BACK (7) at waist seam, matching centers. Press seam toward upper back.

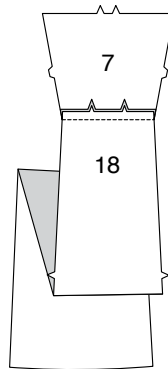


10. Pin MIDDLE BACK (9) sections to back at sides, matching small dots and notches. Stitch.
Press seam toward center back.

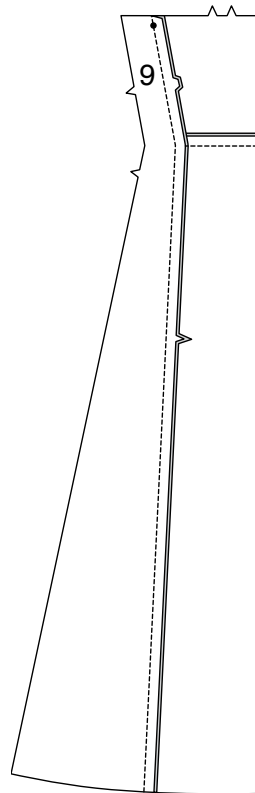


VIEW C:

11. Stitch UPPER BACK (7) to LOWER BACK (18) at waist seam, matching centers.
Press seam toward upper back.

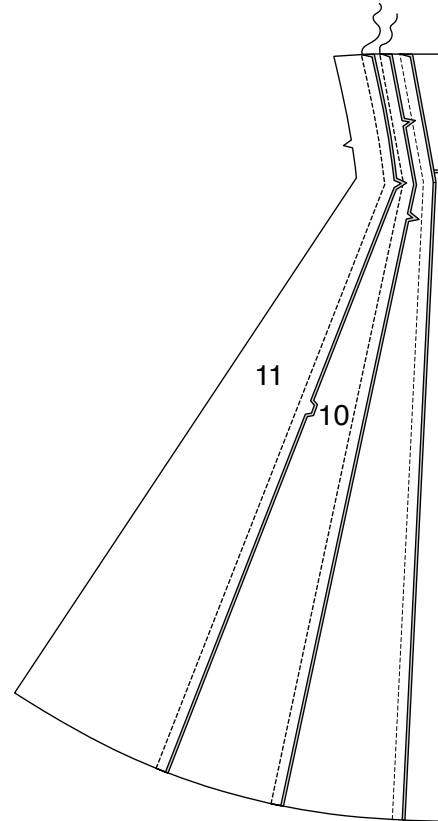


12. Pin MIDDLE BACK (9) sections to back at sides, matching small dots and notches. Stitch.
Press seams toward center back.



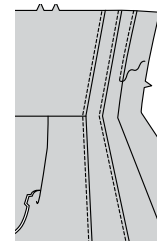
ALL VIEWS:

13. Pin MIDDLE SIDE BACK (10) sections to middle backs at sides, matching single notches. Stitch.
Pin SIDE BACK (11) sections to middle side backs at sides, matching single and double notches. Stitch.
Press seams toward center back.



VIEW A:

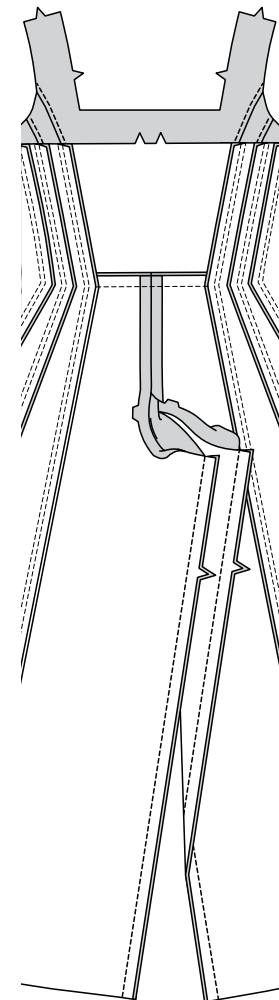
14. On outside, **TOPSTITCH** back, middle back, and middle side back 1/4" (6mm) from seams.



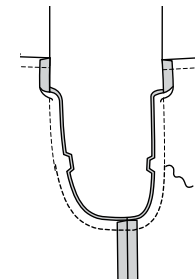
FRONT AND BACK SEAMS

VIEWS A, B:

15. Stitch front to back at inner leg seams.

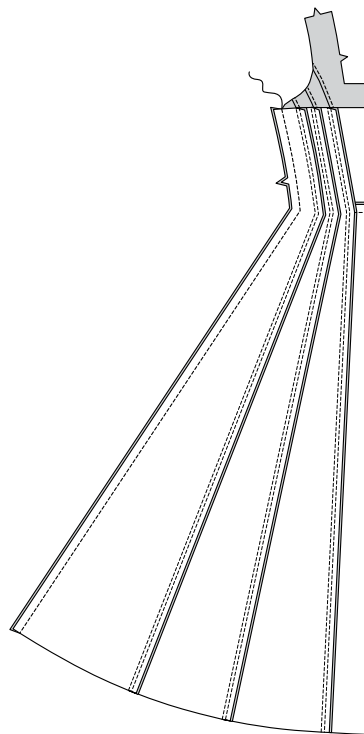


16. Pin remaining of center seam, matching inner leg seams.
Stitch, connecting to previous stitching.
REINFORCE seam between notches.



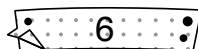
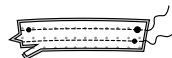
ALL VIEWS:

17. Stitch front to back at sides.



STRAPS

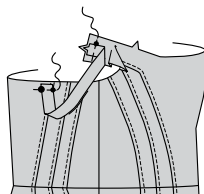
18. Apply interfacing to wrong side of BACK STRAP (6) sections, following manufacturer's directions.

19. For each strap, stitch one interfaced strap to one non-interfaced strap, leaving ends open. **TRIM** seam.

20. Turn strap; lightly press.



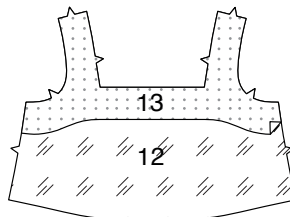
21. On outside, baste strap (interfaced side) to upper edges of garment, matching notches, small, and large dots, clearing seam allowance on front.



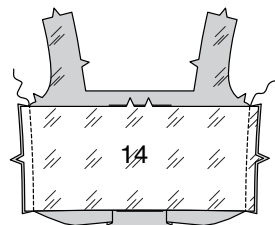
BRA

NOTE: The facing sections will be illustrated as lining and once joined at sides, will be referred to as the bra.

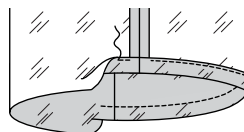
22. Apply FRONT INTERFACING (13) to wrong side of FRONT FACING (12), matching centers and having raw edges even.



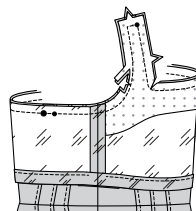
23. Stitch front facing to BACK FACING (14) at sides.



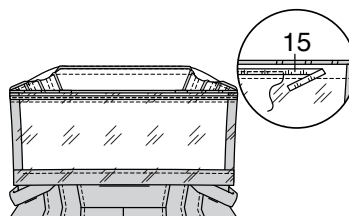
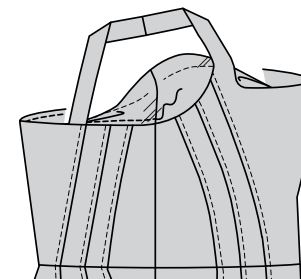
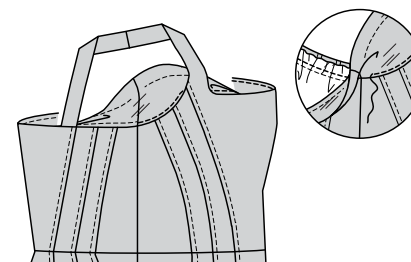
24. Turn lower edge of bra to inside along foldline; press. Stitch 1/4" (6mm) from raw edge, leaving an opening in back to insert elastic.



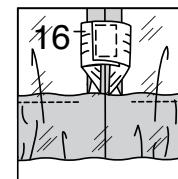
25. With right sides together and raw edges even, pin bra to upper edges of garment (over straps), matching centers, side seams, small and large dots. Stitch, pivoting at corners of front shoulders.

TRIM corners and front seam allowance only, tapering to nothing about 2" (5cm) away from side seam, as shown. (You need the full seam allowance on the back for the elastic application).

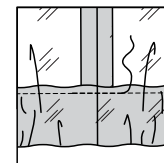
26. Cut one piece of 1/4" (6mm) elastic the length of ELASTIC GUIDE FOR BACK (15). Pin elastic to back seam allowance, having inner edge alongside seam stitching, matching centers, and side seams. Stitch along center of tape, gently stretching elastic as you stitch and keeping the rest of the garment out of the way.

TRIM remainder of front armhole seams.27. Separate back of bra from dress. Lightly press, pressing seam allowance toward bra. On right side, **TOPSTITCH** back of bra 1/4" (6mm) away from seam between side seams, stitching through bra and seam allowances, gently stretching elastic as you stitch. Be careful not to catch in garment as you stitch.28. Turn bra right side out, pulling out straps. Lightly press. **UNDERSTITCH** front armhole as far as possible, starting at side seam.

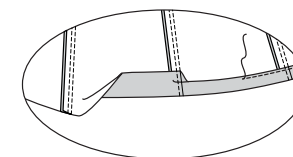
29. Cut one piece of 1" (2.5cm) elastic the length of GUIDE FOR ELASTIC (16). Insert elastic through opening in lower casing. Overlap ends and stitch securely together.



30. Stitch opening closed. If desired, stitch through all thicknesses of casing in the groove of each side seam to prevent it from twisting.



FINISHING

31. Make a 5/8" (1.5cm) **NARROW HEM** on lower edge of garment.



Congrats!

You've completed your sewing adventure

SHARE YOUR LOOK



Post your pattern and tag us
[@simplicity_creative_group](#) and [#simplicitypatterns](#)
for a chance to be featured on our social media.

Look for more PDF patterns at [simplicity.com](https://www.simplicity.com)

Have a question or need help with your sewing project call us at
1-800-782-0323

McCall's
by **design**_{group}

McCall's ©2024 a division of IG Design Group Americas Inc. • Atlanta, GA 30342 USA www.thedesigngroup.com • All Rights Reserved. www.mccall.com • Made in the U.S.A. Fabriqué aux États-Unis.

To be used for individual private home use only and not for commercial or manufacturing purposes. • A usage privé seulement et non à des fins commerciales ou de production en série. • Para uso privado solamente, no se puede utilizar con propósitos de comercialización o de producción en serie.