

**McCall's**

**M8511**



Designed and printed in USA

Average

**MISSES' SHORTS AND PANTS**

**Suggested Fabrics:** Challis, Cotton Blends, Denim, Linen. **Interfacing:** Lightweight Fusible.

**Notions:** A, B, C: One 7" (18cm) zipper (cut to fit), one 5/8" (1.5cm) button.

Sizes	4	6	8	10	12	14	16	18	20	22
European	30	32	34	36	38	40	42	44	46	48

**BODY MEASUREMENTS: Select pattern size based on body measurements**

Bust	29½	30½	31½	32½	34	36	38	40	42	44	Ins.
Waist	22	23	24	25	26½	28	30	32	34	37	"
Hip-9" below waist	31½	32½	33½	34½	36	38	40	42	44	46	"
Back-neck to waist	15¼	15½	15¾	16	16¼	16½	16¾	17	17¼	17½	"

Shorts A	45"*	1½	1½	1½	1½	2	2½	2½	2½	2½	Yds.
60"*	1¼	1¼	1¼	1¼	1½	1½	1½	1½	1½	1½	"

Interfacing	20"	1½	1¼	1¼	1¼	1¼	1½	1½	1½	1½	"
-------------	-----	----	----	----	----	----	----	----	----	----	---

Pants B	45"*	2¾	2¾	2¾	2¾	2¾	3	3¼	3½	3½	Yds.
60"*	2	2½	2¼	2¼	2¾	2¾	2¾	2¾	2¾	2¾	"

Interfacing B, C	20"	¾	¾	1	1	1	1½	1½	1¼	1¼	Yds.
------------------	-----	---	---	---	---	---	----	----	----	----	------

Pants C	45"*	2¾	2¾	2¾	2¾	2¾	2¾	2¾	2¾	2¾	Yds.
60"*	2¾	2¾	2¾	2¾	2¾	2¾	2¾	2¾	2¾	2¾	"

Contrast (Side Front and Back)	45"*	2¾	2¾	2¾	2¾	2¾	2¾	2¾	2¾	2¾	Yds.
60"*	1¾	1¾	1¾	2	2	2¼	2¾	2¾	2¾	2¾	"

**FINISHED GARMENT MEASUREMENTS (Includes Design and Wearing Ease)**

A, B, C Waist	24	25	26	27	28½	30½	32½	34½	36½	38½	Ins.
---------------	----	----	----	----	-----	-----	-----	-----	-----	-----	------

A, B, C Hip	39½	40½	41½	42½	44	46	48	50	52	54	"
-------------	-----	-----	-----	-----	----	----	----	----	----	----	---

Width, each leg											
-----------------	--	--	--	--	--	--	--	--	--	--	--

Shorts A	33½	34	34½	35	35½	36	36½	37	37½	38	Ins.
----------	-----	----	-----	----	-----	----	-----	----	-----	----	------

Pants B	47	47½	48	48½	49	49½	50	50½	51	51½	"
---------	----	-----	----	-----	----	-----	----	-----	----	-----	---

Pants C	60¾	61¼	61¾	62¼	62¾	63¼	63¾	64¼	64¾	65¼	"
---------	-----	-----	-----	-----	-----	-----	-----	-----	-----	-----	---

Finished side length from waist											
---------------------------------	--	--	--	--	--	--	--	--	--	--	--

Shorts A	14¼	14½	14¾	15	15¼	15½	15¾	16	16¼	16½	Ins.
----------	-----	-----	-----	----	-----	-----	-----	----	-----	-----	------

Pants B	27¼	27½	27¾	28	28¼	28½	28¾	29	29¼	29½	"
---------	-----	-----	-----	----	-----	-----	-----	----	-----	-----	---

Pants C	40¼	40½	40¾	41	41¼	41½	41¾	42	42¼	42½	"
---------	-----	-----	-----	----	-----	-----	-----	----	-----	-----	---

\*with nap \*\*without nap

Moins Facile

**SHORT ET PANTALONS POUR JEUNES FEMMES**

**Tissus Conseillés:** Challis, Cotonnades, Denim, Toile de Lin. **Entoilage:** Thermocollant léger.

**Mercurie:** 1 fermeture à glissière de 18cm (coupée pour ajuster), 1 bouton de 1.5cm.

Tailles	4	6	8	10	12	14	16	18	20	22
Françaises	32	34	36	38	40	42	44	46	48	50
Européennes	30	32	34	36	38	40	42	44	46	48

**MESURES DU CORPS: Choisissez la taille du patron basée sur les mesures du corps**

Poitrine	75	78	80	83	87	92	97	102	107	112	cm
Taille	56	58	61	64	67	71	76	81	87	94	"

Hanches (23cm au-dessous de la taille)											
--	--	--	--	--	--	--	--	--	--	--	--

Dos du cou à la taille	80	83	85	88	92	97	102	107	112	117	cm
Short A	115cm*	1.4	1.4	1.4	1.5	1.8	1.8	1.9	1.9	2.1	2.2

150cm*	1.1	1.1	1.1	1.1	1.5	1.5	1.5	1.5	1.5	1.5	"
--------	-----	-----	-----	-----	-----	-----	-----	-----	-----	-----	---

Entoilage	51cm	1.0	1.0	1.1	1.1	1.1	1.3	1.3	1.4	1.4	1.4
-----------	------	-----	-----	-----	-----	-----	-----	-----	-----	-----	-----

Pantalon B	115cm*	2.5	2.5	2.5	2.6	2.6	2.6	2.7	2.7	3.2	3.2
------------	--------	-----	-----	-----	-----	-----	-----	-----	-----	-----	-----

150cm*	1.8	1.9	1.9	2.1	2.2	2.4	2.4	2.4	2.4	2.6	"
--------	-----	-----	-----	-----	-----	-----	-----	-----	-----	-----	---

Entoilage B, C	51cm	0.8	0.8	0.8	0.9	0.9	0.9	1.0	1.0	1.1	1.1
----------------	------	-----	-----	-----	-----	-----	-----	-----	-----	-----	-----

Pantalon C	115cm*	2.5	2.5	2.5	2.5	2.5	2.5	2.6	2.6	2.6	2.6
------------	--------	-----	-----	-----	-----	-----	-----	-----	-----	-----	-----

150cm*	2.2	2.2	2.2	2.2	2.3	2.3	2.3	2.3	2.3	2.3	"
--------	-----	-----	-----	-----	-----	-----	-----	-----	-----	-----	---

Contraste (Découpes devant et dos)											
------------------------------------	--	--	--	--	--	--	--	--	--	--	--

115cm*	2.2	2.2	2.2	2.2	2.2	2.2	2.3	2.3	2.3	2.3	m
--------	-----	-----	-----	-----	-----	-----	-----	-----	-----	-----	---

150cm*	1.6	1.6	1.7	1.8	1.9	2.1	2.1	2.2	2.3	2.3	"
--------	-----	-----	-----	-----	-----	-----	-----	-----	-----	-----	---

**MESURES DES VÊTEMENTS FINI (Motif et aisance de port compris)**

A, B, C Taille	61	64	66	69	72	77	83	88	93	98	cm
----------------	----	----	----	----	----	----	----	----	----	----	----

A, B, C Hanches	100	103	105	108	112	117	122	127	132	137	cm
-----------------	-----	-----	-----	-----	-----	-----	-----	-----	-----	-----	----

Largeur, chaque jambe											
-----------------------	--	--	--	--	--	--	--	--	--	--	--

Short A	85	86	88	89	90	91	93	94	95	97	cm
---------	----	----	----	----	----	----	----	----	----	----	----

Pantalon B	119	121	122	123	124	126	127	128	130	131	"
------------	-----	-----	-----	-----	-----	-----	-----	-----	-----	-----	---

Pantalon C	154	156	157	158	159	161	162	163	164	166	"
------------	-----	-----	-----	-----	-----	-----	-----	-----	-----	-----	---

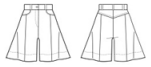
Longueur finie -- côté, taille à l'ourlet											
---	--	--	--	--	--	--	--	--	--	--	--

Short A	36	37	37	38	39	39	40	41	41	42	cm
---------	----	----	----	----	----	----	----	----	----	----	----

Pantalon B	69	70	70	71	72	72	73	74	74	75	"
------------	----	----	----	----	----	----	----	----	----	----	---

Pantalon C	102	103	104	104	105	105	106	107	107	108	"
------------	-----	-----	-----	-----	-----	-----	-----	-----	-----	-----	---

\*avec sens \*\*sans sens



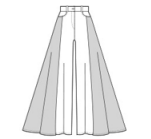
A



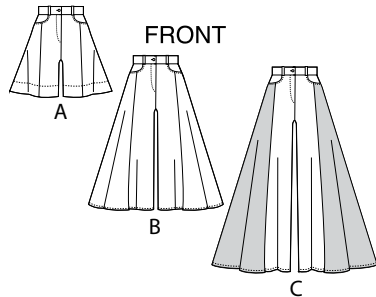
B



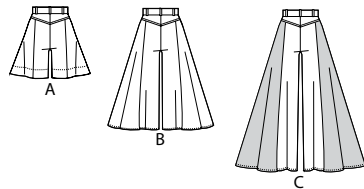
C



C

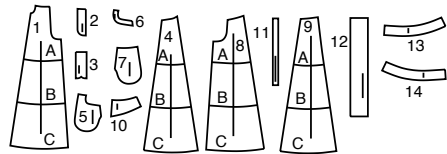


FRONT



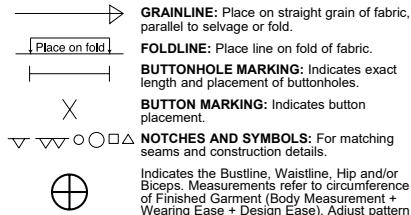
BACK

14 PATTERN PIECES



- 1 Front-A,B,C
- 2 Right Fly Facing-A,B,C
- 3 Left Fly-A,B,C
- 4 Side Front-A,B,C
- 5 Pocket Facing-A,B,C
- 6 Pocket Interfacing-A,B,C
- 7 Side Front and Pocket-A,B,C
- 8 Back-A,B,C
- 9 Side Back-A,B,C
- 10 Back Yoke-A,B,C
- 11 Carriers-A,B,C
- 12 Waistband-A,B,C
- 13 Front Hem Facing-A
- 14 Back Hem Facing-A

PATTERN MARKINGS



**GRAINLINE:** Place on straight grain of fabric, parallel to selvage or fold.  
**FOLDLINE:** Place line on fold of fabric.  
**BUTTONHOLE MARKING:** Indicates exact length and placement of buttonholes.  
**BUTTON MARKING:** Indicates button placement.  
**NOTCHES AND SYMBOLS:** For matching seams and construction details.  
 Indicates the Bustline, Waistline, Hip and/or Biceps. Measurements refer to circumference of Finished Garment (Body Measurement + Wearing Ease + Design Ease). Adjust pattern if necessary. The measurement excludes pleats, tucks, darts and seam allowances.  
**SEAM ALLOWANCE:** 5/8" (1.5cm) included unless otherwise indicated, but not printed on tissue.

ADJUST IF NECESSARY

Lengthen or Shorten at adjustment lines (==) or where indicated on pattern. If substantial length is added, you may need to purchase additional fabric.  
**TO SHORTEN:** Crease along adjustment line. Make a fold half the amount needed. Tape in place.  
**TO LENGTHEN:** Slash between adjustment lines. Spread amount as needed, keeping edges parallel. Tape over paper.  
 When Alteration lines are not on tissue, lengthen or shorten at lower edge.

CUTTING AND MARKING

**SHRINK FABRIC** if not labeled pre-shrunk. Press.

**CIRCLE LAYOUT** for View, Size, Fabric Width.

Use **WITH NAP** layout for fabrics with one-way designs, nap, pile or surface shading. Because most knits have surface shading, a with nap layout is used.

For **DOUBLE THICKNESS (WITH FOLD)** - fold fabric with right sides together.

\* **DOUBLE THICKNESS (WITHOUT FOLD)** - For fabrics with nap, fold fabric crosswise, right sides together. Mark as shown. Cut along crosswise fold of fabric (A). Turn upper layer 180° so arrows go in same direction and place over lower layer, right sides together (B).

For **SINGLE THICKNESS** - place fabric right side up. (For Fur Pile fabrics, place pile side down.)

★ Cut other pieces first, allowing enough fabric to cut this piece. Open fabric. For "Cut 1" pieces, cut piece once on single layer of fabric with piece face up on right side of fabric.

Pattern may have cutting lines for several sizes. Select the proper cutting line or pattern pieces for your size.

Before **CUTTING** place all pieces on fabric according to layout. Pin. (Layouts show approximate position of pattern pieces; position may vary according to your pattern size.) Cut **ACCURATELY**, cutting notches outward.

Before removing pattern, **TRANSFER MARKINGS** and lines of construction to Wrong Side of fabric, using the Pin and Chalk Pencil method or Tracing Paper and Dressmaker Wheel. Markings needed on right side of fabric should be thread traced.

**NOTE:** Broken-line boxes (a! b! c!) in layouts represent pieces cut by measurements provided.

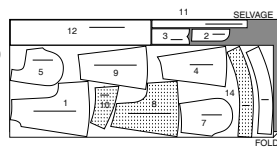
CUTTING LAYOUTS

RIGHT SIDE OF PATTERN	WRONG SIDE OF PATTERN	RIGHT SIDE OF FABRIC	WRONG SIDE OF FABRIC
-----------------------	-----------------------	----------------------	----------------------

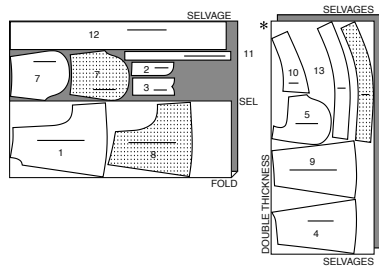
SHORTS A

USE PIECES: 1 2 3 4 5 7 8 9 10 11 12 13 14

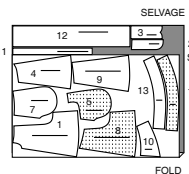
45" (115 CM)  
WITH NAP  
SIZES 4 6 8 10



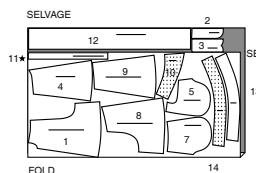
45" (115 CM)  
WITH NAP  
SIZES 12 14 16 18 20 22



60" (150 CM)  
WITH NAP  
SIZES 4 6 8 10



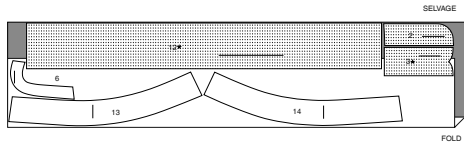
60" (150 CM)  
WITH NAP  
SIZES 12 14 16 18 20 22



INTERFACING A

USE PIECES: 2 3 6 12 13 14

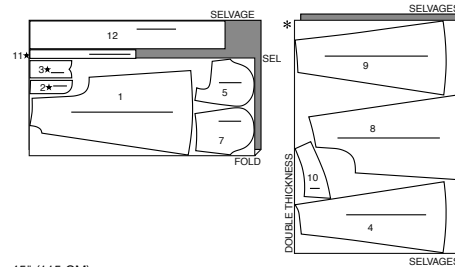
20" (51 CM)  
ALL SIZES



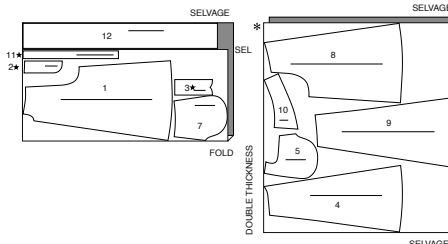
PANTS B

USE PIECES: 1 2 3 4 5 7 8 9 10 11 12

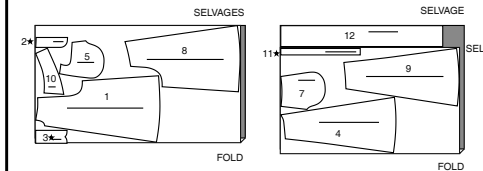
45" (115 CM)  
WITH NAP  
SIZES 4 6 8 10 12 14 16 18



45" (115 CM)  
WITH NAP  
SIZES 20 22



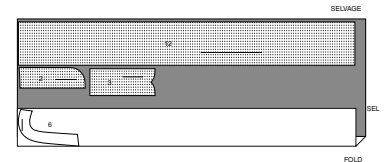
60" (150 CM)  
WITH NAP  
ALL SIZES



INTERFACING B,C

use pieces: 2 3 6 12

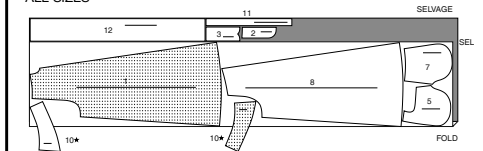
20" (51 CM)  
ALL SIZES



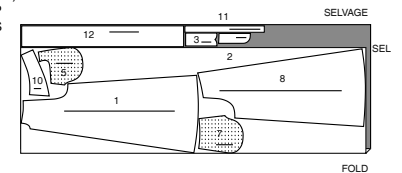
PANTS C

USE PIECES: 1 2 3 5 7 8 10 11 12

45" (115 CM)  
WITH NAP  
ALL SIZES



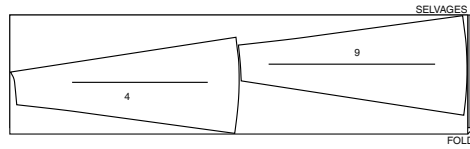
60" (150 CM)  
WITH NAP  
ALL SIZES



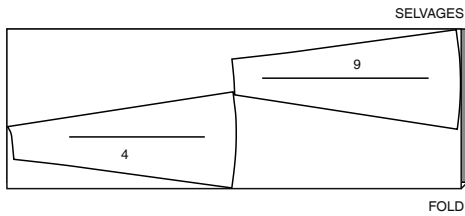
### CONTRAST C SIDES

USE PIECES: 4 9

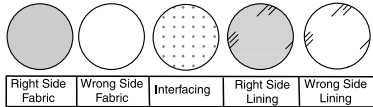
45" (115 CM)  
WITH NAP  
ALL SIZES



60" (150 CM)  
WITH NAP  
ALL SIZES

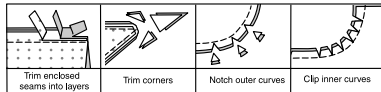


### SEWING INFORMATION FABRIC KEY



### SEAM ALLOWANCES

Use 1/4" (6mm) seam allowances unless otherwise indicated.



### PIN AND FIT

Pin or baste seams, **RIGHT SIDE TOGETHER**, matching notches. Fit garment before stitching major seams.

### PRESS

Press seam allowances flat; then open unless otherwise stated. Clip where necessary so they lie flat.

### GLOSSARY

Sewing methods in **BOLD TYPE** have Sewing Tutorial Video available. Scan **QR CODE** to watch videos:

**CARRIERS** - see **Loops and Straps**: "how to see belt loops, aka carriers" video.

**EDGESTITCH** - see **Machine Stitches**: "how to edgestitch" video.

**FLY FRONT ZIPPER** - see **Zipper**: "sewing a fly front zipper" video.

**REINFORCE** - see **Machine Stitches**: "how to reinforce" video.

**STAYSTITCH** - see **Machine Stitches**: "how to do stay-stitching" video.

**STITCH IN THE DITCH** - see **Machine Stitches**: "how to stitch in the ditch" video.

**TACK** - See **Hand-Stitching**: "how to tack" video.

**TOPSTITCH** - see **Machine Stitches**: "how to topstitch" video.

**TRIM** - see **How to Sew: Trim, Clip, and Layer Seams** video.

**UNDERSTITCH** - see **Machine Stitches**: "how to understitch" video.

**PATTERN PIECES WILL BE IDENTIFIED BY NUMBERS THE FIRST TIME THEY ARE USED.**

**STITCH 5/8" (1.5CM) SEAMS WITH RIGHT SIDES TOGETHER UNLESS OTHERWISE STATED.**

### SEWING TUTORIALS



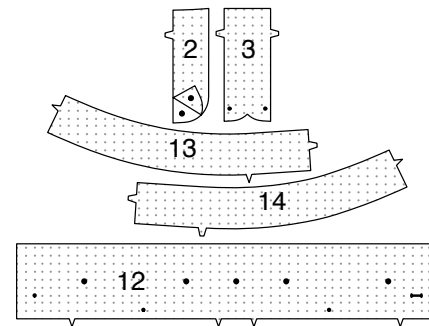
Build your skills viewing short, easy-to-follow videos at [simplicity.com/sewingtutorials](http://simplicity.com/sewingtutorials)

### SHORTS OR PANTS, A, B, C

**NOTE:** The first view mentioned will be illustrated unless otherwise indicated.

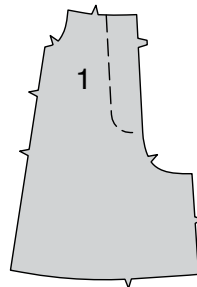
### INTERFACING

1. With the exception of **POCKET FACING (5)**, fuse interfacing to wrong side of each matching **FABRIC** section, following manufacturer's instructions.



### FRONT SHORTS/PANTS

2. Transfer stitching line on right **FRONT (1)** to **OUTSIDE**, using hand-basting.



3. Insert **FLY FRONT ZIPPER**, using **RIGHT FLY FACING (2)** and **LEFT FLY (3)** sections.

A. Stitch front sections together at center front between large dot and notch.

B. Turn in left front opening edge along foldline; press.

C. Place closed zipper (face up) under left front opening edge, having pressed edge close to zipper teeth and zipper stop at small dot. Using a zipper foot, baste close to pressed edge.

D. With right sides together, fold left fly along foldline. Stitch lower edge. Trim. Turn. Press. Baste raw edges.

E. On inside, pin left fly to left front opening edge (over zipper), matching notches and small dots, having raw edges even. Baste along previous basting for zipper.

F. On outside, using a zipper foot, stitch close to pressed edge of front through all layers.

G. **FINISH** outer edge of right fly facing. Pin fly facing to right front opening edge, matching notches and large dots. Stitch, ending at large dot. **TRIM. UNDERSTITCH** fly facing. Turn facing to inside.

H. Lap right front over left, matching centers. Baste close to edge through all thicknesses.

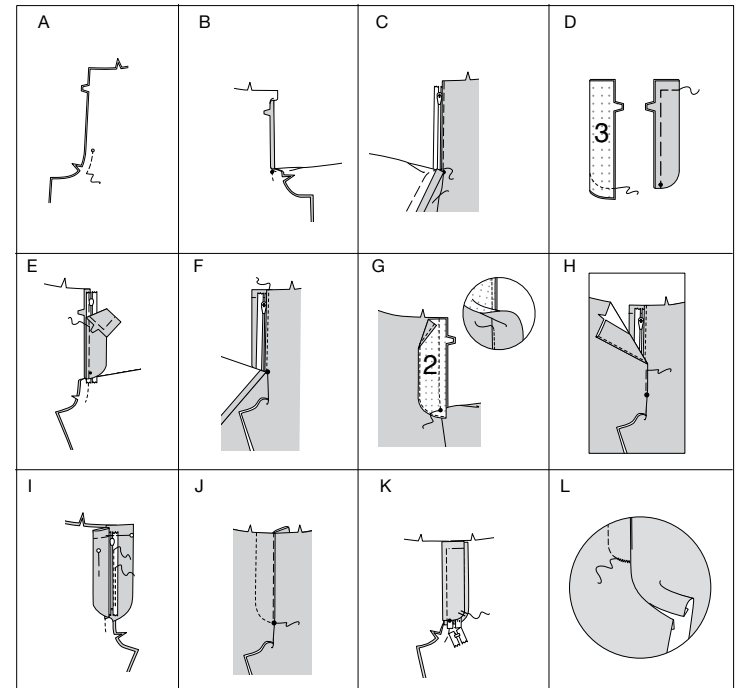
I. Pin left fly out of the way. Open out fly facing. Pin remaining zipper tape to fly facing, keeping right front free. Using a zipper foot, stitch in place close to zipper teeth and along center of zipper tape.

J. Turn facing down. On outside, stitch right front along stitching lines, keeping left fly free.

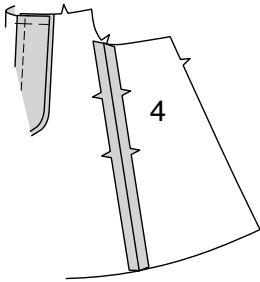
K. Turn left fly back in place. On inside, hand tack fly and facing together at lower edge, as shown. Trim away excess zipper tape even with lower edge of fly, if needed.

L. If desired, on outside, machine-stitch a bar tack across lower end of fly through all thicknesses.

**TIP:** See **ZIPPER**: "sewing a fly front zipper" for accompanying video.



4. Stitch SIDE FRONT (4) to side edge of front, matching single notches.

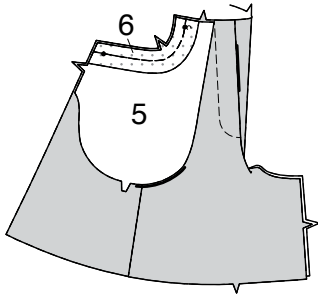


5. Fuse POCKET INTERFACING (6) to wrong side of POCKET FACING (5).

With RIGHT sides together and raw edges even, pin pocket facing to front, matching small dots.

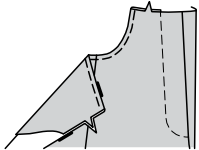
Stitch single-notched edge, as shown.

TRIM SEAM; clip curves.

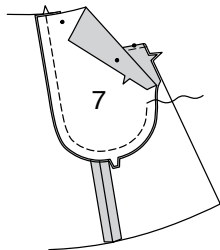


6. Turn pocket facing to INSIDE; press.

On OUTSIDE, TOPSTITCH 1/4" (6mm) from finished edge.

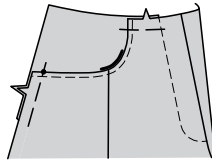


7. With RIGHT sides together and raw edges even, pin SIDE FRONT AND POCKET (7) to pocket facing. Stitch double-notched edge, as shown.



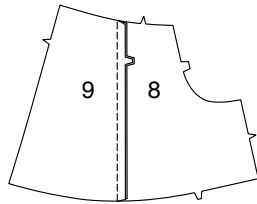
8. On OUTSIDE, lap shorts or pants front over side front pocket and facing, matching small dots, and having raw edges even; pin.

Baste side and upper edges together.



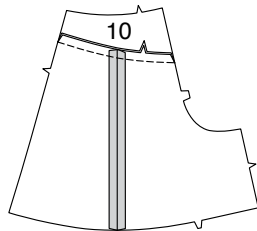
BACK

9. Pin BACK (8) to SIDE BACK (9), matching double notches; stitch.



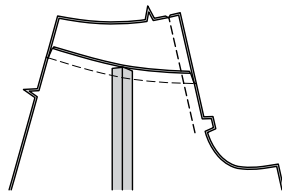
10. Stitch lower edge of BACK YOKE (10) to back.

Press seam toward yoke.

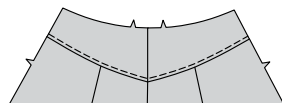


11. Pin back sections together at center back, matching notches and yoke seam.

Stitch seam above triple notches.

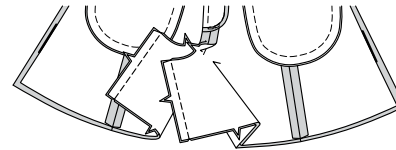


12. On outside, TOPSTITCH lower edge of yoke, pivoting with needle in fabric at center back seam.



REMAINING SEAMS

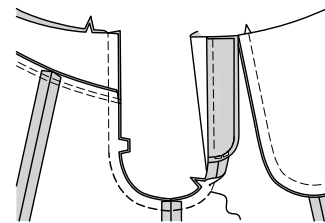
13. Stitch front to back at inner leg seams.



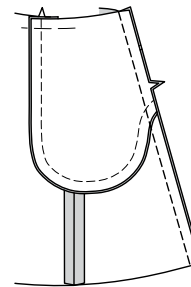
14. Pin remainder of center seam, matching inner leg seams.

Stitch, connecting to previous stitching.

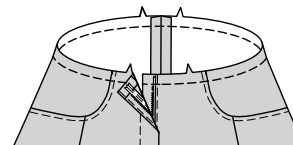
Stitch again over first stitching to REINFORCE seam.



15. Stitch back to front at side seams.



16. STAYSTITCH upper edge of garment.

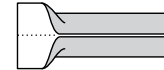


CARRIERS

17. To make CARRIERS, fold CARRIER (11) in half lengthwise, with WRONG sides together. Press, setting in a crease.



18. Open out long edges of carrier and turn them to WRONG side so that they meet at the crease. Press.



19. Fold carrier in half lengthwise, bringing pressed edges together.

Stitch close to both long edges.



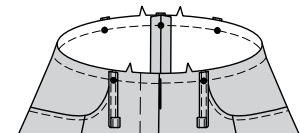
20. Cut carrier into five sections, each 4" (10cm) long.

Press under 5/8" (1.5cm) on one end of each carrier.



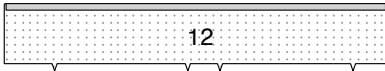
21. On OUTSIDE, center and pin carriers to upper edge of garment over large dots, having raw edges even and pressed ends facing up towards you.

Baste across raw edges.

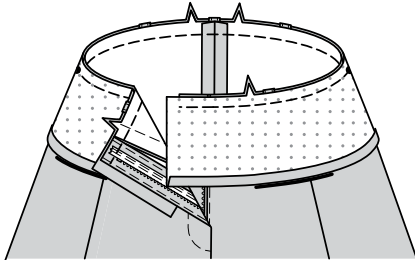


**WAISTBAND**

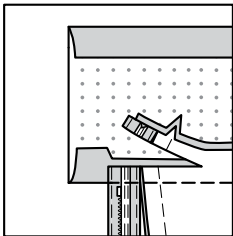
**22.** Press under 1/2" (1.5cm) on long unnotched edge of WAISTBAND (12).



**23.** With RIGHT sides together, pin waistband to garment, matching centers and placing small dots at side seams. (Ends of waistband will extend 5/8" (1.5cm) beyond finished edges of front). Stitch.

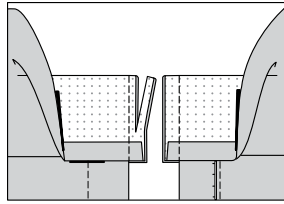


**24.** Trim seam to 1/4" (6mm), as shown. Press seam toward waistband, pressing band out.



**25.** Fold waistband with RIGHT sides together. Stitch across each end of band.

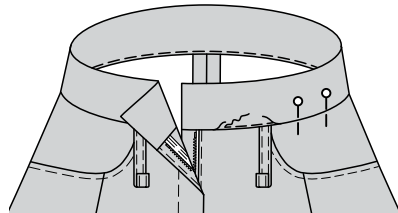
**TRIM** seams and corners.



**26.** Turn ends of waistband RIGHT side out; press.

On INSIDE, pin pressed edge of band 1/8" (3mm) over seam, placing pin on OUTSIDE.

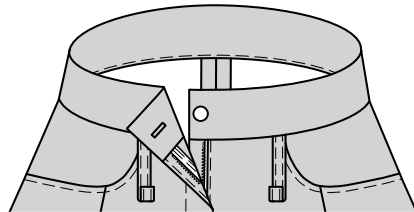
On OUTSIDE, **STITCH IN THE "DITCH"** of groove of seam, catching in pressed edge on INSIDE.



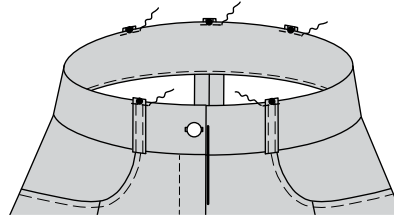
**FINISHING**

**27.** Make buttonhole in RIGHT end of waistband at marking.

Sew button to LEFT end of waistband at small dot.

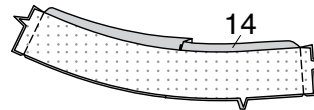


**28.** Turn carriers up over waistband, centering pressed edges over large dots; **EDGESTITCH** in place.

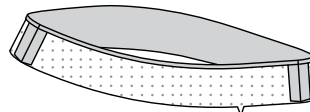


**VIEW A:**

**29.** For each leg, stitch one FRONT FACING (13) to BACK HEM FACING (14) together at sides.



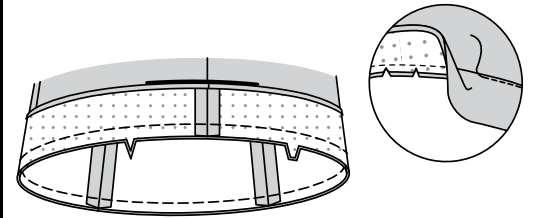
**30.** Press under 1/4" (6mm) on unnotched edge of hem facing.



**31.** With RIGHT sides together and raw edges even, pin facing to lower edge of leg, matching seams and notches; stitch.

Trim seam.

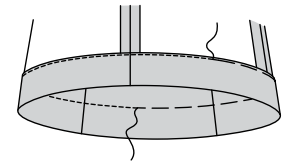
**UNDERSTITCH** hem facing.



**32.** Turn facing to INSIDE; press.

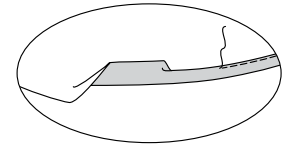
Baste close to inner pressed edge.

On OUTSIDE, stitch as basted; remove basting.



**VIEWS B, C:**

**33.** Make a 5/8" (1.5cm) **NARROW HEM** on lower edges of garment.





# Congrats!

You've completed your sewing adventure

---

**SHARE  
YOUR** LOOK



Post your pattern and tag us  
[@simplicity\\_creative\\_group](#) and [#simplicitypatterns](#)  
for a chance to be featured on our social media.

Look for more PDF patterns at [simplicity.com](#)

Have a question or need help with your sewing project call us at  
1-800-782-0323

**McCall's**  
by **design**<sub>group</sub>

McCall's ©2024 a division of IG Design Group Americas Inc. • Atlanta, GA 30342 USA [www.thedesigngroup.com](#) • All Rights Reserved. [www.mccall.com](#) • Made in the U.S.A. Fabriqué aux États-Unis.  
To be used for individual private home use only and not for commercial or manufacturing purposes. • A usage privé seulement et non à des fins commerciales ou de production en série. • Para uso privado solamente, no se puede utilizar con propósitos de comercialización o de producción en serie.