

**McCall's**

M8510



Designed and printed in USA

Average

**MISSES' SKIRTS**

**Suggested Fabrics:** Challis, Cotton Blends, Lawn. **Interfacing:** Lightweight Fusible.

**Notions:** A,B,C: One 7" (18cm) invisible zipper, one hook and bar.

Sizes	8	10	12	14	16	18	20	22	24	26
European	34	36	38	40	42	44	46	48	50	52

**BODY MEASUREMENTS: Select pattern size based on body measurements**

Bust	31½	32½	34	36	38	40	42	44	46	48	Ins.
Waist	24	25	26½	28	30	32	34	37	39	41	"
Hip-9" below waist	33½	34½	36	38	40	42	44	46	48	50	"
Back-neck to waist	15¾	16	16¼	16½	16¾	17	17¼	17½	17¾	18	"

**Interfacing A,B,C**

	20" - 1 ¾ yds.											
Skirt A	60**	4%	4%	4%	4%	4%	4%	4%	4%	4%	4%	Yds.
Skirt B	60**	2	2	2	2½	2½	2½	2½	2½	2½	2½	Yds.
Contrast (Panels 2, 4)	60**	1%	1%	2	2	2½	2½	2½	2½	2½	2½	Yds.
Skirt C	60**	7%	1	1	1	1½	1½	1½	1½	1½	1½	Yds.
Contrast 1 (Panel 2)	60**	1%	1%	1%	1%	1½	1½	1½	1½	1½	Yds.	
Contrast 2 (Panel 3)	60**	1%	1%	1%	1%	2	2	2	2½	2½	Yds.	
Contrast 3 (Panel 4)	60**	1%	1¼	1¼	1¼	1¼	1¼	1¼	1¼	1¼	Yds.	
Contrast 4 (Panel 5)	60**	½	½	½	½	½	½	½	½	½	Yds.	

**FINISHED GARMENT MEASUREMENTS (Includes Design and Wearing Ease)**

A,B,C Waist	25	26	27½	29½	31½	33½	35½	37½	39½	41½	Ins.
Finished back length from waist											
Skirt A,B,C	34	34	34	34	34	34	34	34	34	34	Ins.

\*with nap \*\*without nap

Moins Facile

**JUPES POUR JEUNES FEMMES**

**Tissus Conseillés:** Challis, Cotonnades, Linon. **Entoilage:** Thermocollant léger.

**Mercurie:** A,B,C: 1 fermeture à glissière invisible de 18cm, 1 crochet pour jupe.

Tailles	8	10	12	14	16	18	20	22	24	26
Françaises	36	38	40	42	44	46	48	50	52	54
Européen	34	36	38	40	42	44	46	48	50	52

**MESURES DU CORPS: Choisissez la taille du patron basée sur les mesures du corps**

Poitrine	80	83	87	92	97	102	107	112	117	122	cm
Taille	61	64	67	71	76	81	87	94	99	104	"
Hanches (23cm au-dessous de la taille)	85	88	92	97	102	107	112	117	122	127	cm
Dos du cou à la taille	40	40.5	41.5	42	42.5	43	44	44.5	45	46	"

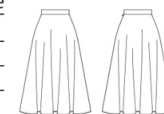
**Entoilage A,B,C**

	51cm - 1.3m										
Jupe A	150cm*	3.8	3.8	3.8	3.8	3.9	3.9	3.9	3.9	4.0	m
Jupe B	150cm*	1.8	1.8	1.8	1.8	1.9	1.9	1.9	2.1	2.2	m
Contraste (Panneaux 2, 4)	150cm*	1.7	1.7	1.8	1.8	1.9	1.9	2.1	2.1	2.1	m
Jupe C	150cm*	0.8	0.9	0.9	0.9	1.0	1.0	1.1	1.1	1.3	m
Contraste 1 (Panneau 2)	150cm*	1.3	1.3	1.3	1.3	1.4	1.4	1.4	1.5	1.5	m
Contraste 2 (Panneau 3)	150cm*	1.7	1.7	1.7	1.7	1.8	1.8	1.8	1.9	1.9	m
Contraste 3 (Panneau 4)	150cm*	1.0	1.1	1.1	1.1	1.1	1.1	1.1	1.1	1.1	m
Contraste 4 (Panneau 5)	150cm*	0.5	0.5	0.5	0.5	0.5	0.5	0.5	0.5	0.5	m

**MESURES DES VÊTEMENTS FINI (Motif et aisance de port compris)**

A,B,C Taille	164	66	70	75	80	85	90	95	100	105	cm
Longueur finie - dos, taille à l'ourlet											
Jupe A,B,C	86	86	86	86	86	86	86	86	86	86	cm

\*avec sens \*\*sans sens



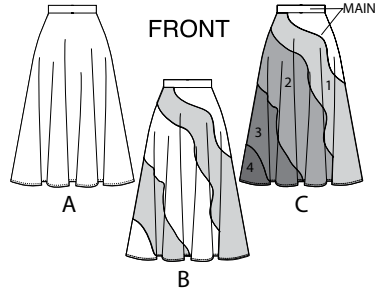
A



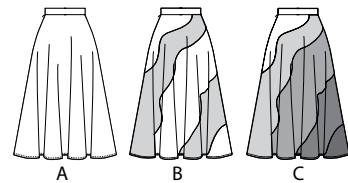
B



C

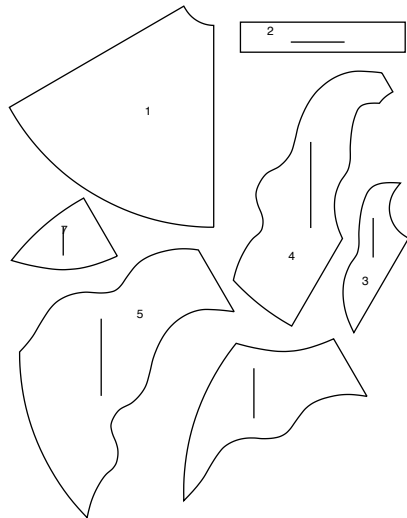


FRONT



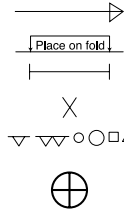
BACK

7 PATTERN PIECES



- 1 FRONT AND BACK A
- 2 WAISTBAND - A,B,C
- 3 PANEL 1 - B,C
- 4 PANEL 2 - B,C
- 5 PANEL 3 - B,C
- 6 PANEL 4 - B,C
- 7 PANEL 5 - B,C

PATTERN MARKINGS



**GRAINLINE:** Place on straight grain of fabric, parallel to selvage or fold.  
**FOLDLINE:** Place line on fold of fabric.  
**BUTTONHOLE MARKING:** Indicates exact length and placement of buttonholes.  
**BUTTON MARKING:** Indicates button placement.  
**NOTCHES AND SYMBOLS:** For matching seams and construction details.  
 Indicates the Bustline, Waistline, Hip and/or Biceps. Measurements refer to circumference of Finished Garment (Body Measurement + Wearing Ease + Design Ease). Adjust pattern if necessary. The measurement excludes pleats, tucks, darts and seam allowances.  
**SEAM ALLOWANCE:** 5/8" (1.5cm) included unless otherwise indicated, but not printed on tissue.

ADJUST IF NECESSARY

Lengthen or Shorten at adjustment lines (==)  
 or where indicated on pattern. If substantial length is added, you may need to purchase additional fabric.  
**TO SHORTEN:** Crease along adjustment line. Make a fold half the amount needed. Tape in place.  
**TO LENGTHEN:** Slash between adjustment lines. Spread amount as needed, keeping edges parallel. Tape over paper.  
 When Alteration lines are not on tissue, lengthen or shorten at lower edge.

CUTTING AND MARKING

**SHRINK FABRIC** if not labeled pre-shrunk. Press.  
**CIRCLE LAYOUT** for View, Size, Fabric Width.  
 Use **WITH NAP** layout for fabrics with one-way designs, nap, pile or surface shading. Because most knits have surface shading, a with nap layout is used.  
 For **DOUBLE THICKNESS (WITH FOLD)** - fold fabric with right sides together.  
**\* DOUBLE THICKNESS (WITHOUT FOLD)** - For fabrics with nap, fold fabric crosswise, right sides together. Mark as shown. Cut along crosswise fold of fabric (A). Turn upper layer 180° so arrows go in same direction and place over lower layer, right sides together (B).  
 For **SINGLE THICKNESS** - place fabric right side up. (For Fur Pile fabrics, place pile side down.)

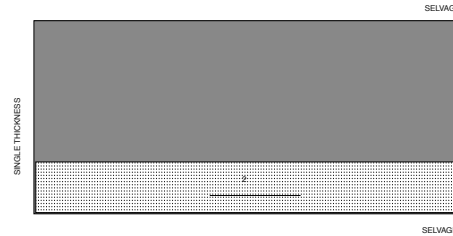
★ Cut other pieces first, allowing enough fabric to cut this piece. Open fabric. For "Cut 1" pieces, cut piece once on single layer of fabric with piece face up on right side of fabric.  
 Pattern may have cutting lines for several sizes. Select the proper cutting line or pattern piece for your size.  
 Before **CUTTING** place all pieces on fabric according to layout. Pin. (Layouts show approximate position of pattern pieces; position may vary according to your pattern size.) Cut **ACCURATELY**, cutting notches outward.  
 Before removing pattern, **TRANSFER MARKINGS** and lines of construction to Wrong Side of fabric, using the Pin and Chalk Pencil method or Tracing Paper and Dressmaker Wheel. Markings needed on right side of fabric should be thread traced.  
**NOTE:** Broken-line boxes (a! b! c!) in layouts represent pieces cut by measurements provided.

CUTTING LAYOUTS

RIGHT SIDE OF PATTERN	WRONG SIDE OF PATTERN	RIGHT SIDE OF FABRIC	WRONG SIDE OF FABRIC
-----------------------	-----------------------	----------------------	----------------------

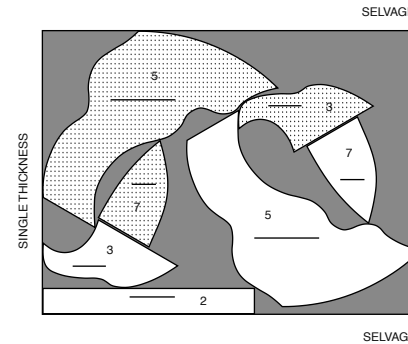
INTERFACING A, B, C  
USE PIECE: 2

20" (51 CM)  
ALL SIZES



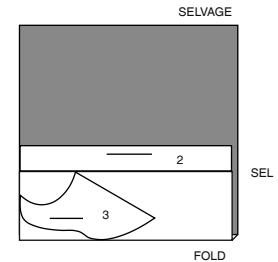
SKIRT B  
USE PIECES: 2 3 5 7

60" (150 CM)  
WITH NAP  
ALL SIZES



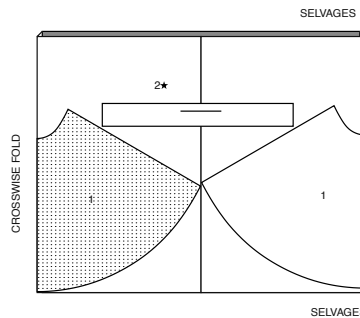
DRESS C  
USE PIECES: 2 3

60" (150 CM)  
WITH NAP  
ALL SIZES



SKIRT A  
USE PIECES: 1 2

60" (150 CM)  
WITH NAP  
ALL SIZES



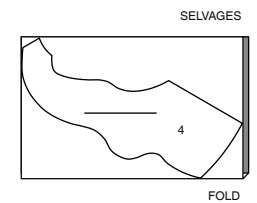
CONTRAST B (PANEL 2 4)  
USE PIECES: 4 6

60" (150 CM)  
WITH NAP  
ALL SIZES



CONTRAST 1 (PANEL 2)  
USE PIECE: 4

60" (150 CM)  
WITH NAP  
SIZES 8 10 12 14 16



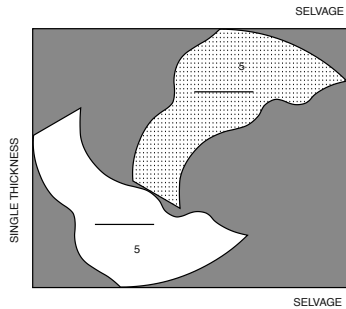
60" (150 CM)  
WITH NAP  
SIZES 18 20 22 24 26



**CONTRAST 2 (PANEL 3)**

USE PIECE: 5

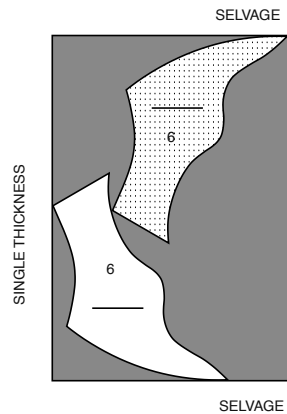
60" (150 CM)  
WITH NAP  
ALL SIZES



**CONTRAST 3 (PANEL 4)**

USE PIECE: 6

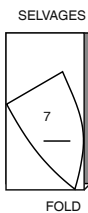
60" (150 CM)  
WITH NAP  
ALL SIZES



**CONTRAST 4 (PANEL 5)**

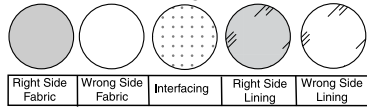
USE PIECE: 7

60" (150 CM)  
WITH NAP  
ALL SIZES



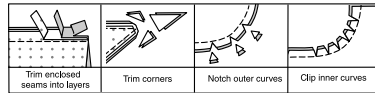
**SEWING INFORMATION**

**FABRIC KEY**



**SEAM ALLOWANCES**

Use 1/4" (6mm) seam allowances unless otherwise indicated.



**PIN AND FIT**

Pin or baste seams, **RIGHT SIDE TOGETHER**, matching notches. Fit garment before stitching major seams.

**PRESS**

Press seam allowances flat; then open unless otherwise stated. Clip where necessary so they lie flat.

**GLOSSARY**

Sewing methods in **BOLD TYPE** have Sewing Tutorial Video available. Scan **QR CODE** to watch videos:

**INVISIBLE ZIPPER** - see **Zipper: "sewing an invisible zipper"** video.

**STAYSTITCH** - see **Machine Stitches: "how to stay-stitching"** video.

**STITCH IN THE DITCH** - see **Machine Stitches: "how to stitch in the ditch"** video.

**TRIM** - see **How to Sew: Trim, Clip, and Layer Seams** video.

**PATTERN PIECES WILL BE IDENTIFIED BY NUMBERS THE FIRST TIME THEY ARE USED.**

**STITCH 5/8" (1.5CM) SEAMS WITH RIGHT SIDES TOGETHER UNLESS OTHERWISE STATED.**

**SEWING TUTORIALS**

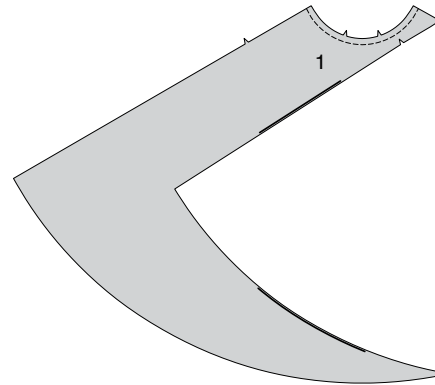


Build your skills viewing short, easy-to-follow videos at [simplicity.com/sewingtutorials](http://simplicity.com/sewingtutorials)

**SKIRT A, B, C**

**FRONT AND BACK A**

**1. STAYSTITCH** upper edge of each FRONT AND BACK (1) section.



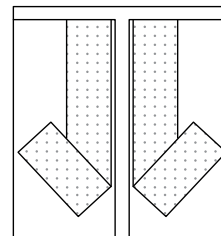
**2. OPTIONAL:**

To prevent bias opening edges from rippling when applying zipper, stabilize left zipper opening edges, as follows:

Cut two strips of interfacing from your remnants or from a lightweight knit interfacing, each 1" (2.5cm) wide and 1-1/4" (3.2cm) longer than your zipper opening. Pin to wrong side of opening edges, having raw edges even. Fuse in place, following manufacturer's directions.

**TIP:** You can also use organza cut on the straight grain. Pin in place and zigzag or overlock outer edges together. Hand-baste inner edges; remove basting when done.

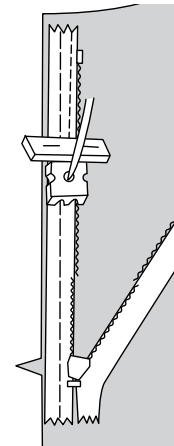
**NOTE:** Stitch the **INVISIBLE ZIPPER** using an invisible zipper foot.



**3.** Open zipper and press tape flat on **WRONG** side unrolling the coils. Do not press coils. (Use a low iron setting.)

On **OUTSIDE**, pin **RIGHT** side of zipper face down on **RIGHT** side of zipper opening. Have the coil along the seam line, the tape within the seam allowance and the top stop 3/4" (2cm) below upper edge, as shown.

Hand-baste along center of the tape. Position zipper foot at top of zipper with **RIGHT** groove of foot over coil. Stitch along tape to notch.

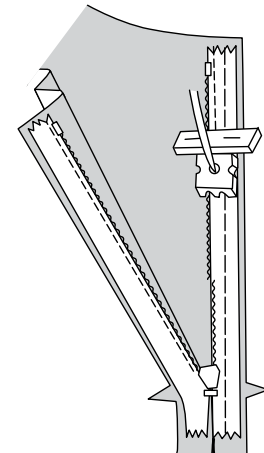


**4.** Pin remaining half of zipper to **LEFT** side of zipper opening in same manner. Make sure upper and lower edges of skirt are even.

Hand-baste along center of tape.

Position zipper foot at top of zipper with **LEFT** groove over coil.

Stitch along tape to notch.



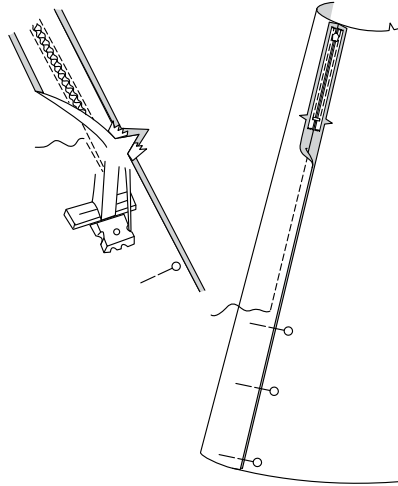
5. Close zipper and check that it is invisible from the OUTSIDE.

Pull free ends of zipper tape away from seam allowance.

Pin remaining left seam together below zipper.

Position zipper foot all the way to the LEFT so the needle goes down through the outer notch of the foot.

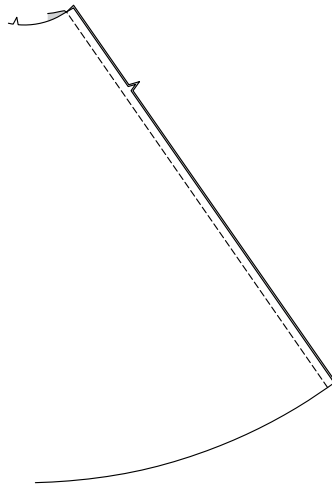
Start stitching seam 1/4" (6mm) above lowest stitch and slightly to the LEFT. Stitch seam for about 3" (7.5cm). Stitch remainder of seam using your regular presser foot.



6. If you prefer, open out each seam allowance at end of zipper and stitch tape to seam allowance.



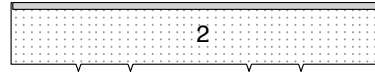
7. Stitch right side seam.



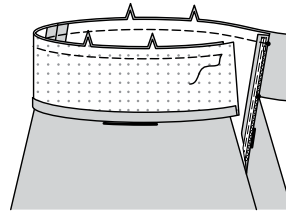
### WAISTBAND

8. Apply fusible interfacing to wrong side of WAISTBAND (2), following manufacturer's directions.

Press under 1/2" (1.3cm) on long unnotched edge of waistband.

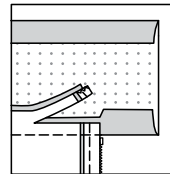


9. With RIGHT sides together, pin waistband to skirt, matching centers and placing small dot at right side seam as shown. Left end of waistband will extend 5/8" (1.5cm) beyond finished edge. Stitch.



10. TRIM seam to within 1/4" (6mm). DO NOT trim seam allowance on RIGHT end of waistband extension.

Press seam toward band, pressing band out.



11. Fold band along foldline, having right sides together.

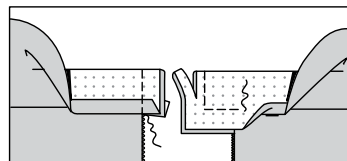
Stitch across LEFT end of band.

Turn RIGHT end of waistband seam allowance down and open out

pressed edge so that raw edges are even. Pin.

Stitch ends along seam line, being careful not to catch in zipper teeth, as shown.

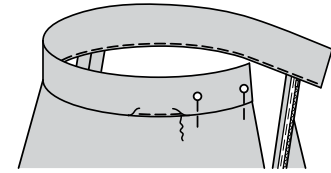
TRIM seams and corners.



12. Turn ends right side out; press.

On INSIDE, pin pressed edge of band 1/8" (3mm) over seam, placing pins on outside.

On outside, STITCH IN THE DITCH or "groove" of the seam, catching in pressed edge on inside.

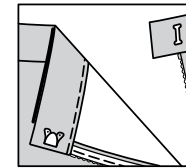


### FINISHING

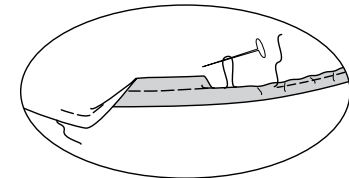
13. Lap front end of waistband over back.

Fasten with hook closure, as shown.

NOTE: Bias has the tendency to stretch in some areas resulting in an uneven hemline. To avoid this, hang skirt overnight, allowing the fabric grain time to "settle in". Trim hem evenly, allowing 5/8" (1.5cm) for hem allowance.



14. Stitch 1/4" (6mm) from lower edge of skirt, using a long machine-stitch, as shown. Turn up 5/8" (1.5cm) hem on lower edge of skirt. To form narrow hem, tuck under raw edge to meet crease. Pull thread to ease in fullness; press. Stitch hem in place.



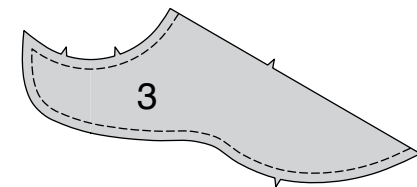
### SKIRT B, C

#### FRONT AND BACK

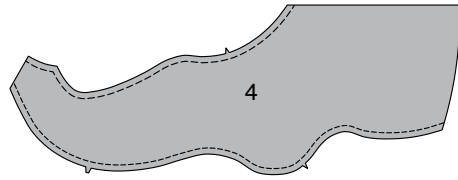
NOTE: Separate front panels from back panels. Mark center of panel 1 (3), panel 2 (4) and panel 3 (5), at upper and lower edges within seam allowance.

1. Make front of skirt, as follows:

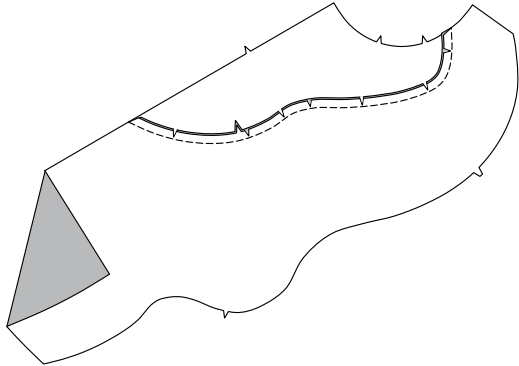
STAYSTITCH curved notched edges of PANEL 1 (3).



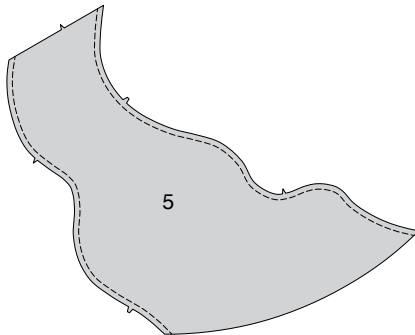
2. **STAYSTITCH** curved notched edges of PANEL 2 (4), as shown.



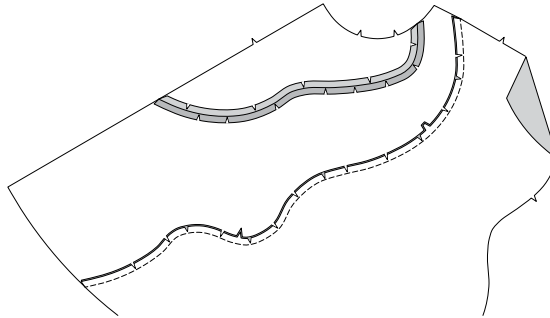
3. Pin panel 2 to panel 1, matching centers and notches, clipping inner curves where necessary; baste. Stitch. Clip curves.



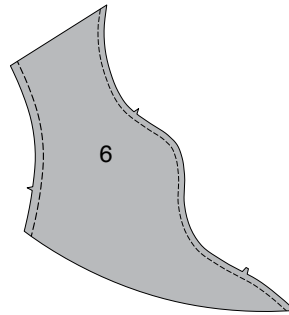
4. **STAYSTITCH** curved notched edges of PANEL 3 (5), as shown.



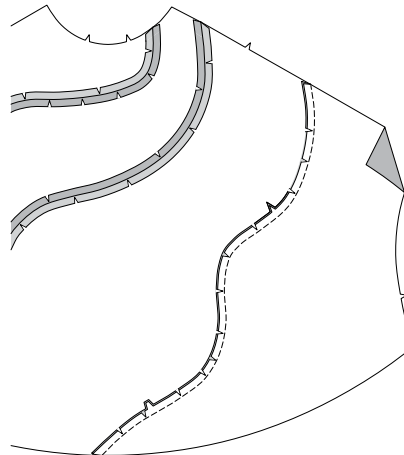
5. Pin panel 3 to panel 2, matching centers and notches, clipping inner curves where necessary; baste. Stitch. Clip curves.



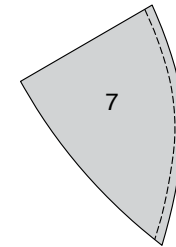
6. **STAYSTITCH** curved upper and inner edges of PANEL 4 (6), as shown.



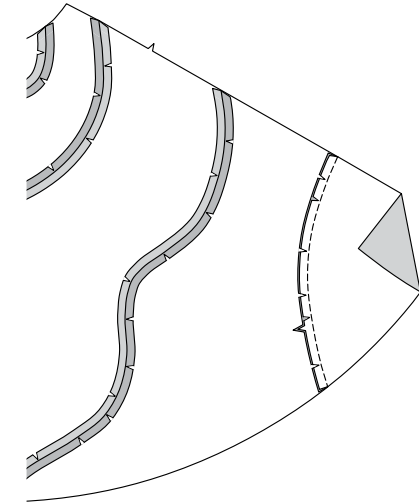
7. Pin panel 4 to panel 3, matching notches, clipping inner curves where necessary; baste. Stitch. Clip curves.



8. **STAYSTITCH** curved notched edge of PANEL 5 (7).

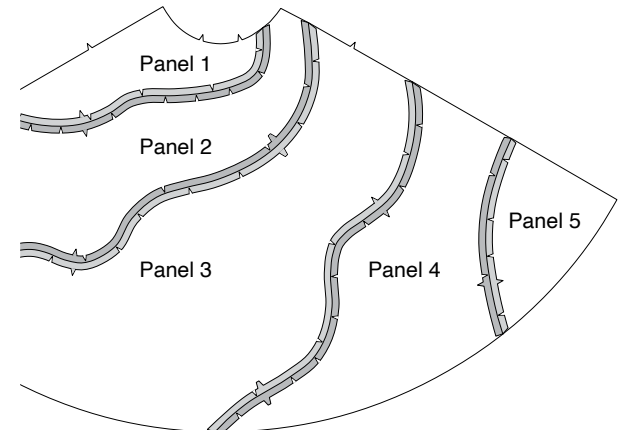


9. Pin panel 5 to panel 4, clipping inner curves, where necessary. Stitch. Clip curves.



10. **STAYSTITCH** skirt back sections and stitch together same as for front.

Continue same as for **View A** - see steps 3 through 14, making sure to match seams on side edges when applying zipper and stitching side seams.





# Congrats!

You've completed your sewing adventure

---

**SHARE  
YOUR** LOOK



Post your pattern and tag us  
[@simplicity\\_creative\\_group](#) and [#simplicitypatterns](#)  
for a chance to be featured on our social media.

Look for more PDF patterns at [simplicity.com](https://www.simplicity.com)

Have a question or need help with your sewing project call us at  
1-800-782-0323

**McCall's**  
by **design**<sub>group</sub>

McCall's ©2024 a division of IG Design Group Americas Inc. • Atlanta, GA 30342 USA [www.thedesigngroup.com](http://www.thedesigngroup.com) • All Rights Reserved. [www.mccall.com](http://www.mccall.com) • Made in the U.S.A. Fabriqué aux États-Unis.

To be used for individual private home use only and not for commercial or manufacturing purposes. • A usage privé seulement et non à des fins commerciales ou de production en série. • Para uso privado solamente, no se puede utilizar con propósitos de comercialización o de producción en serie.