

**McCall's**

**M8509**



Designed and printed in USA

Scan QR code for a Sew-Along video tutorial.  
Scannez le code QR pour un didacticiel vidéo de couture.



Average

**MISSES' TOPS**

**Suggested Fabrics:** Dupioni, Sateen, Satin, Taffeta. **Contrast C:** Tulle. **Lining:** Lining Fabrics.

**Interfacing:** Lightweight Fusible.

**Notions:** A, B, C: One 14" (36cm) invisible zipper.

Sizes	6	8	10	12	14	16	18	20	22	24
European	32	34	36	38	40	42	44	46	48	50

**BODY MEASUREMENTS: Select pattern size based on body measurements**

<b>Bust</b>	30½	31½	32½	34	36	38	40	42	44	46	Ins.
<b>Waist</b>	23	24	25	26½	28	30	32	34	37	39	"
<b>Hip-9" below waist</b>	32½	33½	34½	36	38	40	42	44	46	48	"
<b>Back-neck to waist</b>	15½	15¾	16	16¼	16½	16¾	17	17¼	17½	17¾	"

<b>Lining A,B,C</b>	45"***	¾	¾	¾	¾	½	½	½	½	½	Yd.
<b>Interfacing A,B,C</b>	20"	¾	¾	¾	¾	¾	¾	1	1	1	"

<b>Top A</b>	60"*	1¼	1¼	1¾	1¾	1¾	1¾	1¾	1¾	1¾	Yds.
--------------	------	----	----	----	----	----	----	----	----	----	------

<b>Top B</b>	60"*	1¾	1¾	1¾	1¾	1¾	1¾	1¾	1¾	2	Yds.
--------------	------	----	----	----	----	----	----	----	----	---	------

<b>Top C</b>	60"*	1¾	1¾	1¾	1¾	1¾	1¾	1¾	1¾	1¾	Yds.
--------------	------	----	----	----	----	----	----	----	----	----	------

**Contrast C (Front, Middle Front, Middle Side Front, Side Front, Back, Middle Back, Middle Side Back, Side Back, Upper Bodice Front, Bodice Front Overlay, Bodice Back Overlay, Shoulder Strap)**

	60"*	1½	1½	1½	1½	1¾	1¾	1¾	1¾	2	2	Yds.
--	------	----	----	----	----	----	----	----	----	---	---	------

**FINISHED GARMENT MEASUREMENTS (Includes Design and Wearing Ease)**

<b>A,B,C Bust</b>	33	34	35	36½	38½	40½	42½	44½	46½	48½	Yds.
-------------------	----	----	----	-----	-----	-----	-----	-----	-----	-----	------

<b>A,B,C Waist</b>	25	26	27	28½	30½	32½	34½	36½	38½	40½	"
--------------------	----	----	----	-----	-----	-----	-----	-----	-----	-----	---

**Finished back length from base of neck**

<b>Top A</b>	23¾	23¾	24	24¼	24½	24¾	25	25¼	25½	25¾	Yds.
--------------	-----	-----	----	-----	-----	-----	----	-----	-----	-----	------

<b>Top B,C</b>	27¾	27¾	28	28¼	28½	28¾	29	29¼	29½	29¾	"
----------------	-----	-----	----	-----	-----	-----	----	-----	-----	-----	---

\*with nap \*\*without nap

Moins Facile

**HAUTS POUR JEUNES FEMMES**

**Tissus Conseillés:** Dupioni, Satinette, Satin, Taffetas. **Contraste C:** Tulle. **Doubleure:** Tissus à doubleure. **Entoilage:** Thermocollant léger.

**Merceria:** A, B, C: 1 fermeture à glissière invisible de 36cm.

Tailles	6	8	10	12	14	16	18	20	22	24
Françaises	34	36	38	40	42	44	46	48	50	52
Européen	32	34	36	38	40	42	44	46	48	50

**MESURES DU CORPS: Choisissez la taille du patron basée sur les mesures du corps**

<b>Poitrine</b>	78	80	83	87	92	97	102	107	112	117	cm
-----------------	----	----	----	----	----	----	-----	-----	-----	-----	----

<b>Taille</b>	58	61	64	67	71	76	81	87	94	99	"
---------------	----	----	----	----	----	----	----	----	----	----	---

**Hanches (23cm au-dessous de la taille)**

	83	85	88	92	97	102	107	112	117	122	cm
--	----	----	----	----	----	-----	-----	-----	-----	-----	----

<b>Dos du cou à la taille</b>	39.5	40	40.5	41.5	42	42.5	43	44	44.5	45	"
-------------------------------	------	----	------	------	----	------	----	----	------	----	---

<b>Doubleure A,B,C</b>	115cm**	0.3	0.3	0.3	0.3	0.5	0.5	0.5	0.5	0.5	m
------------------------	---------	-----	-----	-----	-----	-----	-----	-----	-----	-----	---

<b>Entoilage A,B,C</b>	51cm	0.7	0.7	0.7	0.7	0.7	0.7	0.7	0.9	0.9	"
------------------------	------	-----	-----	-----	-----	-----	-----	-----	-----	-----	---

<b>Haut A</b>	150cm*	1.1	1.1	1.1	1.1	1.1	1.3	1.3	1.3	1.3	m
---------------	--------	-----	-----	-----	-----	-----	-----	-----	-----	-----	---

<b>Haut B</b>	150cm*	1.6	1.6	1.6	1.6	1.6	1.6	1.6	1.7	1.7	1.8	m
---------------	--------	-----	-----	-----	-----	-----	-----	-----	-----	-----	-----	---

<b>Haut C</b>	150cm*	1.6	1.6	1.6	1.6	1.6	1.6	1.7	1.7	1.7	1.7	m
---------------	--------	-----	-----	-----	-----	-----	-----	-----	-----	-----	-----	---

**Contraste C (Devant, Milieu devant, Milieu découpe devant, Découpes devant, Dos, Milieu dos, Milieu découpe dos, Découpes dos, Corsage devant supérieur, Pièce superposée du corsage devant, Pièce superposée du corsage dos, Bretelle d'Épau)**

	150cm*	1.5	1.5	1.5	1.5	1.6	1.6	1.6	1.7	1.8	1.8	m
--	--------	-----	-----	-----	-----	-----	-----	-----	-----	-----	-----	---

**MESURES DES VÊTEMENTS FINI (Motif et aisance de port compris)**

<b>A,B,C Poitrine</b>	84	86	89	93	98	103	108	113	118	123	cm
-----------------------	----	----	----	----	----	-----	-----	-----	-----	-----	----

<b>A,B,C Taille</b>	25	26	27	28½	30½	32½	34½	36½	38½	40½	"
---------------------	----	----	----	-----	-----	-----	-----	-----	-----	-----	---

**Longueur finie – dos, votre nuque à l'ourlet**

<b>Haut A</b>	60	61	61	62	62	63	64	64	65	65	cm
---------------	----	----	----	----	----	----	----	----	----	----	----

<b>Haut B,C</b>	70	71	71	72	72	73	74	74	75	76	"Nu
-----------------	----	----	----	----	----	----	----	----	----	----	-----

\*avec sens \*\*sans sens



A



B



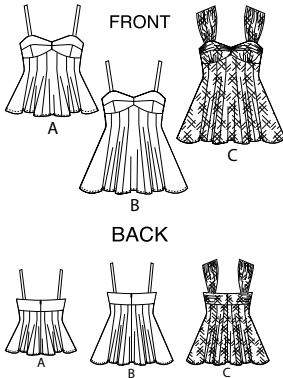
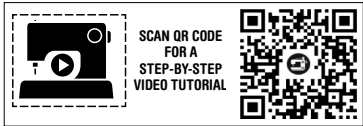
C



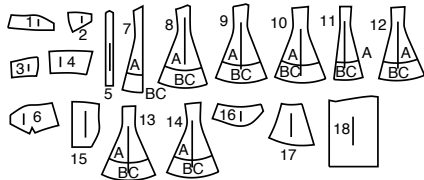
B



C



18 PATTERN PIECES



- 1 Upper Bodice Front-A,B,C
- 2 Bodice Front-A,B,C
- 3 Bodice Side Front-A,B,C
- 4 Bodice Back-A,B,C
- 5 Shoulder Strap-A,B
- 6 Bodice Front Lining-A,B,C
- 7 Front-A,B,C
- 8 Middle Front-A,B,C
- 9 Middle Side Front-A,B,C
- 10 Side Front-A,B,C
- 11 Back-A,B,C
- 12 Middle Back-A,B,C
- 13 Middle Side Back-A,B,C
- 14 Side Back-A,B,C
- 15 Upper Bodice Front-C
- 16 Bodice Front Overlay-C
- 17 Bodice Back Overlay-C
- 18 Shoulder Strap-C

**PATTERN MARKINGS**  
**GRAINLINE:** Place on straight grain of fabric, parallel to selvage or fold.  
**FOLDLINE:** Place line on fold of fabric.  
**BUTTONHOLE MARKING:** Indicates exact length and placement of buttonholes.  
**BUTTON MARKING:** Indicates button placement.  
**NOTCHES AND SYMBOLS:** For matching seams and construction details.  
 Indicates the Bustline, Waistline, Hip and/or Biceps. Measurements refer to circumference of Finished Garment (Body Measurement + Wearing Ease + Design Ease). Adjust pattern if necessary. The measurement excludes pleats, tucks, darts and seam allowances.  
**SEAM ALLOWANCE:** 5/8" (1.5cm) included unless otherwise indicated, but not printed on tissue.

**ADJUST IF NECESSARY**  
 Lengthen or Shorten at adjustment lines (==) or where indicated on pattern. If substantial length is added, you may need to purchase additional fabric.  
**TO SHORTEN:** Crease along adjustment line. Make a fold half the amount needed. Tape in place.  
**TO LENGTHEN:** Slash between adjustment lines. Spread amount as needed, keeping edges parallel. Tape over paper.  
 When Alteration lines are not on tissue, lengthen or shorten at lower edge.

**CUTTING AND MARKING**  
**SHRINK FABRIC** if not labeled pre-shrunk. Press.  
**CIRCLE LAYOUT** for View, Size, Fabric Width.  
 Use **WITH NAP** layout for fabrics with one-way designs, nap, pile or surface shading. Because most knits have surface shading, a with nap layout is used.  
 For **DOUBLE THICKNESS (WITH FOLD)** - fold fabric with right sides together.  
**\* DOUBLE THICKNESS (WITHOUT FOLD)** - For fabrics with nap, fold fabric crosswise, right sides together. Mark as shown. Cut along crosswise fold of fabric (A). Turn upper layer 180° so arrows go in same direction and place over lower layer, right sides together (B).  
 For **SINGLE THICKNESS** - place fabric right side up. (For Fur Pile fabrics, place pile side down.)

★ Cut other pieces first, allowing enough fabric to cut this piece. Open fabric. For "Cut 1" pieces, cut piece once on single layer of fabric with piece face up on right side of fabric.  
 Pattern may have cutting lines for several sizes. Select the proper cutting line or pattern pieces for your size.  
 Before **CUTTING** place all pieces on fabric according to layout. Pin. (Layouts show approximate position of pattern pieces; position may vary according to your pattern size.) Cut **ACCURATELY**, cutting notches outward.  
 Before removing pattern, **TRANSFER MARKINGS** and lines of construction to Wrong Side of fabric, using the Pin and Chalk Pencil method or Tracing Paper and Dressmaker Wheel. Markings needed on right side of fabric should be thread traced.  
**NOTE:** Broken-line boxes (a| b| c|) in layouts represent pieces cut by measurements provided.

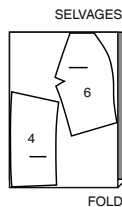
**CUTTING LAYOUTS**

RIGHT SIDE OF PATTERN	WRONG SIDE OF PATTERN	RIGHT SIDE OF FABRIC	WRONG SIDE OF FABRIC
-----------------------	-----------------------	----------------------	----------------------

**LINING A, B, C**

USE PIECES: 4 6

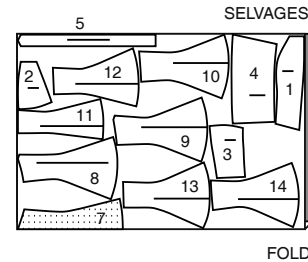
45" (115 CM)  
WITHOUT NAP  
ALL SIZES



**TOP A**

USE PIECES: 1 2 3 4 5 7 8 9 10 11 12 13 14

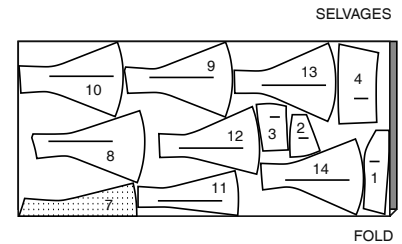
60" (150 CM)  
WITH NAP  
ALL SIZES



**TOP C**

USE PIECES: 1 2 3 4 7 8 9 10 11 12 13 14

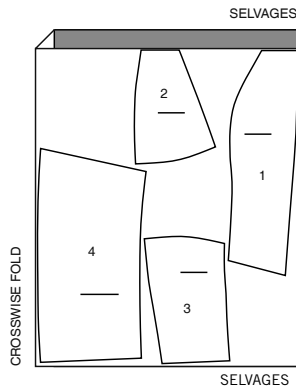
60" (150 CM)  
WITH NAP  
ALL SIZES



**INTERFACING A, B, C**

USE PIECES: 1 2 3 4

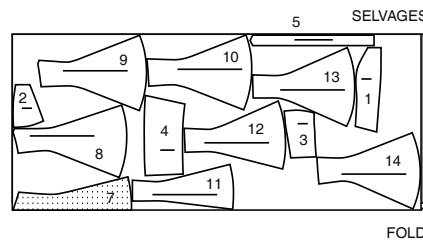
20" (51 CM)  
WITHOUT NAP  
ALL SIZES



**TOP B**

USE PIECES: 1 2 3 4 5 7 8 9 10 11 12 13 14

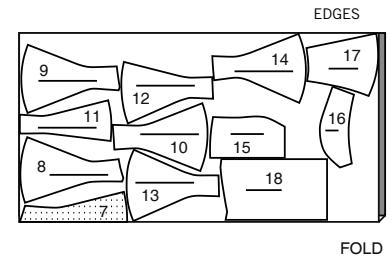
60" (150 CM)  
WITH NAP  
ALL SIZES



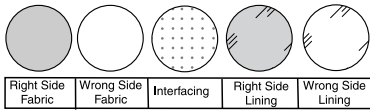
**CONTRAST C**

USE PIECES: 7 8 9 10 11 12 13 14 15 16 17 18

72" (183 CM) TULLE  
WITHOUT NAP  
ALL SIZES

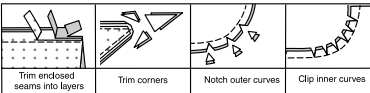


**SEWING INFORMATION**  
FABRIC KEY



**SEAM ALLOWANCES**

Use 1/4" (6mm) seam allowances unless otherwise indicated.



**PIN AND FIT**

Pin or baste seams, **RIGHT SIDE TOGETHER**, matching notches. Fit garment before stitching major seams.

**PRESS**

Press seam allowances flat; then open unless otherwise stated. Clip where necessary so they lie flat.

**GLOSSARY**

Sewing terms appearing in **BOLD TYPE** in Sewing Instructions are explained below.

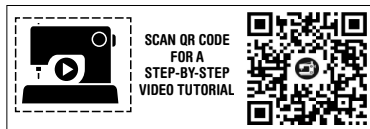
**GATHER** - Stitch along seamline and again 1/4" (6mm) away in seam allowance, using long machine stitches. Pull thread ends when adjusting to fit.

**NARROW HEM** - Turn in hem; press, easing in fullness if necessary. Open out hem. Turn in again so raw edge is along crease; press. Turn in along crease; stitch.

**UNDERSTITCH** - Open out facing or underside of garment; stitch to seam allowance close to seam.

**PATTERN PIECES WILL BE IDENTIFIED BY NUMBERS THE FIRST TIME THEY ARE USED.**

**STITCH SEAMS WITH RIGHT SIDES TOGETHER UNLESS OTHERWISE STATED.**

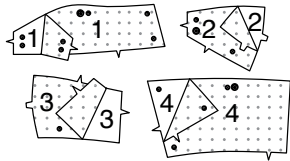


**TOP A, B, C**

**NOTE:** The first view mentioned will be shown, unless otherwise indicated.

**INTERFACING**

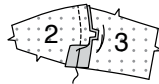
1. Fuse **INTERFACING** to **WRONG** sides of each matching **FABRIC** section, following manufacturer's instructions.



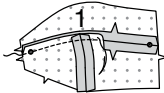
**BODICE**

**Views A, B**

2. Stitch **BODICE FRONT** (2) to **BODICE SIDE FRONT** (3) matching double notches.

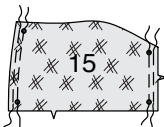


3. Stitch **UPPER BODICE FRONT** (1) to bodice front matching notches and small dots.



**View C**

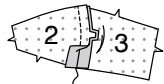
4. **GATHER** center front and side edges of **UPPER BODICE FRONT** (Overlay) (15) between small dots.



5. With **RIGHT** sides up, pin overlay to **UPPER BODICE FRONT** (1) matching notches, small dots, having raw edges even. Adjust gathers. Baste.



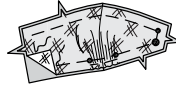
6. Stitch **BODICE FRONT** (2) to **BODICE SIDE FRONT** (3) matching double notches.



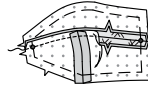
7. **GATHER** lower edge of **BODICE FRONT OVERLAY** (16) between small dots.



8. With **RIGHT** sides up, pin bodice front overlay to bodice front matching notches and small and large dots, having raw edges even. Adjust gathers. Baste.



9. Stitch upper front to bodice front matching notches and small dots.



10. **GATHER** side edge of **BODICE BACK OVERLAY** (17) between small dots.



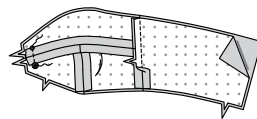
11. With **RIGHT** sides up, pin overlay to **BODICE BACK** (4) matching notches and small dots, having raw edges even. Adjust gathers. Baste.



**CONTINUE AS FOLLOWS FOR VIEWS A, B, C**

12. Stitch bodice front to bodice back at sides.

Stitch bodice together at center front between large and small dots.



**STRAPS**

**Views A, B**

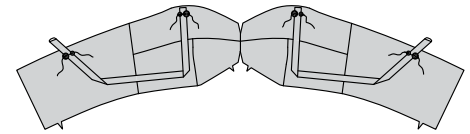
13. Fold **SHOULDER STRAP** (5) in half, lengthwise, with **RIGHT** sides together.

Stitch in 3/8"(1cm) seam, leaving ends open.



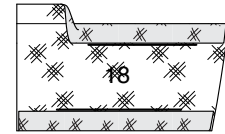
14. Turn strap **RIGHT** side out. Press.

On **OUTSIDE**, pin front end of strap to upper bodice front and back end of strap to bodice back, matching large and small dots. Baste.

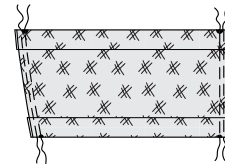


**View C**

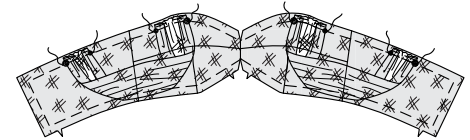
15. Turn long edges of **SHOULDER STRAP** (18) to **WRONG** side along foldlines. Press.



16. **GATHER** ends of strap between large and small dots.

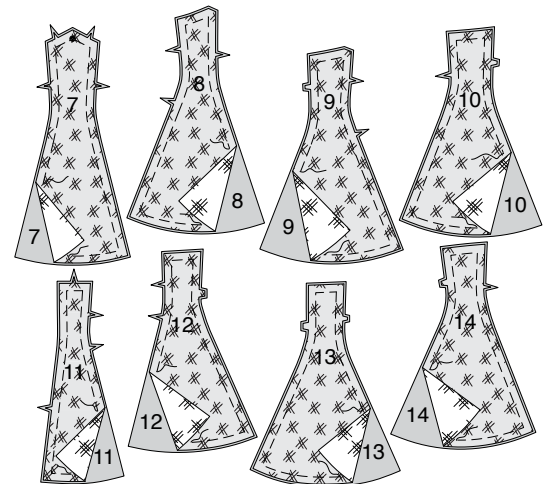


17. On **OUTSIDE**, pin front end of strap to upper bodice front and back end of strap to bodice back matching large and small dots. Adjust gathers. Baste.

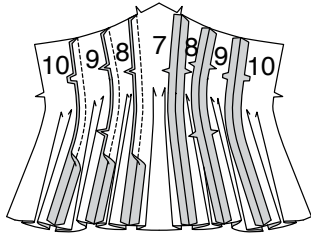


**FRONT AND BACK**

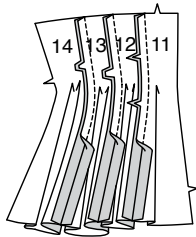
18. **View C:** Pin **WRONG** side of each **CONTRAST FRONT** (7), **MIDDLE FRONT** (8), **MIDDLE SIDE FRONT** (9), **SIDE FRONT** (10), **BACK** (11), **MIDDLE BACK** (12), **MIDDLE SIDE BACK** (13), and **SIDE BACK** (14) sections to **RIGHT** side of each matching **FABRIC** section, having raw edges even. Baste. Handle as one layer.



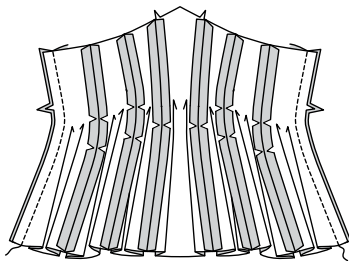
**19.** For front, pin MIDDLE FRONT (8) sections to side edges of FRONT (7) matching notches. Stitch. Stitch MIDDLE SIDE FRONT (9) to side edges of middle front, matching notches. Stitch SIDE FRONT (10) to side edges of middle side front matching double notches. Clip curves.



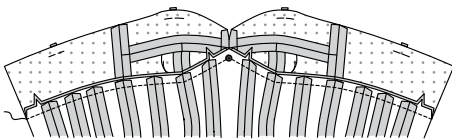
**20.** For back, pin each MIDDLE BACK (12) section to BACK (11), matching notches. Stitch. Stitch MIDDLE SIDE BACK (13) sections to side edges of middle back matching triple notches. Stitch SIDE BACK (14) sections to side edges of middle side back matching double notches.



**21.** Stitch back to front at sides.

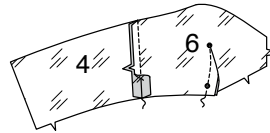


**22.** Pin front and back to bodice, RIGHT sides together, matching notches, center fronts, side seams, having back edges even. Stitch.

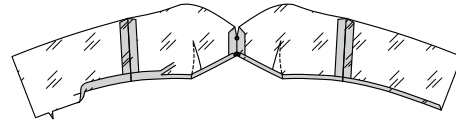


**LINING**

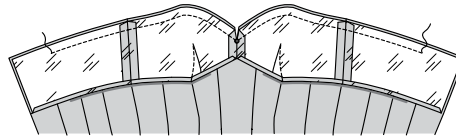
**23.** To stitch dart seam in BODICE FRONT LINING (6), with RIGHT sides together, bring broken lines together, matching small dots. Stitch along broken line from raw edge to point. Press dart seam toward center front.



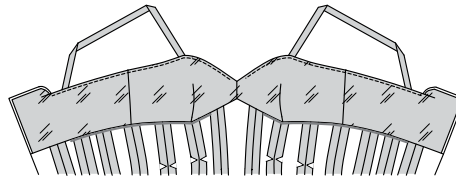
**24.** Stitch center front seam in bodice lining between large and small dots. Turn in 5/8" (1.5cm) seam allowance on lower edge of lining. Press. Trim pressed edge to 3/8" (1cm).



**25.** Pin lining to bodice at upper edge, matching center fronts, side seams, and symbols. Stitch to within 3" (7.5cm) of back opening edges. Trim.



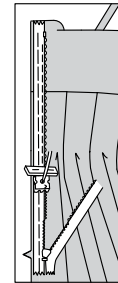
**26.** UNDERSTITCH lining as far as possible. Do not understitch unstitched seam allowances. Turn lining to inside. Press.



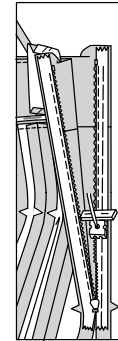
**ZIPPER**

**NOTE:** Stitch the invisible zipper using an invisible zipper foot. If the zipper is longer than the zipper opening, adjust after the zipper is inserted.

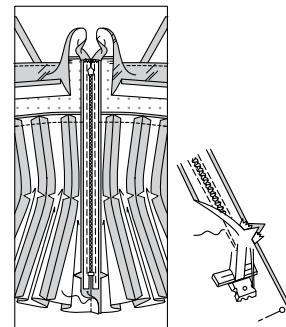
**27.** Open the zipper and press the tape using a cool iron. On OUTSIDE, pin RIGHT side of the zipper face down on the RIGHT side of the zipper opening, keeping lining free. Have the coil along the seam line, the tape within the seam allowance and the top stop 3/4" (2cm) below upper edge, as shown. Hand-baste along center of the tape. Position zipper foot at the top of the zipper with RIGHT groove of the foot over coil. Stitch along tape to the notch. Back-stitch to reinforce.



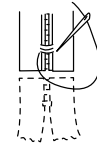
**28.** Pin the remaining half of the zipper to the LEFT side of the zipper opening in same manner. Make sure the upper and lower edges of the garment are even. Hand-baste along the center of the tape. Position zipper foot at the top of the zipper with LEFT groove over the coil. Stitch along tape to the notch. Back-stitch to reinforce.



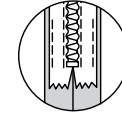
**29.** Close zipper and check that it is invisible from the OUTSIDE. Pull the free ends of the zipper tape away from the seam allowance. Pin remaining center back seam together below zipper. Position zipper foot all the way to the LEFT so the needle goes down through the outer notch of the foot. Start stitching seam 1/4" (6mm) above lowest stitch and slightly to the LEFT. Stitch remainder of seam.



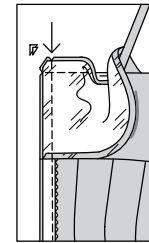
**30.** If the zipper is longer than the opening, using a strong thread, hand-sew a few small stitches across ends of coils at end of opening. Trim away lower end of zipper tape to within 5/8" (1.5cm) of hand-stitches.



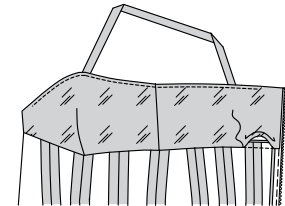
**31.** If you prefer, open out each seam allowance at end of zipper and stitch tape to seam allowance.



**32.** Open out back opening edges of top, rolling the zipper teeth away from the opening edge. Turn back lining to OUTSIDE. With RIGHT sides together, pin back and back neck edges of top and lining together. Stitch remaining back neck edges, connecting to previous stitching. Trim neck seam. Stitch across lining 1/2" (1.3cm) from back edges, keeping zipper teeth free. Trim corner. Do not trim center back edges. UNDERSTITCH neck edge of lining as far as possible.

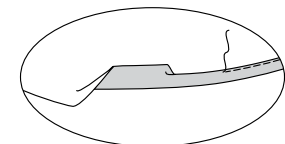


**33.** Turn lining to inside, turning straps out, press. SLIPSTITCH pressed lower edge of lining over seam.



**FINISHING**

**34.** Make a 5/8" (1.5cm) NARROW HEM on lower edge of top.





# Congrats!

You've completed your sewing adventure

---

**SHARE  
YOUR** LOOK



Post your pattern and tag us  
[@simplicity\\_creative\\_group](#) and [#simplicitypatterns](#)  
for a chance to be featured on our social media.

Look for more PDF patterns at [simplicity.com](https://www.simplicity.com)

Have a question or need help with your sewing project call us at  
1-800-782-0323

**McCall's**  
by **design**<sub>group</sub>

McCall's ©2024 a division of IG Design Group Americas Inc. • Atlanta, GA 30342 USA [www.thedesigngroup.com](http://www.thedesigngroup.com) • All Rights Reserved. [www.mccall.com](http://www.mccall.com) • Made in the U.S.A. Fabriqué aux États-Unis.

To be used for individual private home use only and not for commercial or manufacturing purposes. • A usage privé seulement et non à des fins commerciales ou de production en série. • Para uso privado solamente, no se puede utilizar con propósitos de comercialización o de producción en serie.