

**McCall's**

M8508



Designed and  
printed in USA

Average

**MISSSES' DRESS WITH SLEEVE VARIATIONS**

**Suggested Fabrics:** Cotton Blends, Denim, Linen, Poplin. **Interfacing:** Lightweight Fusible.

**Notions: A,B:** Eight  $\frac{5}{8}$ " (1.5cm) buttons. **Also for A:** One pkg. of  $\frac{1}{2}$ " (1.3cm) single fold bias tape. **C:** Twelve  $\frac{5}{8}$ " (1.5cm) buttons.

Sizes	8	10	12	14	16	18	20	22	24	26
European	34	36	38	40	42	44	46	48	50	52

**BODY MEASUREMENTS: Select pattern size based on body measurements**

<b>Bust</b>	31½	32½	34	36	38	40	42	44	46	48	Ins.
<b>Waist</b>	24	25	26½	28	30	32	34	37	39	41	"
<b>Hip-9" below waist</b>	33½	34½	36	38	40	42	44	46	48	50	"
<b>Back-neck to waist</b>	15¾	16	16¼	16½	16¾	17	17¼	17½	17¾	18	"

<b>Dress A</b>	45**	2¾	2¾	2¾	2¾	2¾	2¾	2¾	2¾	2¾	3	Yds.
	60**	2	2	2	2	2	2	2½	2½	2½	2½	"

**Interfacing A,B - 20" - 1½ yds.**

<b>Dress B</b>	45**	2¾	2¾	2¾	2¾	2¾	3	3¾	3¾	3¾	3¾	Yds.
	60**	2	2	2	2½	2½	2½	2¾	2½	2½	2½	"

<b>Dress C</b>	45**	3	3½	3½	3½	3½	3½	3¾	3¾	3¾	3¾	Yds.
	60**	2¾	2¾	2¾	2¾	2½	2½	2¾	2¾	2¾	3	"

**Interfacing - 20" - 1½ yds.**

**FINISHED GARMENT MEASUREMENTS (Includes Design and Wearing Ease)**

**A,B,C Bust** 39 40 41½ 43½ 45½ 47½ 49½ 51½ 53½ 55½ Ins.

**A,B,C Waist** 42½ 43½ 45 47 49 51 53 55 57 59 "

**Width, lower edge**

**Dress A,B,C** 51 52 53½ 55½ 57½ 59½ 61½ 63½ 65½ 67½ Ins.

**Finished back length from base of neck**

**Dress A,B,C** 33¾ 34 34¼ 34½ 34¾ 35 35¼ 35½ 35¾ 36 Ins.

\*with nap \*\*without nap

Moins Facile

**ROBE AVEC VARIATIONS DE MANCHES POUR JEUNES FEMMES**

**Tissus Conseillés:** Cotonnades, Denim, Toile de lin, Popeline. **Entoilage:** Thermocollant léger.

**Merцерie: A,B:** 8 boutons de 1.5cm. **Aussi pour A:** 1 paquet de ruban de biais simple de 1.3cm. **C:** 12 boutons de 1.5cm.

Tailles	8	10	12	14	16	18	20	22	24	26
Françaises	36	38	40	42	44	46	48	50	52	54
Européen	34	36	38	40	42	44	46	48	50	52

**MESURES DU CORPS: Choisissez la taille du patron basée sur les mesures du corps**

<b>Poitrine</b>	80	83	87	92	97	102	107	112	117	122	cm
<b>Taille</b>	61	64	67	71	76	81	87	94	99	104	"

**Hanches (23cm au-dessous de la taille)**

	85	88	92	97	102	107	112	117	122	127	cm
<b>Dos du cou à la taille</b>	40	40.5	41.5	42	42.5	43	44	44.5	45	46	"

<b>Robe A</b>	115cm*	2.2	2.2	2.2	2.6	2.6	2.6	2.6	2.6	2.7	m
	150cm*	1.8	1.8	1.8	1.8	1.8	1.8	1.9	1.9	1.9	"

**Entoilage A,B - 51cm - 1.0m**

<b>Robe B</b>	115cm*	2.4	2.5	2.5	2.6	2.6	2.6	3.1	3.1	3.1	m
	150cm*	1.8	1.8	1.8	1.9	1.9	1.9	2.2	2.2	2.3	"

<b>Robe C</b>	115cm*	2.7	2.7	2.9	2.9	3.0	3.2	3.3	3.4	3.4	m
	150cm*	2.2	2.2	2.2	2.2	2.2	2.3	2.6	2.6	2.6	"

**Entoilage - 51cm - 1.1m**

**MESURES DES VÊTEMENTS FINI (Motif et aisance de port compris)**

**A,B,C Poitrine** 99 102 105 110 116 121 126 131 136 141 cm

**A,B,C Taille** 108 110 116 119 124 130 135 140 145 150 "

**Largeur à l'ourlet**

**Robe A,B,C** 130 132 136 141 146 151 156 161 166 171 cm

**Longueur finie - dos, votre nuque à l'ourlet**

**Robe A,B,C** 86 86 87 88 88 89 90 90 91 91 cm

\*avec sens \*\*sans sens



A



B



C

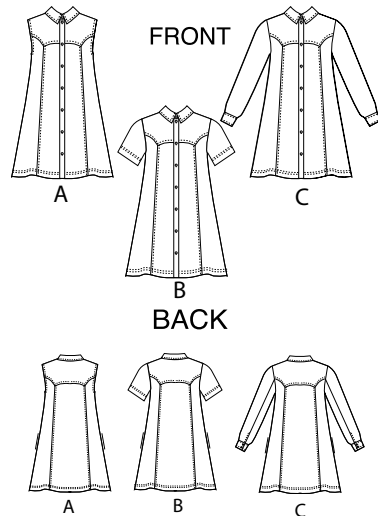
M8508

Page 1 of 4

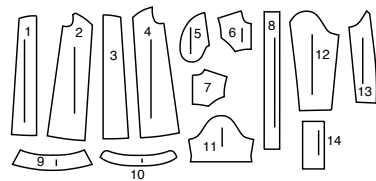
McCall's®

English

1-800-782-0323

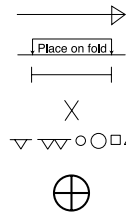


## 14 PATTERN PIECES



- 1 Front-A,B,C
- 2 Side Front-A,B,C
- 3 Back-A,B,C
- 4 Side Back-A,B,C
- 5 Pocket-A,B,C
- 6 Yoke Front-A,B,C
- 7 Yoke Back-A,B,C
- 8 Front Band-A,B,C
- 9 Collar-A,B,C
- 10 Collar Band-A,B,C
- 11 Sleeve-B
- 12 Upper Sleeve-C
- 13 Undersleeve-C
- 14 Cuff-C

## PATTERN MARKINGS



**GRAINLINE:** Place on straight grain of fabric, parallel to selvage or fold.

**FOLDLINE:** Place line on fold of fabric.

**BUTTONHOLE MARKING:** Indicates exact length and placement of buttonholes.

**BUTTON MARKING:** Indicates button placement.

**NOTCHES AND SYMBOLS:** For matching seams and construction details.

Indicates the Bustline, Waistline, Hip and/or Biceps. Measurements refer to circumference of Finished Garment (Body Measurement + Wearing Ease + Design Ease). Adjust pattern if necessary. The measurement excludes pleats, tucks, darts and seam allowances.

**SEAM ALLOWANCE:** 5/8" (1.5cm) included unless otherwise indicated, but not printed on tissue.

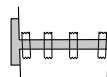
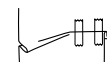
## ADJUST IF NECESSARY

Lengthen or Shorten at adjustment lines (==) or where indicated on pattern. If substantial length is added, you may need to purchase additional fabric.

**TO SHORTEN:** Crease along adjustment line. Make a fold half the amount needed. Tape in place.

**TO LENGTHEN:** Slash between adjustment lines. Spread amount as needed, keeping edges parallel. Tape over paper.

When Alteration lines are not on tissue, lengthen or shorten at lower edge.



## CUTTING AND MARKING

**SHRINK FABRIC** if not labeled pre-shrunk. Press.

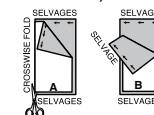
**CIRCLE LAYOUT** for View, Size, Fabric Width.

Use **WITH NAP** layout for fabrics with one-way designs, nap, pile or surface shading. Because most knits have surface shading, a with nap layout is used.

For **DOUBLE THICKNESS (WITH FOLD)** - fold fabric with right sides together.

**\* DOUBLE THICKNESS (WITHOUT FOLD)** - For fabrics with nap, fold fabric crosswise, right sides together. Mark as shown. Cut along crosswise fold of fabric (A). Turn upper layer 180° so arrows go in same direction and place over lower layer, right sides together (B).

For **SINGLE THICKNESS** - place fabric right side up. (For Fur Pile fabrics, place pile side down.)



★ Cut other pieces first, allowing enough fabric to cut this piece. Open fabric. For "Cut 1" pieces, cut piece once on single layer of fabric with piece face up on right side of fabric.

Pattern may have cutting lines for several sizes. Select the proper cutting line or pattern pieces for your size.

Before **CUTTING** place all pieces on fabric according to layout. Pin. (Layouts show approximate position of pattern pieces; position may vary according to your pattern size.) Cut **ACCURATELY**, cutting notches outward.

Before removing pattern, **TRANSFER MARKINGS** and lines of construction to Wrong Side of fabric, using the Pin and Chalk Pencil method or Tracing Paper and Dressmaker Wheel. Markings needed on right side of fabric should be thread traced.

**NOTE:** Broken-line boxes (a! b! c!) in layouts represent pieces cut by measurements provided.

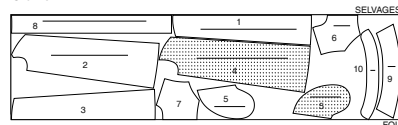
## CUTTING LAYOUTS

RIGHT SIDE OF PATTERN	WRONG SIDE OF PATTERN	RIGHT SIDE OF FABRIC	WRONG SIDE OF FABRIC
-----------------------	-----------------------	----------------------	----------------------

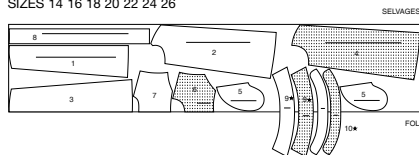
## DRESS A

USE PIECES: 1 2 3 4 5 6 7 8 9 10

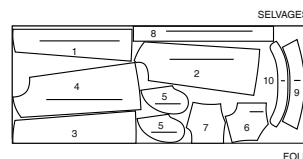
45" (115 CM)  
WITH NAP  
SIZES 8 10 12



45" (115 CM)  
WITH NAP  
SIZES 14 16 18 20 22 24 26



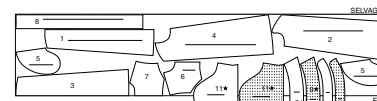
60" (150 CM)  
WITH NAP  
ALL SIZES



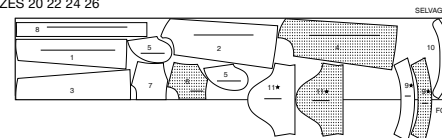
## DRESS B

USE PIECES: 1 2 3 4 5 6 7 8 9 10 11

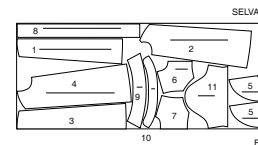
45" (115 CM)  
WITH NAP  
SIZES 8 10 12  
14 16 18



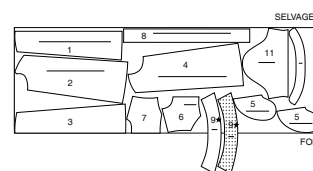
45" (115 CM)  
WITH NAP  
SIZES 20 22 24 26



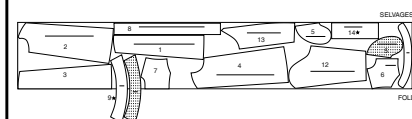
60" (150 CM)  
WITH NAP  
SIZES 8 10 12 14 16 18



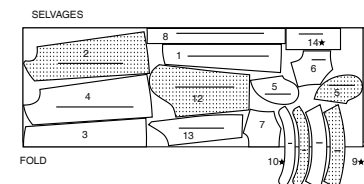
60" (150 CM)  
WITH NAP  
SIZES 20 22 24 26



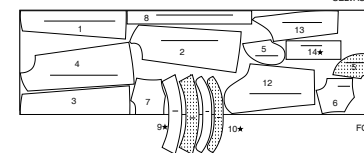
45" (115 CM)  
WITH NAP  
SIZES 18 20 22 24 26



60" (150 CM)  
WITH NAP  
SIZES 8 10 12 14 16 18



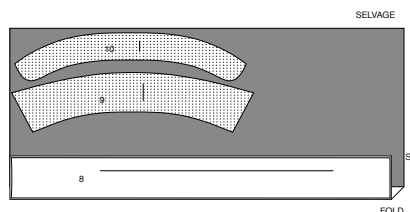
60" (150 CM)  
WITH NAP  
SIZES 20 22 24 26



## INTERFACING A, B

USE PIECES: 8 9 10

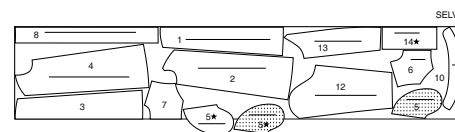
20" (51 CM)  
ALL SIZES



## DRESS C

USE PIECES: 1 2 3 4 5 6 7 8 9 10 12 13 14

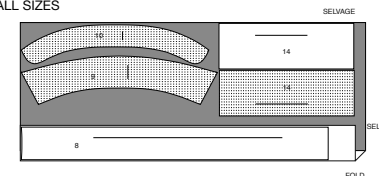
45" (115 CM)  
WITH NAP  
SIZES 8 10 12 14 16



## INTERFACING C C

USE PIECES: 8 9 10 14

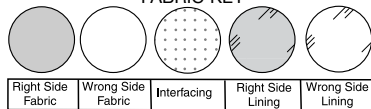
20" (51 CM)  
ALL SIZES



© 2024 McCall's® an IG Design Group Americas, Inc. brand.  
All Rights Reserved. Printed in U.S.A.

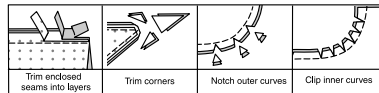
## SEWING INFORMATION

## FABRIC KEY



## SEAM ALLOWANCES

Use 1/4" (6mm) seam allowances unless otherwise indicated.



## PIN AND FIT

Pin or baste seams, **RIGHT SIDE TOGETHER**, matching notches. Fit garment before stitching major seams.

## PRESS

Press seam allowances flat; then open unless otherwise stated. Clip where necessary so they lie flat.

## GLOSSARY

Sewing methods in **BOLD TYPE** have Sewing Tutorial Video available. Scan **QR CODE** to watch videos:

**BIAS ARMHOLE** – See Armholes/Sleeves: “how to sew a bias tape armhole” video.

**EASE/GATHER** – See Gathering: “sewing two row gathers” video.

**EDGE STITCH** – See Machine Stitches: “how to sew an edgestitch” video.

**SET IN SLEEVE** – See Armholes/Sleeves: “sewing a set in sleeve” video.

**STITCH IN THE DITCH** – See Machine Stitches: “how to stitch in the ditch” video.

**TOPSTITCH** – See Machine Stitches: “how to topstitch” video.

**TRIM SEAM** – See Seams: “how to trim, clip and layer seams” video.

**UNDERSTITCH** – See Machine Stitches: “how to understitch” video.

**PATTERN PIECES WILL BE IDENTIFIED BY NUMBERS THE FIRST TIME THEY ARE USED.**

**STITCH 5/8" (1.5CM) SEAMS WITH RIGHT SIDES TOGETHER UNLESS OTHERWISE STATED.**

## SEWING TUTORIALS



SCAN ME

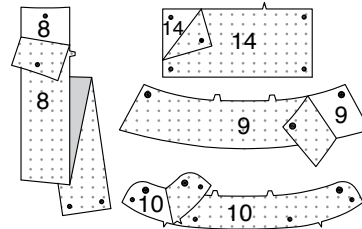
Build your skills viewing short, easy-to-follow videos at [simplicity.com/sewingtutorials](https://www.simplicity.com/sewingtutorials)

## DRESS A, B, C

**NOTE: FOR VIEW A** – Trim 1/4" (6mm) from armhole edges of **SIDE FRONT** (2), **SIDE BACK** (4), **YOKE FRONT** (6), and **YOKE BACK** (7) before stitching seams.

## INTERFACING

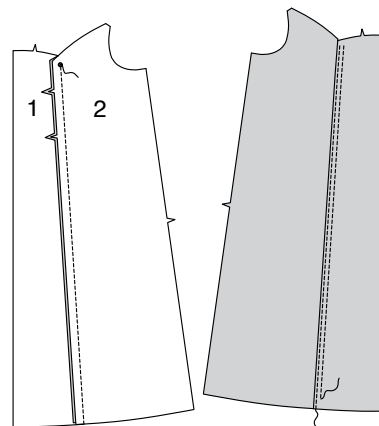
**1.** Pin interfacing to **WRONG** side of **FRONT BAND** (8), **COLLAR** (9), **COLLAR BAND** (10), and additionally for **View C**, **CUFF** (14). Fuse interfacing in place following manufacturer's directions.



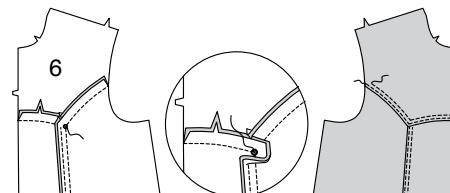
## DRESS

**NOTE:** If a seam is stitched to a dot, end **TOPSTITCHING** and **EDGE STITCHING** at the dot as well.

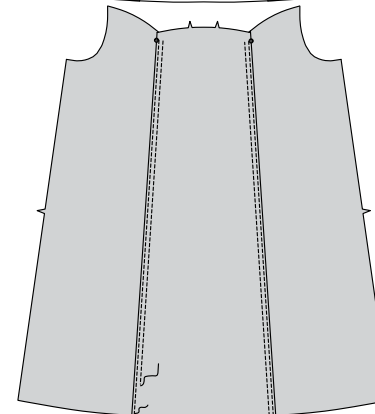
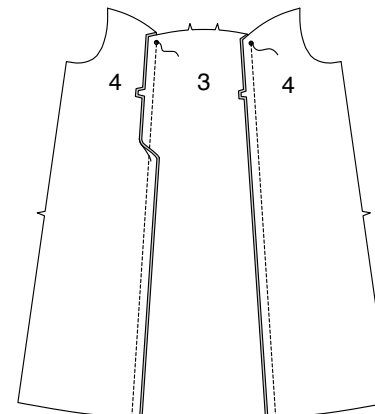
**2.** With **RIGHT** sides together and raw edges even, pin **FRONT** (1) to **SIDE FRONT** (2) at side front edges, matching small dots and notches. Stitch from lower edge to small dot, backstitching at dot to reinforce the seam. Press seam toward front. On **OUTSIDE**, **EDGE STITCH** and **TOPSTITCH** front along seam.



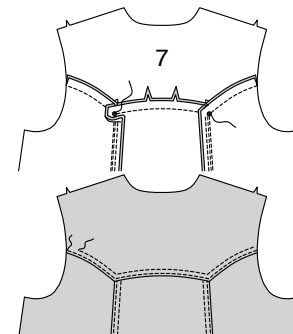
**3.** With **RIGHT** sides together and raw edges even, pin lower edge of **YOKE FRONT** (6) to upper edge of front, matching small dots at notches. Stitch, breaking stitching at small dot. Press seam toward yoke. On **OUTSIDE**, **EDGE STITCH** and **TOPSTITCH** yoke along seam.



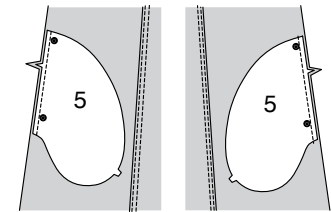
**4.** With **RIGHT** sides together and raw edges even, pin **BACK** (3) to **SIDE BACK** (4) at side back edges, matching small dots and notches. Stitch from lower edge to small dot, backstitching at dot to reinforce the seam. Press seam toward back. On **OUTSIDE**, **EDGE STITCH** and **TOPSTITCH** back along seam.



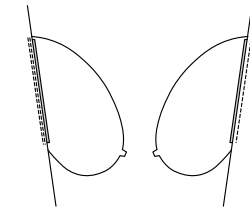
**5.** With **RIGHT** sides together and raw edges even, pin lower edge of **YOKE BACK** (7) to upper edge of back, matching small dots at notches. Stitch, breaking stitching at small dot. Press seam toward yoke. On **OUTSIDE**, **EDGE STITCH** and **TOPSTITCH** yoke along seam, pivoting with needle in fabric at corners.



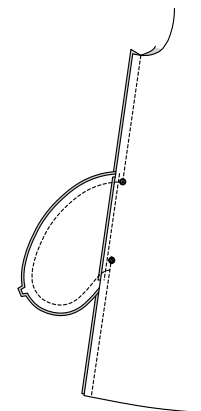
**6.** With **RIGHT** sides together, pin **POCKET** (5) to front and back sections, matching large dots, having raw edges even. Stitch in 3/8" (1cm) seam.



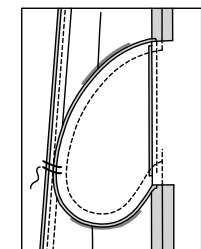
**7. UNDERSTITCH** the front pocket. Press seam toward pocket, pressing pocket out.



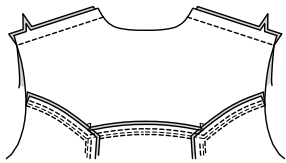
**8.** Pin front to back at side edges, matching large dots. Stitch, leaving an opening between large dots. Stitch pocket edges together between side seam.



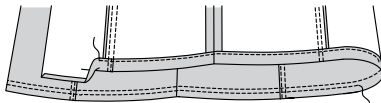
**9.** Clip dress back seam allowance above and below pocket. Press seam open above and below clips. Press pocket toward front. Tack pocket to side front seam allowance.



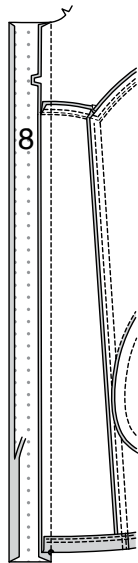
10. Stitch front to back at shoulder edges.



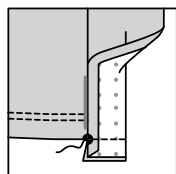
11. Press up 1-3/8" (3.5cm) hem. Turn under raw edge 3/8" (1cm); press. **EDGE STITCH** close to inner pressed edge. **TOPSTITCH** 1/4" (6mm) from hem stitching.



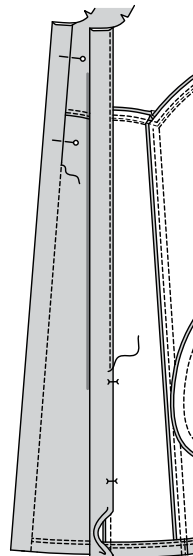
12. Press under 1/2" (1.3cm) on unnotched, long edge of **FRONT BAND (8)**. Trim to 1/4" (6mm). With **RIGHT** sides together and raw edges even, pin front band to front, matching small dots and notches. Stitch. **TRIM SEAM**. Press band out, pressing seam toward band.



13. Turn lower end of band facing to **OUTSIDE** along foldline, matching small dots. Stitch across facing along lower edge. **TRIM SEAM**.

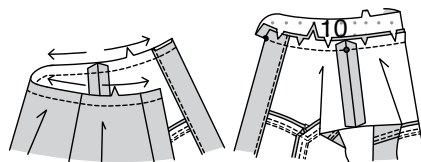


14. Turn facing to **INSIDE** along fold line; press. On **INSIDE**, pin pressed edge of facing over seam, placing pins on **OUTSIDE**. On **OUTSIDE**, **STITCH IN THE DITCH** of the seam, catching in pressed edge of facing on the **INSIDE**.

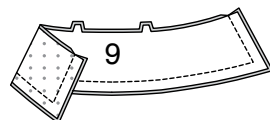


15. Stay-stitch neck edge, by stitching 1/2" (1.3cm) from cut edge in direction of arrows. This stitching stays in permanently to prevent stretching on curved edges. (Shown only in the first illustration.)

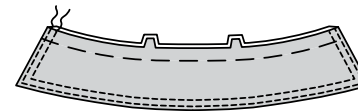
Clip neck edge of dress to staystitching. With **RIGHT** sides together, pin **COLLAR BAND (10)** to neck edge, matching centers back, small dots, and notches, placing inner small dots at shoulder seams. (End of collar extends 5/8" (1.5cm) beyond front edge of garment.) Stitch in a 5/8" (1.5cm) seam. **TRIM SEAM**. Press collar band out, pressing seam toward band.



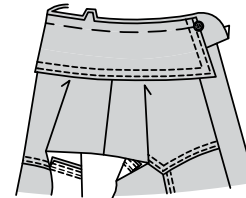
16. With **RIGHT** sides together and raw edges even, stitch facing to **COLLAR (9)**, leaving notched edges open. **TRIM SEAM**.



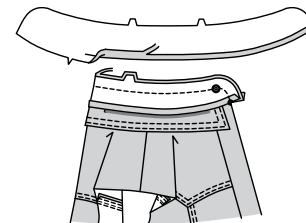
17. Turn collar; press. Baste raw edges together. **EDGE STITCH** and **TOPSTITCH** finished edge.



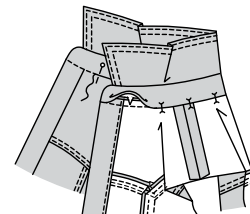
18. With **RIGHT** sides together and raw edges even, pin collar (facing side) to collar band, matching centers back and notches, placing ends at large dots. Baste.



19. Press under 1/2" (1.3cm) on single notched edge of collar band facing. Trim to 1/4" (6mm). With **RIGHT** sides together, pin collar band facing to collar band (over collar), matching centers and small dots. Stitch front and double notched edge. **TRIM SEAM**.

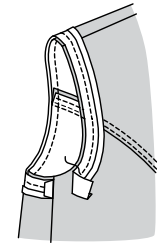


20. Turn collar band facing to **INSIDE**; press. Pin pressed edge of facing over seam, placing pins on **OUTSIDE**. On **OUTSIDE**, **STITCH IN THE DITCH** of the seam, catching in pressed edge of facing on **INSIDE**.

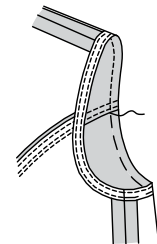


## ARMHOLE A

21. Open out one edge of single fold bias tape. With **RIGHT** sides together, pin tape to armhole edge having raw edges even, turning under and lapping one end at side seam. Stitch in 3/8" (1cm) seam. **TRIM SEAM**.

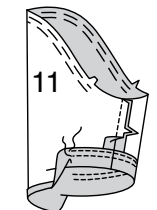


22. **UNDERSTITCH** the tape by pressing tape and seam away from dress and stitching through tape and seam allowances close to seam. Turn tape to **INSIDE**; press. Baste close to inner edge of tape. On **OUTSIDE**, **TOPSTITCH** as basted.



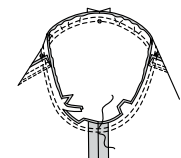
## SLEEVE B

23. To **EASE** top of **SLEEVE (11)** between notches, stitch along seam line and 1/4" (6mm) **INSIDE** seam line, using a long machine-stitch. Stitch underarm seam. Press up 1-3/8" (3.5cm) hem allowance. Turn under raw edge 3/8" (1cm); press. **EDGE STITCH** close to inner pressed edge. **TOPSTITCH** 1/4" (6mm) from hem stitching.



24. To **SET IN SLEEVE**, turn sleeve **RIGHT** side out. Hold dress **WRONG** side out with armhole toward you. With **RIGHT** sides together, pin sleeve to armhole edge with center small dot at shoulder seam, matching underarm seams, notches and remaining small dots. Pull up ease stitches to fit.

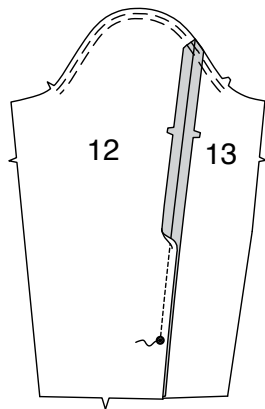
To distribute fullness evenly, slide fabric along bobbin threads until there are no puckers or tucks on the seam line. Baste. Stitch. Stitch again 1/8" (3mm) from first stitching. Trim seam below notches close to stitching. Press only the seam allowance, shrinking out fullness.



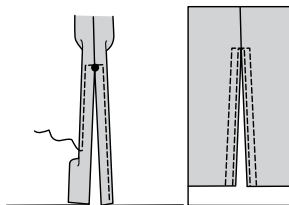
## SLEEVE C

**25.** Pin UPPER SLEEVE (12) to UNDER SLEEVE (13) matching double notched edges. Stitch from armhole edge to large dot, backstitching at dot to reinforce the seam. Press seam open.

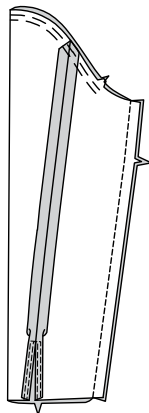
To **EASE** top of sleeve between notches, stitch along seam line and 1/4" (6mm) INSIDE seam line, using a long machine-stitch.



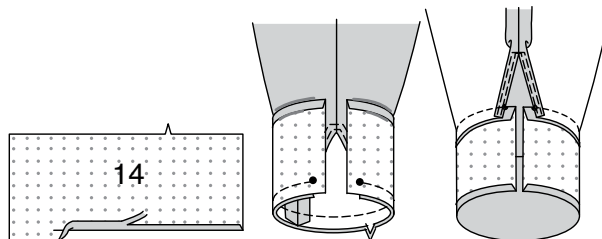
**26.** To form narrow hem on opening edges, press under 5/8" (1.5cm), and tuck under raw edge to meet crease. Press. Stitch close to inner pressed edge, squaring stitching at opening end. On OUTSIDE, **EDGESTITCH** finished opening edges.



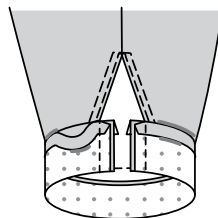
**27.** Stitch underarm edges of sleeve.



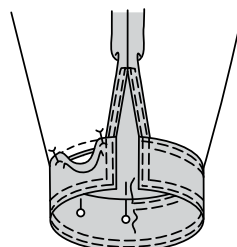
**28.** Press under a generous 1/2" (1.3cm), on unnotched edge of CUFF (14). Trim to 1/4" (6mm). With RIGHT sides together and raw edges even, pin cuff to sleeve, matching small dots and notches. Stitch. **TRIM SEAM.** Press cuff out, pressing seam toward cuff.



**29.** Fold cuff along foldline with RIGHT sides together, matching small dots. Stitch ends. **TRIM SEAM.**

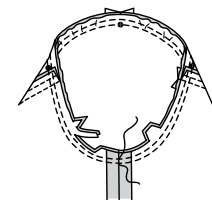


**30.** Turn cuff facing to INSIDE over seam, placing pins on OUTSIDE. On OUTSIDE, **EDGESTITCH** cuff close to seam and finished edges. **TOPSTITCH** cuff 1/4" (6mm) from edgestitching.



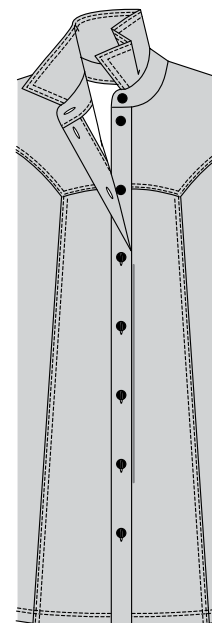
**31.** To **SET IN SLEEVE**, turn sleeve RIGHT side out. Hold dress WRONG side out with armhole toward you. With RIGHT sides together, pin sleeve to armhole edge with center small dot at shoulder seam, matching underarm seams, notches and remaining small dots. Pull up ease stitches to fit.

To distribute fullness evenly, slide fabric along bobbin threads until there are no puckers or tucks on the seam line. Baste. Stitch. Stitch again 1/8" (3mm) from first stitching. Trim seam below notches close to stitching. Press only the seam allowance, shrinking out fullness.

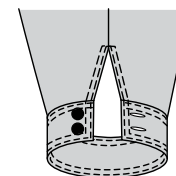


## FINISHING

**32.** Make buttonholes in RIGHT front band and collar band at markings. On OUTSIDE, lap RIGHT front over LEFT matching centers. Sew buttons to LEFT front band and collar band under buttonholes.



**33. FOR VIEW C** - Make buttonholes on cuffs at markings. Sew buttons to cuff at small dots.





# Congrats!

You've completed your sewing adventure

---

## SHARE YOUR LOOK



Post your pattern and tag us  
[@simplicity\\_creative\\_group](#) and [#simplicitypatterns](#)  
for a chance to be featured on our social media.

Look for more PDF patterns at [simplicity.com](https://www.simplicity.com)

Have a question or need help with your sewing project call us at  
1-800-782-0323

**McCall's**  
by **design**<sub>group</sub>

McCall's ©2024 a division of IG Design Group Americas Inc. • Atlanta, GA 30342 USA [www.thedesigngroup.com](http://www.thedesigngroup.com) • All Rights Reserved. [www.mccall.com](http://www.mccall.com) • Made in the U.S.A. Fabriqué aux États-Unis.

To be used for individual private home use only and not for commercial or manufacturing purposes. • A usage privé seulement et non à des fins commerciales ou de production en série. • Para uso privado solamente, no se puede utilizar con propósitos de comercialización o de producción en serie.