

McCall's

M8506



Designed and printed in USA

Easy

MISSES' DRESSES

Suggested Fabrics: Cotton Blends, Gauze, Lightweight Sateen, Poplin, Voile. **Interfacing:** Lightweight Fusible.

Notions: B,C: One pkg. of 1/2" (1.3cm) single fold bias tape.

Sizes	8	10	12	14	16	18	20	22	24	26
European	34	36	38	40	42	44	46	48	50	52

BODY MEASUREMENTS: Select pattern size based on body measurements

Bust	31½	32½	34	36	38	40	42	44	46	48	Ins.
Waist	24	25	26½	28	30	32	34	37	39	41	"
Hip-9" below waist	33½	34½	36	38	40	42	44	46	48	50	"
Back-neck to waist	15¾	16	16½	16½	16¾	17	17¼	17½	17¾	18	"

Dress A 60"* ¾ ¾ 7/8 7/8 7/8 7/8 7/8 7/8 7/8 1 Yd.

Contrast 1 (Middle Front and Back)

60"* 7/8 1 1 1 1 1 1 1 1 1 Yd.

Contrast 2 (Right and Left Lower Front and Back)

60"* - 2¾ yds.

Interfacing 20" ¾ ¾ ¾ ¾ ¾ ¾ ¾ ¾ ¾ ¾ Yd.

Dress B 60"* 3¼ 3¼ 37/8 37/8 37/8 37/8 4 4 4¼ 4¼ Yds.

Interfacing B,C 20" ½ ½ 5/8 5/8 5/8 5/8 5/8 5/8 5/8 5/8 Yd.

Dress C 60"* 4¾ 47/8 47/8 47/8 5 5 5 5½ 5½ 5½ Yds.

FINISHED GARMENT MEASUREMENTS (Includes Design and Wearing Ease)

A,B,C Bust 36½ 37½ 39 41 43 45 47 49 51 53 Ins.

Finished back length from base of neck

Dress A 43¾ 44 44¼ 44½ 44¾ 45 45¼ 45½ 45¾ 46 Ins.

Dress C 56¾ 57 57¼ 57½ 57¾ 58 58¼ 58½ 58¾ 59 "

*with nap **without nap

Facile

ROBES POUR JEUNES FEMMES

Tissus Conseillés: Cotonnades, Gaze, Satinette de poids léger, Popeline, Voile. **Entoilage:** Thermocoollant léger.

Mercerie: B,C: 1 paquet de ruban de biais simple de 1.3cm.

Tailles	8	10	12	14	16	18	20	22	24	26
Françaises	36	38	40	42	44	46	48	50	52	54
Européen	34	36	38	40	42	44	46	48	50	52

MESURES DU CORPS: Choisissez la taille du patron basée sur les mesures du corps

Poitrine	80	83	87	92	97	102	107	112	117	122	cm
Taille	61	64	67	71	76	81	87	94	99	104	"

Hanches (23cm au-dessous de la taille)

	85	88	92	97	102	107	112	117	122	127	cm
--	----	----	----	----	-----	-----	-----	-----	-----	-----	----

Dos du cou à la taille 40 40.5 41.5 42 42.5 43 44 44.5 45 46 "

Robe A 150cm* 0.7 0.7 0.7 0.8 0.8 0.8 0.8 0.8 0.8 0.8 m

Contraste 1 (Milieu devant et dos)

150cm* 0.8 0.8 0.8 0.9 0.9 0.9 0.9 0.9 0.9 0.9 m

Contraste 2 (Droit et gauche devant et dos inférieurs)

150cm* - 1.9m

Entoilage 51cm 0.6 0.7 0.7 0.7 0.7 0.7 0.8 0.8 0.8 0.8 m

Robe B 150cm* 3.4 3.4 3.4 3.5 3.5 3.5 3.7 3.7 3.7 3.8 m

Entoilage B,C 51cm 0.5 0.5 0.5 0.6 0.6 0.6 0.6 0.6 0.6 0.6 m

Robe C 150cm* 4.3 4.5 4.5 4.5 4.6 4.6 4.6 4.6 4.7 4.7 m

MESURES DES VÊTEMENTS FINI (Motif et aisance de port compris)

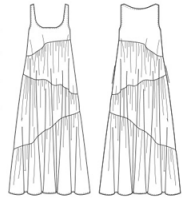
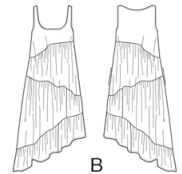
A, B, C Poitrine 93 95 99 104 109 114 119 124 130 135 cm

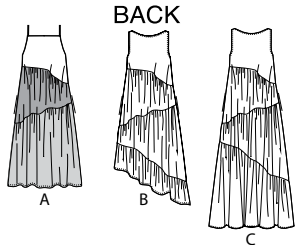
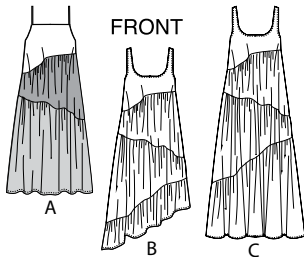
Longueur finie – dos, votre nuque à l'ourlet

Robe A 111 112 112 113 114 114 115 116 116 117 cm

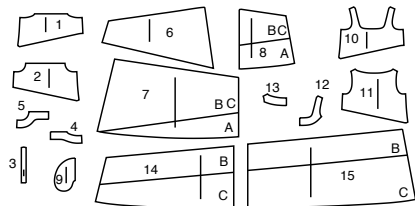
Robe C 144 145 145 146 147 147 148 149 149 150 "

*avec sens **sans sens



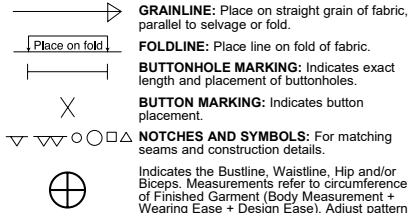


15 PATTERN PIECES



- 1 Upper Front-A
- 2 Upper Back-A
- 3 Shoulder Strap-A
- 4 Front Facing-A
- 5 Back Facing-A
- 6 Middle Front and Back-A,B,C
- 7 Lower Front and Back-A,B,C
- 8 Lower Front and Back-A,B,C
- 9 Pocket-A,B,C
- 10 Upper Front-B,C
- 11 Upper Back-B,C
- 12 Front Facing-B,C
- 13 Back Facing-B,C
- 14 Right Ruffle-B,C
- 15 Left Ruffle-B,C

PATTERN MARKINGS



GRAINLINE: Place on straight grain of fabric, parallel to selvage or fold.
FOLDLINE: Place line on fold of fabric.
BUTTONHOLE MARKING: Indicates exact length and placement of buttonholes.
BUTTON MARKING: Indicates button placement.
NOTCHES AND SYMBOLS: For matching seams and construction details.
 Indicates the Bustline, Waistline, Hip and/or Biceps. Measurements refer to circumference of Finished Garment (Body Measurement + Wearing Ease + Design Ease). Adjust pattern if necessary. The measurement excludes pleats, tucks, darts and seam allowances.
SEAM ALLOWANCE: 5/8" (1.5cm) included unless otherwise indicated, but not printed on tissue.

ADJUST IF NECESSARY

Lengthen or Shorten at adjustment lines (==) or where indicated on pattern. If substantial length is added, you may need to purchase additional fabric.
TO SHORTEN: Crease along adjustment line. Make a fold half the amount needed. Tape in place.
TO LENGTHEN: Slash between adjustment lines. Spread amount as needed, keeping edges parallel. Tape over paper.
 When Alteration lines are not on tissue, lengthen or shorten at lower edge.

CUTTING AND MARKING

SHRINK FABRIC if not labeled pre-shrunk. Press.
CIRCLE LAYOUT for View, Size, Fabric Width.
 Use **WITH NAP** layout for fabrics with one-way designs, nap, pile or surface shading. Because most knits have surface shading, a with nap layout is used.
 For **DOUBLE THICKNESS (WITH FOLD)** - fold fabric with right sides together.
*** DOUBLE THICKNESS (WITHOUT FOLD)** - For fabrics with nap, fold fabric crosswise, right sides together. Mark as shown. Cut along crosswise fold of fabric (A). Turn upper layer 180° so arrows go in same direction and place over lower layer, right sides together (B).
 For **SINGLE THICKNESS** - place fabric right side up. (For Fur Pile fabrics, place pile side down.)
 ★ Cut other pieces first, allowing enough fabric to cut this piece. Open fabric. For "Cut 1" pieces, cut piece once on single layer of fabric with piece face up on right side of fabric.
 Pattern may have cutting lines for several sizes. Before **CUTTING** place all pieces on fabric according to layout. Pin. (Layouts show approximate position of pattern pieces; position may vary according to your pattern size.) Cut **ACCURATELY**, cutting notches outward.
 Before removing pattern, **TRANSFER MARKINGS** and lines of construction to Wrong Side of fabric, using the Pin and Chalk Pencil method or Tracing Paper and Dressmaker Wheel. Markings needed on right side of fabric should be thread traced.
NOTE: Broken-line boxes (a! b! c!) in layouts represent pieces cut by measurements provided.

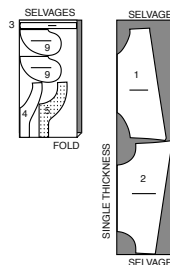
CUTTING LAYOUTS

RIGHT SIDE OF PATTERN	WRONG SIDE OF PATTERN	RIGHT SIDE OF FABRIC	WRONG SIDE OF FABRIC
-----------------------	-----------------------	----------------------	----------------------

DRESS A

USE PIECES: 1 2 3 4 5 9

60" (150 CM)
WITH NAP
ALL SIZES



INTERFACING A

USE PIECES: 4 5

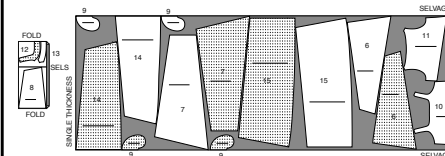
20" (51 CM)
WITHOUT NAP
ALL SIZES



DRESS C

USE PIECES: 6 7 8 9 10 11 12 13 14 15

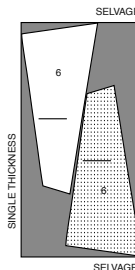
60" (150 CM)
WITH NAP
ALL SIZES



CONTRAST 1 MIDDLE FRONT AND BACK

USE PIECE: 6

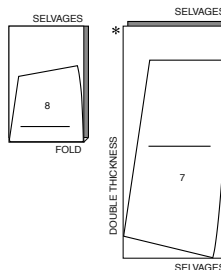
60" (150 CM)
WITH NAP
ALL SIZES



CONTRAST 2 LOWER FRONT AND BACK

USE PIECES: 7 8

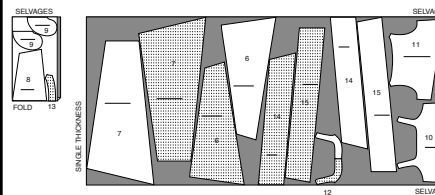
60" (150 CM)
WITH NAP
ALL SIZES



DRESS B

USE PIECES: 6 7 8 9 10 11 12 13 14 15

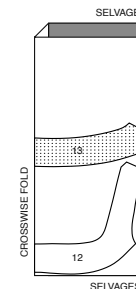
60" (150 CM)
WITH NAP
ALL SIZES



INTERFACING B,C

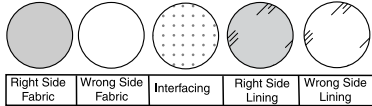
USE PIECES: 12 13

20" (51 CM)
WITHOUT NAP
ALL SIZES



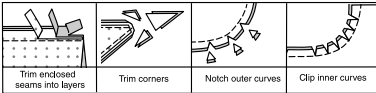
SEWING INFORMATION

FABRIC KEY



SEAM ALLOWANCES

Use 5/8" (1.5cm) seam allowances unless otherwise indicated.



PIN AND FIT

Pin or baste seams, **RIGHT SIDE TOGETHER**, matching notches. Fit garment before stitching major seams.

PRESS

Press seam allowances flat; then open unless otherwise stated. Clip where necessary so they lie flat.

GLOSSARY

Sewing methods in **BOLD TYPE** have Sewing Tutorial Video available. Scan **QR CODE** to watch videos:

FINISH - see **Seams**: "how to finish seam allowances" video.

GATHER - See **Gathering**: "sewing two row gathers" video

NARROW HEM - See **Hems**: "sewing narrow hems" video.

STAYSTITCH - See **Machine Stitches**: "how to do stay-stitching" video.

TACK - See **Hand-Stitching**: "how to tack" video.

TRIM - See **How to Sew**: **Trim, Clip, and Layer Seams**" video.

UNDERSTITCH - See **Machine Stitches**: "how to understitch" video.

PATTERN PIECES WILL BE IDENTIFIED BY NUMBERS THE FIRST TIME THEY ARE USED.

SEWING TUTORIALS



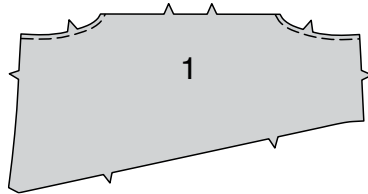
Build your skills viewing short, easy-to-follow videos at simplicity.com/sewingtutorials

DRESS A, B, C

FRONT

VIEW A:

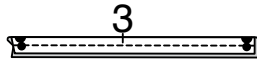
1. STAYSTITCH armhole edges of **UPPER FRONT** (1) 1/4"(6mm) from raw edge.



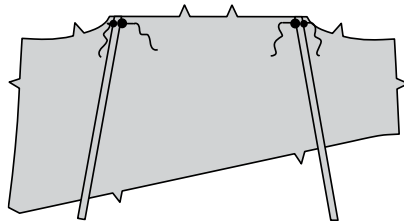
2. Fold **SHOULDER STRAP** (3) in half, lengthwise.

Stitch long edges in a 3/8"(1cm) seam.

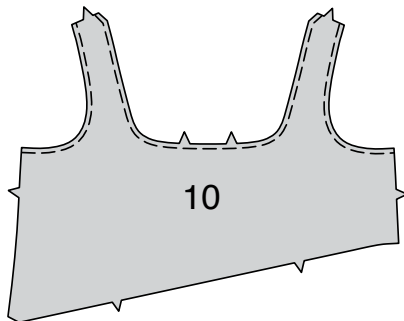
Turn strap; press.



3. On outside, baste front end of straps to front, matching dots.

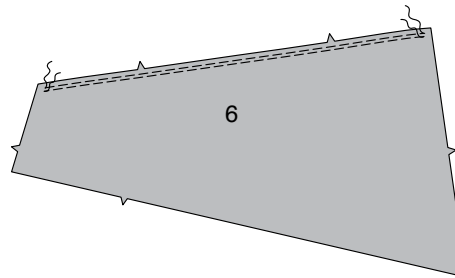


4. VIEWS B, C - STAYSTITCH neck and armhole edges of **UPPER FRONT** (10) sections 1/4"(6mm) from raw edge.

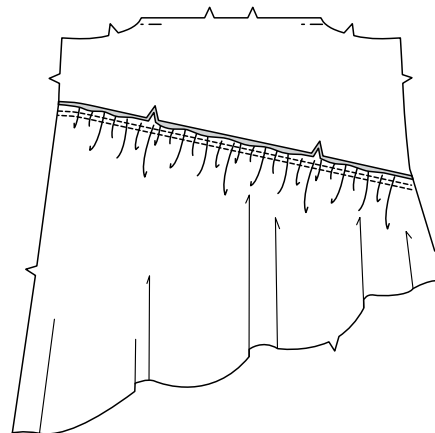


ALL VIEWS:

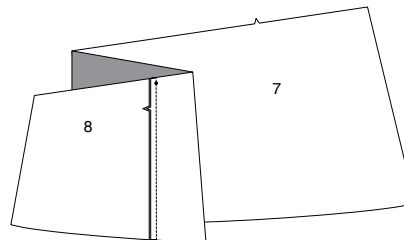
5. GATHER upper edge of **MIDDLE FRONT AND BACK** (6) front section between seamlines.



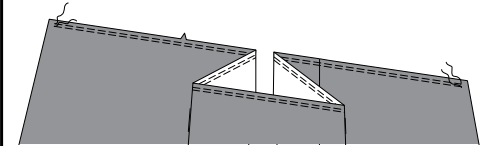
6. With right sides together, pin middle front to front, matching centers and notches. Adjust gathers; baste. Stitch. Stitch again 1/4"(6mm) away from first stitching. Trim seam close to stitching. Press seam up.



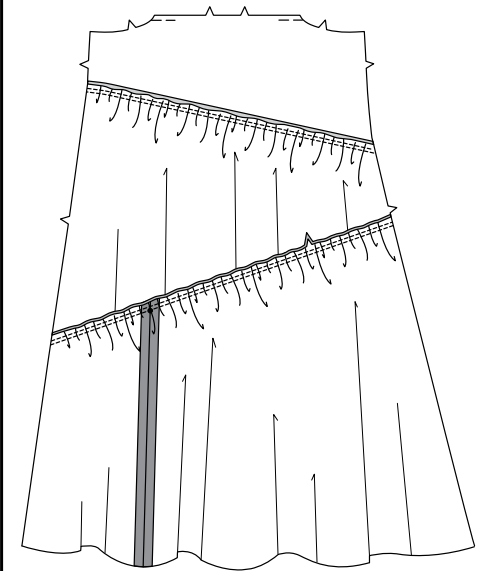
7. With right sides together, stitch right **LOWER FRONT AND BACK** (7) front section to left **LOWER FRONT AND BACK** (8) front section, matching notches and small dots.



8. GATHER upper edge of lower front between seamlines.

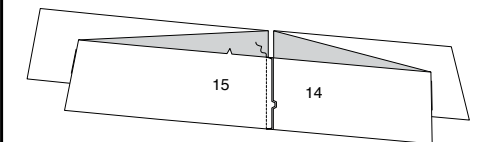


9. Pin lower front to lower edge of middle front, matching notches and small dots. Adjust gathers; baste. Stitch. Stitch again 1/4"(6mm) away from first stitching. Trim seam close to stitching. Press seam up.

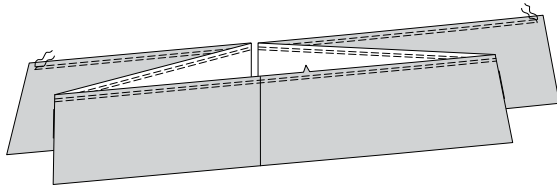


VIEWS B, C:

10. Stitch **RIGHT RUFFLE** (14) to **LEFT RUFFLE** (15), matching double notches.

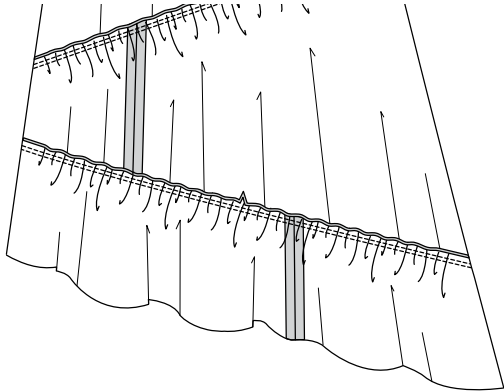


11. **GATHER** upper edge of ruffle between seamlines.



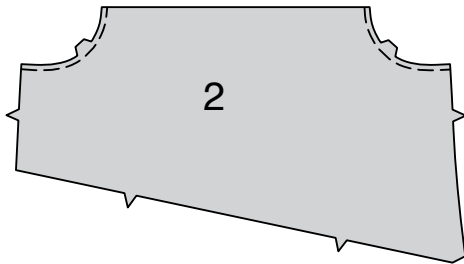
12. Pin front ruffle to lower edge of lower front, matching notches.

Adjust gathers; baste. Stitch. Stitch again 1/4"(6mm) away from first stitching. Trim seam close to stitching. Press seam up.

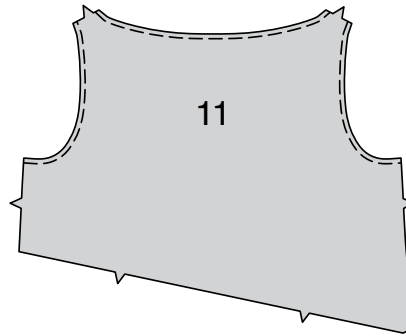


BACK

13. **VIEW A: STAYSTITCH** armhole edges of UPPER BACK (2) 1/4"(6mm) from raw edge.



14. **VIEWS B, C - STAYSTITCH** neck and armhole edges of UPPER BACK (11) sections 1/4"(6mm) from raw edge.



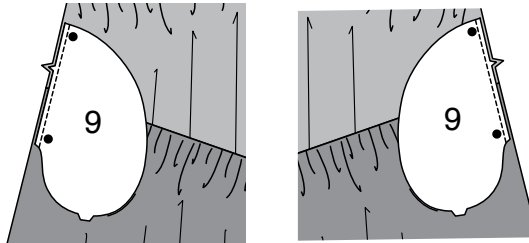
ALL VIEWS: Prepare and stitch remaining seams of lower and middle sections same as for front.

VIEWS B, C: Prepare and stitch remaining seams of ruffle sections same as for front.

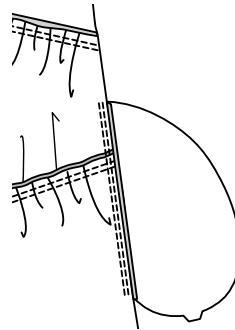
POCKET

15. With **RIGHT** sides together, pin **POCKET (9)** sections to side edges of front dress and back dress, matching large dots and having raw edges even.

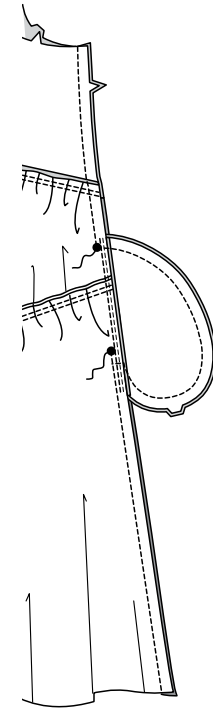
Stitch in a 1/4"(6mm) seam.



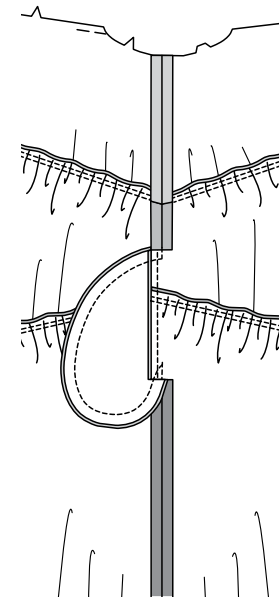
16. **UNDERSTITCH** front pocket.



17. Pin front and back dress together at side seams, matching large dots and seams. Stitch side seams, leaving an opening between large dots. Stitch pocket edges together between side seams.



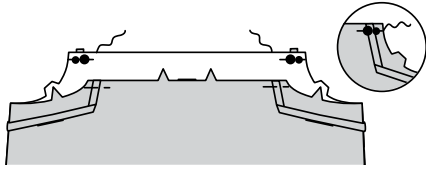
18. Clip back seam allowance at ends of pocket. Press seam open above and below clip. Press pocket toward front.



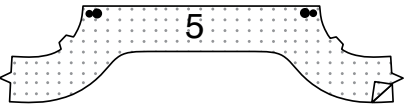
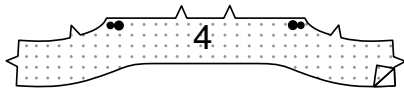
FINISHING

VIEW A:

19. On outside, baste free ends of straps to back, matching dots.

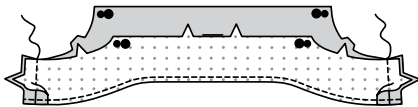


20. Fuse INTERFACING to wrong side of FRONT FACING (4) and BACK FACING (5) fabric sections, following manufacturer's instructions.



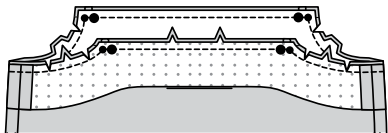
21. Stitch side seams of facing sections.

FINISH lower edge.



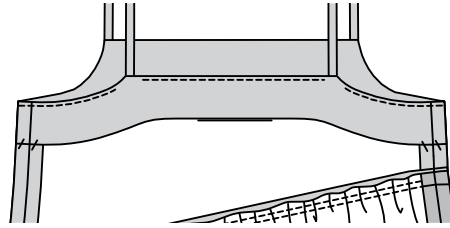
22. With right sides together, pin facing to upper edge of dress (over straps), matching centers, side seams and dots. Stitch in a 3/8" (1cm) seam, pivoting at small dots.

TRIM corners; clip curves.



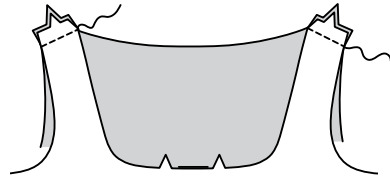
23. UNDERSTITCH facing as far as possible.

Turn facing to inside, turning out straps; press. **TACK** lower edge of facing to side seams.

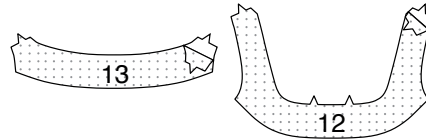


VIEWS B, C:

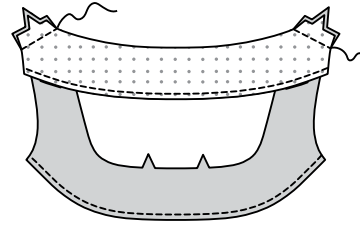
24. Stitch front to back at shoulder seams.



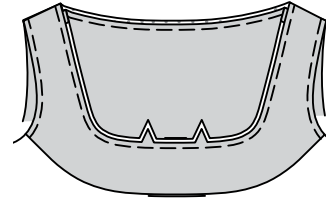
25. Fuse INTERFACING to wrong side of FRONT FACING (12) and BACK FACING (13) fabric sections, following manufacturer's instructions.



26. Stitch shoulder seams of facing sections. **FINISH** lower edge of facings.

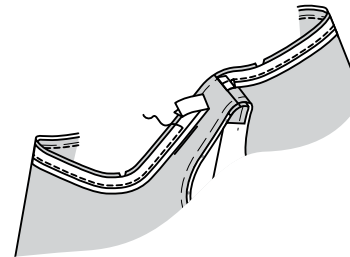


27. With **WRONG** sides together, pin facing to dress, matching centers and seams, having raw edges even. Baste 1/4" (6mm) from raw neck and armhole edges.



28. Open out one edge of single fold bias tape.

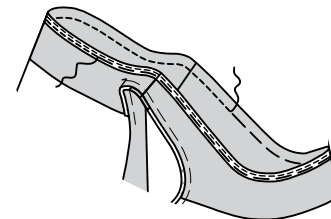
With **RIGHT** sides together and raw edges even, pin tape to neck edge, turning under and lapping one end at one shoulder seam. Stitch in a 3/8" (1cm) seam. Trim.



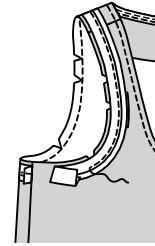
29. UNDERSTITCH bias tape.

Turn bias tape to **INSIDE**; press. Baste close to inner edge.

On **OUTSIDE**, topstitch as basted.



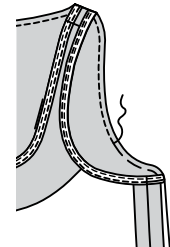
30. With **RIGHT** sides together, pin bias tape to armhole edge, having raw edges even, turning under and lapping one end at side seam. Stitch in a 3/8" (1cm) seam. Trim.



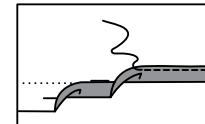
31. UNDERSTITCH bias tape.

Turn bias tape to **INSIDE**; press. Baste close to inner edge.

On **OUTSIDE**, topstitch as basted.



32. ALL VIEWS: Make a 5/8" (1.5cm) **NARROW HEM** on lower edge of dress.





Congrats!

You've completed your sewing adventure

**SHARE
YOUR** LOOK



Post your pattern and tag us
[@simplicity_creative_group](#) and [#simplicitypatterns](#)
for a chance to be featured on our social media.

Look for more PDF patterns at [simplicity.com](https://www.simplicity.com)

Have a question or need help with your sewing project call us at
1-800-782-0323

McCall's
by **design**_{group}