

**McCall's**

M8503

*Brandi*  
JOAN



See Sew-Along video for customizing with lace.  
Repportez-vous à la vidéo Sew Along pour personnaliser avec de la dentelle.



Designed and printed in USA

**Average**

**MISSES' DRESS**

**Suggested Fabrics:** Challis, Cotton Blends, Crepes, Lawn. **Lining:** Lining Fabrics, Voile.

**Interfacing:** Lightweight Fusible.

**Notions:** 3½ yds. (3.2m) of ¼" (6mm) boning, twenty six grommets with a 5/16" (8mm) opening, 3¼ yds. (3.0m) of ¼" (6mm) cording, one 7" (18cm) invisible zipper, ¾ yds. (0.7m) of ¾" (2cm) elastic.

Sizes	6	8	10	12	14	16	18	20	22	24
European	32	34	36	38	40	42	44	46	48	50

**BODY MEASUREMENTS: Select pattern size based on body measurements**

<b>Bust</b>	30½	31½	32½	34	36	38	40	42	44	46	Ins.
<b>Waist</b>	23	24	25	26½	28	30	32	34	37	39	"
<b>Hip-9" below waist</b>	32½	33½	34½	36	38	40	42	44	46	48	"
<b>Back-neck to waist</b>	15½	15¾	16	16¼	16½	16¾	17	17¼	17½	17¾	"

**Dress**

45"*	27%	27%	27%	27%	27%	27%	3%	3%	3%	3%	Yds.
60"*	2¼	2¼	2¼	2¼	2¼	2¼	2¾	2¾	2¾	2¾	"
<b>Lining</b>											
45"*	5%	5%	5%	5%	¾	¾	7%	7%	7%	7%	Yd.
<b>Interfacing</b>											
20"	1¼	1¼	1¼	1¾	1½	1½	1¾	1¾	1¾	1¾	Yds.

**FINISHED GARMENT MEASUREMENTS (Includes Design and Wearing Ease)**

<b>Bust</b>	32½	33½	34½	36	38	40	42	44	46	48	Ins.
<b>Waist</b>	23½	24½	25½	27	29	31	33	35	37	39	"
<b>Width, lower edge</b>											
<b>Dress</b>	50	51	52	53½	55½	57½	59½	61½	63½	65½	Ins.
<b>Finished back length from base of neck</b>											
<b>Dress</b>	50½	50¾	51	51¼	51½	51¾	52	52¼	52½	52¾	Ins.

\*with nap \*\*without nap

**Moins Facile**

**ROBE POUR JEUNES FEMMES**

**Tissus Conseillés:** Challis, Cotonnades, Crêpes, Linon. **Doublure:** Tissus à doublure, Voile.

**Entoilage:** Thermocollant léger.

**Mercerie:** 3.2m de baleine de 6mm, 26 œillets avec ouverture de 8mm, 3.0m de cordon de 6mm, 1 fermeture à glissière invisible de 18cm, 0.7m d'élastique de 2cm.

Tailles	6	8	10	12	14	16	18	20	22	24
Françaises	34	36	38	40	42	44	46	48	50	52
Européen	32	34	36	38	40	42	44	46	48	50

**MESURES DU CORPS: Choisissez la taille du patron basée sur les mesures du corps**

<b>Poitrine</b>	78	80	83	87	92	97	102	107	112	117	cm
<b>Taille</b>	58	61	64	67	71	76	81	87	94	99	"
<b>Hanches (23cm au-dessous de la taille)</b>											
	83	85	88	92	97	102	107	112	117	122	cm

<b>Dos du cou à la taille</b>	39.5	40	40.5	41.5	42	42.5	43	44	44.5	45	"
-------------------------------	------	----	------	------	----	------	----	----	------	----	---

**Robe**

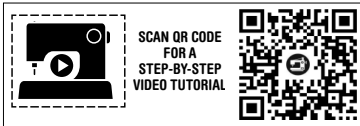
115cm*	2.6	2.6	2.6	2.6	2.6	2.6	3.1	3.1	3.1	3.1	m
150cm*	2.1	2.1	2.1	2.1	2.1	2.4	2.4	2.5	2.5	2.5	"
<b>Doublure</b>											
115cm**	0.5	0.6	0.6	0.6	0.7	0.7	0.7	0.8	0.8	0.8	m
<b>Entoilage</b>											
51cm*	1.1	1.1	1.1	1.3	1.4	1.4	1.4	1.5	1.5	1.5	m

**MESURES DES VÊTEMENTS FINI (Motif et aisance de port compris)**

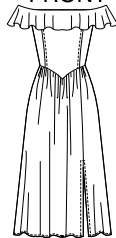
<b>Poitrine</b>	83	85	88	91	97	102	107	112	117	122	cm
<b>Taille</b>	60	62	65	69	74	79	84	89	94	99	"
<b>Largeur à l'ourlet</b>											
<b>Robe</b>	127	130	132	136	141	146	151	156	161	166	cm
<b>Longueur finie – dos, votre nuque à l'ourlet</b>											
<b>Robe</b>	128	129	130	130	131	131	132	133	133	134	cm

\*avec sens \*\*sans sens





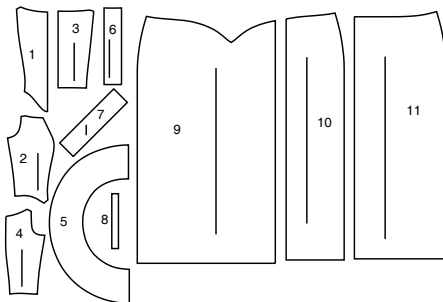
FRONT



BACK



11 PATTERN PIECES



- 1 Bodice Front
- 2 Bodice Side Front
- 3 Bodice Back
- 4 Bodice Side Back
- 5 Flounce
- 6 Back Facing
- 7 Armband
- 8 Guide for Elastic
- 9 Skirt Front
- 10 Skirt Left Front
- 11 Skirt Back

PATTERN MARKINGS

- GRAINLINE:** Place on straight grain of fabric, parallel to selvage or fold.
- FOLDLINE:** Place line on fold of fabric.
- BUTTONHOLE MARKING:** Indicates exact length and placement of buttonholes.
- BUTTON MARKING:** Indicates button placement.
- NOTCHES AND SYMBOLS:** For matching seams and construction details.
- Indicates the Bustline, Waistline, Hip and/or Biceps.** Measurements refer to circumference of Finished Garment (Body Measurement + Wearing Ease + Design Ease). Adjust pattern if necessary. The measurement excludes pleats, tucks, darts and seam allowances.
- SEAM ALLOWANCE:** 5/8" (1.5cm) included unless otherwise indicated, but not printed on tissue.

ADJUST IF NECESSARY

- Lengthen or Shorten at adjustment lines (==) or where indicated on pattern. If substantial length is added, you may need to purchase additional fabric.
- TO SHORTEN:** Crease along adjustment line. Make a fold half the amount needed. Tape in place.
- TO LENGTHEN:** Slash between adjustment lines. Spread amount as needed, keeping edges parallel. Tape over paper.
- When Alteration lines are not on tissue, lengthen or shorten at lower edge.

CUTTING AND MARKING

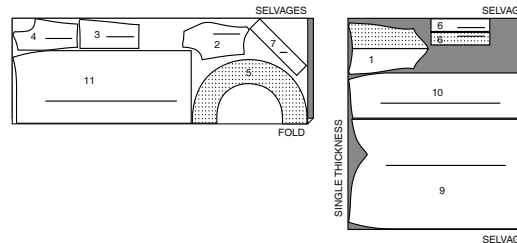
- SHRINK FABRIC** if not labeled pre-shrunk. Press.
- CIRCLE LAYOUT** for View, Size, Fabric Width.
- Use **WITH NAP** layout for fabrics with one-way designs, nap, pile or surface shading. Because most knits have surface shading, a with nap layout is used.
- For **DOUBLE THICKNESS (WITH FOLD)** - fold fabric with right sides together.
- \* DOUBLE THICKNESS (WITHOUT FOLD)** - For fabrics with nap, fold fabric crosswise, right sides together. Mark as shown. Cut along crosswise fold of fabric (A). Turn upper layer 180° so arrows go in same direction and place over lower layer, right sides together (B).
- For **SINGLE THICKNESS** - place fabric right side up. (For Fur Pile fabrics, place pile side down.)
- ★ Cut other pieces first, allowing enough fabric to cut this piece. Open fabric. For "Cut 1" pieces, cut piece once on single layer of fabric with piece face up on right side of fabric.
- Pattern may have cutting lines for several sizes. Select the proper cutting line or pattern pieces for your size.
- Before **CUTTING** place all pieces on fabric according to layout. Pin. (Layouts show approximate position of pattern pieces; position may vary according to your pattern size.) Cut **ACCURATELY**, cutting notches outward.
- Before removing pattern, **TRANSFER MARKINGS** and lines of construction to Wrong Side of fabric, using the Pin and Chalk Pencil method or Tracing Paper and Dressmaker Wheel. Markings needed on right side of fabric should be thread traced.
- NOTE:** Broken-line boxes (a! b! c!) in layouts represent pieces cut by measurements provided.

CUTTING LAYOUTS

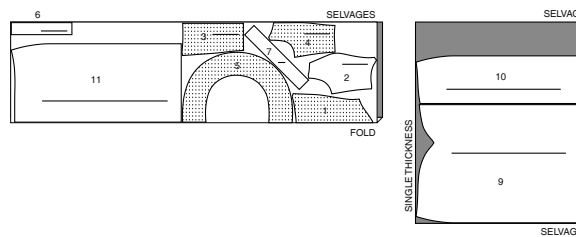
DRESS

USE PIECES 1 2 3 4 5 6 7 9 10 11

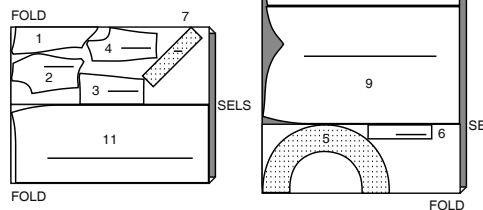
45" (115CM)  
WITH NAP  
SIZES 6-8-10-12-14-16



45" (115CM)  
WITH NAP  
SIZES 18-20-22-24

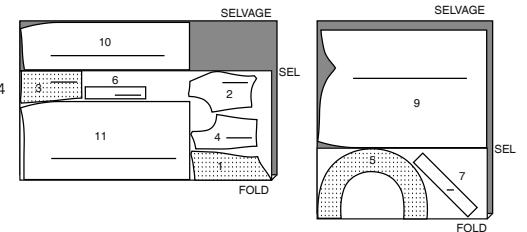


60" (150CM)  
WITH NAP  
SIZES 6-8-10-12-14



RIGHT SIDE OF PATTERN	WRONG SIDE OF PATTERN	RIGHT SIDE OF FABRIC	WRONG SIDE OF FABRIC
-----------------------	-----------------------	----------------------	----------------------

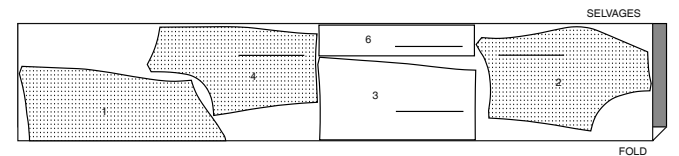
60" (150CM)  
WITH NAP  
SIZES 16-18-20-22-24



INTERFACING

USE PIECES 1 2 3 4 6

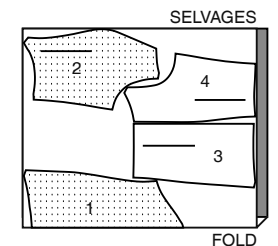
20" (51CM)  
WITHOUT NAP  
ALL SIZES



LINING

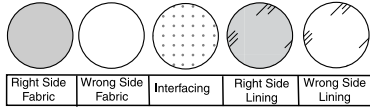
USE PIECES 1 2 3 4

45" (115CM)  
WITHOUT NAP  
ALL SIZES



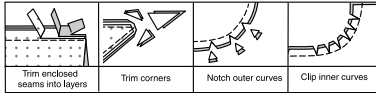
**SEWING INFORMATION**

**FABRIC KEY**



**SEAM ALLOWANCES**

Use 1/4" (6mm) seam allowances unless otherwise indicated.



**PIN AND FIT**

Pin or baste seams, **RIGHT SIDE TOGETHER**, matching notches. Fit garment before stitching major seams.

**PRESS**

Press seam allowances flat; then open unless otherwise stated. Clip where necessary so they lie flat.

**GLOSSARY**

Sewing terms appearing in **BOLD TYPE** in Sewing Instructions are explained below.

**GATHER** - Stitch along seamline and again 1/4" (6mm) away in seam allowance, using long machine stitches. Pull thread ends when adjusting to fit.

**NARROW HEM** - Turn in hem; press, easing in fullness if necessary. Open out hem. Turn in again so raw edge is along crease; press. Turn in along crease; stitch.

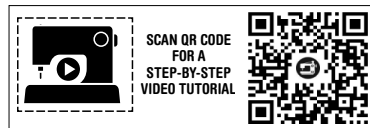
**REINFORCE** - Stitch along seamline where indicated in sewing instructions, using small machine stitches.

**SLIPSTITCH** - Slide needle through a folded edge, then pick up a thread of underneath fabric.

**STAYSTITCH** - Stitch 1/8" (3mm) from seamline in seam allowance (usually 1/2" (1.3cm) from raw edge).

**TOPSTITCH** - On outside, stitch 1/4" (6mm) from edge, seam or previous stitching, using presser foot as guide, or stitch where indicated in instructions.

**UNDERSTITCH** - Open out facing or underside of garment; stitch to seam allowance close to seam.

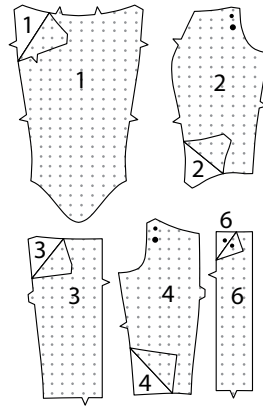


**DRESS A**

**NOTE:** Under each sub-heading, the first View will be illustrated, unless otherwise indicated

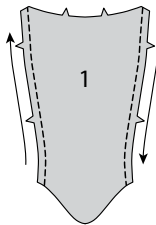
**INTERFACING**

**1.** Pin **INTERFACING** to wrong side of each matching **FABRIC** section. Fuse, following manufacturer's instructions.

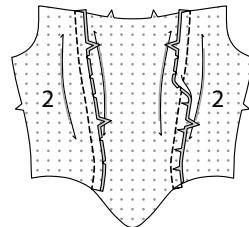


**BODICE**

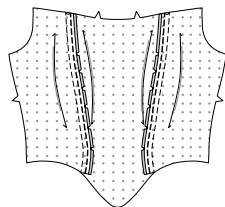
**2.** **STAYSTITCH** side edges of **BODICE FRONT** (1).



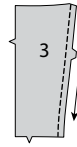
**3.** Pin **BODICE SIDE FRONT** (2) sections to side edges of bodice front, clipping bodice front where necessary. Baste. Stitch. Press seams toward bodice front.



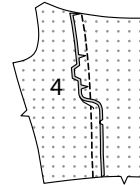
**4.** To form casings for boning, stitch seam allowances in place, 1/4" (6mm) from raw edge, as shown.



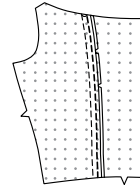
**5.** **STAYSTITCH** side edge of **BODICE BACK** (3).



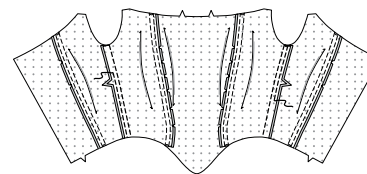
**6.** Pin **BODICE SIDE BACK** (4) to side edge of bodice back, clipping bodice back where necessary. Baste. Stitch. Press seams toward bodice back.



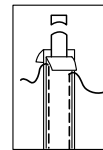
**7.** To form casing for boning, stitch seam allowances in place, 1/4" (6mm) from raw edge, as shown.



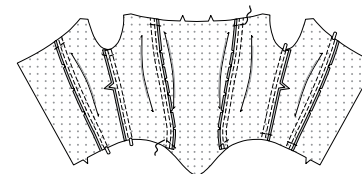
**8.** Stitch front to backs at sides. Press seams toward bodice back. To form casings for boning, stitch seam allowances in place, 1/4" (6mm) from raw edge, as shown.



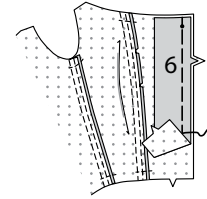
**9.** Cut boning the length of each side, side front and side back seam between upper and lower seamlines. Remove boning from casing and trim away 1/8" (3mm) of boning on ends, rounding edges, as shown.



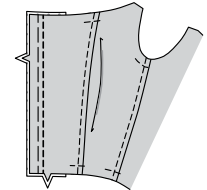
**10.** Insert boning into matching casings. Stitch across upper and lower edges of each casing along seamlines.



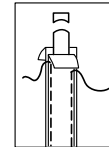
**11.** With **WRONG** sides together, pin **BACK FACING** (6) to back edge of bodice back, matching notches and small dots. Baste along back seamline.



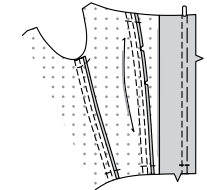
**12.** **TOPSTITCH** bodice back 3/8" (1cm) from basting.



**13.** Cut boning the length of back seams between upper and lower seamlines. Remove boning from casing and trim away 1/8" (3mm) of boning on ends, rounding edges, as shown.



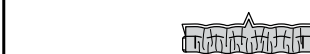
**14.** Insert boning into casings. Stitch across upper and lower edges of each casing along seamlines.



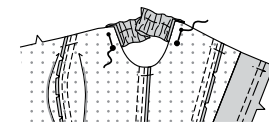
**15.** To form casing for elastic, with **WRONG** sides together, fold **ARMBAND** (7) in half lengthwise. Baste notched edge.



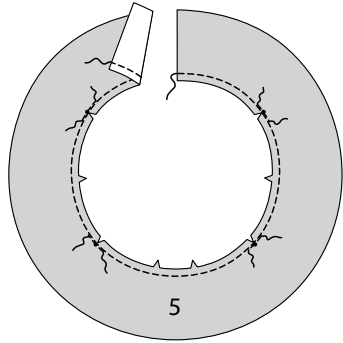
**16.** Cut elastic the length of **GUIDE FOR ELASTIC** (8). Insert elastic into casing, having ends even. Baste ends.



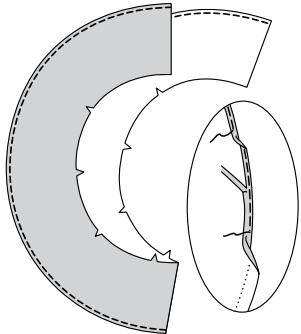
**17.** On **OUTSIDE**, pin armband to armhole edges of bodice, matching symbols. Baste.



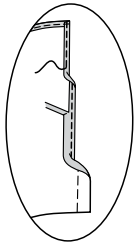
18. REINFORCE FLOUNCE (5) through small dots. Clip to small dots. STAYSTITCH inner edge.



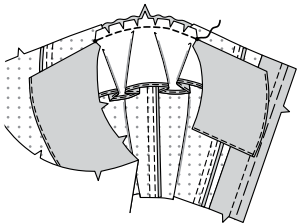
19. To hem outer edge of flounce, press under 1/4" (6mm). Stitch close to pressed edge. Trim close to stitching. Turn in again along trimmed edge. Stitch in place.



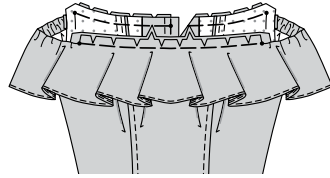
20. Hem back edges of flounce in same manner as outer edge.



21. With WRONG sides up, pin flounce to upper edge of armband, as shown, matching small dots and notches, clipping flounce where necessary. Baste. Stitch between clips.

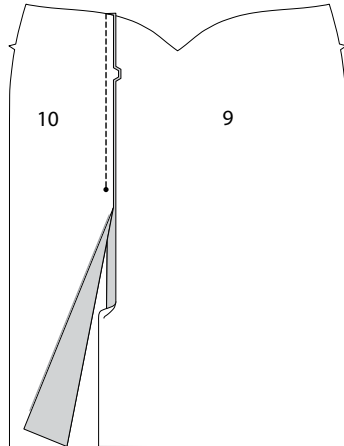


22. Turn flounce to OUTSIDE. With RIGHT sides up, pin flounce to upper edge of bodice, matching centers, notches and small dots. Baste.

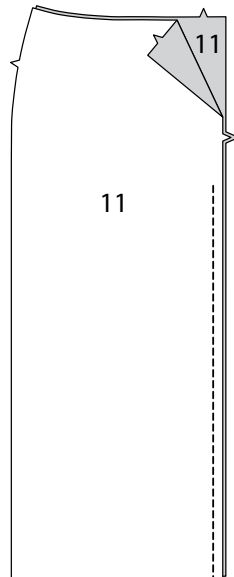


SKIRT

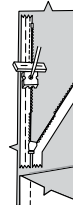
23. Stitch SKIRT LEFT FRONT (10) to SKIRT FRONT (9), matching notches, leaving open below large dot.



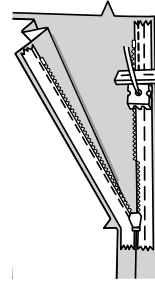
24. Stitch SKIRT BACK (11) sections together at center back, leaving open from 1" (2.5cm) below notch to upper edge. NOTE: Stitch the invisible zipper using an invisible zipper foot.



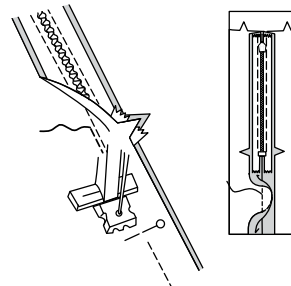
25. Open the zipper and press the tape using a cool iron. On OUTSIDE, pin RIGHT side of the zipper face down on the RIGHT side of the zipper opening. Have the coil along the seam line, the tape within the seam allowance and the top stop 3/4"(2cm) below upper edge, as shown. Hand-baste along center of the tape. Position zipper foot at the top of the zipper with RIGHT groove of the foot over coil. Stitch along tape to the notch. Back-stitch to reinforce.



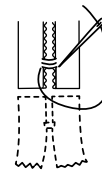
26. Pin the remaining half of the zipper to the LEFT side of the zipper opening in same manner. Hand-baste along the center of the tape. Position zipper foot at the top of the zipper with LEFT groove over the coil. Stitch along tape to the notch. Back-stitch to reinforce.



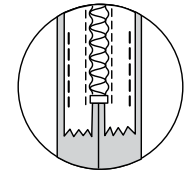
27. Close zipper and check that it is invisible from the OUTSIDE. Pull the free ends of the zipper tape away from the seam allowance. Pin remaining back seam together below zipper. Position zipper foot all the way to the LEFT so the needle goes down through the outer notch of the foot. Start stitching seam 1/4"(6mm) above lowest stitch and slightly to the LEFT. Stitch remainder of seam, connecting with previous stitching.



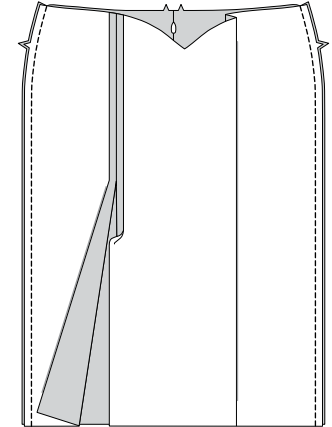
28. If the zipper is longer than the opening, using a strong thread, hand-sew a few small stitches across ends of coils at end of opening. Trim away lower end of zipper tape to within 5/8"(1.5cm) of hand-stitches.



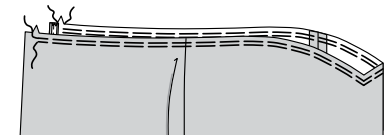
29. If you prefer, open out each seam allowance at ends of zipper and stitch tape to seam allowance.



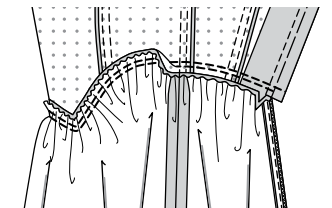
30. Stitch skirt front to skirt back at sides.



31. GATHER upper edge of skirt.

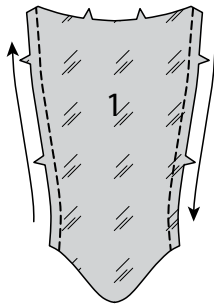


32. Pin skirt to lower edge of bodice, matching centers and notches. Adjust gathers; baste. Stitch, continuing along stitching line. Trim. Press seam toward bodice.

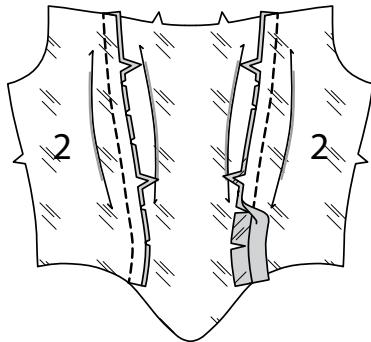


**FINISHING**

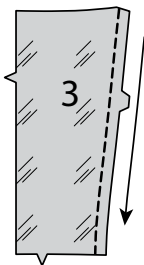
**33. STAYSTITCH** side edges of bodice front LINING (1).



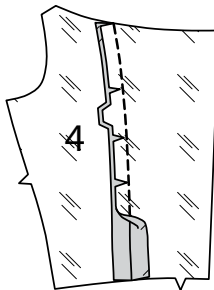
**34.** Pin bodice side front LINING (2) sections to side edges of bodice front lining, clipping bodice front lining where necessary. Baste. Stitch.



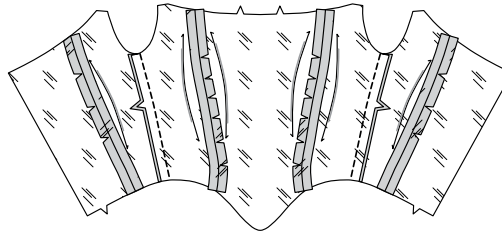
**35. STAYSTITCH** side edge of bodice back LINING (3).



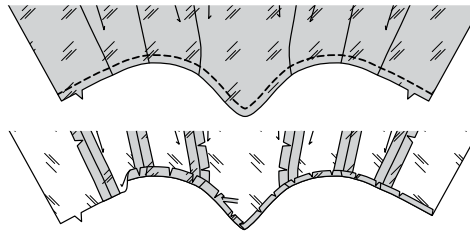
**36.** Pin bodice side back LINING (4) to side edge of bodice back lining, clipping bodice back lining where necessary. Baste. Stitch.



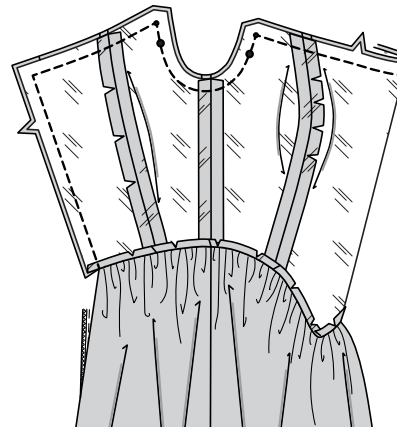
**37.** Stitch bodice front lining to bodice back linings at sides.



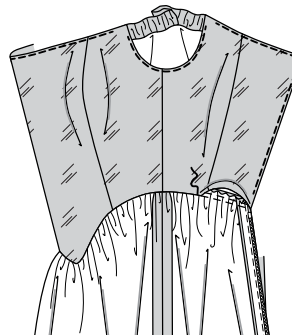
**38. STAYSTITCH** lower edge of lining. Turn in seam allowance on lower edge of lining, clipping lining where necessary. Press. Trim pressed seam allowance to 3/8" (1cm).



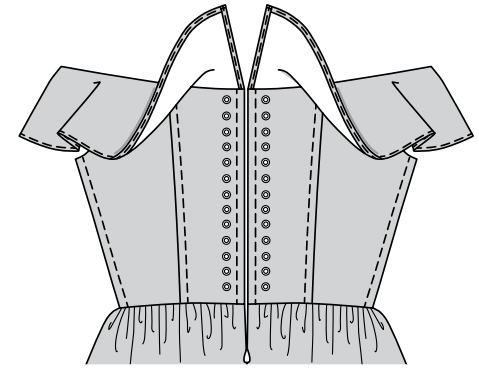
**39.** With RIGHT sides together, pin lining to bodice, matching symbols and notches. Stitch upper, armhole and back edges, being careful not to catch armband and flounce in stitching. Trim UNDERSTITCH lining as far as possible.



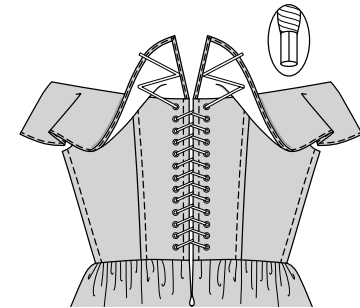
**40.** Turn. Press. SLIPSTITCH pressed edge over seam.



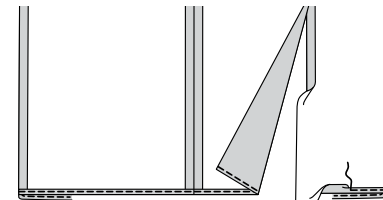
**41.** Apply grommets to bodice back at small dots, following manufacturer's instructions.



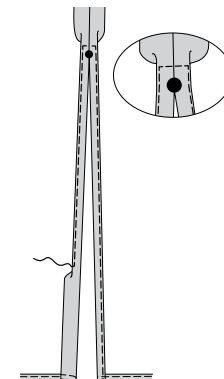
**42.** Wrap ends of cording with shoelace aglets, following manufacturer's instructions. Insert cording through grommets, as shown, beginning at lower edge, extending ends evenly.



**43.** Make 5/8" (1.5cm) NARROW HEM at lower edge of dress.



**44.** Make 5/8" (1.5cm) NARROW HEM at front opening edges, tapering to nothing above large dot. Pivot across seam 1/4" (6mm) above large dot when stitching.





# Congrats!

You've completed your sewing adventure

---

**SHARE  
YOUR** LOOK



Post your pattern and tag us  
[@simplicity\\_creative\\_group](#) and [#simplicitypatterns](#)  
for a chance to be featured on our social media.

Look for more PDF patterns at [simplicity.com](https://www.simplicity.com)

Have a question or need help with your sewing project call us at  
1-888-588-2700

**McCall's**  
by **design**<sub>group</sub>

McCall's ©2024 a division of IG Design Group Americas Inc. • Atlanta, GA 30342 USA [www.thedesigngroup.com](http://www.thedesigngroup.com) • All Rights Reserved. [www.mccall.com](http://www.mccall.com) • Made in the U.S.A. Fabriqué aux États-Unis.  
To be used for individual private home use only and not for commercial or manufacturing purposes. • A usage privé seulement et non à des fins commerciales ou de production en série. • Para uso privado solamente, no se puede utilizar con propósitos de comercialización o de producción en serie.