

McCall's

M8501

VINTAGE
90'sDesigned and
printed in USA

MISSES' MOCK SARONG DRESS IN TWO LENGTHS

Suggested Fabrics: Challis, Charmeuse, Crepe de Chine, Handkerchief Linen, Jersey, Lightweight Crepe, Lightweight Linen, Rayon Blends, Silk, Silk Jacquard, Soft Cotton and Cotton Blends, Tissue Faille. **NOTE:** Not suitable for diagonals.

Notions: 1½ yds. (1.3m) of ½" (1.3cm) single fold bias tape, 1 yd. (1.0m) of ¾" (1cm) elastic.

Sizes	4	6	8	10	12	14	16	18	20
European	30	32	34	36	38	40	42	44	46

BODY MEASUREMENTS: Select pattern size based on body measurements

Bust	29½	30½	31½	32½	34	36	38	40	42	Ins.
Waist	22	23	24	25	26½	28	30	32	34	"
Hip-9" below waist	31½	32½	33½	34½	36	38	40	42	44	"
Back-neck to waist	15¼	15½	15¾	16	16¼	16½	16¾	17	17¼	"

View A Dress	45***	2¼	2¼	2¼	2½	3	3	3¾	4¼	4¾	Yds.
60**	2½	2½	2½	2½	2¾	2½	2½	2¾	2¾	2¾	"

View B Dress	45***	3¾	3¾	3¾	3¾	4	4	4½	4½	4½	Yds.
60**	2½	2½	2½	2¾	2¾	2¾	2¾	2¾	2¾	2¾	"

View C Dress	45***	2¼	2½	2½	2½	3	3	3½	3½	3½	Yds.
60**	2	2	2	2	2½	2½	2½	2½	2½	2½	"

View D Dress	45***	2½	2½	2½	2½	2½	2½	3½	3½	3½	Yds.
60**	1¾	1¾	1¾	1¾	1¾	1¾	2	2½	2½	2½	"

FINISHED GARMENT MEASUREMENTS (Includes Design and Wearing Ease)

View A,B,C,D Bust	33	34	35	36	37½	39½	41½	43½	45½	Ins.
-------------------	----	----	----	----	-----	-----	-----	-----	-----	------

View A,B,C,D Waist	32	33	34	35	36½	38½	40½	42½	44½	"
--------------------	----	----	----	----	-----	-----	-----	-----	-----	---

View A,B,C,D Hip	35	36	37	38	39½	41½	43½	45½	47½	"
------------------	----	----	----	----	-----	-----	-----	-----	-----	---

Finished back length from base of neck

View A,B Dress	51¾	52	52½	52½	52¾	53	53½	53½	53¾	Ins.
----------------	-----	----	-----	-----	-----	----	-----	-----	-----	------

View C,D Dress	38¾	39	39¼	39½	39¾	40	40¼	40½	40¾	"
----------------	-----	----	-----	-----	-----	----	-----	-----	-----	---

*with nap **without nap

Easy

ROBE SARONG FAUX EN DEUX LONGUEURS POUR JEUNES FEMMES

Tissus Conseillés: Etamine, Charmeuse, Crêpe de chine, Toile de lin très fine, Jersey, Crêpe léger, Toile de lin fine, Rayonne mélangés, Soie, Soie damassée, Coton et cotonnades souples, Faille légère. **NOTE:** Les diagonales ne conviennent pas.

Merçerie: 1.3m de ruban de biais simple de 1.3cm, 1.0m d'élastique de 1cm.

Tailles	4	6	8	10	12	14	16	18	20
Françaises	32	34	36	38	40	42	44	46	48
Européen	30	32	34	36	38	40	42	44	46

MESURES DU CORPS: Choisissez la taille du patron basée sur les mesures du corps

Poitrine	75	78	80	83	87	92	97	102	107	cm
Taille	56	58	61	64	67	71	76	81	87	"

Hanches (23cm au-dessous de la taille)

	80	83	85	88	92	97	102	107	112	cm
Dos du cou à la taille	39	39.5	40	40.5	41.5	42	42.5	43	44	"

Modèle A Robe	115cm*	2.4	2.5	2.5	2.6	2.7	2.7	3.5	3.9	4.0	m
	150cm*	1.9	1.9	1.9	2.1	2.2	2.3	2.4	2.4	2.5	"

Modèle B Robe	115cm*	3.4	3.4	3.5	3.5	3.5	3.7	3.8	3.8	3.9	m
	150cm*	2.3	2.4	2.4	2.5	2.5	2.5	2.6	2.6	2.6	"

Modèle C Robe	115cm*	2.5	2.6	2.6	2.6	2.7	2.7	2.9	2.9	3.0	m
	150cm*	1.7	1.8	1.8	1.8	1.9	1.9	1.9	1.9	1.9	"

Modèle D Robe	115cm*	1.9	2.1	2.1	2.1	2.2	2.4	2.7	3.1	3.2	m
	150cm*	1.6	1.6	1.6	1.6	1.6	1.7	1.8	1.9	2.1	"

MESURES DES VÊTEMENTS FINI (Motif et aisance de port compris)

Modèle A,B,C,D Poitrine	84	86	89	91	95	100	105	110	116	cm
-------------------------	----	----	----	----	----	-----	-----	-----	-----	----

Modèle A,B,C,D Taille	81	84	86	89	93	98	103	108	113	"
-----------------------	----	----	----	----	----	----	-----	-----	-----	---

Modèle A,B,C,D Hanches	89	91	94	97	100	105	110	116	121	"
------------------------	----	----	----	----	-----	-----	-----	-----	-----	---

Longueur finie – dos, votre nuque à l'ourlet

Modèle A,B Robe	131	132	133	133	134	135	135	136	137	cm
-----------------	-----	-----	-----	-----	-----	-----	-----	-----	-----	----

Modèle C,D Robe	98	99	100	100	101	102	102	103	104	"
-----------------	----	----	-----	-----	-----	-----	-----	-----	-----	---

*avec sens **sans sens



A



B



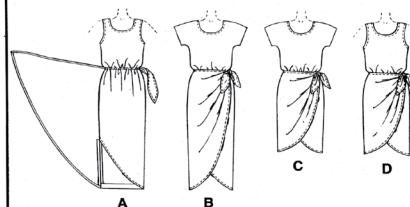
C



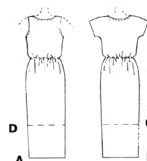
D

6507 McCALL'S®

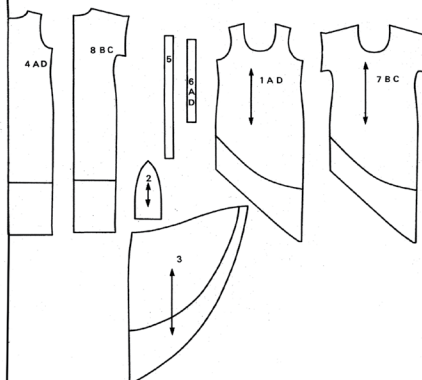
FRONT



BACK



PATTERN PIECES



SARONG DRESS A-B-C-D

1. DRESS FRONT A-D
2. TIE
3. DRAPE
4. DRESS BACK A-D
5. NECK FACING
6. ARMHOLE FACING A-D
7. DRESS FRONT B-C
8. DRESS BACK B-C

PATTERN MARKINGS

- GRAINLINE: Place on straight grain of fabric, an even distance from selvage or fold.
- FOLD LINE: Place on fold of fabric.
- CUTTING LINE: For cutting.
- SEAM LINE: For stitching.
- SEAM ALLOWANCE: Distance between cutting and seam lines, usually 5/8" (1.5cm). On multi-sized patterns seam allowance is included, but not printed on tissue.

- NOTCHES AND CIRCLES: For matching pattern pieces.
- FINISHED GARMENT MEASUREMENT SYMBOL: The finished garment measurements at bust and/or hip are printed on your Front pattern pieces. The measurement includes Body Measurement + Wearing Ease + Design Ease. The measurement excludes pleats, tucks, darts and seam allowances. Measurements are also printed on the back of the pattern envelope when space is available.
- ←46" (117cm)→

ADJUST IF NECESSARY

A pattern is made to fit body measurements, with extra ease for comfort and style. Adjust pieces before placing on fabric. Adjust back waist, sleeve and finished garment lengths using McCALL'S Easy-Rule Guide.

TO SHORTEN: Crease on Easy-Rule Guide. Fold necessary amount. Tape in place.

TO LENGTHEN: Cut on dotted lines of Easy-Rule Guide. Spread necessary amount. Tape over paper.

When Easy-Rule Guide is not on tissue, lengthen or shorten at lower edge.

CUTTING AND MARKING

SHRINK FABRIC not labeled pre-shrunk. Press. **CIRCLE LAYOUT** for View, Size, Fabric Width.

Use **WITH NAP** layout for fabrics with one-way designs, nap, pile or surface shading. Because most knits have surface shading, a with nap layout is used.

For **DOUBLE THICKNESS (WITH FOLD)** – fold fabric with Right Side Together.

*** DOUBLE THICKNESS (WITHOUT FOLD)** – For fabrics with nap, fold fabric crosswise, **RIGHT SIDES TOGETHER**. Mark as shown. Cut along crosswise fold of fabric (A). Turn upper layer 180° so arrows go in same direction and place over lower layer, **RIGHT SIDES TOGETHER** (B).

For **SINGLE THICKNESS** – place fabric Right Side Up. Before **CUTTING** place all pieces on fabric according to layout. Overlap margins. Pin. Cut **ACCURATELY** through fabric and pattern on cutting line. Cut notches outward.

Before **REMOVING PATTERN**, transfer markings to Wrong Side of fabric. Two ways which may be used quickly are the Pin and Chalk Pencil method or Tracing Paper and Dressmaker Wheel.

CUTTING LAYOUTS

■ Black area denotes fabric.

□ Pattern pieces to be placed with printed side up.

SEWING INFORMATION

PIN AND FIT

Pin or baste seams, **RIGHT SIDES TOGETHER**, matching notches. Fit garment before stitching major seams.

WITH A CONVENTIONAL MACHINE

STITCH using a 5/8" (1.5cm) seam allowance unless otherwise specified. Use guide line marking on throat plate of machine for accurate seam allowance.

PRESS seams open unless otherwise stated. Clip if necessary to press seams flat.

WITH AN OVERLOCK (SERGER) MACHINE

SERGE cutting away the excess seam allowances (5/8" [1.5cm] unless otherwise specified). Press seams to one side.

OVEREDGE to finish a raw edge, without cutting away fabric.

For **FUSIBLE** interfacing, follow manufacturer's directions.

FABRIC KEY



SEWING DIRECTIONS

DRESS ALL VIEWS

USING AN OVERLOCK MACHINE (SERGER)

Garment is designed to be sewn totally with a conventional machine or with a combination of conventional machine and overlock machine (serger).

Use your overlock machine to finish seam allowances and facings. For a different look, use your overlock machine for decorative stitching.

To avoid damage to cutting blades on your overlock machine, place pins **WELL AWAY** from seam. When stitching, guide fabric gently, feeding fabric thru your fingers. Stitch slowly around curves.

STITCH using your conventional machine. For wovens, stitch seams using straight machine-stitch. For knits, use special knit stitch for sewing stretch fabrics.

SERGE using the overlock machine, cutting away excess seam allowances when stitching seams or specified amount for decorative stitching. Press seam to one side.

OVEREDGE using the overlock machine to finish edge without cutting.

DECORATIVE STITCHING: When serging shows, it is decorative. Experiment with stitch width, length, tension and pressure, contrasting colors and types of thread.

Try some of these suggestions:

Serge lower edge of **DRESS FRONT** (1) or (7).

Serge curved edges of **TIE** (2).

Serge **UN-NOTCHED** edges of **DRAPE** (3).

For View A or B, serge neck and armhole edge, omitting facings.

For View B or C, serge lower edge of sleeve, cutting away hem allowance.

For View B or C serge neck edge, omitting facing.

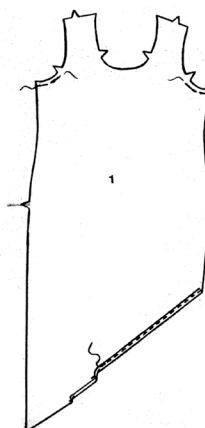
1. FRONT AND BACK

View A is shown.

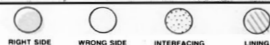
For View A or D, to ease armhole edge of **DRESS FRONT** (1), machine-baste 5/8" (1.5cm) from raw edge from armhole edge to notch.

Finish lower edge of **DRESS FRONT** (1) or (7) with a 5/8" (1.5cm) narrow hem with a conventional machine.

OR, overedge raw edge using an overlock machine (serger). Press under 5/8" (1.5cm). Stitch 3/8" (1cm) from fold using a conventional machine. Press.



FABRIC KEY



6507 - PAGE 2

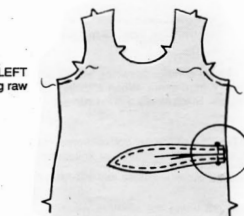
Finish curved edges of TIE (2) with a 5/8" (1.5cm) narrow hem, folding in corner.



To make pleat at straight end of tie, on OUTSIDE, bring dotted lines to solid line in direction of arrows. Baste across pleat.

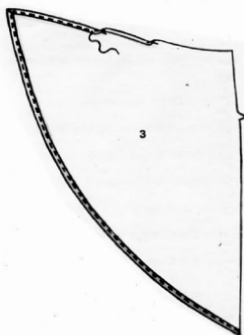


With RIGHT SIDES UP, pin tie to LEFT side of front between circles, having raw edges even. Baste.

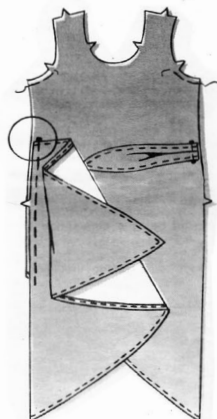


Finish UN-NOTCHED edges of DRAPE (3) with a 5/8" (1.5cm) narrow hem with a conventional machine, folding in corner. Press.

OR, overedge UN-NOTCHED edges using an overlock machine (serger). Press under 5/8" (1.5cm), folding in corner. Stitch 3/8" (1cm) from fold using a conventional machine. Press.

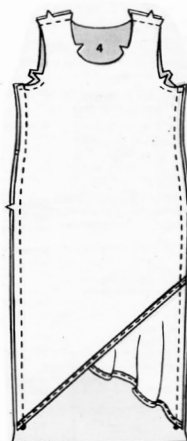


With RIGHT SIDES UP, pin drape to RIGHT side of front, matching notches and having upper edge of drape at square on front. Baste.



VIEW A OR D

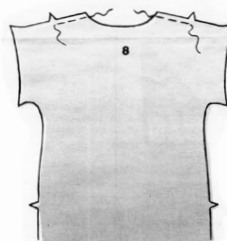
View A is shown.



Stitch front to DRESS BACK (4) at shoulders.

Pin front to back at sides, matching notches and having lower edge of front and drape at circles on back. Stitch, keeping drape free.

VIEW B OR C



To ease shoulder edges of DRESS BACK (8), machine-baste 5/8" (1.5cm) from raw edge between notch and neckline edge.

REINFORCEMENT STITCHING

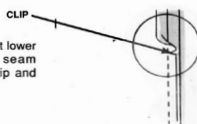
Pin front to back at shoulders, RIGHT SIDES TOGETHER, matching notches. Pull up bobbin thread and adjust ease evenly. Baste. Stitch.

Pin underarm seam of dress, matching notches and having lower edge of front and drape at circles on back. Stitch, keeping drape free.

To reinforce underarm curve, stitch again just inside previous stitching.

Clip underarm seam allowances if necessary to press open.

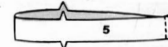
ALL VIEWS



Clip front seam allowance at lower casing line. Press seam allowances open above clip and toward back below clip.

2. FINISHING UPPER EDGE - VIEW A OR D

Stitch center back seam in NECK FACING (5).



Fold neck facing in half lengthwise, WRONG SIDES TOGETHER, matching notches, circles and seams. Press.

To ease neck facing, machine-baste 5/8" (1.5cm) from raw edge.



Pin facing to neck edge, RIGHT SIDES TOGETHER, matching notches, centers and having circles at shoulder seams. Pull up bobbin thread and adjust ease to fit. Baste. Stitch.



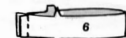
CLIP
Cut seam allowances to 1/4" (6mm). Clip curves.

Turn facing to INSIDE. Press.

Stitch inner edge of facing to garment.



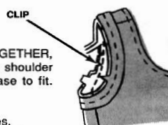
Stitch side seam in ARMHOLE FACING (6).



Fold facing in half lengthwise, WRONG SIDE TOGETHER, matching notches, circles and seams. Press.



Pin facing to armhole edge, RIGHT SIDES TOGETHER, matching notches, side seams and circle to shoulder seam. Pull up bobbin thread and adjust ease to fit. Baste, easing facing to fit. Stitch.



Cut seam allowances to 1/4" (6mm). Clip curves.

Turn facing to INSIDE. Press.

Stitch inner edge of facing to garment.



Pin facing to neck edge, RIGHT SIDES TOGETHER, matching notches, centers and having circles at shoulder seams. Pull up bobbin thread and adjust ease to fit. Baste. Stitch.



Cut seam allowances to 1/4" (6mm). Clip curves.

Turn facing to INSIDE. Press.

Stitch inner edge of facing to garment.



Turn up a 1 1/4" (3.2cm) hem on lower edge of sleeve. Press. Open out hem. Cut seam allowances within hem to 1/4" (6mm).

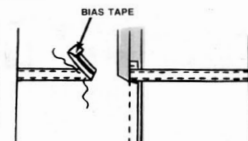


Finish raw edge with a zigzag stitch or turn under 1/4" (6mm) and edge-stitch with a conventional machine or overedge using an overlock machine (serger).

Replace hem and hand-sew in place. Press.

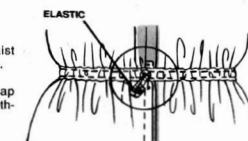
4. CASING AND ELASTIC

To form casing pin bias tape to front and back between casing lines indicated on pattern, WRONG SIDES TOGETHER, turning in ends at one side seam. Stitch close to long edges of tape, breaking stitching at seams and keeping drape and tie free.



Cut elastic a comfortable waist measurement, plus 1/2" (1.3cm).

Insert elastic thru casing. Lap ends 1/2" (1.3cm) and sew together.



Slipstitch opening in casing.



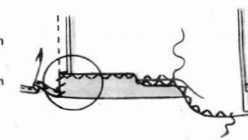
5. HEM

Turn up a 2 1/2" (5.7cm) hem on lower edge of DRESS. Press.

Open out hem and finish raw edge with a zigzag stitch or turn under 1/4" (6mm) and edge-stitch with a conventional machine or overedge using an overlock machine (serger).

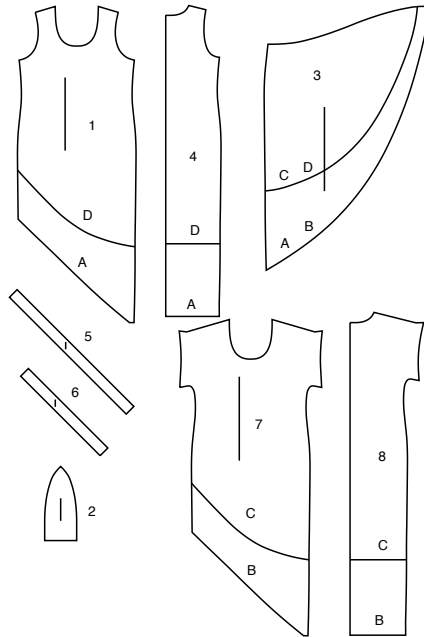
Replace hem and hand-sew in place. Press.

Slipstitch side edges of hem over seams.



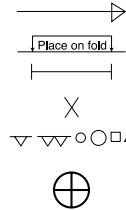
SUPPLEMENTAL CUTTING LAYOUTS

8 PATTERN PIECES



- 1 DRESS FRONT - A OR D
2 TIE
3 DRAPE
4 DRESS BACK - A OR D
5 NECK FACING
6 ARMHOLE FACING
7 DRESS FRONT - B OR C
8 DRESS BACK - B OR C

PATTERN MARKINGS



GRAINLINE: Place on straight grain of fabric, parallel to selvage or fold.

FOLDLINE: Place line on fold of fabric.

BUTTONHOLE MARKING: Indicates exact length and placement of buttonholes.

BUTTON MARKING: Indicates button placement.

NOTCHES AND SYMBOLS: For matching seams and construction details.

Indicates the Bustline, Waistline, Hip and/or Biceps. Measurements refer to circumference of Finished Garment (Body Measurement + Wearing Ease + Design Ease). Adjust pattern if necessary. The measurement excludes pleats, tucks, darts and seam allowances.

SEAM ALLOWANCE: 5/8" (1.5cm) included unless otherwise indicated, but not printed on tissue.

ADJUST IF NECESSARY

Lengthen or Shorten at adjustment lines (==) or where indicated on pattern. If substantial length is added, you may need to purchase additional fabric.

TO SHORTEN: Crease along adjustment line. Make a fold half the amount needed. Tape in place.

TO LENGTHEN: Slash between adjustment lines. Spread amount as needed, keeping edges parallel. Tape over paper.

When Alteration lines are not on tissue, lengthen or shorten at lower edge.

CUTTING AND MARKING

SHRINK FABRIC if not labeled pre-shrunk. Press.

CIRCLE LAYOUT for View, Size, Fabric Width.

Use **WITH NAP** layout for fabrics with one-way designs, nap, pile or surface shading. Because most knits have surface shading, a with nap layout is used.

For **DOUBLE THICKNESS (WITH FOLD)** - fold fabric with right sides together.

*** DOUBLE THICKNESS (WITHOUT FOLD)** - For fabrics with nap, fold fabric crosswise, right sides together. Mark as shown. Cut along crosswise fold of fabric (A). Turn upper layer 180° so arrows go in same direction and place over lower layer, right sides together (B).

For **SINGLE THICKNESS** - place fabric right side up. (For Fur Pile fabrics, place pile side down.)

★ Cut other pieces first, allowing enough fabric to cut this piece. Open layer. For "Cut 1" pieces, cut piece once on single layer of fabric with piece face up on right side of fabric.

Pattern may have cutting lines for several sizes. Select the proper cutting line or pattern pieces for your size.

Before **CUTTING** place all pieces on fabric according to layout. Pin. (Layouts show approximate position of pattern pieces; position may vary according to your pattern size.) Cut **ACCURATELY**, cutting notches outward.

Before removing pattern, **TRANSFER MARKINGS** and lines of construction to Wrong Side of fabric, using the Pin and Chalk Pencil method or Tracing Paper and Dressmaker Wheel. Markings needed on right side of fabric should be thread traced.

NOTE: Broken-line boxes (a! b! c!) in layouts represent pieces cut by measurements provided.

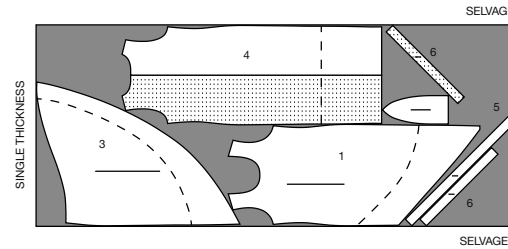
CUTTING LAYOUTS

NOTE: DASHED LINE SHOWN ON PATTERN PIECES IN CUTTING LAYOUTS INDICATES CUTTING LINE FOR SHORTER LENGTH

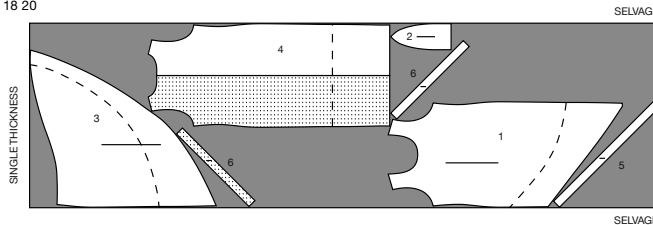
VIEW A, D DRESS

USE PIECES: 1 2 3 4 5 6

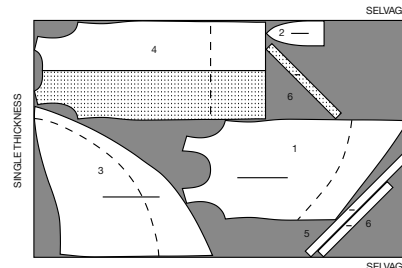
45" (115 CM)
WITH NAP
SIZES 6 8 10 12 14



45" (115 CM)
WITH NAP
SIZES 16 18 20



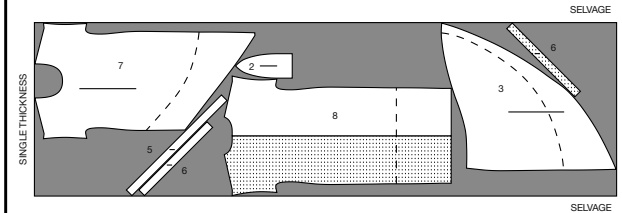
60" (150 CM)
WITH NAP
ALL SIZES



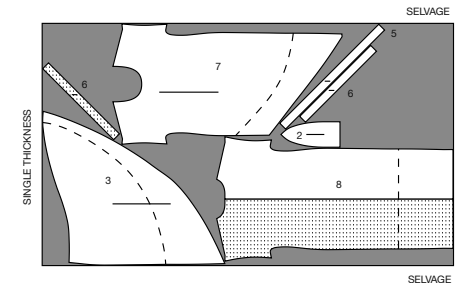
VIEW B, C DRESS

USE PIECES: 2 3 5 6 7 8

45" (115 CM)
WITH NAP
ALL SIZES



60" (150 CM)
WITH NAP
ALL SIZES





Congrats!

You've completed your sewing adventure

SHARE YOUR LOOK



Post your pattern and tag us
[@simplicity_creative_group](#) and [#simplicitypatterns](#)
for a chance to be featured on our social media.

Look for more PDF patterns at [simplicity.com](https://www.simplicity.com)

Have a question or need help with your sewing project call us at
1-800-782-0323

McCall's
by **design**_{group}

McCall's ©2024 a division of IG Design Group Americas Inc. • Atlanta, GA 30342 USA www.thedesigngroup.com • All Rights Reserved. www.mccall.com • Made in the U.S.A. Fabriqué aux États-Unis.

To be used for individual private home use only and not for commercial or manufacturing purposes. • A usage privé seulement et non à des fins commerciales ou de production en série. • Para uso privado solamente, no se puede utilizar con propósitos de comercialización o de producción en serie.