



Designed and printed in USA

Shop all the pattern brands you love @

Simplicity.com

Use the 1 inch (2.54cm) box to ensure you are using rule at 100%

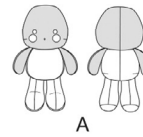
Utilisez la boîte de 2.54 cm pour vous assurer d'utiliser la règle à 100%.

Utilizar un cuadrado de 2.54 cm para asegurarse de estar usando la regla al 100%.

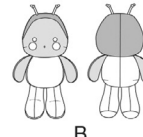
4" of crosswise folded fabric must **STRETCH** from here
10 cm de tricot plié sur le travers et sur le droit-fil doivent s'étirer de cette limite à celle là
10 cm de tejido de punto doblado (a lo largo y luego al través) deben estirarse desde acá

To Here 35%
jusqu'ici 35%
hasta acá 35%

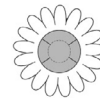
When using the Pick-A-Knit® rule to measure your fabrics stretch capacity, rule must be viewed or printed at 100%.
Quand vous utilisez le taux d'élasticité pour mesurer la capacité d'élasticité des tissus, le taux doit être visible ou imprimé à 100%.
Al utilizar el calibre de elasticidad para medir la capacidad de elasticidad de las telas, el calibre debe estar visible o impreso al 100%.



A



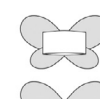
B



C



D



E



F

PLUSH DOLLS AND ACCESSORIES

Suggested Fabrics: A,B; Contrast A, B Contrast 1 and 2, C Contrast 1, D: Fleece. Cheeks A, B, Petals C, Leaves D: Felt. C Contrast 2: Minky. D: Satin, Novelty Metallic. E,F: Metallic Knit. See Stretch Gauge. Contrast E, F Contrast 1: Satin, Novelty Metallic. F Contrast 2: Novelty Sheer. Interfacing A,B: Fusible Knit. Interfacing C,D: Foam Stabilizer. Interfacing E,F: Sew-in Fleece.

Notions: A,B: Two 9mm safety lock eyes, polyfil, 9" (23cm) of ¼" (6mm) twill tape, embroidery floss. Also for B: 3½" (9cm) length of rattail.

Doll A 45" * - ¼ yd. Contrast (Head Front and Back, Arms) 45" * - ¼ yd. Cheek Appliqués: 3" x 3" felt remnant Interfacing: 20" - ½ yd.	Hat D 45" * - ¾ yd. Contrast (Hat Band): 2" x 12" remnant Leaf: 4" x 4" felt remnant Interfacing: 6" x 6" remnant
Doll B 45" * - ¼ yd. Contrast 1 (Face, Arms): 5" x 12" remnant Contrast (Head Back, Forehead): 5" x 15" remnant Cheek Appliqués: 3" x 3" felt remnant Interfacing: 20" - ½ yd.	Wings E 5" x 9" remnant Contrast (Wings): 9" x 14" remnant Interfacing: 9" x 9" remnant
Hat C Hat Top: 6" x 6" in each of fabric and interfacing remnants Contrast (Hat Band): 2" x 12" remnant Petals: One 9" x 12" felt sheet	Wings F 5" x 9" remnant Contrast 1 (Wings): 9" x 16" remnant Contrast 2 (Wings Overlay): 5" x 9" fabric remnant Interfacing: 9" x 10" remnant

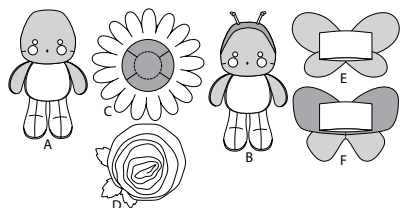
POUPÉES EN PELUCHE ET ACCESSOIRES

Tissus conseillés: A, B, Contraste A, B Contraste 1 et 2, C Contraste 1, D: Molleton. Joues A, B, Pétales C, Feuilles D: Feutre. C Contraste 2: Minky. D: Satin, Métallique fantaisie. E, F: Tricot métallisé. Reportez-vous au taux d'élasticité. Contraste E, F Contraste 1: Satin, Métallique fantaisie. F Contraste 2: Tissus transparents fantaisie. Entoilage A, B: Tricot termocollant. Entoilage C, D: Stabilisateur de mousse. Entoilage E, F: Molleton à coudre.

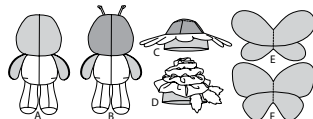
Mercerie: A, B: 2 yeux de sécurité de 9mm, fibre de rembourrage en polyester, 23cm de talonnette de coton de 6mm, fil à broder. Aussi pour B: 9cm de queue de rat.

Poupée A 115cm * - 0.2m Contraste (Tête devant et dos, Bras) 115cm * - 0.2m Appliqués des joues: Morceau de feutrine de 8cm x 8cm Entoilage: 51cm - 0.5m	Chapeau D 115cm * - 0.3m Contraste (Bande de chapeau): Morceau de 5cm x 30cm Feuilles: Morceau de feutrine de 10cm x 10cm Entoilage: Morceau de 18cm x 18cm
Poupée B 115cm * - 0.2m Contraste 1 (Visage, Bras): Morceau de 13cm x 30cm Contraste 2 (Tête dos, Le front): Morceau de 13cm x 38cm morceau Appliqués des joues: Morceau de feutrine de 8cm x 8cm Entoilage: 51cm - 0.5m	Ailes E Morceau de 13cm x 23cm Contraste (Ailes): Morceau de 23cm x 36cm Entoilage: Morceau de 23cm x 23cm
Chapeau C Dessus du chapeau: 18cm x 18cm dans chacune des pièces de tissu et d'entoilage Contraste (Bande de chapeau): Morceau de 5cm x 30cm Pétales: 1 feuille de feutrine de 23cm x 30cm	Ailes F Morceau de 13cm x 23cm Contraste 1 (Ailes): Morceau de 23cm x 41cm Contraste 2 (Pièce superposée des ailes): Morceau de 13cm x 23cm Entoilage: Morceau de 23cm x 25cm

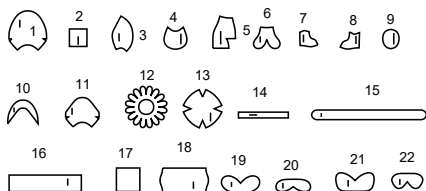
FRONT



BACK

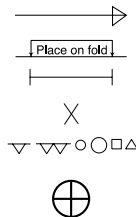


22 PATTERN PIECES



- 1 HEAD FRONT - A,B
2 CHEEK APPLIQUE - A,B
3 HEAD BACK - A,B
4 BODY FRONT - A,B
5 BODY BACK - A,B
6 ARM - A,B
7 OUTER LEG - A,B
8 INNER LEG - A,B
9 SOLE - A,B
10 FOREHEAD - B
11 FACE - B
12 PETALS - C
13 HAT TOP - C,D
14 HAT BAND - C,D
15 ROSE PETAL SPIRAL - D
16 LOWER ROSE RUFFLE - D
17 LEAF - D
18 BAND - E,F
19 UPPER WING - E
20 LOWER WING - E
21 UPPER WING - F
22 LOWER WING - F

PATTERN MARKINGS



GRAINLINE: Place on straight grain of fabric, parallel to selvage or fold.

FOLDLINE: Place line on fold of fabric.

BUTTONHOLE MARKING: Indicates exact length and placement of buttonholes.

BUTTON MARKING: Indicates button placement.

NOTCHES AND SYMBOLS: For matching seams and construction details.

Indicates the Bustline, Waistline, Hip and/or Biceps. Measurements refer to circumference of Finished Garment (Body Measurement + Wearing Ease + Design Ease). Adjust pattern if necessary. The measurement excludes pleats, tucks, darts and seam allowances.

SEAM ALLOWANCE: 5/8" (1.5cm) included unless otherwise indicated, but not printed on tissue.

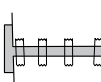
ADJUST IF NECESSARY

Lengthen or Shorten at adjustment lines (==) or where indicated on pattern. If substantial length is added, you may need to purchase additional fabric.

TO SHORTEN: Crease along adjustment line. Spread amount as needed, keeping edges parallel. Tape in place.

TO LENGTHEN: Slash between adjustment lines. Spread amount as needed, keeping edges parallel. Tape over paper.

When Alteration lines are not on tissue, lengthen or shorten at lower edge.



SHRINK FABRIC if not labeled pre-shrunk. Press.

CIRCLE LAYOUT for View, Size, Fabric Width.

Use **WITH NAP** layout for fabrics with one-way designs, nap, pile or surface shading. Because most knits have surface shading, a with nap layout is used.

For **DOUBLE THICKNESS (WITH FOLD)** - fold fabric with right sides together.

*** DOUBLE THICKNESS (WITHOUT FOLD)** - For fabrics with nap, fold fabric crosswise, right sides together. Mark as shown. Cut along crosswise fold of fabric (A). Turn upper layer 180° so arrows go in same direction and place over lower layer, right sides together (B).

For **SINGLE THICKNESS** - place fabric right side up. (For Fur Pile fabrics, place pile side down.)

CUTTING AND MARKING

★ Cut other pieces first, allowing enough fabric to cut this piece. Open fabric. For "Cut 1" pieces, cut piece once on single layer of fabric with piece face up on right side of fabric.

Pattern may have cutting lines for several sizes. Select the proper cutting line or pattern pieces for your size.

Before **CUTTING** place all pieces on fabric according to layout. Pin. (Layouts show approximate position of pattern pieces; position may vary according to your pattern size.) Cut **ACCURATELY**, cutting notches outward.

Before removing pattern, **TRANSFER MARKINGS** and lines of construction to Wrong Side of fabric, using the Pin and Chalk Pencil method or Tracing Paper and Dressmaker Wheel. Markings needed on right side of fabric should be thread traced.

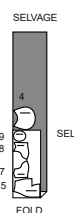
NOTE: Broken-line boxes (at bt cl) in layouts represent pieces cut by measurements provided.

CUTTING LAYOUTS

DOLL A

USE PIECES 4 5 7 8 9

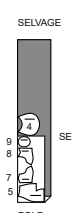
45" (115CM)
WITH NAP



DOLL B

PIECES 4 5 7 8 9

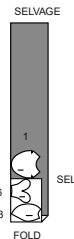
45" (115CM)
WITH NAP



CONTRAST (HEAD FRONT AND BACK, ARMS)

USE PIECES 1 3 6

45" (115CM)
WITH NAP



CONTRAST 1 (FACE, ARMS)

CUT ONE OF PIECE 11 AND TWO OF PIECE 6 FROM FABRIC REMNANT

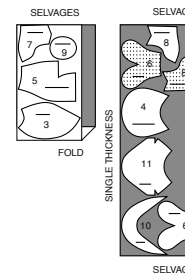
CONTRAST 2 (HEAD BACK, FOREHEAD)

CUT ONE OF PIECE 10 AND TWO OF PIECE 3 FROM FABRIC REMNANT

INTERFACING B

PIECES 3 4 5 6 7 8 9 10 11

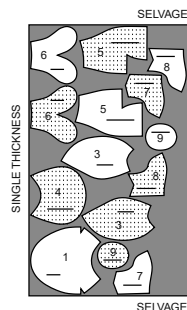
20" (51CM)



INTERFACING A

USE PIECES 1 3 4 5 6 7 8 9

20" (51CM)



HAT C

CUT ONE OF PIECE 13 EACH OF FABRIC AND INTERFACING REMNANTS

PETALS C

CUT ONE OF PIECE 12 FROM FELT REMNANT

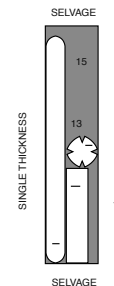
CONTRAST C,D (HAT BAND)

CUT ONE OF PIECE 14 FROM FABRIC REMNANT

HAT D

PIECES 13 15 16

45" (115CM)
WITH NAP



INTERFACING D

CUT ONE OF PIECE 13 FROM REMNANT

LEAF D

CUT ONE OF PIECE 17 FROM FELT REMNANT

WINGS E,F

CUT ONE OF PIECE 18 FROM FABRIC REMNANT

CONTRAST E (WINGS)

CUT TWO OF PIECES 19 AND 20 OF FABRIC REMNANT
CUT ONE OF PIECES 19 AND 20 FROM INTERFACING REMNANT

CONTRAST F 1 (WINGS)

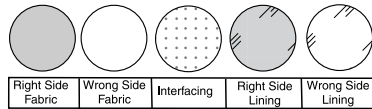
CUT TWO OF PIECES 21 AND 22 OF FABRIC REMNANT
CUT ONE OF PIECES 21 AND 22 OF INTERFACING REMNANT

CONTRAST F 2 (WINGS OVERLAY)

CUT ONE OF PIECE 21 FROM FABRIC REMNANT

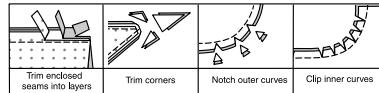
SEWING INFORMATION

FABRIC KEY



SEAM ALLOWANCES

Use 1/4" (6mm) seam allowances unless otherwise indicated.



PIN AND FIT

Pin or baste seams, **RIGHT SIDE TOGETHER**, matching notches. Fit garment before stitching major seams.

PRESS

Press seam allowances flat; then open unless otherwise stated. Clip where necessary so they lie flat.

GLOSSARY

Sewing methods in **BOLD TYPE** have Sewing Tutorial Video available. Scan QR CODE to watch videos:

EDGESTITCH – see *Machine Stitches: "how to sew an edgestitch"* video

TRIM SEAM – see *Seams: "how to trim, clip and layer seams"* video

GLOSSARY OF SEWING METHODS

Sewing methods shown in **BOLD ITALICS** are defined below:

DART SEAM – To stitch dart seam, with **RIGHT** sides together, bring broken lines together carefully matching small dots. On **INSIDE**, place pins at **RIGHT** angles to the broken lines. Stitch the dart seam from outer edge to the point.

TIP- To prevent a "bubble" at the point, make the last few stitches right on the fold and leave the thread ends long enough to tie a knot. **DO NOT** back-stitch at the point.

Press the dart seam flat along the stitching to "blend" the stitches, then press dart open.

GATHER – Loosen needle tension slightly. With **RIGHT** side up, stitch 1/4" (6mm) from cut edge using a long stitch. Stitch again 1/8" (3mm) from the first stitching within the seam allowance.

INTERFACING – Pin interfacing to **WRONG** side of fabric. Fuse interfacing in place following manufacturer's directions.

STUFF – Pull fiberfill apart and fluff it, breaking apart lumps and thick spots. Use pieces about the size of a golf ball or marble. Pack into place using the end of a long handled wooden spoon or chopstick. Pack firmly in place each time stuffing is added. Use both hands to mold and shape, being careful not to over stuff or make lopsided.

SEWING TUTORIALS



SCAN ME

Build your skills viewing short, easy-to-follow videos at simplicity.com/sewingtutorials

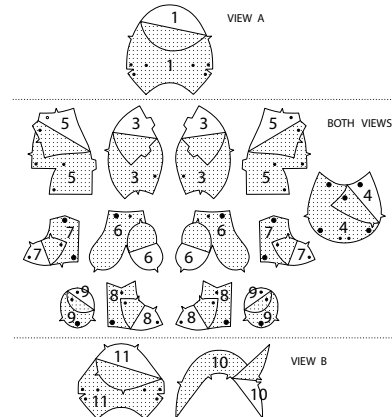
PATTERN PIECES WILL BE IDENTIFIED BY NUMBERS THE FIRST TIME THEY ARE USED.

STITCH 1/4" (6MM) SEAMS WITH RIGHT SIDES TOGETHER UNLESS OTHERWISE STATED.

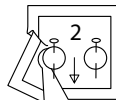
DOLL A, B

NOTE: It may be necessary to make clips in a seam allowance to flatten it for a smoother looking doll after stuffing, but clip sparingly as clipping weakens the seam.

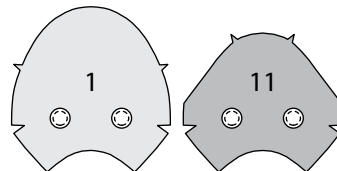
1. Apply fusible knit **INTERFACING** to HEAD FRONT (1) [or FACE (11) and FOREHEAD (10) for View B], HEAD BACK (3), BODY FRONT (4), BODY BACK (5), ARM (6), OUTER LEG (7), INNER LEG (8), and SOLE (9). Fuse in place following manufacturer's directions.



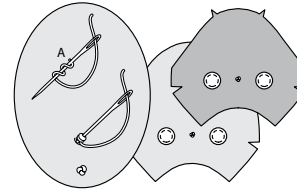
2. Cut appliqué tissue block CHEEK APPLIQUÉ (2) along outer solid line. Pin pattern to **RIGHT** side of fabric. Cut out each appliqué.



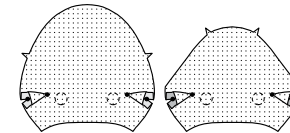
3. Pin cheek appliqué to HEAD FRONT (1) or FACE (11) between markings. **EDGESTITCH** in place.



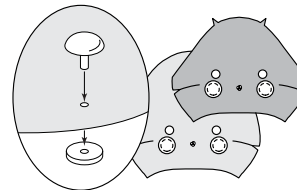
4. To make a French Knot for mouth at center small dot, work with as many threads as desired and use a large eyed needle. Bring thread to **RIGHT** side at A; hold thread with thumb and forefinger in opposite hand; wind thread around the needle two or three times. Hold thread down with thumb, and put needle into fabric close to A, but not in the same hole. Pull to **WRONG** side, drawing up thread, forming a French Knot.



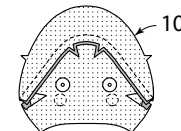
5. Stitch **DART SEAM**(s) in head front or face. Press dart open.



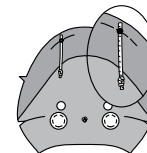
6. Apply 3/8" (9mm) **SAFETY EYES** at small dots, following manufacturer's directions.



7. FOR VIEW B – Pin FOREHEAD (10) to face, matching notches. Stitch. Press seam toward face, pressing forehead out.

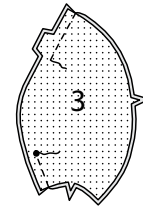


8. To make one antenna, form a knot in one end of 1/8" (3mm) rattail cord. Cut cord 1-1/4" (3.2cm) from lower end of knot. Make second antenna in the same manner. On **OUTSIDE**, pin antennae to outer edge of forehead at small dots. Baste in place.

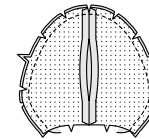


CONTINUE AS FOLLOWS FOR BOTH VIEWS

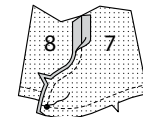
9. Stitch center back edges together of HEAD BACK (3), leaving an opening between notch and small dot. Back-stitching at ends to reinforce the seam.



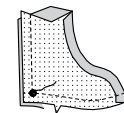
10. Stitch head back to head front at side edges. **TRIM SEAM.**



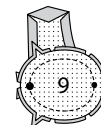
11. Machine-stitch lower edge of OUTER LEG (7) and INNER LEG (8) sections. Pin outer leg to inner leg along front edges, matching notches. Stitch from upper edge to small dot, back-stitching at dot to reinforce the seam.



12. Pin inner leg to outer leg at back edges. Stitch from upper edge to large dot, back-stitching at dot to reinforce the seam.



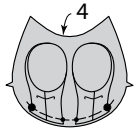
13. With **RIGHT** sides together and raw edges even, pin SOLE (9) to inner and outer leg, matching small dots, large dots, and notches. Stitch, clipping to stitching as necessary.



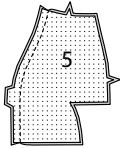
14. Turn legs. **STUFF.** Fold legs along foldline. Baste raw edges together.



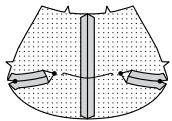
15. On OUTSIDE, pin legs to BODY FRONT (4), matching small and large dots. Baste.



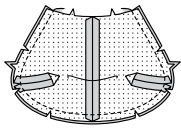
16. Stitch center back edges of BODY BACK (5).



17. Make **DART SEAM**(s) stitching from outer small dot to point, back-stitching at outer small dot to reinforce the seam. Press seam open.



18. Pin body front to body back at side edges, matching centers and notches. Stitch. **TRIM SEAM.** Turn body.



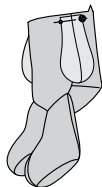
19. Fold ARM (6) with right sides together, matching notches. Stitch, leaving edge with small and large dots open. **TRIM SEAM.**



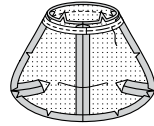
20. Turn arm; **STUFF.** Fold arm along fold lines; baste raw edges together.



21. On OUTSIDE, pin arms to body, matching small and large dots. Baste in place.



22. Cut a piece of 1/4" (6mm) twill tape the length of the body neck edge, plus 1/4" (6mm). On INSIDE, machine-baste tape to neck edge of body with center of tape along seamline, lapping at center back seam. With RIGHT sides together and raw edges even, pin head to body, matching centers, seams, and notches. Stitch.

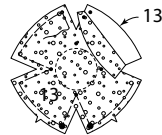


23. Turn doll. **STUFF** through opening in head back. Slipstitch opening closed.

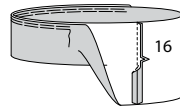


HAT C, D

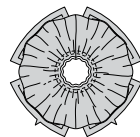
1. Pin foam stabilizer to WRONG side of HAT TOP (13). Stitch along center stitching line. Baste along remaining stitching lines.



2. **FOR VIEW D** – Stitch notched ends of LOWER ROSE RUFFLE (16). Fold ruffle in half with WRONG sides together; **GATHER** raw edges together.

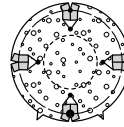


3. On OUTSIDE, pin ruffle to hat top, placing inner gathering stitches along center stitching and seam between center back edges, pulling up gathering stitches to fit. Stitch along stitching line over previous stitching.

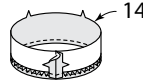


CONTINUE AS FOLLOWS FOR BOTH VIEWS

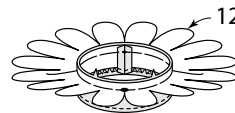
4. Make **DART SEAM**(s) in hat top from outer seamline to inner small dots, back-stitching at outer seamline to reinforce the seams. Press seams open.



5. Zigzag or overlock stitch lower edge of HAT BAND (14). Press up lower edge of band along 1/4" (6mm) seamline. Stitch in place 1/8" (3mm) from pressed edge. Stitch center back edges together.



6. **FOR VIEW C** – Cut out center circle of PETALS (12). Pin WRONG side of petals to RIGHT side of hat band, matching small dots, large dots, and notches. Baste.

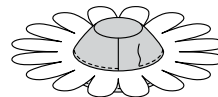


CONTINUE AS FOLLOWS FOR BOTH VIEWS

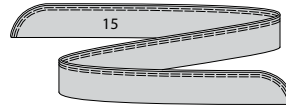
7. With RIGHT sides together and raw edges even, pin upper edge of hat band to lower edge of hat top, matching small dots, large dots, and notches. Stitch. Clip seam allowance. Press seam toward hat top.



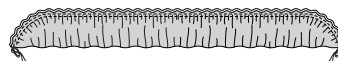
8. On OUTSIDE, **EDGESTITCH** hat top close to seamline through all thicknesses.



9. **FOR VIEW D** – Fold ROSE PETAL SPIRAL (15) in half lengthwise, with WRONG sides together; pin. **GATHER** raw edges together.



10. Pull up gathering stitches to measure 16-1/2" (42.3cm). Fasten thread securely.



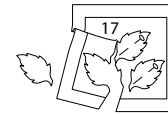
11. Starting at one end, roll gathered edge of flower, hand-tacking in the process.



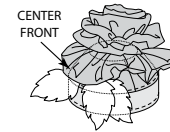
12. Pin rose to center of hat top. Hand-tack in place.



13. Cut tissue block, LEAF (17) along outer solid line. Pin pattern to RIGHT side of fabric. Cut out each leaf.



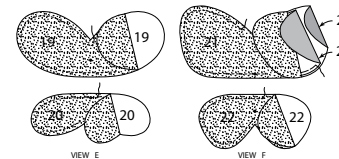
14. Hand-tack end of each leaf to lower edge of hat top under lower rose ruffle LEFT of center front, as shown, or as desired.



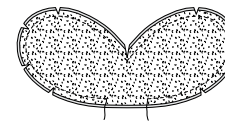
CENTER FRONT

WINGS E, F

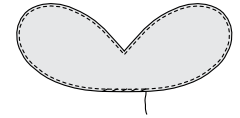
1. **VIEW F** – Pin upper wing overlay (21) to upper wing, right sides up. Baste outer edge. **VIEW E, F** – Pin interfacing to WRONG side of one UPPER WING (19) and one LOWER WING (20) section for View E, or one prepared UPPER WING (21) and one LOWER WING (22) section for View F. Stitch in place along seamline.



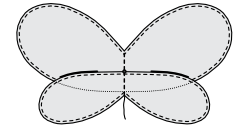
2. With RIGHT sides together and raw edges even, pin wing sections to wing facing sections. Stitch, leaving an opening for turning. **TRIM SEAM.**



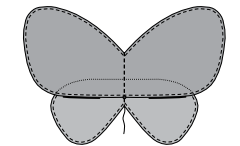
3. Turn wings; press. Slipstitch opening closed. **EDGESTITCH** close to outer edges.



4. **FOR VIEW E** – Pin WRONG side of lower wing to RIGHT side of upper wing matching small dots and stitching lines. Stitch along stitching line. This is the front of the wing set.

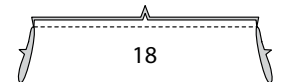


5. **FOR VIEW F** – Pin WRONG side of upper wing to RIGHT side of lower wing matching small dots and stitching lines. Stitch along stitching line. This is the front of the wing set.

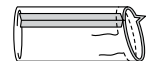


CONTINUE AS FOLLOWS FOR BOTH VIEWS

6. Fold BAND (18) in half lengthwise, with RIGHT sides together. Stitch long edges in a 1/4" (1cm) seam.



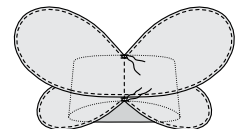
7. Press seam open. With RIGHT sides together, insert hand through tube, grabbing end. Draw end through tube to meet opposite end, matching notches and seams, having raw edges even, as shown. Stitch, leaving an opening to turn.



8. Turn band RIGHT side out. Slipstitch opening closed. Press lightly.



9. Pin front of wing set to back of band with RIGHT sides together. Hand-tack band to wing set at center back at upper and lower edges, as shown. **Stretch band over body of doll, as shown on envelope.**





Congrats!

You've completed your sewing adventure

SHARE YOUR LOOK



Post your pattern and tag us
[@simplicity_creative_group](#) and [#simplicitypatterns](#)
for a chance to be featured on our social media.

Look for more PDF patterns at [simplicity.com](https://www.simplicity.com)

Have a question or need help with your sewing project call us at
1-800-782-0323

McCall's
by **design**_{group}

McCall's ©2024 a division of IG Design Group Americas Inc. • Atlanta, GA 30342 USA www.thedesigngroup.com • All Rights Reserved. www.mccall.com • Made in the U.S.A. Fabriqué aux États-Unis.

To be used for individual private home use only and not for commercial or manufacturing purposes. • A usage privé seulement et non à des fins commerciales ou de production en série. • Para uso privado solamente, no se puede utilizar con propósitos de comercialización o de producción en serie.