



Designed and printed in USA

Shop all the pattern brands you love @

**Simplicity**.com



## 11½" (29CM) FASHION DOLL CLOTHES

**Suggested Fabrics:** A, B, C, D, E, F, G, H: Challis, Charmeuse, Cotton/Cotton Blends, Novelty Satin/Sateen.

**Notions:** A, B, C, D, E: ½" (1.3cm) hook and loop tape: 2¾" (7cm) length for A, B, C, 3¼" (8cm) length for D, 2" (5cm) length for E. **Also for A, B, C:** 7" (18cm) length of ¼" - ¼" (3mm - 6mm) ribbon (cut to size). **Also for A:** ¾ yd. (0.3m) ¼" - ½" (6mm - 1.3cm) trim (optional). **Also for B:** ¾ yd. (0.3m) fur, feather or fringe trim. **Also for D, E and H:** One ¼" (6mm) snap. **F, G:** Two ¼" (6mm) snaps. **Also for G:** Two ¼" (6mm) beads or doll buttons, ½ yd. (0.5m) ¼" - ½" (6mm - 1.3cm) trim (optional).

### Dress A

45" - ¾ yd.

### Dress E

45" - ¼ yd.

**Contrast 1 (Skirt):** 5" x 10" fabric remnant

**Contrast 2 (Ruffle):** 3" x 23" fabric remnant

### Dress B

45" - ¼ yd.

### Top F

45" - ¼ yd.

### Top C

45" - ¼ yd.

### Jacket G

45" - ¾ yd.

### Dress D

45" - ½ yd.

### Pants H

45" - ¾ yd.

## VÊTEMENTS POUR POUPÉE-MANNEQUIN DE 29CM

**Tissus Conseillés:** A, B, C, D, E, F, G, H: Challis, Charmeuse, Coton/Cotonnades, Satin de fantaisie/Satin de coton.

**Mercerie:** A, B, C, D, E: Ruban autoagrippant de 1.3cm: 7cm pour A, B, C, 8cm pour D, 5cm pour E. **Aussi pour A, B, C:** 7cm de ruban de 3mm - 6mm (coupé à la taille). **Aussi pour A:** 0.3m de garniture de 6mm - 1.3cm (facultatif). **Aussi pour B:** 0.3m de garniture en fourrure, plumes ou franges. **Aussi pour D, E et H:** 1 pression de 6mm. **F, G:** 2 pressions de 6mm. **Aussi pour G:** 2 perles ou boutons de poupée de 6mm, 0.5m de garniture de 6mm - 1.3cm (facultatif).

### Robe A

115cm\* - 0.3

### Robe E

115cm\* - 0.2m

**Contraste 1 (Jupe):** Morceau de tissu de 13cm x 26cm

**Contraste 2 (Volant):** Morceau de tissu de 8cm x 59cm

### Robe B

115cm\* - 0.2m

### Haut F

115cm\* - 0.2m

### Haut C

115cm\* - 0.2m

### Veste G

115cm\* - 0.3m

### Robe D

115cm\* - 0.3m

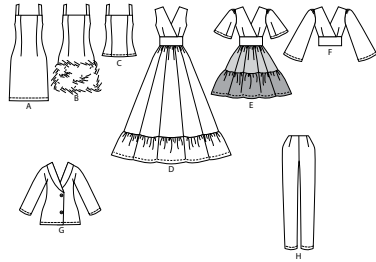
### Pantalon H

115cm\* - 0.3m

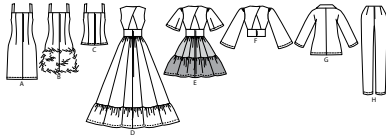
\*with nap \*\*without nap

\*avec sens \*\*sans sens

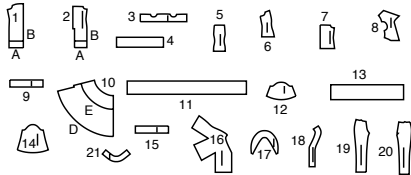
**FRONT**



**BACK**

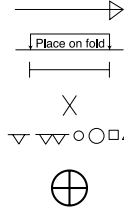


21 PATTERN PIECES



- 1 FRONT - A,B
- 2 BACK - A,B
- 3 FACING - A,B,C
- 4 GUIDE FOR TRIM - B
- 5 FRONT - C
- 6 SIDE FRONT - C
- 7 BACK - C
- 8 BODICE - D,E,F
- 9 WAISTBAND - D,E
- 10 SKIRT - D,E
- 11 RUFFLE - D
- 12 SLEEVE - E
- 13 RUFFLE - E
- 14 SLEEVE - F
- 15 WAISTBAND - F
- 16 JACKET - G
- 17 COLLAR - G
- 18 FACING - G
- 19 FRONT - H
- 20 BACK - H
- 21 FACING - H

**PATTERN MARKINGS**



**GRAINLINE:** Place on straight grain of fabric, parallel to selvage or fold.  
**FOLDLINE:** Place line on fold of fabric.  
**BUTTONHOLE MARKING:** Indicates exact length and placement of buttonholes.  
**BUTTON MARKING:** Indicates button placement.  
**NOTCHES AND SYMBOLS:** For matching seams and construction details.  
 Indicates the Bustline, Waistline, Hip and/or Biceps. Measurements refer to circumference of Finished Garment (Body Measurement + Wearing Ease + Design Ease). Adjust pattern if necessary. The measurement excludes pleats, tucks, darts and seam allowances.  
**SEAM ALLOWANCE:** 5/8" (1.5cm) included unless otherwise indicated, but not printed on tissue.

**ADJUST IF NECESSARY**

Lengthen or Shorten at adjustment lines (==) or where indicated on pattern. If substantial length is added, you may need to purchase additional fabric.  
**TO SHORTEN:** Crease along adjustment line. Make a fold half the amount needed. Tape in place.  
**TO LENGTHEN:** Slash between adjustment lines. Spread amount as needed, keeping edges parallel. Tape over paper.  
 When Alteration lines are not on tissue, lengthen or shorten at lower edge.

**CUTTING AND MARKING**

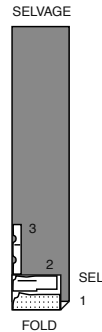
**SHRINK FABRIC** if not labeled pre-shrunk. Press.  
**CIRCLE LAYOUT** for View, Size, Fabric Width.  
 Use **WITH NAP** layout for fabrics with one-way designs, nap, pile or surface shading. Because most knits have surface shading, a with nap layout is used.  
 For **DOUBLE THICKNESS (WITH FOLD)** - fold fabric with right sides together.  
**\* DOUBLE THICKNESS (WITHOUT FOLD)** - For fabrics with nap, fold fabric crosswise, right sides together. Mark as shown. Cut along crosswise fold of fabric (A). Turn upper layer 180° so arrows go in same direction and place over lower layer, right sides together (B).  
 For **SINGLE THICKNESS** - place fabric right side up. (For Fur Pile fabrics, place pile side down.)  
 ★ Cut other pieces first, allowing enough fabric to cut this piece. Open fabric. For "Cut 1" pieces, cut piece once on single layer of fabric with piece face up on right side of fabric.  
 Pattern may have cutting lines for several sizes. Select the proper cutting line or pattern pieces for your size.  
 Before **CUTTING** place all pieces on fabric according to layout. Pin. (**Layouts show approximate position of pattern pieces; position may vary according to your pattern size.**) Cut **ACCURATELY**, cutting notches outward.  
 Before removing pattern, **TRANSFER MARKINGS** and lines of construction to Wrong Side of fabric, using the Pin and Chalk Pencil method or Tracing Paper and Dressmaker Wheel. Markings needed on right side of fabric should be thread traced.  
**NOTE:** Broken-line boxes (a! b! c!) in layouts represent pieces cut by measurements provided.

**CUTTING LAYOUTS**

RIGHT SIDE OF PATTERN	WRONG SIDE OF PATTERN	RIGHT SIDE OF FABRIC	WRONG SIDE OF FABRIC
-----------------------	-----------------------	----------------------	----------------------

**DRESS A**  
use pieces: 1 2 3

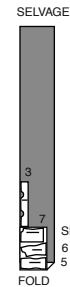
45" (115 cm)  
with nap  
all sizes



**TOP C**

use pieces: 3 5 6 7

45" (115 cm)  
with nap  
all sizes



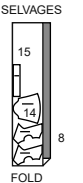
**CONTRAST 2**

Cut piece 13 from 3" X 23" (7 cm X 57 cm) fabric remnant

**TOP F**

use pieces: 8 14 15

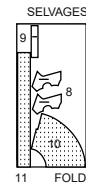
45" (115 cm)  
with nap  
all sizes



**DRESS D**

use pieces: 8 9 10 11

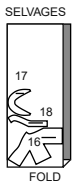
45" (115 cm)  
with nap  
all sizes



**JACKET G**

use pieces: 16 17 18

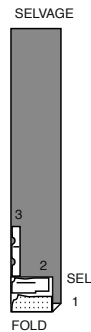
45" (115 cm)  
with nap  
all sizes



**DRESS B**

use pieces: 1 2 3

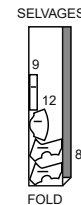
45" (115 cm)  
with nap  
all sizes



**DRESS E**

use pieces: 8 9 12

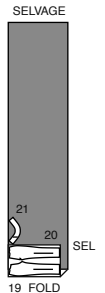
45" (115 cm)  
with nap  
all sizes



**PANTS H**

use pieces: 19 20 21

45" (115 cm)  
with nap  
all sizes

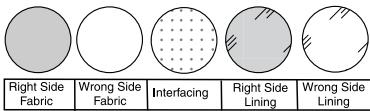


**CONTRAST 1**

Cut piece 10 from 5" X 10" (12 cm X 26 cm) fabric remnant

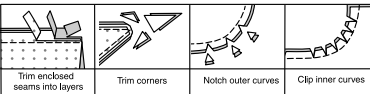
**SEWING INFORMATION**

**FABRIC KEY**



**SEAM ALLOWANCES**

Use 1/4" (6mm) seam allowances unless otherwise indicated.



**PIN AND FIT**

Pin or baste seams, **RIGHT SIDE TOGETHER**, matching notches. Fit garment before stitching major seams.

**PRESS**

Press seam allowances flat; then open unless otherwise stated. Clip where necessary so they lie flat.

**GLOSSARY**

Sewing methods in **BOLD TYPE** have Sewing Tutorial Video available. Scan **QR CODE** to watch videos:

**DART** - see **Darts**: "sewing double pointed dart" video.

**DART** - see **Darts**: "sewing flat dart" video.

**EASE/GATHER** - see **Gathering**: "sewing two row gathers" video.

**EDGESTITCH** - see **Machine Stitches**: "how to edgestitch" video.

**NARROW HEM** - see **Hems**: "sewing narrow hems" video.

**STAYSTITCH** - see **Machine Stitches**: "how to do stay-stitching" video.

**TACK** - See **Hand-Stitching**: "how to tack" video.

**UNDERSTITCH** - see **Machine Stitches**: "how to understitch" video.

**PATTERN PIECES WILL BE IDENTIFIED BY NUMBERS THE FIRST TIME THEY ARE USED.**

**STITCH 1/4" (6MM) SEAMS WITH RIGHT SIDES TOGETHER UNLESS OTHERWISE STATED.**

**SEWING TUTORIALS**



Build your skills viewing short, easy-to-follow videos at [simplicity.com/sewingtutorials](http://simplicity.com/sewingtutorials)

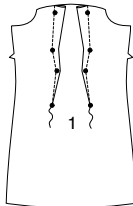
**DRESS A, B OR TOP C**

**NOTE:** The first view mentioned will be illustrated unless otherwise indicated.

**FRONT AND BACK**

**1. VIEW A, B:**

Stitch flat **DART** in **FRONT** (1), bringing broken lines and small dots together; press toward center.



**2.** Make double-pointed **DART** in each **BACK** (2) section, bringing broken lines and small dots together; press toward center.

To **REINFORCE** right back section, using fine stitches, stitch along center back seamline for about 1/2" (1.3cm) on each side of large dot, stitching through large dot.

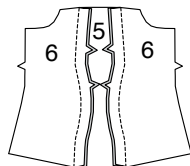
Stitch back sections to front at sides.

If you prefer, finish back extension edges with a zigzag or overlock stitch.



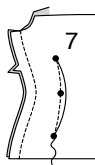
**3. VIEW C:**

Pin **SIDE FRONT** (6) sections to **FRONT** (5), matching notches; press seams toward center.



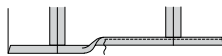
**4.** Make double-pointed **DART** in each **BACK** (7) section; press toward center.

Stitch backs to front at sides.



**5. ALL VIEWS:**

Make a 1/2" (1.3cm) **NARROW HEM** on lower edge, turning in 1/4" (6mm) twice.



**TRIM**

**6. VIEW A:**

Optional Trim- On outside, stitch trim to lower edge of dress, having raw edges even.

**NOTE:** For feather trim, turn ribbon lip to underside before applying OR use ribbon as part of the trim and stitch close to both long edges.



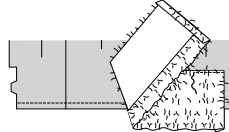
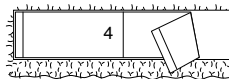
**7. VIEW B:**

Cut trim the length of **GUIDE FOR TRIM B** (4).

On outside, pin trim to lower edge of dress.

To finish back edges of trim, turn under ends 1/4" (6mm) for fur or fringe, OR cut trim even with center back seam lines for feathers.

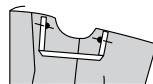
Stitch upper edge of trim in place.



**STRAPS AND FACING**

**8.** For shoulder straps, cut two pieces of ribbon, each 2-3/4" (7cm) long.

Baste ends of straps to upper edge of garment, having inner edges at small dots, clearing armhole seam allowances.

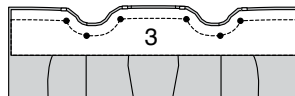


**9.** With **RIGHT** sides together and raw edges even, pin **FACING** (3) to upper edge of garment, placing lower small dots at side seams, matching remaining small dots.

Stitch upper edge, pivoting at small dots.

Trim corners.

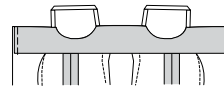
Optional: **UNDERSTITCH** facing as far as possible.



**10.** Turn facing to inside; press.

Stitch 1/8" (3mm) from raw back edges.

If you prefer, **TACK** lower edge of facing to seams.

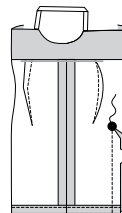


**BACK EDGES**

**11. VIEWS A, B:**

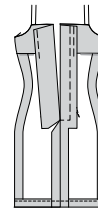
Stitch center back seam below large dot, being careful not to catch in free edges of trim for View B.

Clip right back seam allowance to reinforcement stitching at large dot, being careful not to clip through stitching.



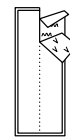
**12.** Press seam open, turning left back opening edge to inside along center back, forming facing; press.

Baste facing in place.



**13.** Cut one piece of hook and loop tape 2-3/4" (7cm) long.

Cut tape in half lengthwise. Separate tape.

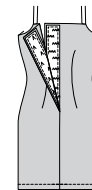


**14.** On inside, pin stiff section to left back opening edge, having outer edge along pressed edge, as shown.

Stitch in place.

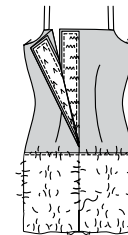
On outside, pin soft section to right back opening edge, having outer edge along raw edge, as shown. Stitch in place.

If you prefer, on outside, stitch lower edges of tape along seam line.



**15. VIEW B:**

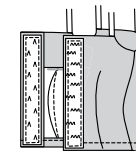
For faux fur trim - On outside, **SLIPSTITCH** ends of fur together.



**16. VIEW C:**

On inside, pin stiff section to left back opening edge, having outer edge along pressed edge, as shown. Stitch in place.

On outside, pin soft section to right back opening edge, having outer edge along raw edge, as shown. Stitch in place.



**DRESS D, E, AND TOP F**

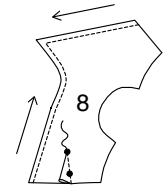
**BODICE**

**NOTE:** You have cut out four bodice sections. Two of the bodice sections will be used as the bodice. The remaining sections will be used and illustrated as lining.

The first view mentioned will be illustrated unless otherwise indicated.

**1. STAYSTITCH** front, neck, and back edges of **BODICE** (8) section 1/8" (3mm) from raw edges in direction of arrows. (Staystitching will not be shown in the following illustrations.)

Make flat **DART**, bringing broken lines and small dots together; press toward center.



**2.** With right sides together and raw edges even, pin lining to bodice.

Stitch front, neck, and back edges.

Trim corners; clip curves if necessary.



**3. UNDERSTITCH** lining as far as possible.

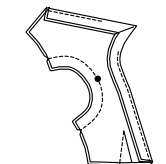
Turn lining to inside; press.



**4. VIEW D:**

With right sides together and raw edges even, stitch lining and bodice together at armhole edges, matching small dots.

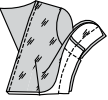
Clip curves if necessary.



5. Turn bodice right side.

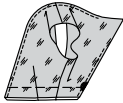
Open out sides.

Pin bodice front and back fabric and front and back lining sections together, matching armhole seams; stitch entire seam.



6. Turn bodice; press.

Baste raw edges together.



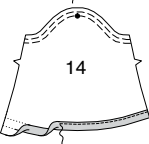
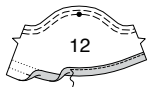
7. VIEWS E, F:

With wrong sides together and raw edges even, baste bodice to lining along raw edges, matching dart seams and small dots.



8. GATHER upper half of SLEEVE (12 or 14) cap, stitching along 1/4" (6mm) seam line and 1/8" (3mm) away within seam allowance.

Make a 1/2" (1.3cm) NARROW HEM on lower edge of sleeve, turning in 1/4" (6mm) twice.



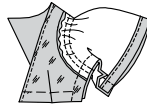
9. Pin sleeve to armhole edge, matching small dots.

Adjust gathering stitches to fit within upper third of sleeve; baste. Stitch.

Turn seam toward bodice.



10. Pin entire underarm and side seam, matching armhole seams; stitch.



11. ALL VIEWS:

On outside, lap right bodice over left, matching centers front and having raw edges even.

Baste lower front edges together.

On inside, invisibly hand-tack right bodice to left 3/4" (2cm) above lower raw edges.

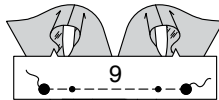


**WAISTBAND**

12. VIEWS D, E:

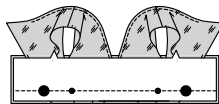
With right sides together and raw edges even, baste one WAISTBAND (9) section to lower edge of bodice, matching centers front and large dots, placing small dots at side seams.

The remaining waistband section will be used as the facing.



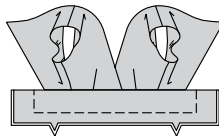
13. With right sides together and raw edges even, pin facing to waistband (over bodice lining) matching small and large dots.

Stitch edge with small and large dots.



14. Press waistband and facing away from bodice; press.

Baste raw edges together.

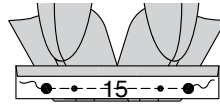


15. VIEW F:

Press under 1/4" (6mm) on long unmarked edge of both WAISTBAND (15) sections.

With right sides together, baste one section to lower edge of bodice, matching centers front and large dots, placing small dots at side seams.

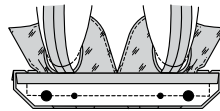
The remaining waistband section will be used as the facing.



16. With right sides together and raw edges even, pin facing to waistband (over bodice lining) matching small and large dots.

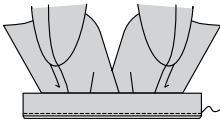
Stitch side and lower edges, leaving pressed edges open, being careful not to catch in free edges of bodice.

Trim corners.



17. Turn waistband right side out.

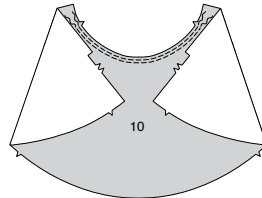
EDGESTITCH pressed edges of waistband and facing together.



**SKIRT**

18. VIEW D:

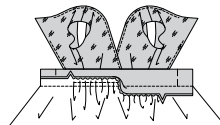
GATHER upper edge of SKIRT (10) between notches, stitching along 1/4" (6mm) seam line and 1/8" (3mm) away within seam allowance.



19. With right sides together and raw edges even, pin skirt to lower edge of waistband, matching centers front and notches.

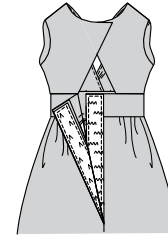
Adjust gathering stitches to fit; baste. Stitch.

Press skirt away from band.



20. Cut one piece of hook and loop tape 3-1/4" (8.3cm) long.

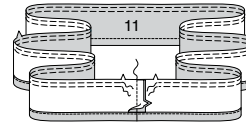
Apply tape and stitch center back seam of skirt same as for Dress A, B- see steps 13 and 14.



21. Stitch ends of RUFFLE (11).

Make a 1/2" (1.3cm) NARROW HEM on lower edge.

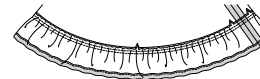
GATHER upper edge between notches same as for skirt.



22. Pin ruffle to lower edge of skirt, matching centers and notches.

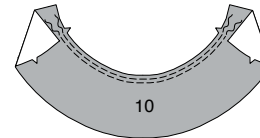
Adjust gathers to fit; baste. Stitch.

Press ruffle out, pressing seam toward skirt.



23. VIEW E:

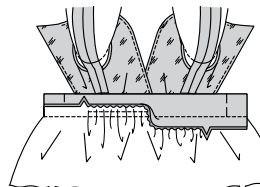
GATHER upper edge of SKIRT (10) between notches, stitching along 1/4" (6mm) seam line and 1/8" (3mm) away within seam allowance.



24. With right sides together and raw edges even, pin upper skirt to lower edge of waistband, matching centers front and notches.

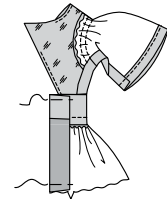
Adjust gathering stitches to fit; baste. Stitch.

Press skirt away from band.



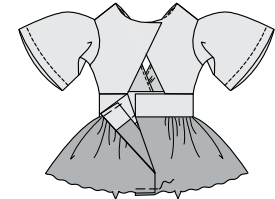
25. Turn Left back opening edge to inside along center back; press.

Baste across upper and lower edges.



26. Lap lower left back of skirt over right, matching centers back.

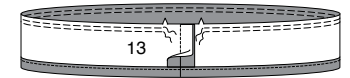
Baste across lower edges of back.



27. Stitch ends of RUFFLE (13).

Make a 1/2" (1.3cm) NARROW HEM on lower edge.

GATHER upper edge between notches same as for skirt.

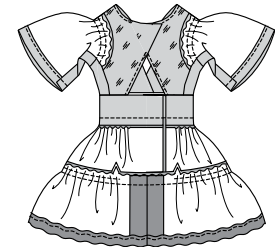


28. Pin ruffle to lower edge of skirt, matching centers and notches.

Adjust gathers to fit; baste.

Stitch.

Press ruffle out, pressing seam toward skirt.



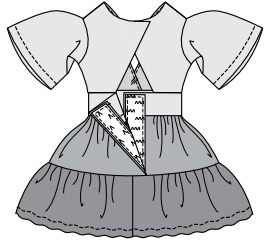
29. Cut one piece of hook and loop tape 2" (5cm) long.

Cut tape in half lengthwise. Separate tape.



**30.** On inside, pin stiff section to left back opening edge, having outer edge along pressed edge, as shown. Stitch in place.

On outside, pin soft section to right back opening edge, having outer edge along raw edge, as shown. Stitch in place.



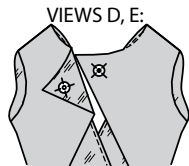
**FINISHING**

**31. VIEWS D, E:**

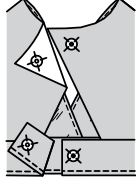
Lap left neck edge over right, matching centers back. Mark snap placement. Sew snaps at markings.

**VIEW F:**

Lap left neck edge and waistband over right, matching centers back. Mark snap placement. Sew snaps at markings.



**VIEW F:**

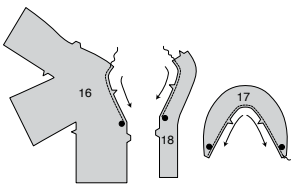


**JACKET G**

**JACKET**

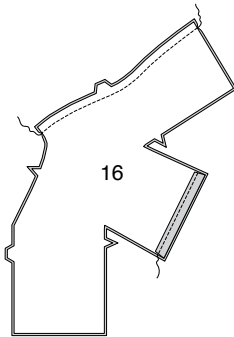
**1. STAYSTITCH** neck edge of JACKET (16), FACING (18) and COLLAR (17) 1/8" (3mm) from raw edges in direction of arrows.

(Staystitching will not be shown in the following illustrations.)



**2.** Stitch back sections together at center back seam.

Make a 1/2" (1.3cm) **NARROW HEM** on lower edge of sleeve, turning in 1/4" (6mm) twice.



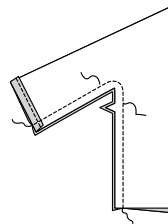
**3. OPTIONAL-** Stitch trim to lower edge of sleeve.



**4.** Pin entire underarm and side seam; stitch.

**REINFORCE** seam along curves.

Clip curves if necessary.

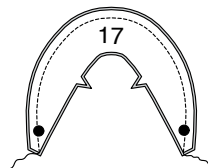


**COLLAR**

**5.** Pin collar sections together, having raw edge even.

Stitch, leaving notched edge open, being careful not to stretch out fabric.

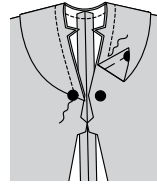
Clip curves if necessary.



**6.** Turn collar; press.

Baste raw edges together.

On outside, baste collar to neck edge of jacket, matching centers back and large dots.



**FACING**

**7.** Stitch center back seam of facing sections.

If you prefer, finish outer unnotched edge of facing with a zigzag or overlock over seam.

With right sides together and raw edges even, pin facing to jacket, matching centers back and large dots.

Stitch lower edges 1/2" (1.3cm) from raw edge, pivoting at corners to stitch along 1/4" (6mm) seamline on front and neck edges.

Trim corners.

Clip curves if necessary.

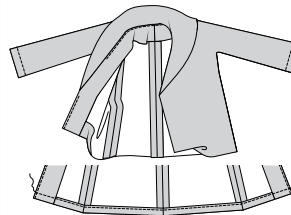


**8. UNDERSTITCH** facing as far as possible.

Turn facing to inside.

Press, pressing up hem.

Stitch a 1/2" (1.3cm) **NARROW HEM** between opening edges.



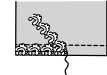
**FINISHING**

**9.** Sew snaps to underside of right front and outside of left front at small dots, as shown.

Sew buttons or beads to right front over small dots.



**10. OPTIONAL-** Pin trim to lower edge of jacket, cutting ends of trim to fit OR turning under ends at front opening edges. Stitch in place.

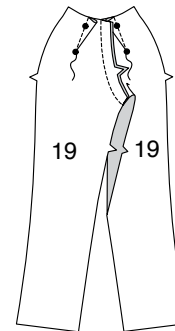


**PANTS H**

**1.** Stitch flat **DART** in each FRONT (19) section, bringing broken lines and small dots together; press toward center.

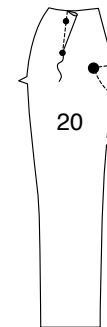
Stitch center front seam of front sections.

Clip curves if necessary.



**2.** To reinforce right BACK (20) section, using fine stitches, stitch along seam line on inner corner, pivoting at large dot.

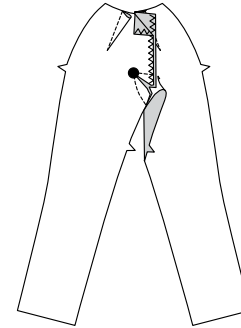
Make flat **DART** same as for front; press toward center.



**3.** To finish each extension, zigzag or overlock over raw edge, as shown.

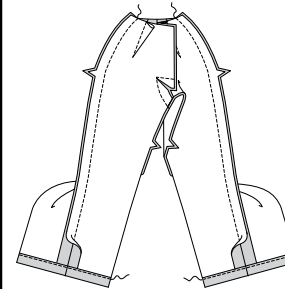
Stitch center back seam of back sections below large dot.

Clip right back seam allowance to reinforcement stitching at large dot, being careful not to clip through stitching.



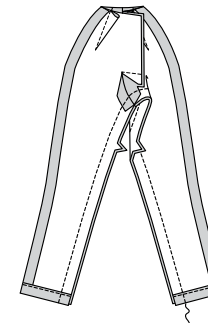
**4.** Stitch back to front at sides.

Make a 1/2" (1.3cm) **NARROW HEM** on lower edge, turning up 1/4" (6mm) twice.



**5.** Press or open out crotch seams.

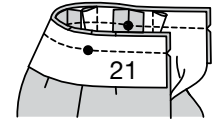
Stitch inner leg seams, matching center seams.



**WAISTBAND AND FINISHING**

**6.** With right sides together and raw edges even, pin FACING (21) to upper edge of pants, placing small dots at side seams, matching centers. Stitch waist seam.

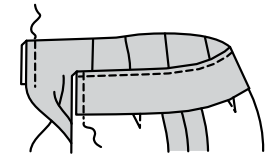
**UNDERSTITCH** facing.



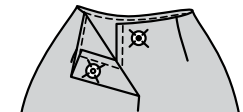
**7.** Turn facing to inside; press.

Stitch 1/8" (3mm) from raw back edges.

If you prefer, **TACK** lower edge of facing to seams.



**8.** Sew snaps to back at small dots, as shown.





# Congrats!

You've completed your sewing adventure

---

**SHARE  
YOUR** LOOK



Post your pattern and tag us  
[@simplicity\\_creative\\_group](#) and [#simplicitypatterns](#)  
for a chance to be featured on our social media.

Look for more PDF patterns at [simplicity.com](https://www.simplicity.com)

Have a question or need help with your sewing project call us at  
1-800-782-0323

**McCall's**  
by **design**<sub>group</sub>

McCall's ©2024 a division of IG Design Group Americas Inc. • Atlanta, GA 30342 USA [www.thedesigngroup.com](http://www.thedesigngroup.com) • All Rights Reserved. [www.mccall.com](http://www.mccall.com) • Made in the U.S.A. Fabriqué aux États-Unis.

To be used for individual private home use only and not for commercial or manufacturing purposes. • A usage privé seulement et non à des fins commerciales ou de production en série. • Para uso privado solamente, no se puede utilizar con propósitos de comercialización o de producción en serie.