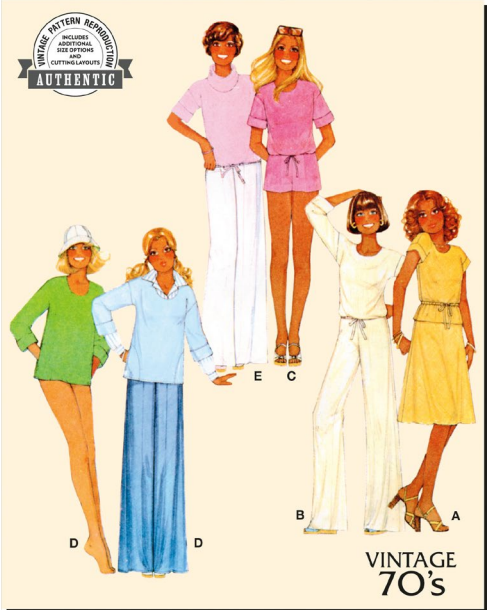


**McCall's**

M8493



VINTAGE  
70's

Designed and  
printed in USA



Very Easy

Très Facile

**MISSES' KNIT TOPS, SKIRT, PANTS AND SHORTS**

**Suggested Fabrics:** Unbonded Stretchable Knits such as Cotton Knits, Knitted Terry, Knitted Velour, Sweater Knits, Wool or Synthetic Jersey. See Stretch Gauge.

**Notions:** **View A Skirt:** 1½ yd. (1.2m) of ½" (1.3cm) elastic. **View B,C,E:** ¾ yd. (0.6m) of ½" (1.3cm) elastic. **View A Top and Skirt, B,C,E:** Optional stretch lace.

Sizes	XS (4-6)	S (8-10)	M (12-14)	L (16-18)
European	30-32	34-36	38-40	42-44

**BODY MEASUREMENTS: Select pattern size based on body measurements**

	XS 29½-30½	S 31½-32½	M 34-36	L 38-40	Ins.
Bust	29½-30½	31½-32½	34-36	38-40	Ins.
Waist	22-23	24-25	26½-28	30-32	"
Hip-9" below waist	31½-32½	33½-34½	36-38	40-42	"
Back-neck to waist	15¼-15½	15¾-16	16¼-16½	16¾-17	"

<b>View A Top</b>	60**	1	1¾	1¾	1¾	Yds.
<b>View A Skirt</b>	60**	1¾	1¾	1¾	1¾	Yds.
<b>View B Top</b>	60**	1½	1½	1¾	1¾	Yds.
<b>View B,E Pants</b>	60**	1¾	1¾	1¾	2¾	Yds.
<b>View C Top</b>	60**	1¼	1¼	1¾	1¾	Yds.
<b>View C Shorts</b>	60**	¾	¾	¾	¾	Yd.
<b>View D Top</b>	60**	1¾	1¾	1¾	1¾	Yds.
<b>View E Top</b>	60**	1¾	1¾	1¾	2	Yds.

**FINISHED GARMENT MEASUREMENTS (Includes Design and Wearing Ease)**

<b>View A,B,C,D,E Bust</b>	35	37	40½	44½	Ins.
<b>View B,C,E Hip</b>	34	36	39½	43½	"
<b>Finished back length from base of neck</b>					
<b>View A,B,C Top</b>	22½	23	23½	24	Ins.
<b>View D,E Top</b>	26½	27	27½	28	"
<b>Finished back length from waist</b>					
<b>View A Skirt</b>	26¾	26¾	26¾	26¾	Ins.
<b>Finished side length from waist</b>					
<b>View B,E Pants</b>	42	42½	43	43½	Ins.

\*with nap \*\*without nap

**HAUTS, JUPE, PANTALON ET SHORT EN TRICOT POUR JEUNES FEMMES**

**Tissus Conseillés:** Tricots extensibles non liés tels que Tricots de coton, Tissus éponge, Tricot velour, Tricots pour chandails, Laine ou jersey synthétique. Reportez-vous au taux d'élasticité.

**Merçerie:** **Modèle A Jupe:** 1.2m d'élastique de 1.3cm. **Modèle B,C,E:** 0.6m d'élastique de 1.3cm. **Modèle A Haut et Jupe, B,C,E:** Dentelle extensible (facultatif).

Tailles	TP/XS 32-34	P/S 36-38	M/M 40-42	G/L 44-46
Françaises	32-34	36-38	40-42	44-46
Européen	30-32	34-36	38-40	42-44

**MESURES DU CORPS: Choisissez la taille du patron basée sur les mesures du corps**

	TP/XS 75-77	P/S 80-83	M/M 87-92	G/L 97-102	cm
Poitrine	75-77	80-83	87-92	97-102	cm
Taille	56-58	61-64	67-71	76-81	"
Hanches (23cm au-dessous de la taille)	80-83	85-88	92-97	102-107	cm
Dos du cou à la taille	39-39.5	40-40.5	41.5-42	42.5-43	"

<b>Modèle A Haut</b>	150cm*	0.9	1.2	1.3	1.3	m
<b>Modèle A Jupe</b>	150cm*	1.6	1.7	1.7	1.7	m
<b>Modèle B Haut</b>	150cm*	1.4	1.4	1.4	1.5	m
<b>Modèle B,E Pantalon</b>	150cm*	1.3	1.3	1.6	2.1	m
<b>Modèle C Haut</b>	150cm*	1.2	1.2	1.3	1.3	m
<b>Modèle C Short</b>	150cm*	0.6	0.6	0.7	0.8	m
<b>Modèle D Haut</b>	150cm*	1.5	1.5	1.5	1.5	m
<b>Modèle E Haut</b>	150cm*	1.6	1.6	1.6	1.8	m

**MESURES DES VÊTEMENTS FINI (Motif et aisance de port compris)**

<b>Modèle A,B,C,D,E Poitrine</b>	89	94	103	113	cm
<b>Modèle B,C,E Hanches</b>	86	91	100	110	"
<b>Longueur finie – dos, votre nuque à l'ourlet</b>					
<b>Modèle A,B,C Haut</b>	57	58	60	61	cm
<b>Modèle D,E Haut</b>	67	69	70	71	"
<b>Longueur finie – dos, taille à l'ourlet</b>					
<b>Modèle A Jupe</b>	68	68	68	68	cm
<b>Longueur finie – côté, taille à l'ourlet</b>					
<b>Modèle B,E Pantalon</b>	107	108	109	110	cm

\*avec sens \*\*sans sens



A



B



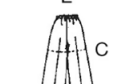
C



D



E



C



E

Use the 1 inch (2.54cm) box to ensure you are using rule at 100%

Utilisez la boîte de 2.54 cm pour vous assurer d'utiliser la règle à 100%.

Utilizar un cuadrado de 2.54 cm para asegurarse de estar usando la regla al 100%.

4" of crosswise folded fabric must **STRETCH** from here  
10 cm de tricot plié sur le travers et sur le droit-fil doivent s'étirer de cette limite à celle là  
10 cm de tejido de punto doblado (a lo largo y luego al través) deben estirarse desde acá

To Here 35%  
jusqu'ici 35%  
hasta acá 35%

When using the Pick-A-Knit® rule to measure your fabrics stretch capacity, rule must be viewed or printed at 100%.  
Quand vous utilisez le taux d'élasticité pour mesurer la capacité d'élasticité des tissus, le taux doit être visible ou imprimé à 100%.  
Al utilizar el calibre de elasticidad para medir la capacidad de elasticidad de las telas, el calibre debe estar visible o impreso al 100%.

5589

CAREFREE PATTERNS FROM McCALL'S

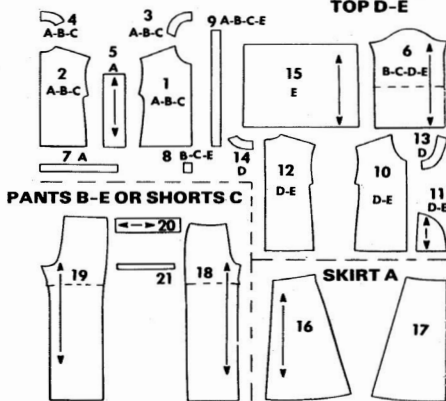
SELECT PATTERN PIECES FOR VIEW YOU HAVE CHOSEN

FOR VIEW YOU HAVE CHOSEN

21 PATTERN PIECES

TOP A-B-C

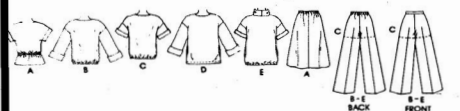
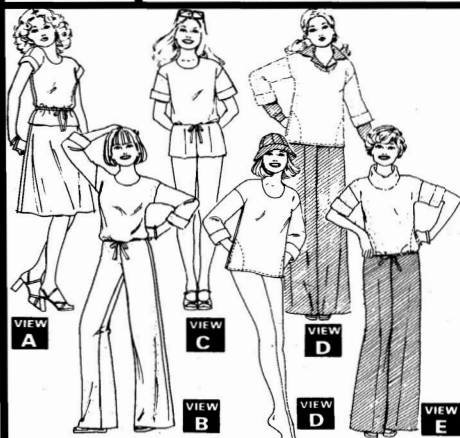
TOP D-E



PANTS B-E OR SHORTS C

SKIRT A

1. TOP FRONT
2. TOP BACK
3. FRONT NECK FACING
4. BACK NECK FACING
5. SLEEVE BAND
6. SLEEVE
7. CASING
8. FRONT FACING
9. DRAWSTRING
10. TOP FRONT
11. POCKET
12. TOP BACK
13. FRONT NECK FACING
14. BACK NECK FACING
15. COLLAR
16. SKIRT BACK
17. SKIRT FRONT
18. FRONT
19. BACK
20. FRONT WAISTBAND
21. BACK ELASTIC



HOW TO USE A McCALL'S CAREFREE PATTERN

STUDY THE PATTERN

Select pieces for VIEW you have chosen.

Check identification markings - Number, Size, Name and View - on each piece.

Understand the pattern markings.

Grainline: Place line on straight grain of fabric, an even distance from selvage.

Place on fold: Fold Line: Place on fold of fabric.

Cutting Line: For cutting.

Seam Line: For sewing.

Seam Allowance: Distance between cutting and seam lines is usually 5/8" (1.5cm).

Notches and Circles: For matching pattern pieces.

ADJUST IF NECESSARY \*

A pattern is made to fit specific body measurements, with extra ease for comfort and style.

Adjust pieces before placing on fabric. Back waist and finished garment lengths can be adjusted using



To Shorten: Crease pattern on Easy-Rule Guide. Fold pleat necessary amount. Tape in place.

To Lengthen: Cut pattern on dotted lines of Easy-Rule Guide. Spread necessary amount. Tape over paper.

NOTE THE MEASUREMENTS

Abbreviations "mm" and "cm" are metric equivalent for inches. They are provided for the convenience of those using the metric system of measurement.

1/8" (3mm) 1/2" (1.3cm) 1" (2.5cm)  
1/4" (6mm) 5/8" (1.5cm) 1 1/4" (3.1cm)  
3/8" (1cm) 3/4" (2cm) 2" (5cm)

LAYOUT FOR CUTTING

Shrink fabric not labeled pre-shrunk. Press.

Circle layout for View, Size, Fabric Width.

Use With Nap layout for fabrics with one-way designs, nap, pile or surface shading.

Use Without Nap layout for other fabrics.

Arrange fabric for cutting as shown on layout:

Double Thickness - fold fabric with Right Sides Together.

Single Thickness - place fabric Right Side Up.

Before cutting, place all pieces on fabric according to layout. Overlap margins. Pin.

CUTTING AND MARKING

Cut accurately through fabric and pattern on cutting line. Cut notches outward.

Before removing pattern, transfer markings to Wrong Side of fabric. One way which may be used quickly and safely on the widest range of fabrics is the Pin and Chalk Pencil method.\*

Questions about sewing... Write Meg Carter, The McCall Pattern Company, 230 Park Avenue, New York, New York 10017.

\*See McCall's Sewing Book for other adjustments and marking information.

CUTTING LAYOUTS

Black area denotes fabric.

Pattern pieces to be placed with printed side up.

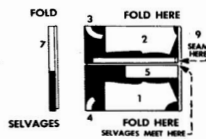
Pattern pieces to be placed with printed side down.

Pattern pieces to be cut a second time.

Metric measurements are given in parenthesis.

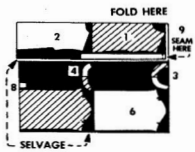
VIEW A TOP use pieces 1 thru 5; 7, 9

58" 60" (150cm) fabric with nap size petite



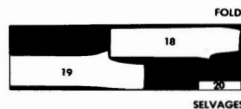
VIEW B TOP use pieces 1 thru 4; 6, 8, 9

58" 60" (150cm) fabric with nap all sizes



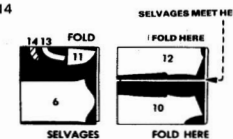
58" 60" (150cm) - CONTINUED

size large

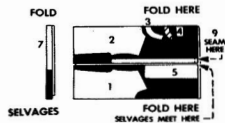


VIEW D TOP use pieces 6, 10 thru 14

58" 60" (150cm) fabric with nap all sizes

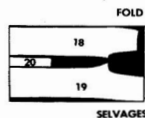


sizes small-medium-large



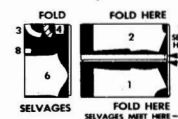
VIEW E PANTS use pieces 18 thru 21

58" 60" (150cm) fabric with nap sizes petite-small



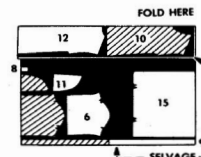
VIEW C TOP use pieces 1 thru 4; 6, 8, 9

58" 60" (150cm) fabric with nap all sizes



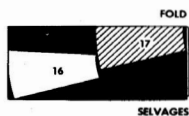
VIEW E TOP use pieces 6, 8 thru 12; 15

58" 60" (150cm) fabric with nap sizes petite-small-medium

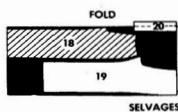


VIEW A SKIRT use pieces 16, 17

58" 60" (150cm) fabric with nap all sizes

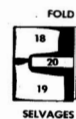


size medium

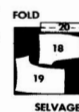


VIEW C SHORTS use pieces 18 thru 21

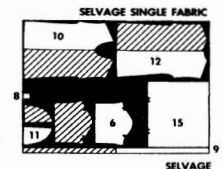
58" 60" (150cm) fabric with nap sizes petite-small



sizes medium-large



size large



5589 - PART 1

### SEWING DIRECTIONS

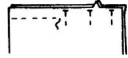
READ directions for View you are making before beginning to sew.

STUDY the drawings carefully.



SEW exactly on seam lines indicated on pattern. To make a seam:

PIN two pieces of fabric, Right Sides Together matching notches and seam lines. BASTE, if desired, by hand or machine.



FIT garment before stitching major seams.

STITCH in direction of arrows. Use 5/8" (1.5cm) seam allowance unless otherwise indicated.



PRESS seams open unless otherwise noted.

#### SEWING TERMS

GRADE: Cut seam allowances to graduated widths and interfacing close to stitching.



UNDERSTITCHING: Row of machine stitching thru facing and seam allowances close to seam line. Prevents facing from rolling to outside.



INVISIBLE STITCH: Used for hemming. Turn hem back. Pick up a thread of garment; then pick up a thread of hem diagonally above.

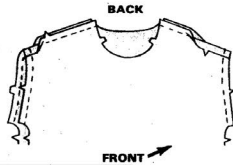


### TOP

VIEW A-B-C

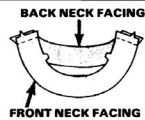
#### 1. SHOULDER SEAMS

Stitch front to back at shoulders.  
Stitch armhole 1/2" (1.3cm) from cut edge.

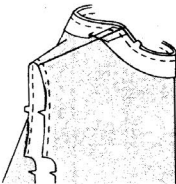


#### 2. NECK FACING

Stitch front neck facing to back neck facing.

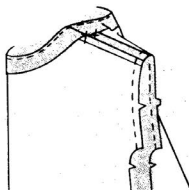


Pin facing to neck edge, RIGHT SIDES TOGETHER, matching notches and shoulder seams. Stitch.



GRADE seam allowances: see SEWING TERMS. Clip curve.

Press facing and seam allowances away from neck. UNDERSTITCH facing: see SEWING TERMS.



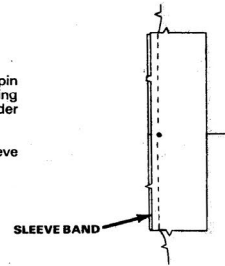
Turn facing to INSIDE. Press. Catch-stitch to shoulder seams.

### 3. SLEEVE BANDS AND UNDERARM SEAMS

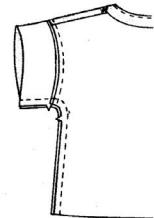
VIEW A

With RIGHT SIDES TOGETHER, pin sleeve band to armhole, matching notches and LARGE circle to shoulder seam. Stitch.

Press seam allowances toward sleeve band.



Stitch underarm seams of TOP and sleeve band, matching armhole seams.



To reinforce underarm curves, stitch again over first stitching. Clip underarm curves.



Press sleeve band to INSIDE on fold line. Turn under and hem edge over seam.

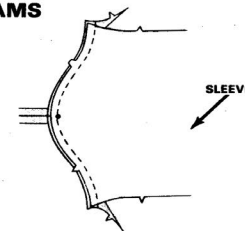


### 4. SLEEVES AND UNDERARM SEAMS

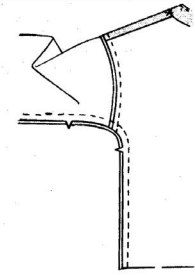
VIEW B-C

With RIGHT SIDES TOGETHER, pin sleeve to armhole, matching notches and LARGE circle to shoulder seam. Stitch.

Press seam allowances toward sleeve.



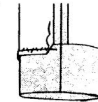
Stitch underarm seams of TOP and sleeve, matching armhole seams.



To reinforce underarm curves, stitch again over first stitching. Clip underarm curves.



Turn up sleeve hem. Press. Sew hem in place.



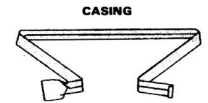
For cuff, turn up lower edge of sleeve and press.



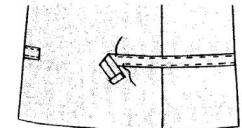
### 5. CASING AND DRAWSTRING

CASING VIEW A

Press under 3/8" (1cm) on long edges and ends of casing.



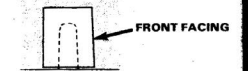
With RIGHT SIDES UP, pin casing to TOP between casing lines. Stitch casing in place close to long edges.



### FRONT FACING AND CASING

VIEW B-C

Pin facing to lower edge of front, RIGHT SIDES TOGETHER, matching stitching lines. Stitch along stitching lines indicated on pattern.



Cut along solid line to point. Clip curves.



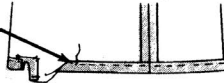
CONTINUED ON PART 2

Press facing to **INSIDE**. Baste lower edges.

Tack upper corners of facing in place.



Press lower edge of **TOP** to **INSIDE** on casing line. Stitch in place 3/4" (2cm) from fold edge.



**DRAWSTRING**

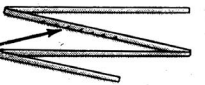
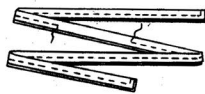
Stitch piecing seam of drawstring if necessary.

Fold drawstring on fold line, **RIGHT SIDES TOGETHER**. Stitch seam edges, taking a 3/8" (1cm) seam and leaving an opening for turning.

Cut corners diagonally. **GRADE** seam allowances.

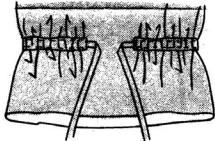
Turn drawstring **RIGHT SIDE OUT**. Slipstitch opening edges together. Press.

**DRAWSTRING**

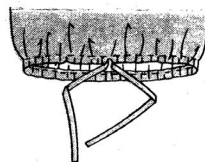


Insert drawstring thru openings in casing.

**VIEW A**



**VIEW B OR C**

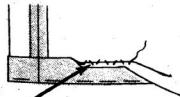


**6. HEM** **VIEW A**

Mark hemline. Turn up hem along marking. Hand-baste. Trim hem to an even width.

If desired, finish edge with stretch lace.

Sew hem in place.



**VIEW D-E**

**1. POCKETS**

Reinforce side edges of front by stitching on seam line, each side of **LARGE** circles as illustrated. Clip to circles as indicated on pattern.

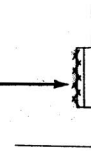


**FRONT**

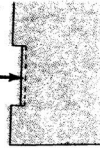


**CLIP**

Press side edges of front to **INSIDE** on seam line. Catch-stch to front as illustrated.

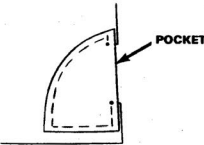


Top-stitch front 1/4" (6mm) from edge between clips.



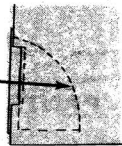
Pin **RIGHT SIDE** of pocket to **WRONG SIDE** of front, matching circles and having raw edges even at side.

Hand-baste raw edges of pocket to front.



**POCKET**

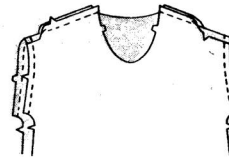
Top-stitch front along lines indicated on pattern, stitching thru pockets.



**2. SHOULDER SEAMS**

Stitch front to back at shoulders.

Stitch armhole 1/2" (1.3cm) from cut edge.



**3. NECK FACING** **VIEW D**

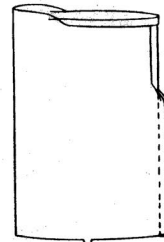
Same as described for TOP A, B OR C - 2. NECK FACING.

**4. COLLAR** **VIEW E**

Stitch center back seam in collar.

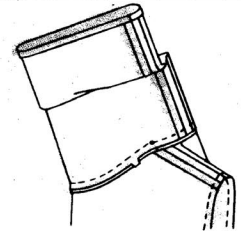
Press under 5/8" (1.5cm) on **UN-NOTCHED** edge of collar.

**COLLAR**



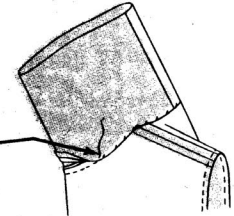
Pin collar to neck edge, **RIGHT SIDES TOGETHER**, matching notches and **LARGE** circles to shoulder seams. Stitch.

**GRADE** seam allowances. Press seam toward collar.



Fold collar on fold line, **WRONG SIDES TOGETHER**. Press.

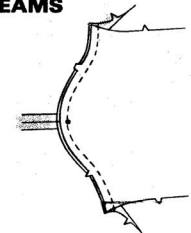
Hem pressed under edge over seam.



**5. SLEEVES AND UNDERARM SEAMS**

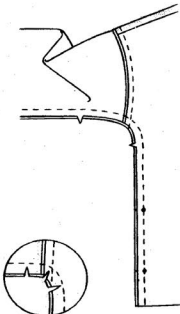
With **RIGHT SIDES TOGETHER**, pin sleeve to armhole, matching notches and **LARGE** circle to shoulder seam. Stitch.

Press seam allowances toward sleeve.



**SLEEVE**

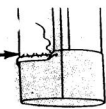
Stitch underarm seams of TOP and sleeve, matching armhole seams, notches and circles, being careful not to catch in pocket opening between circles.



To reinforce underarm curves, stitch again over first stitching. Clip underarm curves.

Turn up sleeve hem. Press.

Sew hem in place.



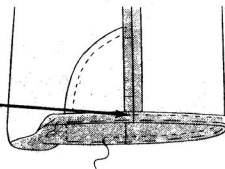
For cuff, turn up lower edge of sleeve and press.



5589 - PART 3

**6. HEM** **VIEW D**

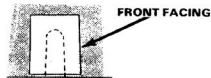
Turn up lower edge on hemline. Press. Hand-baste in place.  
Top-stitch 3/4" (2cm) from lower edge.



**7. FACING, CASING AND DRAWSTRING** **VIEW E**

**FRONT FACING**

Pin front facing to lower edge of front, RIGHT SIDES TOGETHER, matching stitching lines. Stitch along stitching lines indicated on pattern.



Cut along solid line to point. Clip curves.



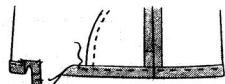
Press facing to INSIDE. Baste lower edges.



Tack upper corners of facing in place.

**CASING**

Press lower edge of TOP to INSIDE on casing line. Stitch in place 3/4" (2cm) from fold edge.



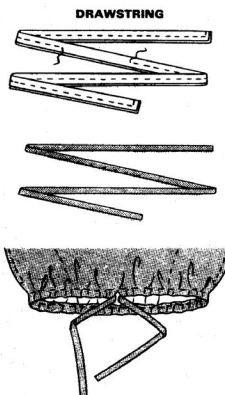
**DRAWSTRING**

Stitch piecing seam of drawstring if necessary.

Fold drawstring on fold line, RIGHT SIDES TOGETHER. Stitch seam edges, taking a 3/8" (1cm) seam and leaving an opening for turning.

Cut corners diagonally. GRADE seam allowances.

Turn drawstring RIGHT SIDE OUT. Slipstitch opening edges together. Press.

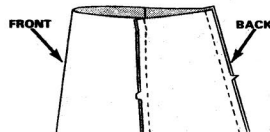


Insert drawstring thru openings in casing.

**SKIRT** **VIEW A**

**1. SEAMS**

Stitch center back seam in back.  
Stitch back to front at sides.



**2. CASING AND ELASTIC**

Press upper edge to INSIDE on casing line. Stitch close to fold edge.

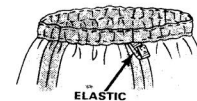
Stitch casing to skirt 3/4" (2cm) from fold edge, leaving an opening to insert elastic.



Cut elastic a comfortable waist measurement, plus 1/2" (1.3cm).

Insert elastic thru casing. Lap ends 1/2" (1.3cm) and sew together.

Stitch opening in casing.



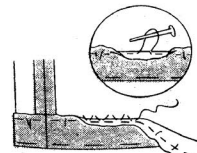
**3. HEM**

Mark hemline. Turn up hem along marking. Hand-baste. Trim hem to an even width.

Machine-baste 1/4" (6mm) from raw edge. Pull up bobbin thread to ease in fullness. Press.

If desired, finish raw edge with stretch lace.

Sew hem in place.



**PANTS** **VIEW B** **VIEW E** **SHORTS** **VIEW C**

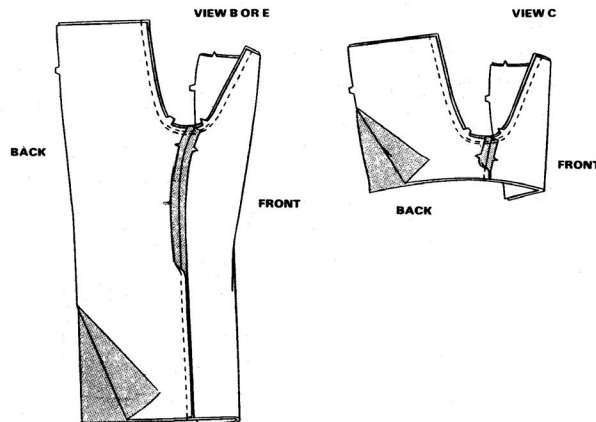
**1. FRONT AND BACK**

**INSIDE LEG AND CENTER SEAMS**

Stitch front to back at INSIDE leg edges.

Stitch center seam, matching inside leg seams.

To reinforce curve, stitch again just inside previous stitching between notches. Cut seam allowances to 3/8" (1cm) between notches.

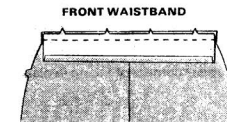


**FRONT WAISTBAND**

Press under 5/8" (1.5cm) on long UN-NOTCHED edge of front waistband.

Pin waistband to front, RIGHT SIDES TOGETHER, matching notches. Stitch, easing in front to fit between notches.

GRADE seam allowances: see SEWING TERMS. Press seam toward waistband.



**BACK CASING AND ELASTIC**

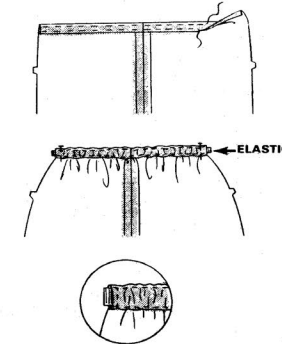
Press upper edge of back to INSIDE on casing line. Stitch close to fold edge.

Stitch casing to back 3/4" (2cm) from fold edge.

Cut elastic using BACK ELASTIC pattern piece.

Insert elastic thru casing. Pin at side edges.

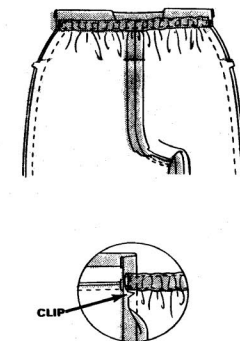
Stitch across ends of casing, catching in elastic.



**SIDE SEAMS**

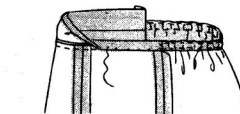
Stitch back to front at sides, having upper edge of back casing at fold line on front waistband.

Clip seam allowance on back just below casing. Press seam allowances toward front above clip and open below clip.



Turn front waistband to INSIDE on fold line.

Hem side and lower edges of front waistband over seams. Press.



**2. HEMS**

Same as described for TOP A, B OR C - 6. HEM - VIEW A.

To form creases, fold side seams to meet inside leg seams and press.



# Congrats!

You've completed your sewing adventure

---

**SHARE  
YOUR** LOOK



Post your pattern and tag us  
[@simplicity\\_creative\\_group](#) and [#simplicitypatterns](#)  
for a chance to be featured on our social media.

Look for more PDF patterns at [simplicity.com](https://www.simplicity.com)

Have a question or need help with your sewing project call us at  
1-800-782-0323

**McCall's**  
by **design**<sub>group</sub>

McCall's ©2024 a division of IG Design Group Americas Inc. • Atlanta, GA 30342 USA [www.thedesigngroup.com](http://www.thedesigngroup.com) • All Rights Reserved. [www.mccall.com](http://www.mccall.com) • Made in the U.S.A. Fabriqué aux États-Unis.

To be used for individual private home use only and not for commercial or manufacturing purposes. • A usage privé seulement et non à des fins commerciales ou de production en série. • Para uso privado solamente, no se puede utilizar con propósitos de comercialización o de producción en serie.