

McCall's

M8492



VINTAGE
70's

Designed and
printed in USA

Easy

MISSES' DRESS OR TOP

Suggested Fabrics: Challis, Cotton Blends, Eyelet, Gingham, Lightweight Cotton, Lightweight Seersucker. **View B Dress** - suitable for lengthwise stripes.

Notions: A,B,C,D: Single or foldover stretch lace (optional). **Also for B:** Purchased belt.

Sizes	6	8	10	12	14	16	18	20	22	24
European	32	34	36	38	40	42	44	46	48	50

BODY MEASUREMENTS: Select pattern size based on body measurements

Bust	30½	31½	32½	34	36	38	40	42	44	46	Ins.
Waist	23	24	25	26½	28	30	32	34	37	39	"
Hip-9" below waist	32½	33½	34½	36	38	40	42	44	46	48	"
Back-neck to waist	15½	15¾	16	16¼	16½	16¾	17	17¼	17½	17¾	"

View A Dress	45**	57%	6	6	6½	6¼	6½	6½	6½	6½	Yds.
60**	3%	3%	3%	3%	3%	3%	3%	4%	4¼	4½	"

View B Dress	45**	3	3	3½	3½	3¾	3¾	3¾	3¾	4	Yds.
60**	2%	2%	2%	2¼	2¼	2½	2½	2½	2½	2¾	"

View C Dress	45**	2¼	2¼	2¼	2¼	3	3½	3½	3½	3½	Yds.
60**	2%	2%	2%	2%	2%	2%	2%	2%	2%	2½	"

View D Top	45**	1%	1%	1¼	1¼	1¼	2	2½	2½	2½	Yds.
60**	1¼	1¼	1¼	1¼	1¾	1¾	1¾	1¾	1¾	1¾	"

FINISHED GARMENT MEASUREMENTS (Includes Design and Wearing Ease)

View A,B,C,D Bust	35½	36½	37½	39	41	43	45	47	49	51	Ins.
-------------------	-----	-----	-----	----	----	----	----	----	----	----	------

Width, lower edge

View B Dress	79½	80½	81½	83	85	87	89	91	93	95	Ins.
--------------	-----	-----	-----	----	----	----	----	----	----	----	------

View C Dress	71½	72½	73½	75	77	79	81	83	85	87	"
--------------	-----	-----	-----	----	----	----	----	----	----	----	---

View D Top	49½	50½	51½	53	55	57	59	61	63	65	"
------------	-----	-----	-----	----	----	----	----	----	----	----	---

Finished back length from base of neck

View A Dress	57	57¼	57½	57¾	58	58¼	58½	58¾	59	59¼	Ins.
--------------	----	-----	-----	-----	----	-----	-----	-----	----	-----	------

View B Dress	40½	40¾	41	41¼	41½	41¾	42	42¼	42½	42¾	"
--------------	-----	-----	----	-----	-----	-----	----	-----	-----	-----	---

View C Dress	34½	34¾	35	35¼	35½	35¾	36	36¼	36½	36¾	"
--------------	-----	-----	----	-----	-----	-----	----	-----	-----	-----	---

View D Top	19	19¼	19½	19¾	20	20¼	20½	20¾	21	21¼	"
------------	----	-----	-----	-----	----	-----	-----	-----	----	-----	---

*with nap **without nap

Facile

ROBE OU HAUT POUR JEUNES FEMMES

Tissus Conseillés: Challis, Cottonnades, Broderie anglaise, Vichy, Coton léger, Seersucker léger.

Modèle B Robe - convient au tissu à rayures dans le sens de la longueur.

Merçerie: A,B,C,D: Dentelle extensible simple ou à replier (facultatif). **Aussi pour B:** Ceinture achetée.

Tailles	6	8	10	12	14	16	18	20	22	24
Françaises	34	36	38	40	42	44	46	48	50	52
Européen	32	34	36	38	40	42	44	46	48	50

MESURES DU CORPS: Choisissez la taille du patron basée sur les mesures du corps

Poitrine	78	80	83	87	92	97	102	107	112	117	cm
----------	----	----	----	----	----	----	-----	-----	-----	-----	----

Taille	58	61	64	67	71	76	81	87	94	99	"
--------	----	----	----	----	----	----	----	----	----	----	---

Hanches (23cm au-dessous de la taille)

	83	85	88	92	97	102	107	112	117	122	cm
--	----	----	----	----	----	-----	-----	-----	-----	-----	----

Dos du cou à la taille	39.5	40	40.5	41.5	42	42.5	43	44	44.5	45	"
------------------------	------	----	------	------	----	------	----	----	------	----	---

Modèle A Robe	115cm*	5.4	5.4	5.5	5.6	5.7	5.8	5.9	5.9	6.1	6.1 m
150cm*	3.3	3.3	3.3	3.3	3.3	3.4	3.5	3.8	3.9	4.1	"

Modèle B Robe	115cm*	2.7	2.7	2.7	2.9	3.3	3.4	3.4	3.4	3.5	3.7 m
150cm*	2.4	2.4	2.4	2.4	2.5	2.5	2.5	2.5	2.5	2.5	"

Modèle C Robe	115cm*	2.5	2.5	2.5	2.5	2.7	3.1	3.1	3.1	3.2	3.2 m
150cm*	2.1	2.2	2.2	2.2	2.2	2.2	2.2	2.2	2.2	2.2	"

Modèle D Robe	115cm*	1.5	1.5	1.5	1.6	1.6	1.8	1.8	1.9	1.9	1.9 m
150cm*	1.1	1.1	1.1	1.1	1.3	1.5	1.5	1.5	1.6	1.6	"

MESURES DES VÊTEMENTS FINI (Motif et aisance de port compris)

Modèle A,B,C,D Poitrine	90	93	95	99	104	109	114	119	124	130	cm
-------------------------	----	----	----	----	-----	-----	-----	-----	-----	-----	----

Largeur à l'ourlet

Modèle B Robe	202	204	207	211	216	221	226	231	236	241	cm
---------------	-----	-----	-----	-----	-----	-----	-----	-----	-----	-----	----

Modèle C Robe	182	184	187	191	196	201	206	211	216	221	"
---------------	-----	-----	-----	-----	-----	-----	-----	-----	-----	-----	---

Modèle D Haut	126	128	131	135	140	145	150	155	160	165	"
---------------	-----	-----	-----	-----	-----	-----	-----	-----	-----	-----	---

Longueur finie - dos, votre nuque à l'ourlet

Modèle A Robe	145	145	146	147	147	148	149	149	150	150	cm
---------------	-----	-----	-----	-----	-----	-----	-----	-----	-----	-----	----

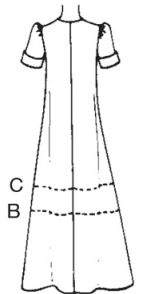
Modèle B Robe	103	104	104	105	105	106	107	107	108	109	"
---------------	-----	-----	-----	-----	-----	-----	-----	-----	-----	-----	---

Modèle C Robe	88	88	89	90	90	91	91	92	93	93	"
---------------	----	----	----	----	----	----	----	----	----	----	---

Modèle D Haut	48	49	50	50	51	51	52	53	53	54	"
---------------	----	----	----	----	----	----	----	----	----	----	---

*avec sens **sans sens

A,B,C

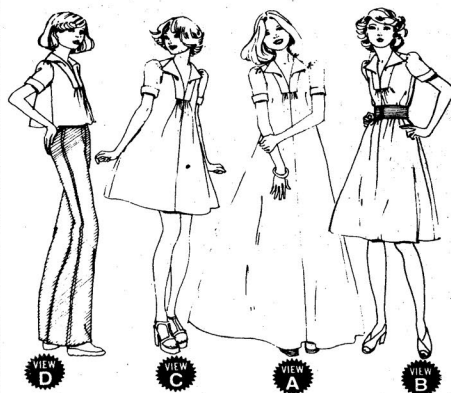
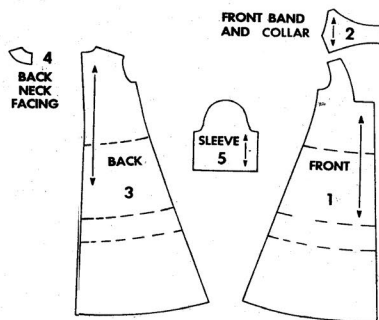


A



D

4574

CAREFREE PATTERNS
FROM
McCALL'SSELECT PATTERN PIECES
FOR VIEW YOU HAVE CHOSEN5 PATTERN PIECES
DRESS A-B-C OR TOP D

VIEW A, B, C OR D — USE PIECES 1 thru 5

HOW TO USE A McCALL'S CAREFREE PATTERN

STUDY THE PATTERN

Select pieces for VIEW you have chosen.

Check identification markings - Number, Size, Name and View - on each piece.

Understand the pattern markings.

Grainline: Place line on straight grain of fabric, an even distance from selvage.

Place on fold: Fold Line: Place on fold of fabric.

Cutting Line: For cutting.

Seam Line: For sewing.

Seam Allowance: Distance between cutting and seam lines is usually 5/8" (1.5cm).

Notches and Circles: For matching pattern pieces

ADJUST IF NECESSARY

A pattern is made to fit specific body measurements, with extra ease for comfort and style.

Compare your body measurements to those listed on pattern envelope. Adjust pieces before placing them on fabric. Back waist and finished garment lengths can be adjusted using McCALL'S Easy-Rule Guide.*

To Shorten: Crease pattern on Easy-Rule Guide. Fold pleat necessary amount. Tape in place.

To Lengthen: Cut pattern on dotted lines of Easy-Rule Guide. Spread necessary amount. Tape over paper.

NOTE THE MEASUREMENTS

Abbreviations "mm" and "cm" are metric equivalent for inches. They are provided for the convenience of those using the metric system of measurement.

1/8" (3mm) 1/2" (1.3cm) 1" (2.5cm)
1/4" (6mm) 5/8" (1.5cm) 1 1/4" (3.1cm)
3/8" (1cm) 3/4" (2cm) 2" (5cm)

LAYOUT FOR CUTTING

Shrink fabric not labeled pre-shrunk. Press.

Circle layout for View, Size, Fabric Width.

- Use With Nap layout for fabrics with one-way designs, nap, pile or surface shading.
- Use Without Nap layout for other fabrics.

Arrange fabric for cutting as shown on layout:

- Double Thickness - fold fabric with Right Sides Together.
- Single Thickness - place fabric Right Side Up.

Before cutting, place all pieces on fabric according to layout. Overlap margins. Pin.

CUTTING AND MARKING

Cut accurately through fabric and pattern on cutting line. Cut notches outward.

Before removing pattern, transfer markings to Wrong Side of fabric. One way which may be used quickly and safely on the widest range of fabrics is the Pin and Chalk Pencil method.*

Questions about sewing? Write Meg Carter, The McCALL Pattern Company, 230 Park Avenue, New York, New York 10017.

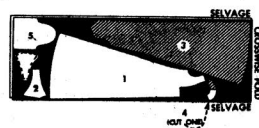
*See McCALL'S Sewing Book for other adjustments and marking information.

CUTTING LAYOUTS

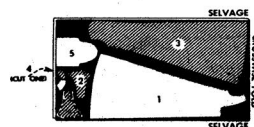
- Black area denotes fabric. Pattern pieces to be placed with printed side down.
Pattern pieces to be placed with printed side up. Pattern pieces to be cut a second time.
- Metric measurements are given in parenthesis.

VIEW A — DRESS

35" 36" (90cm) FABRIC WITHOUT NAP
ALL SIZES

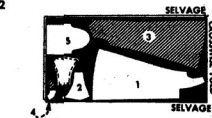


44" 45" (115cm) FABRIC WITHOUT NAP
ALL SIZES

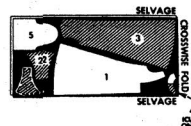


VIEW B — DRESS

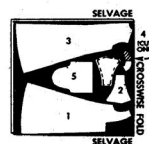
35" 36" (90cm) FABRIC WITHOUT NAP
SIZES 8-10-12



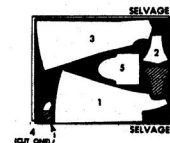
SIZES 14-16



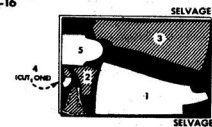
44" 45" (115cm) FABRIC WITHOUT NAP
SIZE 8



SIZES 10-12



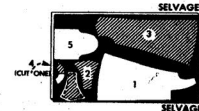
SIZES 14-16



Disregard any perforations on pattern pieces.

VIEW C — DRESS

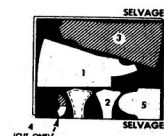
35" 36" (90cm) FABRIC WITHOUT NAP
ALL SIZES



44" 45" (115cm) FABRIC WITHOUT NAP
SIZES 8-10-12



SIZES 14-16

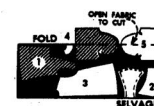


VIEW D — TOP

35" 36" (90cm) FABRIC WITHOUT NAP
ALL SIZES



44" 45" (115cm) FABRIC WITHOUT NAP
ALL SIZES



SEWING DIRECTIONS

READ directions for View you are making before beginning to sew. STUDY the drawings carefully.



right side of fabric



wrong side of fabric



interfacing



lining

SEW exactly on seam lines indicated on pattern. To make a seam:

PIN two pieces of fabric, Right Sides Together matching notches and seam lines. BASTE, if desired, by hand or machine.

FIT garment before stitching major seams.

STITCH in direction of arrows. Use 5/8" (1.5cm) seam allowance unless otherwise indicated.

PRESS seams open unless otherwise noted.

FINISH raw edges of seams, facings and hems to prevent raveling:



stitched



turned and stitched



zigzag



pink

SEWING TERMS

GRADE: Cut seam allowances to graduated widths and interfacing close to stitching.

UNDERSTITCHING: Row of machine stitching thru facing and seam allowances close to seam line. Prevents facing from rolling to outside.

INVISIBLE STITCH: Used for hemming. Turn hem back. Pick up a thread of garment; then pick up a thread of hem diagonally above.



DRESS

VIEW A

VIEW B

VIEW C

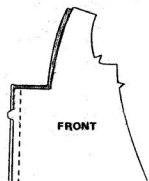
TOP

VIEW D

1. FRONT

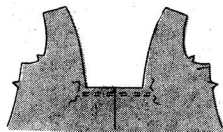
CENTER FRONT SEAM

Stitch center front seam.



GATHERS

To gather upper edge of front, machine-baste along lines indicated on pattern.

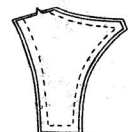


FRONT BAND AND COLLAR

Stitch facing to each front band and collar, RIGHT SIDES TOGETHER, leaving notched shoulder edges free.

GRADE seam allowances: see SEWING TERMS. Cut stitched corners diagonally.

FRONT BAND AND COLLAR



1. CONTINUED

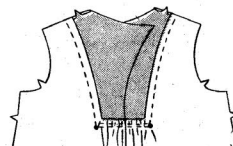
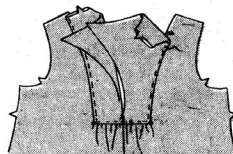
Turn RIGHT SIDE OUT. Press.

Slipstitch front edges together from lower edge to LARGE circle.



With RIGHT SIDES UP, lap and pin front band and collar to seam lines on front, matching SMALL circles and slipstitched front edges of band to center front seam.

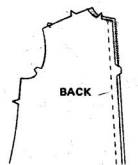
Draw up gathers to fit. Baste, adjusting gathers evenly. Stitch close to edges of front band and collar.



2. BACK

CENTER BACK SEAM

Stitch center back seam.

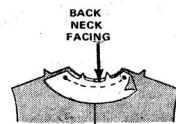


BACK NECK FACING

Finish lower UN-NOTCHED edge of back neck facing: see SEWING DIRECTIONS.

Pin facing to neck edge of back, RIGHT SIDES TOGETHER, matching notches and circles. Stitch between circles.

GRADE seam allowances. Clip curves.

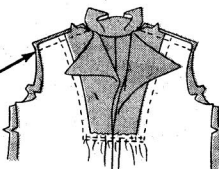


3. SHOULDER SEAMS

Open out back neck facings.

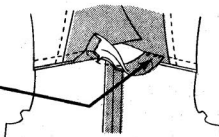
Pin front to back at shoulders, matching notches and circles. Stitch from armhole edges to circles.

Press seam allowances toward back.

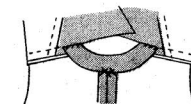


Turn facing to INSIDE.

Turn under free shoulder edges of back neck facing and hem over shoulder seam stitching.

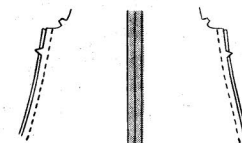


Catch-stitch facing to center back seam.



4. SIDE SEAMS

Stitch back to front at sides.



5. SLEEVES

SLEEVE PREPARATION

Gather sleeve cap by machine-basting along lines indicated on pattern.



Stitch sleeve seam.



Finish lower raw edge.

Turn up lower edge on hemline. Press.

Sew hem in place with INVISIBLE STITCH: see SEWING TERMS.



For cuff, turn up lower edge of sleeve on line indicated.



SETTING SLEEVE INTO ARMHOLE

Pin sleeve into armhole, RIGHT SIDES TOGETHER, matching underarm seams, small circles and LARGE circle to shoulder seam.

Draw up gathers to fit. Baste, adjusting gathers evenly. Stitch. Turn seam allowances toward sleeve.



6. HEM

Try on. Mark hemline.

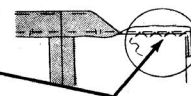
Turn up hem along marking. Hand-baste along fold. Trim hem to an even width.

Machine-baste 1/4" (6mm) from raw edge. Pull up bobbin thread to ease in fullness. Press.

Finish raw edge: see SEWING DIRECTIONS.

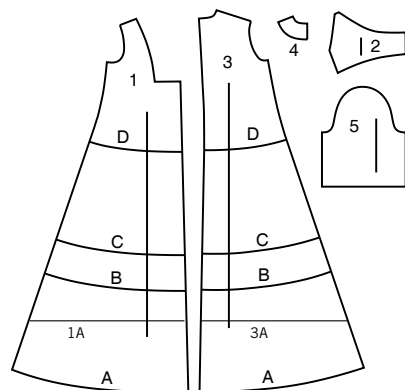
Sew hem in place with INVISIBLE STITCH: see SEWING TERMS.

OR, finish with single or foldover stretch lace.



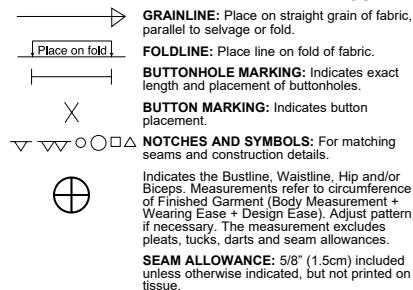
SUPPLEMENTAL CUTTING LAYOUTS

5 PATTERN PIECES

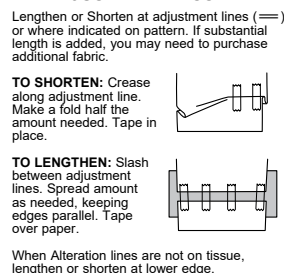


- 1 (1A) FRONT
2 FRONT BAND AND COLLAR
3 (3A) BACK
4 BACK NECK FACING
5 SLEEVE

PATTERN MARKINGS



ADJUST IF NECESSARY



SHRINK FABRIC if not labeled pre-shrunk. Press.

CIRCLE LAYOUT for View, Size, Fabric Width.

Use **WITH NAP** layout for fabrics with one-way designs, nap, pile or surface shading. Because most knits have surface shading, a with nap layout is used.

For **DOUBLE THICKNESS (WITH FOLD)** - fold fabric with right sides together.

*** DOUBLE THICKNESS (WITHOUT FOLD)** - For fabrics with nap, fold fabric crosswise, right sides together. Mark as shown. Cut along crosswise fold of fabric (A). Turn upper layer 180° so arrows go in same direction and place over lower layer, right sides together (B).

For **SINGLE THICKNESS** - place fabric right side up. (For Fur Pile fabrics, place pile side down.)

CUTTING AND MARKING

★ Cut other pieces first, allowing enough fabric to cut this piece. Open fabric. For "Cut 1" pieces, cut piece once on single layer of fabric with piece face up on right side of fabric.

Pattern may have cutting lines for several sizes. Select the proper cutting line or pattern pieces for your size.

Before **CUTTING** place all pieces on fabric according to layout. Pin. (**Layouts show approximate position of pattern pieces; position may vary according to your pattern size.**) Cut **ACCURATELY**, cutting notches outward.

Before removing pattern, **TRANSFER MARKINGS** and lines of construction to Wrong Side of fabric, using the Pin and Chalk Pencil method or Tracing Paper and Dressmaker Wheel. Markings needed on right side of fabric should be thread traced.

NOTE: Broken-line boxes (a! b! c!) in layouts represent pieces cut by measurements provided.

CUTTING LAYOUTS

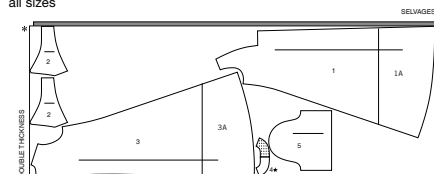
RIGHT SIDE OF PATTERN	WRONG SIDE OF PATTERN	RIGHT SIDE OF FABRIC	WRONG SIDE OF FABRIC

DRESS A

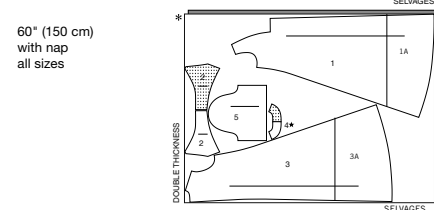
use pieces: 1(1A) 2 3(3A) 4 5

NOTE: Before cutting fabric, join pieces in parenthesis to corresponding pieces following instructions on tissue pattern.

45" (115 cm) with nap
all sizes



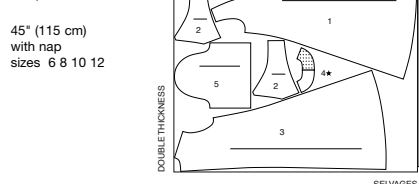
60" (150 cm)
with nap
all sizes



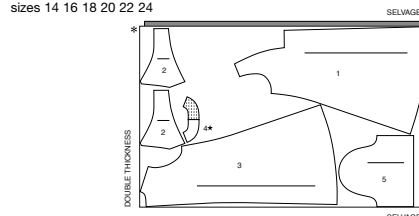
DRESS B

use pieces: 1 2 3 4 5

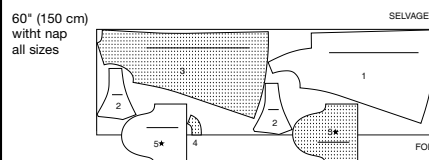
45" (115 cm)
with nap
sizes 6 8 10 12



45" (115 cm) with nap
sizes 14 16 18 20 22 24



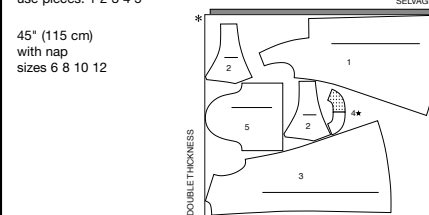
60" (150 cm)
with nap
all sizes



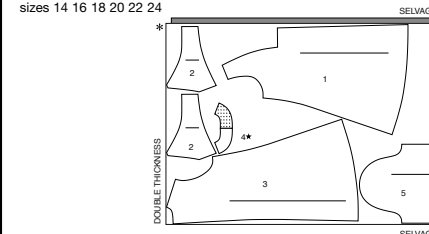
DRESS C

use pieces: 1 2 3 4 5

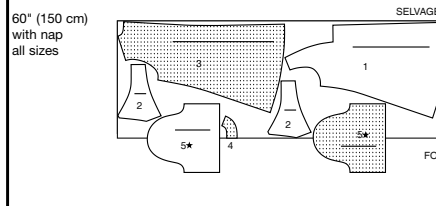
45" (115 cm)
with nap
sizes 6 8 10 12



45" (115 cm)
with nap
sizes 14 16 18 20 22 24



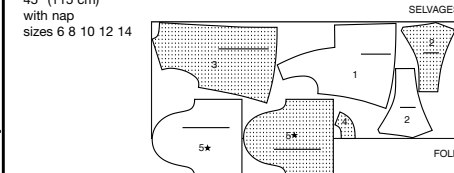
60" (150 cm)
with nap
all sizes



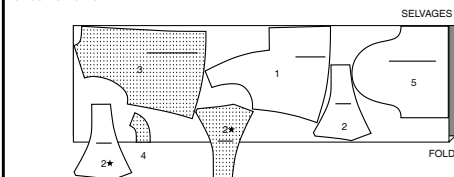
TOP D

use pieces: 1 2 3 4 5

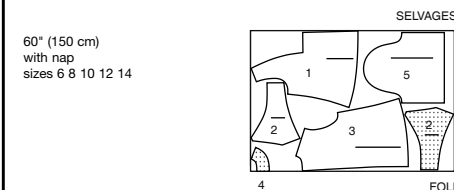
45" (115 cm)
with nap
sizes 6 8 10 12 14



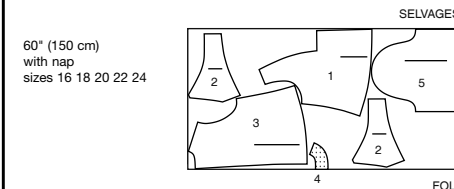
45" (115 cm)
with nap
sizes 16 18 20 22 24



60" (150 cm)
with nap
sizes 6 8 10 12 14



60" (150 cm)
with nap
sizes 16 18 20 22 24





Congrats!

You've completed your sewing adventure

SHARE YOUR LOOK



Post your pattern and tag us
[@simplicity_creative_group](#) and [#simplicitypatterns](#)
for a chance to be featured on our social media.

Look for more PDF patterns at [simplicity.com](https://www.simplicity.com)

Have a question or need help with your sewing project call us at
1-800-782-0323

McCall's
by **design**_{group}

McCall's ©2024 a division of IG Design Group Americas Inc. • Atlanta, GA 30342 USA www.thedesigngroup.com • All Rights Reserved. www.mccall.com • Made in the U.S.A. Fabriqué aux États-Unis.

To be used for individual private home use only and not for commercial or manufacturing purposes. • A usage privé seulement et non à des fins commerciales ou de production en série. • Para uso privado solamente, no se puede utilizar con propósitos de comercialización o de producción en serie.