

McCall's

M8489



Designed and printed in USA

Average

CHILDREN'S AND GIRLS' PINAFORE AND OVERALLS

Suggested Fabrics: Denim, Linen, Nylon, Twill. Interfacing: Lightweight Fusible.

Notions: A,B,C: Pair of 5/8" (1.5cm) heavy duty snaps.

Sizes	CHILDREN'S					GIRLS'				
	3	4	5	6	7	8	10	12	14	
BODY MEASUREMENTS: Select pattern size based on body measurements										
Chest	22	23	24	25	26	27	28½	30	32	Ins.
Waist	20½	21	21½	22	23	23½	24½	25½	26½	"
Hip	—	24	25	26	27	28	30	32	34	"
Back-neck to waist	9	9½	10	10½	11½	12	12¾	13½	14¼	"
Height	38	41	44	47	50	52	56	58½	61	"
Pinafore A	45**	1½	1½	1½	1½	1½	1½	2	2	Yds.
	60**	¾	¾	¾	1	1½	1¼	1¼	1¾	"
Interfacing A	20" - ¾ yd.									
Overalls B	45**	¾	¾	¾	1	1½	1¼	1¼	1¾	Yds.
	60**	¾	¾	¾	¾	1	1	1	1	"
Interfacing B,C	20" ½ ½ ¾ ¾ ¾ ¾ ¾ ¾ ¾ Yd.									
Overalls C	45**	1½	1½	1½	2	2	2½	2¼	2¼	Yds.
	60**	1½	1½	1½	1½	1½	1½	1¾	1¾	"

FINISHED GARMENT MEASUREMENTS (Includes Design and Wearing Ease)

A,B,C Bust	23½	24½	25½	26½	26¼	27¼	29¾	31¾	33¾	Ins.
A Waist	25	26	27	28	29½	30½	32	34	36	"
B,C Waist	23½	24½	25½	26½	27	28	29½	31½	33½	"
A Hip	27¾	28¾	29¾	30¾	34½	35½	36½	38½	40½	"
B,C Hip	25½	26½	27½	28½	31½	32½	33½	35½	37½	"
Width, lower edge Pinafore A (incl. band)	31½	32½	33½	34½	39	40	42	44	46	Ins.
Width, each leg Overalls B	17	17½	18	18½	20¾	21	21½	22	22½	Ins.
Overalls C	14	14½	15	15½	17	17¼	17¾	18¼	18¾	"
Finished back length from base of neck Pinafore A (incl. band)	20	21½	23½	25½	25¼	27	29	31	33	Ins.
Overalls B	18¼	19¼	20¼	21¼	23	24¾	25½	26¼	27	"
Overalls C	32¾	34¼	36¼	38¼	39¾	42	46	50	52	"

*with nap **without nap

Moins Facile

TABLIER ET SALOPETTES POUR ENFANTS ET FILLETTES

Tissus Conseillés: Denim, Toile de lin, Nylon, Twill. Entoilage: Thermocollant léger.

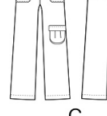
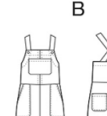
Merci: A,B,C: Paire de boutons-pressions résistant de 1.5cm.

Tailles	ENFANTS					FILLETTES				
	3	4	5	6	7	8	10	12	14	
MESURES DU CORPS: Choisissez la taille du patron basée sur les mesures du corps										
Poitrine	56	58.5	61	63.5	66	68.5	72.5	76	81.5	cm
Taille	52	53.5	54.5	56	58.5	59.5	62	65	67.5	"
Hanches	—	61	63.5	66	68.5	71	76	81.5	86.5	"
Dos du cou à la taille	23	24	25.5	26.5	29	30.5	32.5	34.5	36	"
Hauteur	96.5	104	112	120	127	132	143	149	155	"
Tablier A	115cm*	1.0	1.0	1.0	1.1	1.5	1.5	1.8	1.8	m
	150cm*	0.8	0.8	0.8	0.9	1.0	1.1	1.1	1.3	"
Entoilage A	51cm - 0.0m									
Salopette B	115cm*	0.8	0.8	0.8	0.9	1.0	1.1	1.3	1.3	m
	150cm*	0.6	0.7	0.7	0.7	0.9	0.9	0.9	0.9	"
Entoilage B,C	51cm									
Salopette C	115cm*	1.3	1.3	1.4	1.4	1.8	1.8	1.9	2.1	m
	150cm*	1.0	1.0	1.0	1.0	1.4	1.4	1.5	1.6	"

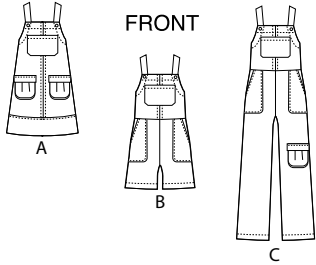
MESURES DES VÊTEMENTS FINI (Motif et aisance de port compris)

A,B,C Poitrine	60	62	65	67	67	69	76	81	86	cm
A Taille	64	66	69	71	75	77	81	86	91	"
B,C Taille	60	62	65	67	69	71	75	80	85	"
A Hanches	70	73	76	78	88	90	93	98	103	"
B,C Hanches	65	67	70	72	80	83	85	90	95	"
Largeur à l'ourlet Tablier A (y compris la bande)	80	83	85	88	99	102	107	112	117	cm
Largeur, chaque jambe Salopette B	43	44	46	47	53	53	55	56	57	cm
Salopette C	36	37	38	39	43	44	45	46	48	"
Longueur finie - dos, votre nuque à l'ourlet Tablier A (y compris la bande)	51	55	60	65	64	69	74	79	84	cm
Salopette B	46	49	51	54	58	63	65	67	69	"
Salopette C	83	87	92	97	101	107	117	127	132	"

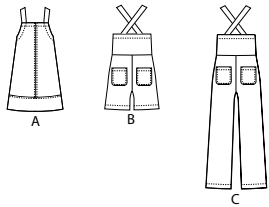
*avec sens **sans sens



C

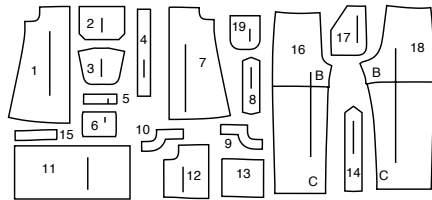


FRONT



BACK

19 PATTERN PIECES



- 1 Front-A
- 2 Upper Pocket-A,B,C
- 3 Lower Pocket-A,C
- 4 Gusset for Lower Pocket-A,C
- 5 Lower Pocket Facing-A,C
- 6 Flap-A,C
- 7 Back-A
- 8 Shoulder Strap-A
- 9 Front Facing-A,B,C
- 10 Back Facing-A
- 11 Lower Band-A
- 12 Bodice Front-B,C
- 13 Bodice Back-B,C
- 14 Shoulder Strap-B,C
- 15 Back Facing-B,C
- 16 Pants Front-B,C
- 17 Pocket-B,C
- 18 Pants Back-B,C
- 19 Back Pocket-B,C

PATTERN MARKINGS

GRAINLINE: Place on straight grain of fabric, parallel to selvage or fold.

FOLDLINE: Place line on fold of fabric.

BUTTONHOLE MARKING: Indicates exact length and placement of buttonholes.

BUTTON MARKING: Indicates button placement.

NOTCHES AND SYMBOLS: For matching seams and construction details.

Indicates the Bustline, Waistline, Hip and/or Biceps. Measurements refer to circumference of Finished Garment (Body Measurement + Wearing Ease + Design Ease). Adjust pattern if necessary. The measurement excludes pleats, tucks, darts and seam allowances.

SEAM ALLOWANCE: 5/8" (1.5cm) included unless otherwise indicated, but not printed on tissue.

ADJUST IF NECESSARY

Lengthen or Shorten at adjustment lines (==) or where indicated on pattern. If substantial length is added, you may need to purchase additional fabric.

TO SHORTEN: Crease along adjustment line. Make a fold half the amount needed. Tape in place.

TO LENGTHEN: Slash between adjustment lines. Spread amount as needed, keeping edges parallel. Tape over paper.

When Alteration lines are not on tissue, lengthen or shorten at lower edge.

CUTTING AND MARKING

SHRINK FABRIC if not labeled pre-shrunk. Press.

CIRCLE LAYOUT for View, Size, Fabric Width.

Use **WITH NAP** layout for fabrics with one-way designs, nap, pile or surface shading. Because most knits have surface shading, a with nap layout is used.

For **DOUBLE THICKNESS (WITH FOLD)** - fold fabric with right sides together.

*** DOUBLE THICKNESS (WITHOUT FOLD)** - For fabrics with nap, fold fabric crosswise, right sides together. Mark as shown. Cut along crosswise fold of fabric (A). Turn upper layer 180° so arrows go in same direction and place over lower layer, right sides together (B).

For **SINGLE THICKNESS** - place fabric right side up. (For Fur Pile fabrics, place pile side down.)

★ Cut other pieces first, allowing enough fabric to cut this piece. Open fabric. For "Cut 1" pieces, cut piece once on single layer of fabric with piece face up on right side of fabric.

Pattern may have cutting lines for several sizes. Select the proper cutting line or pattern pieces for your size.

Before **CUTTING** place all pieces on fabric according to layout. Pin. (**Layouts show approximate position of pattern pieces; position may vary according to your pattern size.**) Cut **ACCURATELY**, cutting notches outward.

Before removing pattern, **TRANSFER MARKINGS** and lines of construction to Wrong Side of fabric, using the Pin and Chalk Pencil method or Tracing Paper and Dressmaker Wheel. Markings needed on right side of fabric should be thread traced.

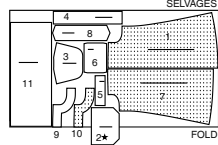
NOTE: Broken-line boxes (a! b! c!) in layouts represent pieces cut by measurements provided.

CUTTING LAYOUTS

RIGHT SIDE OF PATTERN	WRONG SIDE OF PATTERN	RIGHT SIDE OF FABRIC	WRONG SIDE OF FABRIC
-----------------------	-----------------------	----------------------	----------------------

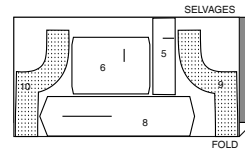
PINAFORE A
use pieces: 1 2 3 4 5 6 7 8 9 10 11

45" (115 cm)
with nap
sizes 3 4 5 6

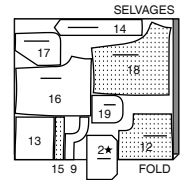


INTERFACING A
use pieces: 5 6 8 9 10

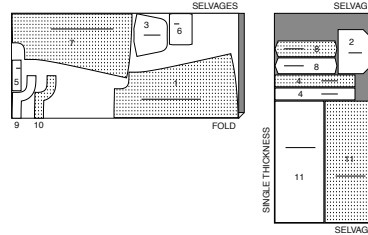
20" (51 cm)
all sizes



60" (150 cm)
with nap
sizes 7 8 10 12 14

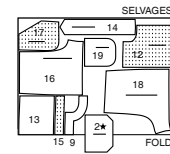


45" (115 cm)
with nap
sizes 7 8 10 12 14



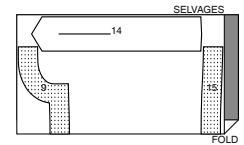
OVERALLS B
use pieces: 2 9 12 13 14 15 16 17 18 19

45" (115 cm)
with nap
sizes 3 4 5 6

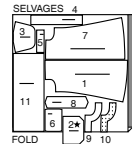


INTERFACING B
use pieces: 9 14 15

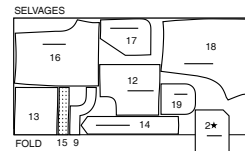
20" (51 cm)
sizes 3 4 5 6



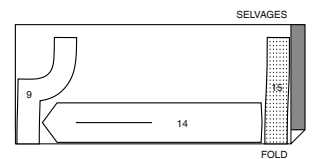
60" (150 cm)
with nap
sizes 3 4 5 6



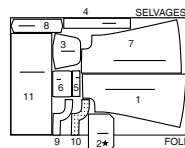
45" (115 cm)
with nap
sizes 7 8 10 12 14



20" (51 cm)
sizes 7 8 10 12 14



60" (150 cm)
with nap
sizes 7 8 10 12 14

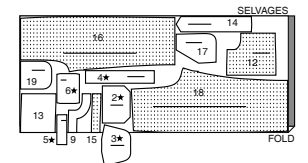


60" (150 cm)
with nap
sizes 3 4 5 6

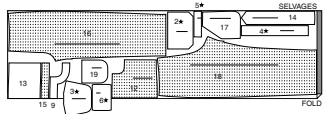


OVERALLS C
use pieces: 2 3 4 5 6 9 12 13 14 15 16 17 18 19

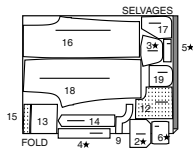
45" (115 cm)
with nap
sizes 3 4 5 6



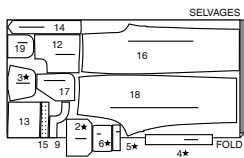
45" (115 cm)
with nap
sizes 7 8 10 12 14



60" (150 cm)
with nap
sizes 3 4 5 6



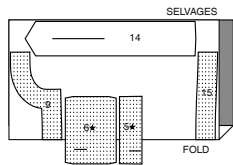
60" (150 cm)
with nap
sizes 7 8 10 12 14



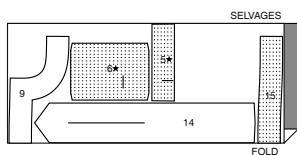
INTERFACING C

use pieces: 5 6 9 14 15

20" (51 cm)
sizes 3 4 5 6

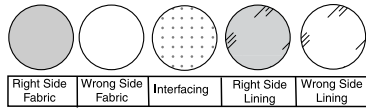


20" (51 cm)
sizes 7 8 10 12 14



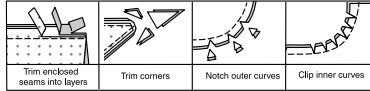
SEWING INFORMATION

FABRIC KEY



SEAM ALLOWANCES

Use 5/8" (1.5cm) seam allowances unless otherwise indicated.



PIN AND FIT

Pin or baste seams, **RIGHT SIDE TOGETHER**, matching notches. Fit garment before stitching major seams.

PRESS

Press seam allowances flat; then open unless otherwise stated. Clip where necessary so they lie flat.

GLOSSARY

Sewing methods in **BOLD TYPE** have Sewing Tutorial Video available. Scan **QR CODE** to watch videos:

EDGE STITCH - see **Machine Stitches: "how to edgestitch"** video

FINISH - see **Seams: "how to finish seam allowances"** video

NARROW HEM - see **Hems: "sewing narrow hems"** video

STAYSTITCH - see **Machine Stitches: "how to do stay-stitching"** video

TOPSTITCH - see **Machine Stitches: "how to topstitch"** video

UNDERSTITCH - see **Machine Stitches: "how to understitch"** video

PATTERN PIECES WILL BE IDENTIFIED BY NUMBERS THE FIRST TIME THEY ARE USED.

STITCH SEAMS WITH RIGHT SIDES TOGETHER UNLESS OTHERWISE STATED.

SEWING TUTORIALS



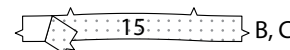
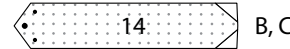
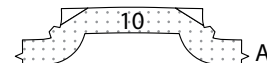
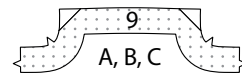
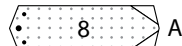
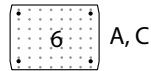
Build your skills viewing short, easy-to-follow videos at simplicity.com/sewingtutorials

PINAFORE A, OVERALLS B,C

NOTE: The first view mentioned will be shown, unless otherwise indicated.

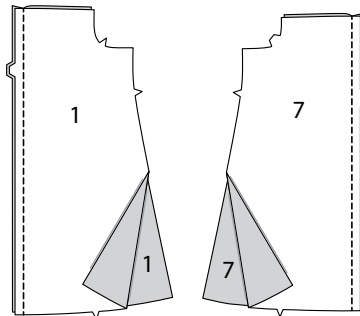
INTERFACING

1. Trim corners from **INTERFACING**, as shown. Fuse **INTERFACING** to wrong side of each matching **FABRIC** section, following manufacturer's instructions.

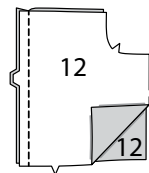


FRONT AND BACK

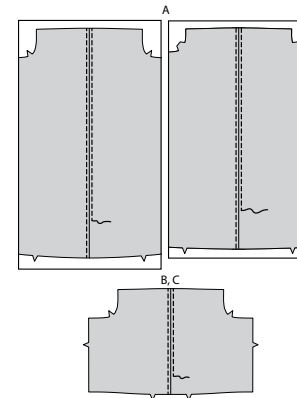
2. **View A:** Stitch **FRONT** (1) sections together at center front. Stitch **BACK** (7) sections together at center back.



3. **Views B, C:** Stitch **BODICE FRONT** (12) sections together at center front.

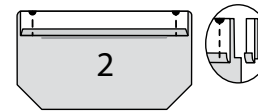


4. **Views A, B, C:** **TOPSTITCH** both sides of center seam.

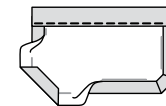


IEWS A, B, C: Upper Pockets

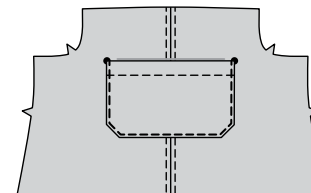
5. Turn in 1/4" (6mm) on upper edge of **UPPER POCKET** (2). Press. Turn upper edge to outside along foldline, forming a facing. Stitch along seamline on raw edges. Trim seam allowances in the facing area to 1/4" (6mm).



6. Turn corners right side out, turning facing to the wrong side. Press, pressing under raw edges along stitching, folding in corners. Press. Stitch facing close to inner edge.

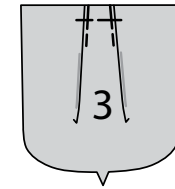


7. Pin upper pocket to front (or bodice front for **Views B, C**) matching large dots. **EDGE STITCH** sides and lower edges.

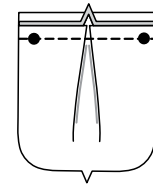


Lower Pockets and Flaps Views A, C

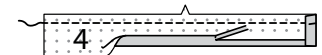
8. To make pleat on **LOWER POCKET** (3), on **OUTSIDE**, fold on solid line. Bring fold to broken line, baste. Baste upper edge.



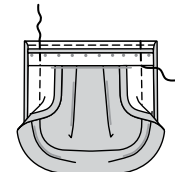
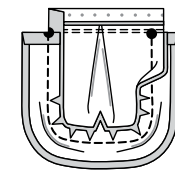
9. **FINISH** unnotched edge of **LOWER POCKET FACING** (5). Pin facing to upper edge of lower pocket matching notches and large dots. Stitch. Press seam toward facing. **UNDERSTITCH** facing.



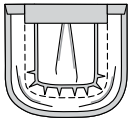
10. **STAYSTITCH** long notched edge of **GUSSET FOR LOWER POCKET** (4). Turn under 5/8" (1.5cm) on unnotched edge of gusset. Press. Trim pressed seam allowance to 3/8" (1cm). Turn in 5/8" (1.5cm) on ends of gusset.



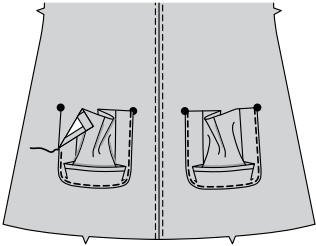
11. Open out lower pocket facing. Pin gusset to lower pocket matching notches and large dots, clipping gusset to staystitching where needed. Stitch sides and lower edges between large dots. Turn lower pocket facing to **OUTSIDE**, over gusset. Stitch sides. Trim.



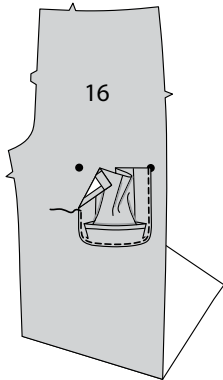
12. Turn corners RIGHT side out and facing to inside, turning gusset out. Press.



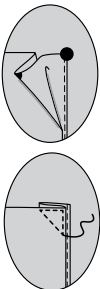
13. **VIEW A:** Pin pressed edge of gusset to front along placement lines, matching large dots. Stitch close to pressed edge of gusset.



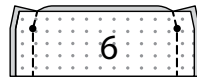
14. **VIEW C:** Pin pressed edge of gusset to (LEFT) PANTS FRONT (16) along placement line, matching large dots. Stitch close to pressed edge of gusset.



15. To pleat gusset, on OUTSIDE, bring large dots together, as shown. Press. Pin to hold in place. Stitch a triangle at upper edge of pockets through all layers.



16. Fold FLAP (6) along foldline, RIGHT sides together. Stitch ends. Trim.



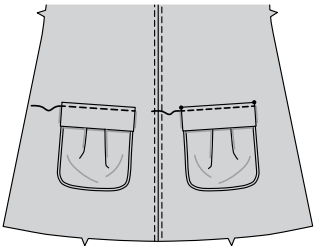
17. Turn RIGHT side out. Press. Baste raw edges together.



18. Pin flap(s) to front (LEFT front for View C), placing seamline along flap placement line with seam allowance below line, matching small dots. Stitch between small dots. Trim flap seam allowance to a scant 1/4"(6mm), being careful not to cut front.

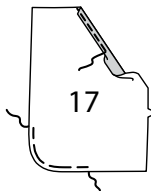


19. Turn flap down, press. TOPSTITCH upper edge of flap, encasing trimmed edge.

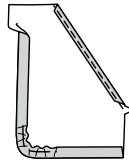


VIEWS B, C: Side and Back Pockets

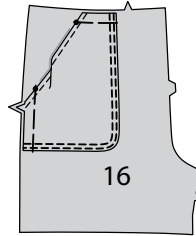
20. Make a 5/8"(1.5cm) **NARROW HEM** on slanted edge of POCKET (17). Press. To ease curved edge of pocket, machine baste 1/4"(6mm) from raw edge.



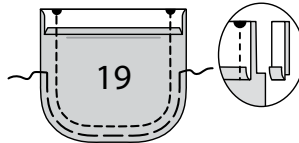
21. Turn in 5/8"(1.5cm) seam allowance on front and lower edges of pocket; press. Pull up ease stitches to shape curve.



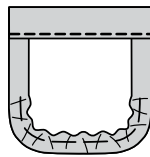
22. Pin pocket to PANTS FRONT (16) along upper placement line, matching notches and small dots. **EDGESTITCH** and **TOPSTITCH** front and lower edges of pocket. Baste upper and side raw edges together.



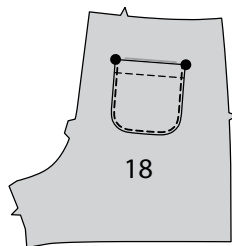
23. Turn in 1/4"(6mm) on upper edge of BACK POCKET (19). Turn upper edge to OUTSIDE along foldline, forming a facing. Stitch along seamline on raw edges. To ease curved edge of pocket, machine baste 1/4"(6mm) from raw edge. Trim seam allowances in the facing area to 1/4"(6mm).



24. Turn corners RIGHT side out, turning facing to the WRONG side. Press, pressing under raw edges along stitching, pulling up ease stitches to shape curve. Stitch facing close to inner edge.

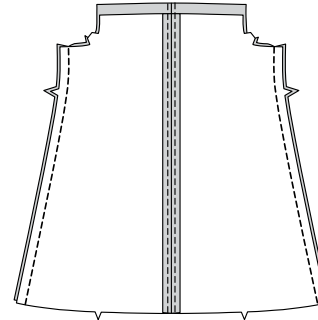


25. Pin back pocket to PANTS BACK (18) matching large dots. **EDGESTITCH** sides and lower edges.

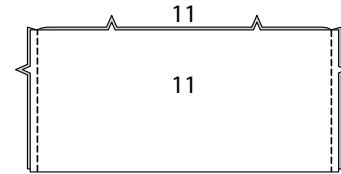


CONTINUE AS FOLLOWS FOR VIEW A

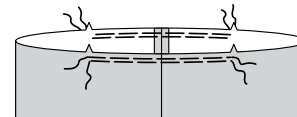
26. Stitch front to back at sides.



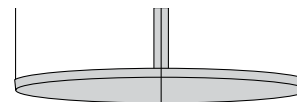
27. Stitch LOWER BAND (11), RIGHT sides together at sides in a 1/2"(1.3cm) seam.



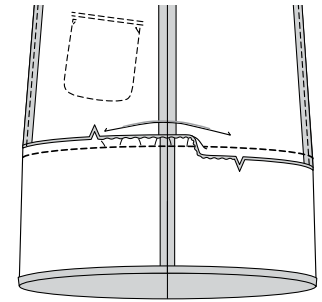
28. **EASESTITCH** upper edge between notches, as shown.



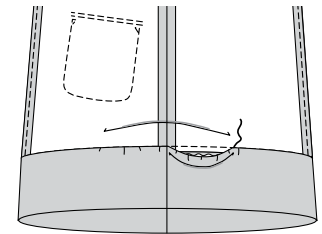
29. Turn under 5/8"(1.5cm) seam allowance on unnotched edge of lower band. Press.



30. Pin lower band to lower edge of pinafore, RIGHT sides together, matching notches, centers, and side seams. Adjust ease. Stitch. Trim. Press seam toward band.

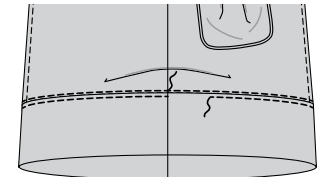


31. Fold lower band along foldline, WRONG sides together pinning pressed edge of band over seam. **SLIPSTITCH** in place, adjusting ease as needed.



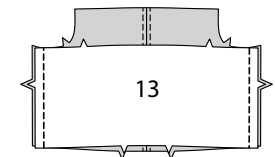
32. **EDGESTITCH** pinafore close to seam.

TOPSTITCH lower band 1/4"(6mm) from seam.

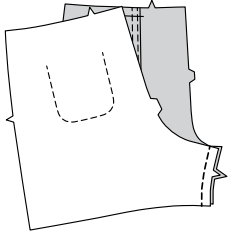


CONTINUE AS FOLLOWS FOR VIEWS B, C

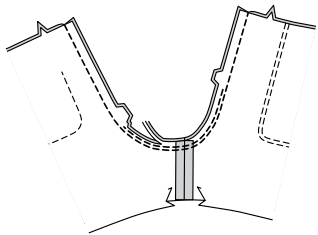
33. Stitch bodice front to BODICE BACK (13) at sides.



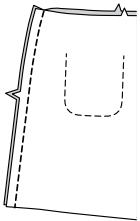
34. Stitch pants back to pants front at inner leg seams.



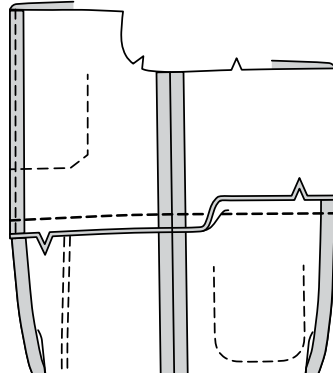
35. With RIGHT sides together, pin center seam, matching inner leg seam and notches. Stitch. Stitch again 1/4" (6mm) away in seam allowances between notches. Trim close to second stitching.



36. Stitch pants front to pants back at sides.

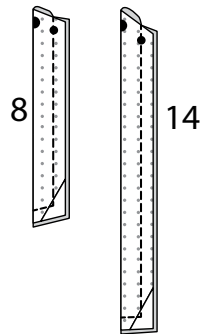


37. Pin bodice to pants, RIGHT sides together, matching centers, seams, and notches. Stitch. Press seam toward bodice.



SHOULDER STRAPS AND FACING
VIEWS A, B, C

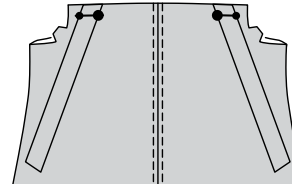
38. Fold SHOULDER STRAP (8 or 14) in half lengthwise, RIGHT sides together. Stitch, leaving marked end open. Trim.



39. Turn right side out. Press. Baste raw edges together.

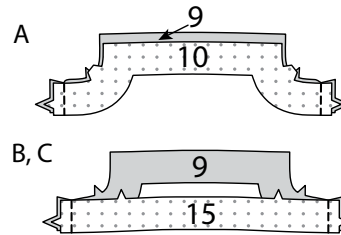


40. Pin straps to back matching large and small dots. Baste.

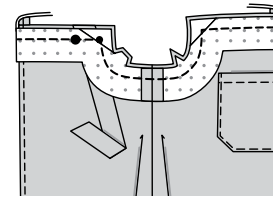


41. VIEW A: Stitch FRONT FACING (9) to BACK FACING (10) at sides. FINISH lower edge of facing.

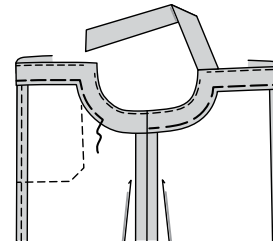
VIEWS B, C: Stitch FRONT FACING (9) to BACK FACING (15) at sides. FINISH lower edge of facing.



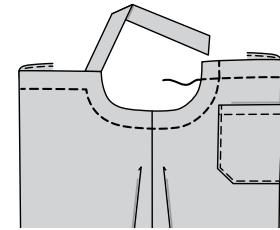
42. Pin facing to pinafore or overalls, RIGHT sides together, matching centers, symbols, and side seams. Stitch. Trim. UNDERSTITCH as far as possible.



43. Turn facing to inside, turning straps out. Press. Baste finished edge in place.

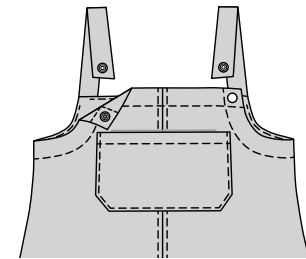


44. On OUTSIDE, TOPSTITCH upper and armhole edges using basting as a guide, crossing stitching at upper edge of front, as shown.



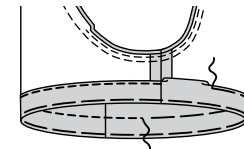
FINISHING

45. Apply socket section of metal snap to front following manufacturer's directions. Try on and mark placement on strap for ball section of snap. Apply ball section of metal snap to strap at marking, following manufacturer's directions.



46. VIEWS B, C: Turn up 1-1/4" (3.2cm) hem on lower edge of overalls. Baste close to fold. Turn under 1/4" (6mm) on raw edge. Baste hem in place close to upper edge.

TOPSTITCH hem along upper basting.





Congrats!

You've completed your sewing adventure

**SHARE
YOUR** LOOK



Post your pattern and tag us
[@simplicity_creative_group](#) and [#simplicitypatterns](#)
for a chance to be featured on our social media.

Look for more PDF patterns at [simplicity.com](https://www.simplicity.com)

Have a question or need help with your sewing project call us at
1-800-782-0323

McCall's
by **design**_{group}

McCall's ©2024 a division of IG Design Group Americas Inc. • Atlanta, GA 30342 USA www.thedesigngroup.com • All Rights Reserved. www.mccall.com • Made in the U.S.A. Fabriqué aux États-Unis.

To be used for individual private home use only and not for commercial or manufacturing purposes. • A usage privé seulement et non à des fins commerciales ou de production en série. • Para uso privado solamente, no se puede utilizar con propósitos de comercialización o de producción en serie.