

McCall's

M8487



Designed and printed in USA

Average

INFANTS' VEST, JACKET AND OVERALLS

Suggested Fabrics: Cotton Blends, Denim, Linen, Twill. **Interfacing:** Lightweight Fusible.

Notions: **A, B:** Four 5/8" (1.5cm) buttons. **C, D:** Two 5/8" (1.5cm) buttons, 1/2 yd. (0.5m) of 1" (2.5cm) elastic.

| Sizes | XS | S | M | L | |
|-------|-----|---|----|----|--|
| Age | 1-3 | 6 | 12 | 18 | |

BODY MEASUREMENTS: Select pattern size based on body measurements

| Weight | 8-12 | 13-17 | 18-21 | 22-25 | lbs. |
|--------|-------|-------|-------|-------|------|
| Height | 18-24 | 25-26 | 27-28 | 29-30 | Ins. |

| | | | | | | |
|--------|------|-----|-----|-----|-----|-----|
| Vest A | 45** | 3/4 | 7/8 | 7/8 | 7/8 | Yd. |
| | 60** | 5/8 | 5/8 | 5/8 | 5/8 | " |

| | | | | | | |
|-------------|-----|-----|-----|-----|-----|---|
| Interfacing | 20" | 3/8 | 3/8 | 1/2 | 1/2 | " |
|-------------|-----|-----|-----|-----|-----|---|

| | | | | | | |
|----------|------|-----|-----|-----|-----|-----|
| Jacket B | 45** | 7/8 | 7/8 | 7/8 | 7/8 | Yd. |
| | 60** | 5/8 | 5/8 | 5/8 | 5/8 | " |

| | | | | | | |
|-------------|-----|-----|-----|-----|-----|---|
| Interfacing | 20" | 1/2 | 1/2 | 5/8 | 5/8 | " |
|-------------|-----|-----|-----|-----|-----|---|

| | | | | | | |
|------------|------|-----|-----|-----|-----|-----|
| Overalls C | 45** | 3/4 | 3/4 | 7/8 | 7/8 | Yd. |
| | 60** | 5/8 | 5/8 | 5/8 | 7/8 | " |

| | | | | | | |
|------------|------|-----|-----|-----|-------|------|
| Overalls D | 45** | 7/8 | 1 | 1 | 1 1/8 | Yds. |
| | 60** | 7/8 | 7/8 | 7/8 | 1 | " |

FINISHED GARMENT MEASUREMENTS (Includes Design and Wearing Ease)

| | | | | | |
|-------------------|--|--|--|--|--|
| Width, lower edge | | | | | |
|-------------------|--|--|--|--|--|

| | | | | | |
|------------------|--------|--------|--------|--------|------|
| Vest A, Jacket B | 20 1/2 | 21 1/2 | 22 1/2 | 23 1/2 | Ins. |
|------------------|--------|--------|--------|--------|------|

| | | | | | |
|-----------------|--|--|--|--|--|
| Width, each leg | | | | | |
|-----------------|--|--|--|--|--|

| | | | | | |
|------------|--------|--------|--------|----|------|
| Overalls C | 13 3/4 | 14 1/2 | 15 1/4 | 16 | Ins. |
|------------|--------|--------|--------|----|------|

| | | | | | |
|------------|----|--------|----|--------|---|
| Overalls D | 11 | 11 1/2 | 12 | 12 1/2 | " |
|------------|----|--------|----|--------|---|

| | | | | | |
|--|--|--|--|--|--|
| Finished back length from base of neck | | | | | |
|--|--|--|--|--|--|

| | | | | | |
|------------------|-------|---|-------|--------|------|
| Vest A, Jacket B | 8 1/2 | 9 | 9 3/4 | 10 1/4 | Ins. |
|------------------|-------|---|-------|--------|------|

| | | | | | |
|------------|--------|--------|--------|----|---|
| Overalls C | 13 3/4 | 14 1/2 | 15 1/4 | 16 | " |
|------------|--------|--------|--------|----|---|

| | | | | | |
|------------|--------|--------|--------|--------|---|
| Overalls D | 18 1/2 | 19 1/2 | 20 1/2 | 21 1/2 | " |
|------------|--------|--------|--------|--------|---|

*with nap **without nap

Moins Facile

GILET, VESTE ET SALOPETTES POUR BÉBÉS

Tissu Conseillé: Cotonnades, Denim, Toile de lin, Twill. **Entoilage:** Thermocollant léger.

Merceria: **A, B:** 4 boutons de 1.5cm. **C, D:** 2 boutons de 1.5cm, 0.5m d'élastique de 2.5cm.

| Tailles | TP | P | M | G | |
|---------|-----|---|----|----|--|
| Âge | 1-3 | 6 | 12 | 18 | |

MESURES DU CORPS: Choisissez la taille du patron basée sur les mesures du corps

| Poids | 3.5-5.5 | 6-8 | 8-9.5 | 10-11.5 | kg |
|---------|---------|-------|-------|---------|----|
| Hauteur | 46-61 | 64-66 | 69-71 | 74-76 | cm |

| | | | | | | |
|---------|--------|-----|-----|-----|-----|---|
| Gilet A | 115cm* | 0.7 | 0.7 | 0.8 | 0.8 | m |
| | 150cm* | 0.6 | 0.6 | 0.6 | 0.6 | " |

| | | | | | | |
|-----------|------|-----|-----|-----|-----|---|
| Entoilage | 51cm | 0.3 | 0.3 | 0.3 | 0.5 | " |
|-----------|------|-----|-----|-----|-----|---|

| | | | | | | |
|---------|--------|-----|-----|-----|-----|---|
| Veste B | 115cm* | 0.8 | 0.8 | 0.8 | 0.8 | m |
| | 150cm* | 0.6 | 0.6 | 0.6 | 0.6 | " |

| | | | | | | |
|-----------|------|-----|-----|-----|-----|---|
| Entoilage | 51cm | 0.5 | 0.5 | 0.5 | 0.6 | " |
|-----------|------|-----|-----|-----|-----|---|

| | | | | | | |
|-------------|--------|-----|-----|-----|-----|---|
| Salopette C | 115cm* | 0.7 | 0.7 | 0.7 | 0.8 | m |
| | 150cm* | 0.6 | 0.6 | 0.6 | 0.8 | " |

| | | | | | | |
|-------------|--------|-----|-----|-----|-----|---|
| Salopette D | 115cm* | 0.8 | 0.9 | 0.9 | 1.0 | m |
| | 150cm* | 0.8 | 0.8 | 0.8 | 0.8 | " |

MESURES DES VÊTEMENTS FINI (Motif et aisance de port compris)

| | | | | | |
|--------------------|--|--|--|--|--|
| Largeur à l'ourlet | | | | | |
|--------------------|--|--|--|--|--|

| | | | | | |
|------------------|----|----|----|----|----|
| Gilet A, Veste B | 52 | 55 | 57 | 60 | cm |
|------------------|----|----|----|----|----|

| | | | | | |
|-----------------------|--|--|--|--|--|
| Largeur, chaque jambe | | | | | |
|-----------------------|--|--|--|--|--|

| | | | | | |
|-------------|----|----|----|----|----|
| Salopette C | 35 | 37 | 39 | 41 | cm |
|-------------|----|----|----|----|----|

| | | | | | |
|-------------|----|----|----|----|---|
| Salopette D | 28 | 29 | 30 | 32 | " |
|-------------|----|----|----|----|---|

| | | | | | |
|--|--|--|--|--|--|
| Longueur finie – dos, votre nuque à l'ourlet | | | | | |
|--|--|--|--|--|--|

| | | | | | |
|------------------|----|----|----|----|----|
| Gilet A, Veste B | 22 | 23 | 24 | 26 | cm |
|------------------|----|----|----|----|----|

| | | | | | |
|-------------|----|----|----|----|---|
| Salopette C | 35 | 37 | 39 | 41 | " |
|-------------|----|----|----|----|---|

| | | | | | |
|-------------|----|----|----|----|---|
| Salopette D | 47 | 50 | 52 | 55 | " |
|-------------|----|----|----|----|---|

*avec sens **sans sens



A



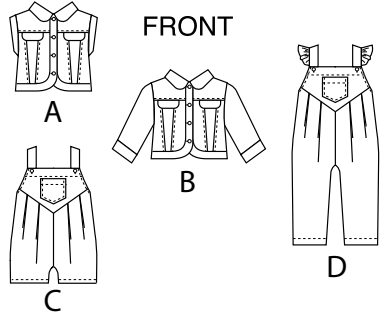
B



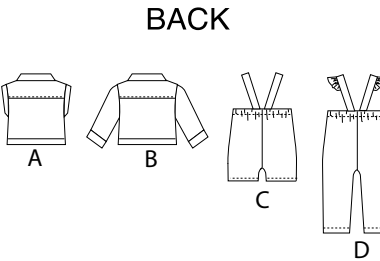
C



D

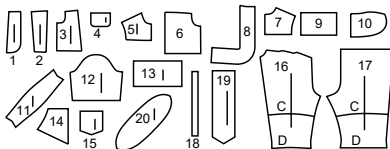


FRONT



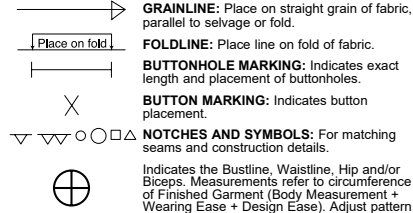
BACK

20 PATTERN PIECES



- 1 Front-A,B
- 2 Middle Front-A,B
- 3 Side Front-A,B
- 4 Flap-A,B
- 5 Yoke Front-A,B
- 6 Back-A,B
- 7 Yoke Back-A,B
- 8 Front Band-A,B
- 9 Back Band-A,B
- 10 Collar-A,B
- 11 Armhole Band-A
- 12 Sleeve-B
- 13 Sleeve Band-B
- 14 Bib-C,D
- 15 Pocket-C,D
- 16 Front-C,D
- 17 Back-C,D
- 18 Elastic Guide for Waist-C,D
- 19 Strap-C,D
- 20 Ruffle-D

PATTERN MARKINGS



GRAINLINE: Place on straight grain of fabric, parallel to selvage or fold.

FOLDLINE: Place line on fold of fabric.

BUTTONHOLE MARKING: Indicates exact length and placement of buttonholes.

BUTTON MARKING: Indicates button placement.

NOTCHES AND SYMBOLS: For matching seams and construction details.

Indicates the Bustline, Waistline, Hip and/or Biceps. Measurements refer to circumference of Finished Garment (Body Measurement + Wearing Ease + Design Ease). Adjust pattern if necessary. The measurement excludes pleats, tucks, darts and seam allowances.

SEAM ALLOWANCE: 5/8" (1.5cm) included unless otherwise indicated, but not printed on tissue.

ADJUST IF NECESSARY

Lengthen or Shorten at adjustment lines (==) or where indicated on pattern. If substantial length is added, you may need to purchase additional fabric.

TO SHORTEN: Crease along adjustment line. Make a fold half the amount needed. Tape in place.

TO LENGTHEN: Slash between adjustment lines. Spread amount as needed, keeping edges parallel. Tape over paper.

When Alteration lines are not on tissue, lengthen or shorten at lower edge.

CUTTING AND MARKING

SHRINK FABRIC if not labeled pre-shrunk. Press.

CIRCLE LAYOUT for View, Size, Fabric Width.

Use **WITH NAP** layout for fabrics with one-way designs, nap, pile or surface shading. Because most knits have surface shading, a with nap layout is used.

For **DOUBLE THICKNESS (WITH FOLD)** - fold fabric with right sides together.

*** DOUBLE THICKNESS (WITHOUT FOLD)** - For fabrics with nap, fold fabric crosswise, right sides together. Mark as shown. Cut along crosswise fold of fabric (A). Turn upper layer 180° so arrows go in same direction and place over lower layer, right sides together (B).

For **SINGLE THICKNESS** - place fabric right side up. (For Fur Pile fabrics, place pile side down.)

★ Cut other pieces first, allowing enough fabric to cut this piece. Open fabric. For "Cut 1" pieces, cut piece once on single layer of fabric with piece face up on right side of fabric.

Pattern may have cutting lines for several sizes. Select the proper cutting line or pattern pieces for your size.

Before **CUTTING** place all pieces on fabric according to layout. **Pin.** (Layouts show approximate position of pattern pieces; position may vary according to your pattern size.) Cut **ACCURATELY**, cutting notches outward.

Before removing pattern, **TRANSFER MARKINGS** and lines of construction to Wrong Side of fabric, using the Pin and Chalk Pencil method or Tracing Paper and Dressmaker Wheel. Markings needed on right side of fabric should be thread traced.

NOTE: Broken-line boxes (a! b! c!) in layouts represent pieces cut by measurements provided.

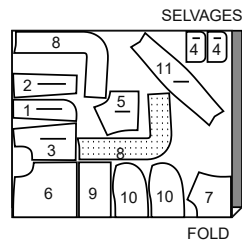
CUTTING LAYOUTS

| | | | |
|-----------------------|-----------------------|----------------------|----------------------|
| RIGHT SIDE OF PATTERN | WRONG SIDE OF PATTERN | RIGHT SIDE OF FABRIC | WRONG SIDE OF FABRIC |
|-----------------------|-----------------------|----------------------|----------------------|

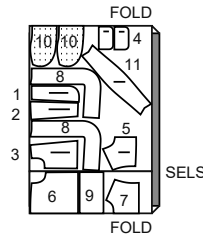
VEST A

use pieces: 1 2 3 4 5 6 7 8 9 10 11

45" (115 cm)
with nap
all sizes



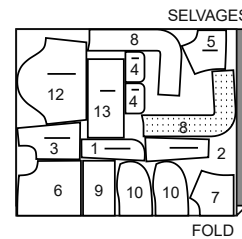
60" (150 cm)
with nap
all sizes



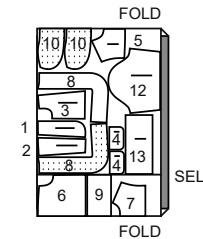
JACKET B

use pieces: 1 2 3 4 5 6 7 8 9 10 12 13

45" (115 cm)
with nap
all sizes



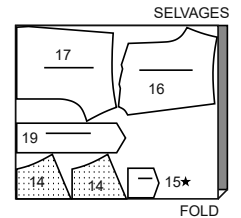
60" (150 cm)
with nap
all sizes



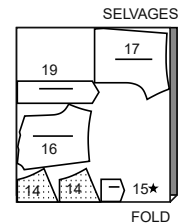
OVERALL C

use pieces: 14 15 16 17 19

45" (115 cm)
with nap
all sizes



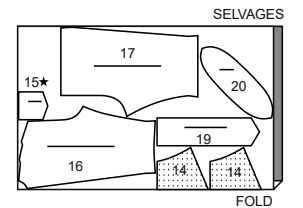
60" (150 cm)
with nap
all sizes



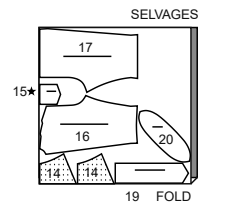
OVERALL D

use pieces: 14 15 16 17 19 20

45" (115 cm)
with nap
all sizes



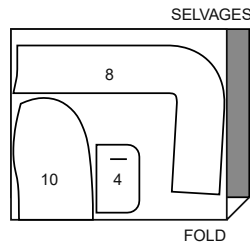
60" (150 cm)
with nap
all sizes



INTERFACING A

use pieces: 4 8 10

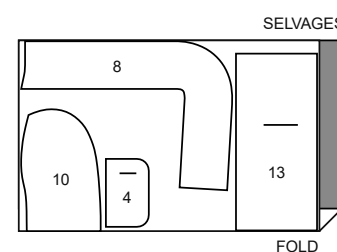
20" (51 cm)
all sizes



INTERFACING B

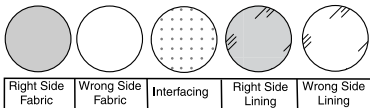
use pieces: 4 8 10 13

20" (51 cm)
all sizes



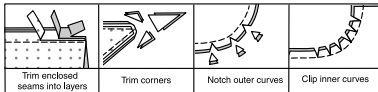
SEWING INFORMATION

FABRIC KEY



SEAM ALLOWANCES

Use 5/8" (1.5cm) seam allowances unless otherwise indicated.



PIN AND FIT

Pin or baste seams, **RIGHT SIDE TOGETHER**, matching notches. Fit garment before stitching major seams.

PRESS

Press seam allowances flat; then open unless otherwise stated. Clip where necessary so they lie flat.

GLOSSARY

Sewing terms appearing in **BOLD TYPE** in Sewing Instructions are explained below.

EDGESTITCH - Stitch close to finished edge or seam.

GATHER - Stitch along seamline and again 1/4" (6mm) away in seam allowance, using long machine stitches. Pull thread ends when adjusting to fit.

NARROW HEM - Turn in hem; press, easing in fullness if necessary. Open out hem. Turn in again so raw edge is along crease; press. Turn in along crease; stitch.

SLIPSTITCH - Slide needle through a folded edge, then pick up a thread of underneath fabric.

STAYSTITCH - Stitch 1/8" (3mm) from seamline in seam allowance (usually 1/2" (1.3cm) from raw edge).

TOPSTITCH - On outside, stitch 1/4" (6mm) from edge, seam or previous stitching, using presser foot as guide, or stitch where indicated in instructions.

UNDERSTITCH - Open out facing or underside of garment; stitch to seam allowance close to seam.

SEWING TUTORIALS



Build your skills viewing short, easy-to-follow videos at simplicity.com/sewingtutorials

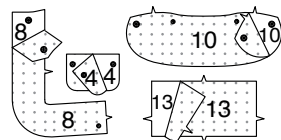
SEWING DIRECTIONS

VEST A, JACKET B

NOTE: Under each sub-heading, the first View will be illustrated, unless otherwise indicated.

INTERFACING

1. Pin **INTERFACING** to wrong side of each matching **FABRIC** section. Fuse, following manufacturer's instructions. Trim corners diagonally inside seam allowance, as shown. Fuse, following manufacturer's instructions.

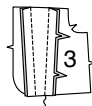


FRONT AND BACK

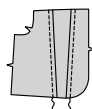
2. With **RIGHT** sides together, pin **FRONT** (1) to **MIDDLE FRONT** (2), matching notches. Stitch. Press seam toward front.



3. With **RIGHT** sides together, pin **SIDE FRONT** (3) to middle front, matching notches. Stitch. Press seam toward side front.



4. **TOPSTITCH** front and side front seams, as shown.



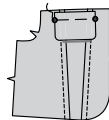
5. For each side, stitch one interfaced and one uninterfaced **FLAP** (4) section together in a 3/8" (1cm) seam, leaving upper edge open, as shown. Trim.



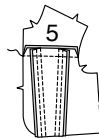
6. Turn. Press. Baste raw edges together.



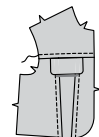
7. Pin flap to upper edge of front, matching symbols, having raw edges even. Baste.



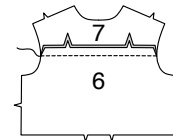
8. With **RIGHT** sides together, pin **YOKE FRONT** (5) to upper edge of front. Stitch. Press seam toward yoke front.



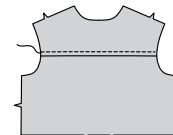
9. **TOPSTITCH** yoke front seam.



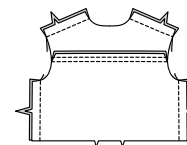
10. Pin **YOKE BACK** (7) to upper edge of **BACK** (6), matching notches. Stitch. Press seam toward yoke back.



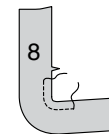
11. **TOPSTITCH** yoke back seam.



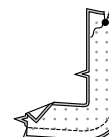
12. Stitch front to back at shoulders and sides.



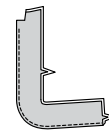
13. **STAYSTITCH** inner edge of **FRONT BAND** (8) sections along curve, as shown.



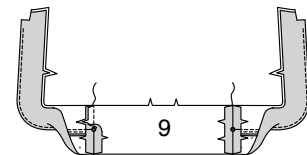
14. For each side, with **RIGHT** sides together, pin one interfaced front band section to one uninterfaced front band section. Stitch outer and upper edges, ending stitching at large dot, as shown. Clip to large dot. Trim. For facing, **UNDERSTITCH** interfaced front band.



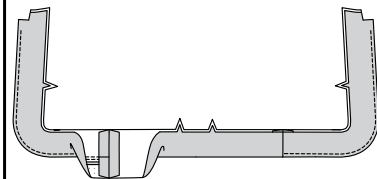
15. Turn. Press.



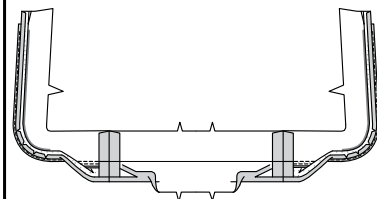
16. Open out facing at lower edge. Pin front bands to **BACK BAND** (9) at side edges, matching small dots and notches. Stitch.



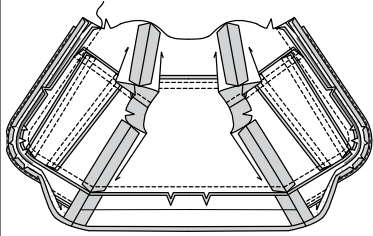
17. With **WRONG** sides together, fold back band along foldline. Press.



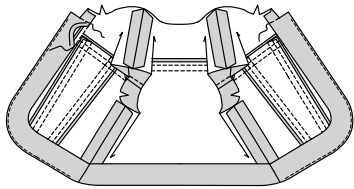
18. Turn in seam allowance on front band facing and back band, clipping facing where necessary. Press. Trim pressed seam allowance to 3/8" (1cm).



19. With RIGHT sides together, pin front and back band to front and lower edges, clipping front band where necessary. Stitch, keeping pressed edge free. Trim. Press seam toward band.

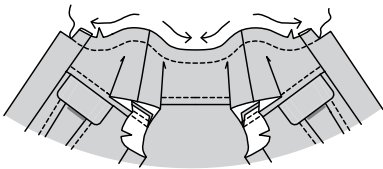


20. SLIPSTITCH pressed edge of band facing over seam. Baste upper edges.

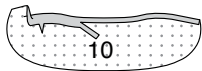


COLLAR, ARMHOLE AND FINISHING

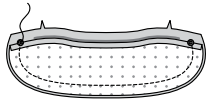
21. STAYSTITCH neck edge, in direction of arrows.



22. For facing, turn in seam allowance on lower edge of interfaced COLLAR (10) section. Press, easing in fullness if necessary. Trim pressed seam allowance to 3/8"(1cm).



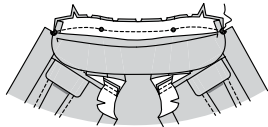
23. With right sides together, pin collar facing to collar, matching centers and symbols. Stitch, leaving notched edge open. Trim.



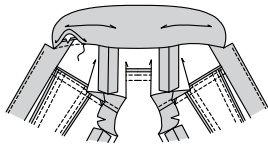
24. Turn. Press.



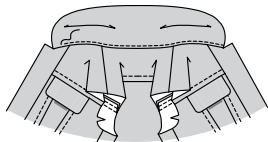
25. Pin collar to neck edge, matching centers, placing small dots at shoulder seams, matching large dots, clipping neck edge where necessary. Baste. Stitch. Trim. Press seam toward collar.



26. SLIPSTITCH pressed edge over seam.

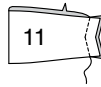


27. EDGESTITCH lower edge of collar, as shown.



View A:

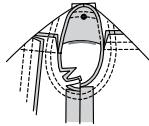
28. Stitch ends of ARMHOLE BAND (11) together.



29. With WRONG sides together, fold armhole band along foldline. Press. Baste raw edges.

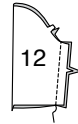


30. Pin band into armhole, placing small dot at shoulder seam, matching notches. Stitch. Stitch again 1/4"(6mm) away in seam allowance. Trim close to stitching. Press seam allowances flat. Turn seam toward vest.

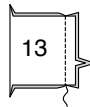


View B:

31. Stitch SLEEVE (12) seam.



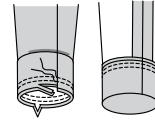
32. Stitch ends of SLEEVE BAND (13) together.



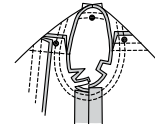
33. With WRONG sides together, fold sleeve band along foldline. Press. Baste raw edges.



34. Pin band to lower edge of sleeve, matching notches and seams. Stitch. Stitch again 1/4"(6mm) away in seam allowance. Trim close to stitching. Press seam toward sleeve.



35. With right sides together, pin sleeve into armhole, placing center small dot at shoulder seam, matching remaining small dots. Stitch. Stitch again 1/4"(6mm) away in seam allowance. Trim close to stitching. Press seam allowances flat. Turn seam toward sleeve.

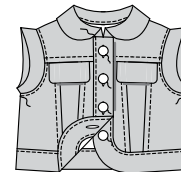


Views A, B:

36. Make buttonholes in RIGHT front at markings.



37. Lap opening edges, as shown, matching centers. Using buttonholes as guides, make button markings on LEFT front. Sew buttons at markings. EDGESTITCH inner edge of front and back band, as shown. EDGESTITCH armhole seams.

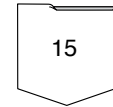


OVERALLS C, D

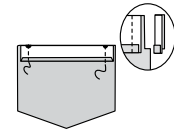
NOTE: Under each sub-heading, the first View will be illustrated, unless otherwise indicated.

FRONT

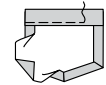
1. Turn in 1/4"(6mm) on upper edge of each POCKET (15). Press.



2. Turn upper edge to outside along foldline. Stitch ends. Trim.



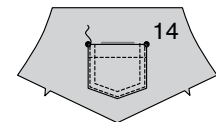
3. Turn upper edge of pocket to inside, turning in remaining 3/8"(1cm) seam allowances, diagonally folding corners. Press. Baste close to inner pressed edge.



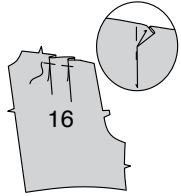
4. TOPSTITCH along basting.



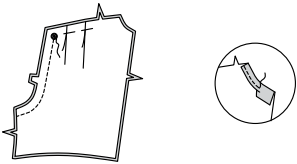
5. Pin pocket to one BIB (14) section matching symbols. EDGESTITCH and TOPSTITCH side and lower edges, reinforcing upper ends. NOTE: Remaining bib section will be used as facing.



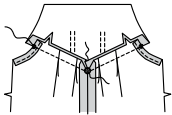
6. To make pleats in FRONT (16), on outside, crease along solid lines. Bring creases to broken lines; baste. Baste across upper edge. Press.



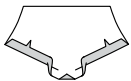
7. Stitch center front seam, ending stitching at large dot. Make NARROW HEM at side edges, as shown.



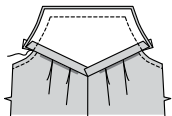
8. Pin bib to front matching notches and symbols. Stitch, breaking stitching at large dot. Trim. Press seam toward bib.



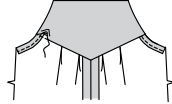
9. Turn in seam allowances on lower edges of bib FACING, diagonally folding corner, as shown. Press.



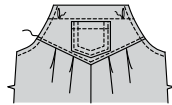
10. With RIGHT sides together, pin bib facing to bib. Stitch upper and side edges. Trim.



11. Turn facing to INSIDE. Press. SLIPSTITCH pressed edges over seams.

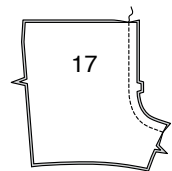


12. TOPSTITCH bib 1/4"(2.5cm) from upper edge, as shown. Make buttonholes in bib at markings. TOPSTITCH side edges, as shown, connecting with hem stitching. EDGESTITCH lower edge of bib.

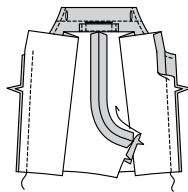


BACK AND FINISHING

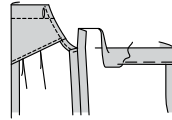
13. Stitch BACK (17) sections together at center back seam.



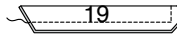
14. Stitch front to back at sides, matching notches. Press seams open, continuing to press in seam allowances on side back edges.



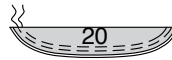
15. Turn upper edge of back to inside along foldline, turning in 1/4"(6mm) on raw edge. Press. Baste close to pressed edge.



View C:
16. With RIGHT sides together, fold STRAP (19) along foldline. Stitch, keeping angled end free. Trim.



View D:
17. With WRONG sides together, fold RUFFLE (20) along foldline. Press. Baste and GATHER raw edges.



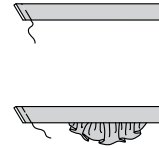
18. Pin ruffle to STRAP (19), as shown, matching small dots. Adjust gathers; baste.



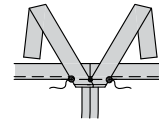
19. With RIGHT sides together, fold strap along foldline. Pin raw edges together. Stitch, leaving angled end open, being careful not to catch ruffle in stitching. Trim.



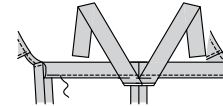
Views C, D:
20. Turn strap. Press. Baste raw edges along 3/8"(1cm) seam allowance.



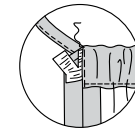
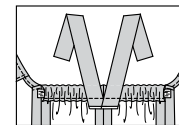
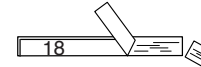
21. On INSIDE, pin straps to back, matching symbols. Baste.



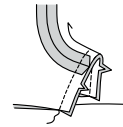
22. To make casing for elastic, stitch back along basting, continuing across straps.



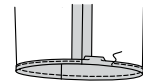
23. Cut elastic the length of ELASTIC GUIDE FOR WAIST (18). Insert elastic through casing, extending ends 5/8"(1.5cm) past side seams. Baste. Stitch across ends, catching elastic in stitching. Trim ends of elastic.



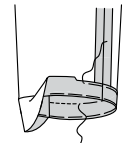
24. With RIGHT sides together, pin front to back at inner leg edges, matching center seams.



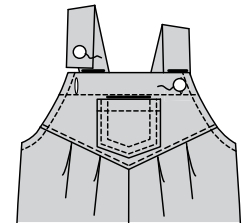
View C:
25. Make NARROW HEM at lower edge.



View D:
26. Turn up overalls hem. Baste close to fold. Turn in 1/4"(6mm) on raw edge. Baste hem in place close to upper edge. Press. TOPSTITCH hem along upper basting.



Views C, D:
27. Sew buttons to straps at small dots.





Congrats!

You've completed your sewing adventure

**SHARE
YOUR** LOOK



Post your pattern and tag us
[@simplicity_creative_group](#) and [#simplicitypatterns](#)
for a chance to be featured on our social media.

Look for more PDF patterns at [simplicity.com](#)

Have a question or need help with your sewing project call us at
1-800-782-0323

McCall's
by **design**_{group}

McCall's ©2024 a division of IG Design Group Americas Inc. • Atlanta, GA 30342 USA [www.thedesigngroup.com](#) • All Rights Reserved. [www.mccall.com](#) • Made in the U.S.A. Fabriqué aux États-Unis.

To be used for individual private home use only and not for commercial or manufacturing purposes. • A usage privé seulement et non à des fins commerciales ou de production en série. • Para uso privado solamente, no se puede utilizar con propósitos de comercialización o de producción en serie.