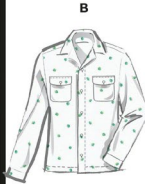


**McCall's**

M8486



Designed and  
printed in USA

#### MEN'S SHIRTS AND SHORTS

**Suggested Fabrics:** Activewear Wovens, Cotton Blends, Lightweight Nylon, Swimwear Wovens. **Interfacing A,B:** Lightweight Fusible.

**Notions:** A: Five ¾" (1.5cm) buttons. B: Seven ¾" (1.5cm) buttons. C,D: 1½ yds. (1.0m) of 1¼" (3cm) elastic, 1¾ yds. (1.6m) of ¾" (1cm) cord (for drawstring), two ½" (1.3cm) grommets.

Sizes	34	36	38	40	42	44	46	48	50	52
-------	----	----	----	----	----	----	----	----	----	----

**BODY MEASUREMENTS:** Select pattern size based on body measurements

Chest	34	36	38	40	42	44	46	48	50	52	Ins.
Waist	28	30	32	34	36	39	42	44	46	48	"
Hip	35	37	39	41	43	45	47	49	51	53	"

Shirt A	45**	2	2½	2¼	2¼	2¼	2¼	2½	2½	2½	Yds.
60**	1¾	1¾	1½	1½	1½	1½	1½	1¾	1¾	1¾	"

**Interfacing** 20" - 1 yd.

Shirt B	45**	2½	2½	2½	2½	2½	2½	2¾	2¾	3	Yds.
60**	1¾	2	2	2	2	2	2	2¼	2¼	2¾	"

**Interfacing** 20" 1½ 1½ 1½ 1½ 1½ 1½ 1½ 1½ 1½ 1½ "

Shorts C	45**	1½	1¼	1¼	1¼	1¼	1¼	1¼	1¼	1¼	Yds.
60**	¾	1¼	1¼	1¼	1¼	1¼	1¼	1¼	1¼	1¼	"

Shorts D	45**	1¾	1¾	1¾	1¾	1½	1½	1½	2	2	Yds.
60**	1½	1¼	1¾	1¾	1½	1½	1½	1½	1½	1½	"

#### FINISHED GARMENT MEASUREMENTS (Includes Design and Wearing Ease)

A,B Chest	40	42	44	46	48	50	52	54	56	58	Ins.
-----------	----	----	----	----	----	----	----	----	----	----	------

A,B Waist	39	41	43	45	47	49	51	53	55	57	"
-----------	----	----	----	----	----	----	----	----	----	----	---

C,D Hip	38½	40½	42½	44½	46½	48½	50½	52½	54½	56½	"
---------	-----	-----	-----	-----	-----	-----	-----	-----	-----	-----	---

**Width, lower edge**

Shirt A,B	39	41	43	45	47	49	51	53	55	57	Ins.
-----------	----	----	----	----	----	----	----	----	----	----	------

**Width, each leg**

Shorts C	22½	23¼	24¼	25¼	26¼	27¼	28¼	29¼	30¼	31¼	Ins.
----------	-----	-----	-----	-----	-----	-----	-----	-----	-----	-----	------

Shorts D	20	21	22	23	24	25	26	27	28	29	"
----------	----	----	----	----	----	----	----	----	----	----	---

**Finished back length from base of neck**

Shirt A,B	25¼	26	26¼	26½	26¾	27	27¼	27½	27¾	28	Ins.
-----------	-----	----	-----	-----	-----	----	-----	-----	-----	----	------

**Finished side length from waist**

Shorts C	17¾	18	18¼	18½	18¾	19	19¼	19½	19¾	20	Ins.
----------	-----	----	-----	-----	-----	----	-----	-----	-----	----	------

Shorts D	21¼	22	22¼	22½	22¾	23	23¼	23½	23¾	24	"
----------	-----	----	-----	-----	-----	----	-----	-----	-----	----	---

\*with nap \*\*without nap

Easy

Facile

#### CHEMISES ET SHORT POUR HOMMES

**Tissus Conseillés:** Tissés pour vêtements de sport, Cotonnades, Nylon léger, Tissés pour maillots de bain.

**Entoilage A,B:** Thermocollant léger.

**Mercerie:** A: 5 boutons de 1.5cm. B: 7 boutons de 1.5cm. C,D: 1.0m d'élastique de 3cm, 1.6m de cordon de 1cm (pour le cordon de coulisse), 2 ceilllets de 1.3cm.

Tailles	34	36	38	40	42	44	46	48	50	52
---------	----	----	----	----	----	----	----	----	----	----

**MESURES DU CORPS:** Choisissez la taille du patron basée sur les mesures du corps

Poitrine	87	92	97	102	107	112	117	122	127	132	cm
----------	----	----	----	-----	-----	-----	-----	-----	-----	-----	----

Taille	71	76	82	87	92	99	107	112	117	122	"
--------	----	----	----	----	----	----	-----	-----	-----	-----	---

**Hanches (23cm au-dessous de la taille)**

	89	94	99	104	109	115	119	124	128	135	cm
--	----	----	----	-----	-----	-----	-----	-----	-----	-----	----

Chemise A	115cm*	1.7	1.9	1.9	2.1	2.1	2.1	2.3	2.3	2.3	m
-----------	--------	-----	-----	-----	-----	-----	-----	-----	-----	-----	---

150cm*	1.3	1.3	1.3	1.4	1.4	1.4	1.5	1.7	1.7	1.7	"
--------	-----	-----	-----	-----	-----	-----	-----	-----	-----	-----	---

**Entoilage** 51cm - 0.9m

Chemise B	115cm*	2.3	2.3	2.4	2.4	2.4	2.4	2.6	2.6	2.7	m
-----------	--------	-----	-----	-----	-----	-----	-----	-----	-----	-----	---

150cm*	1.7	1.8	1.8	1.8	1.8	1.8	1.8	2.1	2.1	2.1	"
--------	-----	-----	-----	-----	-----	-----	-----	-----	-----	-----	---

**Entoilage** 51cm 1.0 1.0 1.0 1.0 1.0 1.0 1.0 1.0 1.1 1.1 "

Short C	115cm*	1.0	1.0	1.1	1.1	1.1	1.3	1.3	1.6	1.6	m
---------	--------	-----	-----	-----	-----	-----	-----	-----	-----	-----	---

150cm*	0.8	1.0	1.1	1.1	1.1	1.1	1.1	1.1	1.1	1.1	"
--------	-----	-----	-----	-----	-----	-----	-----	-----	-----	-----	---

Short D	115cm*	1.3	1.3	1.3	1.3	1.3	1.4	1.4	1.7	1.8	m
---------	--------	-----	-----	-----	-----	-----	-----	-----	-----	-----	---

150cm*	1.0	1.1	1.3	1.3	1.3	1.4	1.4	1.4	1.4	1.4	"
--------	-----	-----	-----	-----	-----	-----	-----	-----	-----	-----	---

#### MESURES DES VÊTEMENTS FINI (Motif et aisance de port compris)

A,B Poitrine	102	107	112	117	122	127	132	137	142	147	cm
--------------	-----	-----	-----	-----	-----	-----	-----	-----	-----	-----	----

A,B Taille	99	104	109	114	119	124	130	135	140	145	"
------------	----	-----	-----	-----	-----	-----	-----	-----	-----	-----	---

C,D Hanches	98	103	108	113	118	123	128	133	138	144	"
-------------	----	-----	-----	-----	-----	-----	-----	-----	-----	-----	---

**Largeur à l'ourlet**

Chemise A,B	99	104	109	114	119	124	130	135	140	145	cm
-------------	----	-----	-----	-----	-----	-----	-----	-----	-----	-----	----

**Largeur, chaque jambe**

Short C	57	59	62	64	67	69	72	74	77	79	cm
---------	----	----	----	----	----	----	----	----	----	----	----

Short D	51	53	56	58	61	64	66	69	71	74	"
---------	----	----	----	----	----	----	----	----	----	----	---

**Longueur finie – dos, votre nuque à l'ourlet**

Chemise A,B	65	66	67	67	68	69	69	70	70	71	cm
-------------	----	----	----	----	----	----	----	----	----	----	----

**Longueur finie – côté, taille à l'ourlet**

Short C	45	46	46	47	48	48	49	50	50	51	cm
---------	----	----	----	----	----	----	----	----	----	----	----

Short D	55	56	57	57	58	58	59	60	60	61	"
---------	----	----	----	----	----	----	----	----	----	----	---

\*avec sens \*\*sans sens



A



B



C



D

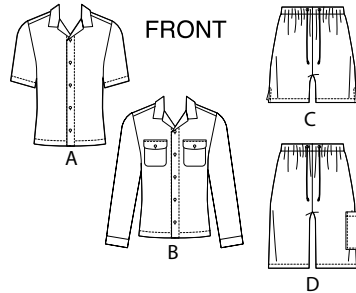
M8486

Page 1 of 4

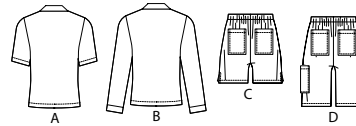
# McCall's®

English

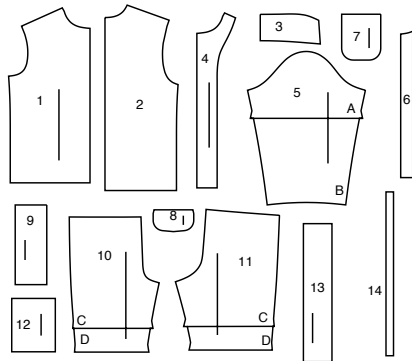
1-800-782-0323



BACK

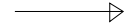


## 14 PATTERN PIECES

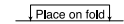


- 1 Front-A,B
- 2 Back-A,B
- 3 Collar-A,B
- 4 Front Facing-A,B
- 5 Sleeve-A,B
- 6 Guide for Buttonholes-A,B
- 7 Pocket-B
- 8 Flap-B
- 9 Sleeve Band-B
- 10 Front-C,D
- 11 Back-C,D
- 12 Pocket-C,D
- 13 Casing-C,D
- 14 Guide for Elastic-C,D

## PATTERN MARKINGS



**GRAINLINE:** Place on straight grain of fabric, parallel to selvage or fold.



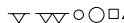
**FOLDLINE:** Place line on fold of fabric.



**BUTTONHOLE MARKING:** Indicates exact length and placement of buttonholes.



**BUTTON MARKING:** Indicates button placement.



**NOTCHES AND SYMBOLS:** For matching seams and construction details.



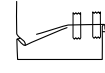
Indicates the Bustline, Waistline, Hip and/or Biceps. Measurements refer to circumference of Finished Garment (Body Measurement + Wearing Ease + Design Ease). Adjust pattern if necessary. The measurement excludes pleats, tucks, darts and seam allowances.

**SEAM ALLOWANCE:** 5/8" (1.5cm) included unless otherwise indicated, but not printed on tissue.

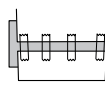
## ADJUST IF NECESSARY

Lengthen or Shorten at adjustment lines (==) or where indicated on pattern. If substantial length is added, you may need to purchase additional fabric.

**TO SHORTEN:** Crease along adjustment line. Make a fold half the amount needed. Tape in place.



**TO LENGTHEN:** Slash between adjustment lines. Spread amount as needed, keeping edges parallel. Tape over paper.



When Alteration lines are not on tissue, lengthen or shorten at lower edge.

## CUTTING AND MARKING

**SHRINK FABRIC** if not labeled pre-shrunk. Press.

**CIRCLE LAYOUT** for View, Size, Fabric Width.

Use **WITH NAP** layout for fabrics with one-way designs, nap, pile or surface shading. Because most knits have surface shading, a with nap layout is used.

For **DOUBLE THICKNESS (WITH FOLD)** - fold fabric with right sides together.

**\* DOUBLE THICKNESS (WITHOUT FOLD)** - For fabrics with nap, fold fabric crosswise, right sides together. Mark as shown. Cut along crosswise fold of fabric (A). Turn upper layer 180° so arrows go in same direction and place over lower layer, right sides together (B).

For **SINGLE THICKNESS** - place fabric right side up. (For Fur Pile fabrics, place pile side down.)

★ Cut other pieces first, allowing enough fabric to cut this piece. Open fabric. For "Cut 1" pieces, cut piece once on single layer of fabric with piece face up on right side of fabric.

Pattern may have cutting lines for several sizes. Select the proper cutting line or pattern pieces for your size.

Before **CUTTING** place all pieces on fabric according to layout. Pin. (**Layouts show approximate position of pattern pieces; position may vary according to your pattern size.**) Cut **ACCURATELY**, cutting notches outward.

Before removing pattern, **TRANSFER MARKINGS** and lines of construction to Wrong Side of fabric, using the Pin and Chalk Pencil method or Tracing Paper and Dressmaker Wheel. Markings needed on right side of fabric should be thread traced.

**NOTE:** Broken-line boxes (a! b! c!) in layouts represent pieces cut by measurements provided.

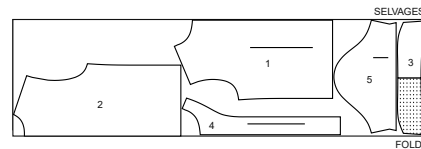
## CUTTING LAYOUTS

RIGHT SIDE OF PATTERN	WRONG SIDE OF PATTERN	RIGHT SIDE OF FABRIC	WRONG SIDE OF FABRIC
-----------------------	-----------------------	----------------------	----------------------

## SHIRT A

use pieces: 1 2 3 4 5

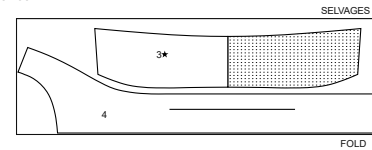
45" (115 cm)  
with nap  
sizes 34 346 38 40 42 44 46



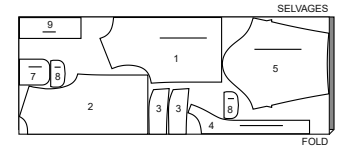
## INTERFACING A

use pieces: 3 4

20" (51 cm)  
all sizes



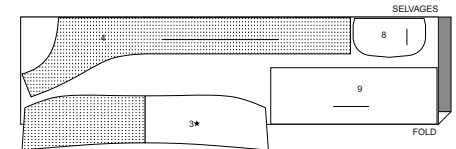
60" (150 cm)  
with nap  
sizes 48 50 52



## INTERFACING B

use pieces: 3 4 8 9

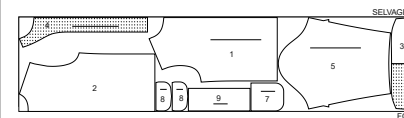
20" (51 cm)  
all sizes



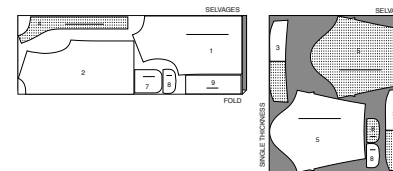
## SHIRT B

use pieces: 1 2 3 4 5 7 8 9

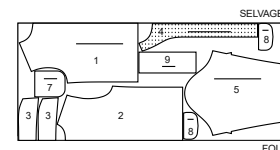
45" (115 cm)  
with nap  
sizes 34 346 38 40 42 44 46



45" (115 cm)  
with nap  
sizes 48 50 52



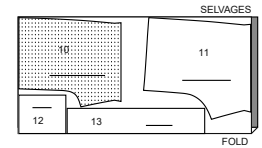
60" (150 cm)  
with nap  
sizes 34 346 38 40 42 44 46



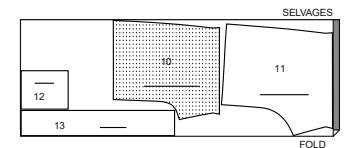
## SHORTS C

use pieces: 10 11 12 13

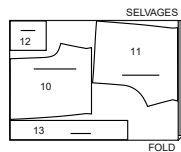
45" (115 cm)  
with nap  
sizes 34 346 38 40 42 44 46



45" (115 cm)  
with nap  
sizes 48 50 52



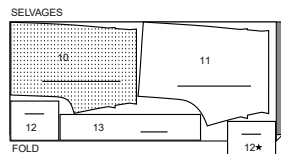
60" (150 cm)  
with nap  
all sizes



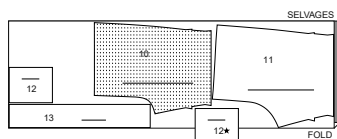
## SHORTS D

use pieces: 10 11 12 13

45" (115 cm)  
with nap  
sizes 34 36 38 40 42 44 46



45" (115 cm)  
with nap  
sizes 48 50 52

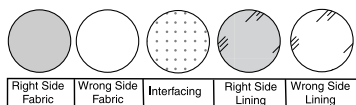


60" (150 cm)  
with nap  
all sizes



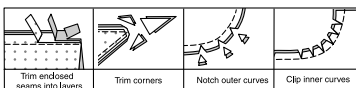
## SEWING INFORMATION

### FABRIC KEY



### SEAM ALLOWANCES

Use 1/4" (6mm) seam allowances unless otherwise indicated.



### PIN AND FIT

Pin or baste seams, **RIGHT SIDE TOGETHER**, matching notches. Fit garment before stitching major seams.

### PRESS

Press seam allowances flat; then open unless otherwise stated. Clip where necessary so they lie flat.

## GLOSSARY

Read **General Directions** on page 1 before you begin.

Sewing methods in **BOLD TYPE** have Sewing Tutorial Video available. Scan **QR CODE** to watch videos:

**DOUBLE-STITCH** - see **Machine Stitches: "how to double-stitch"** video

**EDGE STITCH** - see **Machine Stitches: "how to edgestitch"** video

**FINISH** - see **Seams: "how to finish seam allowances"** video

**NARROW HEM** - see **Hems: "sewing narrow hems"** video

**REINFORCE** - see **Machine Stitches: "how to reinforce"** video

**SLIP STITCH** - see **Hand Stitching: "how to slip stitch"** video

**STAYSTITCH** - see **Machine Stitches: "how to do stay-stitching"** video

**TOPSTITCH** - see **Machine Stitches: "how to topstitch"** video

**PATTERN PIECES WILL BE IDENTIFIED BY NUMBERS THE FIRST TIME THEY ARE USED.**

**STITCH SEAMS WITH RIGHT SIDES TOGETHER UNLESS OTHERWISE STATED.**

### SEWING TUTORIALS



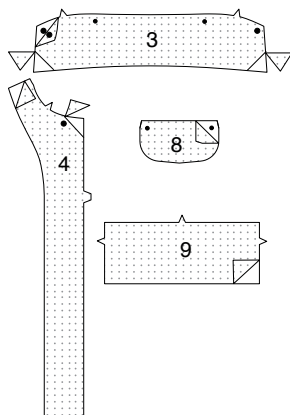
Build your skills viewing short, easy-to-follow videos at [simplicity.com/sewingtutorials](http://simplicity.com/sewingtutorials)

### SHIRT A, B

**NOTE:** The first view mentioned will be shown, unless otherwise indicated.

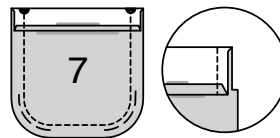
### INTERFACING

**1.** Trim corners from **INTERFACING**, as shown. Fuse **INTERFACING** to wrong side of each matching **FABRIC** section, following manufacturer's instructions.

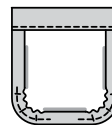


### VIEW B POCKETS

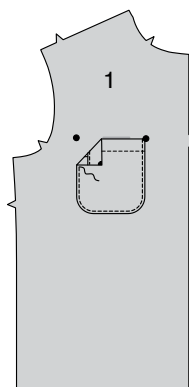
**2.** Turn in 1/4" (6mm) on upper edge of each **POCKET (7)** section. Press. Turn upper edge to outside along foldline, forming a facing. Stitch along seamline on raw edges. Trim seam allowances in the facing area to 1/4" (6mm). Machine-baste curved edges of pocket 3/8" (1cm) from raw edge.



**3.** Turn corners right side out, turning facing to the wrong side. Press, pressing under raw edges along stitching; pull threads to ease in fullness on curves. Press. Stitch facing close to inner edge.



**4.** Pin pockets to **FRONT (1)** matching large dots. **EDGE STITCH** sides and lower edges. If desired, **TOPSTITCH** sides and lower edges.



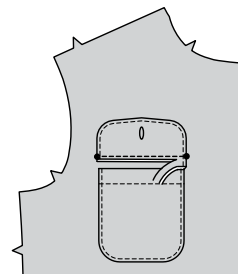
**5.** For each flap, pin one interfaced **FLAP (8)** section to an uninterfaced flap section, right sides together. Stitch sides and lower edges, leaving upper edge open. Trim.



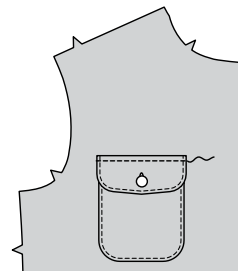
**6.** Turn right side out. Press. Baste raw edges together. **EDGE STITCH** finished edges. If desired, **TOPSTITCH** finished edges of flap. Make buttonhole in flap at marking.



**7.** Pin flaps to front, matching small dots, placing seamline along placement line and seam allowance below placement line. Stitch between small dots. Trim flap seam allowance to a scant 1/4" (6mm), being careful not to cut garment.

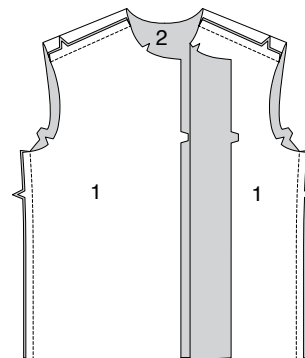


**8.** Turn flap down, press. **TOPSTITCH** upper edge of flap, encasing trimmed edges. Sew button to pocket under buttonhole on flap.



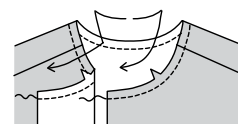
### CONTINUE AS FOLLOWS FOR VIEWS A AND B

**9.** Stitch **FRONT (1)** to **BACK (2)** at shoulders and sides.

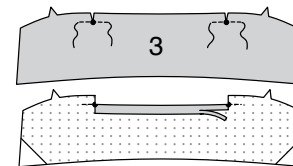


### COLLAR AND FACING

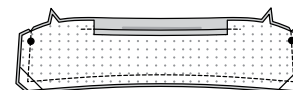
**10.** **STAYSTITCH** neck edge of shirt in direction of arrows.



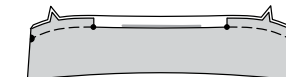
**11.** **REINFORCE** neck edge of interfaced **COLLAR (3)** through small dots, as shown. Clip to small dots. Turn in seam allowance between clips. Press. Trim pressed seam allowance to 3/8" (1cm).



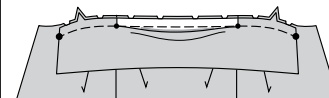
**12.** Pin collar sections, **RIGHT** sides together. Stitch, leaving notched edge open. Trim corners and seam allowances.



**13.** Turn. Press. Baste raw edges together.

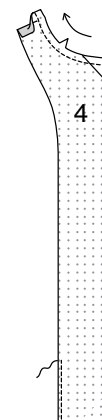


**14.** Pin collar to neck edge, with collar facing up, matching center backs, notches, large dots, and small dots to shoulder seams, clipping garment to staystitching, as needed. Baste, keeping pressed edge of collar free.



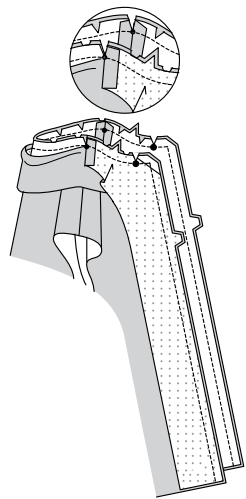
**15.** **STAYSTITCH** neck edge of **FRONT FACING (4)** in direction of arrows. **FINISH** inner edge of facing.

Turn in 5/8" (1.5cm) seam allowances on shoulder edge.

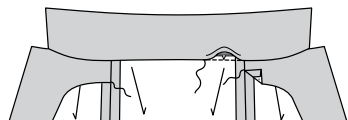


**16.** Pin facing to front opening and neck edges, matching notches and large dots, clipping facing to staystitching, as needed. Stitch, keeping pressed edge of collar free. Clip to large dots.

Clip neck edges of collar seam allowances at ends of facing, as shown. Trim corners and seam allowances. Press seam allowances toward collar between clips.

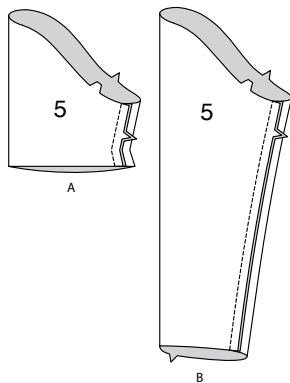


**17.** Turn facing to inside. Press. **SLIPSTITCH** pressed edge of collar over neck seam. **SLIPSTITCH** pressed edge of facing over shoulder seam.



### SLEEVES

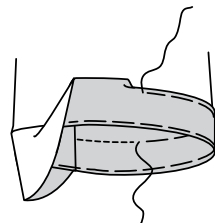
**18.** Stitch seam in SLEEVE (5).



### View A

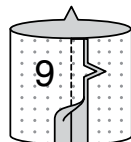
**19.** Turn up sleeve hem. Baste close to fold. Turn in 1/4" (6mm) on raw edge. Baste hem in place close to upper edge. Press.

**TOPSTITCH** hem along upper basting.

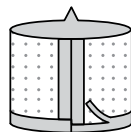


### VIEW B

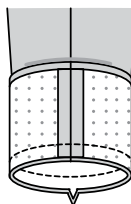
**20.** Stitch ends of SLEEVE BAND (9) together.



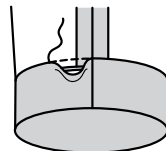
**21.** Turn in seam allowance on unnotched edge of band. Press. Trim pressed seam allowance to 3/8" (1cm).



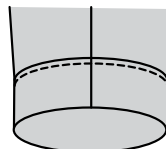
**22.** With **RIGHT** sides together, pin band to sleeve matching notches and seams. Stitch. Trim.



**23.** Turn band to inside along foldline. **SLIPSTITCH** pressed edge over seam.

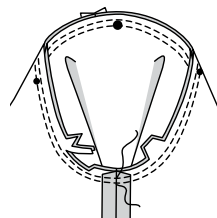


**24.** **EDGE**STITCH band close to seam.



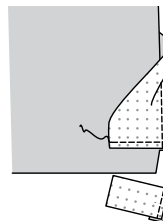
### VIEWS A AND B

**25.** With right sides together, pin sleeve into armhole with center small dot at shoulder dot on back, matching underarm seams, notches and remaining small dots. Baste. Stitch. Stitch again 1/4" (6mm) away in seam allowance. Trim close to stitching.

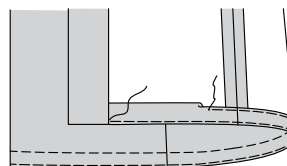


### FINISHING

**26.** Turn lower edge of facing to outside along seam. Stitch across facing 1-1/4" (3.2cm) above raw edge, along hemline. Trim, as shown.

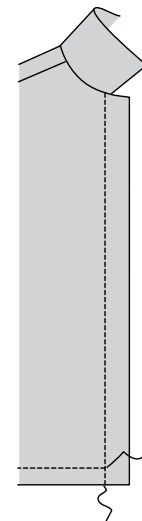


**27.** Turn facing to inside, turning up 1-1/4" (3.2cm) hem. Baste close to fold. Trim hem to an even width. Turn in 1/4" (6mm) on raw edge. Press. Baste hem in place close to upper edge. Press. Sew facing to hem.



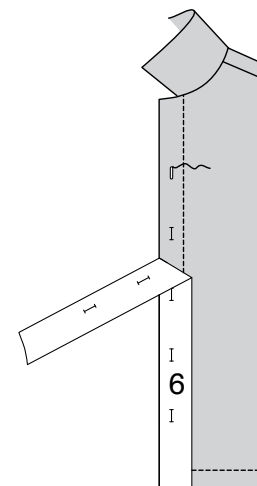
**28.** **TOPSTITCH** front opening edges along stitching lines.

**TOPSTITCH** hem along upper basting stopping at stitching line.



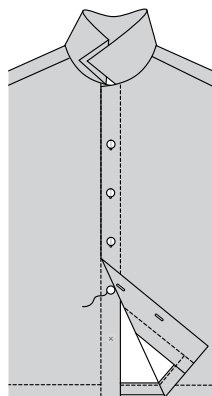
**29.** Place **GUIDE FOR BUTTONHOLES** (6) on **LEFT** front, having edges of tissue even with finished edges of garment, as shown. Transfer markings.

Make buttonholes at markings.



**30.** Lap opening edges, matching centers. Using buttonholes as guides, make button markings on RIGHT front.

Sew buttons at markings.



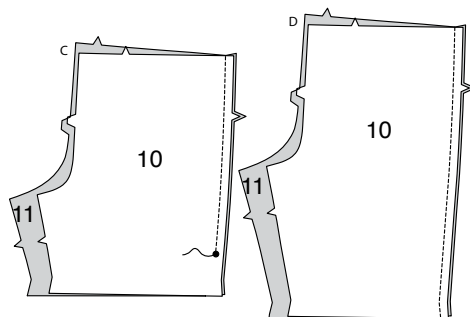
### SHORTS C, D

**NOTE:** The first view mentioned will be shown, unless otherwise indicated.

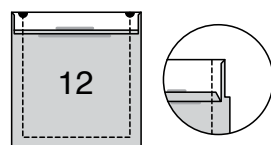
#### FRONT AND BACK

**1. View C:** Stitch FRONT (10) to BACK (11) at sides above large dot.

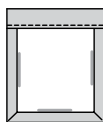
**View D:** Stitch FRONT (10) to BACK (11) at sides.



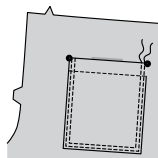
**2.** Turn in 1/4" (6mm) on upper edge of POCKET (12). Press. Turn upper edge to outside along foldline, forming a facing. Stitch along seamline on raw edges. Trim seam allowance in the facing area to 1/4" (6mm).



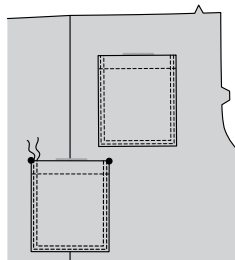
**3.** Turn corners right side out, turning facing to the wrong side. Press, pressing under raw edges along stitching, folding in corners diagonally. Stitch facing close to inner edge.



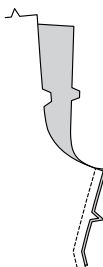
**4.** Pin pockets to backs matching large dots. **EDGESTITCH** and **TOPSTITCH** sides and lower edges.



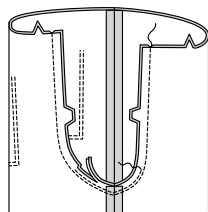
**5. View D:** Pin remaining pocket to LEFT front and back matching large dots. **EDGESTITCH** and **TOPSTITCH** sides and lower edges.



**6.** Stitch front to back at inner leg seam, matching notches.

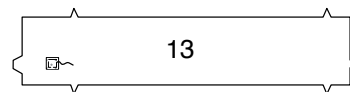


**7.** For crotch seam, turn one shorts leg right side out; slip inside remaining shorts leg. Stitch. Stitch curved area again, 1/4" (6mm) away in seam allowance. Trim close to second stitching.

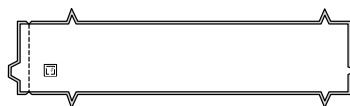


### CASING

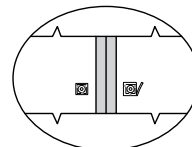
**8.** To reinforce eyelet area on CASING (13), cut two 3/4" (2cm) square remnants of self-fabric or interfacing. On **WRONG** side, center reinforcement remnant over small circles. Baste in place.



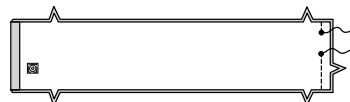
**9.** Stitch center front seam in casing matching double notches.



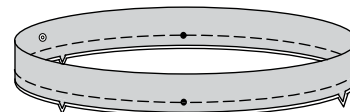
**10.** Apply eyelets to casing, centering over each small dot, following manufacturer's instructions. Trim reinforcement remnant close to eyelet.



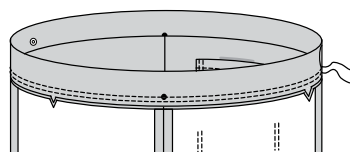
**11.** Stitch center back seam of casing, leaving open between small circles.



**12.** Fold casing, **WRONG** sides together along foldline. Baste raw edges.

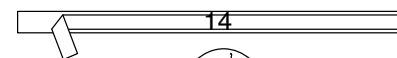


**13.** Pin casing to upper edge of shorts, matching centers, notches, and small dots to side seams. Stitch in a **DOUBLE STITCHED** seam. Press seam toward pants.



**14.** Cut one piece of elastic using GUIDE FOR ELASTIC (14).

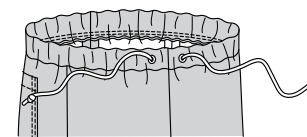
Insert elastic through opening in casing, as shown. Lap ends; hold with safety pin. Try on and adjust, if necessary. Stitch ends of elastic together securely.



**15.** **SLIPSTITCH** openings in casing.



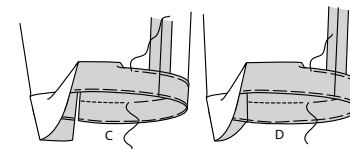
**16.** Insert purchased drawstring or cord through eyelets, having ends extending evenly. Trim length, if necessary. Knot ends.



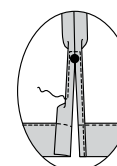
### FINISHING

**17.** Turn up 1-1/4" (3.2cm) hem on lower edge of shorts. Baste close to fold. Turn under 1/4" (6mm) on raw edge. Baste hem in place close to upper.

**TOPSTITCH** hem along upper basting.



**18. View C:** Make a 5/8" (1.5cm) **NARROW HEM** at side opening edges, tapering to nothing above large dot. Pivot across seam allowance 1/4" (6mm) above large dot when stitching.





# Congrats!

You've completed your sewing adventure

---

## SHARE YOUR LOOK



Post your pattern and tag us  
[@simplicity\\_creative\\_group](#) and [#simplicitypatterns](#)  
for a chance to be featured on our social media.

Look for more PDF patterns at [simplicity.com](https://www.simplicity.com)

Have a question or need help with your sewing project call us at  
1-800-782-0323

**McCall's**  
by **design**<sub>group</sub>

McCall's ©2024 a division of IG Design Group Americas Inc. • Atlanta, GA 30342 USA [www.thedesigngroup.com](http://www.thedesigngroup.com) • All Rights Reserved. [www.mccall.com](http://www.mccall.com) • Made in the U.S.A. Fabriqué aux États-Unis.  
To be used for individual private home use only and not for commercial or manufacturing purposes. • A usage privé seulement et non à des fins commerciales ou de production en série. • Para uso privado solamente, no se puede utilizar con propósitos de comercialización o de producción en serie.