

McCall's

M/8484



Designed and printed in USA

Average

MISSES' PAJAMAS

Suggested Fabrics: Challis, Charmeuse, Crepes, Lawn. **Interfacing:** Lightweight Fusible.

Notions: **A,B:** Five 5/8" (1.5cm) buttons, 5 7/8 yds. (5.3m) of 1/2" (1.3cm) piping. **C,D:** 1 3/8 yds. (1.3m) of 1" (2.5cm) elastic, 1/2" (1.3cm) piping: 2 yds. (1.8m) for **C**, 1 1/2 yds. (1.3m) for **D**, 1" (2.5cm) ribbon: 1 1/4 yds. (1.1m) for **C**, 2 7/8 yds. (2.6m) for **D**.

Sizes	XS	S	M	L	XL	XXL	
	(4-6)	(8-10)	(12-14)	(16-18)	(20-22)	(24-26)	
European	30-32	34-36	38-40	42-44	46-48	50-52	

BODY MEASUREMENTS: Select pattern size based on body measurements

Bust	29 1/2-30 1/2	31 1/2-32 1/2	34-36	38-40	42-44	46-48	Ins.
Waist	22-23	24-25	26 1/2-28	30-32	34-37	39-41 1/2	"
Hip-9" below waist	31 1/2-32 1/2	33 1/2-34 1/2	36-38	40-42	44-46	48-50	"
Back-neck to waist	15 1/4-15 1/2	15 3/4-16	16 1/4-16 1/2	16 3/4-17	17 1/4-17 1/2	17 3/4-18	"

Top A	45**	2 3/8	2 1/2	2 3/8	2 3/8	2 3/8	2 3/8	Yds.
	60**	2	2	2	2 1/4	2 1/4	2 1/4	"

Interfacing A,B	20"	1	1	1	1	1 1/2	1 1/2	Yds.
Top B	45**	1 3/8	1 3/8	1 3/8	1 3/8	1 3/8	1 3/8	Yds.
	60**	1 1/8	1 1/8	1 3/8	1 3/8	1 1/2	1 1/2	"

Contrast (Front and Back Bands, Placket, Collar, Sleeve Bands)

45**	1 3/8	1 3/8	1 3/8	1 3/8	1 3/8	1 3/8	1 3/8	Yds.
60**	1 3/8	1 3/8	1 3/8	1 3/8	1 3/8	1 1/2	1 1/2	"

Shorts C (sits 1" below waist)

45**	1	1	1	1 1/2	1 1/2	1 1/2	Yds.
60**	3/4	7/8	7/8	1	1 1/8	1 1/8	"

Pants D (sits 1" below waist)

45**	2 3/8	2 3/8	2 3/8	2 3/8	2 3/8	2 3/8	Yds.
60**	1 3/8	1 3/8	1 1/2	1 3/8	1 3/8	2 3/8	"

Contrast (Front and Back Bands) - 45, 60 - 3/8 yd.**

NOTE: Please refer to the sewing instructions for **FINISHED GARMENT MEASUREMENTS**.

*with nap **without nap

Moins Facile

PYJAMAS POUR JEUNES FEMMES

Tissus Conseillés: Challis, Charmeuse, Crêpes, Linon. **Entoilage:** Thermocollant léger.

Mercerie: **A,B:** 5 boutons de 1.5cm, 5.3m de passepoil de 1.3cm. **C,D:** 1.3m d'élastique de 2.5cm, passepoil de 1.3cm: 1.8m pour **C**, 1.3m pour **D**, ruban de 2.5cm: 1.1m pour **C**, 2.6m pour **D**.

Tailles	TP/XS	P/S	M/M	G/L	TG/XL	TTG/XXL
Françaises	32-34	36-38	40-42	44-46	48-50	52-54
Européennes	30-32	34-36	38-40	42-44	46-48	50-52

MESURES DU CORPS: Choisissez la taille du patron basée sur les mesures du corps

Poitrine	75-77	80-83	87-92	97-102	107-112	117-122	cm
Taille	56-58	61-64	67-71	76-81	87-94	99-105	"

Hanches (23cm au-dessous de la taille)

	80-83	85-88	92-97	102-107	112-117	122-127	cm
Dos du cou à la taille	39-39.5	40-40.5	41.5-42	42.5-43	44-44.5	45-45.5	"

Haut A	115cm*	2.2	2.3	2.4	2.4	2.5	2.6	m
	150cm*	1.8	1.8	1.8	1.8	2.1	2.2	"

Entoilage A,B	51cm	0.9	0.9	0.9	0.9	1.0	1.0	m
Haut B	115cm*	1.4	1.5	1.5	1.5	1.6	1.6	m
	150cm*	1.0	1.0	1.3	1.3	1.4	1.4	"

Contraste (Bandes de devant et dos, Patte, Col, Bandes de manches)

115cm*	1.6	1.6	1.7	1.7	1.7	1.7	m
150cm*	1.3	1.3	1.3	1.3	1.3	1.4	"

Short C (repose 2.5cm dessous de la taille)

115cm*	0.9	0.9	0.9	1.4	1.4	1.4	m
150cm*	0.7	0.7	0.8	0.9	1.0	1.0	"

Pantalon D (repose 2.5cm dessous de la taille)

115cm*	1.9	1.9	2.1	2.1	2.1	2.1	m
150cm*	1.0	1.0	1.4	1.6	1.7	1.9	"

Contraste (Bandes de devant et dos) - 115, 150cm* - 0.6m

NOTE: S'il vous plaît, reportez-vous aux instructions de couture pour les **MESURES DES VÊTEMENTS FINI**.

*avec sens **sans sens



A



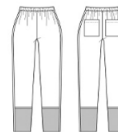
B



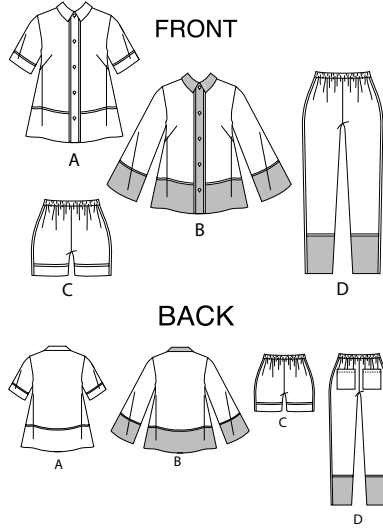
B



C



D



PATTERN MARKINGS

GRAINLINE: Place on straight grain of fabric, parallel to selvage or fold.

FOLDLINE: Place line on fold of fabric.

BUTTONHOLE MARKING: Indicates exact length and placement of buttonholes.

BUTTON MARKING: Indicates button placement.

NOTCHES AND SYMBOLS: For matching seams and construction details.

Indicates the Bustline, Waistline, Hip and/or Biceps. Measurements refer to circumference of Finished Garment (Body Measurement + Wearing Ease + Design Ease). Adjust pattern if necessary. The measurement excludes pleats, tucks, darts and seam allowances.

SEAM ALLOWANCE: 5/8" (1.5cm) included unless otherwise indicated, but not printed on tissue.

ADJUST IF NECESSARY

Lengthen or Shorten at adjustment lines (==) or where indicated on pattern. If substantial length is added, you may need to purchase additional fabric.

TO SHORTEN: Crease along adjustment line. Make a fold half the amount needed. Tape in place.

TO LENGTHEN: Slash between adjustment lines. Spread amount as needed, keeping edges parallel. Tape over paper.

When Alteration lines are not on tissue, lengthen or shorten at lower edge.

CUTTING AND MARKING

SHRINK FABRIC if not labeled pre-shrunk. Press.

CIRCLE LAYOUT for View, Size, Fabric Width.

Use **WITH NAP** layout for fabrics with one-way designs, nap, pile or surface shading. Because most knits have surface shading, a with nap layout is used.

For **DOUBLE THICKNESS (WITH FOLD)** - fold fabric with right sides together.

*** DOUBLE THICKNESS (WITHOUT FOLD)** - For fabrics with nap, fold fabric crosswise, right sides together. Mark as shown. Cut along crosswise fold of fabric (A). Turn upper layer 180° so arrows go in same direction and place over lower layer, right sides together (B).

For **SINGLE THICKNESS** - place fabric right side up. (For Fur Pile fabrics, place pile side down.)

★ Cut other pieces first, allowing enough fabric to cut this piece. Open fabric. For "Cut 1" pieces, cut piece once on single layer of fabric with piece face up on right side of fabric.

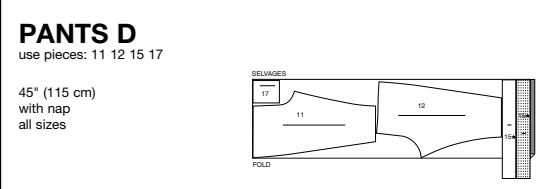
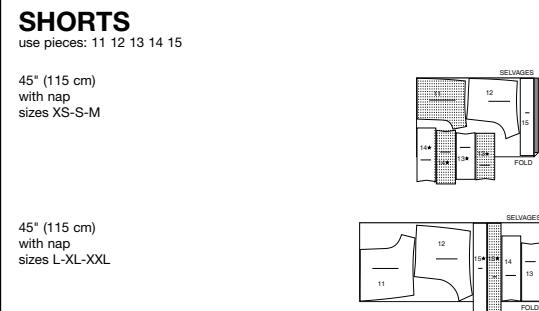
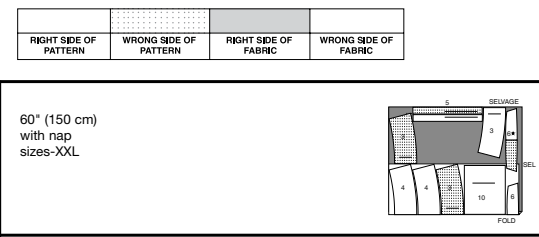
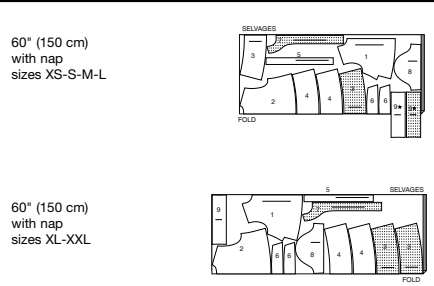
Pattern may have cutting lines for several sizes. Before **CUTTING** place all pieces on fabric according to layout. Pin. (**Layouts show approximate position of pattern pieces; position may vary according to your pattern size.**) Cut **ACCURATELY**, cutting notches outward.

Before removing pattern, **TRANSFER MARKINGS** and lines of construction to Wrong Side of fabric, using the Pin and Chalk Pencil method or Tracing Paper and Dressmaker Wheel. Markings needed on right side of fabric should be thread traced.

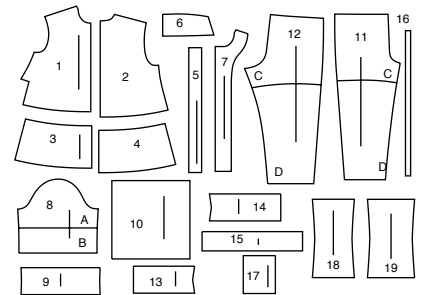
NOTE: Broken-line boxes (a| b| c|) in layouts represent pieces cut by measurements provided.

CUTTING LAYOUTS

Sizes	XS (4-6)	S (8-10)	M (12-14)	L (16-18)	XL (20-22)	XXL (24-26)
European	30-32	34-36	38-40	42-44	46-48	50-52
FINISHED GARMENT MEASUREMENTS (Includes Design and Wearing Ease)						
A, B Bust	40	42	45½	49½	53½	57½
C, D Hip	36½	38½	42	46	50	54
Width, lower edge						
Top A, B	55	57	60½	64½	68½	72½
Width, each leg						
Shorts C	22	22½	23	23½	24	24½
Pants D	12½	13	13½	14	14½	15
Finished back length from base of neck						
Top A, B	24	24½	25	25½	26	26½
Finished side length from waist						
Shorts C (sits 1" below waist)	15½	16	16½	17	17½	18
Pants D (sits 1" below waist)	39½	40	40½	41	41½	42

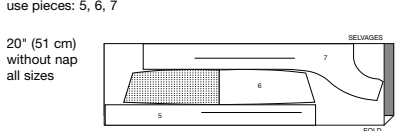


19 PATTERN PIECES

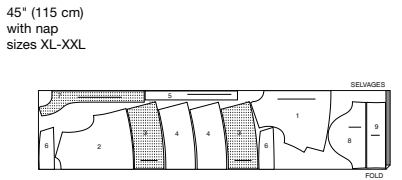
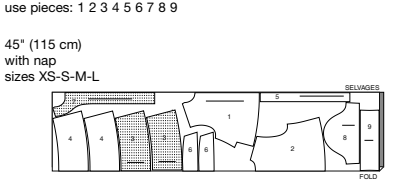


- 1 Front-A, B
- 2 Back-A, B
- 3 Front Band-A, B
- 4 Back Band-A, B
- 5 Placket-A, B
- 6 Collar-A, B
- 7 Front Facing-A, B
- 8 Sleeve-A, B
- 9 Sleeve Band-A
- 10 Sleeve Band-B
- 11 Front-C, D
- 12 Back-C, D
- 13 Front Band-C
- 14 Back Band-C
- 15 Casing-C, D
- 16 Guide for Elastic-C, D
- 17 Back Pocket-D
- 18 Front Band-D
- 19 Back Band-D

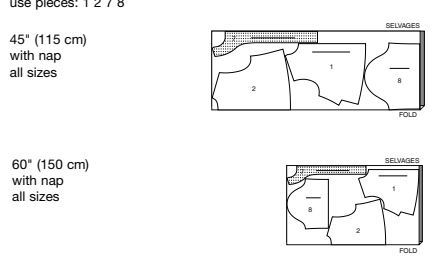
INTERFACING A, B



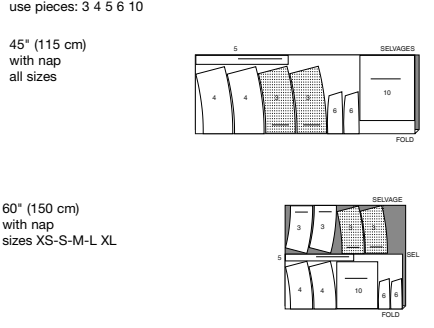
TOP A



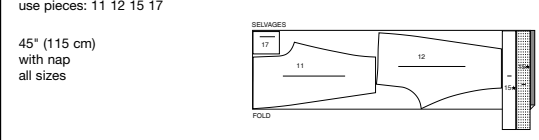
TOP B



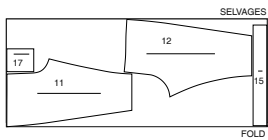
CONTRAST B PLACKET COLLAR AND HEM BANDS



PANTS D



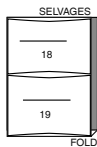
60" (150 cm) with nap all sizes



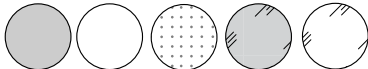
CONTRAST D LOWER BAND

use pieces: 18 19

45" to 60" (115 cm to 150 cm) with nap all sizes



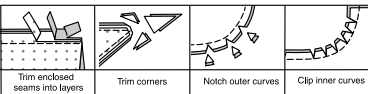
SEWING INFORMATION FABRIC KEY



Right Side Fabric Wrong Side Fabric Interfacing Right Side Lining Wrong Side Lining

SEAM ALLOWANCES

Use 1/4" (6mm) seam allowances unless otherwise indicated.



PIN AND FIT

Pin or baste seams, **RIGHT SIDE TOGETHER**, matching notches. Fit garment before stitching major seams.

PRESS

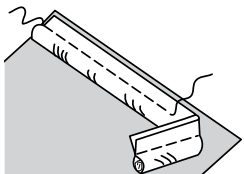
Press seam allowances flat; then open unless otherwise stated. Clip where necessary so they lie flat.

GENERAL DIRECTIONS FOR PIPING

APPLYING PIPING

Pin piping to project edges as instructed in Sewing Directions, having cord extend beyond seam line and flat/lip edge within seam allowance. Using an adjustable zipper foot, machine-baste as close to cord as possible without catching in cord.

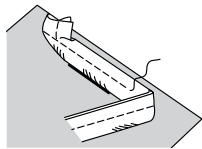
TIP - Open out fabric covering and trim cord from where it will cross seam line.



TAPERING ENDS

To Taper Ends, pin piping in place, as above, tapering end to nothing where seam lines cross. Machine-baste, as above.

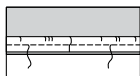
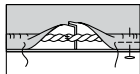
TIP - Open out fabric covering and trim cord from where it will cross seam line.



WHERE ENDS MEET

Rip open piping stitching at each end. Turn under one end of strip 3/8" (1cm), as shown. Lap raw end over folded end of fabric. Bring cord ends together, trimming cord, if necessary. Whip-stitch ends of cord together.

Stitch strip over cord. Baste remaining piping in place.



GLOSSARY

Sewing methods in **BOLD TYPE** have Sewing Tutorial Video available. Scan **QR CODE** to watch videos:

DART - see Darts: "sewing flat dart" video.

EASESTITCH /GATHER - see Gathering: "sewing two row gathers" video.

EDGESTITCH - see Machine Stitches: "how to edgestitch" video.

FINISH - see Seams: "how to finish seam allowances" video.

REINFORCE - see Machine Stitches: "how to reinforce" video.

SLIPSTITCH - Slide needle through a folded edge, then pick up a thread of underneath fabric.

STAYSTITCH - see Machine Stitches: "how to do staystitching" video.

TRIM - see How to Sew: Trim, Clip, and Layer Seams" video.

UNDERSTITCH - see Machine Stitches: "how to understitch" video.

PATTERN PIECES WILL BE IDENTIFIED BY NUMBERS THE FIRST TIME THEY ARE USED.

STITCH 5/8" (1.5CM) SEAMS WITH RIGHT SIDES TOGETHER UNLESS OTHERWISE STATED.

SEWING TUTORIALS



Build your skills viewing short, easy-to-follow videos at simplicity.com/sewingtutorials

TOP A, B

NOTE: Under each sub-heading, the first View mentioned will be illustrated, unless otherwise indicated.

FRONT AND BACK

1. STAYSTITCH neck edge of **FRONT** (1) sections in direction of arrows.

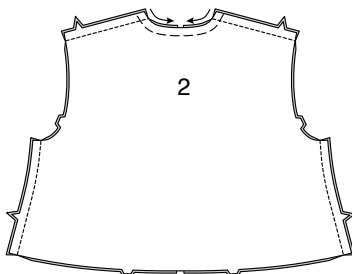
Make **DART**, matching small dots and stitching from wide end to point. Press dart down.

Staystitching will not be shown in the following illustrations.

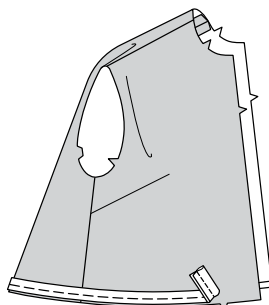


2. STAYSTITCH neck edge of **BACK** (2) in direction of arrows.

Stitch back to fronts at shoulder seams and sides.



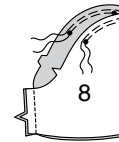
3. On outside, baste piping to lower edge of top, easing in fullness and clipping piping seam allowance along curves if necessary. See **GENERAL DIRECTIONS FOR PIPING**.



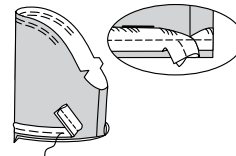
SLEEVE

4. EASESTITCH upper edge of **SLEEVE** (8) sections between outer small dots.

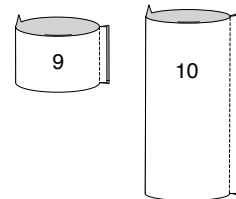
Stitch underarm seam.



5. On **OUTSIDE**, baste piping to lower raw edge of sleeve, tapering ends at underarm seam.



6. Stitch underarm seam of **SLEEVE BAND** (9 or 10).

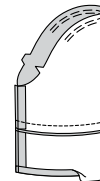


7. Press under 1/2" (1.3cm) on unnotched edge of band.

Pin band to lower edge of sleeve, right sides together, matching seams and notches. **TRIM** seam.

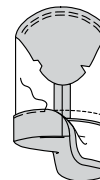
Stitch along seam line using an adjustable zipper foot.

Press band out, pressing seam toward band.

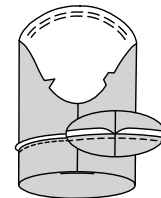


8. Turn band to inside along foldline, forming facing; press.

Pin pressed edge of facing 1/8" (3mm) over band seam; baste in place.

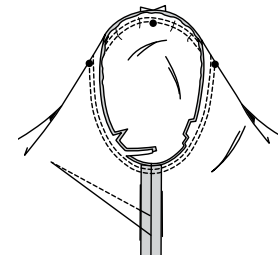


9. On outside, **EDGESTITCH** upper edge of band, catching in facing on inside.



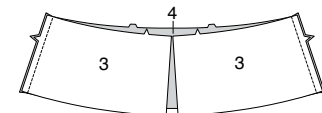
10. With right sides together, pin sleeve into armhole, placing center small dot at shoulder seam, matching underarm seams, notches and remaining small dots. Baste. Stitch.

Stitch again 1/4" (6mm) away in seam allowance. Trim close to stitching. Press seam allowances flat. Turn seam toward sleeve.

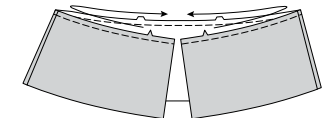


LOWER BAND

11. Stitch two **FRONT BAND** (3) sections to one **BACK BAND** (4) at sides, matching single notches. This is the band; the remaining sections will be used as band facings.



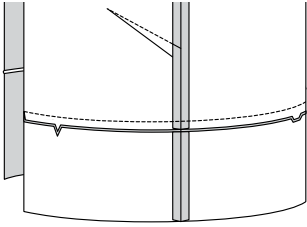
12. STAYSTITCH upper edge of band in direction of arrows.



13. With RIGHT sides together and raw edges even, pin band to lower edge of top, matching seams and notches.

Stitch along seam line using an adjustable zipper foot.

Press band out, pressing seam toward band.

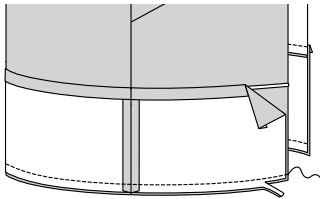


14. Stitch band facings together at sides same as for band; press under 1/2" (1.3cm) on unnotched edge.

Pin facing to band, right sides together, matching seams and centers back.

Stitch lower edge.

TRIM seam.



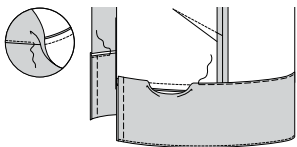
15. UNDERSTITCH band facing.

Turn facing to inside: press.

Pin pressed edge of facing 1/8" (1.5cm) over band seam; baste in place.

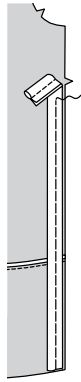
Baste front edges of facing and garment together.

On outside, **EDGE**STITCH upper edge of band, catching in facing on inside.

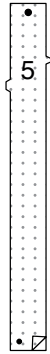


FRONT EDGES, PLACKET, AND FACING

16. On OUTSIDE, baste piping to front edges of top, having upper and lower raw edges even.

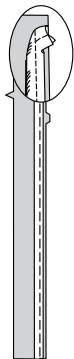


17. Apply fusible interfacing to WRONG side of each PLACKET (5) section, following manufacturer's directions.



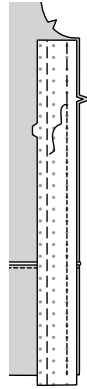
18. On OUTSIDE, baste piping to double-notched edge of placket, tapering upper edge at neck seam and having lower raw edges even.

Baste piping to remaining long edge.



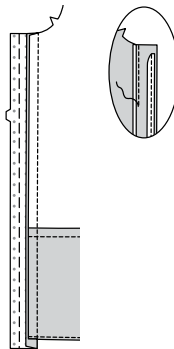
19. With RIGHT sides together and raw edges even, pin one placket to each front, matching single notches and having lower edge of placket extending 5/8" (1.5cm) beyond finished edge of band.

Stitch front edge along seam line using an adjustable zipper foot.



20. Press placket out, pressing seam toward placket.

EDGESTITCH inner edge of placket.

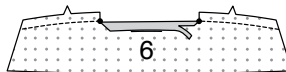


COLLAR

21. Apply interfacing to WRONG side of both COLLAR (6) sections.

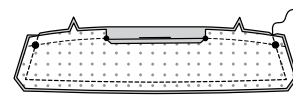
Machine-stitch 5/8" (1.5cm) from notched edge of collar. Clip notched edge of collar to stitching at small dots.

Press under 5/8" (1.5cm) on raw edge between clips; trim to 3/8" (1cm).



22. With RIGHT sides together, stitch facing to collar, leaving notched edges open.

TRIM seam and corners.



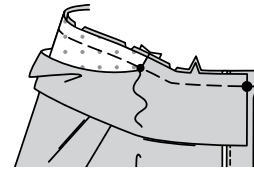
23. UNDERSTITCH facing as far as possible. Turn collar; press



24. Clip neck edge of top to stay-stitching.

On OUTSIDE, pin collar (facing side) to neck edge, matching centers back and large dots at centers front, placing small dots at shoulder seams.

Baste both collar and facing sections to front neck edge as far as small dot. Baste only the collar facing section to remaining neck edge between small dots.

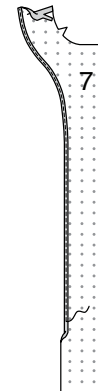


FACING

25. Apply interfacing to wrong side of FRONT FACING (7) sections.

FINISH long unnotched edge.

Press under 5/8" (1.5cm) on shoulder edges of facing; trim to 3/8" (1cm).



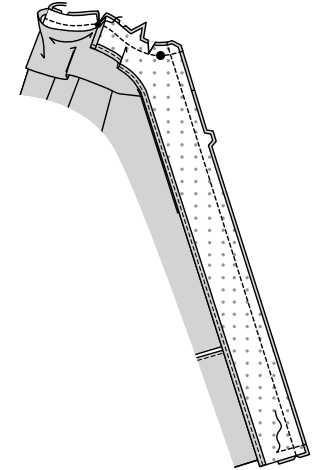
26. With RIGHT sides together, pin facing to front (over collar), matching large dots and placing pressed edges at small shoulder dots.

Stitch front and neck edges along seam lines, using an adjustable zipper foot on front edges.

Stitch lower edges to end of placket, being careful not to catch in front.

Clip neck edge through all thicknesses at small dots.

TRIM seam and corners; clip curves.

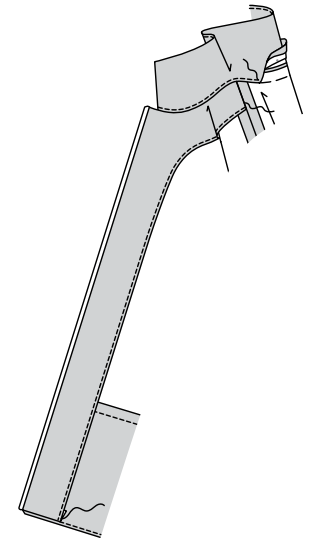


27. Turn facing to inside, turning back neck seam toward collar. Press.

Stitch pressed edge of collar over neck seam.

To keep facing in place, invisibly **SLIP**STITCH it to shoulder seam.

Turn under remaining seam allowance on lower edge of facing and **SLIP**STITCH to band.

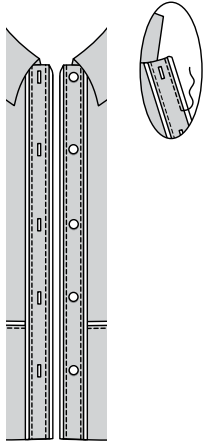


FINISHING

28. EDGESTITCH outer edge of placket.

Make buttonholes in RIGHT front placket at markings.

Lap opening edges, matching centers. Using buttonholes as guides, make button markings on left front. Sew buttons at markings.



SHORTS C OR PANTS D

NOTE: Under each sub-heading, the first View mentioned will be illustrated, unless otherwise indicated.

Shorts and pants are worn 1" (2.5cm) below waist.

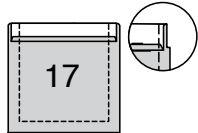
VIEW D BACK AND FRONT

1. Press under 1/4" (6mm) on upper edge of BACK POCKET (17).

Turn upper edge to OUTSIDE along fold line, forming facing.

Stitch along seam line on raw edges.

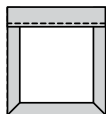
Trim seam allowance in the facing area to 1/4" (6mm).



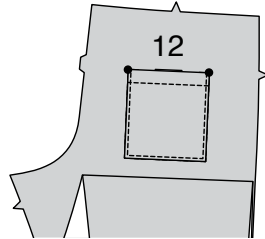
2. Turn corners RIGHT side out, turning facing to the WRONG side.

Press, pressing under raw edges along stitching.

EDGESTITCH inner edge of facing.

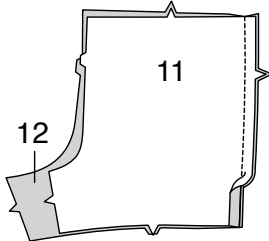


3. On OUTSIDE, pin pocket to BACK (12), placing upper corners at large dots. **EDGESTITCH** side and lower edges.

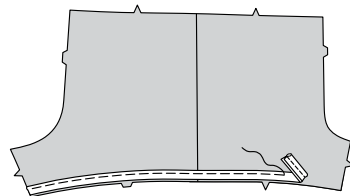


4. VIEW C, D- With RIGHT sides together, stitch FRONT (11) to BACK (12) at side seams.

Press seam allowance open.

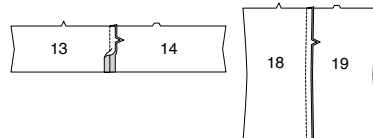


5. On OUTSIDE, baste piping to lower raw edge of shorts or pants, having raw edges even OR ends tapered - see **GENERAL DIRECTIONS FOR PIPING**.



6. Stitch FRONT BAND (13 of 18) to BACK BAND (14 or 19) at sides, matching single notches.

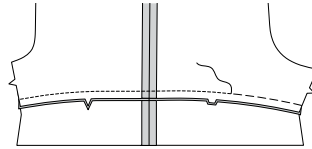
Press seam open.



7. Pin band to lower edge of shorts or pants, matching side seams and notches.

Stitch along seam line, using an adjustable zipper foot.

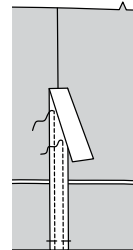
Press band out, pressing seam toward band.



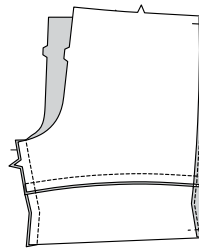
8. On outside, pin trim to garment, centering trim over side seam.

EDGESTITCH long edges of trim.

Baste raw edges together.



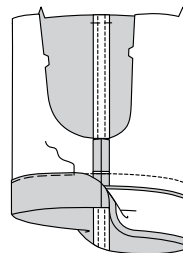
9. Stitch front to back at inner leg seam, matching band seams.



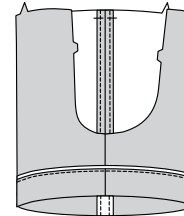
10. Press under 1/2" (1.3cm) on lower edge of band.

Turn band to inside along foldline, forming facing; press.

Pin pressed edge of facing 1/8" (3mm) over band seam, placing pin on outside.

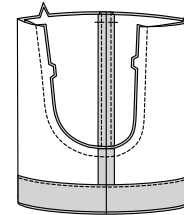


11. On outside, **EDGESTITCH** upper edge of band, catching in facing on inside.

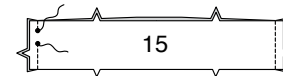


12. With RIGHT sides together, insert one leg INSIDE the other. Pin center seam, matching inner leg seams and notches. Stitch.

REINFORCE seam.

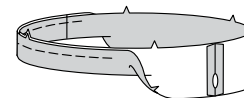


13. With RIGHT sides together, stitch seams of CASING (15) sections, leaving an opening in LEFT side seam between small dots, as shown.



14. Press seams open.

Fold casing in half, lengthwise, with WRONG sides together, having raw edges even. Baste raw edges together. The side with the opening is the underside of the casing.

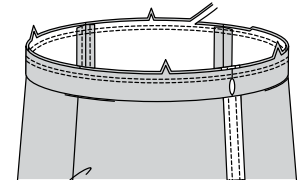


15. With the underside of casing facing you, pin casing to shorts/pants matching centers and side seams.

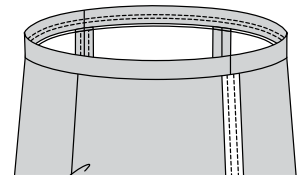
Stitch along seam line.

Stitch again 1/4" (6mm) from first stitching within seam allowance.

Trim close to second stitching.



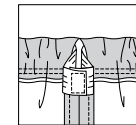
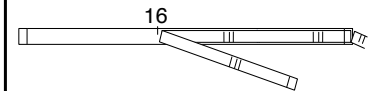
16. Press seam toward garment, pressing casing out.



17. Cut a piece of elastic the length of GUIDE FOR ELASTIC (16).

Insert elastic through opening in casing.

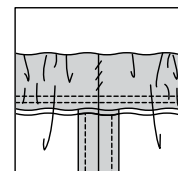
Overlap ends. Stitch securely together.



18. SLIPSTITCH opening edges of casing together.

Distribute fullness evenly.

TIP- To secure elastic so it won't twist in wearing, stitch through all thicknesses of casing in the groove of each seam.





Congrats!

You've completed your sewing adventure

**SHARE
YOUR** LOOK



Post your pattern and tag us
[@simplicity_creative_group](#) and [#simplicitypatterns](#)
for a chance to be featured on our social media.

Look for more PDF patterns at [simplicity.com](#)

Have a question or need help with your sewing project call us at
1-800-782-0323

McCall's
by **design**_{group}

McCall's ©2024 a division of IG Design Group Americas Inc. • Atlanta, GA 30342 USA [www.thedesigngroup.com](#) • All Rights Reserved. [www.mccall.com](#) • Made in the U.S.A. Fabriqué aux États-Unis.

To be used for individual private home use only and not for commercial or manufacturing purposes. • A usage privé seulement et non à des fins commerciales ou de production en série. • Para uso privado solamente, no se puede utilizar con propósitos de comercialización o de producción en serie.