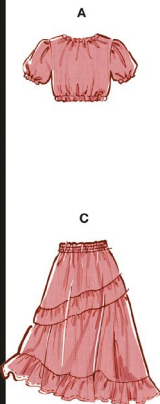


McCall's

M8482



Designed and printed in USA

Easy

MISSES' TOPS AND SKIRTS

Suggested Fabrics: Challis, Cotton Blends, Gauze, Lightweight Linen.

Notions: ½" (1.3cm) elastic: 2¼ yds. (2.6m) for A,B, 3½ yd. (2.9m) for C,D.

Sizes	4	6	8	10	12	14	16	18	20
European	30	32	34	36	38	40	42	44	46

BODY MEASUREMENTS: Select pattern size based on body measurements

Bust	29½	30½	31½	32½	34	36	38	40	42	Ins.
Waist	22	23	24	25	26½	28	30	32	34	"
Hip-9" below waist	31½	32½	33½	34½	36	38	40	42	44	"
Back-neck to waist	15¼	15½	15¾	16	16¼	16½	16¾	17	17¼	"

Top A (sits 2" above waist)

45"*	1½	1½	1½	1¾	1¾	1¾	1¾	1¾	1¾	Yds.
60"*	1	1	1	1	1	1	1¼	1¼	1¼	"

Top and Sash B (sits 2" above waist)

45"*	2½	2½	2½	2½	2½	2½	2½	2½	2½	Yds.
60"*	1¾	1¾	1¾	1¾	2	2	2	2	2½	"

Skirt C	45"*	3	3	3	3	3¼	3¼	3¼	3¾	Yds.
	60"*	2	2	2¼	2¼	2¼	2¼	2¾	2¾	"

Skirt D	45"*	4¾	4¾	4¾	5½	5½	5½	5½	5½	Yds.
	60"*	3½	3½	3½	3½	3½	4	4	4	"

FINISHED GARMENT MEASUREMENTS (Includes Design and Wearing Ease)

A,B Bust	45	46	47	48	49½	51½	53½	55½	57½	Ins.
C,D Hip	35	36	37	38	39½	41½	43½	45½	47½	"

Finished back length from base of neck

Top A, B (sits 2" above waist)	13¼	13½	13¾	14	14¼	14½	14¾	15	15¼	Ins.
---------------------------------------	-----	-----	-----	----	-----	-----	-----	----	-----	------

Finished back length from waist

Skirt C	32	32	32	32	32	32	32	32	32	Ins.
Skirt D	39	39	39	39	39	39	39	39	39	"

*with nap **without nap

Facile

HAUTS ET JUPES POUR JEUNES FEMMES

Tissus Conseillés: Challis, Cotonnades, Gaze, Toile de lin de poids léger.

Mercier: Élastique de 1.3cm: 2.6m pour A,B, 2.9m pour C,D.

Tailles	4	6	8	10	12	14	16	18	20
Françaises	32	34	36	38	40	42	44	46	48
Européen	30	32	34	36	38	40	42	44	46

MESURES DU CORPS: Choisissez la taille du patron basée sur les mesures du corps

Poitrine	75	78	80	83	87	92	97	102	107	cm
Taille	56	58	61	64	67	71	76	81	87	"
Hanches (23cm au-dessous de la taille)	80	83	85	88	92	97	102	107	112	cm
Dos du cou à la taille	39	39.5	40	40.5	41.5	42	42.5	43	44	"

Haut A (repose 5cm dessous de la taille)

115cm*	1.5	1.5	1.5	1.6	1.6	1.6	1.6	1.7	1.7	m
150cm*	0.8	0.9	0.9	0.9	0.9	0.9	1.0	1.1	1.1	"

Haut et ceinture-écharpe B (repose 5cm dessous de la taille)

115cm*	1.8	1.9	1.9	1.9	1.9	1.9	2.1	2.1	2.1	m
150cm*	1.5	1.6	1.7	1.7	1.7	1.8	1.8	1.8	1.8	"

Jupe C	115cm*	2.7	2.7	2.7	2.7	2.7	3.0	3.0	3.1	m
	150cm*	1.8	1.8	2.1	2.1	2.1	2.5	2.5	2.5	"

Jupe D	115cm*	4.3	4.3	4.3	4.7	4.7	4.7	4.7	4.7	m
	150cm*	3.2	3.2	3.2	3.2	3.2	3.7	3.7	3.7	"

MESURES DES VÊTEMENTS FINI (Motif et aisance de port compris)

A,B Poitrine	114	117	119	122	126	131	136	141	146	cm
C,D Hanches	89	91	94	97	100	105	110	116	121	"

Longueur finie – dos, votre nuque à l'ourlet

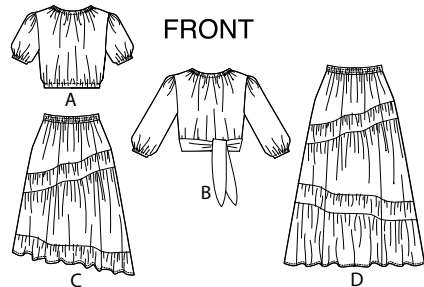
Haut A, B (repose 5cm dessous de la taille)	34	34	35	36	36	37	37	38	39	cm
--	----	----	----	----	----	----	----	----	----	----

Longueur finie – dos, taille à l'ourlet

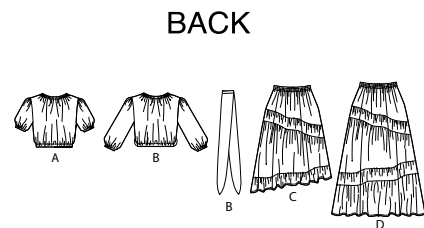
Jupe C	81	81	81	81	81	81	81	81	81	cm
Jupe D	99	99	99	99	99	99	99	99	99	"

*avec sens **sans sens



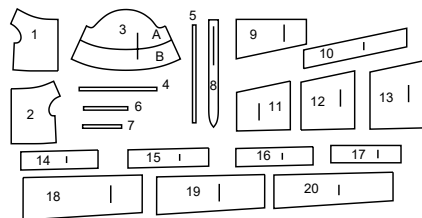


FRONT



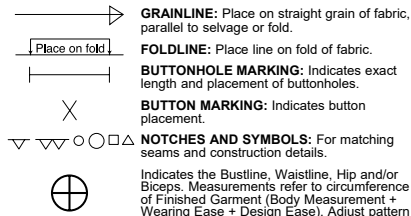
BACK

20 PATTERN PIECES



- 1 Front-A,B
- 2 Back-A,B
- 3 Sleeve-A,B
- 4 Elastic Guide for Neck-A,B
- 5 Elastic Guide for Lower Edge-A,B
- 6 Elastic Guide for Sleeve-A
- 7 Elastic Guide for Sleeve-B
- 8 Sash-B
- 9 Yoke Front and Back-C,D
- 10 Tier 1-C,D
- 11 Tier 2-C,D (Right)
- 12 Tier 2-C,D (Center)
- 13 Tier 2-C,D (Left)
- 14 Tier 3-C,D (Right)
- 15 Tier 3-C,D (Center)
- 16 Tier 3-C,D (Left)
- 17 Casings-C,D
- 18 Tier 4-D (Right)
- 19 Tier 4-D (Center)
- 20 Tier 4-D (Left)

PATTERN MARKINGS



GRAINLINE: Place on straight grain of fabric, parallel to selvage or fold.
FOLDLINE: Place line on fold of fabric.
BUTTONHOLE MARKING: Indicates exact length and placement of buttonholes.
BUTTON MARKING: Indicates button placement.
NOTCHES AND SYMBOLS: For matching seams and construction details.
 Indicates the Bustline, Waistline, Hip and/or Biceps. Measurements refer to circumference of Finished Garment (Body Measurement + Wearing Ease + Design Ease). Adjust pattern if necessary. The measurement excludes pleats, tucks, darts and seam allowances.
SEAM ALLOWANCE: 5/8" (1.5cm) included unless otherwise indicated, but not printed on tissue.

ADJUST IF NECESSARY

Lengthen or Shorten at adjustment lines (==) or where indicated on pattern. If substantial length is added, you may need to purchase additional fabric.
TO SHORTEN: Crease along adjustment line. Make a fold half the amount needed. Tape in place.
TO LENGTHEN: Slash between adjustment lines. Spread amount as needed, keeping edges parallel. Tape over paper.
 When Alteration lines are not on tissue, lengthen or shorten at lower edge.

CUTTING AND MARKING

SHRINK FABRIC if not labeled pre-shrunk. Press.
CIRCLE LAYOUT for View, Size, Fabric Width.
 Use **WITH NAP** layout for fabrics with one-way designs, nap, pile or surface shading. Because most knits have surface shading, a with nap layout is used.
 For **DOUBLE THICKNESS (WITH FOLD)** - fold fabric with right sides together.
*** DOUBLE THICKNESS (WITHOUT FOLD)** - For fabrics with nap, fold fabric crosswise, right sides together. Mark as shown. Cut along crosswise fold of fabric (A). Turn upper layer 180° so arrows go in same direction and place over lower layer, right sides together (B).
 For **SINGLE THICKNESS** - place fabric right side up. (For Fur Pile fabrics, place pile side down.)

★ Cut other pieces first, allowing enough fabric to cut this piece. Open fabric. For "Cut 1" pieces, cut piece once on single layer of fabric with piece face up on right side of fabric.
 Pattern may have cutting lines for several sizes. Select the proper cutting line or pattern pieces for your size.
 Before **CUTTING** place all pieces on fabric according to layout. Pin. (Layouts show approximate position of pattern pieces; position may vary according to your pattern size.) Cut **ACCURATELY**, cutting notches outward.
 Before removing pattern, **TRANSFER MARKINGS** and lines of construction to Wrong Side of fabric, using the Pin and Chalk Pencil method or Tracing Paper and Dressmaker Wheel. Markings needed on right side of fabric should be thread traced.
NOTE: Broken-line boxes (a! b! c!) in layouts represent pieces cut by measurements provided.

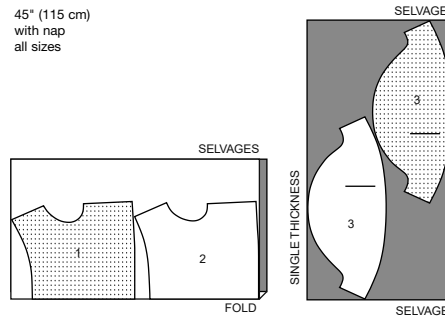
CUTTING LAYOUTS

RIGHT SIDE OF PATTERN	WRONG SIDE OF PATTERN	RIGHT SIDE OF FABRIC	WRONG SIDE OF FABRIC
-----------------------	-----------------------	----------------------	----------------------

TOP A

use pieces: 1 2 3

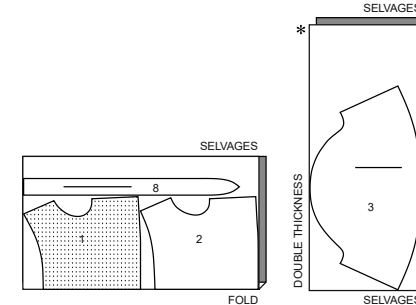
45" (115 cm) with nap all sizes



TOP AND SASH B

use pieces: 1 2 3 8

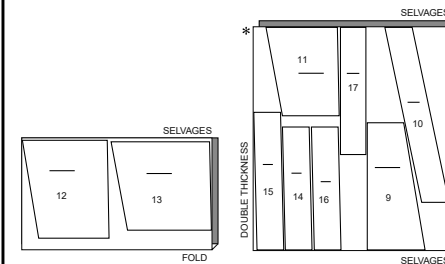
45" (115 cm) with nap all sizes



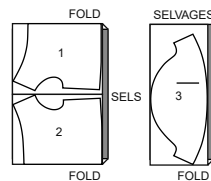
SKIRT C

use pieces: 9 10 11 12 13 14 15 16 17

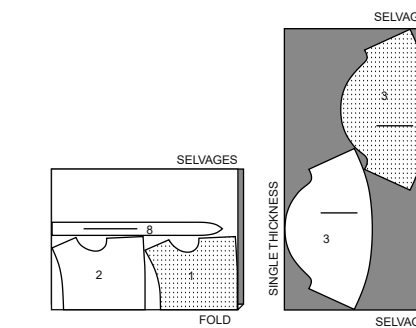
45" (115 cm) with nap all sizes



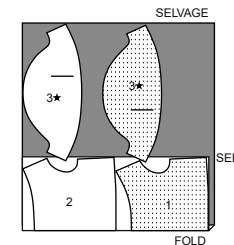
60" (150 cm) with nap sizes 4-6-8-10-12-14



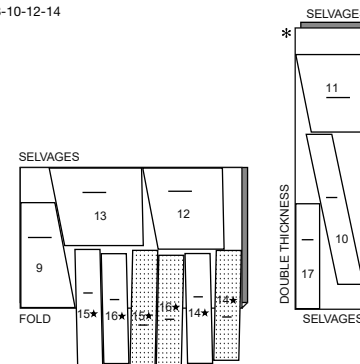
60" (150 cm) with nap all sizes



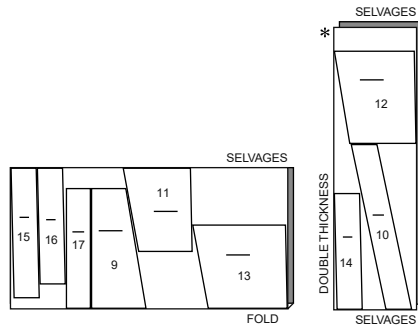
60" (150 cm) with nap sizes 16-18-20



60" (150 cm) with nap sizes 4-6-8-10-12-14



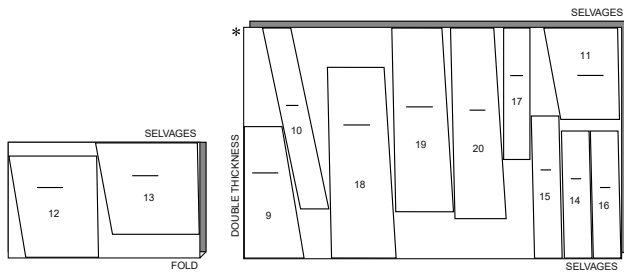
60" (150 cm)
with nap
sizes 16-18-20



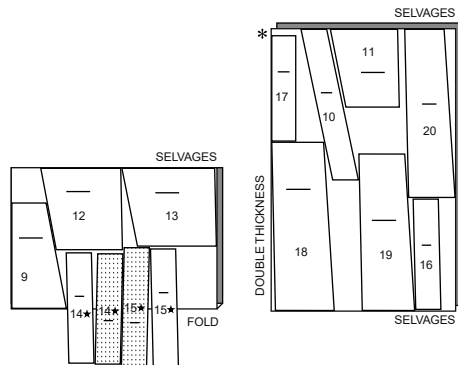
SKIRT D

use pieces: 9 10 11 12 13 14 15 16 17 18 19 20

45" (115 cm)
with nap
all sizes



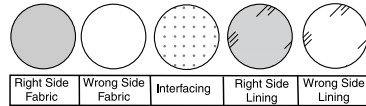
60" (150 cm)
with nap
sizes 4-6-8-10-12-14



60" (150 cm)
with nap
sizes 16-18-20

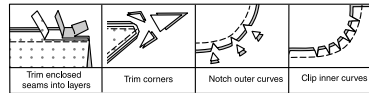


SEWING INFORMATION FABRIC KEY



SEAM ALLOWANCES

Use 5/8" (1.5cm) seam allowances unless otherwise indicated.



PIN AND FIT

Pin or baste seams, **RIGHT SIDE TOGETHER**, matching notches. Fit garment before stitching major seams.

PRESS

Press seam allowances flat; then open unless otherwise stated. Clip where necessary so they lie flat.

GLOSSARY

Sewing methods in **BOLD TYPE** have Sewing Tutorial Video available. Scan QR CODE to watch videos:

GATHER - see **Gathering: "sewing two row gathers"** video

NARROW HEM - see **Hems: "sewing narrow hems"** video

SLIPSTITCH - See **Hand Stitching: "how to slip stitch"** video.

SEWING TUTORIALS



Build your skills viewing short, easy-to-follow videos at simplicity.com/sewingtutorials

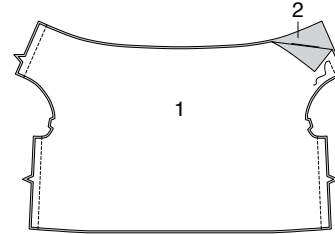
SEWING DIRECTIONS

TOP A, B

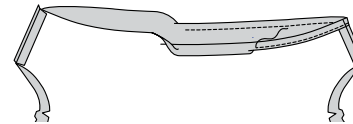
NOTE: Under each sub-heading, the first View will be illustrated, unless otherwise indicated.

FRONT, BACK AND SLEEVE

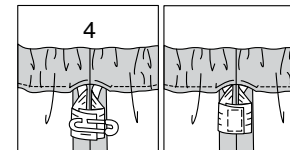
1. Stitch **FRONT** (1) to **BACK** (2) at shoulders and sides.



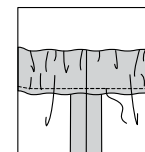
2. To make neck casing for elastic, turn in 7/8" (1cm) seam allowance on neck edge, turning in 1/4" (6mm) on raw edge; press. Stitch, as shown, leaving an opening.



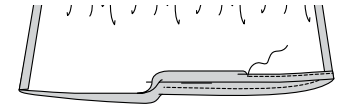
3. Cut one piece of elastic the length of **ELASTIC GUIDE FOR NECK** (4). Insert elastic through opening. Lap ends; hold with safety pin. Try on and adjust if necessary. Stitch ends of elastic securely.



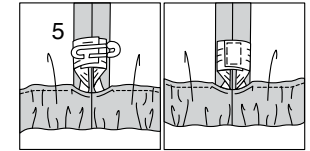
4. Stitch opening, stretching elastic while stitching.



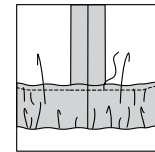
5. To make lower casing for elastic, turn in 7/8" (1cm) seam allowance on lower edge, turning in 1/4" (6mm) on raw edge; press. Stitch, as shown, leaving an opening.



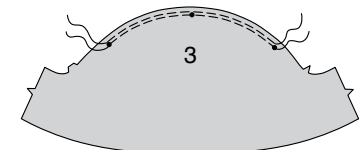
6. Cut one piece of elastic the length of **ELASTIC GUIDE FOR LOWER EDGE** (5). Insert elastic through opening. Lap ends; hold with safety pin. Try on and adjust if necessary. Stitch ends of elastic securely.



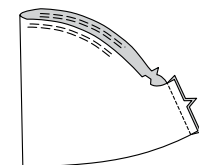
7. Stitch opening, stretching elastic while stitching.



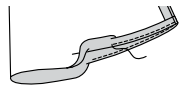
8. **GATHER** upper edge of **SLEEVE** (3) between outer small dots.



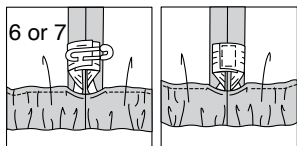
9. Stitch sleeve seam.



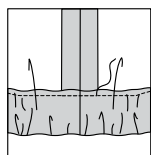
10. To make casing for elastic, turn in 7/8" (1cm) seam allowance on lower edge, turning in 1/4" (6mm) on raw edge; press. Stitch, as shown, leaving an opening.



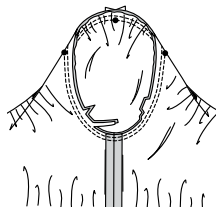
11. Cut elastic the length of ELASTIC GUIDE FOR SLEEVE (6) or (7). Insert elastic through opening. Lap ends; hold with safety pin. Try on and adjust if necessary. Stitch ends of elastic securely.



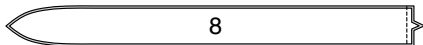
12. Stitch opening, stretching elastic while stitching.



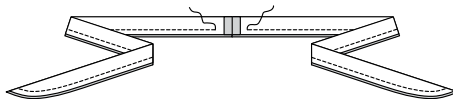
13. With right sides together, pin sleeve into armhole, placing center small dot at shoulder seam, matching remaining dots. Adjust gathers; baste. Stitch. Stitch again 1/4" (6mm) away in seam allowances. Trim close to second stitching. Turn seam toward sleeve.



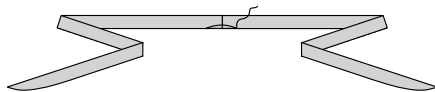
View B:
14. Stitch SASH (8) sections together at ends in a 3/8" (1cm) seam.



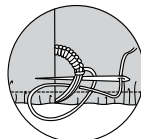
15. With right sides together, fold sash in half lengthwise, having raw edges even. Stitch in a 3/8" (1cm) seam, leaving an opening for turning.



16. Turn. Press. SLIPSTITCH opening.



17. Make thread loops at side seams, large enough for sash to pass through.

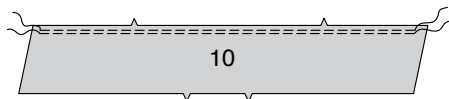


SKIRT C, D

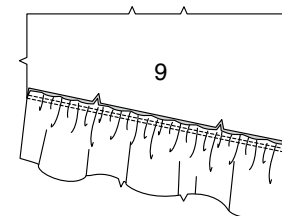
NOTE: Under each sub-heading, the first View will be illustrated, unless otherwise indicated.

FRONT AND BACK

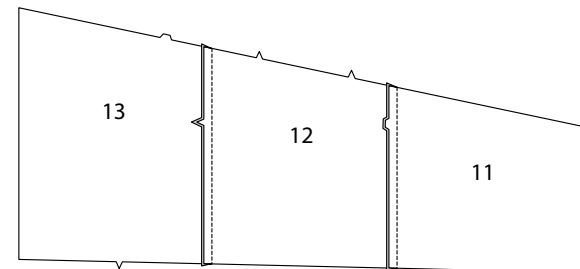
1. GATHER upper edge of one TIER 1 (10) between seamlines. NOTE: Remaining tier section will be used for back.



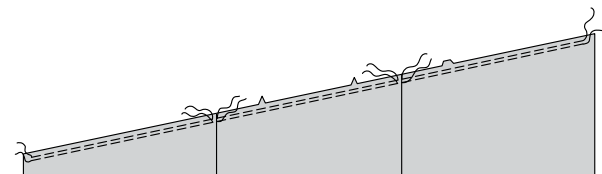
2. Pin tier to lower edge of one YOKE FRONT AND BACK (9) section, matching centers and notches. Adjust gathers. Baste. Stitch. Stitch again 1/4" (6mm) away in seam allowances. Press seam up. NOTE: Remaining yoke section will be used for back.



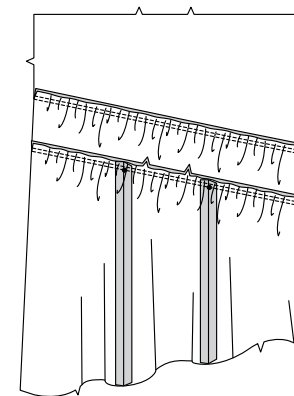
3. Stitch one TIER 2 (11), TIER 2 (12) and TIER 2 (13) section together, matching notches. NOTE: Remaining tier sections will be used for back.



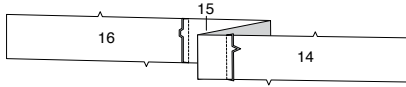
4. GATHER upper edge of tier 2 between seams and seamlines, as shown.



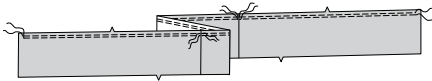
5. Pin tier to lower edge of front, matching centers and notches, placing seams at small dots. Adjust gathers. Baste. Stitch. Stitch again 1/4" (6mm) away in seam allowances. Press seam up.



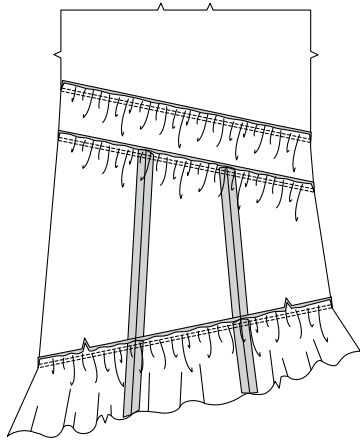
6. Stitch one TIER 3 (14), TIER 3 (15) and TIER 3 (16) section together, matching notches. **NOTE:** Remaining tier sections will be used for back.



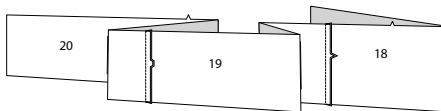
7. **GATHER** upper edge of tier 3 between seams and seamlines, as shown.



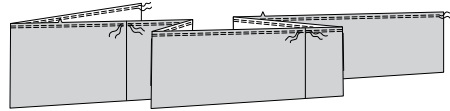
8. Pin tier to lower edge of front, matching centers, notches, and seams. Adjust gathers. Baste. Stitch. Stitch again 1/4" (6mm) away in seam allowances. Press seam up.



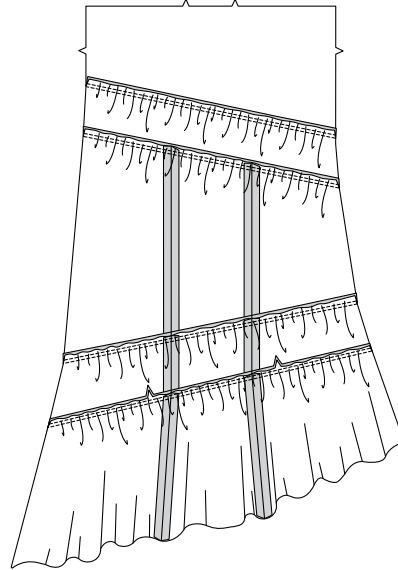
View D:
9. Stitch one TIER 4 (18), TIER 4 (19) and TIER 4 (20) section together, matching notches. **NOTE:** Remaining tier sections will be used for back.



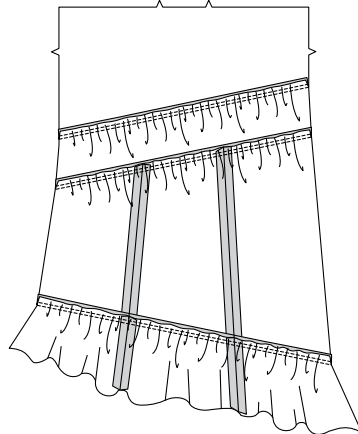
10. **GATHER** upper edge of tier 4 between seams and seamlines, as shown.



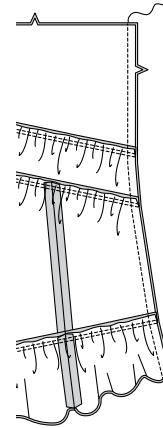
11. Pin tier to lower edge of front, matching centers, notches, and seams. Adjust gathers. Baste. Stitch. Stitch again 1/4" (6mm) away in seam allowances. Press seam up.



Views C, D:
12. Stitch back together in same manner as front.



13. Stitch front to back at sides.

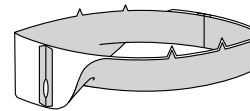


CASING AND FINISHING

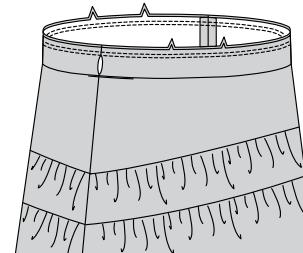
14. Stitch CASING (17) sections together at sides leaving open between small dots, as shown.



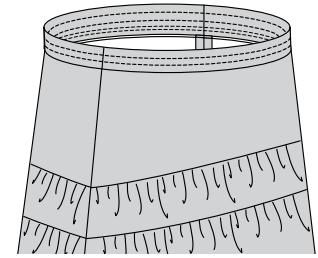
15. With wrong sides together, fold casing in half lengthwise. Press. Pin raw edges together.



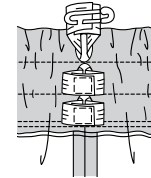
16. Pin casing to upper edge of skirt, matching centers and seams. Stitch. Stitch again 1/4" (6mm) away in seam allowance. Trim close to stitching. Press seam toward skirt.



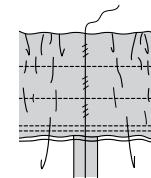
17. Stitch casing along stitching lines.



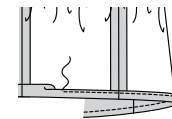
18. Cut three pieces of elastic the measurement of waist plus 1" (2.5cm). Insert elastic through openings. Lap ends; hold with safety pin. Try on; adjust if necessary. Stitch ends of elastic securely.



19. **SLIPSTITCH** opening edges together.



20. Make **NARROW HEM** at lower edge of skirt.





Congrats!

You've completed your sewing adventure

**SHARE
YOUR** LOOK



Post your pattern and tag us
[@simplicity_creative_group](#) and [#simplicitypatterns](#)
for a chance to be featured on our social media.

Look for more PDF patterns at [simplicity.com](https://www.simplicity.com)

Have a question or need help with your sewing project call us at
1-800-782-0323

McCall's
by **design**_{group}

McCall's ©2024 a division of IG Design Group Americas Inc. • Atlanta, GA 30342 USA www.thedesigngroup.com • All Rights Reserved. www.mccall.com • Made in the U.S.A. Fabriqué aux États-Unis.

To be used for individual private home use only and not for commercial or manufacturing purposes. • A usage privé seulement et non à des fins commerciales ou de production en série. • Para uso privado solamente, no se puede utilizar con propósitos de comercialización o de producción en serie.