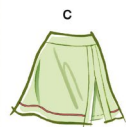


McCall's

M8481



Designed and printed in USA

Average

MISSES' KNIT TOPS AND SKORTS

Suggested Fabrics: Stretch Knits only such as Athletic Knits, Cotton Knit, Interlock, Jerseys. See Stretch Gauge. **Interfacing A,B:** Fusible Knit.

Notions: A,B: Three 3/8" (1cm) buttons. **Also for A:** 1 3/4 yds. (1.5m) of stretch piping. **Also for B:** 1 3/4 yds. (1.1m) of 1/2" (1.3cm) flexible trim. **C,D:** 1 3/4 yds. (1.3m) of 3/8" (1cm) elastic. **Also for C:** 2 yds. (1.9m) of stretch piping.

Sizes	8	10	12	14	16	18	20	22	24	26
European	34	36	38	40	42	44	46	48	50	52

BODY MEASUREMENTS: Select pattern size based on body measurements

Bust	31 1/2	32 1/2	34	36	38	40	42	44	46	48	Ins.
Waist	24	25	26 1/2	28	30	32	34	37	39	41	"
Hip-9" below waist	33 1/2	34 1/2	36	38	40	42	44	46	48	50	"
Back-neck to waist	15 3/4	16	16 1/4	16 1/2	16 3/4	17	17 1/4	17 1/2	17 3/4	18	"

Top A	60"*	7/8	7/8	1	1	1 1/4	1 1/4	1 1/4	1 1/4	1 3/8	1 3/8	Yds.
-------	------	-----	-----	---	---	-------	-------	-------	-------	-------	-------	------

Interfacing A,B	20"	3/8	3/8	3/8	3/4	3/4	3/4	3/4	3/4	3/4	3/4	Yd.
------------------------	-----	-----	-----	-----	-----	-----	-----	-----	-----	-----	-----	-----

Top B	60"*	7/8	7/8	7/8	1	1	1	1	1	1	Yd.
-------	------	-----	-----	-----	---	---	---	---	---	---	-----

Contrast 1 (Yoke Front and Back, Upper Sleeves)	60"*	3/8	3/8	3/8	3/8	1/2	1/2	1/2	1/2	1/2	1/2	Yd.
--	------	-----	-----	-----	-----	-----	-----	-----	-----	-----	-----	-----

Contrast 2 (Undersleeve Front and Back)	60"*	3/8	3/8	3/8	3/8	3/8	3/8	3/8	3/8	3/8	3/8	Yd.
--	------	-----	-----	-----	-----	-----	-----	-----	-----	-----	-----	-----

Skort C (sits 1" below waist)	60"*	1 1/2	1 1/2	1 1/2	1 1/2	1 1/2	1 3/4	2	2	2 1/2	Yds.
-------------------------------	------	-------	-------	-------	-------	-------	-------	---	---	-------	------

Skort D (sits 1" below waist)	60"*	1	1	1	1 1/4	1 1/2	1 1/2	1 1/2	1 3/4	1 3/4	1 3/4	Yds.
--------------------------------------	------	---	---	---	-------	-------	-------	-------	-------	-------	-------	------

Contrast (Bands, Yoke Front and Back)	60"*	3/4	3/4	3/4	3/4	3/4	3/4	3/4	3/4	3/4	3/4	Yd.
--	------	-----	-----	-----	-----	-----	-----	-----	-----	-----	-----	-----

NOTE: Please refer to the sewing instructions for **FINISHED GARMENT MEASUREMENTS**.

*with nap **without nap

Moins Facile

HAUTS ET JUPES-SHORTS EN TRICOT POUR JEUNES FEMMES

Tissus Conseillés: Tricot extensibles seulement tels que Mailles de Sport, Tricot de coton, Interlock, Jerseys. Reportez-vous au taux d'élasticité. **Entoilage A,B:** Tricot thermocollant.

Mercerie: A,B: 3 boutons de 1cm. **Aussi pour A:** 1.5m de passepoil extensible. **Aussi pour B:** 1.1m de garniture souple de 1.3cm. **C,D:** 1.3m d'élastique de 1cm. **Aussi pour C:** 1.9m de passepoil extensible.

Tailles	8	10	12	14	16	18	20	22	24	26
Françaises	36	38	40	42	44	46	48	50	52	54
Européen	34	36	38	40	42	44	46	48	50	52

MESURES DU CORPS: Choisissez la taille du patron basée sur les mesures du corps

Poitrine	80	83	87	92	97	102	107	112	117	122	cm
Taille	61	64	67	71	76	81	87	94	99	104	"

Hanches (23cm au-dessous de la taille)	85	88	92	97	102	107	112	117	122	127	cm
---	----	----	----	----	-----	-----	-----	-----	-----	-----	----

Dos du cou à la taille	40	40.5	41.5	42	42.5	43	44	44.5	45	46	"
-------------------------------	----	------	------	----	------	----	----	------	----	----	---

Haut A	150cm*	0.8	0.8	0.9	0.9	1.1	1.1	1.1	1.1	1.3	m
---------------	--------	-----	-----	-----	-----	-----	-----	-----	-----	-----	---

Entoilage A,B	51cm	0.6	0.6	0.6	0.7	0.7	0.7	0.7	0.7	0.7	m
----------------------	------	-----	-----	-----	-----	-----	-----	-----	-----	-----	---

Haut B	150cm*	0.8	0.8	0.8	0.8	0.8	0.8	0.9	0.9	0.9	m
---------------	--------	-----	-----	-----	-----	-----	-----	-----	-----	-----	---

Contraste 1 (Empiècement devant et dos, Manches supérieur)	150cm*	0.3	0.3	0.3	0.3	0.3	0.3	0.5	0.5	0.5	m
---	--------	-----	-----	-----	-----	-----	-----	-----	-----	-----	---

Contraste 2 (Sous le manche devant et dos)	150cm*	0.3	0.3	0.3	0.3	0.3	0.3	0.3	0.3	0.3	m
---	--------	-----	-----	-----	-----	-----	-----	-----	-----	-----	---

Jupe-short C (repose 2.5cm dessous de la taille)	150cm*	1.4	1.4	1.5	1.5	1.5	1.5	1.6	1.8	1.8	1.9	m
---	--------	-----	-----	-----	-----	-----	-----	-----	-----	-----	-----	---

Jupe-short D (repose 2.5cm dessous de la taille)	150cm*	0.9	0.9	0.9	0.9	1.4	1.4	1.4	1.5	1.5	m
---	--------	-----	-----	-----	-----	-----	-----	-----	-----	-----	---

Contrastes (Bandes, Empiècement devant et dos)	150cm*	0.7	0.7	0.7	0.7	0.7	0.7	0.7	0.7	0.7	m
---	--------	-----	-----	-----	-----	-----	-----	-----	-----	-----	---

NOTE: S'il vous plaît, reportez-vous au instructions de couture pour les **MESURES DES VÊTEMENTS FINI**.

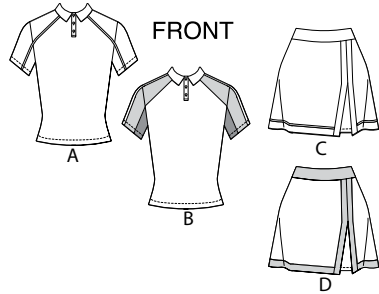
*avec sens **sans sens



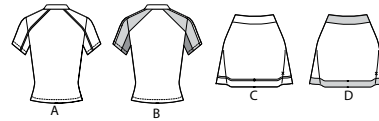
Use the 1 inch (2.54cm) box to ensure you are using rule at 100%
 Utilisez la boîte de 2.54 cm pour vous assurer d'utiliser la règle à 100%.
 Utilizar un cuadrado de 2.54 cm para asegurarse de estar usando la regla al 100%.



*When using the Pick-A-Knit® rule to measure your fabrics stretch capacity, rule must be viewed or printed at 100%.
 Quand vous utilisez le taux d'élasticité pour mesurer la capacité d'élasticité des tissus, le taux doit être visible ou imprimé à 100%.
 Al utilizar el calibre de elasticidad para medir la capacidad de elasticidad de las telas, el calibre debe estar visible o impreso al 100%.*

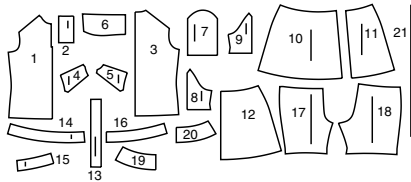


FRONT



BACK

21 PATTERN PIECES



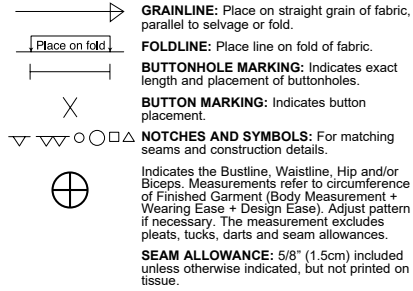
- 1 Front-A,B
- 2 Placket-A,B
- 3 Back-A,B
- 4 Yoke Front-A,B
- 5 Yoke Back-A,B
- 6 Collar-A,B
- 7 Upper Sleeve-A,B
- 8 Under Sleeve Front-A,B
- 9 Under Sleeve Back-A,B
- 10 Right Front-C,D
- 11 Left Front-C,D
- 12 Back-C,D
- 13 Front Band-C,D
- 14 Right Front Band-C,D
- 15 Left Front Band-C,D
- 16 Back Band-C,D
- 17 Shorts Front-C,D
- 18 Shorts Back-C,D
- 19 Yoke Front-C,D
- 20 Yoke Back-C,D
- 21 Guide for Elastic-C,D

Sizes	8	10	12	14	16	18	20	22	24	26
European	34	36	38	40	42	44	46	48	50	52

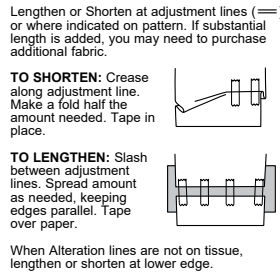
FINISHED GARMENT MEASUREMENTS (Includes Design and Wearing Ease)

A,B Bust	34	35	36½	38½	40½	42½	44½	46½	48½	50½	Ins.
A,B Waist	32	33	34½	36½	38½	40½	42½	44½	46½	48½	"
C,D Hip (Skirt)	39½	40½	42	44	46	48	50	52	54	56	"
C,D Hip (Shorts)	34	35	36½	38½	40½	42½	44½	46½	48½	50½	"
Width, lower edge											
Top A,B	34	35	36½	38½	40½	42½	44½	46½	48½	50½	Ins.
Skort C,D (Skirt)	49	50	51½	53½	55½	57½	59½	61½	63½	65½	"
Width, each leg											
Skort C,D (Shorts)	16½	17	18	19¼	20¼	21¼	23	24¼	25½	26¾	Ins.
Finished back length from base of neck											
Top A,B	20½	20½	20¼	21	21¼	21½	21¾	22	22¼	22½	Ins.
Finished back length from waist											
Skort C,D (Skirt - sits 1" below waist)	16¼	16½	16½	17	17¼	17½	17¾	18	18¼	18½	Ins.
Finished side length from waist											
Skort C,D (Shorts - sits 1" below waist)	13¼	13½	13¾	14	14¼	14½	14¾	15	15¼	15½	Ins.

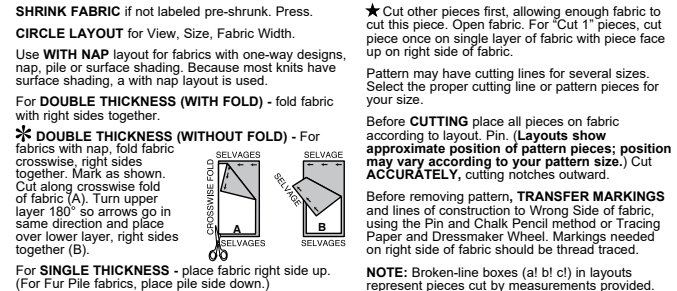
PATTERN MARKINGS



ADJUST IF NECESSARY



CUTTING AND MARKING



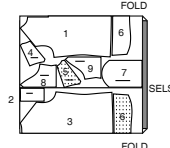
CUTTING LAYOUTS

RIGHT SIDE OF PATTERN	WRONG SIDE OF PATTERN	RIGHT SIDE OF FABRIC	WRONG SIDE OF FABRIC
-----------------------	-----------------------	----------------------	----------------------

TOP A

use pieces: 1 2 3 4 5 6 7 8 9

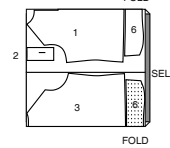
60" (150 cm)
with nap
sizes 8 10 12 14



TOP B

use pieces: 1 2 3 6

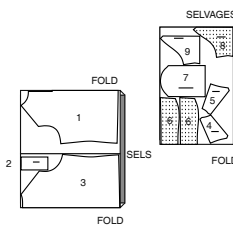
60" (150 cm)
with nap
all sizes



CONTRAST 1B (Yokes and Upper Sleeve)

use pieces: 4 5 7

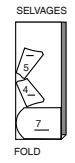
60" (150 cm)
with nap
all sizes



CONTRAST 2B (Under Sleeve)

use pieces: 8 9

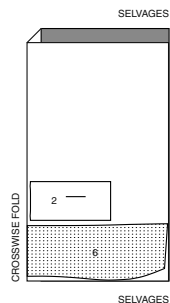
60" (150 cm)
with nap
all sizes



INTERFACING A, B

use pieces: 2 6

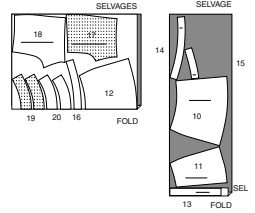
20" (51 cm)
without nap
all sizes



SKORT C

use pieces: 10 11 12 13 14 15 16 17 18 19 20

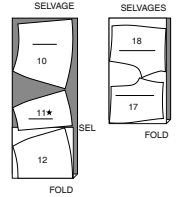
60" (150 cm)
with nap
sizes 8 10 12 14 16 18 20



SKORT D

use pieces: 10 11 12 17 18

60" (150 cm)
with nap
sizes 8 10 12 14



CONTRAST D (Yoke and Bands)

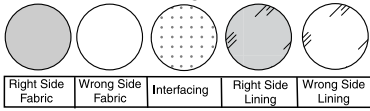
use pieces: 13 14 15 16 19 20

60" (150 cm)
with nap
all sizes



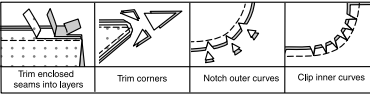
SEWING INFORMATION

FABRIC KEY



SEAM ALLOWANCES

Use 1/4" (6mm) seam allowances unless otherwise indicated.



PIN AND FIT

Pin or baste seams, **RIGHT SIDE TOGETHER**, matching notches. Fit garment before stitching major seams.

PRESS

Press seam allowances flat; then open unless otherwise stated. Clip where necessary so they lie flat.

GLOSSARY

Read **General Directions** on page 1 before you begin.→

Sewing methods in **BOLD TYPE** have Sewing Tutorial Video available. Scan **QR CODE** to watch videos:

EASE – see **Gathering**: "sewing two row gathers" video

EDGESTITCH – see **Machine Stitches**: "how to sew an edgestitch" video

STITCH IN THE DITCH – see **Machine Stitches**: "how to stitch in the ditch" video

TRIM SEAM – see **Seams**: "how to trim, clip and layer seams" video

UNDERSTITCH – see **Machine Stitches**: "how to understitch" video

PATTERN PIECES WILL BE IDENTIFIED BY NUMBERS THE FIRST TIME THEY ARE USED.

STITCH SEAMS WITH RIGHT SIDES TOGETHER UNLESS OTHERWISE STATED.

SEWING TUTORIALS



Build your skills viewing short, easy-to-follow videos at simplicity.com/sewingtutorials

SIMPLY THE BEST SEWING TECHNIQUES FOR KNITS

- Use a ball point or stretch needle.
- Narrow zigzag stitch or a stretch stitch.
- To prevent shoulder seams from stretching, pin center of hem tape, clear elastic or twill tape along seam line on front shoulder edges, then stitch the shoulder seams.

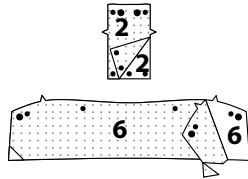
WITH OVERLOCK/SERGER

- The Overlock/Serger can be used alone or as a supplement to your conventional sewing machine.
- Overlock sewing machines stitch, trim and finish all in one operation. Therefore, it is **VERY** important to Check Fit before stitching seams.
- Using matching color thread, baste seams and try garment on. If no adjustments are needed, overlock seams along basting.
- The three thread overlock is ideal for major seams such as shoulder, side, underarm and sleeve seams.
- For stress areas such as crotch seams and armholes, the four thread overlock/safety stitch is best...OR, use a three thread overlock, and stitch along seam with a conventional machine to reinforce.
- The two or three thread overlock stitch is a perfect finish for edges of facings, hems and seam allowances.

TOP A, B

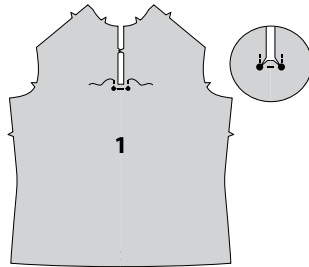
INTERFACING

1. Pin interfacing to wrong side of **PLACKET (2)** and **COLLAR (6)** sections. Fuse in place following manufacturer's directions.



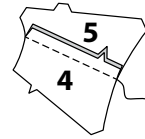
FRONT

2. To reinforce **FRONT (1)** at inner corners, stitch along stitching lines, squaring stitching at small dots. Clip inner corners to stitching at dots.

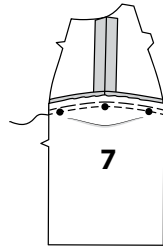


SHOULDER, SLEEVE, AND BACK

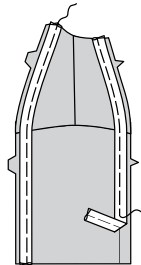
3. Pin **YOKE FRONT (4)** to **YOKE BACK (5)** at shoulder edges, matching notches. Stitch.



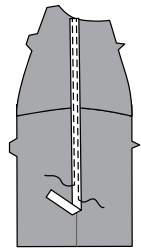
4. **EASE** upper edge of **SLEEVE (7)** between the small dots. With right sides together and raw edges even, pin sleeve to yoke at armhole edge, matching small dots, pulling up ease stitches to fit. Baste; stitch. Press seam toward yoke.



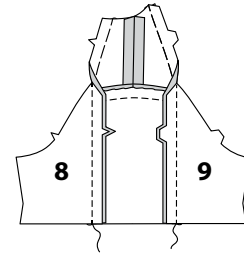
5. **FOR VIEW A** – Cut a piece of stretch piping the length of the front edge. On outside, pin piping to front edge from neck edge to lower edge of sleeve, having cord extend beyond seam line and flat edge within the seam allowance. Machine-baste as close to cord as possible without catching in the cord.
TIP: Use a zipper or cording foot when stitching piping. Apply piping to back edge in the same manner as front edge.



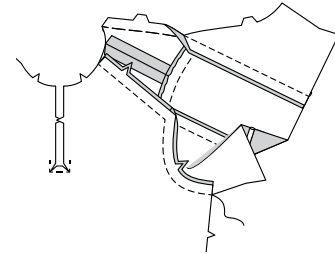
6. **FOR VIEW B** – Cut a piece of 3/8" (1cm) wide flexible trim the length of the shoulder edge. On outside, pin trim to yoke and sleeve, centered over shoulder seam and placement line from neck edge to lower edge of sleeve. **EDGESTITCH** trim in place.



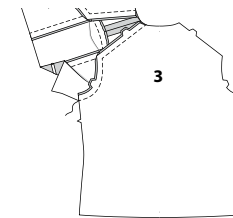
7. With right sides together and raw edges even, pin **UNDERSLEEVE FRONT (8)** and **UNDERSLEEVE BACK (9)** to sleeve, matching notches. Stitch, (using a zipper or cording foot for **View A**). Press seam toward sleeve.



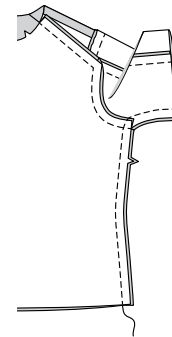
8. With right sides together and raw edges even, pin yoke front and sleeve to front at armhole edge, matching notches. Stitch. Press seam toward yoke and sleeve.



9. With right sides together and raw edges even, pin yoke back and sleeve to **BACK (3)** at armhole edge, matching notches. Stitch. Press seam toward yoke and sleeve.

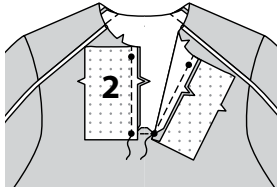


10. Stitch front to back at entire underarm seam, matching armhole seams.

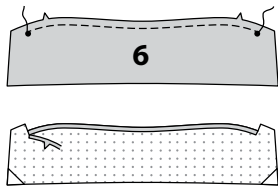


COLLAR AND PLACKET

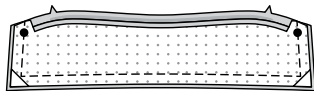
11. With right sides together and raw edges even, pin **PLACKET (2)** sections to front, matching small dots and notches. Stitch from neck edge to small dots in a 3/8" (1cm) seam, back-stitching at dots to reinforce the seam. Press seam toward placket, pressing placket out.



12. Machine-stitch 1/2" (1.3cm) from notched edge of **COLLAR (6)**. Clip notched edge of collar to stitching at outer small dots. Press under 1/2" (1.5cm) on raw edge between clips. Trim to 3/8" (1cm).

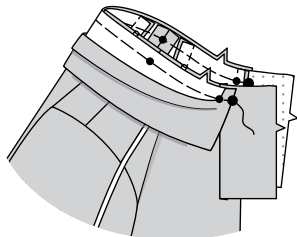


13. With right sides together, stitch facing to collar, leaving notched edge open.



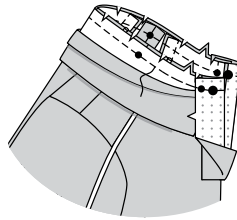
TRIM SEAM.

14. **UNDERSTITCH** the facing. Turn collar; press. On outside, pin collar (facing side) to neck edge, matching centers, small dots, large dots, and notches, placing inner small dot at shoulder seam. Baste both collar and facing sections to front neck edge as far as outer small dot. Baste only the collar facing section to remaining neck edge between small dots.



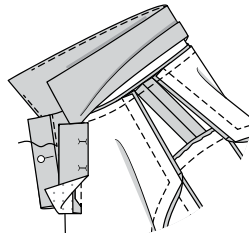
15. Turn placket to outside along fold line, forming facing; baste to neck edge.

Clip neck edge though all thicknesses at outer small dot. Stitch entire neck edge as basted, being careful not to catch in free edge of collar.

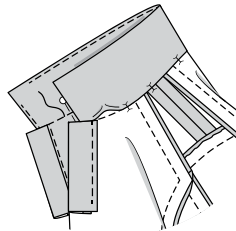


TRIM SEAM.

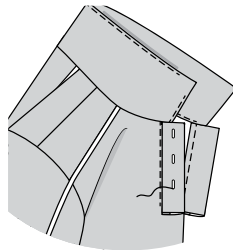
16. Turn placket facing to inside along foldline, turning back neck seam toward collar; press, pressing out corner of placket. Pin placket in place, placing pins on outside. On outside, **EDGESTITCH** front close to seam from neck edge to small dot, catching in placket facing on the inside.



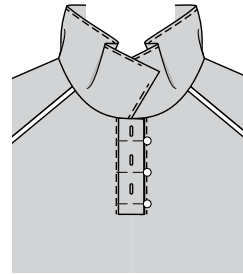
17. On inside, pin pressed edge of collar over seam, placing pins on outside. On outside **STITCH IN THE DITCH** of the seam, catching in pressed edge of collar on the inside.



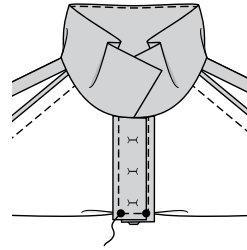
18. Make buttonhole in right placket at markings.



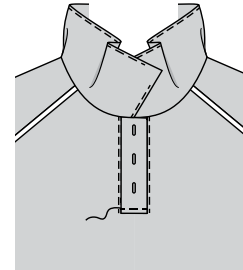
19. To finish lower edge of placket, bring ends of placket to inside. On outside, lap right placket over left, matching small dots; pin.



20. Fold top with right sides together at lower small dots, bringing raw edge of front and placket together. Stitch between the small dots, back-stitching at dots to reinforce the seam.



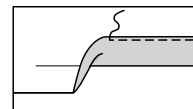
21. On outside, **EDGESTITCH** front close to seam and stitch along stitching line.



FINISHING

22. Press up 1-1/4" (3.2cm) hem allowance on lower edge of top. Stitch in place 1/4" (6mm) from raw edge.

Hem lower edges of sleeves in the same manner.



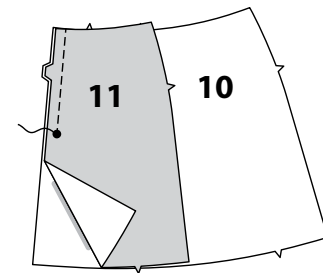
23. Sew buttons to left placket under buttonholes.



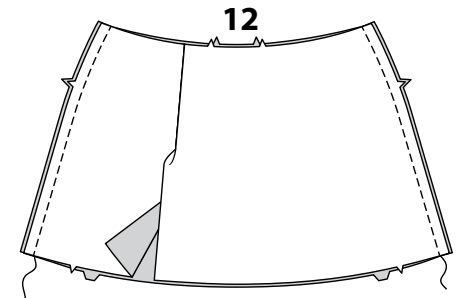
SKORT C, D

SKIRT

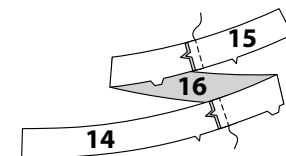
1. With wrong sides together and raw edges even, pin **RIGHT FRONT (10)** to **LEFT FRONT (11)** at side front edges, matching notches. Stitch from upper edge to large dot, back-stitching at dot to reinforce the seam.



2. With right sides together and raw edges even, pin front to **BACK (12)** at side edges. Stitch.

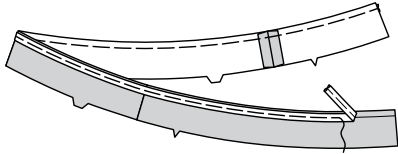


3. Pin **RIGHT FRONT BAND (14)** and **LEFT FRONT BAND (15)** to **BACK BAND (16)** at side edges. Stitch.



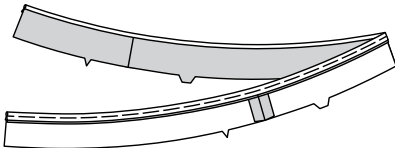
4. FOR VIEW C – Cut a piece of stretch piping the length of the inner edge of band. On outside, pin piping to inner edge, having cord extend beyond seam line and flat edge within the seam allowance. Machine-baste as close to cord as possible without catching in the cord.

TIP: Use a zipper or cording foot when stitching piping.

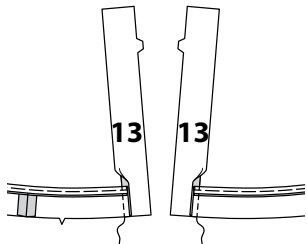


CONTINUE AS FOLLOWS FOR BOTH VIEWS

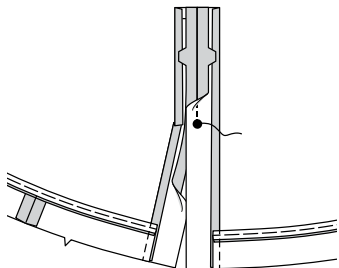
5. Turn under 3/8" (1cm) seam allowance on upper edge of band; press, pressing out the cord on **View C**.



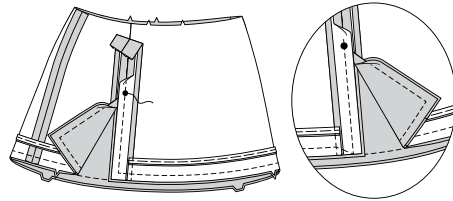
6. With right sides together and raw edges even, pin **FRONT BAND (13)** sections to front ends of long band. Stitch from lower edge to pressed edge of long band ends. Press out front bands, pressing seam toward front.



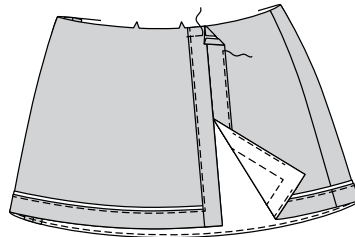
7. Press under remaining inner edge of front bands. With right sides together and raw edges even, pin front band sections together, matching large dots and notches. Stitch from upper edge to large dot, back-stitching at dot to reinforce the seam.



8. Pin the right side of the band to the wrong side of the skirt, matching seams and notches. Stitch, breaking stitching at large dots. **TRIM SEAM.**

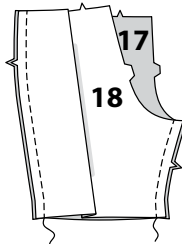


9. UNDERSTITCH the band as far as possible. Turn band to outside press. On outside, **EDGESTITCH** inner edge of band, squaring stitching at inner corners, using a zipper or cording foot for **View C**. Baste band to skirt at upper edge.

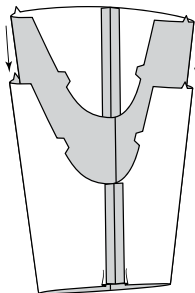


SHORTS

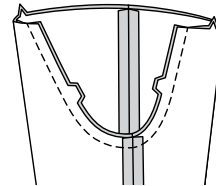
10. Stitch **SHORTS FRONT (17)** to **SHORTS BACK (18)** at inner leg and side edges.



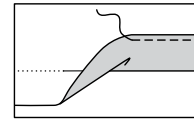
11. With right sides together, insert one leg inside the other.



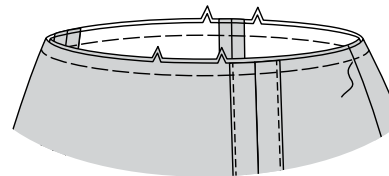
12. With right sides together, pin center seam, matching inner leg seams and notches. Stitch. To reinforce seam, stitch again over first stitching.



13. Press up 1-1/4" (3.2cm) hem allowance on lower edge of shorts. Stitch in place 1/4" (6mm) from raw edge.

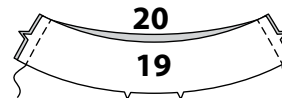


14. Pin the wrong side of the skirt to the right side of the shorts, matching seams and notches at upper edge. Baste.

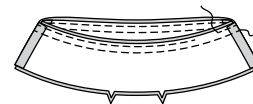


YOKE

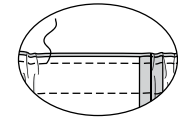
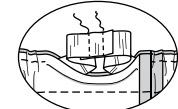
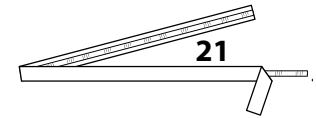
15. Stitch **YOKE FRONT (19)** to **YOKE BACK (20)** at side edges. Stitch facing sections together in the same manner.



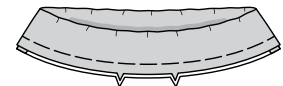
16. With right sides together and raw edges even, pin yoke to yoke facing at upper edge, matching seams. Stitch. To make casing for elastic, stitch a generous 3/8" (1cm) from seamline within the seam allowance, leaving an opening to insert elastic.



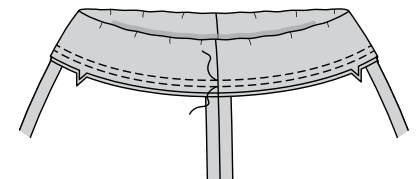
17. Turn yoke; press. Cut a piece of elastic the length of the **GUIDE FOR ELASTIC (21)**. Insert elastic through opening in casing. Overlap ends and hold with a safety pin. Try on yoke and adjust to fit. Stitch ends of elastic together securely. Stitch opening edges of casing together.



18. Distribute fullness evenly. Baste raw edges together.



19. On outside pin yoke to skirt, matching centers, seams, and notches. Stitch. Stitch again 1/4" (6mm) from previous stitching within the seam allowance. Press seam toward skirt, pressing yoke out.





Congrats!

You've completed your sewing adventure

**SHARE
YOUR** LOOK



Post your pattern and tag us
[@simplicity_creative_group](#) and [#simplicitypatterns](#)
for a chance to be featured on our social media.

Look for more PDF patterns at [simplicity.com](https://www.simplicity.com)

Have a question or need help with your sewing project call us at
1-800-782-0323

McCall's
by **design**_{group}

McCall's ©2024 a division of IG Design Group Americas Inc. • Atlanta, GA 30342 USA www.thedesigngroup.com • All Rights Reserved. www.mccall.com • Made in the U.S.A. Fabriqué aux États-Unis.

To be used for individual private home use only and not for commercial or manufacturing purposes. • A usage privé seulement et non à des fins commerciales ou de production en série. • Para uso privado solamente, no se puede utilizar con propósitos de comercialización o de producción en serie.