

McCall's

M8480



Designed and printed in USA

Scan QR code for a Sew-Along video tutorial.
Scannez le code QR pour un didacticiel vidéo de couture.



Average

MISSES' SKIRT IN THREE LENGTHS

Suggested Fabrics: Chambray, Chino, Denim, Twill. **Interfacing:** Lightweight Fusible.

Notions: A,B,C: One 7" (18cm) zipper (cut to fit), one 3/4" (2cm) button.

Sizes	8	10	12	14	16	18	20	22	24	26
European	34	36	38	40	42	44	46	48	50	52

BODY MEASUREMENTS: Select pattern size based on body measurements

Bust	31½	32½	34	36	38	40	42	44	46	48	Ins.
Waist	24	25	26½	28	30	32	34	37	39	41	"
Hip-9" below waist	33½	34½	36	38	40	42	44	46	48	50	"
Back-neck to waist	15¾	16	16¼	16½	16¾	17	17¼	17½	17¾	18	"

Interfacing A,B,C - 20" - 1½ yds.

Skirt A	45**	1½	1½	1½	2	2	2	2	2	2	2	Yds.
	60**	1½	1½	1½	1½	1½	1½	1½	1½	1½	1½	"
Skirt B	45**	3½	3½	3½	3¼	3¼	3¾	3¾	4	4	Yds.	
	60**	2¾	2¾	2¾	2¾	2¾	2¾	2¾	2¾	2¾	"	
Skirt C	45**	4¾	4¾	4¾	4¾	4½	4½	4¾	5	5	Yds.	
	60**	3¼	3¼	3¼	3¾	3½	3½	3¾	3¾	3¾	"	

FINISHED GARMENT MEASUREMENTS (Includes Design and Wearing Ease)

A,B,C Waist	26¼	27¼	28¾	30¾	32¾	34¾	36¾	38¾	40¾	42¾	Ins.
A,B,C Hip	51½	52½	54	56	58	60	62	64	66	68	"
Width, lower edge											
Skirt A	83	84	85½	87½	89½	91½	93½	95½	97½	99½	Ins.
Finished back length from waist											
Skirt A	16	16	16	16	16	16	16	16	16	16	Ins.
Skirt B	28	28	28	28	28	28	28	28	28	28	"
Skirt C	39	39	39	39	39	39	39	39	39	39	"

*with nap **without nap

Moins Facile

JUPE EN TROIS LONGUEURS POUR JEUNES FEMMES

Tissus Conseillés: Chambray, Chino, Denim, Twill. **Entoilage:** Thermocollant léger.

Mercierie: A,B,C: 1 fermeture à glissière de 18cm (coupée pour ajuster), 1 bouton de 2cm.

Tailles	8	10	12	14	16	18	20	22	24	26
Françaises	36	38	40	42	44	46	48	50	52	54
Européen	34	36	38	40	42	44	46	48	50	52

MESURES DU CORPS: Choisissez la taille du patron basée sur les mesures du corps

Poitrine	80	83	87	92	97	102	107	112	117	122	cm
Taille	61	64	67	71	76	81	87	94	99	104	"
Hanches (23cm au-dessous de la taille)											
	85	88	92	97	102	107	112	117	122	127	cm
Dos du cou à la taille	40	40.5	41.5	42	42.5	43	44	44.5	45	46	"

Entoilage A,B,C - 51cm - 1.3m.

Jupe A	115cm*	1.7	1.7	1.7	1.8	1.8	1.8	1.8	1.8	1.8	1.8	m
	150cm*	1.4	1.4	1.4	1.4	1.4	1.4	1.4	1.4	1.4	1.4	"
Jupe B	115cm*	2.9	2.9	2.9	3.0	3.0	3.4	3.5	3.5	3.5	3.7	m
	150cm*	2.5	2.5	2.6	2.6	2.6	2.6	2.6	2.6	2.6	2.6	"
Jupe C	115cm*	4.0	4.0	4.0	4.0	4.0	4.1	4.2	4.3	4.5	4.6	m
	150cm*	3.0	3.0	3.0	3.1	3.2	3.2	3.3	3.3	3.3	3.3	"

MESURES DES VÊTEMENTS FINI (Motif et aisance de port compris)

A,B,C Taille	67	69	73	78	83	88	93	98	104	109	cm
A,B,C Hanches	131	133	137	142	147	152	157	163	168	173	"
Largeur à l'ourlet											
Jupe A	211	213	217	222	227	232	237	243	248	253	cm
Longueur finie - dos, taille à l'ourlet											
Jupe A	41	41	41	41	41	41	41	41	41	41	cm
Jupe B	71	71	71	71	71	71	71	71	71	71	"
Jupe C	99	99	99	99	99	99	99	99	99	99	"

*avec sens **sans sens



A



B



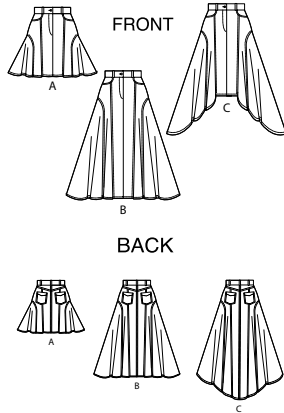
C



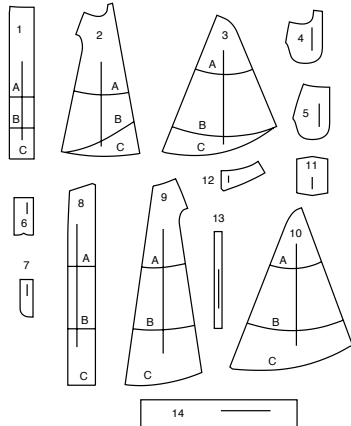
C



C

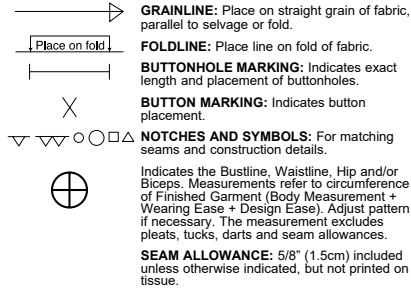


14 PATTERN PIECES

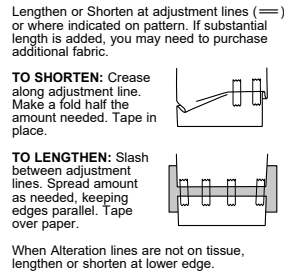


- 1 FRONT - A,B,C
- 2 MIDDLE FRONT A,B,C
- 3 SIDE FRONT - A,B,C
- 4 POCKET FACING - B,C
- 5 SIDE FRONT AND POCKET - A,B,C
- 6 LEFT FLY - A,B,C
- 7 RIGHT FLY FACING - A,B,C
- 8 BACK - A,B,C
- 9 MIDDLE BACK - A,B,C
- 10 SIDE BACK - A,B,C
- 11 BACK POCKET - A,B,C
- 12 YOKE BACK - A,B,C
- 13 CARRIER - A,B,C
- 14 WAISTBAND - A,B,C

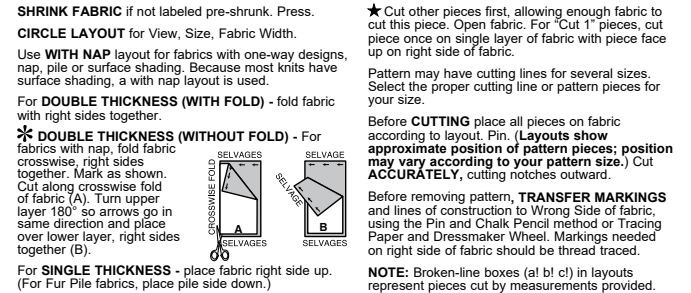
PATTERN MARKINGS



ADJUST IF NECESSARY



CUTTING AND MARKING



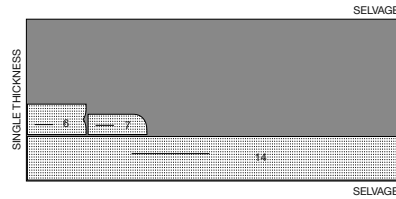
CUTTING LAYOUTS

RIGHT SIDE OF PATTERN	WRONG SIDE OF PATTERN	RIGHT SIDE OF FABRIC	WRONG SIDE OF FABRIC
-----------------------	-----------------------	----------------------	----------------------

INTERFACING A, B, C

use pieces: 6 7 14

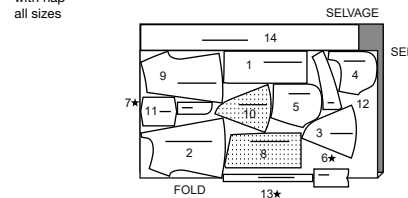
20" (51 cm) without nap all sizes



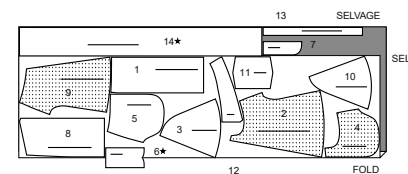
SKIRT A

use pieces: 1 2 3 4 5 6 7 8 9 10 11 12 13 14

45" (115 cm) with nap all sizes



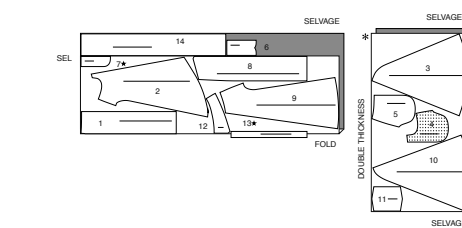
60" (150 cm) with nap all sizes



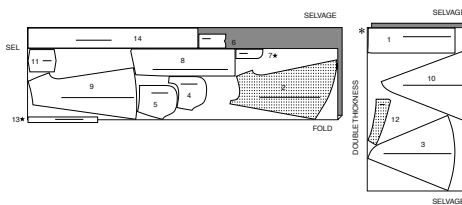
SKIRT B

use pieces: 1 2 3 4 5 6 7 8 9 10 11 12 13 14

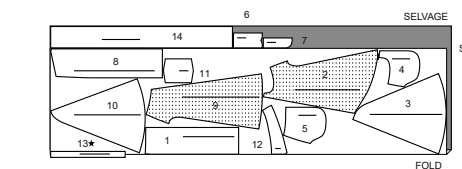
45" (115 cm) with nap sizes 8 10 12 14 16



45" (115 cm) with nap sizes 18 20 22 24 26



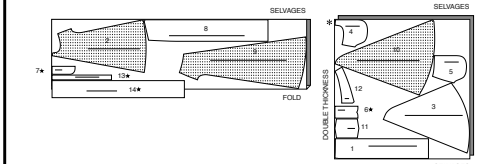
60" (150 cm) with nap all sizes



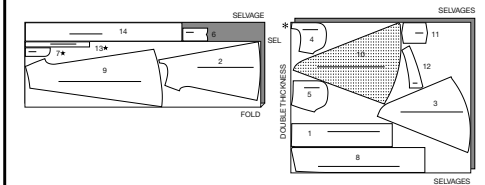
SKIRT C

use pieces: 1 2 3 4 5 6 7 8 9 10 11 12 13 14

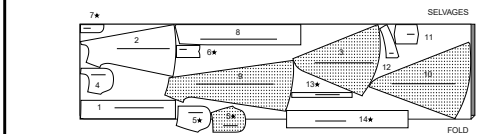
45" (115 cm) with nap sizes 8 10 12 14 16 18 20 22



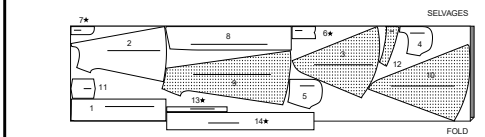
45" (115 cm) with nap sizes 24 26



60" (150 cm) with nap sizes 8 10 12 14 16 18

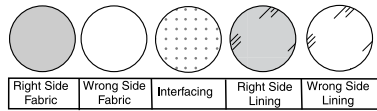


60" (150 cm) with nap sizes 20 22 24 26



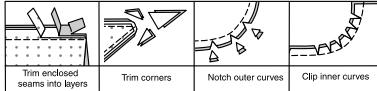
SEWING INFORMATION

FABRIC KEY



SEAM ALLOWANCES

Use 1/4" (6mm) seam allowances unless otherwise indicated.



PIN AND FIT

Pin or baste seams, **RIGHT SIDE TOGETHER**, matching notches. Fit garment before stitching major seams.

PRESS

Press seam allowances flat; then open unless otherwise stated. Clip where necessary so they lie flat.

GLOSSARY

Sewing terms appearing in **BOLD TYPE** in Sewing Instructions are explained below.

FINISH - Stitch 1/4" (6mm) from raw edge and finish with one of the following: (1) Pink OR (2) Overcast OR (3) Turn in along stitching and stitch close to fold OR (4) Overlock.

SLIPSTITCH - Slide needle through a folded edge, then pick up a thread of underneath fabric.

STAYSTITCH - Stitch 1/8" (3mm) from seamline in seam allowance (usually 1/2" (13mm) from raw edge).

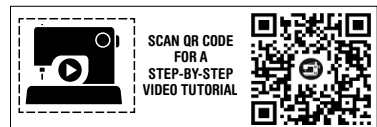
TOPSTITCH - On outside, stitch 1/4" (6mm) from edge, seam or previous stitching, using presser foot as guide, or stitch where indicated in instructions.

UNDERSTITCH - Open out facing or underside of garment; stitch to seam allowance close to seam.

PATTERN PIECES WILL BE IDENTIFIED BY NUMBERS THE FIRST TIME THEY ARE USED.

STITCH SEAMS WITH RIGHT SIDES TOGETHER UNLESS OTHERWISE STATED.

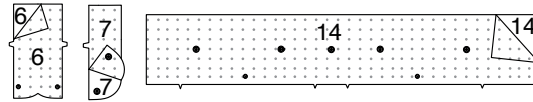
NOTE: Under each sub-heading, the first view will be illustrated, unless otherwise illustrated.



SKIRT A, B, C

INTERFACING

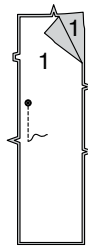
1. Fuse **INTERFACING** to wrong side of each matching **FABRIC** section, following manufacturer's instructions.



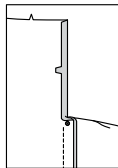
FRONT

FLY, FLY FACING

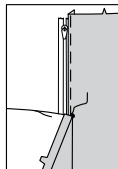
2. Pin **FRONT** (1) sections, right sides together, matching large dots. Stitch center front seam between large dot and single notch.



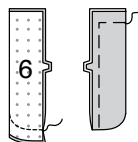
3. Turn in 3/8" (1cm) seam allowance on left front opening edge; press.



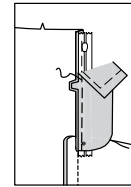
4. Place closed zipper (face up) under left front opening edge, having pressed edge close to zipper teeth and zipper stop at small dot. Using a zipper foot, baste close to pressed edge.



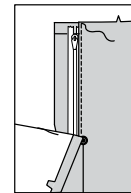
5. With right sides together, fold **LEFT FLY** (6) along foldline. Stitch lower edge. Trim. Turn. Press. Baste raw edges.



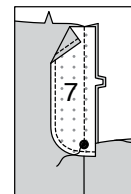
6. On inside, pin left fly to left front opening edge (over zipper), matching notches and small dots, having raw edges even. Baste along previous basting for zipper.



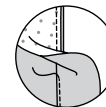
7. On outside, using a zipper foot, stitch close to pressed edge of front through all layers.



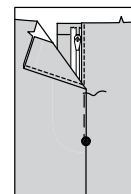
8. **FINISH** outer edge to **RIGHT FLY FACING** (7). Pin fly facing to right front opening edge, matching notches and large dots. Stitch, ending at large dot; trim.



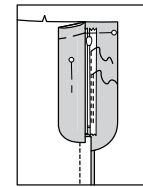
9. **UNDERSTITCH** fly facing. Turn facing to inside.



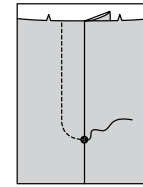
10. Lap right front over left, matching centers. Baste close to edge through all thicknesses.



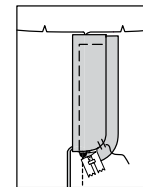
11. Pin left fly out of the way. Open out fly facing. Pin remaining zipper tape to fly facing, keeping right front free. Using a zipper foot, stitch in place close to zipper teeth and along center of zipper tape.



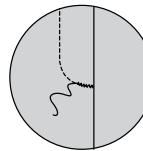
12. Turn facing down. On outside, stitch right front along stitching line, keeping left fly free.



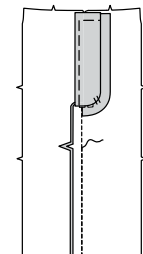
13. Turn fly back in place. On inside, hand tack fly and facing together at lower edge, as shown. Trim away excess zipper tape even with lower edge of fly, if needed.



14. If desired, on outside, machine-stitch a bar tack across lower end of fly through all thicknesses.

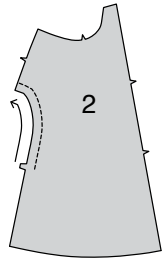


15. Stitch center front seam below notch. Press seam open.

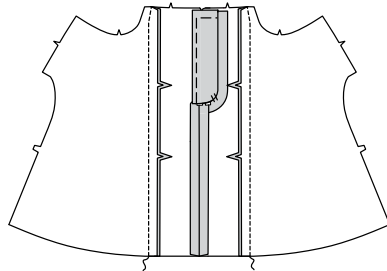


MIDDLE AND SIDE FRONT

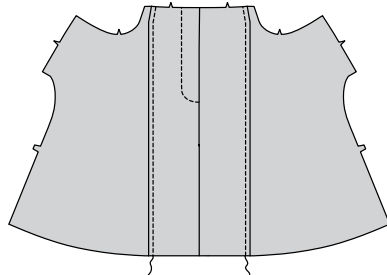
16. **STAYSTITCH** side curved edge of MIDDLE FRONT (2) above double notches.



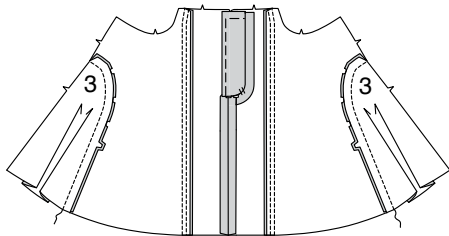
17. Pin each middle front section to front, matching notches. Stitch. Press seams toward front.



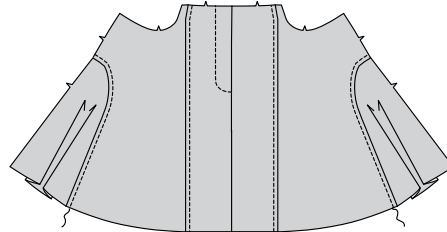
18. **TOPSTITCH** front.



19. Pin SIDE FRONT (3) section to middle front, matching notches, clipping middle front where necessary. Stitch. Press seams toward middle front.

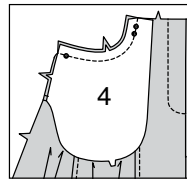


20. **TOPSTITCH** middle front.

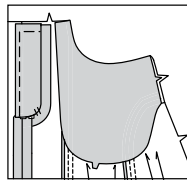


SIDE POCKETS

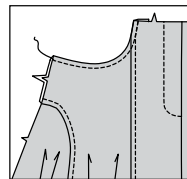
21. With right sides together, stitch POCKET FACING (4) to side edge of front, matching dots. Trim seam.



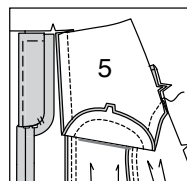
22. Turn pocket facing to inside; press.



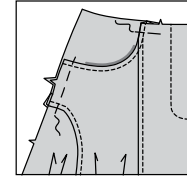
23. **TOPSTITCH** upper side edge of front.



24. Stitch one SIDE FRONT AND POCKET (5) section to each pocket facing at outer edge, matching notches, keeping front free.

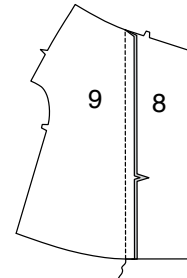


25. Baste upper and side edges together.

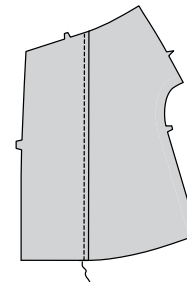


BACK

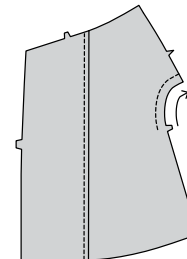
26. With right sides together, stitch BACK (8) to MIDDLE BACK (9), matching notches. Press seams toward back.



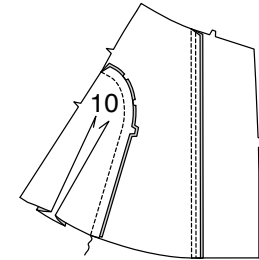
27. **TOPSTITCH** back.



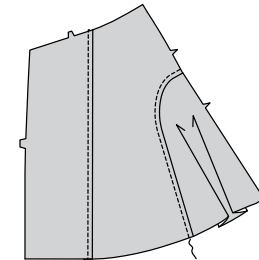
28. **STAYSTITCH** side curved edge of middle back above double notches.



29. Pin SIDE BACK (10) to middle back, matching notches, clipping middle back where necessary. Stitch. Press seams toward middle back.

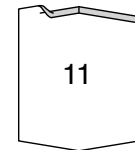


30. **TOPSTITCH** middle back.



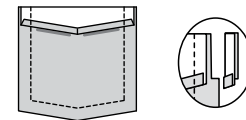
BACK POCKETS

31. Press under 3/8" (1 cm) on upper edge of BACK POCKET (11).



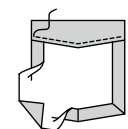
32. Turn upper edge to OUTSIDE along foldline, forming facing.

Stitch along seam line on raw edges. Trim seam allowance in the facing area to 1/4" (6mm).

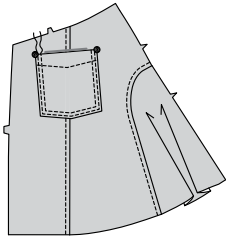


33. Turn corners RIGHT side out, turning facing to the WRONG side; press, pressing under raw edges along stitching, folding in corners.

Stitch facing close to inner edge.

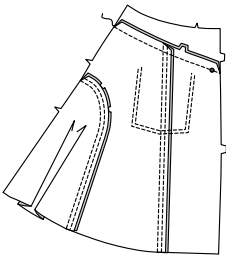


34. On OUTSIDE, pin pocket to back, matching dots. Stitch close to sides and lower edge of pocket. **TOPSTITCH** 1/4" (6mm) away.

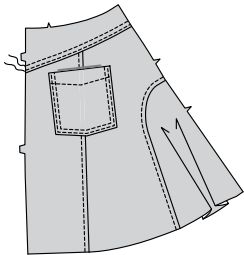


YOKE AND REMAINING SEAMS

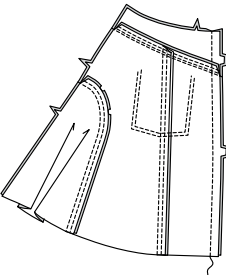
35. Stitch YOKE BACK (12) to upper edge of back, matching small dots. Press seam toward yoke.



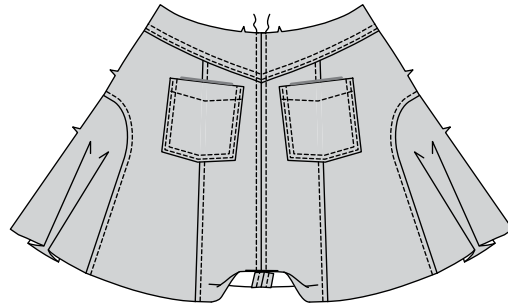
36. Stitch close to lower edge of yoke. **TOPSTITCH** 1/4" (6mm) away.



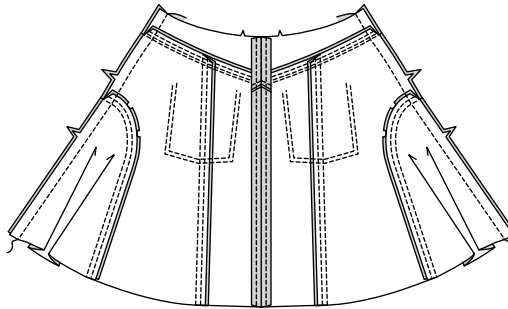
37. With right sides together, pin back and yoke sections, matching notches and seams. Stitch center back seam. Press seams open.



38. **TOPSTITCH** back 1/4" (6mm) each side of center seam.



39. Stitch front and back together at sides.



CARRIERS

40. Fold CARRIERS (13) in half lengthwise, with WRONG sides together. Press, setting in a crease.



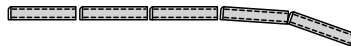
41. Open out long edges of carrier and turn them to WRONG side so that they meet at the crease. Press.



42. Fold carrier in half lengthwise, bringing pressed edges together. Stitch close to both long edges.



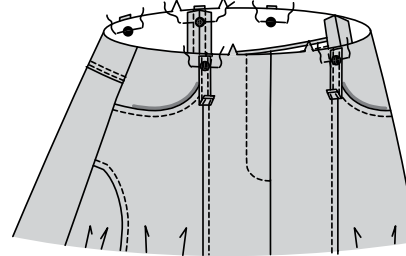
43. Cut carriers into five sections, each 3-3/4" (9.5cm) long.



44. Turn in 5/8" (1.5cm) on one end of each carrier; press.

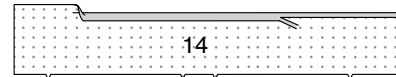


45. Pin remaining end of carriers to upper edge of skirt, centering over large dots, having raw edges even. Baste.

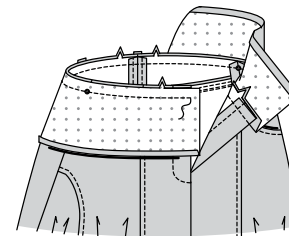


WAISTBAND

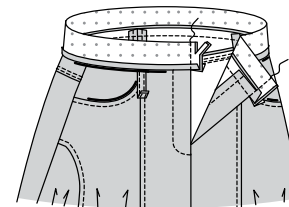
46. Press under 5/8" (1.5cm) on long, unnotched edge of WAISTBAND (14). Trim pressed seam allowance to 3/8" (1cm).



47. Pin waistband to upper edge of skirt, right sides together, matching notches, centers and small dots to side seams. Stitch; trim seams. Press seams toward waistband.

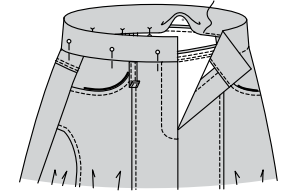


48. With right sides together, fold waistband along solid line. Stitch ends even with front edges. Trim ends to 1/4" (6mm) from stitching.

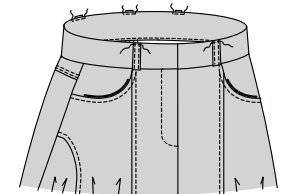


49. Turn right side out; press.

Stitch-in-the-ditch- Working on the RIGHT side of the fabric, "stitch-in-the-ditch", (in the groove where the waistband joins the fabric), being sure to catch in the underneath layer of waistband in the stitching.



50. Turn carriers up; pin to upper edge of waistband, centering over large dots, having ends even with waistband. **EDGE**STITCH in place, through all thicknesses.

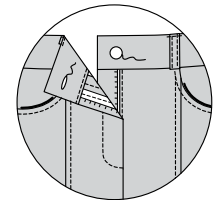


FINISHING

BUTTONHOLE AND BUTTON

51. Make buttonhole in right front end of waistband at marking.

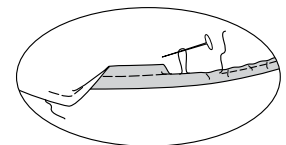
On outside, sew button to left front end of waistband at marking.



HEM

52. Stitch 1/4" (6mm) from lower edge of skirt using long machine stitches, as shown.

Turn up 5/8" (1.5cm) hem at lower edge of skirt, turning in 1/4" (6mm) on raw edge. Pull thread to ease in fullness. Stitch; press.





Congrats!

You've completed your sewing adventure

**SHARE
YOUR** LOOK



Post your pattern and tag us
[@simplicity_creative_group](#) and [#simplicitypatterns](#)
for a chance to be featured on our social media.

Look for more PDF patterns at [simplicity.com](https://www.simplicity.com)

Have a question or need help with your sewing project call us at
1-800-782-0323

McCall's
by **design**_{group}

McCall's ©2024 a division of IG Design Group Americas Inc. • Atlanta, GA 30342 USA www.thedesigngroup.com • All Rights Reserved. www.mccall.com • Made in the U.S.A. Fabriqué aux États-Unis.

To be used for individual private home use only and not for commercial or manufacturing purposes. • A usage privé seulement et non à des fins commerciales ou de production en série. • Para uso privado solamente, no se puede utilizar con propósitos de comercialización o de producción en serie.