

McCall's

M8478



Designed and printed in USA

Average

MISSES' CORSET TOPS

Suggested Fabrics: Chambray, Denim, Linen, Twill. **Lining:** Cotton Blends, Lining Fabrics.
Interfacing: Lightweight Fusible.

Notions: A: Three 5/8" (1.5cm) buttons. B, C: Five 5/8" (1.5cm) buttons.

Sizes	6	8	10	12	14	16	18	20	22	24
European	32	34	36	38	40	42	44	46	48	50

BODY MEASUREMENTS: Select pattern size based on body measurements

Bust	30½	31½	32½	34	36	38	40	42	44	46	Ins.
Waist	23	24	25	26½	28	30	32	34	37	39	"
Hip-9" below waist	32½	33½	34½	36	38	40	42	44	46	48	"
Back-neck to waist	15½	15¾	16	16¼	16½	16¾	17	17¼	17½	17¾	"

Top A	45**	¾	¾	¾	¾	¾	¾	¾	¾	¾	1	Yds.
	60**	¾	¾	¾	¾	¾	¾	¾	¾	¾	¾	"
Lining	45***	¾	¾	¾	¾	¾	¾	¾	¾	¾	¾	"
Interfacing	20"	1½	1½	1½	1½	1½	1½	1½	1½	1½	1½	"
Top B	45**	1½	1½	1½	1½	1½	1½	1½	1½	1½	1½	Yds.
	60**	1	1	1	1	1	1	1	1	1	1	"
Lining	45***	¾	¾	¾	1	1	1	1	1	1½	1½	"
Interfacing	20"	2	2	2½	2½	2½	2½	2½	2½	2½	2½	"
Top C	45**	1½	1½	1½	1½	1½	1½	1½	1½	1½	1½	Yds.
	60**	1	1	1	1	1½	1½	1½	1½	1½	1½	"
Lining	45***	1	1	1	1	1	1½	1½	1½	1½	1½	"
Interfacing	20"	2½	2½	2½	2½	2½	2½	2½	2½	2½	2½	"

FINISHED GARMENT MEASUREMENTS (Includes Design and Wearing Ease)

A,B,C Bust	35½	36½	37½	39	41	43	45	47	49	51	Ins.
A,B,C Waist	26½	27½	28½	30	32	34	36	38	40	42	"

Finished back length from base of neck

Top A	12½	12¾	13	13¼	13½	13¾	14	14¼	14½	14¾	Ins.
Top B	17½	17¾	18	18¼	18½	18¾	19	19¼	19½	19¾	"
Top C	18½	18¾	19	19¼	19½	19¾	20	20¼	20½	20¾	"

*with nap **without nap

Moins Facile

HAUTS DE CORSET POUR JEUNES FEMMES

Tissus Conseillés: Chambray, Denim, Toile de lin, Twill. **Doubleure:** Cotonnades, Tissus à doubleure.
Entoilage: thermocollant léger.

Merceries: A: 3 boutons de 1.5cm. B,C: 5 boutons de 1.5cm.

Tailles	6	8	10	12	14	16	18	20	22	24
Françaises	34	36	38	40	42	44	46	48	50	52
Européen	32	34	36	38	40	42	44	46	48	50

MESURES DU CORPS: Choisissez la taille du patron basée sur les mesures du corps

Poitrine	78	80	83	87	92	97	102	107	112	117	cm
Taille	58	61	64	67	71	76	81	87	94	99	"

Hanches (23cm au-dessous de la taille)

	83	85	88	92	97	102	107	112	117	122	cm
Dos du cou à la taille	39.5	40	40.5	41.5	42	42.5	43	44	44.5	45	"

Haut A	115cm*	0.7	0.7	0.7	0.7	0.7	0.8	0.8	0.8	0.8	0.8	m
	150cm*	0.6	0.6	0.6	0.6	0.6	0.6	0.6	0.6	0.7	0.7	"
Doubleure	115cm**	0.6	0.7	0.7	0.7	0.7	0.7	0.7	0.7	0.7	0.7	"
Entoilage	51cm	1.3	1.3	1.3	1.3	1.4	1.4	1.4	1.4	1.5	1.5	"
Haut B	115cm*	1.0	1.0	1.0	1.0	1.0	1.0	1.1	1.1	1.1	1.3	m
	150cm*	0.9	0.9	0.9	0.9	0.9	0.9	0.9	0.9	0.9	0.9	"
Doubleure	115cm**	0.8	0.8	0.8	0.9	0.9	0.9	0.9	0.9	0.9	1.0	"
Entoilage	51cm	1.8	1.8	1.9	1.9	1.9	1.9	2.1	2.1	2.1	2.2	"
Haut C	115cm*	1.0	1.0	1.1	1.1	1.1	1.1	1.1	1.1	1.4	1.4	m
	150cm*	0.9	0.9	0.9	0.9	0.9	1.0	1.0	1.0	1.0	1.0	"
Doubleure	115cm**	0.9	0.9	0.9	0.9	0.9	1.0	1.0	1.1	1.1	1.1	"
Entoilage	51cm	1.9	1.9	1.9	2.1	2.1	2.1	2.1	2.1	2.2	2.2	"

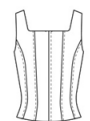
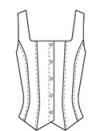
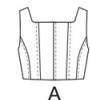
MESURES DES VÊTEMENTS FINI (Motif et aisance de port compris)

A,B,C Poitrine	90	93	95	99	104	109	114	119	124	130	cm
A,B,C Taille	67	70	72	76	81	86	91	97	102	107	"

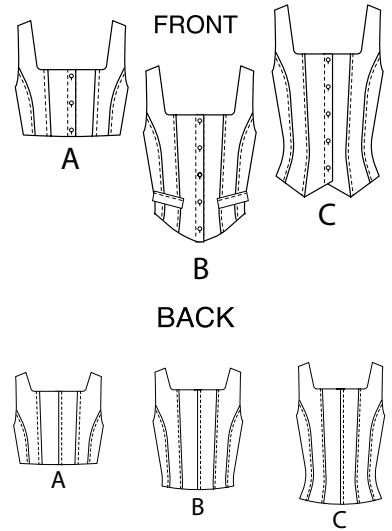
Longueur finie – dos, votre nuque à l'ourlet

Haut A	32	32	33	34	34	35	36	36	37	37	cm
Haut B	44	45	46	46	47	48	48	49	50	50	"
Haut C	47	48	48	49	50	50	51	51	52	53	"

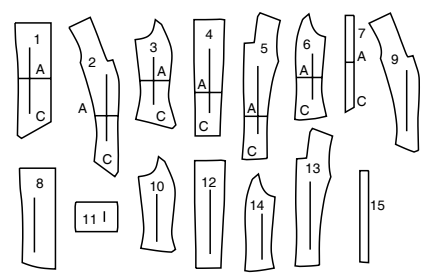
*avec sens **sans sens



C



15 PATTERN PIECES



- 1 Front-A,C
- 2 Middle Front-A,C
- 3 Side Front-A,C
- 4 Back-A,C
- 5 Middle Back-A,C
- 6 Side Back-A,C
- 7 Guide for Buttonholes-A,C
- 8 Front-B
- 9 Middle Front-B
- 10 Side Front-B
- 11 Flap-B
- 12 Back-B
- 13 Middle Back-B
- 14 Side Back-B
- 15 Guide for Buttonholes-B

PATTERN MARKINGS
 GRAINLINE: Place on straight grain of fabric, parallel to selvage or fold.
 FOLDLINE: Place line on fold of fabric.
 BUTTONHOLE MARKING: Indicates exact length and placement of buttonholes.
 BUTTON MARKING: Indicates button placement.
 NOTCHES AND SYMBOLS: For matching seams and construction details.
 Indicates the Bustline, Waistline, Hip and/or Biceps. Measurements refer to circumference of Finished Garment (Body Measurement + Wearing Ease + Design Ease). Adjust pattern if necessary. The measurement excludes pleats, tucks, darts and seam allowances.
 SEAM ALLOWANCE: 5/8" (1.5cm) included unless otherwise indicated, but not printed on tissue.

ADJUST IF NECESSARY
 Lengthen or Shorten at adjustment lines (==) or where indicated on pattern. If substantial length is added, you may need to purchase additional fabric.
TO SHORTEN: Crease along adjustment line. Make a fold half the amount needed. Tape in place.
TO LENGTHEN: Slash between adjustment lines. Spread amount as needed, keeping edges parallel. Tape over paper.
 When Alteration lines are not on tissue, lengthen or shorten at lower edge.

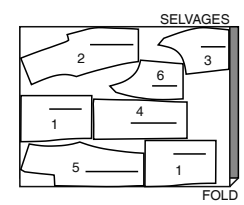
CUTTING AND MARKING
SHRINK FABRIC if not labeled pre-shrunk. Press.
CIRCLE LAYOUT for View, Size, Fabric Width.
 Use **WITH NAP** layout for fabrics with one-way designs, nap, pile or surface shading. Because most knits have surface shading, a with nap layout is used.
 For **DOUBLE THICKNESS (WITH FOLD)** - fold fabric with right sides together.
***DOUBLE THICKNESS (WITHOUT FOLD)** - For fabrics with nap, fold fabric crosswise, right sides together. Mark as shown. Cut along crosswise fold of fabric (A). Turn upper layer 180° so arrows go in same direction and place over lower layer, right sides together (B).
 For **SINGLE THICKNESS** - place fabric right side up. (For Fur Pile fabrics, place pile side down.)

★ Cut other pieces first, allowing enough fabric to cut this piece. Open fabric. For "Cut 1" pieces, cut piece once on single layer of fabric with piece face up on right side of fabric.
 Pattern may have cutting lines for several sizes. Before **CUTTING** place all pieces on fabric according to layout. Pin. (**Layouts show approximate position of pattern pieces; position may vary according to your pattern size.**) Cut **ACCURATELY**, cutting notches outward.
 Before removing pattern, **TRANSFER MARKINGS** and lines of construction to **Wrong Side** of fabric, using the Pin and Chalk Pencil method or Tracing Paper and Dressmaker Wheel. Markings needed on right side of fabric should be thread traced.
NOTE: Broken-line boxes (a! b! c!) in layouts represent pieces cut by measurements provided.

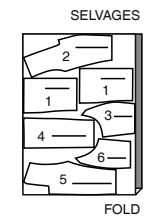
CUTTING LAYOUTS

TOP A
 USE PIECES 1 2 3 4 5 6

45" (115CM)
 WITH NAP
 ALL SIZES

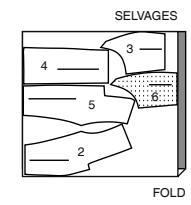


60" (150CM)
 WITH NAP
 ALL SIZES



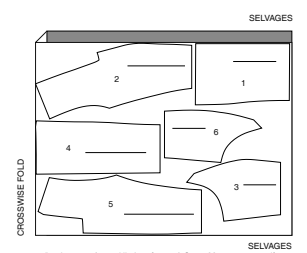
LINING A
 USE PIECES 2 3 4 5 6

45" (115CM)
 WITHOUT NAP
 ALL SIZES



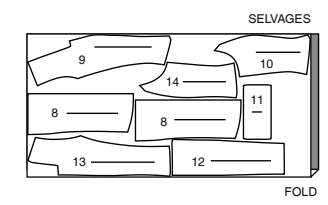
INTERFACING A
 USE PIECES 1 2 3 4 5 6

20" (51CM)
 ALL SIZES

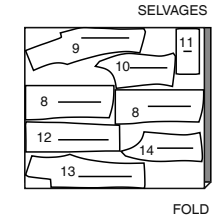


TOP B
 USE PIECES 8 9 10 11 12 13 14

45" (115CM)
 WITH NAP
 ALL SIZES

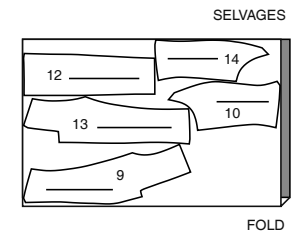


60" (150CM)
 WITH NAP
 ALL SIZES



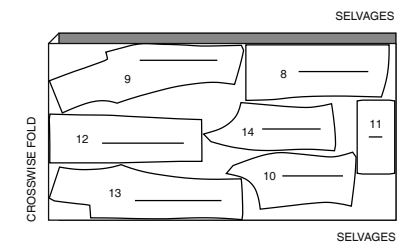
LINING B
 USE PIECES 9 10 12 13 14

45" (115CM)
 WITHOUT NAP
 ALL SIZES



INTERFACING B
 USE PIECES 8 9 10 11 12 13 14

20" (51CM)
 ALL SIZES

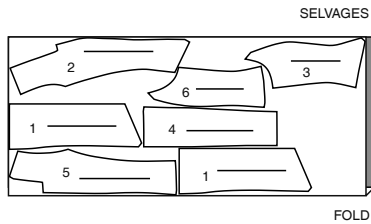


RIGHT SIDE OF PATTERN	WRONG SIDE OF PATTERN	RIGHT SIDE OF FABRIC	WRONG SIDE OF FABRIC
-----------------------	-----------------------	----------------------	----------------------

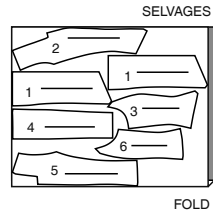
TOP C

USE PIECES 1 2 3 4 5 6

45" (115CM)
WITH NAP
ALL SIZES



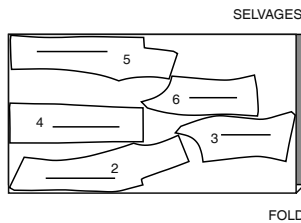
60" (150CM)
WITH NAP
ALL SIZES



LINING C

USE PIECES 2 3 4 5 6

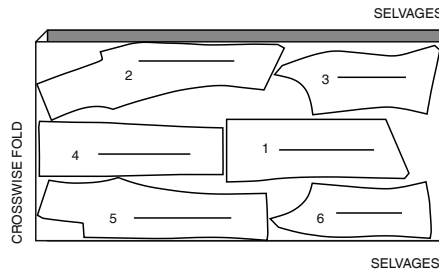
45" (115CM)
WITHOUT NAP
ALL SIZES



INTERFACING C

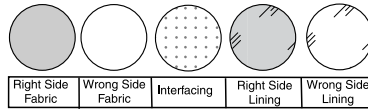
USE PIECES 1 2 3 4 5 6

20" (51CM)
ALL SIZES



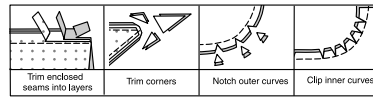
SEWING INFORMATION

FABRIC KEY



SEAM ALLOWANCES

Use 1/4" (6mm) seam allowances unless otherwise indicated.



PIN AND FIT

Pin or baste seams, **RIGHT SIDE TOGETHER**, matching notches. Fit garment before stitching major seams.

PRESS

Press seam allowances flat; then open unless otherwise stated. Clip where necessary so they lie flat.

GLOSSARY

Sewing terms appearing in **BOLD TYPE** in Sewing Instructions are explained below.

SLIPSTITCH - Slide needle through a folded edge, then pick up a thread of underneath fabric.

STAYSTITCH - Stitch 1/8"(3mm) from seamline in seam allowance (usually 1/2"(1.3cm) from raw edge).

UNDERSTITCH - Open out facing or underside of garment; stitch to seam allowance close to seam.

TOPSTITCH - On outside, stitch 1/4"(6mm) from edge, seam or previous stitching, using presser foot as guide, or stitch where indicated in instructions.

SEWING TUTORIALS



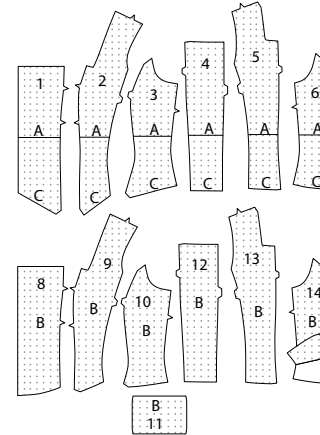
Build your skills viewing short, easy-to-follow videos at simplicity.com/sewingtutorials

TOP A, B, C

NOTE: Under each sub-heading, the first View will be illustrated, unless otherwise indicated

INTERFACING

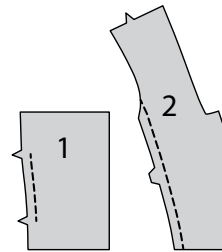
1. Pin **INTERFACING** to wrong side of each matching **FABRIC** section. Fuse, following manufacturer's instructions.



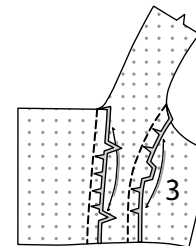
FRONT and back

VIEWS A, C:

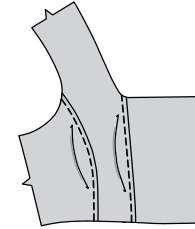
2. For each side, **STAYSTITCH** side edge of one **FRONT** (1) section below upper notch. **NOTE:** Remaining front sections will be used as facing. **STAYSTITCH** side edge of **MIDDLE FRONT** (2).



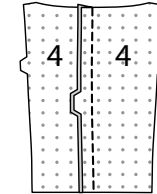
3. With **RIGHT** sides together, pin middle front to side edge of front, clipping front where necessary. Baste. Stitch. Press seam toward middle front. With **RIGHT** sides together, pin **SIDE FRONT** (3) to side edge of middle front, clipping middle front where necessary. Baste. Stitch. Press seam toward side front.



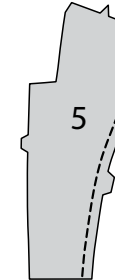
4. **TOPSTITCH** middle front and side front seams, as shown.



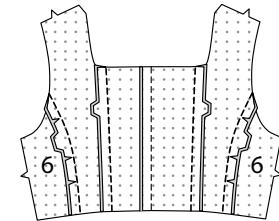
5. Stitch **BACK** (4) sections together at center back. Press seam toward **RIGHT** back.



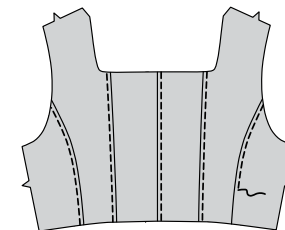
6. **STAYSTITCH** side edge of **MIDDLE BACK** (5).



7. With **RIGHT** sides together, pin middle back to side edges of back. Stitch. Press seams toward middle back. With **RIGHT** sides together, pin **SIDE BACK** (6) sections to side edges of middle back, clipping middle back where necessary. Baste. Stitch. Press seam toward side back.

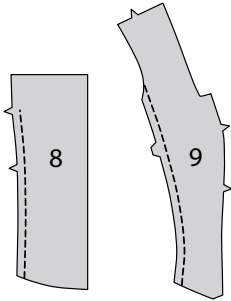


8. **TOPSTITCH** **RIGHT** back, middle back and side back seams, as shown.

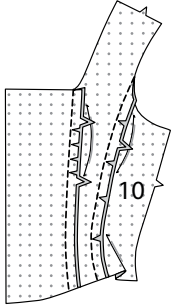


VIEW B:

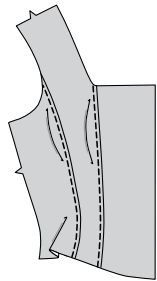
9. For each side, **STAYSTITCH** side edge of one **FRONT** (8) section below upper notch. **NOTE:** Remaining front sections will be used as facing. **STAYSTITCH** side edge of **MIDDLE FRONT** (9).



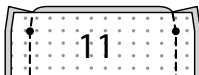
10. With **RIGHT** sides together, pin middle front to side edge of front, clipping front where necessary. Baste. Stitch. Press seam toward middle front. With **RIGHT** sides together, pin **SIDE FRONT** (10) to side edge of middle front, clipping middle front where necessary. Baste. Stitch. Press seam toward side front.



11. **TOPSTITCH** middle front and side front seams, as shown.



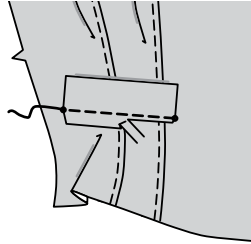
12. With **RIGHT** sides together, fold **FLAP** (11) along foldline. Stitch, leaving upper edge open, as shown. Trim.



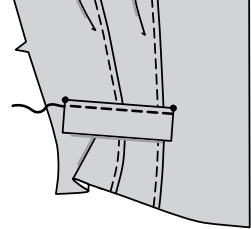
13. Turn. Press. Baste raw edges together.



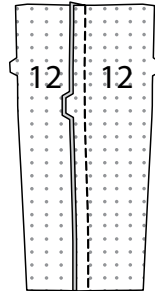
14. Pin flap to front, matching symbols, placing seamline along placement line. Stitch. Trim flap seam allowance to a scant 1/4" (6mm), being careful not to cut top.



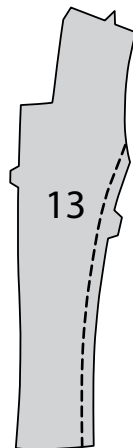
15. Turn flap down. Press. **TOPSTITCH** upper edge of flap.



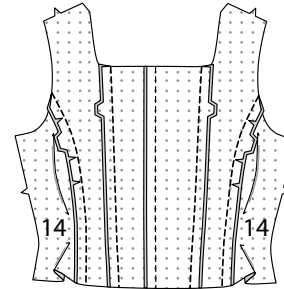
16. Stitch **BACK** (12) sections together at center back. Press seam toward **RIGHT** back.



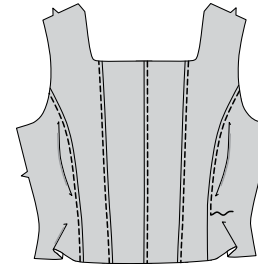
17. **STAYSTITCH** side edge of **MIDDLE BACK** (13).



18. With **RIGHT** sides together, pin middle back to side edges of back. Stitch. Press seams toward middle back. With **RIGHT** sides together, pin **SIDE BACK** (14) sections to side edges of middle back, clipping middle back where necessary. Baste. Stitch. Press seam toward side back.

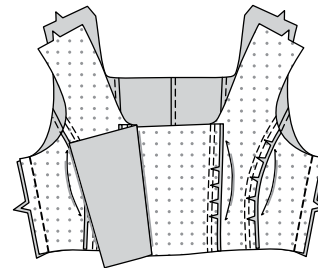


19. **TOPSTITCH** **RIGHT** back, middle back and side back seams, as shown.



ALL VIEWS:

20. Stitch fronts to back at sides.



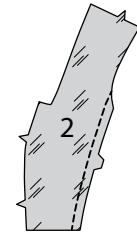
LINING AND FINISHING

VIEWS A, C:

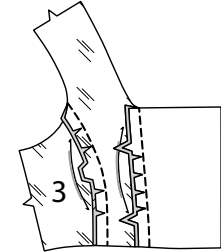
21. **STAYSTITCH** side edge of front **FACING** (1) sections between notches.



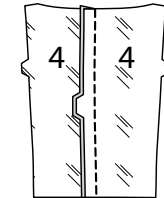
22. **STAYSTITCH** side edge of middle front **LINING** (2).



23. With **RIGHT** sides together, pin middle front lining to side edge of front facing, clipping front facing where necessary. Baste. Stitch. With **RIGHT** sides together, pin side front **LINING** (3) to side edge of middle front lining, clipping middle front lining where necessary. Baste. Stitch.



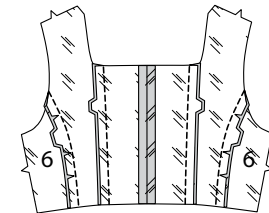
24. Stitch back **LINING** (4) sections together at center back.



25. **STAYSTITCH** side edge of middle back **LINING** (5).

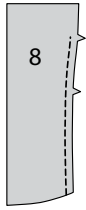


26. With **RIGHT** sides together, pin middle back lining to side edges of back lining. Stitch. With **RIGHT** sides together, pin side back **LINING** (6) sections to side edges of middle back lining, clipping middle back lining where necessary. Baste. Stitch.

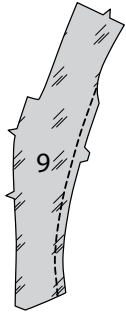


VIEW B:

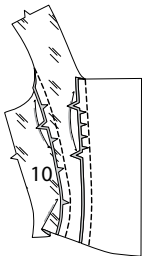
27. **STAYSTITCH** side edge of front **FACING** (8) below upper notch.



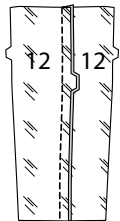
28. **STAYSTITCH** side edge of middle front **LINING** (9).



29. With **RIGHT** sides together, pin middle front lining to side edge of front facing, clipping front facing where necessary. Baste. Stitch. With **RIGHT** sides together, pin side front **LINING** (10) to side edge of middle front lining, clipping middle front lining where necessary. Baste. Stitch.



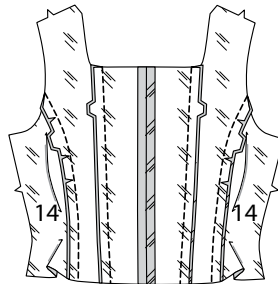
30. Stitch back **LINING** (12) sections together at center back.



31. **STAYSTITCH** side edge of middle back **LINING** (13).

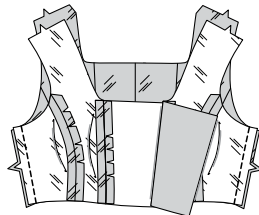


32. With **RIGHT** sides together, pin middle back lining to side edges of back lining, clipping back lining where necessary. Baste. Stitch. With **RIGHT** sides together, pin side back **LINING** (14) sections to side edges of middle back lining, clipping middle back lining where necessary. Baste. Stitch.

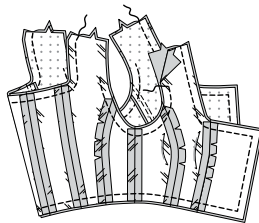


ALL VIEWS:

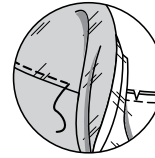
33. Stitch fronts to back at sides.



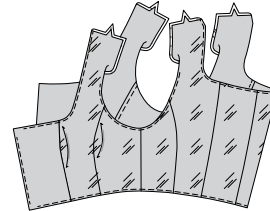
34. With **RIGHT** sides together, pin facing and lining to front and back, matching centers, having raw edges even. Stitch upper, front, and lower edges, continuing along stitching lines. Stitch armhole edges, leaving open from 3"(7.6cm) below upper edges, as shown. Trim.



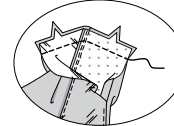
35. **UNDERSTITCH** facing as far as possible.



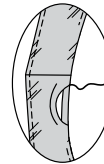
36. Turn, pulling garment through one front shoulder. Press.



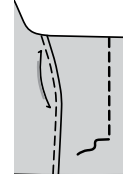
37. Open out lining at shoulders. Pin shoulder lining edges together; pin shoulder edges together. Stitch in one continuous seam.



38. Turn down lining, turning in remainder of seam allowances on armhole edges, as shown. Press. **SLIPSTITCH** armhole edges.

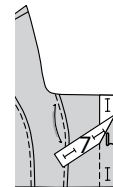


39. **TOPSTITCH** front 1"(2.5cm) from front edges.

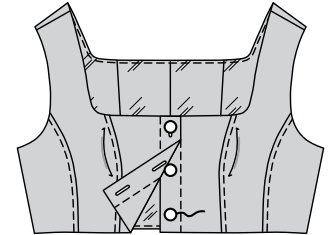


VIEWS A, C:

40. Place **GUIDE FOR BUTTONHOLES** (7) on **RIGHT** front, having edges of tissue even with finished edges of top, as shown. Transfer markings. Make buttonholes at markings.

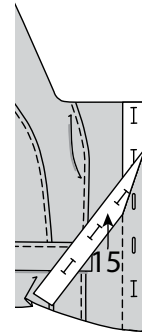


41. Lap opening edges, as shown, matching centers. Using buttonholes as guides, make button markings on **LEFT** front. Sew buttons at markings.

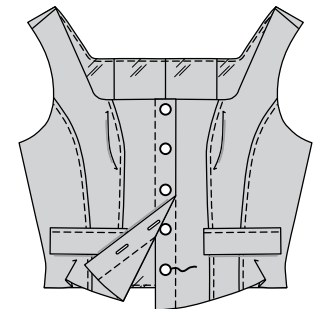


VIEW B:

42. Place **GUIDE FOR BUTTONHOLES** (15) on **RIGHT** front, having edges of tissue even with finished edges of top, as shown. Transfer markings. Make buttonholes at markings.



43. Lap opening edges, as shown, matching centers. Using buttonholes as guides, make button markings on **LEFT** front. Sew buttons at markings.





Congrats!

You've completed your sewing adventure

**SHARE
YOUR** LOOK



Post your pattern and tag us
[@simplicity_creative_group](#) and [#simplicitypatterns](#)
for a chance to be featured on our social media.

Look for more PDF patterns at [simplicity.com](https://www.simplicity.com)

Have a question or need help with your sewing project call us at
1-800-782-0323

McCall's
by **design**_{group}

McCall's ©2024 a division of IG Design Group Americas Inc. • Atlanta, GA 30342 USA www.thedesigngroup.com • All Rights Reserved. www.mccall.com • Made in the U.S.A. Fabriqué aux États-Unis.

To be used for individual private home use only and not for commercial or manufacturing purposes. • A usage privé seulement et non à des fins commerciales ou de production en série. • Para uso privado solamente, no se puede utilizar con propósitos de comercialización o de producción en serie.