

**McCall's**

**M8477**



Designed and printed in USA

Average

**MISSES' SHIRTDRESSES**

**Suggested Fabrics:** Cotton Blends, Gauze, Lawn, Lightweight Linen. **Interfacing:** Lightweight Fusible.

**Notions:** A, B, C: 8" (20cm) length of 1/2" (1.3cm) twill tape. **Also for A:** Eight 3/8" (1.5cm) buttons, one pkg. of 1/2" (1.3cm) single fold bias tape. **Also for B, C:** Ten 3/8" (1.5cm) buttons.

<b>Sizes</b>	8	10	12	14	16	18	20	22	24	26
<b>European</b>	34	36	38	40	42	44	46	48	50	52

**BODY MEASUREMENTS: Select pattern size based on body measurements**

<b>Bust</b>	31½	32½	34	36	38	40	42	44	46	48	Ins.
<b>Waist</b>	24	25	26½	28	30	32	34	37	39	41	"
<b>Hip-9" below waist</b>	33½	34½	36	38	40	42	44	46	48	50	"
<b>Back-neck to waist</b>	15¾	16	16¼	16½	16¾	17	17¼	17½	17¾	18	"

<b>Dress A</b>	45**	3	3	3	3½	3½	3¾	3¾	3½	3¾	3¾	Yds.
	60**	2½	2½	2¾	2¾	2¾	2¾	2¾	2½	2¾	2¾	"
<b>Interfacing</b>	20" - 1¼ yds.											

<b>Dress and Sash B</b>	45**	5¼	5½	5½	6	6	6¼	6½	6½	6¾	6¾	Yds.
	60**	4¼	4¾	4¾	4¾	4¾	4¾	4¾	4¾	4¾	4¾	"
<b>Interfacing</b>	20" - 1½ yds.											

<b>Dress and Sash C</b>	45**	5¼	5½	6	6½	6½	6½	6¾	6¾	7	7¼	Yds.
	60**	4½	4¾	4¾	4¾	4¾	4¾	5	5	5½	5½	"
<b>Interfacing</b>	20" - 1½ yds.											

**FINISHED GARMENT MEASUREMENTS (Includes Design and Wearing Ease)**

<b>A, B, C Bust</b>	37	38	39½	41½	43½	45½	47½	49½	51½	53½	Ins.
<b>A, B, C Waist</b>	26	27	28½	30½	32½	34½	36½	38½	40½	42½	"
<b>Width, lower edge</b>											
<b>Dress A</b>	77	78	79½	81½	83½	85½	87½	89½	91½	93½	Ins.
<b>Dress B, C</b>	83	84	85½	87½	89½	91½	93½	95½	97½	99½	"
<b>Finished back length from base of neck</b>											
<b>Dress A</b>	35¾	36	36¼	36½	36¾	37	37¼	37½	37¾	38	Ins.
<b>Dress B, C (incl. band)</b>	47¾	48	48¼	48½	48¾	49	49¼	49½	49¾	50	"

\*with nap \*\*without nap

Moins Facile

**ROBES CHEMISIER POUR JEUNES FEMMES**

**Tissus Conseillés:** Cotonnades, Gaze, Linon, Toile de lin fin. **Entoilage:** thermocollant léger.

**Mercrierie:** A, B, C: 20cm de talonnette de coton de 1.3cm. **Aussi pour A:** 8 boutons de 1.5cm, paquet de ruban de biais simple de 1.3cm. **Aussi pour B, C:** 10 boutons de 1.5cm.

<b>Tailles</b>	8	10	12	14	16	18	20	22	24	26
<b>Françaises</b>	36	38	40	42	44	46	48	50	52	54
<b>Européen</b>	34	36	38	40	42	44	46	48	50	52

**MESURES DU CORPS: Choisissez la taille du patron basée sur les mesures du corps**

<b>Poitrine</b>	80	83	87	92	97	102	107	112	117	122	cm
<b>Taille</b>	61	64	67	71	76	81	87	94	99	104	"
<b>Hanches (23cm au-dessous de la taille)</b>											
	85	88	92	97	102	107	112	117	122	127	cm

**Dos du cou à la taille**

<b>Robe A</b>	115cm*	2.7	2.7	2.7	2.7	2.9	3.0	3.1	3.2	3.3	3.3	m
	150cm*	1.9	1.9	2.1	2.1	2.1	2.1	2.1	2.3	2.4	2.4	"
<b>Entoilage</b>	51cm - 1.1m											

<b>Robe et ceinture-écharpe B</b>	115cm*	4.8	5.3	5.4	5.5	5.5	5.7	5.8	5.9	6.1	6.2	m
	150cm*	3.9	4.0	4.0	4.1	4.1	4.2	4.2	4.3	4.5	4.5	"
<b>Entoilage</b>	51cm - 1.4m											

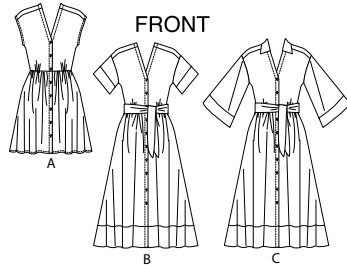
<b>Robe et ceinture-écharpe C</b>	115cm*	4.7	5.3	5.5	5.6	5.8	5.9	6.1	6.3	6.4	6.6	m
	150cm*	4.1	4.1	4.2	4.3	4.3	4.5	4.6	4.6	4.7	4.7	"
<b>Entoilage</b>	51cm - 1.4m											

**MESURES DES VÊTEMENTS FINI (Motif et aisance de port compris)**

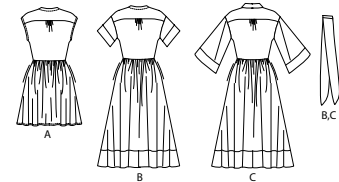
<b>A, B, C Poitrine</b>	94	97	100	105	110	116	121	126	131	136	cm
<b>A, B, C Taille</b>	66	69	72	77	83	88	93	98	103	108	"
<b>Largeur à l'ourlet</b>											
<b>Robe A</b>	196	198	202	207	212	217	222	227	232	237	cm
<b>Robe B, C</b>	211	213	217	222	227	232	237	243	248	253	"
<b>Longueur finie - dos, votre nuque à l'ourlet</b>											
<b>Robe A</b>	91	91	92	93	93	94	95	95	96	97	cm
<b>Robe B, C (y compris la bande)</b>	121	122	123	123	124	124	125	126	126	127	"

\*avec sens \*\*sans sens



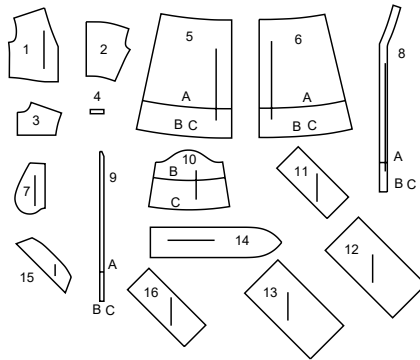


FRONT



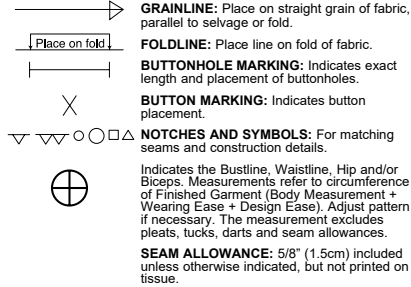
BACK

16 PATTERN PIECES



- 1 BODICE FRONT - A,B,C
- 2 BODICE BACK - A,B,C
- 3 BACK YOKE - A,B,C
- 4 GUIDE FOR GATHERS - A,B,C
- 5 SKIRT FRONT - A,B,C
- 6 SKIRT BACK - A,B,C
- 7 POCKET - A,B,C
- 8 FRONT FACING - A,B,C
- 9 GUIDE FOR BUTTONHOLES - A,B,C
- 10 SLEEVE - B,C
- 11 SLEEVE BAND - B
- 12 LOWER FRONT BAND - B,C
- 13 LOWER BACK BAND - B,C
- 14 SASH - B,C
- 15 COLLAR - C
- 16 SLEEVE BAND - C

PATTERN MARKINGS



ADJUST IF NECESSARY

Lengthen or Shorten at adjustment lines (==) or where indicated on pattern. If substantial length is added, you may need to purchase additional fabric.

**TO SHORTEN:** Crease along adjustment line. Make a fold half the amount needed. Tape in place.

**TO LENGTHEN:** Slash between adjustment lines. Spread amount as needed, keeping edges parallel. Tape over paper.

When Alteration lines are not on tissue, lengthen or shorten at lower edge.

CUTTING AND MARKING

**SHRINK FABRIC** if not labeled pre-shrunk. Press.

**CIRCLE LAYOUT** for View, Size, Fabric Width.

Use **WITH NAP** layout for fabrics with one-way designs, nap, pile or surface shading. Because most knits have surface shading, a with nap layout is used.

For **DOUBLE THICKNESS (WITH FOLD)** - fold fabric with right sides together.

**\* DOUBLE THICKNESS (WITHOUT FOLD)** - For fabrics with nap, fold fabric crosswise, right sides together. Mark as shown. Cut along crosswise fold of fabric (A). Turn upper layer 180° so arrows go in same direction and place over lower layer, right sides together (B).

For **SINGLE THICKNESS** - place fabric right side up. (For Fur Pile fabrics, place pile side down.)

★ Cut other pieces first, allowing enough fabric to cut this piece. Open fabric. For "Cut 1" pieces, cut piece once on single layer of fabric with piece face up on right side of fabric.

Pattern may have cutting lines for several sizes. Select the proper cutting line or pattern pieces for your size.

Before **CUTTING** place all pieces on fabric according to layout. Pin. (Layouts show approximate position of pattern pieces; position may vary according to your pattern size.) Cut **ACCURATELY**, cutting notches outward.

Before removing pattern, **TRANSFER MARKINGS** and lines of construction to Wrong Side of fabric, using the Pin and Chalk Pencil method or Tracing Paper and Dressmaker Wheel. Markings needed on right side of fabric should be thread traced.

**NOTE:** Broken-line boxes (a! b! c!) in layouts represent pieces cut by measurements provided.

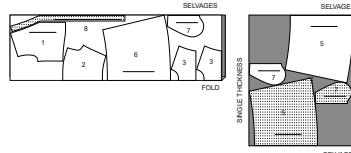
CUTTING LAYOUTS

RIGHT SIDE OF PATTERN	WRONG SIDE OF PATTERN	RIGHT SIDE OF FABRIC	WRONG SIDE OF FABRIC
-----------------------	-----------------------	----------------------	----------------------

DRESS A

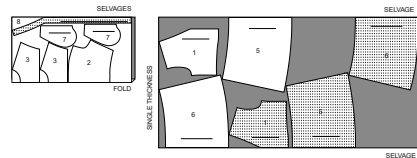
PIECES 1 2 3 5 6 7 8

45" (115CM)  
WITH NAP  
SIZES 8 10 12 14 16



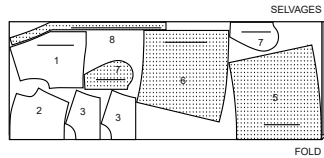
45" (115CM)  
WITH NAP

SIZES 18 20 22 24 26



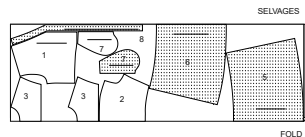
60" (150CM)  
WITH NAP

SIZES 8 10 12 14 16 18 20



60" (150CM)  
WITH NAP

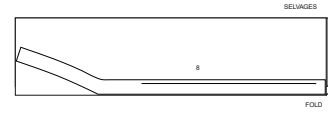
SIZES 22 24 26



INTERFACING

PIECE 8

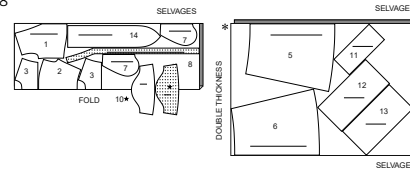
20" (51CM)  
ALL SIZES



DRESS AND SASH B

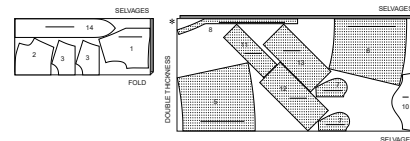
PIECES 1 2 3 5 6 7 8 10 11 12 13 14

45" (115CM)  
WITH NAP  
SIZE 8



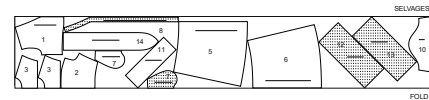
45" (115CM)  
WITH NAP

SIZES 10 12 14 16 18 20 22 24 26



60" (150CM)  
WITH NAP

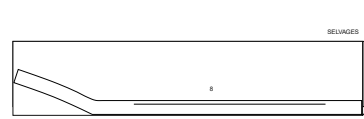
ALL SIZES



INTERFACING

PIECE 8

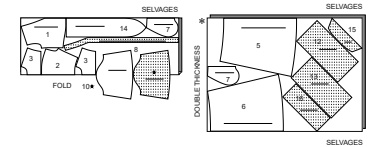
20" (51CM)  
ALL SIZES



DRESS AND SASH C

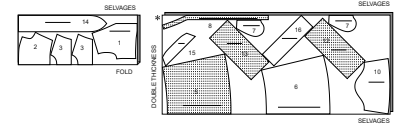
PIECES 1 2 3 5 6 7 8 10 12 13 14 15 16

45" (115CM)  
WITH NAP  
SIZE 8



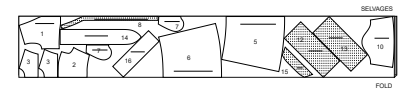
45" (115CM)  
WITH NAP

SIZES 10 12 14 16 18 20 22 24 26



60" (150CM)  
WITH NAP

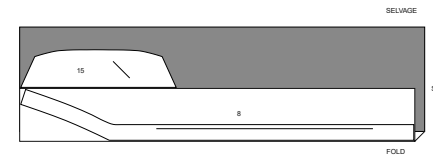
ALL SIZES



INTERFACING

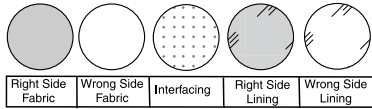
PIECES 8 15

20" (51CM)  
ALL SIZES



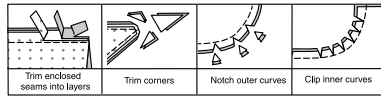
**SEWING INFORMATION**

**FABRIC KEY**



**SEAM ALLOWANCES**

Use 5/8" (1.5cm) seam allowances unless otherwise indicated.



**PIN AND FIT**

Pin or baste seams, **RIGHT SIDE TOGETHER**, matching notches. Fit garment before stitching major seams.

**PRESS**

Press seam allowances flat; then open unless otherwise stated. Clip where necessary so they lie flat.

**GLOSSARY**

Sewing methods in **BOLD TYPE** have Sewing Tutorial Video available. Scan QR CODE to watch videos:

**EASE/GATHER** - See **Gathering**: "sewing two row gathers" video.

**FINISH** - See **Seams**: "how to finish seam allowances" video.

**NARROW HEM** - See **Hems**: "sewing narrow hems" video.

**SLEEVE** - See **Armholes/Sleeves**: "sewing a set in sleeve" video.

**SLIPSTITCH** - See **Hand Stitching**: "how to slip stitch" video.

**STAYSTITCH** - See **Machine Stitches**: "how to do stay-stitching" video.

**UNDERSTITCH** - See **Machine Stitches**: "how to understitch" video.

SEWING TUTORIALS



Build your skills viewing short, easy-to-follow videos at [simplicity.com/sewingtutorials](http://simplicity.com/sewingtutorials)

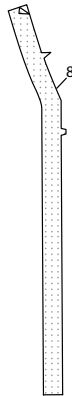
**PATTERN PIECES WILL BE IDENTIFIED BY NUMBERS THE FIRST TIME THEY ARE USED. STITCH SEAMS WITH RIGHT SIDES TOGETHER UNLESS OTHERWISE STATED.**

**NOTE:** Under each sub-heading, the first view will be illustrated, unless otherwise illustrated.

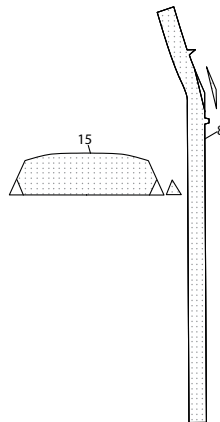
**DRESS A, B, C**

**INTERFACING**

**1. For Views A, B:** Fuse INTERFACING to wrong side of each matching FABRIC section, following manufacturer's instructions.

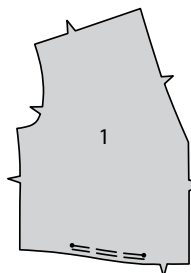


**2. For View C:** Trim corners of INTERFACING, as shown. Fuse interfacing to wrong side of each matching FABRIC section, following manufacturer's instructions.



**BODICE FRONT AND BACK**

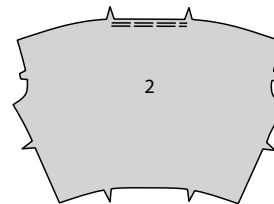
**3. GATHER** lower edge of BODICE FRONT (1) between dots.



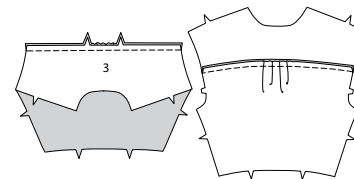
**4.** Cut two sections of twill tape using GUIDE FOR GATHERS (4). With wrong sides together, pin one tape section to lower edge of each bodice front, matching dots, centering over gathers. Adjust gathers to fit tape. Baste through center of tape between dots, through all thicknesses. Stitch along basting.



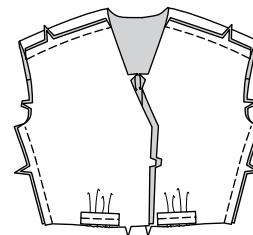
**5. GATHER** upper edge of BODICE BACK (2) between notches.



**6.** With right sides together, pin one BACK YOKE (3) section to upper edge of bodice back, matching notches and centers. Adjust gathers; baste. Stitch. Press seam toward yoke. (Remaining back yoke section will be used as facing.)

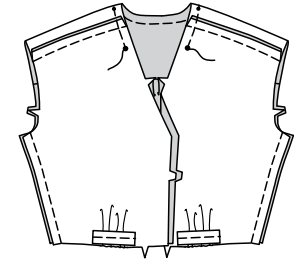


**7.** Stitch bodice back to bodice front at forward shoulder and side seams.

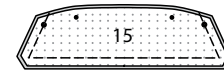


**COLLAR C**

**8. STAYSTITCH** bodice neck edge between large dots.



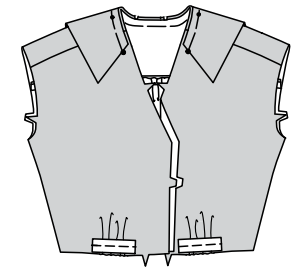
**9.** Pin COLLAR (15) sections right sides together, matching dots. Stitch unnotched edge; trim seams.



**10.** Turn right side out; press. Baste raw edges together, matching dots.



**11.** Pin interfaced side of collar to bodice neck edge, matching center backs and dots, clipping bodice neck edge where necessary. Baste.

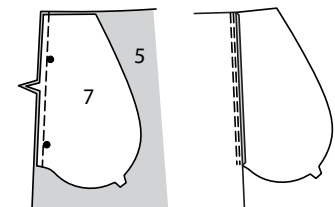


**SKIRT**

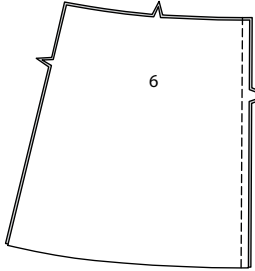
**POCKETS**

Apply pockets to side edges of skirt front and skirt back as follows:

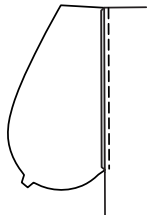
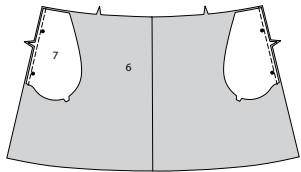
**12.** With right sides together, pin one POKET (7) section to each SKIRT FRONT (5) section at side seam, matching dots, having raw edges even. Stitch in 3/8" (1cm) seam. **UNDERSTITCH** pocket. Press seam toward pocket, pressing pocket out.



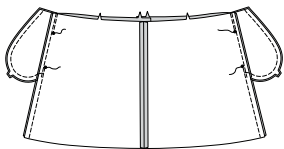
13. Stitch center seam of SKIRT BACK (6).



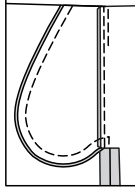
14. Stitch one POCKET section to skirt back at each side seam, matching dots, having raw edges even. Stitch in 3/8" (1cm) seam. Press seams toward pockets, pressing pockets out.



15. Pin back to front at side seams, right sides together, matching large dots. Stitch side seams, leaving an opening between large dots. Stitch pocket edges together from side seam to upper edge.



16. Clip skirt back seam allowance to stitching at lower end of pocket. Press seam open below clip. Press pocket toward front.

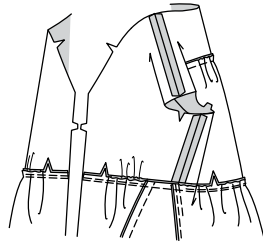


ATTACH SKIRT TO BODICE

17. GATHER upper edge of skirt between notches on front, keeping pockets free.

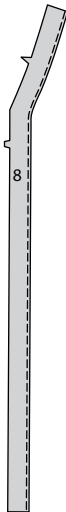


18. Pin skirt to bodice, right sides together, matching notches, centers and side seams, keeping pockets free. Adjust gathers. Pin pockets in place over gathers. Baste. Stitch. Stitch again 1/4" (6mm) away in seam allowances. Trim close to second stitching. Turn seam allowances toward bodice.

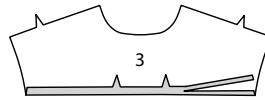


FRONT AND BACK FACINGS

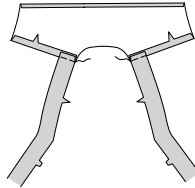
19. FINISH long unnotched edge of FRONT FACING (8).



20. Press under 5/8" (1.5cm) on lower edge of back yoke FACING (3). Trim pressed edge to 3/8" (1cm).

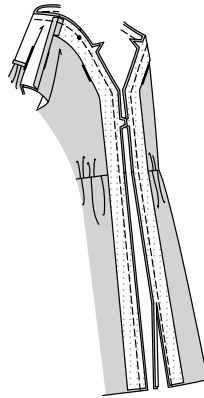


21. Stitch back yoke facing to each front facing at forward shoulders, having neck edges even. Press seams toward yoke facing, continuing to press under 5/8" (1.5cm) on remainder of forward shoulder seam allowance on yoke facing.



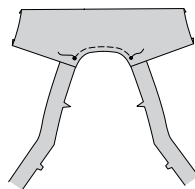
VIEWS A, B

22. Pin facing to dress, right sides together, matching notches, center backs, large dots and seams. Stitch front and neck edges. Trim seams.

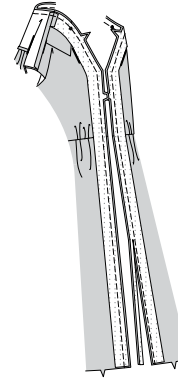


VIEW C

23. STAYSTITCH neck edge of facing between large dots.

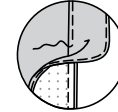


24. Pin facing to dress, right sides together, matching notches, center backs, large dots and seams. Stitch front and neck edges, clipping facing neck edge where necessary. Trim seams.

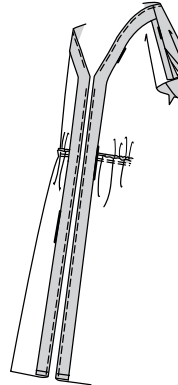


VIEWS A, B, C

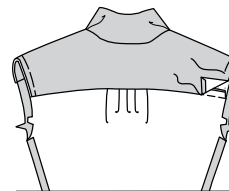
25. UNDERSTITCH front facing as far as possible.



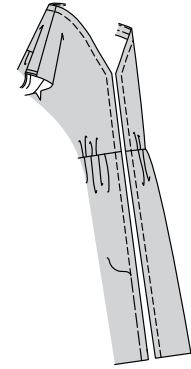
26. Turn facings to inside; press. Baste front facing to lower edge of dress.



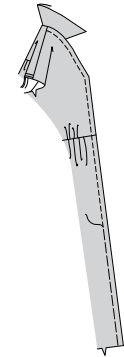
27. SLIPSTITCH pressed edges of back yoke facing over seams. Baste armhole edges together.



28. For Views A, B: Baste 1" (2.5cm) from finished front and neck edges. Stitch along basting.

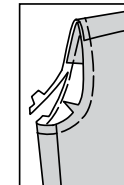


29. For View C: Baste 1" (2.5cm) from finished front edges, keeping back and collar free. Stitch along basting.

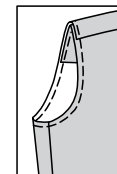


ARMHOLE FINISH A

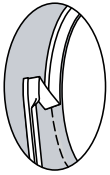
30. Baste armhole 3/4" (2cm) from raw edge. Trim away armhole raw edge 1/2" (1.3cm) from basting.



31. To prevent armhole edge from stretching, stitch 1/4" (6mm) from raw edge.



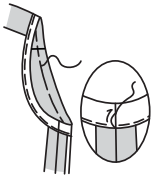
32. Open out one folded edge of bias tape. Press out crease and preshape tape to match curve of armhole edge by pressing lightly.



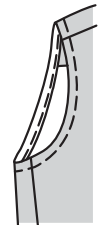
33. Pin bias tape to armhole edge, having raw edges even, turning under ends to meet at underarm seam. Stitch in a 3/8" (1cm) seam allowance. Trim seam allowance to a scant 1/4" (6mm).



34. Turn bias tape to inside along seam; press. Baste in place. SLIPSTITCH ends.

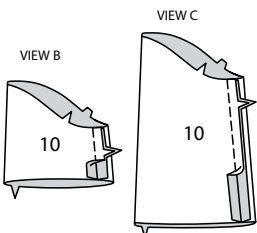


35. On outside, stitch close to basted edge.

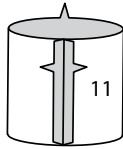


SLEEVE B, C

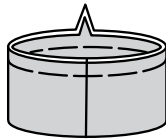
36. Stitch seam of SLEEVE (10).



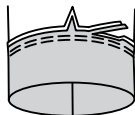
37. Stitch seam of each SLEEVE BAND (11) or (16) section, matching notches.



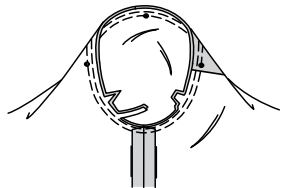
38. Fold band on foldline, wrong sides together, matching notches and seams. Press lightly. Baste raw edges together.



39. On outside, pin band to lower edge of sleeve, matching notches and seam to underarm seam. Stitch. Stitch again 1/4" (6mm) away in seam allowances. Trim close to second stitching. Press seam upward, turning band down.



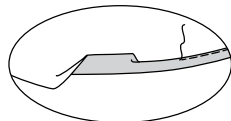
40. With RIGHT sides together, pin sleeve into armhole, matching, notches, dots and underarm seams; baste. Stitch. Stitch again 1/4" (6mm) away in seam allowance. Trim close to second stitching. Turn seam allowances toward sleeve.



FINISHING

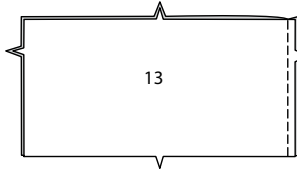
HEM A

41. Press up 5/8" (1.5cm) hem on lower edge of dress. To form NARROW HEM, tuck under raw edge to meet crease; press. Stitch hem in place.

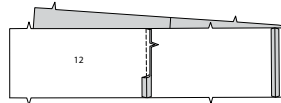


LOWER BAND B, C

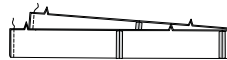
42. Pin LOWER BACK BAND (13) sections, right sides together, matching notches. Stitch center back seam.



43. Stitch each LOWER FRONT BAND (12) section to lower back band at sides, matching notches.



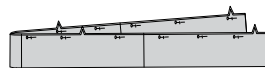
44. Fold front band on foldline, right sides together. Stitch front edges. Trim seams.



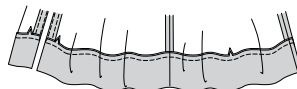
45. Turn front band right side out; press.



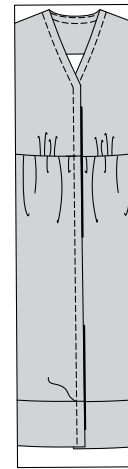
46. Fold band on foldline, wrong sides together, matching notches and seams. Press lightly. Pin raw edges together.



47. On outside, pin band to lower edge of dress, matching notches, centers and seams. Stitch. Stitch again 1/4" (6mm) away in seam allowances. Trim close to second stitching. Press seams upward, turning band down.

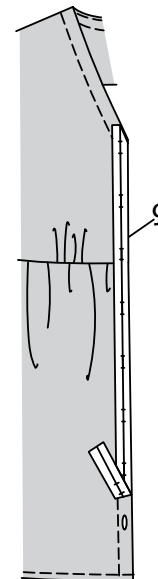


48. Topstitch front band 1" (2.5cm) from front edges, connecting with skirt stitching.

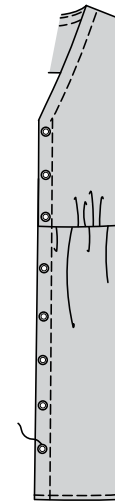


BUTTONHOLES AND BUTTONS

49. Place GUIDE FOR BUTTONHOLES (9) on right front, having edges of tissue even with finished edges of dress, matching centers, as shown. Transfer markings. Make buttonholes at markings.

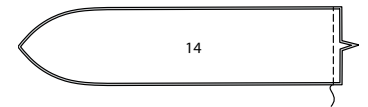


50. Lap right front over left, matching centers. Using buttonholes as guides, make button markings on left front. Sew buttons at markings.

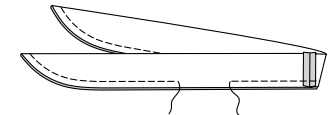


SASH B, C

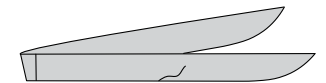
51. Stitch SASH (14) sections, right sides together along notched edge.



52. Fold sash in half lengthwise, right sides together. Stitch, leaving an opening for turning; trim seams.



53. Turn right side out; press. SLIPSTITCH opening edges together.





# Congrats!

You've completed your sewing adventure

---

**SHARE  
YOUR** LOOK



Post your pattern and tag us  
[@simplicity\\_creative\\_group](#) and [#simplicitypatterns](#)  
for a chance to be featured on our social media.

Look for more PDF patterns at [simplicity.com](https://www.simplicity.com)

Have a question or need help with your sewing project call us at  
1-800-782-0323

**McCall's**  
by **design**<sup>sm</sup>

McCall's ©2024 a division of IG Design Group Americas Inc. • Atlanta, GA 30342 USA [www.thedesigngroup.com](http://www.thedesigngroup.com) • All Rights Reserved. [www.mccall.com](http://www.mccall.com) • Made in the U.S.A. Fabriqué aux États-Unis.

To be used for individual private home use only and not for commercial or manufacturing purposes. • A usage privé seulement et non à des fins commerciales ou de production en série. • Para uso privado solamente, no se puede utilizar con propósitos de comercialización o de producción en serie.