

**McCall's**

**M8476**



Designed and printed in USA

Easy

Facile

**MISSES' DRESSES**

**Suggested Fabrics: Dress Bodice** in Stretch Knits only such as: Cotton Knit, Jerseys, Interlock. See Stretch Gauge. **Contrast (Skirt)** in Cotton Blends, Poplin, Sateen.

**Notions: A:** 2½ yds. (2.4m) of ¾" (1cm) elastic. **B,C:** 1¼ yds. (1.1m) of ¾" (1cm) elastic.

Sizes	6	8	10	12	14	16	18	20	22	24
European	32	34	36	38	40	42	44	46	48	50

**BODY MEASUREMENTS: Select pattern size based on body measurements**

<b>Bust</b>	30½	31½	32½	34	36	38	40	42	44	46	Ins.
<b>Waist</b>	23	24	25	26½	28	30	32	34	37	39	"
<b>Hip-9" below waist</b>	32½	33½	34½	36	38	40	42	44	46	48	"
<b>Back-neck to waist</b>	15½	15¾	16	16¼	16½	16¾	17	17¼	17½	17¾	"

<b>Dress A</b>	60**	¾	¾	¾	¾	¾	¾	¾	¾	¾	¾	Yds.
<b>Contrast (Skirt)</b>	60**	2¾	2¾	2¾	2¾	2½	2½	2½	2½	2½	2½	"
<b>Dress B</b>	60**	1½	1½	1½	1¼	1¼	1¼	1¼	1¼	1¼	1¼	Yds.
<b>Contrast (Skirt)</b>	60**	3½	3½	3½	3½	3½	3½	3½	3½	3½	3½	"
<b>Dress C</b>	60**	1½	1½	1½	1½	1½	1½	1½	1¼	1¼	Yds.	
<b>Contrast (Skirt)</b>	60**	2½	2½	2½	2½	2½	2½	2½	2½	2½	2½	"

**FINISHED GARMENT MEASUREMENTS (Includes Design and Wearing Ease)**

<b>A,B,C Bust</b>	31½	32½	33½	35	37	39	41	43	45	47	Ins.
<b>A,B,C Waist</b>	29½	30½	31½	33	35	37	39	41	43	45	"
<b>Width, lower edge</b>											
<b>Dress A,C</b>	72	73	74	75½	77½	79½	81½	83½	85½	87½	Ins.
<b>Dress B</b>	67	68	69	70½	72½	74½	76½	78½	80½	82½	"
<b>Finished back length from base of neck</b>											
<b>Dress A,B,C</b>	54½	54¾	55	55¼	55½	55¾	56	56¼	56½	56¾	Ins.

\*with nap \*\*without nap

**ROBES POUR JEUNES FEMMES**

**Tissus Conseillés: Corsage de la robe** en tricot extensibles seulement tels que: Tricot de coton, Tricot de jerseys, Interlock. Reportez-vous au taux d'élasticité. **Contraste (Jupe)** en Cotonnades, Popeline, Satin de coton.

**Mercrierie: A:** 2.4m d'élastique de 1cm. **B,C:** 1.1m d'élastique de 1cm.

Tailles	6	8	10	12	14	16	18	20	22	24
Françaises	34	36	38	40	42	44	46	48	50	52
Européen	32	34	36	38	40	42	44	46	48	50

**MESURES DU CORPS: Choisissez la taille du patron basée sur les mesures du corps**

<b>Poitrine</b>	78	80	83	87	92	97	102	107	112	117	cm
<b>Taille</b>	58	61	64	67	71	76	81	87	94	99	"
<b>Hanches (23cm au-dessous de la taille)</b>											
	83	85	88	92	97	102	107	112	117	122	cm
<b>Dos du cou à la taille</b>	39.5	40	40.5	41.5	42	42.5	43	44	44.5	45	"

<b>Robe A</b>	150cm*	0.6	0.6	0.6	0.6	0.7	0.7	0.7	0.7	0.7	0.7	m
<b>Contraste (Jupe)</b>	150cm*	2.2	2.2	2.2	2.2	2.2	2.2	2.2	2.2	2.2	2.2	"
<b>Robe B</b>	150cm*	1.0	1.0	1.0	1.0	1.1	1.1	1.1	1.1	1.1	1.1	m
<b>Contraste (Jupe)</b>	150cm*	2.7	2.7	2.7	2.7	2.9	2.9	2.9	2.9	2.9	2.9	"
<b>Robe C</b>	150cm*	0.9	1.0	1.0	1.0	1.0	1.0	1.0	1.0	1.1	1.1	m
<b>Contraste (Jupe)</b>	150cm*	2.3	2.3	2.3	2.3	2.3	2.3	2.3	2.3	2.3	2.3	"

**MESURES DES VÊTEMENTS FINI (Motif et aisance de port compris)**

<b>A,B,C Poitrine</b>	80	83	85	89	94	99	104	109	114	119	cm
<b>A,B,C Taille</b>	75	77	80	84	89	94	99	104	109	114	"
<b>Largeur à l'ourlet</b>											
<b>Robe A,C</b>	183	185	188	192	197	202	207	212	217	222	cm
<b>Robe B</b>	170	173	175	179	184	189	194	199	204	210	"
<b>Longueur finie – dos, votre nuque à l'ourlet</b>											
<b>Robe A,B,C</b>	138	139	140	140	141	142	142	143	144	144	cm

\*avec sens \*\*sans sens



Use the 1 inch (2.54cm) box to ensure you are using rule at 100%

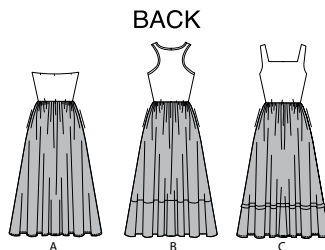
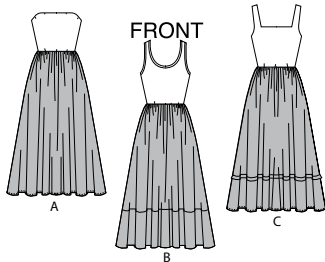
Utilisez la boîte de 2.54 cm pour vous assurer d'utiliser la règle à 100%.

Utilizar un cuadrado de 2.54 cm para asegurarse de estar usando la regla al 100%.

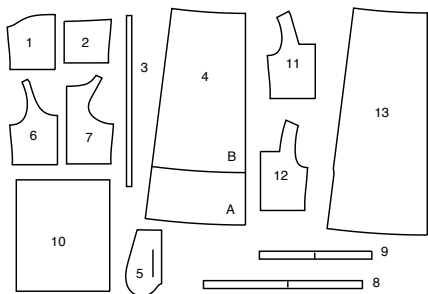
**4" of crosswise folded fabric must STRETCH from here**  
**10 cm de tricot plié sur le travers et sur le droit-fil doivent s'étirer de cette limite à celle là**  
**10 cm de tejido de punto doblado (a lo largo y luego al través) deben estirarse desde acá**

**To Here 50%**  
**jusqu'ici 50%**  
**hasta acá 50%**

When using the Pick-A-Knit® rule to measure your fabrics stretch capacity, rule must be viewed or printed at 100%.  
 Quand vous utilisez le taux d'élasticité pour mesurer la capacité d'élasticité des tissus, le taux doit être visible ou imprimé à 100%.  
 Al utilizar el calibre de elasticidad para medir la capacidad de elasticidad de las telas, el calibre debe estar visible o impreso al 100%.



13 PATTERN PIECES



- 1 Bodice Front-A
- 2 Bodice Back-A
- 3 Elastic Guide for Upper Edge-A
- 4 Skirt Front and Back-A,B
- 5 Pocket-A,B,C
- 6 Bodice Front-B
- 7 Bodice Back-B
- 8 Neckband-B
- 9 Armhole Band-B
- 10 Lower Band-B
- 11 Bodice Front-C
- 12 Bodice Back-C
- 13 Skirt Front and Back-C

PATTERN MARKINGS

**GRAINLINE:** Place on straight grain of fabric, parallel to selvage or fold.

**FOLDLINE:** Place line on fold of fabric.

**BUTTONHOLE MARKING:** Indicates exact length and placement of buttonholes.

**BUTTON MARKING:** Indicates button placement.

**NOTCHES AND SYMBOLS:** For matching seams and construction details.

Indicates the Bustline, Waistline, Hip and/or Biceps. Measurements refer to circumference of Finished Garment (Body Measurement + Wearing Ease + Design Ease). Adjust pattern if necessary. The measurement excludes pleats, tucks, darts and seam allowances.

**SEAM ALLOWANCE:** 5/8" (1.5cm) included unless otherwise indicated, but not printed on tissue.

ADJUST IF NECESSARY

Lengthen or Shorten at adjustment lines (==) or where indicated on pattern. If substantial length is added, you may need to purchase additional fabric.

**TO SHORTEN:** Crease along adjustment line. Make a fold half the amount needed. Tape in place.

**TO LENGTHEN:** Slash between adjustment lines. Spread amount as needed, keeping edges parallel. Tape over paper.

When Alteration lines are not on tissue, lengthen or shorten at lower edge.

CUTTING AND MARKING

**SHRINK FABRIC** if not labeled pre-shrunk. Press.

**CIRCLE LAYOUT** for View, Size, Fabric Width.

Use **WITH NAP** layout for fabrics with one-way designs, nap, pile or surface shading. Because most knits have surface shading, a with nap layout is used.

For **DOUBLE THICKNESS (WITH FOLD)** - fold fabric with right sides together.

**\* DOUBLE THICKNESS (WITHOUT FOLD)** - For fabrics with nap, fold fabric crosswise, right sides together. Mark as shown. Cut along crosswise fold of fabric (A). Turn upper layer 180° so arrows go in same direction and place over lower layer, right sides together (B).

For **SINGLE THICKNESS** - place fabric right side up. (For Fur Pile fabrics, place pile side down.)

★ Cut other pieces first, allowing enough fabric to cut this piece. Open fabric. For "Cut 1" pieces, cut piece once on single layer of fabric with piece face up on right side of fabric.

Pattern may have cutting lines for several sizes. Select the proper cutting line or pattern pieces for your size.

Before **CUTTING** place all pieces on fabric according to layout. Pin. (Layouts show approximate position of pattern pieces; position may vary according to your pattern size.) Cut **ACCURATELY**, cutting notches outward.

Before removing pattern, **TRANSFER MARKINGS** and lines of construction to Wrong Side of fabric, using the Pin and Chalk Pencil method or Tracing Paper and Dressmaker Wheel. Markings needed on right side of fabric should be thread traced.

**NOTE:** Broken-line boxes (a| b| c|) in layouts represent pieces cut by measurements provided.

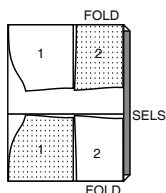
CUTTING LAYOUTS

RIGHT SIDE OF PATTERN	WRONG SIDE OF PATTERN	RIGHT SIDE OF FABRIC	WRONG SIDE OF FABRIC
-----------------------	-----------------------	----------------------	----------------------

DRESS A

use pieces: 1 2

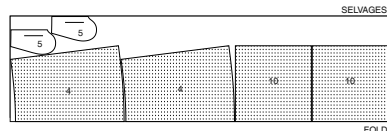
60" (150cm) with nap all sizes



CONTRAST B (SKIRT)

use pieces: 4 5 10

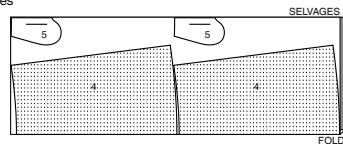
60" (150cm) with nap all sizes



CONTRAST A (SKIRT)

use pieces: 4 5

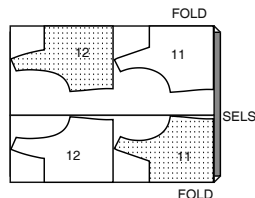
60" (150cm) with nap all sizes



DRESS C

use pieces: 11 12

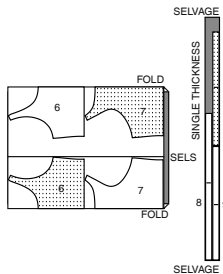
60" (150cm) with nap all sizes



DRESS B

use pieces: 6 7 8 9

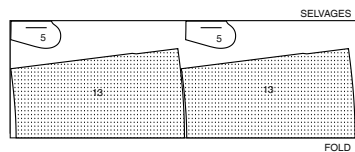
60" (150cm) with nap all sizes



CONTRAST C (SKIRT)

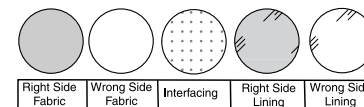
use pieces: 5 13

60" (150cm) with nap all sizes



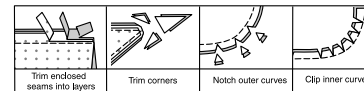
SEWING INFORMATION

FABRIC KEY



SEAM ALLOWANCES

Use 5/8" (1.3cm) seam allowances unless otherwise indicated.



PIN AND FIT

Pin or baste seams, **RIGHT SIDE TOGETHER**, matching notches. Fit garment before stitching major seams.

PRESS

Press seam allowances flat; then open unless otherwise stated. Clip where necessary so they lie flat.

GLOSSARY

Sewing methods in **BOLD TYPE** have Sewing Tutorial Video available. Scan **QR CODE** to watch videos:

**EASE/GATHER** - See **Gathering**: "sewing two row gathers" video.

**EDGESTITCH** - See **Machine Stitches**: "how to edgestitch" video.

**NARROW HEM** - See **Hems**: "sewing narrow hems" video.

**STAYSTITCH** - See **Machine Stitches**: "how to do stay-stitching" video.

**SLIPSTITCH** - See **Hand Stitching**: "how to slipstitch" video.

**UNDERSTITCH** - See **Machine Stitches**: "how to understitch" video.

PATTERN PIECES WILL BE IDENTIFIED BY NUMBERS THE FIRST TIME THEY ARE USED.

STITCH SEAMS WITH RIGHT SIDES TOGETHER UNLESS OTHERWISE STATED.

SEWING TUTORIALS



Build your skills viewing short, easy-to-follow videos at [simplicity.com/sewingtutorials](http://simplicity.com/sewingtutorials)

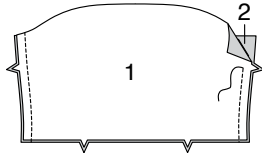
DRESS A, B, C

**NOTE:** Under each sub-heading, the first view will be illustrated, unless otherwise illustrated.

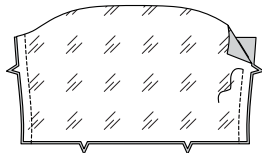
**NOTE:** For Knit Garments, use a zigzag or straight stitch, stretching fabric slightly while stitching.

BODICE A

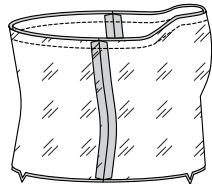
1. Stitch one BODICE FRONT (1) section to one BODICE BACK (2) section at sides. (Remaining bodice sections will be used as lining.)



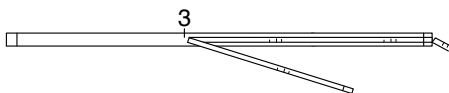
2. Stitch bodice front LINING (1) to bodice back LINING (2) at sides.



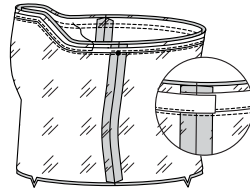
3. With right sides together, pin lining to bodice, matching centers and seams. Stitch upper edge.



4. Cut a piece of elastic using ELASTIC GUIDE FOR UPPER EDGE (3) pattern piece. Transfer markings.



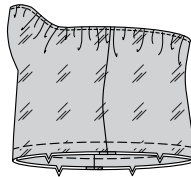
5. Pin elastic to upper seam allowance on bodice lining, placing lower edge along stitching, matching centers and dot to right side seam. Lap ends. Stitch close to lower edge of elastic, stretching to fit.



6. UNDERSTITCH lining, stitching through elastic.



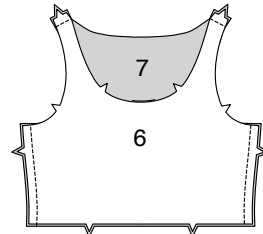
7. Turn lining to inside; press. Baste raw edges together.



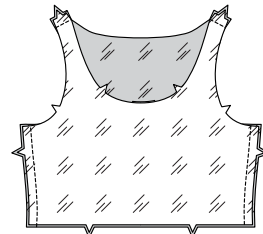
BODICE B

FRONT AND BACK

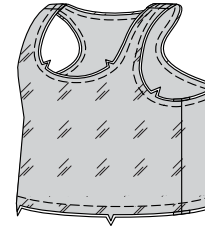
8. Stitch one BODICE FRONT (6) section to one BODICE BACK (7) section at shoulders and sides. (Remaining bodice sections will be used as lining.)



9. Stitch bodice front LINING (6) to bodice back LINING (7) at shoulders and sides.

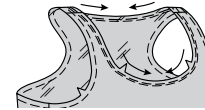


10. With wrong sides together, pin lining to bodice, matching centers and seams. Baste raw edges together.

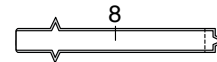


NECKBAND

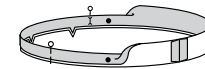
11. STAYSTITCH neck edge of bodice.



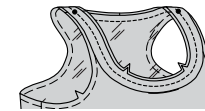
12. Pin NECKBAND (8), right sides together. Stitch ends.



13. With wrong sides together, fold neckband in half lengthwise, matching centers and dots; press lightly. Pin raw edges together.

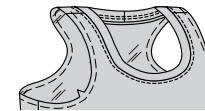


14. Pin neckband to bodice neck edge, matching notches, centers and dots to shoulder seams. Stitch in a 3/8" (1cm) seam, stretching band to fit.



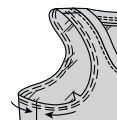
15. Press seams toward bodice, turning band up.

EDGESTITCH bodice neck edge.

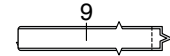


ARMHOLE BAND

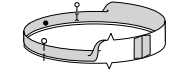
16. STAYSTITCH armhole edge of bodice.



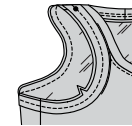
17. Pin ARMHOLE BAND (9), right sides together. Stitch ends.



18. With wrong sides together, fold neckband in half lengthwise, matching dots; press lightly. Pin raw edges together.

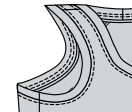


19. Pin armhole band to bodice armhole edge, matching notches, seam to side seam and dots to shoulder seams. Stitch in a 3/8" (1cm) seam, stretching band to fit.



20. Press seams toward bodice, turning band up.

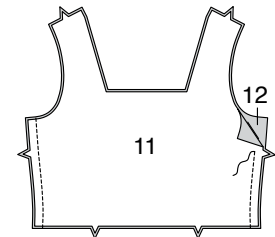
EDGESTITCH bodice armhole edge.



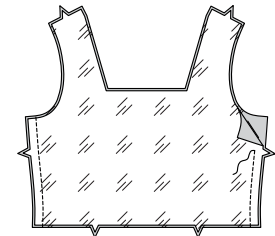
BODICE C

FRONT AND BACK

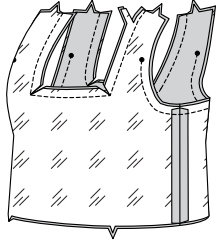
21. Stitch one BODICE FRONT (11) section to one BODICE BACK (12) section at sides. (Remaining bodice sections will be used as lining.)



22. Stitch bodice front LINING (11) to bodice back LINING (12) at sides.



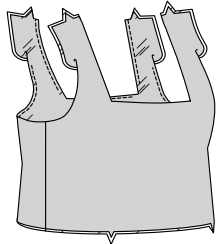
23. Pin lining to bodice, right sides together, matching centers, dots and seams. Stitch neck edge, continuing along stitching lines, pivoting at corners. Stitch armhole edges below small dots. Clip to corners. Trim seams.



24. UNDERSTITCH lining as far as possible.



25. Turn right side out; press.



26. Open out lining at shoulders. Pin bodice front to bodice back at shoulders; then pin lining edges together. Stitch in one continuous seam.

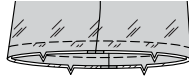


27. Turn lining down, turning in remainder of armhole edges along seamlines; press.

SLIPSTITCH pressed edges together.



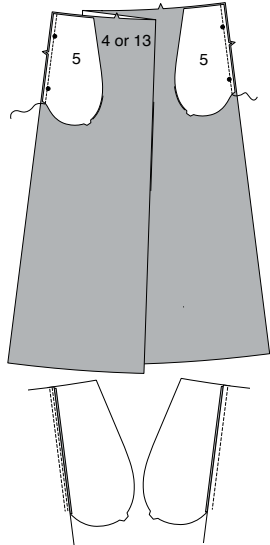
28. With wrong sides together, pin lining to bodice, matching centers and seams. Baste raw edges together.



SKIRT A, B, C

Apply pockets to side edges of skirt front and skirt back as follows:

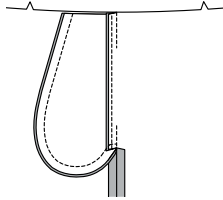
29. With right sides together, pin one POCKET (5) section to each SKIRT FRONT AND BACK (4) or (13) section at side seam, matching dots, having raw edges even. Stitch in 3/8" (1cm) seam. UNDERSTITCH the front pocket. Press seam toward pockets, pressing pockets out.



30. Pin back to front at side seams, right sides together, matching large dots. Stitch side seams, leaving an opening between large dots. Stitch pocket edges together from side seam to upper edge.

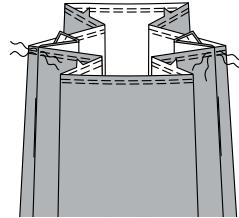


31. Clip skirt back seam allowance to stitching at lower end of pocket. Press seam open below clip. Press pocket toward front.

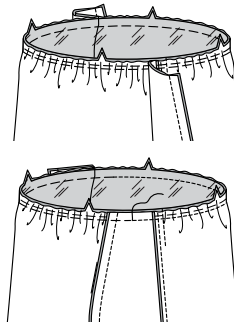


ATTACHING SKIRT TO BODICE

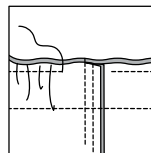
32. GATHER upper edge of skirt, keeping pockets free.



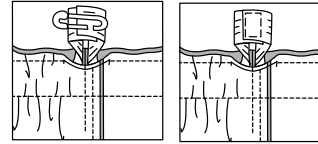
33. Pin skirt to bodice, right sides together, matching notches, centers and side seams, keeping pockets free. Adjust gathers. Pin pockets in place over gathers. Baste; stitch.



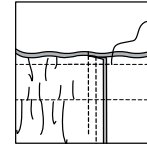
34. To form casing for elastic, stitch waist seam allowances together 1/4" (6mm) from raw edge, leaving an opening and keeping dress free.



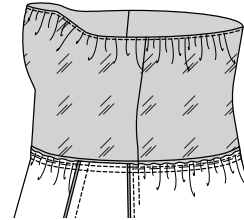
35. Cut elastic a comfortable waist measurement, plus 1" (2.5cm). Insert elastic through opening in casing. Lap ends. Hold with safety pin. Try on and adjust if necessary. Stitch ends of elastic securely.



36. Stitch opening in casing, stretching elastic while stitching.



37. Turn seam allowances toward bodice.



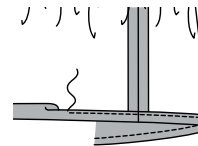
FINISHING

HEM A, C

38. Press up 5/8" (1.5cm) hem on lower edge of dress.

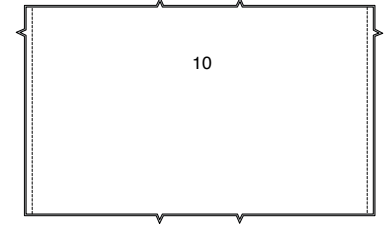
To form NARROW HEM, tuck under raw edge to meet crease; press.

Stitch hem in place.

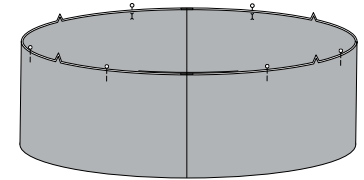


LOWER BAND B

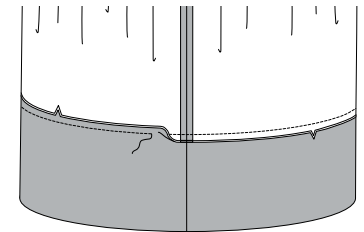
39. Stitch LOWER BAND (10) sections at sides, right sides together, matching notches.



40. With wrong sides together, fold band along foldline, matching notches, centers and seams. Press lightly. Pin raw edges together.

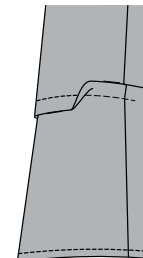


41. On outside, pin band to lower edge of dress, matching notches, centers and seams. Stitch. Press seams toward band, turning band down.



TUCK C

42. To form tuck on dress skirt, fold on foldline, wrong sides together. Stitch on stitching line. Press fold of tuck downward.





# Congrats!

You've completed your sewing adventure

---

**SHARE  
YOUR** LOOK



Post your pattern and tag us  
[@simplicity\\_creative\\_group](#) and [#simplicitypatterns](#)  
for a chance to be featured on our social media.

Look for more PDF patterns at [simplicity.com](https://www.simplicity.com)

Have a question or need help with your sewing project call us at  
1-800-782-0323

**McCall's**  
by **design**<sub>group</sub>

McCall's ©2024 a division of IG Design Group Americas Inc. • Atlanta, GA 30342 USA [www.thedesigngroup.com](http://www.thedesigngroup.com) • All Rights Reserved. [www.mccall.com](http://www.mccall.com) • Made in the U.S.A. Fabriqué aux États-Unis.  
To be used for individual private home use only and not for commercial or manufacturing purposes. • A usage privé seulement et non à des fins commerciales ou de production en série. • Para uso privado solamente, no se puede utilizar con propósitos de comercialización o de producción en serie.