

McCall's

M8474



LEARN TO FIT
With the Palmer/Pletsch Tissue Fitting Method

APPRENDRE A AJUSTER
Avec la méthode d'ajustage de patron de Palmer/Pletsch



Includes Fit Instructions for:
Broad or Narrow Back
Shoulder Princess Full Bust Adjustment
Round Back with Yoke
Sleeve Adjustments

Instructions D'ajustage Comprises:
Dos large ou étroit
Ajustement de poitrine grande à découpe princesses sur l'épaule
Dos rond avec empiècement
Ajustements de la manche

Designed and printed in USA

MELISSA WATSON
FOR PALMER/PLETSCH

Average

MISSES' JACKET

Suggested Fabrics: Cotton Blends, Denim, Linen, Twill. **Lining:** Lining Fabric. **Interfacing:** Lightweight Fusible.

Notions: Five 3/4" (2cm) buttons, eight 5/8" (1.5cm) buttons.

Sizes	8	10	12	14	16	18	20	22	24	26
European	34	36	38	40	42	44	46	48	50	52

BODY MEASUREMENTS: Select pattern size based on body measurements

Bust	31½	32½	34	36	38	40	42	44	46	48	Ins.
Waist	24	25	26½	28	30	32	34	37	39	41	"
Hip-9" below waist	33½	34½	36	38	40	42	44	46	48	50	"
Back-neck to waist	15¾	16	16¼	16½	16¾	17	17¼	17½	17¾	18	"

Jacket

45"*	2¾	2¾	2¾	2¾	2¾	2¾	2¾	2¾	2¾	2¾	Yds.
60"*	1¾	1¾	1¾	1¾	1¾	1¾	1¾	1¾	2	2	"

Lining - 45"* - ¾yd.

Interfacing

20"	1¼	1¼	1¾	1¾	1¾	1½	1½	1¾	1¾	1¾	Yds.
-----	----	----	----	----	----	----	----	----	----	----	------

FINISHED GARMENT MEASUREMENTS (Includes Design and Wearing Ease)

Bust	39½	40½	42	44	46	48	50	52	54	56	Ins.
Waist	35½	36½	38	40	42	44	46	48	50	52	"

Width, lower edge

Jacket	36½	37½	39	41	43	45	47	49	51	53	Ins.
---------------	-----	-----	----	----	----	----	----	----	----	----	------

Finished back length from base of neck

Jacket (incl. band)	21¾	22	22¼	22½	22¾	23	23¼	23½	23¾	24	Ins.
----------------------------	-----	----	-----	-----	-----	----	-----	-----	-----	----	------

*with nap **without nap

Moins Facile

VESTE POUR JEUNES FEMMES

Tissus Conseillés: Cotonnades, Denim, Toile de lin, Twill. **Doublure:** Tissu à doublure. **Entoilage:** Thermocollant léger.

Merceria: 5 boutons de 2cm, 8 boutons de 1.5cm.

Tailles	8	10	12	14	16	18	20	22	24	26
Françaises	36	38	40	42	44	46	48	50	52	54
Européen	34	36	38	40	42	44	46	48	50	52

MESURES DU CORPS: Choisissez la taille du patron basée sur les mesures du corps

Poitrine	80	83	87	92	97	102	107	112	117	122	cm
Taille	61	64	67	71	76	81	87	94	99	104	"
Hanches (23cm au-dessous de la taille)	85	88	92	97	102	107	112	117	122	127	cm
Dos du cou à la taille	40	40.5	41.5	42	42.5	43	44	44.5	45	46	"

Veste

115cm*	2.2	2.2	2.2	2.2	2.2	2.2	2.4	2.4	2.5	2.5	m
150cm*	1.7	1.7	1.7	1.7	1.7	1.7	1.7	1.8	1.8	1.8	"

Doublure - 115cm** - 0.2m

Entoilage

51cm	1.1	1.1	1.1	1.3	1.3	1.4	1.4	1.5	1.5	1.6	m
------	-----	-----	-----	-----	-----	-----	-----	-----	-----	-----	---

MESURES DES VÊTEMENTS FINI (Motif et aisance de port compris)

Poitrine	100	103	107	112	117	122	127	132	137	142	cm
Taille	90	93	97	102	107	112	117	122	127	132	"

Largeur à l'ourlet

Veste	93	95	99	104	109	114	119	124	130	135	cm
--------------	----	----	----	-----	-----	-----	-----	-----	-----	-----	----

Longueur finie – dos, votre nuque à l'ourlet

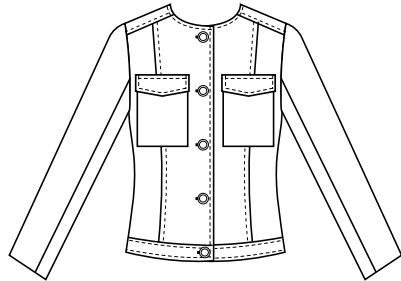
Veste (y compris la bande)	55	56	57	57	58	58	59	60	60	61	cm
-----------------------------------	----	----	----	----	----	----	----	----	----	----	----

*avec sens **sans sens

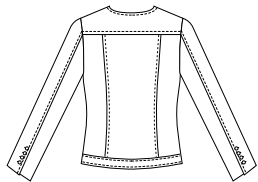


MELISSA WATSON
FOR PALMER/PLETSCH

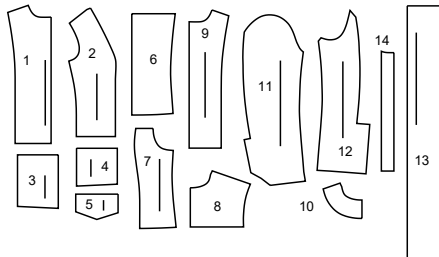
FRONT



BACK



14 PATTERN PIECES



- 1 Front
- 2 Side Front
- 3 Pocket
- 4 Pocket Lining
- 5 Flap
- 6 Back
- 7 Side Back
- 8 Yoke Back
- 9 Front Facing
- 10 Back Facing
- 11 Upper Sleeve
- 12 Under sleeve
- 13 Lower Band
- 14 Guide for Buttonholes

THE DENIM WALKING "SUIT" JACKET

TISSUE FITTING INTRODUCTION AND STYLE TIPS

Because I want you to LOVE what you sew, I am including the Palmer/Pletsch tissue fitting method in all my designs. The method was developed by Pati Palmer and Marta Alto and you can find solutions to all your other fitting woes in the Fit For Real People books.



Follow these 4 easy steps:

- 1) Press tissue with a dry iron set at WOOL setting and trim and tape the pattern.
- 2) Try it on.
- 3) If it doesn't quite fit, make alterations using the handy alteration lines printed on the tissue.
- 4) After cutting, pin your fabric together and try on before you sew.

This denim jacket, is a part of a "walking suit" matching set that I made as a denim tuxedo, if you will. Inspired by vintage Levi, Wrangler, and Levi ads of men's matching denim sets from the 1970's. The style is updated but the concept is true vintage. The fabric it's made in is pretty special to me too; from an Italian mill called Pontoglio that we visited last summer. They specialize in cotton velvet, corduroy, and twill. I loved what they did with this acid wash drill cotton twill.

See more versions of this design and connect with me @melissawatsondesign on Instagram. The Palmer/Pletsch blog, blog.palmerpletsch.com, features extra sewing and styling tips for the Melissa Watson and Palmer/Pletsch patterns!

FIRST TIP: BUY THE RIGHT SIZE!

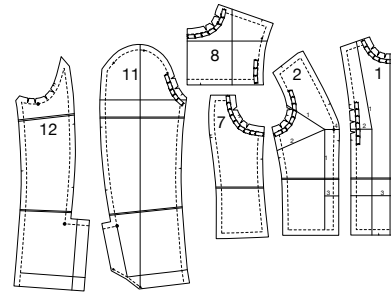
Measure the high bust (below shoulder blades in back and above bust in front)—a snug measurement. Use this measurement as your "bust" when buying a pattern. If between sizes, go to the smaller size.



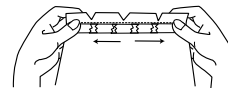
PREPARE YOUR TISSUE FOR FITTING AND TRY IT ON

- A. Trim around the front, side front, back, side back, yoke, pockets, and sleeves.
- B. Press tissue with dry iron set at wool setting.
- C. Mark your 5/8" (1.5cm) stitching lines on the shoulder, side seam, and armhole.

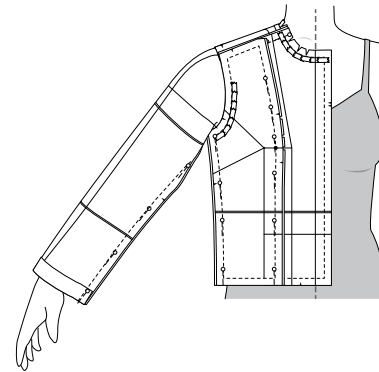
- D. Tape around the armhole curves, neckline and front bust area. You will have to tape around the armhole seams on the jacket and sleeve, in order to try the jacket with the sleeve attached. Tape on the inside of the stitching line, use little pieces and overlap them to ensure you don't tear the tissue. Tape all the way through the stitching line at the underarm seams. Finally clip the seam allowance in the curved areas of the armhole. Clip to the tape, but not through it.



- E. Tug lightly on tissue to see if it is taped securely. Clip curves to stitching line but NOT THROUGH the tape.



- F. Pin your tissue wrong sides together, with the seam allowances sticking out and try it on! Look for the fitting adjustments that you may have to make, following the fitting order.



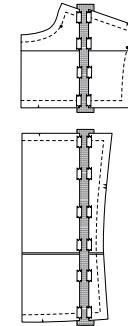
START FITTING!

BROAD AND NARROW BACK ADJUSTMENTS

Always alter the back first in order to accurately measure the amount you need to get the center front of the tissue to your center front. If the center back doesn't reach yours when the armhole is properly placed at your armhole, you need a broad back adjustment. Alternatively, if the center back reaches past your center, then you want to do a narrow back adjustment.

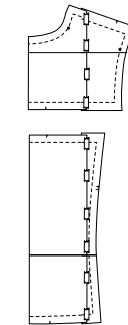
BROAD

- 1) If you have a broad back, measure how much width you need to add to meet the center back to yours. Cut on the broad back adjustment lines (on the back and the yoke) and spread the amount you need. Insert Pattern Paper to fill in the gap. Tape in place.



NARROW

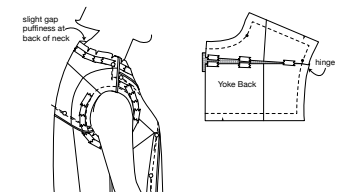
- 2) If you have a narrow back, measure how much center back overlap there is. Take the back and yoke pieces apart. Draw a line next to the broad back alteration line in the amount you want to narrow and fold the two lines together and tape.



HIGH ROUND BACK ADJUSTMENT

If the front neckline is tight and the back neckline is low and gaps, measure the amount you need from the center back seamline at the neck to the base of your neck. (HINT: the base of your neck is around the 6th or 7th cervical vertebrae, or where a necklace would naturally sit on the back of your neck.)

- 3) Take the back yoke pattern piece and cut at the high round back adjustment line. Cut from the center back to the armhole seam to form your "hinge".
- 4) Raise the upper section from the center back (usually no more than 1/4" (6mm) to 3/8" (1.3cm)) so it looks like a sliver of a triangle. Fill it in with tissue.



Now try the tissue back on to check the fit. If cutting on the fold, you will have a little extra width at the back neck to ease to the facing.

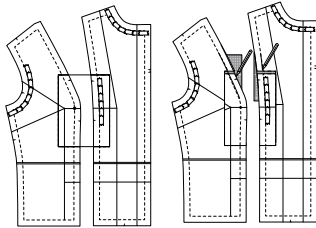
FULL BUST FOR PRINCESS SEAM ADJUSTMENTS

Now you can move around to the front of your body. Check for a full bust adjustment. The amount of alteration depends on the style. You will see a gap in the armhole and draglines pointing to the bust. The pattern's center front also won't reach your center front.

BEFORE THE FULL BUST ADJUSTMENT, CHECK BUST CURVE HEIGHT:

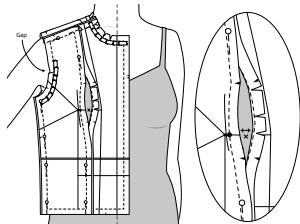
It is common that the bust curve is higher than your curve. It is important to do this alteration before you do the Full Bust Adjustment. Mark where your apex is and note the apex point on the pattern. Lower the curve that amount before you determine how much of a Full Bust Adjustment you need.

To lower the curve, you will just draw a box above the notches on the front and side front; cut the boxes out. Lower the box to where your fullness is. Add tissue and tape in place. True the edges, as shown.



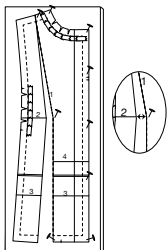
Now Try on the Tissue

- Unpin the tissue in your bust area. If you are very full busted, you may need to unpin to the hemline and measure the distance over the apex from seamline to seamline. That is what you will need to add. To make sure the princess seam is centered over your bust, you may need to add to BOTH the FRONT and SIDE FRONT. Decide how much to add to each. In our instructions we will assume you need to add to both.

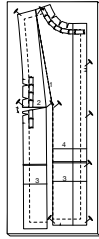


X = bust point (apex)

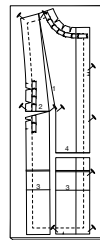
- Pin the FRONT pattern piece, RIGHT side up, to cardboard to keep it anchored. Cut on Line 1 and widen the distance you measured from your tissue fitting at the apex point.



- Cut on Line 2 from the side front seam toward the apex, but not through, leaving a tiny hinge. Swing the bottom half of Line 2 down until the long edges of Line 1 are parallel. When positioned correctly, anchor the two side sections with pins on all edges.



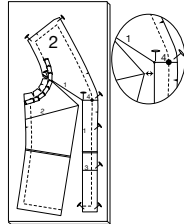
- Cut on Line 4 and drop down until the bottom edges of the pattern sections are even and anchor with pins.



NOTE: You will finish the front AFTER you alter the SIDE FRONT.

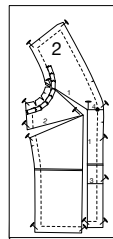
Now Move to the SIDE FRONT

- Cut on Line 1 and widen the distance you measured from your tissue fitting at the apex point.

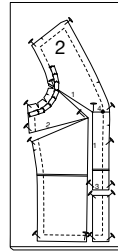


NOTE: If you raised or lowered the curve, you will need to redraw any broken lines.

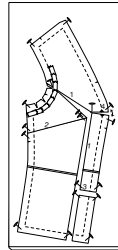
- Cut on Line 2 from the side seam toward the apex, but not through, leaving a tiny hinge. Swing the bottom half of Line 2 down until the long edges of Line 1 are parallel. When positioned correctly, anchor the two side sections with pins on all edges.



- Cut on Line 3 and drop down until the bottom edges of the pattern sections are even and anchor with pins.



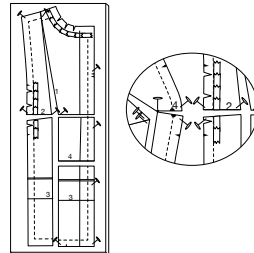
- Cut from the side front edge at the large dot (4) to Line 2. Close Line 2 and 4 will open.



Now Back to the Front

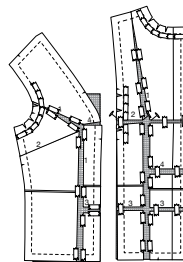
- Cut Line 2 across the FRONT. Spread so the Line 2 opening on the FRONT matches the Line 4 opening on the SIDE FRONT. Match the FRONT and SIDE FRONT at the stitching line NOT at the cut edge!

NOTE: Line 2 will be uneven because you opened part of it in step 3 and again in step 9.



- Cut the FRONT on Line 3 and lengthen same amount as Line 3 on the SIDE FRONT.

- Fill in the openings with tissue on the wrong side. Make sure all pieces are flat and there are no wrinkles in the tissue. Tape in place. Don't remove pins until all pieces are secured.



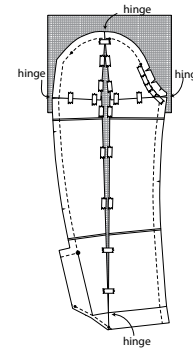
NOTE: Any alterations made to the FRONT and SIDE FRONT must also be made to the LOWER BAND.

SLEEVE ADJUSTMENTS

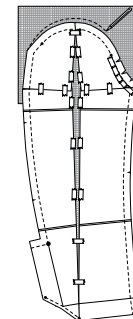
Pin upper and under sleeves, WRONG sides together. With bodice tissue on, bring sleeve tissue up until underarm seam matches the garment underarm seam. Check the width. For woven fabrics, you should be able to pinch at least 1"(2.5cm) of tissue at the full upper arm area for 2"(5cm) of ease.

FULL ARMS

- Cut on the horizontal and vertical alterations lines on the UPPER SLEEVE. Your "hinges" will be at the seamlines and hem fold. Pull on the tissue at the sides of the horizontal cut and widen sleeve the amount you need. The pattern will lap at the horizontal line. Insert tissue and tape in place. Try on again. Check fit.

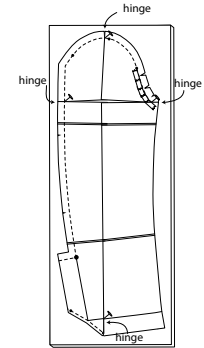


- TIP:** Cap height- If you've widened the sleeve 3/4"(2cm), raise the cap 3/8"(1cm). If more than 3/4"(2cm), add 5/8"(1.5cm) to the seam allowance at the top of the cap just in case you need it. This will prevent drag lines pointing to the cap. Baste sleeve in first. If this is too much to ease in, you can unstitch the cap and trim some of what you added.

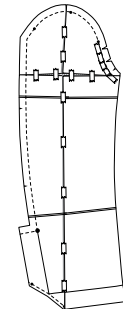


THIN ARMS

- For a narrower sleeve, push in on sides and the sleeve will lap vertically.

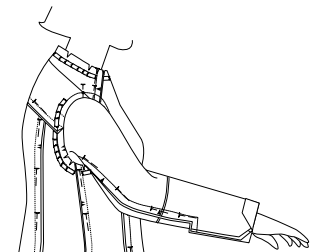


- Insert tissue and tape in place. Try on again. Check fit.



SLEEVE LENGTH

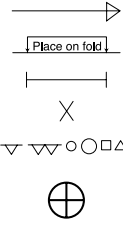
Check that the sleeve is the length you desire! Use the lengthen or shorten line to get the length how you like it.



CONGRATS! YOU HAVE FITTED YOUR JACKET!

Much love,
Melissa

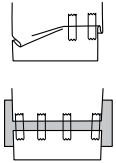
PATTERN MARKINGS



GRAINLINE: Place on straight grain of fabric, parallel to selvage or fold.
FOLDLINE: Place line on fold of fabric.
BUTTONHOLE MARKING: Indicates exact length and placement of buttonholes.
BUTTON MARKING: Indicates button placement.
NOTCHES AND SYMBOLS: For matching seams and construction details.
 Indicates the Bustline, Waistline, Hip and/or Biceps. Measurements refer to circumference of Finished Garment (Body Measurement + Wearing Ease + Design Ease). Adjust pattern if necessary. The measurement excludes pleats, tucks, darts and seam allowances.
SEAM ALLOWANCE: 5/8" (1.5cm) included unless otherwise indicated, but not printed on tissue.

ADJUST IF NECESSARY

Lengthen or Shorten at adjustment lines (==) or where indicated on pattern. If substantial length is added, you may need to purchase additional fabric.
TO SHORTEN: Crease along adjustment line. Make a fold half the amount needed. Tape in place.
TO LENGTHEN: Slash between adjustment lines. Spread amount as needed, keeping edges parallel. Tape over paper.
 When Alteration lines are not on tissue, lengthen or shorten at lower edge.



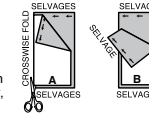
SHRINK FABRIC if not labeled pre-shrunk. Press.

CIRCLE LAYOUT for View, Size, Fabric Width.

Use **WITH NAP** layout for fabrics with one-way designs, nap, pile or surface shading. Because most knits have surface shading, a with nap layout is used.

For **DOUBLE THICKNESS (WITH FOLD)** - fold fabric with right sides together.

* **DOUBLE THICKNESS (WITHOUT FOLD)**- For fabrics with nap, fold fabric crosswise, right sides together. Mark as shown. Cut along crosswise fold of fabric (A). Turn upper layer 180° so arrows go in same direction and place over lower layer, right sides together (B).



For **SINGLE THICKNESS** - place fabric right side up. (For Fur Pile fabrics, place pile side down.)

CUTTING AND MARKING

★ Cut other pieces first, allowing enough fabric to cut this piece. Open fabric. For "Cut 1" pieces, cut piece once on single layer of fabric with piece face up on right side of fabric.

Pattern may have cutting lines for several sizes. Select the proper cutting line or pattern pieces for your size.

Before **CUTTING** place all pieces on fabric according to layout. Pin. (Layouts show approximate position of pattern pieces; position may vary according to your pattern size.) Cut **ACCURATELY**, cutting notches outward.

Before removing pattern, **TRANSFER MARKINGS** and lines of construction to Wrong Side of fabric, using the Pin and Chalk Pencil method or Tracing Paper and Dressmaker Wheel. Markings needed on right side of fabric should be thread traced.

NOTE: Broken-line boxes (a| b| c|) in layouts represent pieces cut by measurements provided.

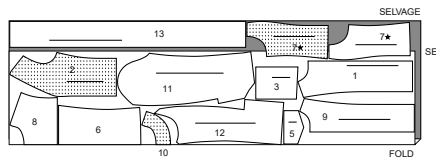
CUTTING LAYOUTS

RIGHT SIDE OF PATTERN	WRONG SIDE OF PATTERN	RIGHT SIDE OF FABRIC	WRONG SIDE OF FABRIC
-----------------------	-----------------------	----------------------	----------------------

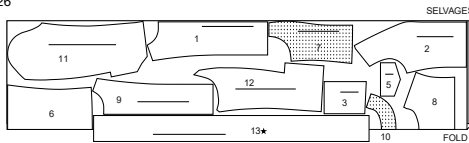
JACKET

use pieces: 1 2 3 5 6 7 8 9 10 11 12 13

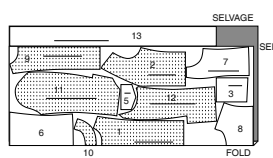
45" (115 cm) with nap sizes 8-10-12-14-16-18



45" (115 cm) with nap sizes 20-22-24-26



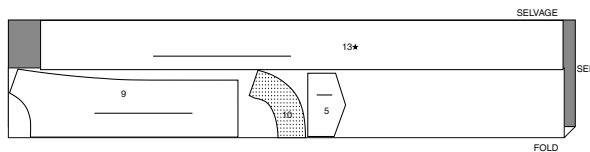
60" (150 cm) with nap all sizes



INTERFACING

use pieces: 5 9 10 13

20" (51 cm) all sizes



LINING

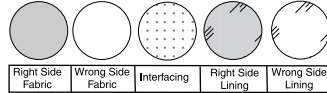
use pieces: 4 5

45" (115 cm) without nap all sizes



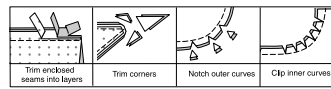
SEWING INFORMATION

FABRIC KEY



SEAM ALLOWANCES

Use 5/8" (1.5cm) seam allowances unless otherwise indicated.



PIN AND FIT

Pin or baste seams, **RIGHT SIDE TOGETHER**, matching notches. Fit garment before stitching major seams.

PRESS

Press seam allowances flat; then open unless otherwise stated. Clip where necessary so they lie flat.

GLOSSARY

EASESTITCH - Stitch along seamline, using long machine stitches. Pull thread ends when adjusting to fit.

NOTE: For sleeve caps, make a second row of long machine stitches 1/4" (6mm) away in seam allowance for more control.

EDGESTITCH - Stitch close to finished edge or seam.

FINISH - Stitch 1/4" (6mm) from raw edge and finish with one of the following: (1) Pink OR (2) Overcast OR (3) Turn in along stitching and stitch close to fold OR (4) Overlock.

OPTIONAL FOR HEMS: Apply Seam Binding.

REINFORCE - Stitch along seamline where indicated in sewing instructions, using small machine stitches.

STAYSTITCH - Stitch 1/8" (3mm) from seamline in seam allowance (usually 1/2" (13mm) from raw edge).

SLIPSTITCH - Slide needle through a folded edge, then pick up a thread of underneath fabric.

TOPSTITCH - On outside, stitch 1/4" (6mm) from edge, seam or previous stitching, using presser foot as guide, or stitch where indicated in instructions.

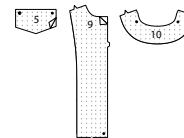
UNDERSTITCH - Open out facing or underside of garment; stitch to seam allowance close to seam.

SEWING DIRECTIONS

JACKET

INTERFACING

1. Fuse **INTERFACING** to **WRONG** side of each matching **FABRIC** section following manufacturer's instructions.

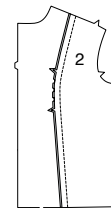


FRONT AND BACK

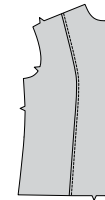
2. **STAYSTITCH** side edge of **FRONT** (1) sections between notches.



3. Pin **SIDE FRONT** (2) sections to front, matching notches, clipping front to staystitching, as needed. Stitch. Press seam toward front.



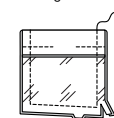
4. **TOPSTITCH** front.



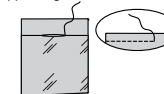
5. Pin **POCKET LINING** (4) to **POCKET** (3), matching single notches. Stitch, leaving an opening for turning. Turn seam toward lining. Press.



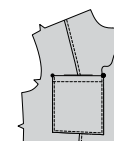
6. Fold pocket along foldline, **RIGHT** sides together, having raw edges even. Stitch sides and lower edges. Trim.



7. Turn pocket **RIGHT** side out through opening. Press. **SLIPSTITCH** opening closed. **TOPSTITCH** pocket 5/8" (1.5cm) from upper edge.



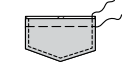
8. On **OUTSIDE**, pin pocket to front matching large and small dots. **EDGESTITCH** sides and lower edges.



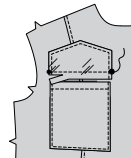
9. Pin **FABRIC FLAP** (5) section to flap **LINING**, right sides together. Stitch sides and lower edges, leaving upper edge open. Trim.



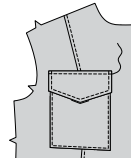
10. Turn right side out. Press. Baste raw edges together. **TOPSTITCH** finished edges.



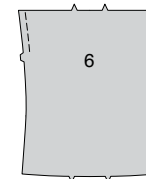
11. Pin flaps to front, matching large and small dots, placing seamline along placement line and seam allowance below placement line. Stitch between dots. Trim flap seam allowance to a scant 1/4" (6mm), being careful not to cut garment.



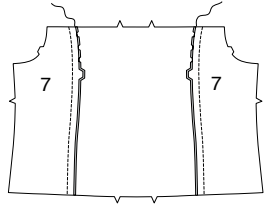
12. Turn flap down, press. **TOPSTITCH** upper edge of flap, encasing trimmed edges.



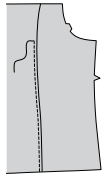
13. **STAYSTITCH** **BACK** (6) above notches.



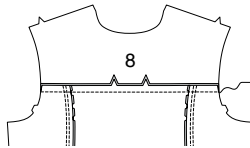
14. Pin SIDE BACK (7) sections to side edges of back matching notches, clipping back to staystitching, as needed. Stitch. Press seam toward back.



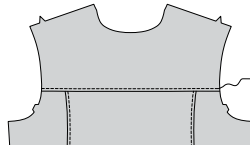
15. TOPSTITCH back.



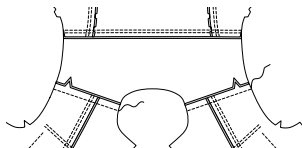
16. Pin YOKE BACK (8) to back matching center backs and notches. Stitch. Press seam toward yoke.



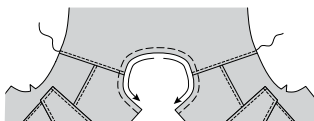
17. TOPSTITCH yoke back.



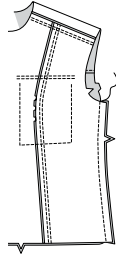
18. Stitch front to yoke at forward shoulder seam matching notches. Press seam toward yoke.



19. TOPSTITCH yoke. STAYSTITCH neck edge.

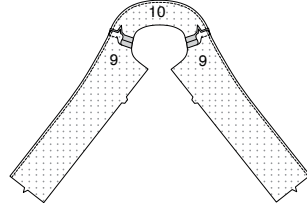


20. Stitch front to back at sides.

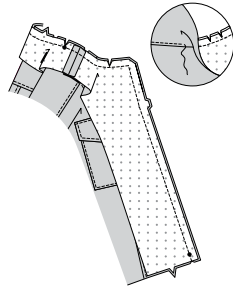


FACINGS

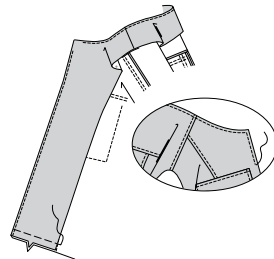
21. Stitch FRONT FACING (9) to BACK FACING (10) at shoulders. FINISH unnotched edge of facing.



22. Pin facing to jacket, RIGHT sides together, matching center backs, notches, and small dots, clipping jacket to staystitching, as needed. Stitch front and neck edges. Trim. UNDERSTITCH facing, as far as possible.

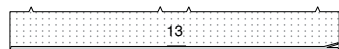


23. Turn facing to inside. Press. TOPSTITCH front and neck edges of jacket. Baste across lower edge of facing.

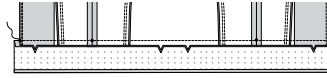


LOWER BAND

24. Turn under 1/2" (1.3cm) on long unnotched edge of LOWER BAND (13). Press. Trim pressed edge to 3/8" (1cm).



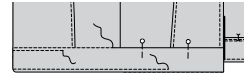
25. Pin lower band to lower edge of jacket matching center backs, notches, placing outer small dots at front opening edges, and inner small dots at side seams. Stitch. Trim. Turn seam toward band. Press.



26. With RIGHT sides together, fold band along foldline. Stitch ends. Trim.

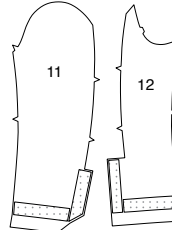


27. Turn ends RIGHT side out. Pin pressed edge of band over seam, placing pins on the outside of band. On OUTSIDE, stitch in the ditch of seam, catching in pressed edge of facing on the inside. TOPSTITCH lower band.

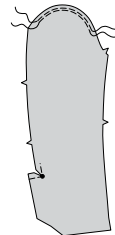


SLEEVES

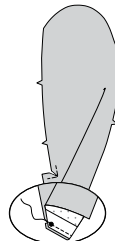
28. Cut a 1-1/2" (3.8cm) wide strip of fusible INTERFACING from a remnant. Fuse to wrong sides of extension on UPPER SLEEVE (11) and UNDER SLEEVE (12), following manufacturer's instructions. Fuse an additional 1-1/2" (3.8cm) wide strip to upper and under sleeves 1-1/2" (3.8cm) above lower edges, making sure the interfacing sections do not overlap.



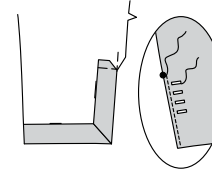
29. EASESTITCH cap of upper sleeve between outer small dots. REINFORCE inward corner, pivoting at large dot. Clip to large dot.



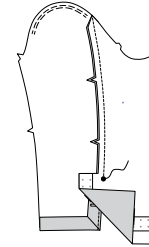
30. To miter corner, with RIGHT sides together, fold lower corner of upper sleeve diagonally, matching small dots. Stitch in a 1/4" (6mm) seam. Backstitch.



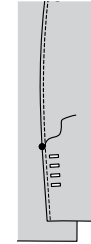
31. Turn corner and extension to inside along foldline, forming facing and pressing up hem. TOPSTITCH finished edge of upper sleeve below large dot. Make buttonholes in upper sleeve at markings.



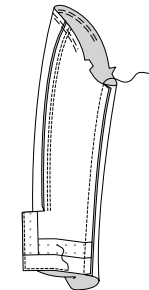
32. Pin upper sleeve to lower sleeve at back edge, matching notches, and large dot. Stitch above large dot. Turn seam towards upper sleeve.



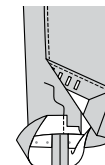
33. TOPSTITCH upper sleeve above large dot, connecting with previous stitching.



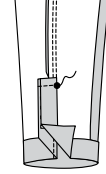
34. Open out hem at front edge of upper sleeve. Pin under sleeve to upper sleeve at front edge. Stitch. FINISH raw edge of facing and lower edge of sleeve.



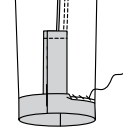
35. Turn lower edge of under sleeve to outside along hemline, RIGHT sides together, matching back edges. Stitch along foldline. Trim, as shown.



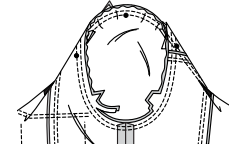
36. Turn corner and extension to inside along foldline, turning up hem. Press. Open out facing on upper sleeve. Stitch upper edge of extension to upper edge of facing, ending at large dot.



37. Turn facing down. Hand sew hem in place.

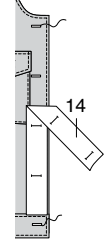


38. With RIGHT sides together, pin sleeves into armhole matching notches, large and small dots. Adjust ease. Stitch. Stitch again 1/4" (6mm) away in seam allowance. Trim close to stitching.

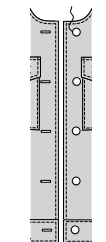


FINISHING

39. Place GUIDE FOR BUTTONHOLES (14) on RIGHT front, having edges of tissue even with finished edges of garment, as shown. Transfer markings. Make buttonholes at markings on right front and lower band.



40. Lap opening edges, matching centers. Using buttonholes as guides, make button markings on LEFT front. Sew buttons to left front and lower band at markings.



41. Sew buttons to positions on under sleeve.





Congrats!

You've completed your sewing adventure

**SHARE
YOUR** LOOK



Post your pattern and tag us
[@simplicity_creative_group](#) and [#simplicitypatterns](#)
for a chance to be featured on our social media.

Look for more PDF patterns at [simplicity.com](https://www.simplicity.com)

Have a question or need help with your sewing project call us at
1-800-782-0323

McCall's
by **design**_{group}

McCall's ©2024 a division of IG Design Group Americas Inc. • Atlanta, GA 30342 USA www.thedesigngroup.com • All Rights Reserved. www.mccall.com • Made in the U.S.A. Fabriqué aux États-Unis.
To be used for individual private home use only and not for commercial or manufacturing purposes. • A usage privé seulement et non à des fins commerciales ou de production en série. • Para uso privado solamente, no se puede utilizar con propósitos de comercialización o de producción en serie.