



Designed and  
printed in USA

Shop all the pattern brands you love @

**Simplicity.com**



A



B



C



D

## 14" (36CM) PLUSH ANIMALS

**Suggested Fabrics:** Cotton/Cotton Blends, Flannel, Fleece/Fleece Types, Knit. **C Contrast 3, Nose Appliqué C, Nose Appliqué D:** Felt. **Interfacing:** Lightweight Fusible knit.

**Notions:** A,B,C,D: Polyfil, Pair of ½" (13mm) shank buttons, heavy duty thread (for shaping face).

**A,B Contrast 1 (Head Front, Right Body Front and Back, Left Arm)**

45/60" - ¾ yd.

**Paper-backed fusible web:** 2" remnant

**C,D Contrast 1 (Head Front, Right Body Front and Back, Left Arm)**

45/60" - ½ yd.

**Bear A**

45/60" - ¾ yd.

**Contrast 2 (Nose Appliqué, Ear, Tail, Paw, Leg, Sole)**

45/60" - ¼ yd.

**Interfacing:** 20" - 1 yd.

**Dragon C**

45/60" - ¾ yd.

**Contrast 2 (Tail, Paw, Leg, Sole)**

45/60" - ¼ yd.

**Wings:** 16" remnant

**Nostrils Appliqué:** 2" remnant

**Interfacing:** 20" - 1 yd.

**Paper-backed Fusible Web:** 16" remnant

**Bunny B**

45/60" - ½ yd.

**Contrast 2 (Nose Appliqué, Ear, Tail, Paw, Leg, Sole)**

45/60" - ¾ yd.

**Interfacing:** 20" - 1½ yd.

**Puppy D**

45/60" - ½ yd.

**Contrast 2 (Ear, Tail, Paw, Leg, Sole)**

45/60" - ¾ yd.

**Nose Appliqué:** 3" remnant

**Interfacing:** 20" - 1¼ yd.

**Paper-backed Fusible Web:** 3" remnant

## ANIMAUX EN PELUCHE DE 36 CM

**Tissus Conseillés:** Coton/Cotonnades, Flanelle, Molleton/Sortes de molleton, Tricot. **Ailes C, Appliqué de nez C, Appliqué de nez D:** Feutre. **Entoilage:** thermocollant léger tricot.

**Merçerie:** A,B,C,D: Fibre de rembourrage en polyester, Paire de boutons à tige de 13mm, fil à toute épreuve (pour former le visage).

**A,B Contraste 1 (Tête devant, Corps droit devant et dos, Bras gauche)**

115/150cm - 0.3m

**Voile thermocollant sur papier :** coupon de 5cm

**C,D Contraste 1 (Tête devant, Corps droit devant et dos, Bras gauche)**

115/150cm - 0.3m

**Ours A**

115/150cm - 0.3m

**Contraste 2 (Appliqué de nez, Oreille, Queue, Patte, Jambes, Plante)**

115/150cm - 0.2m

**Entoilage :** 51cm - 0.9m

**Dragon C**

115/150cm - 0.3m

**Contraste 2 (Queue, Patte, Jambes, Plante)**

115/150cm - 0.2m

**Ailes :** coupon de 41cm

**Appliqué de narines :** coupon de 5cm

**Entoilage :** 51cm - 0.9m

**Voile thermocollant sur papier :** coupon de 41cm

**Lapin B**

115/150cm - 0.5m

**Contraste 2 (Appliqué de nez, Oreille, Queue, Patte, Jambes, Plante)**

115/150cm - 0.3m

**Entoilage :** 51cm - 1.0m

**Chiot D**

115/150cm - 0.5m

**Contraste 2 (Oreille, Queue, Patte, Jambes, Plante)**

115/150cm - 0.2m

**Appliqué de nez :** coupon de 8cm

**Entoilage :** 51cm - 1.1m

**Voile thermocollant sur papier :** coupon de 8cm

\*with nap \*\*without nap

\*avec sens \*\*sans sens

M8470

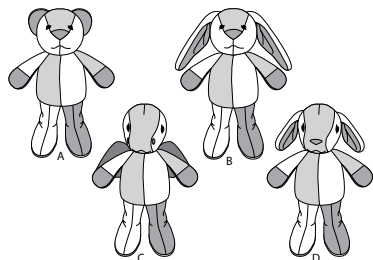
Page 1 of 4

McCall's®

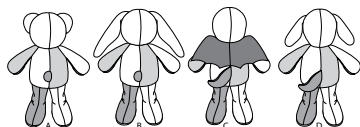
English

1-800-782-0323

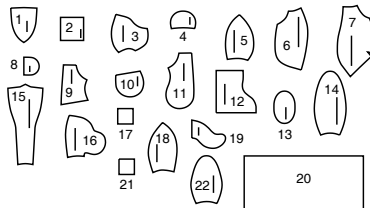
FRONT



BACK

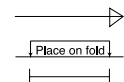


22 PATTERN PIECES



- 1 HEAD FRONT - A,B  
 2 NOSE APPLIQUE - A,B  
 3 HEAD SIDE - A,B  
 4 EAR - A  
 5 HEAD BACK - A,B  
 6 BODY FRONT - A,B,C,D  
 7 BODY BACK - A,B,C,D  
 8 TAIL - A,B  
 9 ARM FRONT - A,B,C,D  
 10 PAW - A,B,C,D  
 11 ARM BACK - A,B,C,D  
 12 LEG - A,B,C,D  
 13 SOLE - A,B,C,D  
 14 EAR - B  
 15 HEAD FRONT - C,D  
 16 HEAD SIDE - C,D  
 17 NOSTRILS APPLIQUE - C  
 18 HEAD BACK - C,D  
 19 TAIL - C,D  
 20 WINGS - C  
 21 NOSE APPLIQUE - D  
 22 EAR - D

## PATTERN MARKINGS

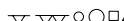


**GRAINLINE:** Place on straight grain of fabric, parallel to selvage or fold.

**FOLDLINE:** Place line on fold of fabric.

**BUTTONHOLE MARKING:** Indicates exact length and placement of buttonholes.

**BUTTON MARKING:** Indicates button placement.



**NOTCHES AND SYMBOLS:** For matching seams and construction details.

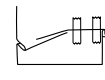
Indicates the Bustline, Waistline, Hip and/or Biceps. Measurements refer to circumference of Finished Garment (Body Measurement + Wearing Ease + Design Ease). Adjust pattern if necessary. The measurement excludes pleats, tucks, darts and seam allowances.

**SEAM ALLOWANCE:** 5/8" (1.5cm) included unless otherwise indicated, but not printed on tissue.

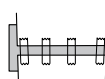
## ADJUST IF NECESSARY

Lengthen or Shorten at adjustment lines (==) or where indicated on pattern. If substantial length is added, you may need to purchase additional fabric.

**TO SHORTEN:** Crease along adjustment line. Make a fold half the amount needed. Tape in place.



**TO LENGTHEN:** Slash between adjustment lines. Spread amount as needed, keeping edges parallel. Tape over paper.



When Alteration lines are not on tissue, lengthen or shorten at lower edge.

## CUTTING AND MARKING

**SHRINK FABRIC** if not labeled pre-shrunk. Press.

**CIRCLE LAYOUT** for View, Size, Fabric Width.

Use **WITH NAP** layout for fabrics with one-way designs, nap, pile or surface shading. Because most knits have surface shading, a with nap layout is used.

For **DOUBLE THICKNESS (WITH FOLD)** - fold fabric with right sides together.

**\* DOUBLE THICKNESS (WITHOUT FOLD)** - For fabrics with nap, fold fabric crosswise, right sides together. Mark as shown. Cut along crosswise fold of fabric (A). Turn upper layer 180° so arrows go in same direction and place over lower layer, right sides together (B).

For **SINGLE THICKNESS** - place fabric right side up. (For Fur Pile fabrics, place pile side down.)

★ Cut other pieces first, allowing enough fabric to cut this piece. Open fabric. For "Cut 1" pieces, cut piece once on single layer of fabric with piece face up on right side of fabric.

Pattern may have cutting lines for several sizes. Select the proper cutting line or pattern pieces for your size.

Before **CUTTING** place all pieces on fabric according to layout. Pin. (**Layouts show approximate position of pattern pieces; position may vary according to your pattern size.**) Cut **ACCURATELY**, cutting notches outward.

Before removing pattern, **TRANSFER MARKINGS** and lines of construction to Wrong Side of fabric, using the Pin and Chalk Pencil method or Tracing Paper and Dressmaker Wheel. Markings needed on right side of fabric should be thread traced.

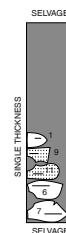
**NOTE:** Broken-line boxes (a! b! c!) in layouts represent pieces cut by measurements provided.

## CUTTING LAYOUTS

RIGHT SIDE OF PATTERN	WRONG SIDE OF PATTERN	RIGHT SIDE OF FABRIC	WRONG SIDE OF FABRIC

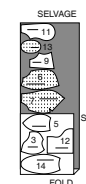
### A,B CONTRAST 1 (Head Front, Right Body Front and Back, Left Arm)

use pieces: 1 6 7 9 11

45°/60° (115cm/150cm)  
with nap

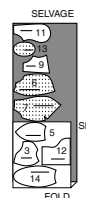
## BUNNY B

use pieces: 3 5 6 7 9 11 12 13 14

45°/60° (115cm/150cm)  
with nap

### CONTRAST 2 (Nose Applique, Ear, Tail, Paw, Leg, Sole)

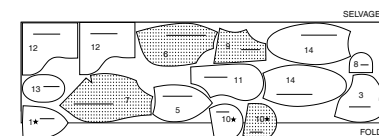
use pieces: 2 8 10 12 13 14

45°/60° (115cm/150cm)  
with nap

## INTERFACING

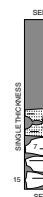
use pieces: 1 3 5 6 7 8 9 10 11 12 13 14

20° (51 cm)



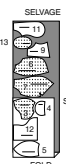
### C,D CONTRAST 1 (Head Front, Right Body Front and Back, Left Arm)

use pieces: 6 7 9 11 15

45°/60° (115cm/150cm)  
with nap

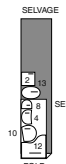
## BEAR A

use pieces: 3 4 5 6 7 9 11 12 13

45°/60° (115cm/150cm)  
with nap

### CONTRAST 2 (Nose Applique, Ear, Tail, Paw, Leg, Sole)

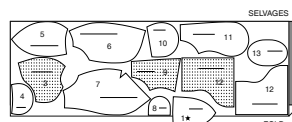
use pieces: 2 4 8 10 12 13

45°/60° (115cm/150cm)  
with nap

## INTERFACING

use pieces: 1 3 4 5 6 7 8 9 10 11 12 13

20° (51 cm)

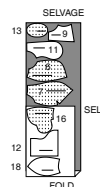


**DRAGON C**

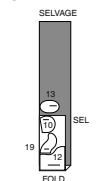
use pieces: 6 7 9 11 12 13 16 18

45"/60" (115cm/150cm)  
with nap

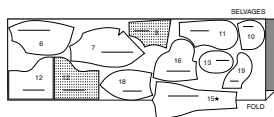
Cut one of piece 17 from fabric and paper back fusible web remnant.  
Cut two of piece 20 from fabric remnant and one of piece 20 from paper backed fusible web.

**CONTRAST 2 (Tail, Paw, Leg, Sole)**

use pieces: 10 12 13 19

45"/60" (115cm/150cm)  
with nap**INTERFACING**

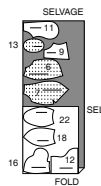
use pieces: 6 7 9 10 11 12 13 15 16 18 19

20" (51 cm)  
without nap**PUPPY D**

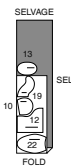
use pieces: 6 7 9 11 12 13 16 18 22

45"/60" (115cm/150cm)  
with nap

Cut one of piece 21 from fabric and paper backed fusible web remnants.

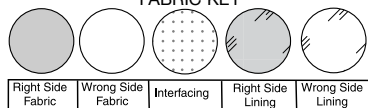
**CONTRAST 2 (Ear, Tail, Paw, Leg, Sole)**

use pieces: 10 12 13 19 22

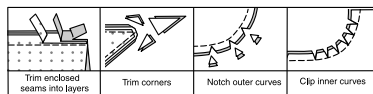
45"/60" (115cm/150cm)  
with nap**INTERFACING**

use pieces: 6 7 9 10 11 12 13 15 16 18 19 22

20" (51 cm)

**SEWING INFORMATION****FABRIC KEY****SEAM ALLOWANCES**

Use 5/8" (1.5cm) seam allowances unless otherwise indicated.

**PIN AND FIT**

Pin or baste seams, **RIGHT SIDE TOGETHER**, matching notches. Fit garment before stitching major seams.

**PRESS**

Press seam allowances flat; then open unless otherwise stated. Clip where necessary so they lie flat.

**GLOSSARY**

Read General Directions on page 1 before you begin.~

Sewing methods in **BOLD TYPE** have Sewing Tutorial Video available. Scan QR CODE to watch videos:

**DART** - see **Darts: "sewing flat dart"** video.**REINFORCE** - see **Machine Stitches: "how to reinforce"** video.**SLIPSTITCH** - see **Hand Stitches: "how to slipstitch"** video.**TOPSTITCH** - see **Machine Stitches: "how to topstitch"** video.**SEWING TUTORIALS**

Build your skills viewing short, easy-to-follow videos at [simplicity.com/sewingtutorials](http://simplicity.com/sewingtutorials)

**PATTERN PIECES WILL BE IDENTIFIED BY NUMBERS THE FIRST TIME THEY ARE USED.**

**STITCH IN 3/8" (1CM) SEAMS WITH RIGHT SIDES TOGETHER UNLESS OTHERWISE STATED.**

**SEWING DIRECTIONS****GENERAL DIRECTIONS****APPLIQUE INSTRUCTIONS**

Apply paper backed fusible web to **WRONG** side of applique fabric, following manufacturer's directions. Pin pattern to **RIGHT** side of prepared fabric. Cut out each applique. Transfer markings to **RIGHT** side of applique using a washable fabric marking pen or pencil.

**STUFFING INSTRUCTIONS**

The finished look of the project is affected by the manner in which it is stuffed. Before stuffing, gently pull apart fiberfill to fluff and separate fibers.

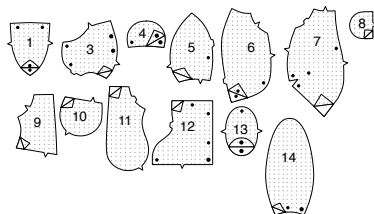
Stuff small areas and points first with small amounts of fiberfill. As you add stuffing, pack fiberfill with a blunt ended tool to aid in shaping.

After stuffing small areas, stuff remaining areas using slightly larger amounts of fiberfill (corresponding with the size of the area being stuffed).

Pack and shape fiberfill with your hands, until seams are fully expanded.

**BEAR A AND BUNNY B****NOTE:** Illustrated for View A, unless otherwise indicated.**INTERFACING**

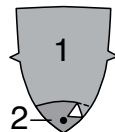
**1.** Fuse interfacing to wrong side of each matching **FABRIC** section, following manufacturer's directions.

**HEAD**

**2.** Prepare **NOSE APPLIQUE** (2); see Applique Instructions.

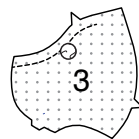
On outside, pin nose to **HEAD FRONT** (1), having upper edge along broken line and outer edges seven, matching small dots.

Fuse applique in place, following manufacturer's directions.



**3. REINFORCE** seamline on head side of **HEAD SIDE** (3) sections along curves.

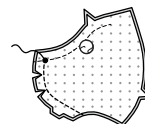
To further reinforce head for button eyes, cut two circles slightly larger than eyes from a remnant of fusible interfacing. Fuse one circle to wrong side of each head side over small dot for eye.



**4.** Pin center front seam of head side sections, matching double notches and small dots.

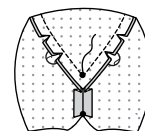
Stitch seam to small dot, as shown.

Clip curves.



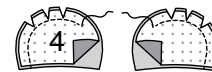
**5.** Pin head side sections to head front, matching small dots. Stitch seam, breaking and reinforcing stitches at small dot.

Lightly press seam allowances towards sides, clipping curves where necessary.

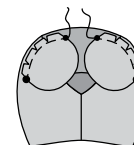
**6. VIEW A:**

Stitch one **EAR** (4) to one contrast ear, leaving lower straight edge open. Clip curves.

Turn ear; lightly press. Baste raw edges together.

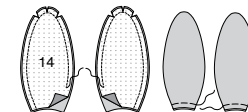


**7.** With right sides together and raw edges even, pin ears (contrast side down) to head, matching small and large dots, clipping ears to fit; baste.

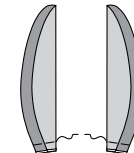
**8. VIEW B:**

Stitch one **EAR** (14) to one contrast ear, leaving lower straight edge open. Trim corners; clip curves.

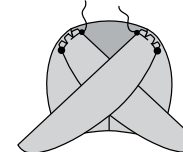
Turn ear; lightly press. Baste raw edges together.



**9.** Turn ear over contrast side along foldline, forming inner ear; baste across lower edges.

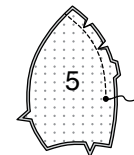


**10.** With right sides together and raw edges even, pin ears (inner ear side) to head, matching small and large dots, clipping ears to fit; baste.

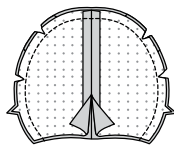
**11. VIEWS A, B:**

Pin triple-notched edges of **HEAD BACK** (5) together, matching small dots. Stitch seam above small dot, as shown.

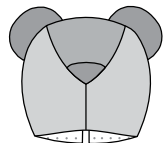
Clip curves.



12. Pin head back to front at sides, matching centers back and front. Stitch, leaving neck edges open. Clip curves.

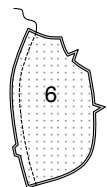


13. Turn head right side out. Lightly press if necessary.

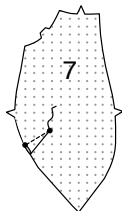


### BODY

14. Stitch center front seam of BODY FRONT (6) sections, matching double notches.



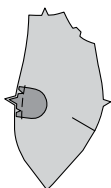
15. Make **DART** in each BODY BACK (7) section; press down.



16. Stitch TAIL (8) sections together, leaving notched edges open. Clip curves. Turn tail, lightly press. Baste raw edges together.



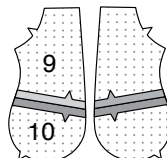
17. With right sides together and raw edges even, baste tail to back edge of right back, matching notches and clipping tail to fit.



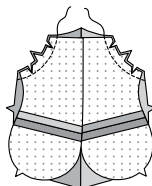
18. Pin center back seam of BODY BACK (7) sections, matching small dots. Stitch center back seam below small dot, as shown.



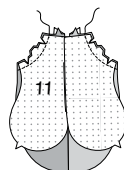
19. Stitch one ARM FRONT (9) section to one PAW (10) section.



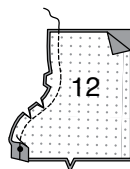
20. Stitch front arms to front, matching single notches, **REINFORCE** seam. Clip curves. Press seams toward arm.



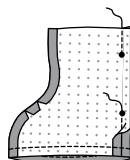
21. Stitch ARM BACK (11) sections to back, matching double notches, **REINFORCE** seamline along curves. Clip curves. Press seams toward arm.



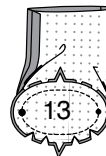
22. Stitch front edges of two LEG (12) sections together, matching double notches and small dots. **REINFORCE** seamline along curves. Clip curves.



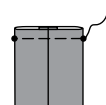
23. Stitch back edges of leg together, leaving seam open between small dots. **REINFORCE** seamline on lower edge.



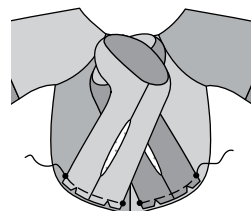
24. Pin contrast SOLE (13) to lower edge of each leg, matching small and large dots, clipping leg seam allowance to reinforcement stitching to fit. Stitch. **REINFORCE** seam. Clip curves. Turn seam allowance toward foot, clipping where necessary.



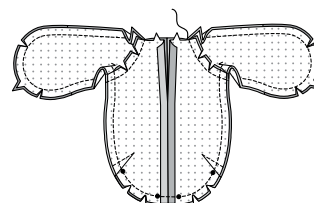
25. Fold upper edge of leg at small dots, matching seams; baste raw edges together.



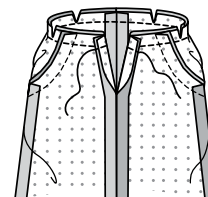
26. With feet pointing outward, pin legs to body front, matching small dots and having raw edges even; clip legs to fit. Baste.



27. Pin back to front along outer edges (over legs), matching small dots and seams. Stitch, leaving neck edge open and being careful not to catch in free edges of legs. **REINFORCE** underarm seam at inner corners. Clip curves (clips not shown in underarm area of for clarity).

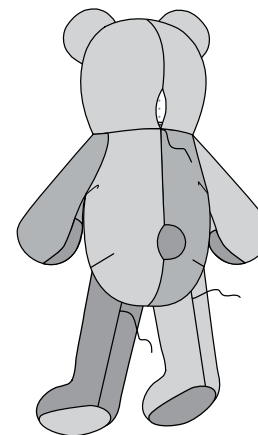
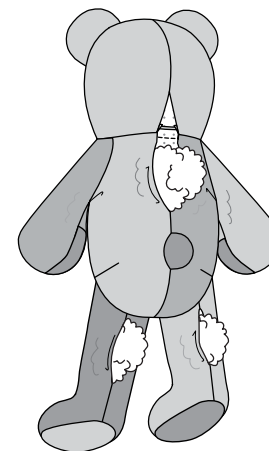


28. Insert head into body, right sides together. Open out center back seams and pin neck edges together, matching side seams and centers, clipping curves where necessary. Stitch. **REINFORCE** seam. Clip curves. Lightly press seam toward head.

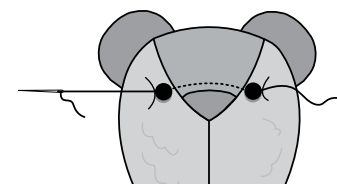


**NOTE:** Body and head will be stuffed separately in order to make indents on head.

29. Turn body **RIGHT** side out through opening in center back seam. Stuff arms and body; see Stuffing Instructions. **SLIPSTITCH** back opening closed as far as neck seam, keeping back of head open. Stuff legs through back openings; **SLIPSTITCH** closed.

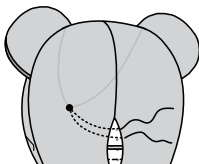


30. Thread a needle with strong thread. Sew button to one side of head at small dot for eye; draw needle through head, coming out at remaining small dot for eye. Stuff upper portion of head to about 1" (2.5cm) below eyes, working stuffing around thread. Attach remaining button. Pull thread taut to indent eyes, as shown on envelope; fasten.

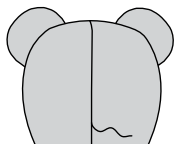




**31.** To shape chin area, thread another needle with strong thread. Insert needle at small dot at back opening and invisibly pick up couple of stitches at small dot on center front seam, leaving long thread ends at end of opening. Stuff remainder of face, working stuffing around threads. Pull on threads to make a slight indent, as shown on envelope. Fasten threads to stuffing at back of head or to seam allowances at opening.



**32.** SLIPSTITCH opening in back of head.

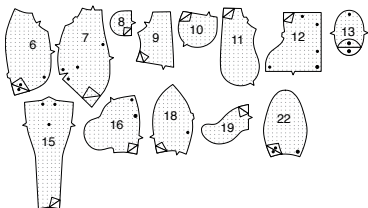


### DRAGON C OR PUPPY D

**NOTE:** Illustrated for View C, unless otherwise indicated.

### INTERFACING

**1.** Apply interfacing to wrong side of each matching fabric section, following manufacturer's directions.

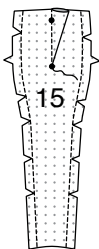


### HEAD

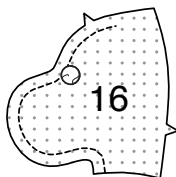
**2.** Make **DART** in HEAD FRONT (15); press toward one side. If you prefer, trim dart seam allowance to 1/4" (6mm); press open as far as possible.

**REINFORCE** seamline on side edges.

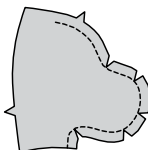
Clip seam allowance to stitching, being careful not to cut through stitching.



**3. REINFORCE** seamline on head side of HEAD SIDE (16) sections along curves. To further reinforce head for button eyes, cut two circles from a remnant of fusible interfacing, slightly larger than eyes. Fuse one circle to wrong side of each head side over small dot for eye.



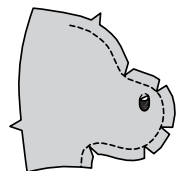
**4.** Clip seam allowance on each head side to stitching along curves, being careful not to cut through stitching.



**5. VIEW C:**

Prepare **NOSTRILS APPLIQUE** (17); see Applique Instructions.

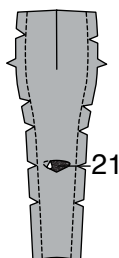
On outside, fuse one nostril to each head side section, having outer edge along broken lines.



**6. VIEW D:**

Prepare **NOSE APPLIQUE** (21); see Applique Instructions.

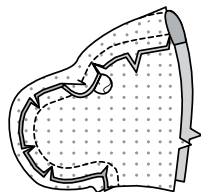
On outside, fuse nose to head front, having outer edge along broken lines.



**7.** Pin head side sections to head front, matching notches and having raw edges even; stitch.

**REINFORCE** seam along curves.

Lightly press seam away from center, clipping curves where necessary.



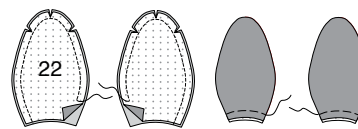
**8. VIEW D:**

Pin one **EAR** (22) to one **CONTRAST** ear, having raw edges even.

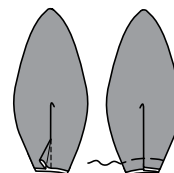
Stitch, leaving straight lower edge open.

Clip curves.

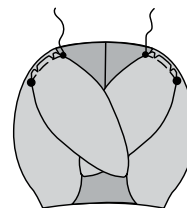
Turn ear; lightly press. Baste raw edges together.



**9.** To make pleat in ear, have contrast ear facing up towards you and fold ear along foldline. Bring fold to broken line; pin. Baste across raw edges.



**10.** With right sides together and raw edges even, pin ears (contrast side) to front head, matching small and large dots, clipping curves to fit; baste.

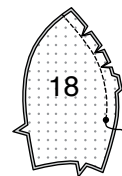


**11. VIEWS C, D:**

Pin back edges of **HEAD BACK** (18) together, matching triple notches and small dots.

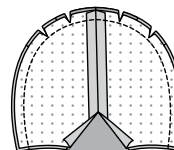
Stitch seam below above small dot, as shown.

Clip curves.

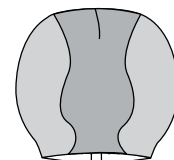


**12.** Pin head back to front at sides, matching centers back and front. Stitch, leaving neck edges open.

Clip curves.



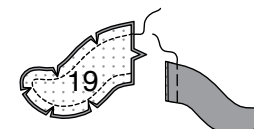
**13.** Turn head right side out. Lightly press.



### BODY

**14.** Stitch **TAIL** (19) sections together, leaving notched edges open. Clip curves.

Turn tail. Lightly press. Baste raw edges together.

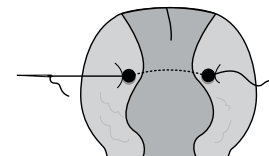


Continue same as for Views A, B- see steps 14 through 29, omitting step 16, and substituting **TAIL** (19) for **TAIL** (8).

**15.** Thread a needle with strong thread.

Sew button to one side of head at small dot for eye; draw needle through head, coming out at remaining small dot for eye.

Stuff upper portion of head to about 1" (2.5cm) below eyes, working stuffing around thread. Attach remaining button. Pull thread taut to indent eyes, as shown on envelope; fasten.

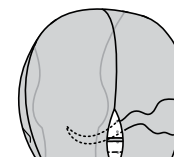


**16.** To shape chin area, thread another needle with strong thread. Insert needle at small dot at back opening and invisibly pick up couple of stitches at small dot on center of head front, leaving long thread ends at end of opening.

Stuff remainder of face, working stuffing around threads.

Pull on threads to make a slight indent, as shown on envelope.

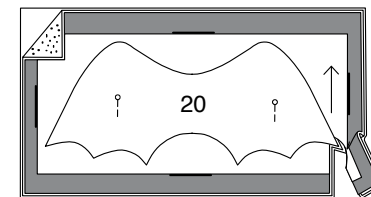
Fasten threads to stuffing at back of head or to seam allowances at opening.



**17.** Sandwich and fuse paper backed fusible web between **WRONG** sides of **WINGS** (20) fabric sections, following manufacturer's directions.

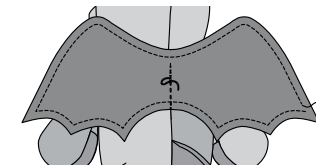
Pin pattern to **RIGHT** side of prepared fabric.

Cut out wings. **TOPSTITCH** outer edge of wings.



### CONTINUE AS FOLLOWS FOR VIEW D

**18.** Pin wings to back of dragon, centering remaining stitching line over center back seam and having upper edge at neck. Using several strands of thread and long running stitches, sew wings along stitching lines.





# Congrats!

You've completed your sewing adventure

---

## SHARE YOUR LOOK



Post your pattern and tag us  
[@simplicity\\_creative\\_group](#) and [#simplicitypatterns](#)  
for a chance to be featured on our social media.

Look for more PDF patterns at [simplicity.com](#)

Have a question or need help with your sewing project call us at  
1-800-782-0323

**McCall's**  
by **design**<sub>group</sub>

McCall's ©2024 a division of IG Design Group Americas Inc. • Atlanta, GA 30342 USA [www.thedesigngroup.com](#) • All Rights Reserved. [www.mccall.com](#) • Made in the U.S.A. Fabriqué aux États-Unis.

To be used for individual private home use only and not for commercial or manufacturing purposes. • A usage privé seulement et non à des fins commerciales ou de production en série. • Para uso privado solamente, no se puede utilizar con propósitos de comercialización o de producción en serie.