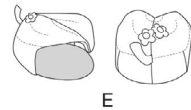
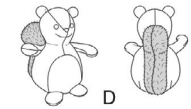
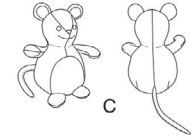
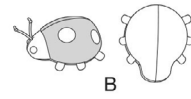
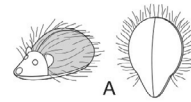




Designed and printed in USA

Shop all the pattern brands you love @ **Simplicity.com**



Average
Moins Facile

PLUSH ANIMALS WITH LEAF AND TREE HOUSES

Suggested Fabrics: A, B: Fleece. C, D: Knit. **A Contrast 1, D Contrast 1:** Fake Fur, Long Pile Fleece. **Ears A, Spots and Legs B, Ears, Tail and Appliques C, Ears, and Nose Applique D, Flowers, Flower Centers and Stem E, Branches and Leaves F:** Felt. **Interfacing E, F:** Headliner Fabric.

Notions: A, B, C, D: Polyfil. **Also for A, C, D:** Pair of 3/6" (8mm) dome safety lock eyes. **Also for A:** One 3/6" (10mm) safety lock nose. **Also for B:** Pair of 3/6" (10mm) safety lock eyes, 4" (10cm) length of rattail.

Hedgehog A - 5" x 15" fabric remnant
Contrast (Body) - 4" x 14" fabric remnant
Ears - 3" x 3" felt remnant

Squirrel D: 60" - 3/4 yd.
Contrast (Tail) - 4" x 12" fabric remnant
Ears - 3" x 3" felt remnant
Nose Applique - 3" x 3" felt remnant
Paper-backed Fusible Web - 3" x 3" remnant

Ladybug B - 5" x 15" fabric remnant
Contrast (Body) - 4" x 14" fabric remnant
Spots Applique - 4" x 5" felt remnant
Legs - 3" x 7" felt remnant
Paper-backed Fusible Web - 4" x 8" remnant

Leaf House E: 45" - 1/2 yd.
Contrast (Base) - 8" x 16" fabric remnant
Stem - 3" x 6" felt remnant
Flowers - 3" x 3" felt remnant
Flower Centers - 3" x 3" felt remnant
Interfacing: 54" - 1/2 yd.
Paper-backed Fusible Web - 3" x 8" remnant

Mouse C: 60" - 3/4 yd.
Inner Ears and Nose Applique - 3" x 7" felt remnant
Ears and Tail - 5" x 6" felt remnant
Paper-backed Fusible Web - 3" x 4" remnant

Tree House F - 11" x 19" fabric remnant
Contrast (Front, Back, Top, Bottom): 45" - 3/4 yd.
Branches - 4" x 7" felt remnant
Leaves - 3" x 4" felt remnant
Interfacing: 54" - 3/4 yd.
Paper-backed Fusible Web - 4" x 4" remnant

ANIMAUX EN PELUCHE AVEC MAISONS DE FEUILLE ET D'ARBRE

Tissu Conseillés: A, B : Molleton. C, D : Tricot. **A Contraste 1, D Contraste 1 :** Fausse fourrure, Molleton à poil long. **Oreilles A, Taches et Jumbé B, Oreilles, queue et appliques C, Oreilles et appliqué de nez D, Fleurs, milieu de fleur et tige E, Branches et feuilles F :** Feutre. **Entoilage E, F :** tissu pour plafond de voiture.

Mercerie: A, B, C, D: Fibre de rembourrage en polyester. A, C, D: 1 paire de yeux demi-bombé avec rondelles de sûreté de 8mm. **Aussi pour A :** 1 nez avec rondelle de sûreté de 10mm. **Aussi pour B :** 1 paire de yeux avec rondelles de sûreté de 10mm, 10cm de queue-de-rat.

Hérisson A - coupon de tissu de 13cm x 38cm
Contraste (Corps) - coupon de tissu de 10cm x 36cm
Oreilles - coupon de feutre de 8cm x 8cm

Écureuil D - 150cm* - 0.4 m.
Contraste (Queue) - coupon de tissu de 10cm x 30cm
Oreilles - coupon de feutre de 8cm x 8cm
Appliqué de nez - coupon de feutre de 8cm x 8cm
Voile thermocollant sur papier - coupon de 8cm x 8cm

Coccinelle B - coupon de tissu de 5cm x 15cm
Contraste (Corps) - coupon de tissu de 10cm x 36cm
Appliqué de taches - coupon de feutre de 10cm x 13cm
Pattes - coupon de feutre de 8cm x 18cm
Voile thermocollant sur papier - coupon de 10cm x 20cm

Maison de feuille E: 115cm* - 0.5 m.
Contraste (Base): coupon de tissu de 20cm x 41cm
Tige - coupon de feutre de 8cm x 15cm
Fleurs - coupon de feutre de 8cm x 8cm
Milieux de fleur - coupon de feutre de 8cm x 8cm
Entoilage: 140cm - 0.5m.
Voile thermocollant sur papier - coupon de 8cm x 20cm

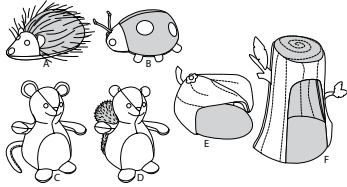
Souris C: 150cm* - 0.4m.
Intérieurs d'oreille et appliqué de nez - coupon de feutre de 8cm x 10cm
Oreilles et queue - coupon de feutre de 13cm x 15cm
Voile thermocollant sur papier - coupon de 8cm x 10cm

Maison d'arbre F - coupon de tissu de 28cm x 48cm
Contraste (Devant, dos, partie supérieure, inférieure): 115cm* - 0.4m.
Branches - coupon de feutre de 10cm x 18cm
Feuilles - coupon de feutre de 8cm x 10cm
Entoilage: 140cm - 0.4m.
Voile thermocollant sur papier - coupon de 10cm x 10cm

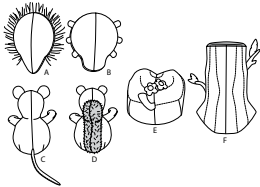
*with nap **without nap

*avec sens **sans sens

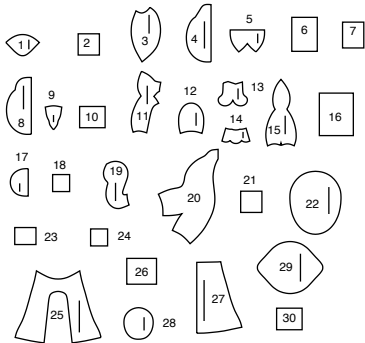
FRONT



BACK

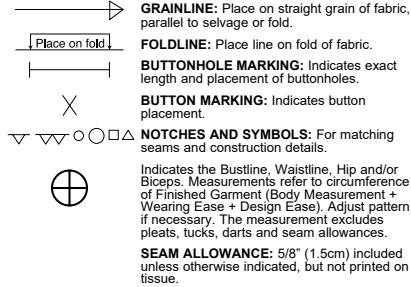


30 PATTERN PIECES

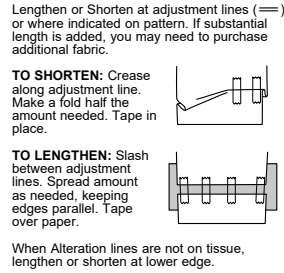


- 1 HEAD - A
- 2 EAR - A,D
- 3 BODY - A,B
- 4 BOTTOM - A
- 5 HEAD - B
- 6 SPOTS APPLIQUE - B
- 7 LEGS - B
- 8 BOTTOM - B
- 9 HEAD FRONT - C,D
- 10 INNER EAR AND NOSE APPLIQUE - C
- 11 FRONT - C,D
- 12 BELLY - C,D
- 13 ARM - C,D
- 14 FOOT - C,D
- 15 BACK - C,D
- 16 EAR AND TAIL - C
- 17 BOTTOM - C,D
- 18 NOSE APPLIQUE - D
- 19 TAIL - D
- 20 LEAF HOUSE - E
- 21 STEM - E
- 22 BASE - E
- 23 FLOWERS - E
- 24 FLOWER CENTERS - E
- 25 FRONT - F
- 26 BRANCHES - F
- 27 BACK - F
- 28 TOP - F
- 29 BOTTOM - F
- 30 LEAVES - F

PATTERN MARKINGS



ADJUST IF NECESSARY



CUTTING AND MARKING

SHRINK FABRIC if not labeled pre-shrunk. Press.

CIRCLE LAYOUT for View, Size, Fabric Width. Use **WITH NAP** layout for fabrics with one-way designs, nap, pile or surface shading. Because most knits have surface shading, a with nap layout is used.

For **DOUBLE THICKNESS (WITH FOLD)** - fold fabric with right sides together.

*** DOUBLE THICKNESS (WITHOUT FOLD)** - For fabrics with nap, fold fabric crosswise, right sides together. Mark as shown. Cut along crosswise fold of fabric (A). Turn upper layer 180° so arrows go in same direction and place over lower layer, right sides together (B).

For **SINGLE THICKNESS** - place fabric right side up. (For Fur Pile fabrics, place pile side down.)

★ Cut other pieces first, allowing enough fabric to cut this piece. Open fabric. For "Cut 1" pieces, cut piece once on single layer of fabric with piece face up on right side of fabric.

Pattern may have cutting lines for several sizes. Select the proper cutting line or pattern pieces for your size.

Before **CUTTING** place all pieces on fabric according to layout. Pin. (Layouts show approximate position of pattern pieces; position may vary according to your pattern size.) Cut **ACCURATELY**, cutting notches outward.

Before removing pattern, **TRANSFER MARKINGS** and lines of construction to Wrong Side of fabric, using the Pin and Chalk Pencil method or Tracing Paper and Dressmaker Wheel. Markings needed on right side of fabric should be thread traced.

NOTE: Broken-line boxes (a| b| c|) in layouts represent pieces cut by measurements provided.

CUTTING LAYOUTS

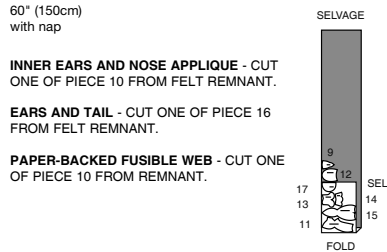
RIGHT SIDE OF PATTERN	WRONG SIDE OF PATTERN	RIGHT SIDE OF FABRIC	WRONG SIDE OF FABRIC
-----------------------	-----------------------	----------------------	----------------------

HEDGEHOG A - CUT ONE OF PIECE 1 AND TWO OF PIECE 4 FROM FABRIC REMNANT CONTRAST (BODY) - CUT TWO OF PIECE 3 FROM FABRIC REMNANT.
EARS - CUT ONE OF PIECE 2 FROM FELT REMNANT.

LADYBUG B - CUT ONE OF PIECE 5 AND TWO OF PIECE 8 FROM FABRIC REMNANT
CONTRAST (BODY) - CUT TWO OF PIECE 3 FROM FABRIC REMNANT.
SPOTS APPLIQUE - CUT ONE OF PIECE 6 FROM FELT REMNANT.
LEGS - CUT TWO OF PIECE 7 FROM FROM FELT REMNANT
PAPER-BACKED FUSIBLE WEB - CUT ONE EACH OF PIECES 6 7 FROM REMNANT

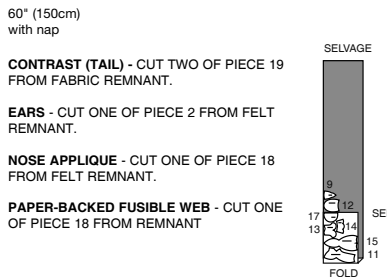
MOUSE C

use pieces: 9 11 12 13 14 15 17



SQUIRREL D

use pieces: 9 11 12 13 14 15 17



LEAF HOUSE E

use pieces: 20

45" (115cm)
with nap

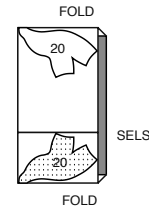
CONTRAST (BASE) - CUT TWO OF PIECE 22 FROM FABRIC REMNANT.

STEM - CUT TWO OF PIECE 21 FROM FELT REMNANT.

FLOWERS - CUT ONE OF PIECE 23 FROM FELT REMNANT.

FLOWER CENTERS - CUT ONE OF PIECE 24 FROM FELT REMNANT.

PAPER-BACKED FUSIBLE WEB - CUT ONE EACH OF PIECES 21 23 24 FROM REMNANT.



TREE HOUSE F - CUT ONE OF PIECE 25 AND TWO OF PIECE 27 FROM FABRIC REMNANT

CONTRAST (FRONT, BACK, TOP, BOTTOM)

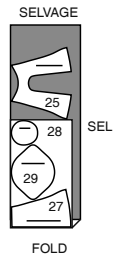
use pieces: 25 27 28 29

45" (115cm)
with nap

BRANCHES - CUT TWO OF PIECE 26 FROM FELT REMNANT.

LEAVES - CUT ONE OF PIECE 30 FROM FELT REMNANT.

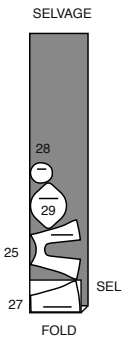
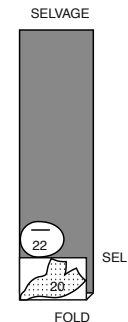
PAPER-BACKED FUSIBLE WEB - CUT ONE EACH OF PIECES 26 FROM REMNANT



INTERFACING F

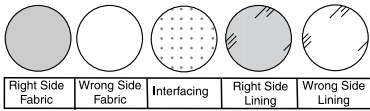
use pieces: 25 27 28 29

54" (140 cm)
without nap
all sizes



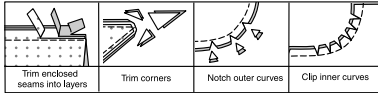
SEWING INFORMATION

FABRIC KEY



SEAM ALLOWANCES

Use 1/4" (6mm) seam allowances unless otherwise indicated.



PIN AND FIT

Pin or baste seams, **RIGHT SIDE TOGETHER**, matching notches. Fit garment before stitching major seams.

PRESS

Press seam allowances flat; then open unless otherwise stated. Clip where necessary so they lie flat.

GLOSSARY

Sewing methods shown in **BOLD ITALICS** are defined below:

APPLY APPLIQUÉ – Pin appliqué(s) to project as instructed in Sewing Directions. Be sure to clear all seam allowances. Fuse appliqué(s) in place, following manufacturer's directions.

DART – To make dart, with **RIGHT** sides together, fold the fabric through the center of the dart, bringing broken lines and small dots together. On **INSIDE**, place pins at **RIGHT** angles to the broken lines. Stitch the dart from wide end to point.

TIP- To prevent a "bubble" at the point, make the last few stitches right on the fold and leave the thread ends long enough to tie a knot. **DO NOT** back-stitch at the point.

Press the dart flat along the stitching to "blend" the stitches, then press dart as indicated in the Sewing Directions.

DART SEAM – To stitch dart seam, with **RIGHT** sides together, bring broken lines together carefully matching small dots. On **INSIDE**, place pins at **RIGHT** angles to the broken lines. Stitch the dart seam from outer edge to the point.

TIP- To prevent a "bubble" at the point, make the last few stitches right on the fold and leave the thread ends long enough to tie a knot. **DO NOT** back-stitch at the point.

Press the dart seam flat along the stitching to "blend" the stitches, then press dart open.

FINISH SEAM – Stitch seam. Zig-zag stitch close to stitching through all thicknesses and trim, or overlock/serge raw edges. Press to one side.

PREPARE APPLIQUÉ – Apply paper backed fusible web to **WRONG** side of appliqué fabric following manufacturer's directions. Cut appliqué tissue block along outer solid line. Pin pattern to **RIGHT** side of prepared fabric. Cut out each appliqué. Transfer markings to **RIGHT** side of appliqué using a washable fabric marking pen or pencil.

SAFETY EYES OR NOSE – To reinforce the fabric, cut 3/4" (2cm) circles from remnants of fusible interfacing. Fuse circles to **WRONG** side of head centered over small dots for eyes or nose. Apply eyes or nose following manufacturer's directions.

STUFF – Pull fiberfill apart and fluff it, breaking apart lumps and thick spots. Use pieces about the size of a gulf ball. Pack into place using the end of a long handled wooden spoon or chopstick. Pack firmly in place each time stuffing is added. Use both hands to mold and shape, being careful not to over stuff or make lopsided.

PATTERN PIECES WILL BE IDENTIFIED BY NUMBERS THE FIRST TIME THEY ARE USED.

STITCH 1/4" (6MM) SEAMS WITH RIGHT SIDES TOGETHER UNLESS OTHERWISE STATED.

SEWING TUTORIALS

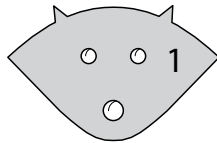


Build your skills viewing short, easy-to-follow videos at simplicity.com/sewingtutorials

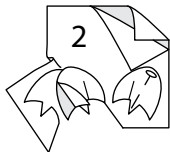
HEDGEHOG A

NOTE: It may be necessary to make clips in a seam allowance to flatten it for a smoother looking animal after stuffing, but clip sparingly as clipping weakens the seam.

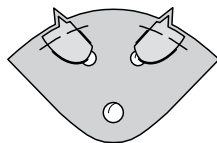
1. Apply 5/16" (8.5mm) **SAFETY EYES** and 3/8" (1cm) **SAFETY NOSE** to **HEAD** (1).



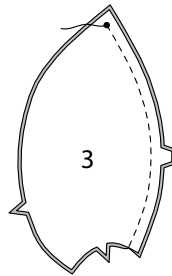
2. Cut **EAR** (2) tissue block along outer solid line. Pin pattern to right side of felt remnant. Cut out each shape. Transfer markings to right side of felt using a fabric pencil.



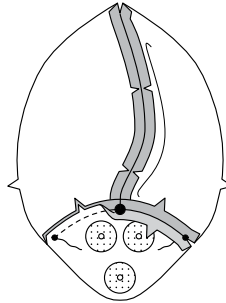
3. Fold inner edge of ear to inside along fold line. Pin ears to head, matching notches; baste.



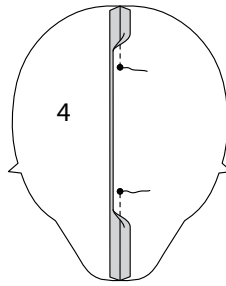
4. Stitch center back edges of **BODY** (3) from neck edge to small dot at lower edge, back-stitching at lower edge to reinforce the seam. Trim seam; clip curves.



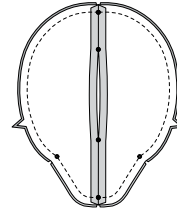
5. With right sides together, pin head to body, matching small dots, large dots, and notches. Stitch between the small dots, back-stitching at dots to reinforce the seam. Press.



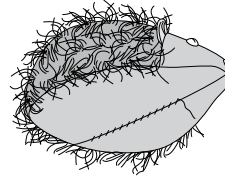
6. Stitch center back edges of **BOTTOM** (4), leaving an opening between the inner small dots for turning. Press.



7. With right sides together and raw edges even, pin body to bottom, matching seams, small dots, and notches. Stitch. Trim seam; clip curves.



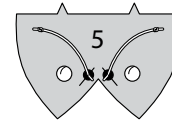
8. Turn hedgehog; press. **STUFF**. Slip-stitch opening closed.



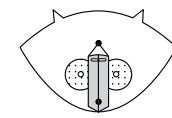
LADYBUG B

NOTE: It may be necessary to make clips in a seam allowance to flatten it for a smoother looking animal after stuffing, but clip sparingly as clipping weakens the seam.

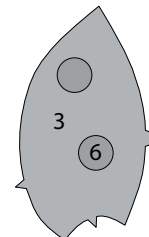
1. Apply 3/8" (1cm) **SAFETY EYES** and to **HEAD** (5). For each antenna, knot one end of rattail, cut knotted rattail 1-3/4" (4.5cm) long. On outside, pin antennae to head at large dots, having raw edges even; baste.



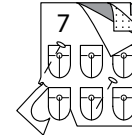
2. Make **DART SEAM** in head.



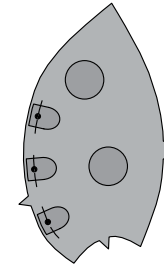
3. **PREPARE APPLIQUÉ SPOTS APPLIQUÉ** (6). **APPLY APPLIQUÉ** spots to **BODY** (3) over inner "VIEW B" markings.



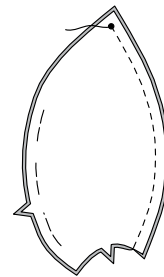
4. Cut two 3" (7.5cm) high by 2-1/2" (6.3cm) wide sections from a felt remnant. Apply paper backed fusible web to one section and fuse the two sections with wrong sides together. Cut **LEGS** (7) tissue block along outer solid line. Pin pattern to right side of remnant. Cut out each shape.



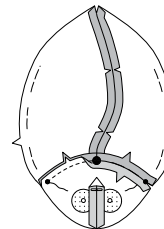
5. Pin legs to body matching small dots with raw edges even; baste.



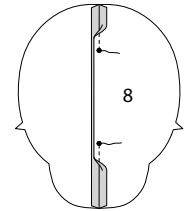
6. Stitch center back edges of **BODY** (3) From neck edge to small dot on lower edge, back-stitching at lower edge to reinforce the seam. Trim seam; clip curves.



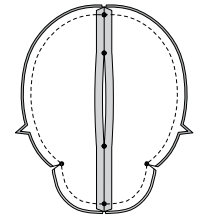
7. With right sides together, pin head to body, matching small dots, large dots, and notches. Stitch between the small dots, back-stitching at dots to reinforce the seam. Press.



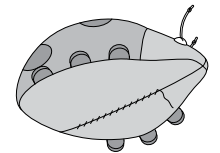
8. Stitch center back edges of **BOTTOM** (8), leaving an opening between the inner small dots for turning. Press.



9. With right sides together and raw edges even, pin body to bottom, matching seams, small dots, and notches. Stitch, pivoting with needle in fabric at inner small dots. Trim seam; clip to inner small dot.



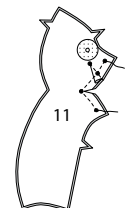
10. Turn ladybug; press. **STUFF**. Slip-stitch opening closed.



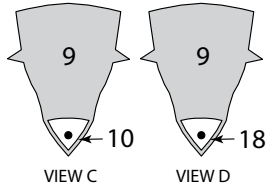
MOUSE C; SQUIRREL D

NOTE: It may be necessary to make clips in a seam allowance to flatten it for a smoother looking animal after stuffing, but clip sparingly as clipping weakens the seam.

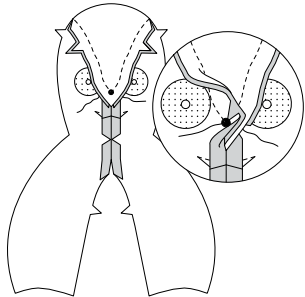
1. To reinforce the fabric, cut 3/4" (2cm) circles from remnants of fusible interfacing. Fuse circles to wrong side of **FRONT** (11) centered over small dots for eyes. Make **DART**. Press dart toward neck. Stitch center front edges of front sections together between the small dots, back-stitching at dots to reinforce the seam. Clip seam at inner small dot at neckline, being careful not to clip through stitching.



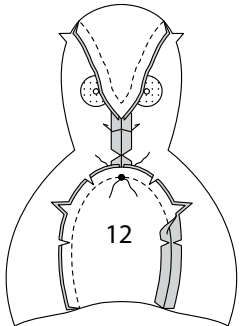
2. PREPARE APPLIQUÉ INNER EAR AND NOSE APPLIQUÉ (10) for View C or NOSE APPLIQUÉ (18) for View D. APPLY APPLIQUÉ nose to HEAD FRONT (9) with raw edges even, matching small dots.



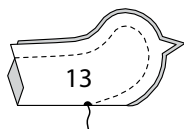
3. With right sides together and raw edges even, pin head front to front, matching small dots and notches. Stitch, breaking stitching at small dot. Press seam toward front. Trim seam. Apply 5/16" (8.5mm) SAFETY EYES at small dots.



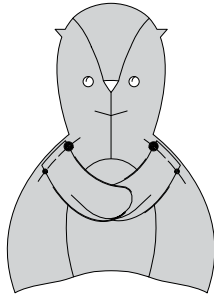
4. Pin BELLY (12) to remaining front edges of front, matching small dots and notches. Stitch, breaking stitching at small dot. Trim seam; clip curves.



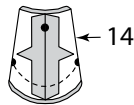
5. For each arm, stitch notched edges of ARM (13) together from outer edge to small dot, back-stitching at dot to reinforce the seam. Trim seam.



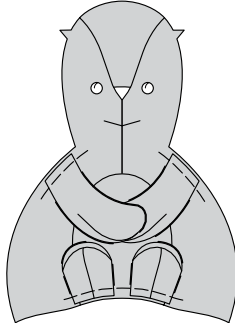
6. Turn arm. Fold along fold lines; press. STUFF. Baste raw edges together. On outside, pin arm to side edge of front, matching small and large dots; baste.



7. For each foot, stitch center seam of FOOT (14). Trim seam. Fold foot along foldlines, bringing seam to small dot. Stitch across lower edge between the small dots. Trim seam.

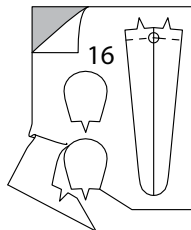


8. Turn foot. STUFF. Baste raw edges together. On outside, pin each foot to lower edge of belly with outer edge of foot 1/8" (3mm) from seamline of belly; baste.

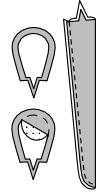


EAR AND TAIL C

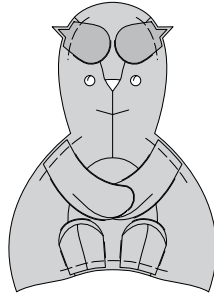
9. Cut EAR AND TAIL (16) tissue block along outer solid line. Pin pattern to right side of remnant. Cut out each shape.



10. On outside, pin inner ear sections to ear sections along broken line, matching notches. Fuse in place. Fold tail along fold line with wrong sides together; press. Stitch close to raw, unnotched edge.

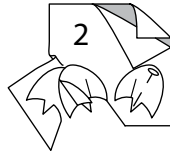


11. With right sides together and raw edges even, pin ear to side edge of front, matching notches; baste. (Tail will be addressed later.)

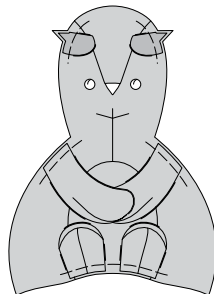


EAR AND TAIL D

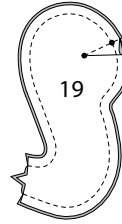
12. Cut EAR (2) tissue block along outer solid line. Pin pattern to right side of felt remnant. Cut out each shape. Transfer markings to right side of felt using a fabric pencil.



13. Fold inner edge of ear to inside along fold line; baste. With right sides together and raw edges even, pin ear to side edge of front with fold edge toward head front, matching notches; baste.



14. Make DART SEAM in TAIL (19). Press dart toward lower end. With right sides together and raw edges even, pin tail sections. Stitch, leaving notched edge open. Trim seam.



15. Turn tail; press. STUFF. Baste raw edge.

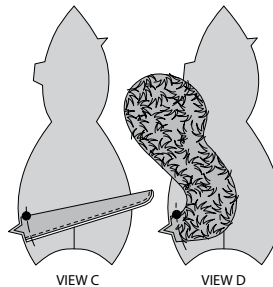


CONTINUE AS FOLLOWS FOR BOTH VIEWS

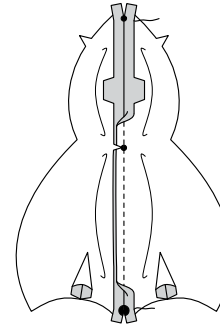
16. Make DART SEAM in BACK (15). Press open.



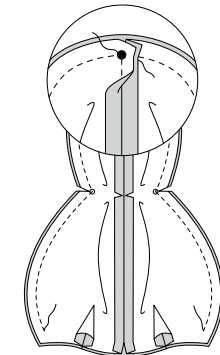
17. On outside, pin tail to back, matching large dots and notches. Baste.



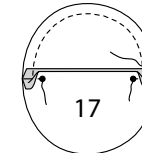
18. Stitch center back seam of back between the small and large dots, back-stitching at dots to reinforce the seam. Clip to stitching at inner small dot. Trim seam.



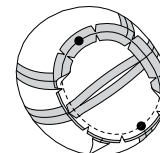
19. Pin front to back at side edges, matching small dots and notches, crushing or folding tail as necessary to keep it clear of seam allowances. Stitch side edges between 1/4" (6mm) from lower edges, back-stitching at ends to reinforce the seam, and breaking stitching at small dot. Trim seam; clip curves and inner corners.



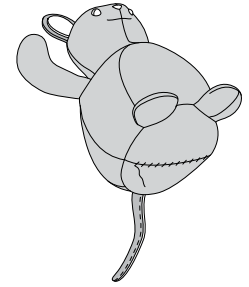
20. Stitch center edges of BOTTOM (17) together, leaving an opening between the small dots for turning. Stitch along seamline.



21. With right sides together and raw edges even, pin bottom to front and back, matching large dots and seams, clipping to stitching, as necessary. Stitch. Trim seam.



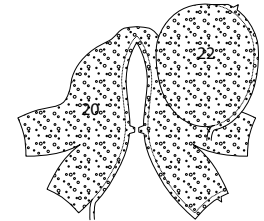
22. Turn mouse or squirrel; press. STUFF. Slip-stitch opening closed.



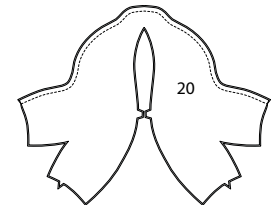
LEAF HOUSE E

NOTE: It may be necessary to make clips in a seam allowance to flatten it for a smoother looking house, but clip sparingly as clipping weakens the seam.

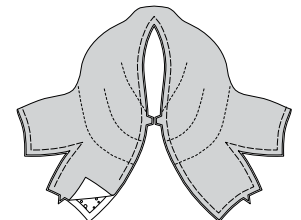
1. Trim 1/4" (6mm) seam allowance from LEAF HOUSE (20) and BASE (22) interfacing sections.



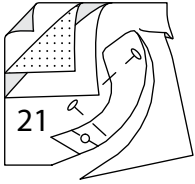
2. Stitch upper edge of LEAF HOUSE (20) sections with right sides together. Trim seam.



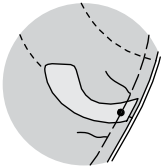
3. Turn leaf house; press. Slide interfacing between wrong sides of leaf house. Baste raw edges together. Stitch along stitching lines.



4. Cut two 2-1/2" (6.3cm) high by 2-1/2" (6.3cm) wide sections from a felt remnant. Apply paper backed fusible web to one section and fuse the two sections with wrong sides together. Cut STEM (21) tissue block along outer solid line. Pin pattern to right side of remnant. Cut out each shape.



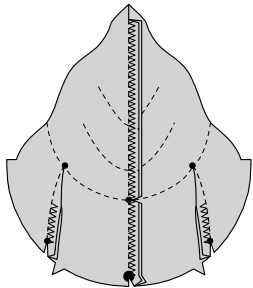
5. On outside, pin stem to leaf house along center edge, matching small dots; baste.



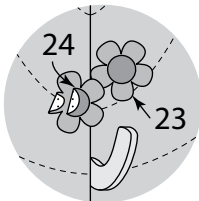
6. Make **DART SEAM**(s) on leaf house, stitching between small dots. **FINISH SEAM**(s). Press toward center.

Fold house along center fold line with right sides together, matching small dots, large dots, and notches. Stitch between the large and small dots. **FINISH SEAM**.

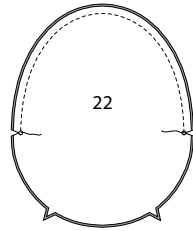
Clip to stitching at small dots and inner small dot on center.



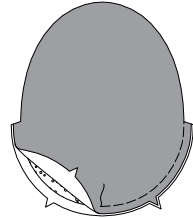
7. **PREPARE APPLIQUÉ FLOWERS (23) and FLOWER CENTERS (24). APPLY APPLIQUÉ** flower centers to flowers, matching centers. **APPLY APPLIQUÉ** flowers to leaf house at center over stitching line, as shown.



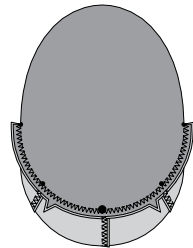
8. Stitch upper edge of **BASE (22)** sections with right sides together between the small dots. Back-stitch at dots to reinforce the seam. Clip to stitching at small dots. Trim seam.



9. Turn base; press. Slide interfacing between wrong sides of base. Baste raw edges together.



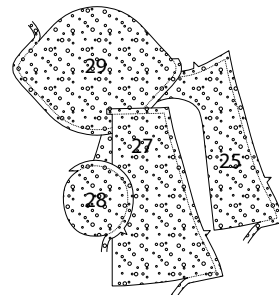
10. With right sides together and raw edges even, pin house to base, matching small dots, large dots, and notches. Stitch. **FINISH SEAM**.



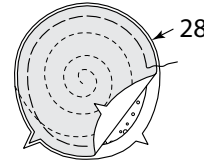
TREE HOUSE F

NOTE: It may be necessary to make clips in a seam allowance to flatten it for a smoother looking house, but clip sparingly as clipping weakens the seam.

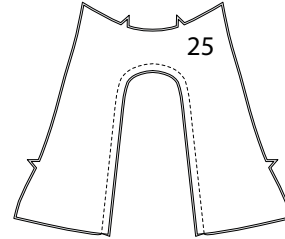
1. Trim 1/4" (6mm) seam allowance from **FRONT (25)**, **BACK (27)**, **TOP (28)**, and **BOTTOM (29)** interfacing sections.



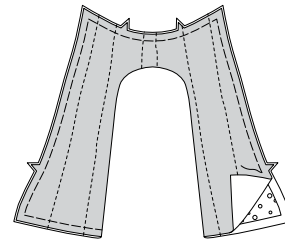
2. Sandwich interfacing between wrong sides of **TOP (28)**. Baste raw edges together. Stitch along stitching lines.



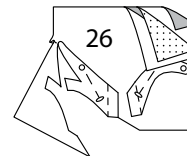
3. Stitch front opening edges of **FRONT (25)** sections with right sides together. Trim seam.



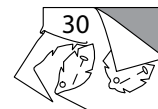
4. Turn front; press. Slide interfacing between wrong sides of front. Baste raw edges together. Stitch vertical, wavy, jagged lines to simulate tree bark.



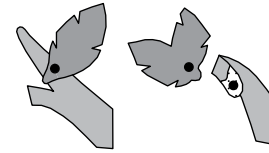
5. Cut two 3" (7.5cm) high by 3-1/2" (9cm) wide sections from a felt remnant. Apply paper backed fusible web to one section and fuse the two sections with wrong sides together. Cut **BRANCHES (26)** tissue block along outer solid line. Pin pattern to right side of remnant. Cut out each shape.



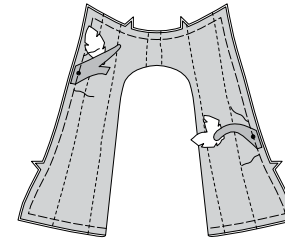
6. Cut a 2" (5cm) high by 2-1/2" (6.3cm) wide section from a felt remnant. Cut **LEAVES (30)** tissue block along outer solid line. Pin pattern to right side of remnant. Cut out each shape.



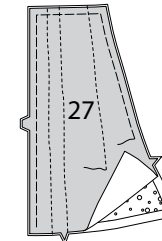
7. Apply single leaf to double branch and double leaf to single branch, matching small dots with a small piece of paper backed fusible web or fabric glue.



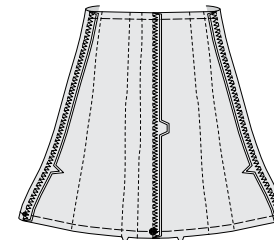
8. On outside, pin single branch to side edge of tree house with straight edges even centered over lower small dot, and double branch to side edge over upper small dot in the same manner; baste.



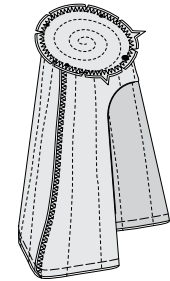
9. Sandwich interfacing between wrong sides of **BACK (27)** fabric and contrast sections. Baste raw edges together. Stitch vertical, wavy, jagged lines to simulate tree bark.



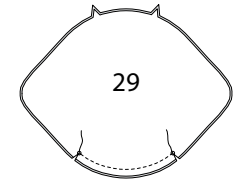
10. With right sides together and raw edges even, stitch center back seam of back. Stitch front to back at side seams, matching notches. Press seam toward back. **FINISH SEAM**(s).



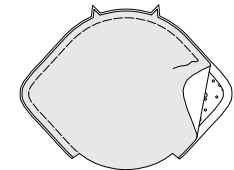
11. With right sides together and raw edges even, pin top to front and back, matching large dots and notches, placing small dots at seams, clipping to stitching as necessary. Stitch. **FINISH SEAM**.



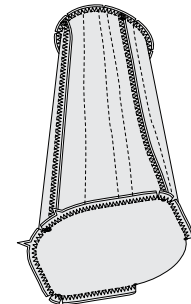
12. Stitch front edge of **BOTTOM (29)** sections between the small dots with right sides together. Trim seam. Clip to small dots.



13. Turn bottom; press. Slide interfacing between wrong sides of bottom. Baste raw edges together.



14. With right sides together and raw edges even, pin bottom to front and back, matching small dots, large dots and notches, clipping to stitching as necessary. Stitch. **FINISH SEAM**.





Congrats!

You've completed your sewing adventure

**SHARE
YOUR** LOOK



Post your pattern and tag us
[@simplicity_creative_group](#) and [#simplicitypatterns](#)
for a chance to be featured on our social media.

Look for more PDF patterns at [simplicity.com](https://www.simplicity.com)

Have a question or need help with your sewing project call us at
1-800-782-0323

McCall's
by **design**_{group}

McCall's ©2024 a division of IG Design Group Americas Inc. • Atlanta, GA 30342 USA www.thedesigngroup.com • All Rights Reserved. www.mccall.com • Made in the U.S.A. Fabriqué aux États-Unis.

To be used for individual private home use only and not for commercial or manufacturing purposes. • A usage privé seulement et non à des fins commerciales ou de production en série. • Para uso privado solamente, no se puede utilizar con propósitos de comercialización o de producción en serie.