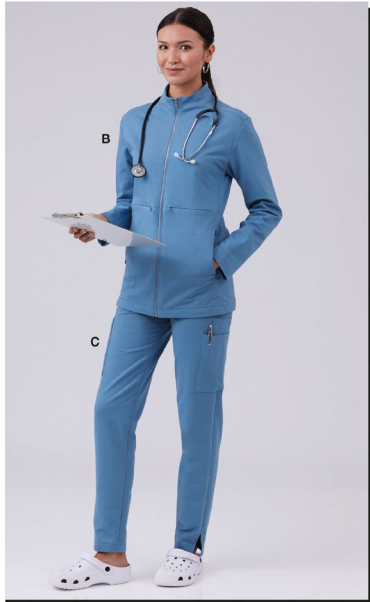


McCall's

M8468



Designed and
printed in USA

Average							
MISSES' SCRUBS							
Suggested Fabrics: Stable Knits such as: Fleece, French Terry Fleece, Ponte de Roma, Sweatshirt Fleece. Contrast: Cotton/Cotton Blends. Interfacing A,B: Fusible Knit.							
Notions: A,B: One 28" (71cm) separating zipper (cut to fit), four 9" (18cm) invisible zippers (cut to fit). Also for A: One pkg. of ½" (1.3cm) single fold bias tape. C: ¾ yds. (1.2m) of ¾" (2cm) elastic.							
Sizes	XS (4-6)	S (8-10)	M (12-14)	L (16-18)	XL (20-22)	XXL (24-26)	
European	30-32	34-36	38-40	42-44	46-48	50-52	
BODY MEASUREMENTS: Select pattern size based on body measurements							
Bust	29½-30½	31½-32½	34-36	38-40	42-44	46-48	Ins.
Waist	22-23	24-25	26½-28	30-32	34-37	39-41½	"
Hip-9" below waist	31½-32½	33½-34½	36-38	40-42	44-46	48-50	"
Back-neck to waist	15¼-15½	15¾-16	16¼-16½	16¾-17	17¼-17½	17¾-18	"
Vest A	60"*	1¼	1¼	1¾	1½	1½	Yds.
Contrast A,B (Pockets)	45"*	1	1½	1½	1½	1½	Yds.
Interfacing A,B	20"	¼	¼	¼	¼	¼	"
Jacket B	60"*	1½	1½	1½	2	2½	Yds.
Pants C	60"*	1½	1½	1½	2¼	2¼	Yds.
FINISHED GARMENT MEASUREMENTS (Includes Design and Wearing Ease)							
A,B Bust	35½	37½	41½	45½	49½	53½	Ins.
A,B Waist	34½	36½	40½	44½	48½	52½	"
Width, lower edge							
Vest A, Jacket B	37	39	43	47	51	55	Ins.
Width, each leg							
Pants C	10½	11	11½	12	12½	13	Ins.
Finished back length from base of neck							
Vest A, Jacket B	25½	26	26½	27	27½	28	Ins.
Finished side length from waist							
Pants C	40½	41	41½	42	42½	43	Ins.

*with nap **without nap

Moins Facile

UNIFORMES DE MÉDECIN POUR JEUNES FEMMES

Tissus Conseillés: Tricotés stables tels que: Molleton, Tissu bouclette, Tricot ponte, Jersey molletonné pour sweat-shirt. **Contraste:** Coton/Cotonnades. **Entoilage A,B:** Tricot thermocollant.

Mercerie: A,B: 1 fermeture à glissière séparable de 71cm (coupée pour ajuster), 4 fermetures à glissière invisible de 18cm (coupée pour ajuster). **Aussi pour A:** 1 paquet de ruban de biais simple de 1.3cm. **C:** 1.2m d'élastique de 2cm.

Tailles	TP/XS	P/S	M/M	G/L	TG/XL	TTG/XXL
Françaises	32-34	36-38	40-42	44-46	48-50	52-54
Européen	30-32	34-36	38-40	42-44	46-48	50-52

MESURES DU CORPS: Choisissez la taille du patron basée sur les mesures du corps

Poitrine	75-77	80-83	87-92	97-102	107-112	117-122	cm
Taille	56-58	61-64	67-71	76-81	87-94	99-105	"

Hanches (23cm au-dessous de la taille)

	80-83	85-88	92-97	102-107	112-117	122-127	cm
Dos du cou à la taille	39-39.5	40-40.5	41.5-42	42.5-43	44-44.5	45-45.5	"

Gilet A	150cm*	1.1	1.1	1.1	1.2	1.4	m
---------	--------	-----	-----	-----	-----	-----	---

Contraste A,B (Poches)

	115cm*	0.9	0.9	1.0	1.0	1.0	m
--	--------	-----	-----	-----	-----	-----	---

Entoilage A,B	51cm	0.2	0.2	0.2	0.2	0.2	"
---------------	------	-----	-----	-----	-----	-----	---

Veste B	150cm*	1.5	1.5	1.5	1.5	1.8	1.9	m
---------	--------	-----	-----	-----	-----	-----	-----	---

Pantal C	150cm*	1.4	1.4	1.4	1.9	1.9	2.1	m
----------	--------	-----	-----	-----	-----	-----	-----	---

MESURES DES VÊTEMENTS FINI (Motif et aisance de port compris)

A,B Poitrine	90	95	105	116	126	136	cm
--------------	----	----	-----	-----	-----	-----	----

A,B Taille	88	93	103	113	123	133	"
------------	----	----	-----	-----	-----	-----	---

Largeur à l'ourlet

Gilet A, Veste B	94	99	109	119	130	140	cm
------------------	----	----	-----	-----	-----	-----	----

Largeur, chaque jambe

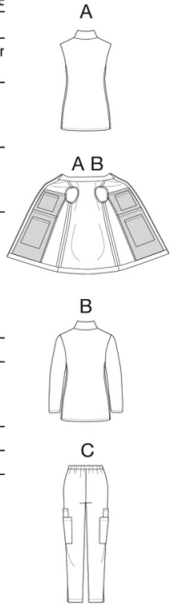
Pantal C	27	28	29	30	32	33	cm
----------	----	----	----	----	----	----	----

Longueur finie – dos, votre nuque à l'ourlet

Gilet A, Veste B	65	66	67	69	70	71	cm
------------------	----	----	----	----	----	----	----

Longueur finie – côté, taille à l'ourlet

Pantal C	103	104	105	107	108	109	cm
----------	-----	-----	-----	-----	-----	-----	----



M8468

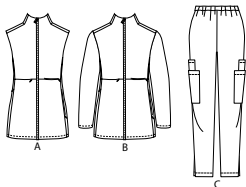
Page 1 of 4

McCall's[®]

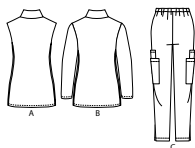
English

1-800-782-0323

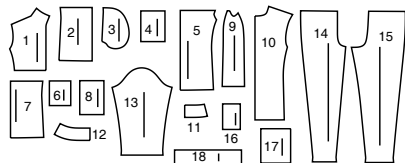
FRONT



BACK

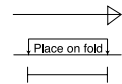


18 PATTERN PIECES



- 1 UPPER FRONT - A,B
2 LOWER FRONT - A,B
3 POCKET - A,B
4 UPPER POCKET - A,B
5 INSIDE FRONT PANEL - A,B
6 UPPER INSIDE POCKET - A,B
7 INSIDE LOWER FRONT PANEL - A,B
8 LOWER INSIDE POCKET - A,B
9 SIDE PANEL - A,B
10 BACK - A,B
11 NECK BAND - A,B
12 NECK FACING - A,B
13 SLEEVE - B
14 FRONT - C
15 BACK - C
16 UPPER POCKET - C
17 LOWER POCKET - C
18 WAISTBAND - C

PATTERN MARKINGS

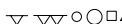


GRAINLINE: Place on straight grain of fabric, parallel to selvage or fold.

FOLDLINE: Place line on fold of fabric.

BUTTONHOLE MARKING: Indicates exact length and placement of buttonholes.

BUTTON MARKING: Indicates button placement.



NOTCHES AND SYMBOLS: For matching seams and construction details.

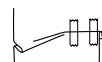
Indicates the Bustline, Waistline, Hip and/or Biceps. Measurements refer to circumference of Finished Garment (Body Measurement + Wearing Ease + Design Ease). Adjust pattern if necessary. The measurement excludes pleats, tucks, darts and seam allowances.

SEAM ALLOWANCE: 5/8" (1.5cm) included unless otherwise indicated, but not printed on tissue.

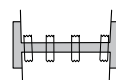
ADJUST IF NECESSARY

Lengthen or Shorten at adjustment lines (==) or where indicated on pattern. If substantial length is added, you may need to purchase additional fabric.

TO SHORTEN: Crease along adjustment line. Make a fold half the amount needed. Tape in place.



TO LENGTHEN: Slash between adjustment lines. Spread amount as needed, keeping edges parallel. Tape over paper.



When Alteration lines are not on tissue, lengthen or shorten at lower edge.

CUTTING AND MARKING

SHRINK FABRIC if not labeled pre-shrunk. Press.

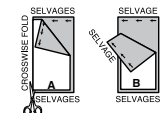
CIRCLE LAYOUT for View, Size, Fabric Width.

Use **WITH NAP** layout for fabrics with one-way designs, nap, pile or surface shading. Because most knits have surface shading, a with nap layout is used.

For **DOUBLE THICKNESS (WITH FOLD)** - fold fabric with right sides together.

*** DOUBLE THICKNESS (WITHOUT FOLD)** - For fabrics with nap, fold fabric crosswise, right sides together. Mark as shown. Cut along crosswise fold of fabric (A). Turn upper layer 180° so arrows go in same direction and place over lower layer, right sides together (B).

For **SINGLE THICKNESS** - place fabric right side up. (For Fur Pile fabrics, place pile side down.)



★ Cut other pieces first, allowing enough fabric to cut this piece. Open fabric. For "Cut 1" pieces, cut piece once on single layer of fabric with piece face up on right side of fabric.

Pattern may have cutting lines for several sizes. Select the proper cutting line or pattern pieces for your size.

Before **CUTTING** place all pieces on fabric according to layout. Pin. (**Layouts show approximate position of pattern pieces; position may vary according to your pattern size.**) Cut **ACCURATELY**, cutting notches outward.

Before removing pattern, **TRANSFER MARKINGS** and lines of construction to Wrong Side of fabric, using the Pin and Chalk Pencil method or Tracing Paper and Dressmaker Wheel. Markings needed on right side of fabric should be thread traced.

NOTE: Broken-line boxes (a! b! c!) in layouts represent pieces cut by measurements provided.

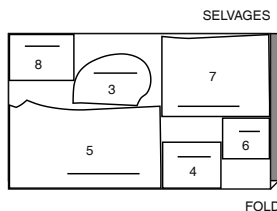
CUTTING LAYOUTS

RIGHT SIDE OF PATTERN	WRONG SIDE OF PATTERN	RIGHT SIDE OF FABRIC	WRONG SIDE OF FABRIC
-----------------------	-----------------------	----------------------	----------------------

CONTRAST A, B

use pieces: 3 4 5 6 7 8

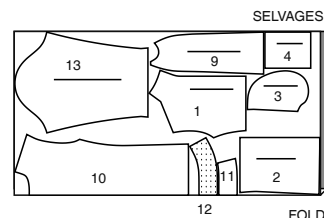
45" (115 cm)
with nap
all sizes



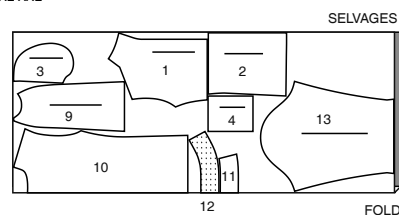
JACKET B

use pieces: 1 2 3 4 9 10 11 12 13

60" (150 cm)
without nap
sizes XS S M L



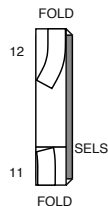
60" (150 cm)
without nap
sizes XL XXL



INTERFACING A, B

use pieces: 11 12

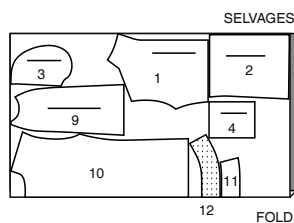
60" (150 cm)
without nap
all sizes



VEST A

use pieces: 1 2 3 4 9 10 11 12

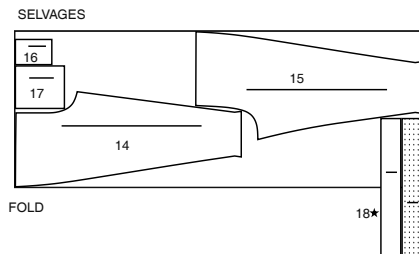
60" (150 cm)
without nap
all sizes



PANTS C

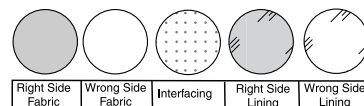
use pieces: 14 15 16 17 18

60" (150 cm)
without nap
all sizes



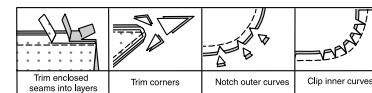
SEWING INFORMATION

FABRIC KEY



SEAM ALLOWANCES

Use 1/4" (6mm) seam allowances unless otherwise indicated.



PIN AND FIT

Pin or baste seams, **RIGHT SIDE TOGETHER**, matching notches. Fit garment before stitching major seams.

PRESS

Press seam allowances flat; then open unless otherwise stated. Clip where necessary so they lie flat.

GLOSSARY

Sewing methods in **BOLD TYPE** have Sewing Tutorial Video available. Scan **QR CODE** to watch videos:

SLEEVE - see **Armholes/Sleeves**: "sewing a set in sleeve" video.

EDGE STITCH - see **Machine Stitches**: "how to edgestitch" video.

REINFORCE - see **Machine Stitches**: "how to reinforce" video.

STAYSTITCH - see **Machine Stitches**: "how to do stay-stitching" video.

STITCH IN THE DITCH - see **Machine Stitches**: "how to stitch in the ditch" video.

TOPSTITCH - see **Machine Stitches**: "how to topstitch" video.

UNDERSTITCH - see **Machine Stitches**: "how to understitch" video.

INVISIBLE ZIPPER - see **Zipper**: "sewing an invisible zipper" video.

SLIPSTITCH - Slide needle through a folded edge, then pick up a thread of underneath fabric.

SEWING TUTORIALS



Build your skills viewing short, easy-to-follow videos at simplicity.com/sewingtutorials

PATTERN PIECES WILL BE IDENTIFIED BY NUMBERS THE FIRST TIME THEY ARE USED.

STITCH SEAMS WITH RIGHT SIDES TOGETHER UNLESS OTHERWISE STATED.

NOTE: Under each sub-heading, the first view will be illustrated, unless otherwise illustrated.

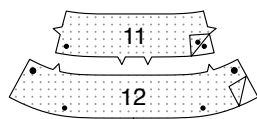
FOR KNITS

- Use a ball point or stretch needle.
- Decrease pressure on presser foot for heavy sweater knits; increase pressure for lingerie knits.
- Stretch knits need seams that are supple enough to "give" with the fabric. You can sew them with straight stitches (stretching the fabric slightly as you sew), narrow zigzag stitches or one of the stretch stitches built into many conventional machines, or on your serger.
- Some knits require very little or no pressing while sewing. Use the appropriate temperature setting. Press lightly or use steam.
- Use a twin sewing machine needle for a double stitched hem.

VEST A, JACKET B

INTERFACING

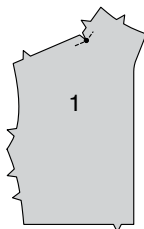
- 1.** Fuse INTERFACING to wrong side of each matching FABRIC section, following manufacturer's instructions.



FRONT

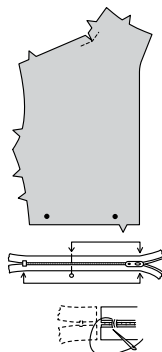
WAIST ZIPPER AND POCKET

- 2. REINFORCE** forward shoulder edge of UPPER FRONT (1) through small dot. Clip to small dot.

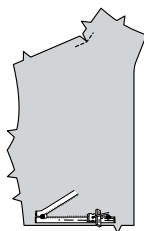


- 3. NOTE:** It may be necessary to shorten invisible zipper. To make new zipper stop, place zipper along lower opening edge between small dots, with pull tab at small dot near front edge. Mark placement of new zipper stop. Whipstitch across teeth at marking. Cut zipper 3/4" (2cm) below the new stop.

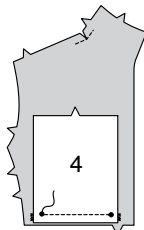
NOTE: Use special invisible zipper foot when stitching invisible zipper.



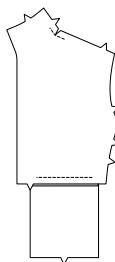
- 4.** Open the zipper and press the tape flat on the **WRONG** side unrolling the coils. Do not press the coils. (Use a low iron setting.) On outside, pin upper edge of zipper face down on lower edge of upper front. Have the coil along the seam line, the tape within the seam allowance and top stop at small dot near front edge. Hand-baste along center of the tape. Position zipper foot at the top of the zipper with left groove of the foot over coil. Stitch along tape to opposite dot. Back-stitch to reinforce.



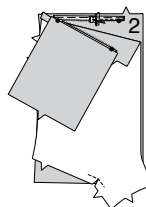
- 5.** With right sides together, pin fabric section of **UPPER POCKET (4)** to lower edge of upper front (over zipper), matching dots. Stitch between dots.



- 6.** Turn fabric pocket to inside; press.



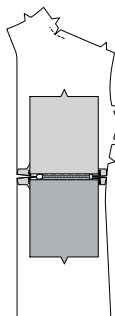
- 7.** Pin the remaining half of the zipper to the upper edge of **LOWER FRONT (2)** zipper opening in the same manner. Make sure the upper and lower edges of the fronts are even. Hand-baste along the center of the tape. Position zipper foot at the top of the zipper with right groove over the coil. Stitch along tape to the remaining dot. Back-stitch to reinforce.



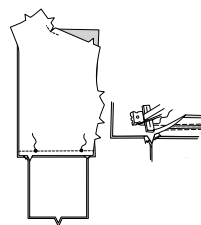
- 8.** With right sides together, pin contrast section of upper pocket (4) to upper edge of lower front (over zipper), matching dots. Stitch between dots.



- 9.** Turn contrast pocket to inside; press.



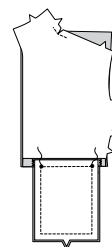
- 10.** Close zipper and check that it is invisible from the **OUTSIDE**. Pull the free ends of the zipper tape away from the seam allowance. Pin remaining seam together in front and back of zipper. Position zipper foot all the way to the **LEFT** so the needle goes down through the outer notch of the foot. Start stitching seam 1/4" (6mm) above lowest stitch and slightly to the **LEFT**. Stitch remainder of seam.



- 11.** If you prefer, open out each seam allowance at end of zipper and stitch tape to seam allowance.

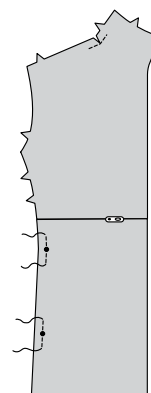


- 12.** On inside, pin pocket edges, right sides together, matching notches and dots, having raw edges even. Stitch sides and lower edge between dots.



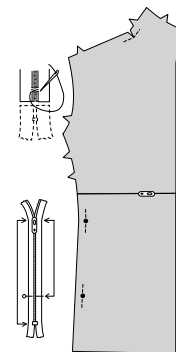
SIDE ZIPPER AND POCKET

- 13. REINFORCE** side front seam of lower front through small dots.



- 14. NOTE:** It may be necessary to shorten invisible zipper. To make new zipper stop, place zipper along opening edge with pull tab at upper small dot. Mark placement of new zipper stop. Whipstitch across teeth at marking. Cut zipper 3/4" (2cm) below the new stop.

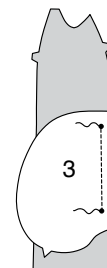
NOTE: Use special invisible zipper foot when stitching invisible zipper.



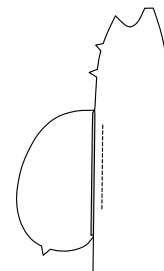
- 15.** Pin zipper to side front edge of **SIDE PANEL (9)**, right sides together, having coil at seamline and top-stop at upper dot. Baste along center of tape. Stitch zipper in place using an invisible zipper foot.



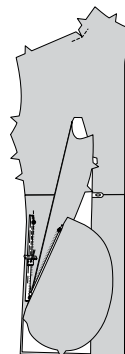
- 16.** With right sides together, pin fabric section of **POCKET (3)** to side front edge of front panel (over zipper), matching small dots. Stitch between small dots using a zipper foot.



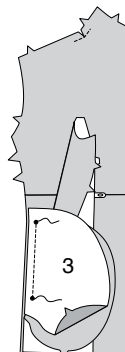
- 17.** Turn fabric pocket to inside; press.



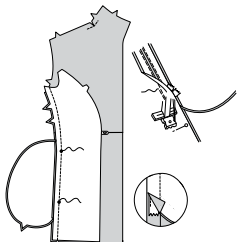
- 18.** Close zipper. Pin the other half of the zipper to side edge of lower front, right sides together, having coil along seamline and top-stop at upper dot. Make sure everything lines up. Re-pin if necessary. Open zipper. Baste along center of tape. Stitch zipper in place using an invisible zipper foot, keeping pocket free. Backstitch to secure.



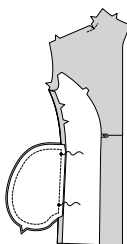
- 19.** With right sides together, pin contrast section of pocket (3) to side front edge of lower front (over zipper), matching small dots. Stitch between small dots using a regular zipper foot.



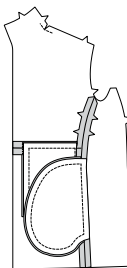
20. With right sides together, pin side panel to upper front/lower front, matching small dots. Stitch from upper and lower edges to small dots.



21. With right sides together, pin fabric pocket to contrast pocket, matching notches and dots. Stitch, pivoting at corners, ending at small dots.



22. Press seams and pockets toward front.

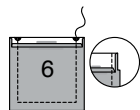


INSIDE FRONT PANEL AND POCKET

23. Press under 1/4" (6mm) on upper edge of INSIDE FRONT PANEL (5). Turn upper edge to inside along foldline, forming facing. Stitch facing close to inner edge. Baste side edges.



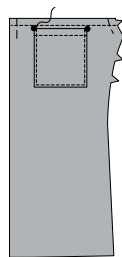
24. Press under 1/4" (6mm) on upper edge of UPPER INSIDE POCKET (6). Turn upper edge to OUTSIDE along foldline, forming facing. Stitch along seam line on raw edges. Trim seam allowance in the facing area to 1/4" (6mm).



25. Turn corners RIGHT side out, turning facing to the WRONG side; press, pressing under raw edges along stitching, folding in corners diagonally. Stitch facing close to inner edge.



26. Pin upper inside pocket to inside front panel, matching upper large dots. Stitch close to sides and lower edge.

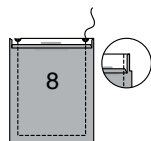


INSIDE LOWER FRONT PANEL AND POCKET

27. Press under 1/4" (6mm) on upper edge of INSIDE LOWER FRONT PANEL (7). Turn upper edge to inside along foldline, forming facing. Stitch facing close to inner edge. Baste side edges.



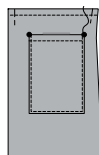
28. Press under 1/4" (6mm) on upper edge of LOWER INSIDE POCKET (8). Turn upper edge to OUTSIDE along foldline, forming facing. Stitch along seam line on raw edges. Trim seam allowance in the facing area to 1/4" (6mm).



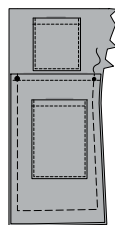
29. Turn corners RIGHT side out, turning facing to the WRONG side; press, pressing under raw edges along stitching, folding in corners diagonally. Stitch facing close to inner edge.



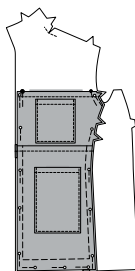
30. Pin lower inside pocket to inside lower front panel, matching large dots. Stitch close to sides and lower edge.



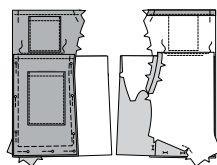
31. Pin wrong side of lower front panel/pocket to right side of inside front panel, matching lower large dot and small dots, having lower and side edges even. Baste raw edges together.



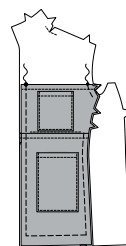
32. With wrong sides together, pin upper and lower panel to upper and lower front, matching small and large dots, having lower and side edges even.



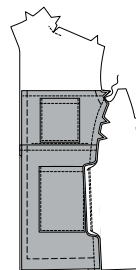
33. Lift up inside front panel, folding down upper front. With wrong sides together, stitch inside lower front panel to upper edge of waist zipper seam.



34. Turn upper front back in place. Baste raw edges together.

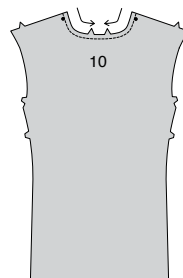


35. On inside, stitch side edges of inside panels to side front seam, being careful not to catch zipper.



BACK

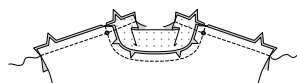
36. STAYSTITCH neck edge of BACK (10) in direction of arrows.



37. Pin NECK BAND (11) to back neck edge, matching centers and dots. Stitch, clipping back neck edge where necessary. Trim seams. Press seam toward band, turning band up.

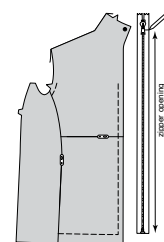


38. Pin back/band to garment front at overarm, matching notches and dots; stitch.

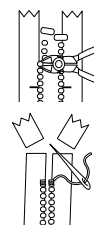


FRONT SEPARATING ZIPPER

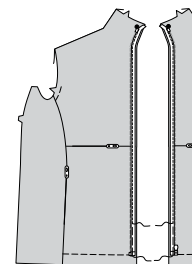
39. NOTE: It may be necessary to shorten zipper. To make new zipper stop, place closed zipper along opening edge and zipper stop at large dot. Mark placement of new zipper stop 1/8" (3mm) below seamline and bottom stop at basting.



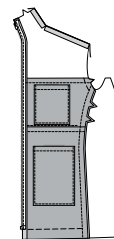
40. Remove teeth above marking for new zipper stop. Bend a straight metal eye with pliers and sew securely to each tape at new marking. OR make several whipstitches over tape at marking.



41. Open zipper. Pin right side of zipper to front opening edges, having zipper teeth just over the 5/8" (1.5cm) seam allowance and zipper stop at large dot. Baste in place, tapering upper end of zipper tape at large dot, as shown. Using an adjustable zipper foot, machine-stitch zipper in place 5/8" (1.5cm) from front edge.



42. Turn zipper to inside; press.



NECK FACING

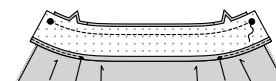
43. Press under 5/8" (1.5cm) on long unnotched edge of NECK FACING (12). Trim pressed edge to 3/8" (1cm).



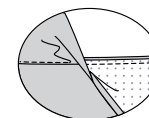
44. EDGESTITCH pressed edge of facing from ends to small dot.



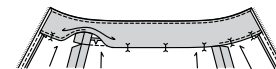
45. With right sides together, pin facing to upper edge of front and back neck band, matching notches, center backs and large dots. Stitch upper edge between dots; trim seams.



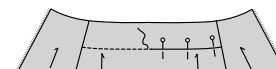
46. UNDERSTITCH facing.



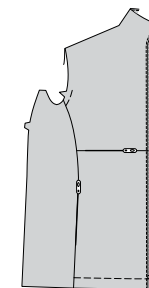
47. Turn facing to inside, turning in ends to clear zipper teeth; press. Tack front edge of facing to zipper.



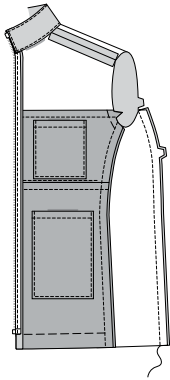
48. Pin pressed edge of neck facing just over back neck seam, as shown. Pin in place. **STITCH-IN-THE-DITCH-** Working on the RIGHT side of the fabric, "stitch-in-the-ditch", (in the groove where the neck band joins the fabric), being sure to catch in the underneath layer of the facing in the stitching.



49. On outside, stitch close to front edges of garment, stitching through zipper and front facing.



50. With right sides together, stitch side panel to back at side back.

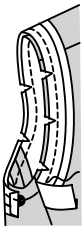


ARMHOLE FACING A

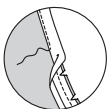
51. **NOTE:** Trim away 1/4" from armhole edges of vest before stitching seams.



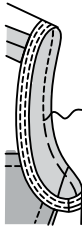
52. Open out one edge of single fold bias tape. With right sides together, pin tape to armhole edge, having raw edges even, turning under and lapping one end at large dot on side panel. Stitch in 3/8" (1cm) seam. Trim seam; clip curves.



53. Understitch by pressing tape and seam away from vest, stitching through tape and seam allowances close to seam.

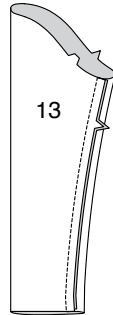


54. Turn tape to **INSIDE**; press. Baste close to inner edge of tape. On **OUTSIDE**, stitch as basted.

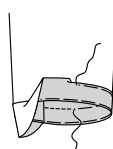


SLEEVE B

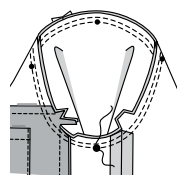
55. Stitch seam of SLEEVE (13).



56. Turn up a 1-1/4" (3.2cm) hem on lower edge of sleeve. Press under 1/4" (6mm) on raw edge. Stitch close to inner pressed edge.

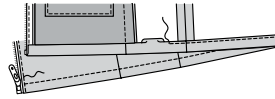


57. With right sides together, pin sleeve into armhole edge matching small dots, notches and sleeve seam to large dot on side panel; baste. Stitch. Stitch again 1/4" (6mm) away in seam allowance. Trim close to second stitching. Turn seam allowances toward sleeve.



HEM

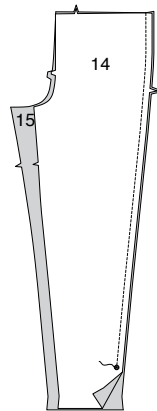
58. Turn up a 1-1/4" (3.2cm) hem on lower edge of garment. Press under 1/4" (6mm) on raw edge. Stitch close to inner pressed edge, ending at zipper stitching.



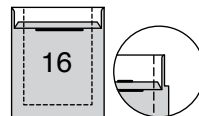
PANTS C

FRONT AND BACK

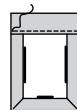
1. Pin **FRONT** (14) to **BACK** (15) at sides, matching notches and large dots. Stitch, leaving free below dots.



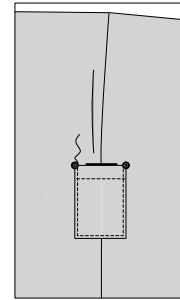
2. Press under 1/4" (6mm) on upper edge of **UPPER POCKET** (16). Turn upper edge to **OUTSIDE** along foldline, forming facing. Stitch along seam line on raw edges. Trim seam allowance in the facing area to 1/4" (6mm).



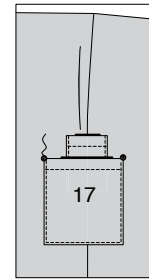
3. Turn corners **RIGHT** side out, turning facing to the **WRONG** side; press, pressing under raw edges along stitching. Stitch facing close to inner edge.



4. Pin upper pocket to pants at side, matching upper large dots. Stitch close to sides and lower edge. Prepare **LOWER POCKET** (17) in the same manner as described for upper pocket.

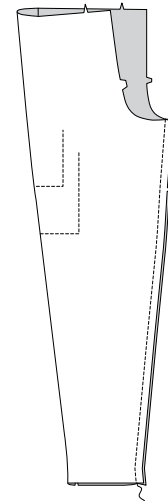


5. Pin lower pocket to pants at side (over upper pocket), matching lower large dots. Stitch close to sides and lower edge.

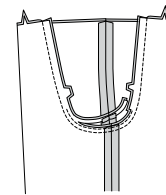


REMAINING SEAMS

6. Stitch back to front at inside leg edges.

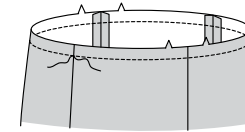


7. For center seam, turn one pant leg right side out; slip inside remaining pant leg, matching inside leg seams. Stitch. Stitch again 1/4" (6mm) away in seam allowance along curve. Trim close to second stitching.



WAISTBAND

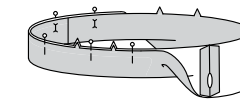
8. **STAYSTITCH** upper edge of pants.



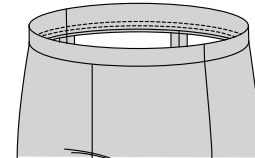
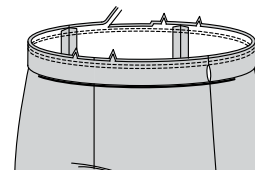
9. Pin **WAISTBAND** (18) sections, right sides together. Stitch side seam, leaving free between dots. Stitch remaining side seam.



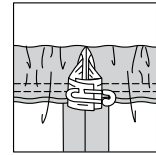
10. With wrong sides together, fold waistband in half lengthwise, matching centers and seams; press. Pin raw edges together.



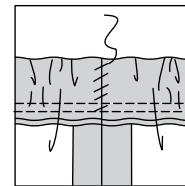
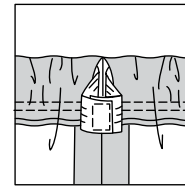
11. Pin waistband to pants, as shown, matching centers and side seams, stretching waistband to fit. Stitch. Stitch again 1/4" (6mm) away in seam allowance. Trim close to second stitching. Press seams toward pants, turning waistband up.



12. Cut elastic a comfortable waist measurement, plus 1" (2.5cm).

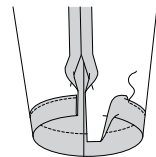


13. Insert elastic through opening in casing. Lap ends. Hold with safety pin. Try on and adjust if necessary. Stitch ends of elastic securely. **SLIPSTITCH** opening edges together.

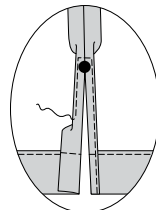


HEMS

14. Turn up a 1-1/4" (3.2cm) hem on lower edge of pants. Press under 1/4" (6mm) on raw edge. Stitch close to inner pressed edge.



15. Press under 5/8" (1.5cm) on slit opening edges. Press under 1/4" (6mm) on raw edge. Stitch, squaring stitching above opening.





Congrats!

You've completed your sewing adventure

SHARE YOUR LOOK



Post your pattern and tag us
[@simplicity_creative_group](#) and [#simplicitypatterns](#)
for a chance to be featured on our social media.

Look for more PDF patterns at [simplicity.com](https://www.simplicity.com)

Have a question or need help with your sewing project call us at
1-800-782-0323

McCall's
by **design**_{group}

McCall's ©2024 a division of IG Design Group Americas Inc. • Atlanta, GA 30342 USA www.thedesigngroup.com • All Rights Reserved. www.mccall.com • Made in the U.S.A. Fabriqué aux États-Unis.

To be used for individual private home use only and not for commercial or manufacturing purposes. • A usage privé seulement et non à des fins commerciales ou de production en série. • Para uso privado solamente, no se puede utilizar con propósitos de comercialización o de producción en serie.