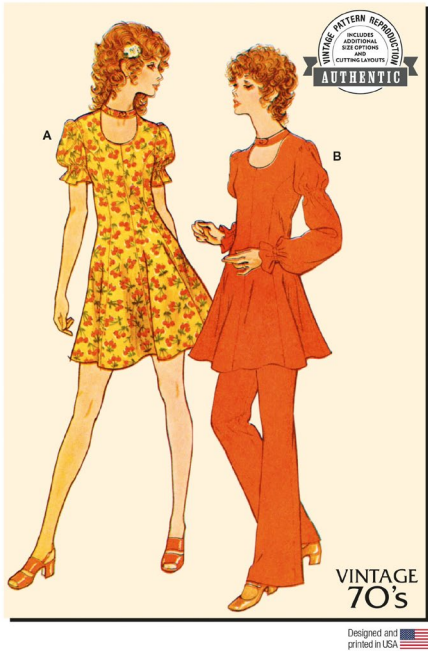


McCall's

M8465



MISSES' DRESS, TUNIC AND PANTS

Suggested Fabrics: Soft Fabrics such as Challis, Crepe, Dotted Swiss, Knitted Panné Velvet, Surah, Voile, Wool or Synthetic Jersey. **Interfacing:** Lightweight Fusible.

Notions: A,B,C: Seam binding or stretch lace (opt.). **Also for A,B:** One 22" (56cm) zipper, two hooks and eyes, one 5/8" (1.5cm) half-ball button, one pkg. of 1/2" (1.3cm) single fold bias tape. **Also for A:** 1 1/4 yds. (1.2m) of 1/4" (6mm) elastic. **Also for B:** 1 1/2 yds. (1.5m) of 1/4" (6mm) elastic. **Pants B, Panties C:** 1 yd. (1.0m) of 3/4" (2cm) elastic.

Sizes	4	6	8	10	12	14	16	18	20	22
European	30	32	34	36	38	40	42	44	46	48

BODY MEASUREMENTS: Select pattern size based on body measurements

Bust	29 1/2	30 1/2	31 1/2	32 1/2	34	36	38	40	42	44	Ins.
Waist	22	23	24	25	26 1/2	28	30	32	34	37	"
Hip-9" below waist	31 1/2	32 1/2	33 1/2	34 1/2	36	38	40	42	44	46	"
Back-neck to waist	15 1/4	15 1/2	15 3/4	16	16 1/4	16 1/2	16 3/4	17	17 1/4	17 1/2	"

View A - Dress	45**	3 3/8	4 1/8	4 1/4	4 1/2	4 3/4	4 3/4	4 3/4	4 3/4	4 3/4	Yds.
	60**	2 1/2	2 1/2	2 1/2	2 5/8	2 5/8	2 5/8	2 5/8	2 5/8	2 5/8	"

View A,B - Interfacing

20" - 1/2 yd.

View B - Tunic and Pants

	45**	5 1/2	5 1/2	5 5/8	5 5/8	5 3/4	5 7/8	6	6 1/8	6 1/8	6 1/8	Yds.
	60**	4 3/8	4 3/8	4 1/2	4 1/2	4 3/4	4 3/4	4 3/4	4 7/8	5 1/8	5 1/8	"

View C -

Dance Pants	45**	5/8	3/4	1	1 1/8	1 1/8	1 1/8	1 1/8	1 1/8	1 1/8	Yds.
	60**	5/8	5/8	5/8	5/8	5/8	5/8	3/4	3/4	3/4	"

NOTE: Please refer to the sewing instructions for **FINISHED GARMENT MEASUREMENTS**.

*with nap **without nap

Easy

ROBE, TUNIQUE ET PANTALON POUR JEUNES FEMMES

Tissus Conseillés: Tissus souples tels que Challis, Crêpe, Plumetis, Velours type panne en tricot, Tissue Surah, Voile, Laine ou Jersey synthétique. **Entoilage:** thermocollant léger.

Mercerie: A,B,C: extrafort ou dentelle extensible (facult.). **Aussi pour A,B:** 1 fermeture à glissière de 56cm, 2 agrafes, 1 bouton demi-boule de 1.5cm, 1 paquet de ruban de biais simple de 1.3cm. **Aussi pour A:** 1.2m d'élastique de 6mm. **Aussi pour B:** 1.5m d'élastique de 6mm.

Pantalon B, Culotte C: 1.0m d'élastique de 2cm.

Tailles	4	6	8	10	12	14	16	18	20	22
Françaises	32	34	36	38	40	42	44	46	48	50
Européen	30	32	34	36	38	40	42	44	46	48

MESURES DU CORPS: Choisissez la taille du patron basée sur les mesures du corps

Poitrine	75	78	80	83	87	92	97	102	107	112	cm
Taille	56	58	61	64	67	71	76	81	87	94	"
Hanches (23 cm au-dessous de la taille)	80	83	85	88	92	97	102	107	112	117	cm

Dos du cou à la taille 39 39.5 40 40.5 41.5 42 42.5 43 44 44.5 "

Modèle A - Robe	115cm*	3.0	3.8	3.9	3.9	3.9	4.0	4.2	4.2	4.3	4.3	m
	150cm*	2.3	2.3	2.3	2.3	2.3	2.4	2.4	2.4	2.4	2.4	"

Modèle A,B - Entoilage

51cm - 0.5m

Modèle B - Tunique et pantalon

	115cm*	5.0	5.0	5.1	5.1	5.3	5.4	5.5	5.6	5.6	5.6	m
	150cm*	3.9	4.0	4.1	4.1	4.2	4.2	4.3	4.5	4.7	4.7	"

Modèle C - Culotte	115cm*	0.6	0.7	0.9	0.9	0.9	1.0	1.0	1.0	1.0	1.0	m
	150cm*	0.6	0.6	0.6	0.6	0.6	0.6	0.6	0.7	0.7	0.9	"

NOTE: S'il vous plaît, reportez-vous aux instructions de couture pour les **MESURES DES VÊTEMENTS FINI**.

*avec sens **sans sens



A



B



B



C

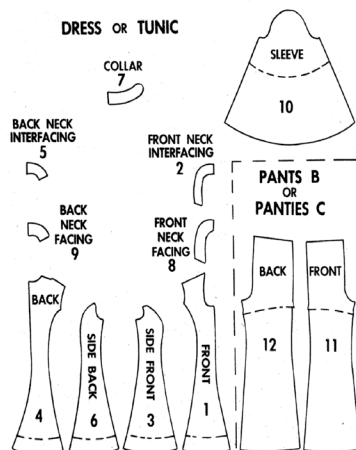
McCall's 3095



SELECT PATTERN PIECES FOR VIEW YOU HAVE CHOSEN

12 PATTERN PIECES

DRESS OR TUNIC



VIEW A — USE PIECES 1 THRU 10
VIEW B — USE PIECES 1 THRU 12
VIEW C — USE PIECES 11, 12

HOW TO USE A McCALL'S PATTERN

STUDY THE PATTERN

- Select the pieces needed for the View you have chosen.
- Check the identification markings—Number, Size, Name and View—on each piece.
- Understand the pattern markings.

Grain Line: Line with arrows indicates straight grain of fabric. Put line an even distance from finished edge (selvage).

Place on fold Fold Line: Place line on fold of fabric.

Cutting line: For cutting.

Seam Line: For sewing.

Seam Allowance: Distance between cutting and seam line is usually $\frac{1}{2}$ ".

Notches: Used for matching pattern pieces.

- Read directions carefully.

ADJUST IF NECESSARY

- A pattern is made to fit specific body measurements, allowing extra ease for comfort and style.
- If your body measurements differ from those specified on the pattern envelope, adjust the pieces before placing them on the fabric.
- To change the length, use the Easy-Rule Guide, a feature of a McCall's pattern. Compare your back waist and finished garment lengths with those listed.

To Shorten: Crease the pattern on the dotted lines of the Easy-Rule Guide. Then fold a pleat the necessary amount. Pin or tape in place.

To Lengthen: Cut the pattern on the dotted lines of the Easy-Rule Guide. Spread the necessary amount. Pin or tape over paper.

- See McCall's Sewing Book for other adjustments.

LAYOUT FOR CUTTING

- Press each pattern piece with warm, dry iron.
- Shrink fabric unless labeled pre-shrunk. Press fabric.
- Circle cutting layout for View, Size, Fabric width and type you are using (with or without nap).
- Use With Nap layout for fabrics with one-way designs, nap, pile or surface shading. Place all pieces in one direction.
- Use Without Nap layout for other fabrics. Place pieces in either direction.
- Arrange fabric for cutting as shown on layout: Double Thickness—fold fabric with Right Sides Together. Single Thickness—place fabric Right Side Up.
- Before cutting, place all pieces on fabric according to layout. Overlap margins. Pin.

CUTTING AND MARKING

- Cut through fabric and pattern on cutting line. Cut notches outward. Accurate cutting insures a better fit.
- Before removing pattern, transfer markings to Wrong Side of fabric. Although there are several ways to do this, the one which may be used quickly and safely on the widest range of fabrics is the Pin and Chalk Pencil method.

Push pins through pattern and both layers of fabric.

Turn piece so pins point upward. With ruler and chalk pencil, draw line connecting the pins.

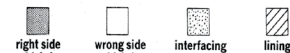
Turn piece to pattern side. Carefully pull pattern over heads of pins. Mark. Remove pins.

- See McCall's Sewing Book for other marking methods.
- If you have any questions about sewing, please write Meg Carter, The McCall Pattern Company, 230 Park Avenue, New York, New York 10017.

SEWING DIRECTIONS

READ directions for View you are making before beginning to sew.

STUDY the drawings carefully.



KEEP pattern pieces handy for reference.

HANDLE fabric as little as possible.

SEW exactly on seam lines indicated on pattern. To make a seam:

PIN two pieces of fabric, Right Sides Together, matching notches and seam lines.

BASTE, if desired, by hand or machine.

FIT garment before stitching major seams.

STITCH in direction of arrows. Use $\frac{1}{4}$ " seam allowance unless otherwise indicated.

PRESS seams open unless otherwise noted.

FINISH raw edges of seams, facings and hems to prevent raveling:



3095

DRESS A TUNIC B

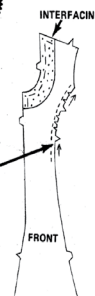
1. FRONT

INTERFACING

Baste interfacing to WRONG Side of fronts.

STAY-STITCHING

Stay-stitch inward curve on fronts as illustrated. To STAY-STITCH: machine-stitch thru a single thickness of fabric, using regular stitch length, $\frac{1}{2}$ " from cut edge in direction of arrows. Clip to stay-stitching.

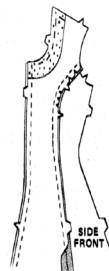


SIDE FRONT SEAMS

Stitch fronts to side fronts.

CENTER FRONT SEAM

Stitch center front seam. Cut interfacing close to stitching.

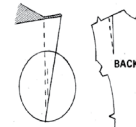


2. BACK

DARTS

To make a dart, fold fabric RIGHT SIDES TOGETHER, match markings, and pin.

Stitch. Backstitch to secure threads. Press toward center.



CONTINUED ON OTHER SIDE

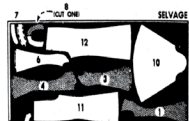
CUTTING LAYOUTS

Disregard any perforations on pattern pieces.

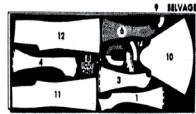
VIEW B — TUNIC AND PANTS

44" 45" FABRIC WITHOUT NAP

SIZES 8-10-12

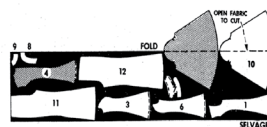


SIZES 14-16



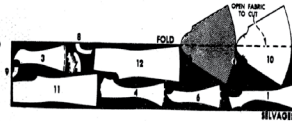
58" 60" FABRIC WITH or WITHOUT NAP

SIZES 8-10-12



58" 60" FABRIC WITH or WITHOUT NAP (CONTINUED)

SIZES 14-16



VIEW A or B INTERFACING

45" WOVEN INTERFACING

ALL SIZES



44" 45" FABRIC WITHOUT NAP

(CONTINUED)

SIZES 14-16



58" 60" FABRIC WITH or WITHOUT NAP

SIZES 8-10-12-14



SIZES 16



VIEW C — PANTIES

44" 45" FABRIC WITHOUT NAP

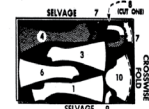
SIZES 8-10-12



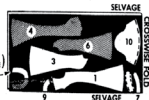
VIEW A — DRESS

35" 36" FABRIC WITHOUT NAP

SIZES 8-10-12

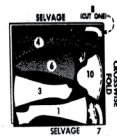


SIZES 14-16



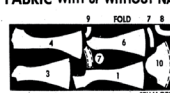
44" 45" FABRIC WITHOUT NAP

ALL SIZES



58" 60" FABRIC WITH or WITHOUT NAP

ALL SIZES



2. CONTINUED

INTERFACING

Baste interfacing to WRONG SIDE of backs.

STAY-STITCHING

STAY-STITCH inward curve on backs as illustrated. Clip to stay-stitching.

SIDE BACK SEAMS

Stitch backs to side backs.

CENTER BACK SEAM

Stitch center back seam to circle. Machine-baste seam above circle.

ZIPPER

On INSIDE, center zipper face down over seam, with pull-tab 1" from neck edge. Hand-baste.

On OUTSIDE, stitch 1/4" from seam, using a zipper foot. Remove basting.

3. SHOULDER SEAMS

Stitch front to back at shoulders.

Cut interfacing close to stitching.

4. NECKLINE FINISH

COLLAR

Mark center fronts.

Pin interfacing to WRONG SIDE of collars. Cut upper corners diagonally to 1/4" INSIDE the seam line as illustrated. Hand-baste.

4. CONTINUED

Stitch facings to collars along outer edges, RIGHT SIDES TOGETHER, leaving lower edge free from back edge to circle as illustrated. Clip to circle.

To reduce bulk, GRADE SEAM ALLOWANCES: cut upper corners diagonally. Cut seam allowances to graduated widths. Cut interfacing close to stitching. Clip curves.

Turn collars RIGHT SIDE OUT. Press.

Baste free edges of collars to back neck edges, RIGHT SIDES TOGETHER, having back edges even and collar circles at shoulder seams.

NECK FACING

Stitch front neck facing to back neck facings at shoulders.

Stitch 1/4" from curved outer edge. Finish raw edge: see SEWING DIRECTIONS.

Pin facing to neck edge, RIGHT SIDES TOGETHER. (Facing extends 5/8" beyond back edges.) Stitch.

GRADE SEAM ALLOWANCES. Clip curves.

Press facing and seam allowances away from neck. UNDERSTITCH to keep facing from rolling out by stitching thru facing and seam allowances close to seam line with facing up.

Turn facing to INSIDE. Press. Catch-stitch facing to seams. Turn in back edges and hem to zipper tapes.

5. SIDE SEAMS

Stitch front to back at sides.

6. SLEEVES

SLEEVE PREPARATION

To gather in extra fullness in sleeve cap, machine-baste along lines indicated on pattern thru single thickness of fabric.

To make casings, pin single fold bias tape between casing lines indicated on pattern, WRONG SIDES TOGETHER. Stitch close to edges.

Cut a length of elastic a comfortable upper arm measurement, plus 1-3/4". For SLEEVE B, cut another length of elastic a comfortable wrist measurement, plus 1-3/4".

Insert elastic thru casings, allowing elastic to extend 1/4" beyond casing. Stitch across ends of elastic.

Stitch sleeve seam.

Finish lower edge with narrow hem as follows: stitch 1/8" from lower edge. Turn under raw edge on line of stitching. Press. Turn under 1/4" and stitch in place, OR, finish by hand. Press.

SETTING SLEEVE INTO ARMHOLE

Turn sleeve to RIGHT SIDE.

Place sleeve into armhole, with RIGHT SIDES TOGETHER. Pin, matching underarm seams, small circles, and LARGE circle to shoulder seam. Draw up and adjust gathers to fit, wrapping thread ends around pins.

Baste, easing in sleeve below small circles to fit. Stitch with sleeve uppermost. Press seam allowances together. Turn seam toward sleeve.

7. FINISHING

COLLAR BUTTON

Lap RIGHT front end of collar over LEFT, matching center fronts. Sew button to position indicated on RIGHT end of collar, tacking it to left end as you sew on button.

HOOKS & EYES

Sew a hook and eye at neck seam and to upper edge of collar as illustrated.

HEM

Allow garment to hang for several days.

Try on garment. Mark hemline.

Turn up lower edge for hem. Hand-baste along fold. Cut hem to even width.

Machine-baste 1/4" from raw edge. Pull up bobbin thread to ease in fullness. Press.

Finish raw edge same as neck facing. Sew with INVISIBLE STITCH: turn hem back on garment. Pick up a thread of garment; then pick up a thread of hem diagonally above.

OR, use seam binding or stretch lace.

PANTS

PANTIES

1. SEAMS

LEG SEAMS

Stitch fronts to backs at sides.

Stitch inside leg seams.

CENTER SEAM

Put one leg inside the other, having RIGHT SIDES TOGETHER. Stitch center seam, matching inside leg seams.

To reinforce curve, stitch again over previous stitching between notches. Cut seam allowances to 3/8" between notches.

2. CASING AND ELASTIC

Turn down top of pants or panties on casing line. Press. Stitch close to edge.

Turn in 3/8" on raw edge and stitch to pants or panties, easing and stretching casing to fit and leaving an opening at center back to insert elastic.

Cut elastic a comfortable waist measurement, plus 1/2".

Insert elastic thru casing. Lap ends of elastic 1/2" and sew together securely.

Stitch opening in casing.

3. FINISHING

HEMS

Turn up lower edges on hemlines. Hand-baste along folds.

Machine-baste 1/4" from upper edges. Pull up bobbin thread to ease in fullness. Press.

Finish raw edges: see SEWING DIRECTIONS.

Sew with INVISIBLE STITCH: turn hem back on pants. Pick up a thread of pants; then pick up a thread of hem diagonally above.

OR, use seam binding or stretch lace.

HEMS

Turn up lower edges on hemlines. Hand-baste along folds. Press.

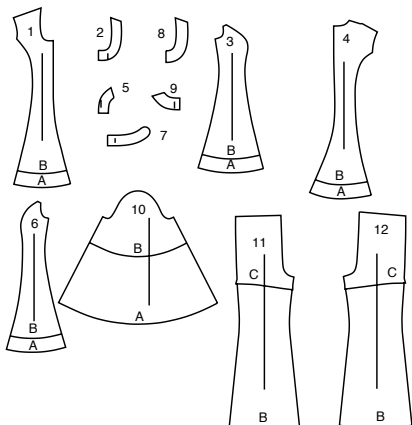
Stitch 1/4" from upper edges. Finish raw edges: see SEWING DIRECTIONS.

Sew with INVISIBLE STITCH: turn hem back on panties. Pick up a thread of panties; then pick up a thread of hem diagonally above.

OR, use seam binding or stretch lace.

SUPPLEMENTAL CUTTING LAYOUTS

12 PATTERN PIECES



- 1 FRONT (FOR DRESS OR TUNIC)
2 FRONT NECK INTERFACING
3 SIDE FRONT (FOR DRESS OR TUNIC)
4 BACK (FOR DRESS OR TUNIC)
5 BACK NECK INTERFACING
6 SIDE BACK
7 COLLAR
8 FRONT NECK FACING
9 BACK NECK FACING
10 SLEEVE
11 PANTS OR PANTIES FRONT
12 PANTS OR PANTIES BACK

Sizes	4	6	8	10	12	14	16	18	20	22
European	30	32	34	36	38	40	42	44	46	48

FINISHED GARMENT MEASUREMENTS (Includes Design and Wearing Ease)										
View A,B Bust	32½	33½	34½	35½	37½	39½	41½	43½	45½	47½ Yds.
View A,B Waist	25½	26½	27½	28½	30½	32½	34½	36½	38½	40½ "
View B,C Hip	32	33	34	35	36½	38½	40½	42½	44½	46½ "
Width, lower edge										
View A Dress	83½	84½	85½	86½	88	90	92	94	96	98 Yds.
View B Tunic	69½	70½	71½	72½	74	76	78	80	82	84 "
Width, each leg										
View B Pants	25½	26	26½	27½	28½	29	29½	30½	31	31½ Yds.
View C Panties	20½	21	21½	22½	23½	24½	26	27½	28½	29½ "
Finished back length from base of neck										
View A Dress	33½	34	34½	34½	34½	35	35½	35½	35½	36 Yds.
View B Tunic	30½	31	31½	31½	31½	32	32½	32½	32½	33 "
Finished side length from waist										
View B Pants	39½	39½	39½	40	40½	40½	41	41½	41½	41½ Yds.
View C Panties	10½	10½	10½	11	11½	11½	12	12½	12½	"

PATTERN MARKINGS

GRAINLINE: Place on straight grain of fabric, parallel to selvage or fold.

FOLDLINE: Place line on fold of fabric.

BUTTONHOLE MARKING: Indicates exact length and placement of buttonholes.

BUTTON MARKING: Indicates button placement.

NOTCHES AND SYMBOLS: For matching seams and construction details.

Indicates the Bustline, Waistline, Hip and/or Biceps. Measurements refer to circumference of Finished Garment (Body Measurement + Wearing Ease + Design Ease). Adjust pattern if necessary. The measurement excludes pleats, tucks, darts and seam allowances.

SEAM ALLOWANCE: 5/8" (1.5cm) included unless otherwise indicated, but not printed on tissue.

ADJUST IF NECESSARY

Lengthen or Shorten at adjustment lines (==) or where indicated on pattern. If substantial length is added, you may need to purchase additional fabric.

TO SHORTEN: Crease along adjustment line. Make a fold half the amount needed. Tape in place.

TO LENGTHEN: Slash between adjustment lines. Spread amount as needed, keeping edges parallel. Tape over paper.

When Alteration lines are not on tissue, lengthen or shorten at lower edge.

CUTTING AND MARKING

★ Cut other pieces first, allowing enough fabric to cut this piece. Open fabric. For "Cut 1" pieces, cut piece once on single layer of fabric with piece face up on right side of fabric.

Pattern may have cutting lines for several sizes. Select the proper cutting line or pattern pieces for your size.

Before **CUTTING** place all pieces on fabric according to layout. Pin. (**Layouts show approximate position of pattern pieces; position may vary according to your pattern size.**) Cut **ACCURATELY**, cutting notches outward.

Before removing pattern, **TRANSFER MARKINGS** and lines of construction to Wrong Side of fabric, using the Pin and Chalk Pencil method or Tracing Paper and Dressmaker Wheel. Markings needed on right side of fabric should be thread traced.

NOTE: Broken-line boxes (a! b! c!) in layouts represent pieces cut by measurements provided.

SHRINK FABRIC if not labeled pre-shrunk. Press.

CIRCLE LAYOUT for View, Size, Fabric Width.

Use **WITH NAP** layout for fabrics with one-way designs, nap, pile or surface shading. Because most knits have surface shading, a with nap layout is used.

For **DOUBLE THICKNESS (WITH FOLD)** - fold fabric with right sides together.

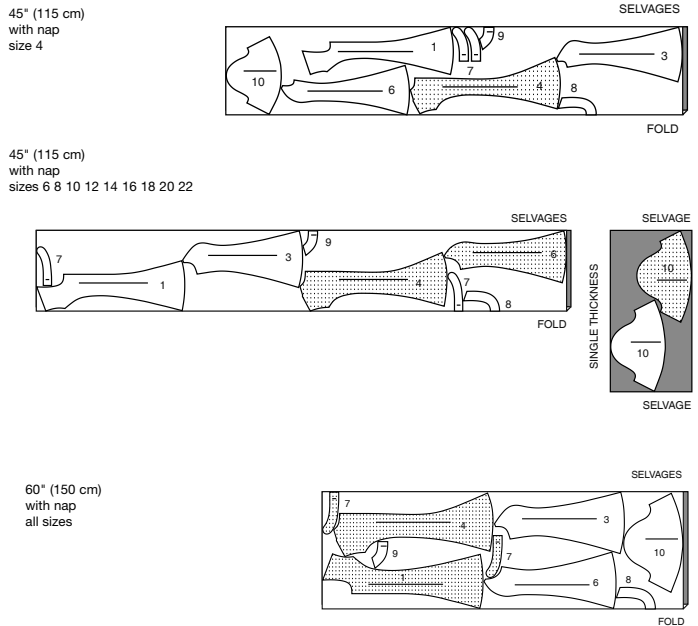
✳ **DOUBLE THICKNESS (WITHOUT FOLD)** - For fabrics with nap, fold fabric crosswise, right sides together. Mark as shown. Cut along crosswise fold of fabric (A). Turn upper layer 180° so arrows go in same direction and place over lower layer, right sides together (B).

For **SINGLE THICKNESS** - place fabric right side up. (For Fur Pile fabrics, place pile side down.)

CUTTING LAYOUTS

VIEW A - DRESS

use pieces: 1 3 4 6 7 8 9 10



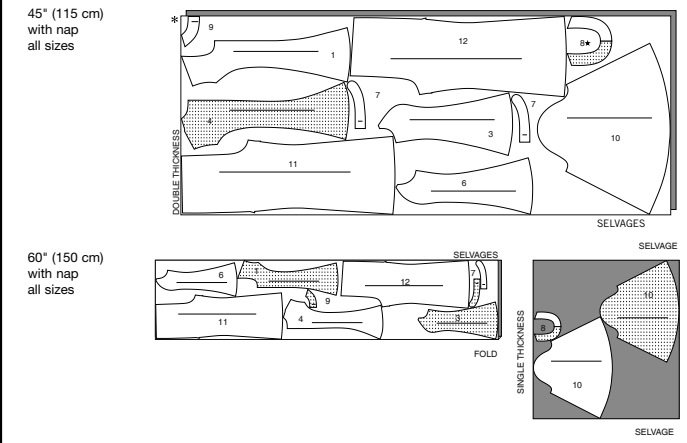
A, B INTERFACING

use pieces: 2 5 7



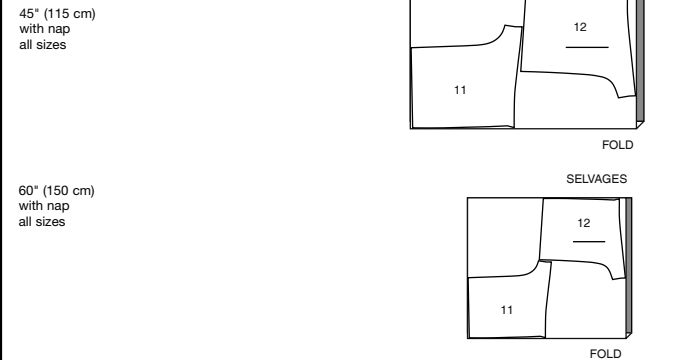
B - TUNIC AND PANTS

use pieces: 1 3 4 6 7 8 9 10 11 12



VIEW C - DANCE PANTS

use pieces: 11 12





Congrats!

You've completed your sewing adventure

SHARE YOUR LOOK



Post your pattern and tag us
[@simplicity_creative_group](#) and [#simplicitypatterns](#)
for a chance to be featured on our social media.

Look for more PDF patterns at [simplicity.com](https://www.simplicity.com)

Have a question or need help with your sewing project call us at
1-800-782-0323

McCall's
by **design**_{group}

McCall's ©2024 a division of IG Design Group Americas Inc. • Atlanta, GA 30342 USA www.thedesigngroup.com • All Rights Reserved. www.mccall.com • Made in the U.S.A. Fabriqué aux États-Unis.

To be used for individual private home use only and not for commercial or manufacturing purposes. • A usage privé seulement et non à des fins commerciales ou de production en série. • Para uso privado solamente, no se puede utilizar con propósitos de comercialización o de producción en serie.