

McCall's

M8462



Designed and
printed in USA

Average

GIRLS' AND BOY'S SHIRT, SHORTS AND PANTS AND GIRL'S DRESS

Suggested Fabrics: Chambray, Cotton Blends, Denim, Twill. **Interfacing:** Lightweight Fusible.

Notions: A,B: $\frac{5}{8}$ " (1.5cm) buttons: Six for A,10 for B. **Also for B:** $\frac{3}{4}$ yd. (0.7m) of 1" (2.5cm) elastic. C,D: One 7" (18cm) zipper (cut to fit), three $\frac{3}{4}$ " (2cm) buttons. **Also for D:** Two 7" (18cm) exposed zippers (cut to fit).

Sizes	7	8	10	12	14	
BODY MEASUREMENTS: Select pattern size based on body measurements						
Chest	26	27	28½	30	32	Ins.
Waist	23	23½	24½	25½	26½	"
Hip	27	28	30	32	34	"
Back-neck to waist	11½	12	12¾	13½	14¼	"
Height	50	52	56	58½	61	"
Shirt A	45** 60**	1½ ¾	1½ 1	1½ 1	1½ 1	Yds. "
Interfacing	20" - ¾ yd.					
Dress B	45** 60**	1½ 1¾	1½ 1¾	2 1½	2½ 1½	Yds. "
Interfacing	20"	1	1	1½	1½	"
Shorts C	45** 60**	1½ 1	1½ 1	1½ 1	1½ 1	Yds. "
Interfacing C,D	20" - ¾ yd.					
Pants D	45** 60**	1½ 1¾	1½ 1¾	2 1½	2½ 1½	Yds. "
FINISHED GARMENT MEASUREMENTS (Includes Design and Wearing Ease)						
A,B Chest	32½	33½	35	36½	38½	Ins.
A,B Waist	32½	33½	35	36½	38½	"
C,D Waist	22½	23½	25	26½	28½	"
C,D Hip	29	30	31½	33	35	"
Width, lower edge						
Shirt A	34½	35½	37½	39½	41½	Ins.
Dress B	42	43	45	47	49	"
Width, each leg						
Shorts C	19½	19½	20	20½	21	Ins.
Pants D	15	16½	17	17½	18	"
Finished back length from base of neck						
Shirt A	13¾	15½	17½	19½	21½	Ins.
Dress B	26¼	28	30	32	34	"
Finished side length from waist						
Shorts C	12½	13¼	14	14¾	15½	Ins.
Pants D	29¾	31¼	34½	37¾	38¾	"

*with nap **without nap

Moins Facile

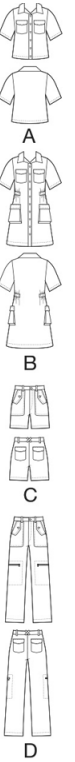
CHEMISE, SHORT ET PANTALON POUR FILLETES ET GARÇONNETS ET ROBE POUR FILLETES

Tissus Conseillés: Chambray, Cotonnades, Denim, Twill. **Entoilage:** Thermocollant léger.

Mercerie: A,B: Boutons de 1.5cm: 6 pour A,10 pour B. **Aussi pour B:** 0.7m d'élastique de 2.5cm. C,D: 1 fermeture à glissière de 18cm (coupée pour ajuster), 3 boutons de 2cm. **Aussi pour D:** 1 fermeture à glissière exposée (coupée pour ajuster).

Tailles	7	8	10	12	14	
MESURES DU CORPS: Choisissez la taille du patron basée sur les mesures du corps						
Poitrine	66	68.5	72.5	76	81.5	cm
Taille	58.5	59.5	62	65	67.5	"
Hanches	68.5	71	76	81.5	86.5	"
Dos du cou à la taille	29	30.5	32.5	34.5	36	"
Hauteur	127	132	143	149	155	"
Chemise A	115cm* 150cm*	1.0 0.8	1.0 0.8	1.1 0.9	1.1 0.9	m "
Entoilage	51cm - 0.7m					
Robe B	115cm* 150cm*	1.6 1.3	1.7 1.3	1.8 1.4	1.9 1.4	m "
Entoilage	51cm	0.9	0.9	1.0	1.0	"
Short C	115cm* 150cm*	1.0 0.8	1.0 0.8	1.0 0.8	1.1 0.8	m "
Entoilage C,D	51cm - 0.6m					
Pantalons D	115cm* 150cm*	1.7 1.3	1.7 1.3	1.8 1.4	1.9 1.5	m "
MESURES DES VÊTEMENTS FINI (Motif et aisance de port compris)						
A,B Poitrine	83	85	89	93	98	cm
A,B Taille	83	85	89	93	98	"
C,D Taille	57	60	64	67	72	"
C,D Hanches	74	76	80	84	89	"
Largeur à l'ourlet						
Chemise A	88	90	95	100	105	cm
Robe B	107	109	114	119	124	"
Largeur, chaque jambe						
Shorts C	49	50	51	52	53	cm
Pantalons D	38	42	43	44	46	"
Longueur finie - dos, votre nuque à l'ourlet						
Chemise A	35	39	44	50	55	cm
Robe B	67	71	76	81	86	"
Longueur finie - côté, taille à l'ourlet						
Shorts C	32	34	36	37	39	cm
Pantalons D	76	79	88	96	98	"

*avec sens **sans sens



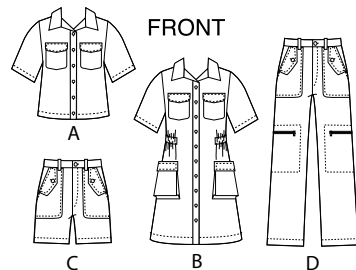
M8462

Page 1 of 4

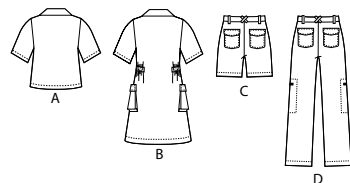
McCall's®

English

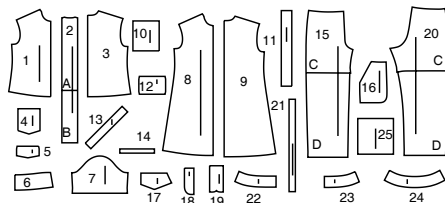
1-800-782-0323



BACK

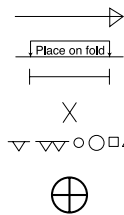


25 PATTERN PIECES



- 1 Front-A
- 2 Placket-A,B
- 3 Back-A
- 4 Pocket-A,B,C,D
- 5 Flap-A,B,C,D
- 6 Collar-A,B
- 7 Sleeve-A,B
- 8 Front-B
- 9 Back-B
- 10 Lower Pocket-B
- 11 Gusset for Lower Pocket-B
- 12 Lower Flap-B
- 13 Casing-B
- 14 Guide for Elastic-B
- 15 Pants Front-C,D
- 16 Pocket-C,D
- 17 Flap-C,D
- 18 Fly Facing-C,D
- 19 Fly-C,D
- 20 Pants Back-C,D
- 21 Carriers-C,D
- 22 Right Front Waistband-C,D
- 23 Left Front Waistband-C,D
- 24 Back Waistband-C,D
- 25 Lower Pocket-D

PATTERN MARKINGS



GRAINLINE: Place on straight grain of fabric, parallel to selvage or fold.

FOLDLINE: Place line on fold of fabric.

BUTTONHOLE MARKING: Indicates exact length and placement of buttonholes.

BUTTON MARKING: Indicates button placement.

NOTCHES AND SYMBOLS: For matching seams and construction details.

Indicates the Bustline, Waistline, Hip and/or Biceps. Measurements refer to circumference of Finished Garment (Body Measurement + Wearing Ease + Design Ease). Adjust pattern if necessary. The measurement excludes pleats, tucks, darts and seam allowances.

SEAM ALLOWANCE: 5/8" (1.5cm) included unless otherwise indicated, but not printed on tissue.

ADJUST IF NECESSARY

Lengthen or Shorten at adjustment lines (==) or where indicated on pattern. If substantial length is added, you may need to purchase additional fabric.

TO SHORTEN: Crease along adjustment line. Make a fold half the amount needed. Tape in place.

TO LENGTHEN: Slash between adjustment lines. Spread amount as needed, keeping edges parallel. Tape over paper.

When Alteration lines are not on tissue, lengthen or shorten at lower edge.

CUTTING AND MARKING

SHRINK FABRIC if not labeled pre-shrunk. Press.

CIRCLE LAYOUT for View, Size, Fabric Width.

Use **WITH NAP** layout for fabrics with one-way designs, nap, pile or surface shading. Because most knits have surface shading, a with nap layout is used.

For **DOUBLE THICKNESS (WITH FOLD)** - fold fabric with right sides together.

*** DOUBLE THICKNESS (WITHOUT FOLD)** - For fabrics with nap, fold fabric crosswise, right sides together. Mark as shown. Cut along crosswise fold of fabric (A). Turn upper layer 180° so arrows go in same direction and place over lower layer, right sides together (B).

For **SINGLE THICKNESS** - place fabric right side up. (For Fur Pile fabrics, place pile side down.)

★ Cut other pieces first, allowing enough fabric to cut this piece. Open fabric. For "Cut 1" pieces, cut piece once on single layer of fabric with piece face up on right side of fabric.

Pattern may have cutting lines for several sizes. Select the proper cutting line or pattern pieces for your size.

Before **CUTTING** place all pieces on fabric according to layout. Pin. (Layouts show approximate position of pattern pieces; position may vary according to your pattern size.) Cut **ACCURATELY**, cutting notches outward.

Before removing pattern, **TRANSFER MARKINGS** and lines of construction to Wrong Side of fabric, using the Pin and Chalk Pencil method or Tracing Paper and Dressmaker Wheel. Markings needed on right side of fabric should be thread traced.

NOTE: Broken-line boxes (a! b! c!) in layouts represent pieces cut by measurements provided.

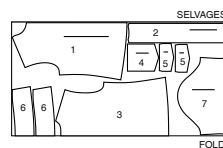
CUTTING LAYOUTS

RIGHT SIDE OF PATTERN	WRONG SIDE OF PATTERN	RIGHT SIDE OF FABRIC	WRONG SIDE OF FABRIC
-----------------------	-----------------------	----------------------	----------------------

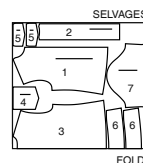
SHIRT A

use pieces: 1 2 3 4 5 6 7

45" (115 cm)
with nap
all sizes



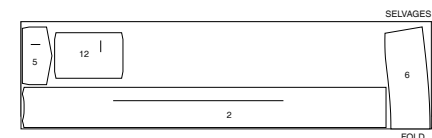
60" (150 cm)
with nap
all sizes



INTERFACING B

use pieces: 2 5 6 12

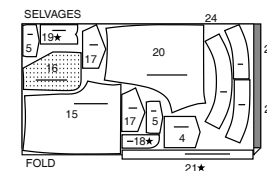
20" (51 cm)
all sizes



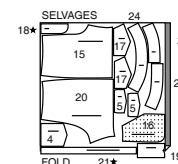
SHORTS C

use pieces: 4 5 15 16 17 18 19 20 21 22 23 24

45" (115 cm)
with nap
all sizes



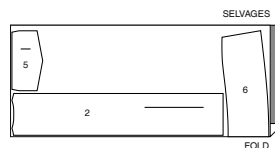
60" (150 cm)
with nap
all sizes



INTERFACING A

use pieces: 2 5 6

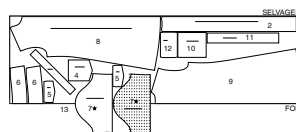
20" (51 cm)
all sizes



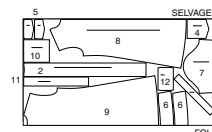
DRESS B

use pieces: 2 4 5 6 7 8 9 10 11 12 13

45" (115 cm)
with nap
all sizes



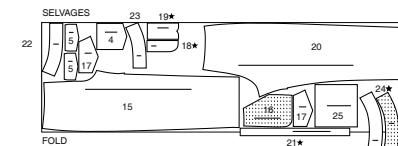
60" (150 cm)
with nap
all sizes



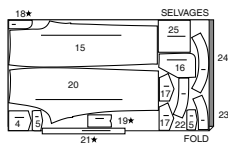
PANTS D

use pieces: 4 5 15 16 17 18 19 20 21 22 23 24 25

45" (115 cm)
with nap
all sizes

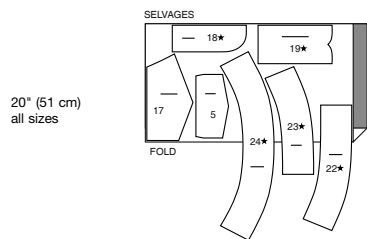


60" (150 cm)
with nap
all sizes



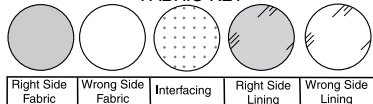
INTERFACING C,D

use pieces: 5 17 18 19 22 23 24



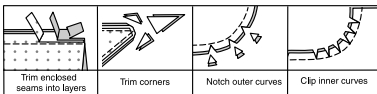
SEWING INFORMATION

FABRIC KEY



SEAM ALLOWANCES

Use 5/8" (1.5cm) seam allowances unless otherwise indicated.



PIN AND FIT

Pin or baste seams, **RIGHT SIDE TOGETHER**, matching notches. Fit garment before stitching major seams.

PRESS

Press seam allowances flat; then open unless otherwise stated. Clip where necessary so they lie flat.

GLOSSARY

Read **General Directions** on page 1 before you begin.

EDGESTITCH - see **how to edgestitch** video.

REINFORCE - see **how to reinforce** video.

BELT LOOP/CARRIER - see **how to sew belt loops** video.

STAYSTITCH - see **how to do stay-stitching** video.

STITCH IN THE DITCH - see **how to stitch in the ditch** video.

TOPSTITCH - see **how to topstitch** video.

UNDERSTITCH - see **how to understitch** video.

FINISH - Stitch 1/4" (6mm) from raw edge and finish with one of the following: (1) Pink OR (2) Overcast OR (3) Turn in along stitching and stitch close to fold OR (4) Overlock.

OPTIONAL FOR HEMS: Apply Seam Binding.

SLIPSTITCH - Slide needle through a folded edge, then pick up a thread of underneath fabric.

SEWING TUTORIALS



Build your skills viewing short, easy-to-follow videos at simplicity.com/sewingtutorials

PATTERN PIECES WILL BE IDENTIFIED BY NUMBERS THE FIRST TIME THEY ARE USED.

STITCH SEAMS WITH RIGHT SIDES TOGETHER UNLESS OTHERWISE STATED.

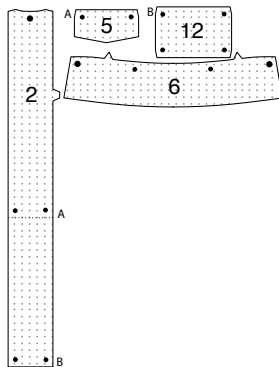
SEWING DIRECTIONS

SHIRT A, DRESS B

NOTE: Under each sub-heading, View A will be illustrated unless otherwise indicated.

INTERFACING

1. Fuse **INTERFACING** to wrong side of all matching **FABRIC** pieces, following manufacturer's instructions.

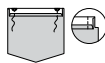


FRONT AND BACK

2. Turn in 1/4" (6mm) on upper edge of each **POCKET** (4) section. Press.



3. Turn upper edge to outside along foldline. Stitch ends. Trim.



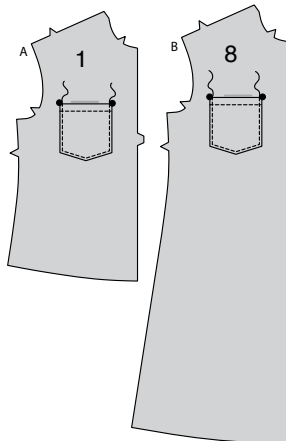
4. Turn upper edge of pocket to inside, turning in remaining seam allowances and diagonally folding corners. Press.
Baste close to inner pressed edge.



5. **TOPSTITCH** along basting.



6. Pin pocket to **FRONT** (1) OR **BACK** (8), matching symbols. **EDGESTITCH** side and lower edges, reinforcing upper ends.



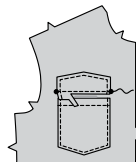
7. For each flap, stitch uninterfaced **FLAP** (5) to interfaced flap sections, leaving upper edge open. Trim.



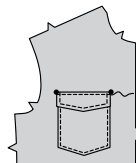
8. Turn right side out. Press. Baste raw edges together. **TOPSTITCH** finished edges of flap.



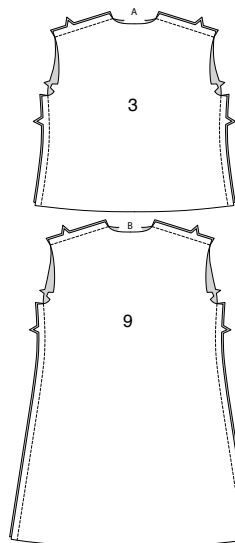
9. Pin flap (interfaced side up) to front sections, placing seamline along stitching line. Baste. Stitch along seamline between small dots. Trim flap seam allowance to a scant 1/4" (6mm), being careful not to cut garment.



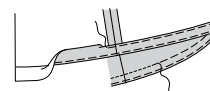
10. Turn flap down. Press. **TOPSTITCH** upper edge of flap, encasing trimmed edge.



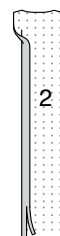
11. With right sides together, stitch front to **BACK** (3) OR (9) at shoulders and sides.



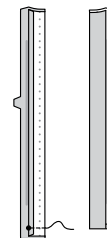
12. Turn up hem on lower edge of garment. Baste close to fold. Turn in 1/4" (6mm) on raw edge, easing in fullness if necessary. Baste hem in place close to upper edge. Press
TOPSTITCH hem along upper basting, as shown.



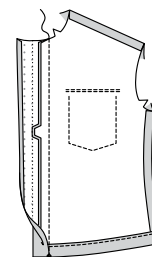
13. Turn in seam allowance on long unnotched edge of **PLACKET** (2); press. Trim pressed seam allowance to 3/8" (9mm).



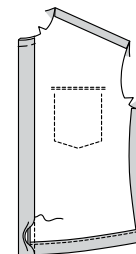
14. With right sides together, fold front band along foldline. Stitch lower edge to large dot. Trim. Turn; press.



15. Pin placket to front, having raw edges even. Stitch, keeping pressed edge free. Trim. Press seam toward placket.

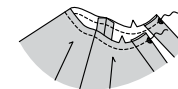


16. **SLIPSTITCH** pressed edge of placket over seam. Baste neck edge.
EDGESTITCH pressed edge if you prefer.

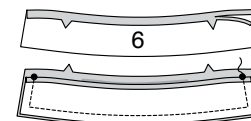


COLLAR

17. **STAYSTITCH** neck edge of garment.

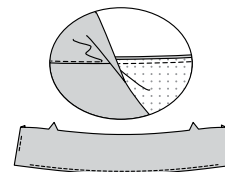


18. Press under notched edge of **COLLAR** (6) facing. Trim. Stitch collar sections together, leaving notched edge open. Trim.

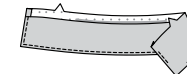


19. **UNDERSTITCH** collar.

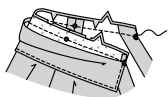
NOTE: Under-stitching will not be shown in further illustrations.



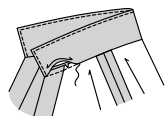
20. Turn. Press. **EDGESTITCH** finished edges of collar.



21. Pin collar to neck edge, placing small dots at shoulder seams, clipping shirt neck edge where necessary. Stitch, keeping pressed edge free. Trim.

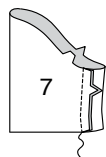


22. Press seam toward collar. Pressing collar out. **SLIPSTITCH** pressed edge over seam.

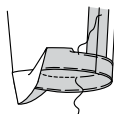


SLEEVES

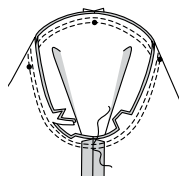
23. Stitch SLEEVE (7) seam.



24. Turn up sleeve hem. Baste close to fold. Turn under 1/4" (6mm) on raw edge. Sew hem in place, easing in fullness if necessary. Press.



25. With right sides together, pin sleeve into armhole, placing middle small dot at shoulder seam, baste. Stitch. Stitch again 1/4" (6mm) away in seam allowance. Trim close to stitching. Press seam allowances flat. Turn seam toward sleeve.

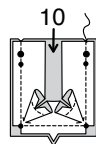


LOWER POCKETS B

26. **REINFORCE** side edges of GUSSET FOR LOWER POCKET (11) through inner small dots, as shown. Clip to small dots.



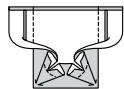
27. With right sides together, pin gusset to LOWER POCKET (10) at sides, matching small dots. Baste. Stitch, pivoting at small dots, as shown.



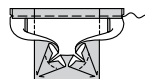
28. Turn gusset to inside. Press.



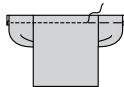
29. Turn in 1/4" (6mm) on upper edge of pocket. Press. Turn upper edge to outside along foldline. Stitch ends. Trim.



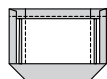
30. Turn upper edge to inside along foldline. Press. Baste close to inner pressed edge.



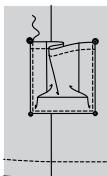
31. **TOPSTITCH** along basting.



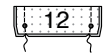
32. Turn in seam allowance on side and lower edges of gusset. Press.



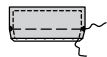
33. Pin pocket to side front and back, over side seam, matching symbols. **EDGESEW** side and lower edges.



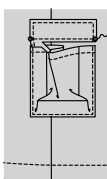
34. Fold LOWER FLAP (12) along foldline, with right sides together. Stitch ends.



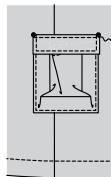
35. Turn flap. Press. Baste raw edges together. **TOPSTITCH** outer edges of flap.



36. Pin flap to front sections, placing seamline along stitching line. Baste. Stitch along seamline between small dots. Trim flap seam allowance to a scant 1/4" (6mm), being careful not to cut garment.

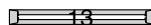


37. Turn flap down. Press. **TOPSTITCH** upper edge of flap, encasing trimmed edge.

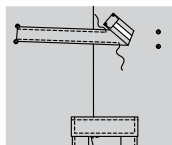


CASING B

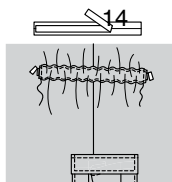
38. Press under 3/8" (1cm) on long edges of CASING (13). Press under 5/8" (1.5cm) ends of casing.



39. On outside, pin casing to side edges of dress, matching small dots, placing lower pressed edge along casing line. Stitch close to long edges of casing, keeping ends open.

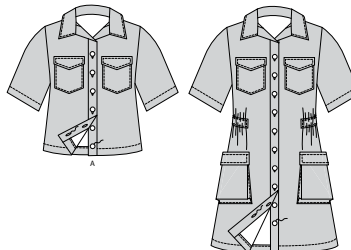


40. Cut a piece of elastic the length of GUIDE FOR ELASTIC (14). Insert elastic through opening in casing, having seam allowance extend beyond pressed edge of casing. **EDGESEW** ends of elastic in place. Trim away ends of elastic.



FINISHING

41. Make buttonhole in right front placket at markings. Lap right front over left front, sew buttons to left placket under buttonholes.

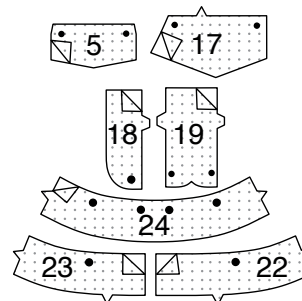


SHORTS C, PANTS D

NOTE: Under each sub-heading, View B will be illustrated unless otherwise indicated.

INTERFACING

1. Fuse **INTERFACING** to wrong side of all matching **FABRIC** pieces, following manufacturer's instructions.



FRONT AND BACK

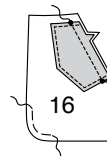
2. With right sides together, pin one flap (17) to one uninterfaced flap section. Stitch, keeping notched and upper edge open. Trim seam.



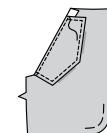
3. Turn flap right side out. Press. Baste raw edges together. **TOPSTITCH** outer edges of flap.



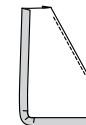
4. On inside, with interfacing side facing down, pin flap to side edge of POCKET (16) matching notches and small dots. Stitch ending at lower small dot. Clip at stitching at lower small dot, being careful not to cut through stitching. **EASESTITCH** lower curved edge of pocket, as shown.



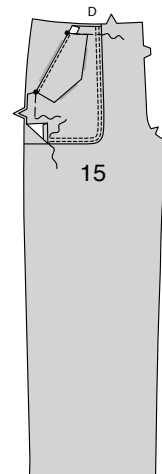
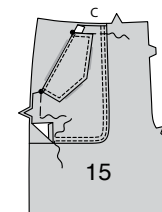
5. Turn flap to outside along seam. Press. Baste upper edges together. **TOPSTITCH** flap close to finished edge.



6. Turn under remaining seam allowance on outer edges of pocket, pulling up ease stitches to fit curve. Press. Trim.



7. On outside, pin pocket to PANTS FRONT (15), matching small dots, placing pressed edge along pocket line. **EDGESEW** and **TOPSTITCH** outer edges of pocket in place.



8. Turn in 1/4" (6mm) on upper edge of each POCKET (4) section. Press.



9. Turn upper edge to outside along foldline. Stitch ends. Trim.



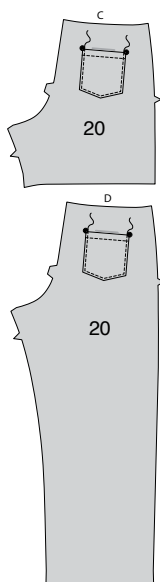
10. Turn upper edge of pocket to inside, turning in remaining seam allowances and diagonally folding corners. Press. Baste close to inner pressed edge.



11. **TOPSTITCH** along basting.



12. Pin pocket to PANTS BACK (20), matching symbols. **EDGE**STITCH side and lower edges, reinforcing upper ends.



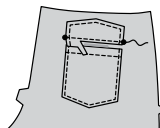
13. For each flap, stitch uninterfaced FLAP (5) to interfaced flap sections, leaving upper edge open. Trim.



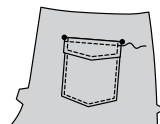
14. Turn right side out. Press. Baste raw edges together. **TOP**STITCH finished edges of flap.



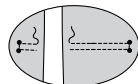
15. Pin flap (interfaced side up) to front sections, placing seamline along stitching line. Baste. Stitch along seamline between small dots. Trim flap seam allowance to a scant 1/4" (6mm), being careful not to cut garment.



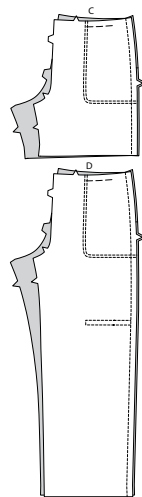
16. Turn flap down. Press. **TOP**STITCH upper edge of flap, encasing trimmed edge.



17. VIEW D- REINFORCE pants side along stitching lines, pivoting at small dots, as shown.



18. VIEWS C, D- With right sides together, stitch front to back at side seams.

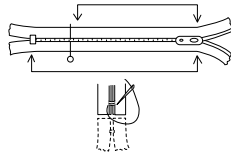


ZIPPER POCKETS D

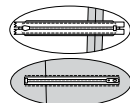
19. Slash along lines between stitching, clipping diagonally to small dots.



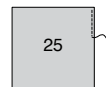
20. NOTE: It is necessary to shorten zipper. Measure the opening between small dots. To make new zipper stop, mark placement of new zipper stop. Whipstitch across teeth at marking. Cut zipper 3/4"(2cm) below the new stop.



21. Press under seam allowances to inside along stitching. On inside, pin closed zipper under opening edges, having top and bottom stop at opening edges. **EDGE**STITCH zipper in place, using an adjustable zipper foot.



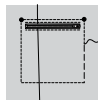
22. FINISH outer edges of LOWER POCKET (25).



23. On inside, pin right side of pocket to wrong side of pants matching large dots. Baste along pocket line.



24. On outside, **TOP**STITCH as basted.



CONTINUE AS FOLLOWS FOR BOTH VIEWS

25. Construct front fly as follows:

A- Stitch front sections together at center front between large dot and notch.

B- Turn in right front opening edge along foldline; press.

C- Place closed zipper (face up) under right front opening edge, having pressed edge close to zipper teeth and zipper stop at small dot. Using a zipper foot, baste close to pressed edge.

D- With right sides together, fold FLY (19) along foldline.

Stitch lower edge. Trim. Turn. Press. Baste raw edges.

E- On inside, pin right fly to right front opening edge (over zipper), matching notches and small dots, having raw edges even. Baste along previous basting for zipper.

F- On outside, using a zipper foot, stitch close to pressed edge of front through all layers.

G- FINISH outer edge of FLY FACING (18). Pin fly facing to left front opening edge, match- ing notches and large dots. Stitch, ending at large dot. Trim. **UNDER**STITCH fly facing. Turn facing to inside.

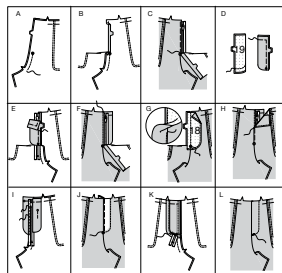
H- Lap left front over right, matching centers. Baste close to edge through all thicknesses.

I- Pin right fly out of the way. Open out fly facing. Pin remaining zipper tape to fly facing, keeping left front free.

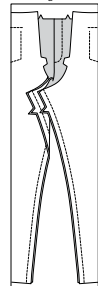
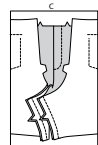
J- Turn facing down. On outside, stitch left front along stitching lines, keeping right fly free.

K- Turn right fly back in place. On inside, hand tack fly and facing together at lower edge, as shown. Trim away excess zipper tape even with lower edge of fly, if needed.

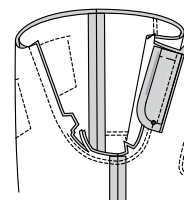
L- If desired, on outside, machine-stitch a bar tack across lower end of fly through all thicknesses.



26. Stitch front and back together at inner leg edges.



27. Stitch remainder of crotch seam to single notch on front. Stitch again 1/4" (1cm) away within seam allowance along curve, as shown. Trim close to second stitching.



WAISTBAND

28. Turn in 1/4"(6mm) on long edges of CARRIERS (21); press. With wrong sides together, fold carriers in half lengthwise, having edges even; press. **EDGE**STITCH, as shown.

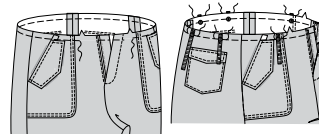


29. Cut carriers into four sections, each 3-1/4"(8.3 cm) long. Cut remaining carriers into two sections, each 4-1/2"(12cm) long for back.

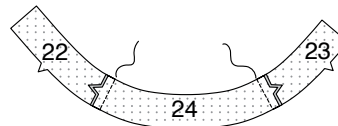


30. EASESTITCH upper edge of pants between notches, as shown.

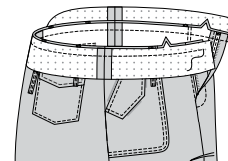
On outside, pin one half of shorter carriers to front and back centering ends at large dots. Pin remaining larger carriers to center back at large dots. Baste.



31. With right sides together, stitch RIGHT FRONT WAISTBAND (22) and LEFT FRONT WAISTBAND (23) to BACK WAISTBAND (24) at sides.



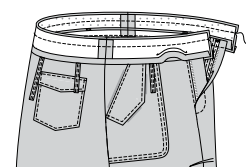
32. With right sides together, pin waistband to upper edge of pants (over carriers), matching notches and centers, and side seams. Adjust ease. Stitch. Press band out pressing seam toward band.



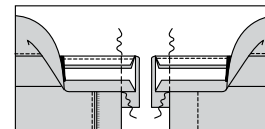
33. With right sides together, stitch front waistband sections to back facing at sides. Press under 1/2"(1.3cm) on lower edge of waistband facing.



34. With right sides together, pin facing to waistband, matching centers back and side seams. Stitch along upper edge.

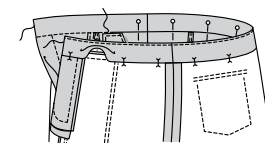


35. UNDERSTITCH facing. Fold ends of facing to outside, over waistband, at front opening edges. Stitch from upper edge to waistband seam as shown.



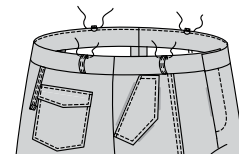
36. Turn on outside.

On outside, **STITCH IN THE DITCH** or groove of waistband seam, catching facing on inside, being careful not to catch carriers. Press. **SLIP**STITCH facing at front opening.

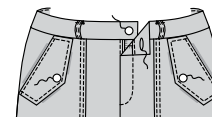


FINISHING

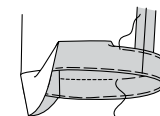
37. Turn under 1/4" (6mm) on remaining end of carriers, then press carriers upward, centering pressed ends over large dots on waistband. Stitch across pressed ends. Backstitch to reinforce. For back, cross carriers forming an "X", as shown. Stitch across pressed ends.



38. Make buttonhole in left band at marking. Sew button to right band at small dot. Sew button to front flaps at markings.



39. Turn up hem on lower edge of garment. Baste close to fold. Turn in 1/4" (6mm) on raw edge, easing in fullness if necessary. Baste hem in place close to upper edge. Press **TOP**STITCH hem along upper basting, as shown.





Congrats!

You've completed your sewing adventure

SHARE YOUR LOOK



Post your pattern and tag us
[@simplicity_creative_group](#) and [#simplicitypatterns](#)
for a chance to be featured on our social media.

Look for more PDF patterns at [simplicity.com](https://www.simplicity.com)

Have a question or need help with your sewing project call us at
1-800-782-0323

McCall's
by **design**_{group}

McCall's ©2024 a division of IG Design Group Americas Inc. • Atlanta, GA 30342 USA www.thedesigngroup.com • All Rights Reserved. www.mccall.com • Made in the U.S.A. Fabriqué aux États-Unis.

To be used for individual private home use only and not for commercial or manufacturing purposes. • A usage privé seulement et non à des fins commerciales ou de production en série. • Para uso privado solamente, no se puede utilizar con propósitos de comercialización o de producción en serie.